

UNITED STATES  
DEPARTMENT OF THE INTERIOR  
BUREAU OF LAND MANAGEMENT

RECEIVED

FORM APPROVED  
OMB No 1004-0137  
Expires July 31, 2010

APPLICATION FOR PERMIT TO DRILL OR REENTER

JUN 02 2011

Farmington Field Office

Bureau of Land Management

1a. Type of work: <input checked="" type="checkbox"/> DRILL <input type="checkbox"/> REENTER		5. Lease Serial No. NMNM-16467	
1b. Type of Well: <input type="checkbox"/> Oil Well <input checked="" type="checkbox"/> Gas Well <input type="checkbox"/> Other <input type="checkbox"/> Single Zone <input checked="" type="checkbox"/> Multiple Zone		6. If Indian, Allottee or Tribe Name NAVAJO NATION (SURFACE)	
2. Name of Operator XTO ENERGY, INC.		7. If Unit or CA Agreement, Name and No.	
3a. Address 382 ROAD 3100 AZTC, NM 87410		8. Lease Name and Well No CANYON 9 F	
3b. Phone No. (include area code) 505 333-3159		9. API Well No. 30-045- 35289	
4. Location of Well (Report location clearly and in accordance with any State requirements.) At surface 1905' FNL & 937' FWL At proposed prod zone SAME		10. Field and Pool, or Exploratory GALLEGOS GALLUP, BASIN DAKOTA	
14. Distance in miles and direction from nearest town or post office* 19 AIR MILES SOUTH OF BLOOMFIELD, NM		12. County or Parish SAN JUAN	13. State NM
15. Distance from proposed* location to nearest property or lease line, ft (Also to nearest drig. unit line, if any) 735'	16. No. of acres in lease 160.39	17. Spacing Unit dedicated to this well Gallup: S2NW4 (80 ac.); Dakota S2 (320.52 ac.)	
18. Distance from proposed location* to nearest well, drilling, completed, applied for, on this lease, ft. 739' (9 E)	19. Proposed Depth 6,400' MD	20. BLM/BIA Bond No. on file BLM NATIONWIDE UTB-000138	
21. Elevations (Show whether DF, KDB, RT, GL, etc.) 6,413' UNGRADED	22. Approximate date work will start* 11/01/2011	23. Estimated duration 4 WEEKS	

This action is subject to technical and procedural review pursuant to 43 CFR 3165.3-4 and appeal pursuant to 43 CFR 3165.4

DRILLING OPERATIONS AUTHORIZED ARE SUBJECT TO COMPLIANCE WITH ATTACHED "GENERAL REQUIREMENTS".

The following, completed in accordance with the requirements of Onshore Oil and Gas Order No.1, must be attached to this form.

- Well plat certified by a registered surveyor.
- A Drilling Plan.
- A Surface Use Plan (if the location is on National Forest System Lands, the SUPO must be filed with the appropriate Forest Service Office).
- Bond to cover the operations unless covered by an existing bond on file (see Item 20 above)
- Operator certification
- Such other site specific information and/or plans as may be required by the BLM

25. Signature <i>Brian Wood</i>	Name (Printed/Typed) BRIAN WOOD (505 466-8120)	Date 05/30/2011
------------------------------------	---	--------------------

Title CONSULTANT	(FAX 505 466-9682)
---------------------	--------------------

Approved by (Signature) <i>[Signature]</i>	Name (Printed/Typed)	Date 5/23/12
---	----------------------	-----------------

Title AFM	Office FFO
--------------	---------------

Application approval does not warrant or certify that the applicant holds legal or equitable title to those rights in the subject lease which would entitle the applicant to conduct operations thereon.  
Conditions of approval, if any, are attached.

Title 18 U.S.C. Section 1001 and Title 43 U.S.C. Section 1212, make it a crime for any person knowingly and willfully to make to any department or agency of the United States any false, fictitious or fraudulent statements or representations as to any matter within its jurisdiction

(Continued on page 2)

Oil Cons. Div  
District III

\*(Instructions on page 2)

SEE ATTACHED FOR

CONDITIONS OF APPROVAL

MAY 30 2012

NMOCD

ca JUN 14 2012

BLM'S APPROVAL OR ACCEPTANCE OF THIS ACTION DOES NOT RELIEVE THE LESSEE AND OPERATOR FROM OBTAINING ANY OTHER AUTHORIZATION REQUIRED FOR OPERATIONS ON FEDERAL AND INDIAN LANDS

NOTIFY AZTEC OCD 24 HRS.  
PRIOR TO CASING & CEMENT

DISTRICT I  
1625 N. Fench Dr., Hobbs, NM 88240

DISTRICT II  
1301 W. Grand Avenue, Artesia, N.M. 88210

DISTRICT III  
1000 Rio Brazos Rd., Aztec, N.M. 87410

DISTRICT IV  
1220 South St. Francis Dr., Santa Fe, NM 87505

State of New Mexico  
Energy, Minerals & Natural Resources Department

RECEIVED

Form C-102

Revised October 12, 2005

Instructions on back

Submit to Appropriate District Office

State Lease - 4 Copies

Fee Lease - 3 Copies

OIL CONSERVATION DIVISION

1220 South St. Francis Dr.  
Santa Fe, NM 87504-2088

Farmington Field Office  
Bureau of Land Management

☐ AMENDED REPORT

WELL LOCATION AND ACREAGE DEDICATION PLAT

<sup>1</sup> API Number 30-045- 35289	<sup>2</sup> Pool Code 71599	<sup>3</sup> Pool Name BASIN DAKOTA
<sup>4</sup> Property Code 358 22069	<sup>5</sup> Property Name CANYON	<sup>6</sup> Well Number 9F
<sup>7</sup> GRID No. 5380	<sup>8</sup> Operator Name XTO ENERGY INC.	<sup>9</sup> Elevation 6413'

<sup>10</sup> Surface Location

UL or lot no.	Section	Township	Range	Lot Idn	Feet from the	North/South line	Feet from the	East/West line	County
E	1	25-N	11-W		1905	NORTH	937	WEST	SAN JUAN

<sup>11</sup> Bottom Hole Location If Different From Surface

UL or lot no.	Section	Township	Range	Lot Idn	Feet from the	North/South line	Feet from the	East/West line	County
<sup>12</sup> Dedicated Acres 320.52		<sup>13</sup> Joint or Infill		<sup>14</sup> Consolidation Code C		<sup>15</sup> Order No.			

NO ALLOWABLE WILL BE ASSIGNED TO THIS COMPLETION UNTIL ALL INTERESTS HAVE BEEN CONSOLIDATED  
OR A NON-STANDARD UNIT HAS BEEN APPROVED BY THE DIVISION

16

FD. 2 1/2" BC. 1930 G.L.O.  LOT 4  S 00°03'43" E 2643.93' (M)  937'	N 89°55'51" E 2638.77' (M)  LOT 3  1905'	FD. 2 1/2" BC. 1930 G.L.O.  LOT 2  SURFACE: LAT: 36.43217° N. (NAD 83) LONG: 107.96147° W. (NAD 83) LAT: 36°25'55.4" N. (NAD 27) LONG: 107°57'38.8" W. (NAD 27)	LOT 1
FD. 2 1/2" BC. 1932 G.L.O.			

17 OPERATOR CERTIFICATION

I hereby certify that the information contained herein is true and complete to the best of my knowledge and belief, and that this organization either owns a working interest or unleased mineral interest in the land including the proposed bottom hole location or has a right to drill this well at this location pursuant to a contract with an owner of such a mineral or working interest, or to a voluntary pooling agreement or a compulsory pooling order heretofore entered by the division.

Signature Brian Wood Date 5-30-11

Printed Name BRIAN WOOD

18 SURVEYOR CERTIFICATION

I hereby certify that the well location shown on this plat was plotted from field notes of actual surveys made by me or under my supervision, and that the same is true and correct to the best of my knowledge and belief.

SEPTEMBER 2, 2009

Date of Survey

Signature and Seal of Professional Surveyor



Certificate Number

DISTRICT I  
1625 N. Fench Dr., Hobbs, N.M. 88240

DISTRICT II  
1301 W. Grand Avenue, Artesia, N.M. 88210

DISTRICT III  
1000 Rio Brazos Rd., Aztec, N.M. 87410

DISTRICT IV  
1220 South St. Francis Dr., Santa Fe, NM 87505

State of New Mexico  
Energy, Minerals & Natural Resources Department

OIL CONSERVATION DIVISION

1220 South St. Francis Dr.  
Santa Fe, NM 87504-2088

Form C-102

Revised October 12, 2005

Instructions on back

Submit to Appropriate District Office

State Lease - 4 Copies

Fee Lease - 3 Copies

☐ AMENDED REPORT

WELL LOCATION AND ACREAGE DEDICATION PLAT

<sup>1</sup> API Number 30-045-35289	<sup>2</sup> Pool Code 26980	<sup>3</sup> Pool Name GALLEGOS GALLUP
<sup>4</sup> Property Code 358 22669	<sup>5</sup> Property Name CANYON	<sup>6</sup> Well Number 9F
<sup>7</sup> GRID No. 5380	<sup>8</sup> Operator Name XTO ENERGY INC.	<sup>9</sup> Elevation 6413'

<sup>10</sup> Surface Location

UL or lot no. E	Section 1	Township 25-N	Range 11-W	Lot Idn	Feet from the 1905	North/South line NORTH	Feet from the 937	East/West line WEST	County SAN JUAN
--------------------	--------------	------------------	---------------	---------	-----------------------	---------------------------	----------------------	------------------------	--------------------

<sup>11</sup> Bottom Hole Location If Different From Surface

UL or lot no.	Section	Township	Range	Lot Idn	Feet from the	North/South line	Feet from the	East/West line	County
<sup>12</sup> Dedicated Acres 80		<sup>13</sup> Joint or Infill		<sup>14</sup> Consolidation Code		<sup>15</sup> Order No			

NO ALLOWABLE WILL BE ASSIGNED TO THIS COMPLETION UNTIL ALL INTERESTS HAVE BEEN CONSOLIDATED  
OR A NON-STANDARD UNIT HAS BEEN APPROVED BY THE DIVISION

16

FD. 2 1/2" BC. 1930 G.L.O. LOT 4 S 00°03'43" E 2643.93' (M) 1905' 585' 937'	N 89°55'51" E 2638.77' (M) LOT 3	FD. 2 1/2" BC. 1930 G.L.O. LOT 2	LOT 1
SURFACE: LAT: 36.43217° N. (NAD 83) LONG: 107.96147° W. (NAD 83) LAT: 36°25'55.4" N. (NAD 27) LONG: 107°57'38.8" W. (NAD 27)			
FD. 2 1/2" BC. 1932 G.L.O.			

17 OPERATOR CERTIFICATION

I hereby certify that the information contained herein is true and complete to the best of my knowledge and belief, and that this organization either owns a working interest or unleased mineral interest in the land including the proposed bottom hole location or has a right to drill this well at this location pursuant to a contract with an owner of such a mineral or working interest, or to a voluntary pooling agreement or a compulsory pooling order heretofore entered by the division

*Brian Wood*  
Signature Date 5-30-11

Printed Name BRIAN WOOD

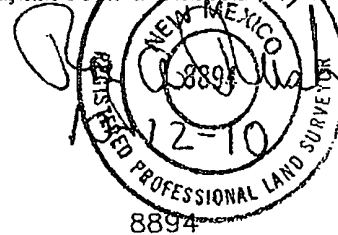
18 SURVEYOR CERTIFICATION

I hereby certify that the well location shown on this plat was plotted from field notes of actual surveys made by me or under my supervision, and that the same is true and correct to the best of my knowledge and belief

SEPTEMBER 2, 2009

Date of Survey

Signature and Seal of Professional Surveyor



Certificate Number 8894

XTO Energy Inc.  
Canyon 9 F  
1905' FNL & 937' FWL  
Sec. 1, T. 25 N., R. 11 W.  
San Juan County, New Mexico

PAGE 1

## Drilling Program

### 1. ESTIMATED FORMATION TOPS

<u>Formation Name</u>	<u>GL Depth</u>	<u>KB Depth</u>	<u>Elevation</u>
Nacimiento	0'	12'	+6,413'
Ojo Alamo	568'	580'	+5,845'
Kirtland	723'	735'	+5,690'
Fruitland	1,303'	1,315'	+5,110'
Pictured Cliffs	1,578'	1,590'	+4,835'
Lewis shale	1,648'	1,660'	+4,765'
Mesa Verde	2,363'	2,375'	+4,060'
Point Lookout	4,073'	4,085'	+2,340'
Mancos Shale	4,448'	4,460'	+1,965'
Gallup	5,073'	5,085'	+1,340'
Sanostee	5,588'	5,600'	+825'
Greenhorn	5,958'	5,970'	+455'
Dakota	6,073'	6,085'	+340'
Total Depth (TD)	6,400'	6,412'	+13'

### 2. NOTABLE ZONES

#### Gas & Oil Zones

Fruitland  
Pictured Cliffs  
Gallup  
Dakota

#### Water Zones

Nacimiento  
Ojo Alamo  
Fruitland

#### Coal Zone

Fruitland

Water zones will be protected with casing, cement, and weighted mud. Fresh water found while drilling will be recorded. Oil or gas shows will be tested for commercial potential based on the geologist's recommendations.

XTO Energy Inc.  
Canyon 9 F  
1905' FNL & 937' FWL  
Sec. 1, T. 25 N., R. 11 W.  
San Juan County, New Mexico

PAGE 2

### 3. PRESSURE CONTROL

The drilling contract has not yet been awarded, thus the exact BOP model to be used is not yet known. (A typical 2,000 psi model is on PAGE 3.) An 8-5/8" x 11" 2,000 pound double ram BOP system with a choke manifold and mud cross will be tested to  $\approx 200$  psi and then to  $\approx 1,000$  psi. Upper and lower Kelly cocks with valve handle and subs to fit all drill string connections which are in use will be available on the rig floor.

Tests will be run when:

- 1) installed
- 2) anytime a pressure seal is broken (test only affected equipment)
- 3) at least every 30 days
- 4) blind & pipe rams will be activated each trip, but no more than daily

BOP systems will be consistent with API RP 53. Blowout preventers will be installed and tested before drilling surface casing plug and will remain in use until the well is completed or abandoned. Preventers will be inspected and operated daily to ensure good mechanical working order and this inspection recorded on the daily drilling report. Preventers and casing will be pressure tested before drilling casing cement plugs. Maximum expected bottom hole pressure will be  $\approx 2,771$  psi. BOP and mud system will control pressure.

### 4. CASING & CEMENT

<u>Hole Size</u>	<u>O. D.</u>	<u>Weight (lb/ft)</u>	<u>Grade</u>	<u>Age</u>	<u>Connections</u>	<u>Setting Depth</u>
12-1/4"	8-5/8"	24	J-55	New	ST & C	360'
7-7/8"	5-1/2"	15.5	J-55	New	ST & C	6,400'

Surface casing will be cemented to the surface with  $\approx 375$  cubic feet ( $\approx 270$  sacks) Type V cement + 1/4 pound per sack cello-flake + 2%  $\text{CaCl}_2$ . Yield = 1.39 cubic feet per sack. Weight = 14.5 pounds per gallon. Excess: >100%.

XTO Energy Inc.  
Canyon 9 F  
1905' FNL & 937' FWL  
Sec. 1, T. 25 N., R. 11 W.  
San Juan County, New Mexico

PAGE 4

Centralizers will be set on the bottom two joints of the surface casing and every fourth joint to the surface.

Production casing will be cemented to the surface with  $\approx 50\%$  excess as follows. DV tool will be set @  $\approx 4,650'$  (at least 200' into Mancos shale).

First stage lead will consist of  $\approx 281$  cubic feet ( $\approx 140$  sacks) of Type III (or its equivalent) + 2%  $\text{CaCl}_2$  + 1/4 pound per sack cello flake + 0.2% dispersant + 0.5% fluid loss control + 2% LCM additives mixed at 12.5 pounds per gallon and 2.01 cubic feet per sack.

First stage tail will consist of  $\approx 207$  cubic feet ( $\approx 140$  sacks) Type III (or its equivalent) + 5% bonding additive + 1/4 pound per sack cello flake + 0.3% dispersant + 0.2% fluid loss control + 2% LCM additives mixed at 14.2 pounds per gallon and 1.48 cubic feet per sack.

Second stage lead will consist of  $\approx 1,079$  cubic feet ( $\approx 415$  sacks) Type III (or its equivalent) + 1/4 pound per sack cello flake + 8% gel + 2% LCM mixed at 11.9 pounds per gallon and 2.6 cubic feet per sack.

Second stage tail will consist of  $\approx 139$  cubic feet ( $\approx 100$  sacks) Type III Neat mixed at 14.5 pounds per gallon and 1.39 cubic feet per sack.

Centralizers will be set on the bottom two joints, every second joint to  $\approx 5,000'$ , and every fourth joint from  $\approx 2,000'$  to the surface.

## 5. MUD PROGRAM

<u>RANGE</u>	<u>MUD TYPE</u>	<u>WEIGHT</u>	<u>VISCOSITY</u>	<u>WATER LOSS</u>	<u>ADDITIVES</u>
0' - 360'	Fresh-Spud	8.6-9.0	28-32	NC	Gel, lime
360' - 2,500'	Fresh-Poly	8.4-8.8	28-32	NC	Gel, lime sweeps
2,500' - TD	Fresh Water	8.6-9.2	45-60	8-10 cc	Gel, soda ash, LCM

XTO Energy Inc.  
Canyon 9 F  
1905' FNL & 937' FWL  
Sec. 1, T. 25 N., R. 11 W.  
San Juan County, New Mexico

PAGE 5

#### 6. CORES, TESTS, & LOGS

No cores or drill stem tests are planned. Mud logger will arrive at  $\approx 3,000'$  and collect samples every  $\approx 10'$  from there to TD. These open hole logs will be run:

Array Induction/SFL/GR/SP from TD to  $\approx 360'$   
Neutron/Lithodensity/Pe/GR/Cal from TD to  $\approx 3,000'$

#### 7. DOWN HOLE CONDITIONS

No abnormal pressures, temperatures, nor hydrogen sulfide are expected. Maximum expected bottom hole pressure will be  $\approx 2,771$  psi.

#### 8. OTHER INFORMATION

The anticipated spud date is upon approval. It is expected it will take about four weeks to drill and complete the well.

XTO will plug and abandon the Canyon 9 E before producing the Canyon 9 F. The Canyon 9 E has a mechanical problem which prevents production.

The April 13, 2011 on site inspection was attended by Bertha Spencer (BIA), Esther Kee (Tribal Project Review), Rita Whitehorse (Tribal EPA), Charles Black (Permits West), and Malia Villers, Charlyne Charlie, Brent Beaty, & Jerry Lacy (all XTO).

XTO Energy Inc.  
Canyon 9 F  
1905' FNL & 937' FWL  
Sec. 1, T. 25 N., R. 11 W.  
San Juan County, New Mexico

PAGE 6

## Surface Use Plan

### 1. DIRECTIONS & EXISTING ROADS (See PAGES 10 - 12)

From Bloomfield ...

Go SE  $\approx$ 14 miles on US 550 to the equivalent of Mile Post 140.7 on US 550 ...

Go SW  $\approx$ 7 miles on paved County Road 7150 to the Carson Trading Post

Then turn left and go SE 3-1/4 miles on dirt County Road 7300

Then turn right and go South  $\approx$ 150 yards to the South corner of the 9 E pad

Then turn right and go Southwest  $\approx$ 413' cross country to the 9 F pad

Roads will be maintained to at least equal their present condition.

### 2. ROAD TO BE BUILT OR UPGRADED (See PAGES 11 & 12)

The final  $\approx$ 413' of road will be built to BLM Gold Book standards. This will consist of crowning and ditching with a  $\approx$ 14' wide running surface. Maximum disturbed width = 20'. Road crown = 0.03' to 0.05' per foot. Topsoil will initially be windrowed beside the road. Borrow ditch inside slope will be  $\approx$ 4:1. Borrow ditch outside slope will be  $\approx$ 2:1. Ditch bottom will be a smooth V with no vertical cut and ditch depth will be  $\approx$ 1 foot. Once the ditch is complete, topsoil will be pulled back onto the cut slopes so there is no berm. One 24" O. D. culvert will be installed. There will be at least 36" of cover over the Beeline BMG pipeline crossing. Maximum cut or fill = 3'. Maximum grade = 9%. No upgrade, vehicle turn out, or cattle guard is needed.

### 3. EXISTING WELLS (See PAGE 11)

There are 10 oil or gas wells and 2 plugged wells within a mile radius. There are no water or injection wells within a mile.



XTO Energy Inc.  
Canyon 9 F  
1905' FNL & 937' FWL  
Sec. 1, T. 25 N., R. 11 W.  
San Juan County, New Mexico

PAGE 7

#### 4. PROPOSED PRODUCTION FACILITIES (See PAGES 11 & 12)

A ≈60 barrel fiberglass open top tank, ≈300 barrel steel closed top tank, meter run, and separator will be installed on the pad. All surface equipment will be painted a flat juniper green color.

Williams Four Corners, LLC will bury a 1,075.8' long steel 4.5" O. D. gas pipeline. Wall thickness = 0.156". Williams will apply for its own 40' wide right-of-way.

#### 5. WATER SUPPLY

Water will be trucked from the Hilltop Store.

#### 6. CONSTRUCTION MATERIALS & METHODS

NM One Call (1-800-321-ALERT) and Beeline (505 634-1144) will be called ≥72 hours before construction starts. Topsoil and brush will be piled south of the pad. Pit subsoil will be piled east of the pit. The southwest corner of the pad will be trimmed to avoid an a drainage. Slopes will be no steeper than 3 to 1. A diversion ditch will be cut on the east and north sides of the pad. A 20 mil liner will be used for the reserve pit. It will be fenced with 36" high hog wire topped with barbed wire.

#### 7. WASTE DISPOSAL

All trash will be placed in a portable trash cage. It will be hauled to the county landfill. There will be no trash burning. Once dry, contents of the reserve pit will be buried in place. Human waste will be disposed of in chemical toilets and hauled to an approved dump station.

XTO Energy Inc.  
Canyon 9 F  
1905' FNL & 937' FWL  
Sec. 1, T. 25 N., R. 11 W.  
San Juan County, New Mexico

PAGE 8

#### 8. ANCILLARY FACILITIES

There will be no air strip or camp. Camper trailers will be on location for the company man, tool pusher, or mud logger.

#### 9. WELL SITE LAYOUT

See Pages 13 and 14 for drawings of the well pad, cross section, cut and fill diagram, reserve pit, trash cage, access onto the location, parking, living facilities, and rig orientation.

#### 10. RECLAMATION

Reclamation starts once the reserve pit is dry, at which point it will be back filled. The pad and filled pit will be contoured to a natural shape and disturbed areas ripped or harrowed. A BLM approved seed mix will be drilled at a depth and time to be determined by BLM. If broadcast, the rate will be increased as determined by BLM. A harrow or cable will be dragged over the area to assure seed cover. If the well is a producer, then the reserve pit and any other areas not needed for work overs or driving will be reclaimed as previously described.

#### 11. SURFACE OWNER

All construction will be on lease (issued September 1, 1972). Surface owner is the Navajo Nation. Their address is P. O. Box 1480, Window Rock, AZ 86515. Their phone number is (928) 871-6447.

XTO Energy Inc.  
Canyon 9 F  
1905' FNL & 937' FWL  
Sec. 1, T. 25 N., R. 11 W.  
San Juan County, New Mexico

PAGE 9

12. OTHER INFORMATION

The nearest hospital is a  $\approx 3/4$  hour drive away in southwest Farmington.

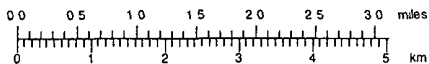
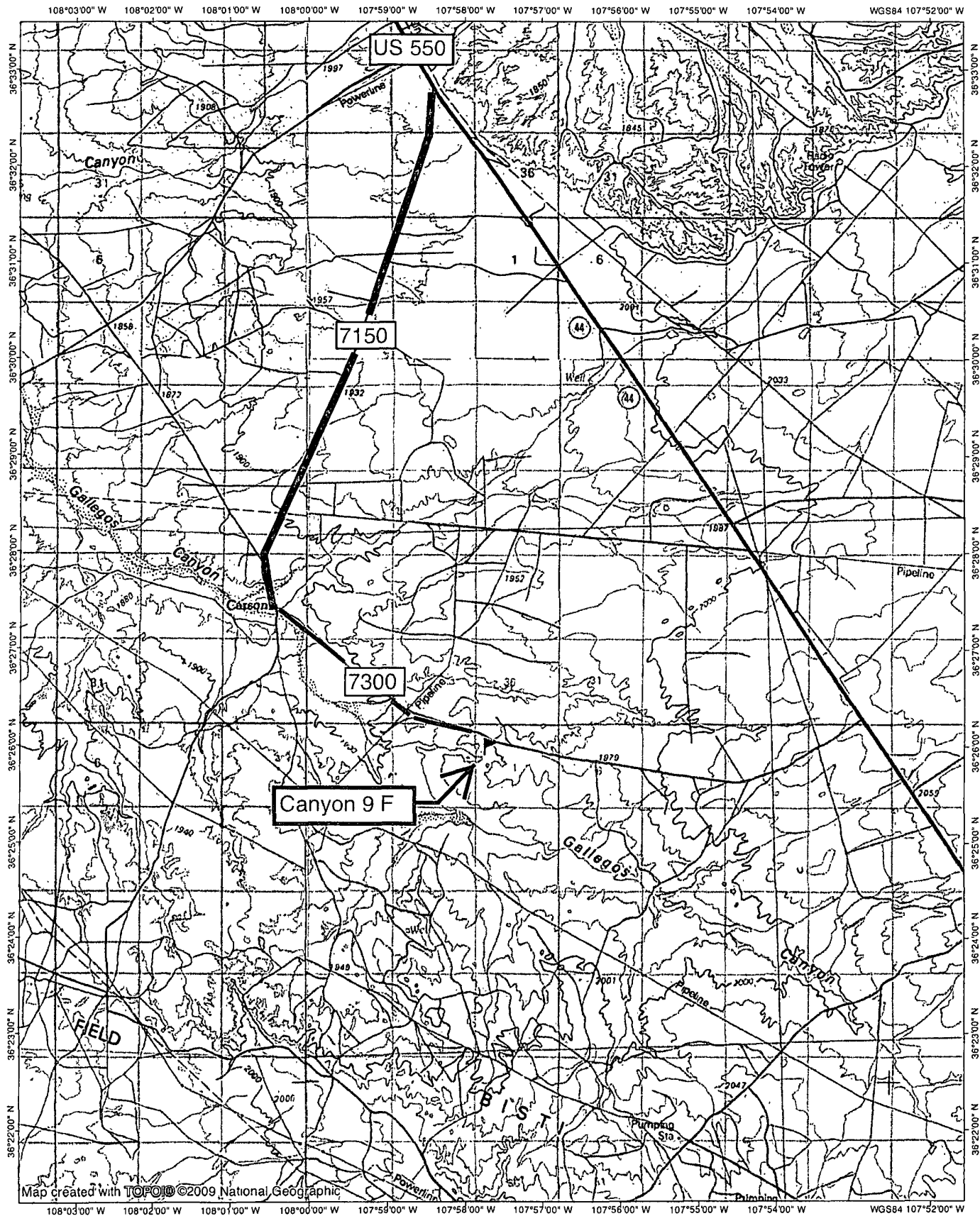
13. REPRESENTATION & CERTIFICATION

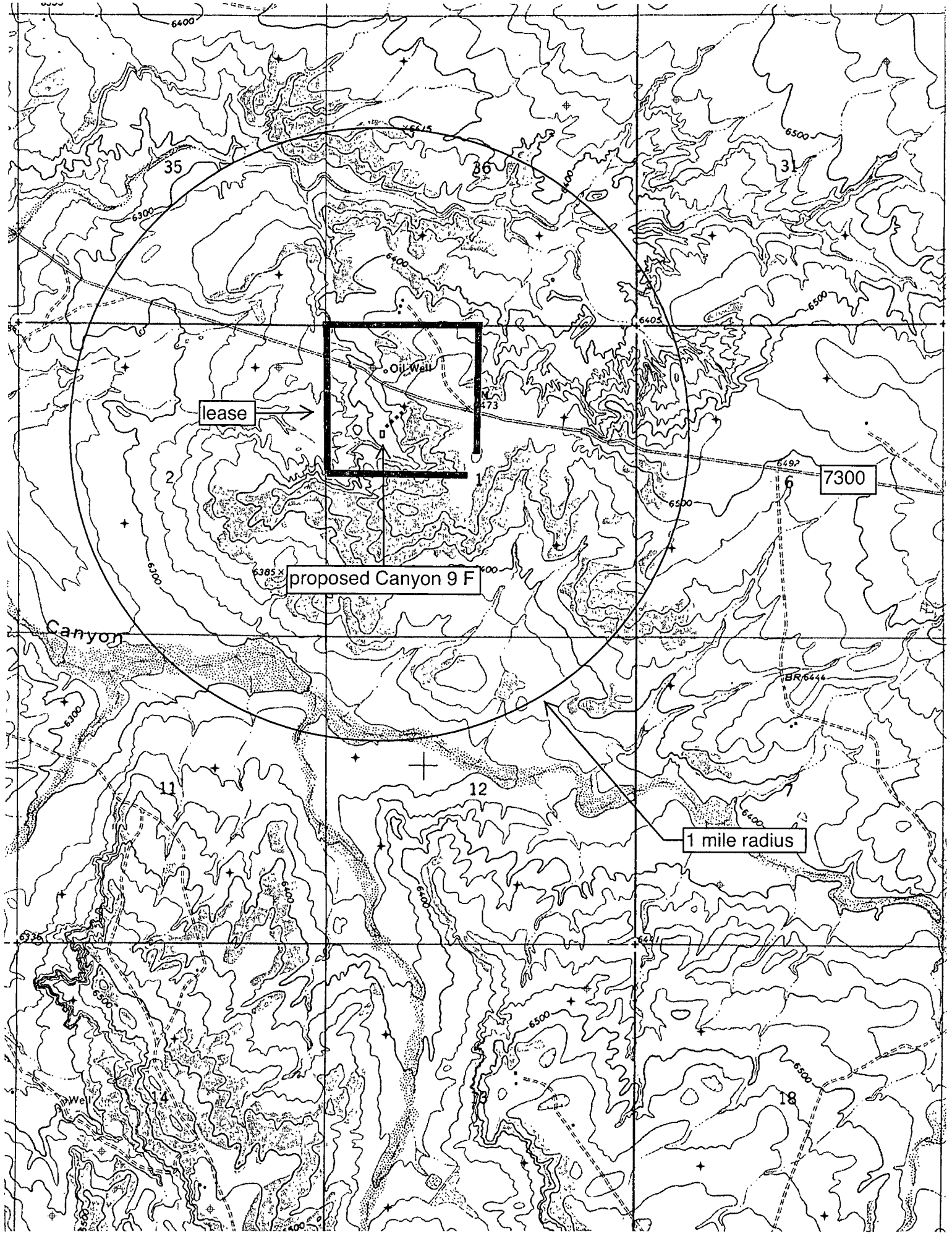
I hereby certify that I, or someone under my direct supervision, have inspected the drill site and access route proposed herein; that I am familiar with the conditions which currently exist; that I have full knowledge of state and Federal laws applicable to this operation; that the statements made in this APD package are, to the best of my knowledge, true and correct; and that the work associated with the operations proposed herein will be performed in conformity with this APD package and the terms and conditions under which it is approved. I also certify that I, or the company I represent, am responsible for the operations conducted under this application. These statements are subject to the provisions of 18 U. S. C. 1001 for the filing of false statements. Executed this 30th day of May, 2011.



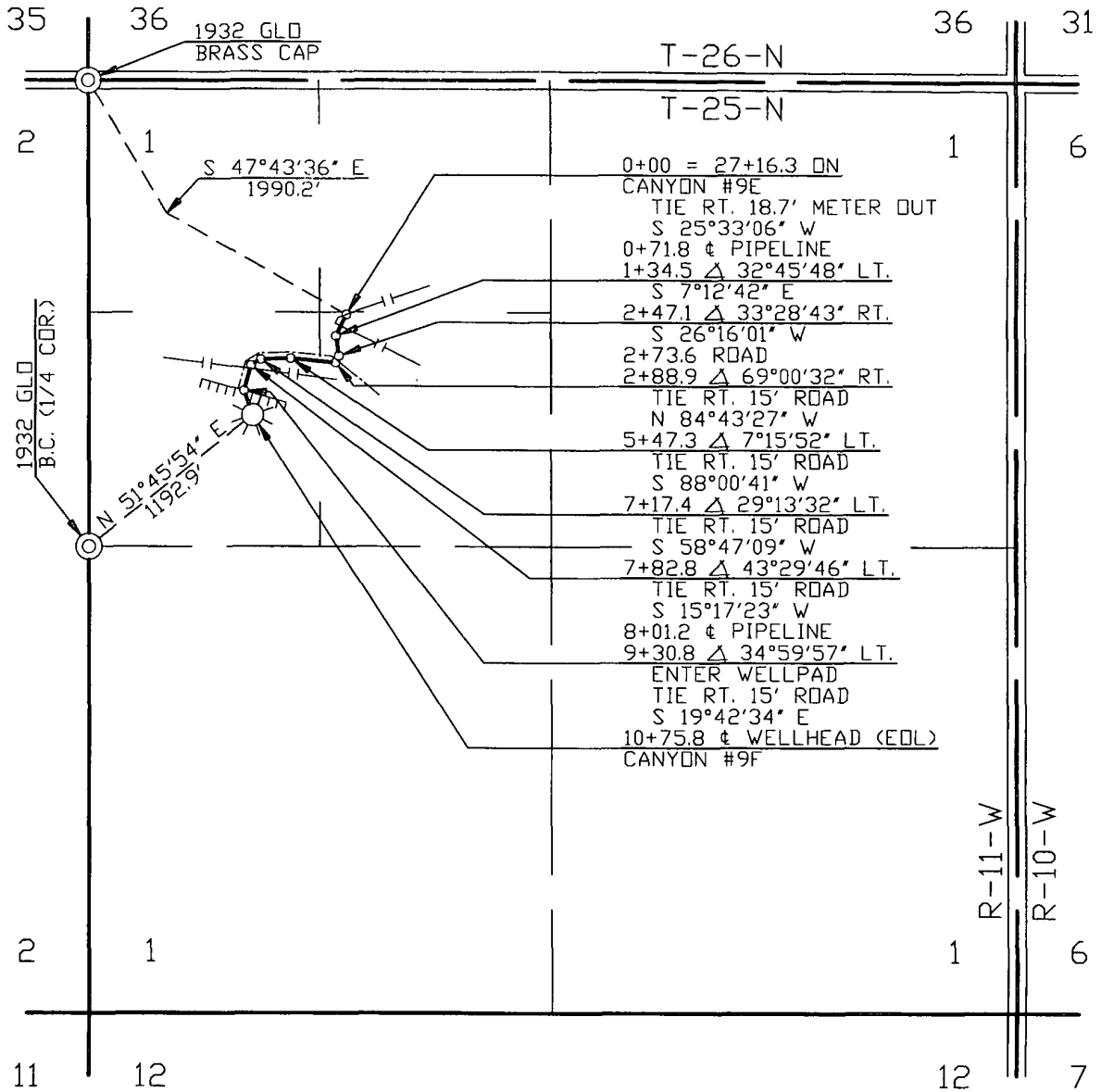
\_\_\_\_\_  
Brian Wood, Consultant  
Permits West, Inc.  
37 Verano Loop, Santa Fe, NM 87508  
(505) 466-8120      FAX: (505) 466-9682      Cellular: (505) 699-2276

The field representative will be:  
Malia Villers  
XTO Energy Inc.  
382 Road 3100, Aztec, NM 87410  
(505) 333-3698





C-102  
FOOTAGES:  
1905' FNL  
937' FWL  
DATE: 09-02-09



PIPE DATA

SUBDIVISION	OWNER	FEET	MILES	ACRES	RODS	R.O.V. WIDTH
0+00 TO 10+75.8	NAVAJO INDIAN RESERVATION	1075.8	0.204	0.988	65.200	40'

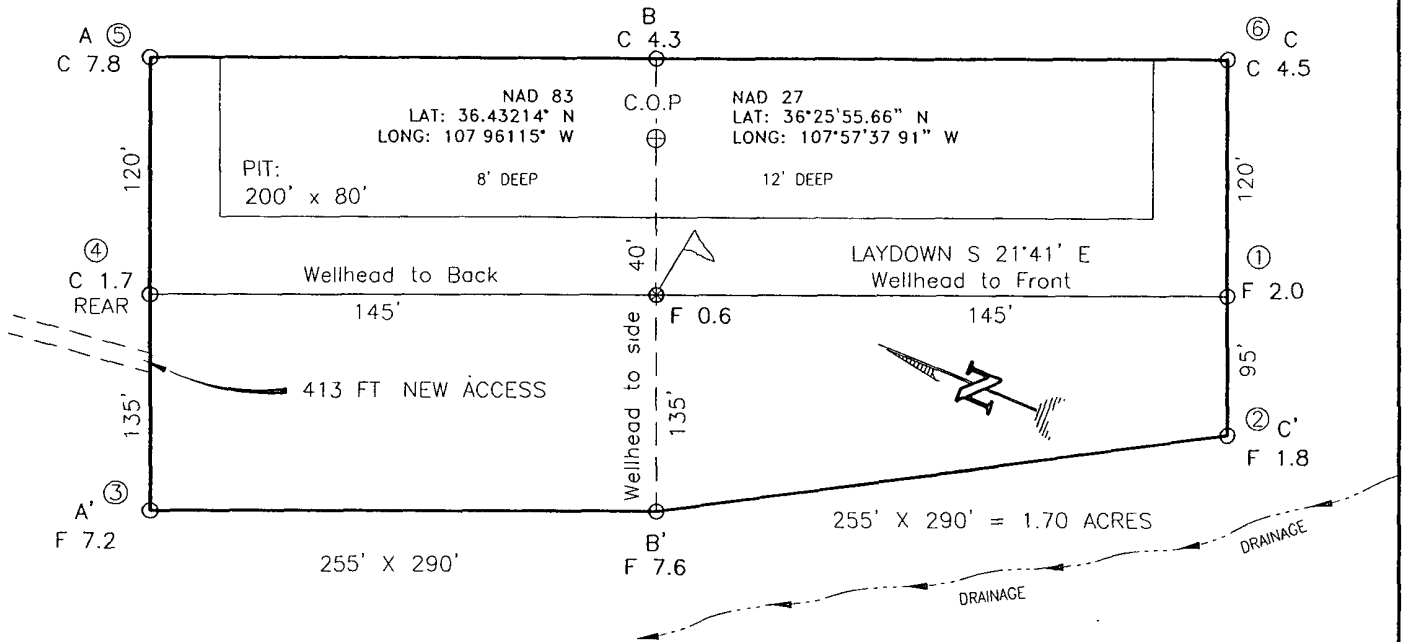
NO.	DATE	BY	DESCRIPTION	W.D.NO.	CHK.	APP.	NO.	DATE	BY	DESCRIPTION	W.D.NO.	CHK.	APP.
1	03/31/11	HG	ISSUED FOR REVIEW	1091541	PB								

INFO	DRAFTING	BY	DATE	STATE: NEW MEXICO	WILLIAMS FOUR CORNERS, LLC
R/W #: 107834	DRAWN BY	HG	03/31/11	COUNTY: SAN JUAN	ONE OF THE WILLIAMS COMPANIES
NWC #: 3593	CHECKED BY	PB	03/31/11		
METER #:	APPROVED BY				
SURVEYED: 03/17/11	ENGINEER	BY	DATE		
	DESIGNED BY			SCALE: 1" = 1000'	
	PROJ. APPROVED			W.D. NO. 1091541	
				DWG NO. P799.0-8-1	
					SHEET 1 OF 1
					REV 1

T-25-N, R-11-W, N 51°45'54" E, 1192.9' TO T-26-N, R-10-W, N 51°45'54" E, 1192.9'

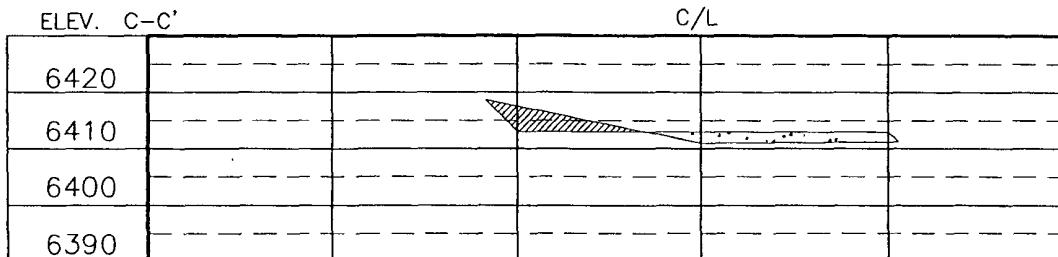
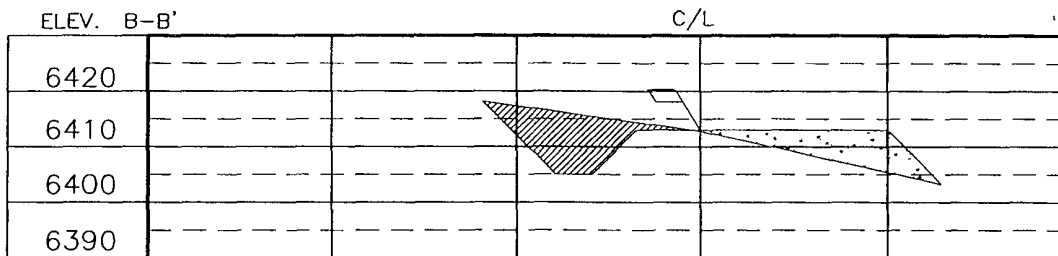
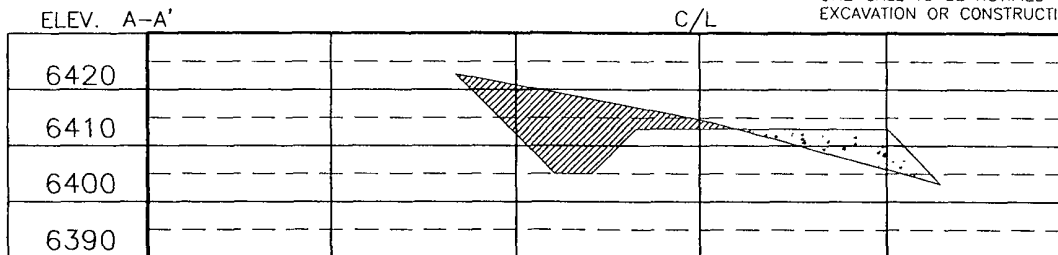
XTO ENERGY INC.  
 CANYON No. 9F, 1905 FNL 937 FWL  
 SECTION 1, T25N, R11W, N.M.P.M., SAN JUAN COUNTY, N.M.  
 GROUND ELEVATION: 6413' DATE: SEPTEMBER 2, 2009

NAD 83  
 LAT. = 36.43217° N  
 LONG. = 107.96147° W  
 NAD 27  
 LAT. = 36°25'55.4" N  
 LONG. = 107°57'38.8" W



RESERVE PIT DIKE: TO BE 8' ABOVE DEEP SIDE (OVERFLOW - 3' WIDE AND 1' ABOVE SHALLOW SIDE)  
 BLOW PIT: OVERFLOW PIPE HALFWAY BETWEEN TOP AND BOTTOM AND TO EXTEND OVER PLASTIC LINER AND INTO BLOW PIT

NOTE: DAGGETT ENTERPRISES, INC IS NOT LIABLE FOR UNDERGROUND UTILITIES OR PIPELINES. NEW MEXICO ONE CALL TO BE NOTIFIED 48 HOURS PRIOR TO EXCAVATION OR CONSTRUCTION



NOTE CONTRACTOR SHOULD CALL ONE-CALL FOR LOCATION OF ANY MARKED OR UNMARKED BURIED PIPELINES OR CABLES ON WELL PAD AND OR ACCESS ROAD AT LEAST TWO (2) WORKING DAYS PRIOR TO CONSTRUCTION.

REVISION	DATE	REVISED BY

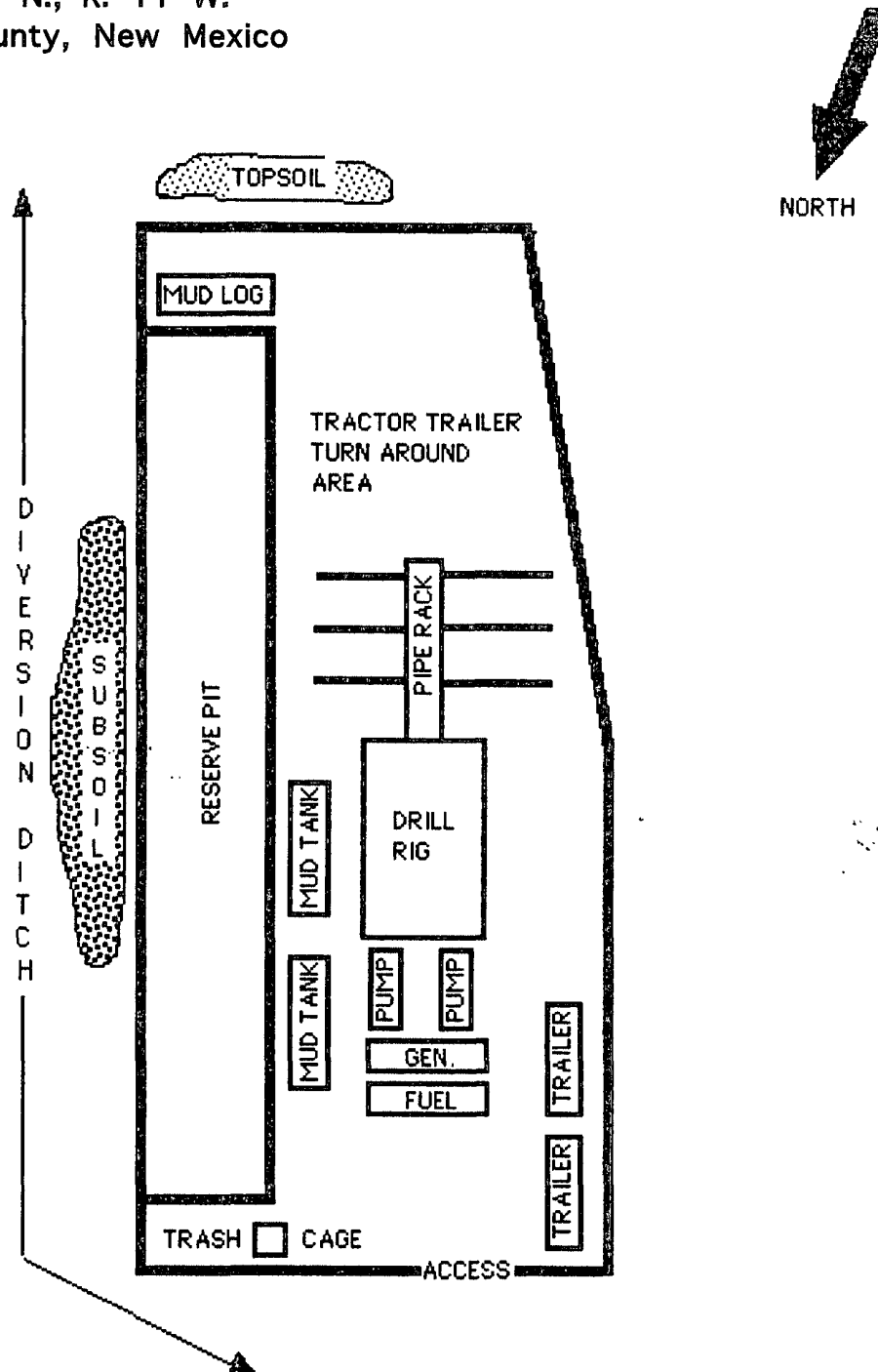
**Daggett Enterprises, Inc.**  
 Surveying and Oil Field Services  
 P. O. Box 510 Farmington, NM 87499  
 Phone (505) 326-1772 • Fax (505) 326-6019  
 NEW MEXICO L.S. No. 8894

**DRAWN BY** G.V.  
**ROW#** CR1121

**DATE** 10/7/10  
**CADFILE** CR1121-CFB

XTO Energy Inc.  
Canyon 9 F  
1905' FNL & 937' FWL  
Sec. 1, T. 25 N., R. 11 W.  
San Juan County, New Mexico

PAGE 14



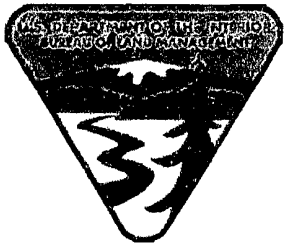


## ***DRILLING CONDITIONS OF APPROVAL***

**Operator:** XTO Energy Inc.  
**Lease No.:** NMNM-16467  
**Well Name:** Canyon #9F  
**Well Location:** Sec.1, T25N, R11W; 1905' FNL & 937' FWL

To meet minimal requirements, XTO is to pressure test the surface casing to 600psi for 30 minutes with a drop of no more than 60psi in that time frame. XTO shall also pressure test the production casing to 1500psi or greater for 30 minutes with a drop of no more than 150psi in that time frame.

**In reference to Onshore Order No.2 III.B.1.h**

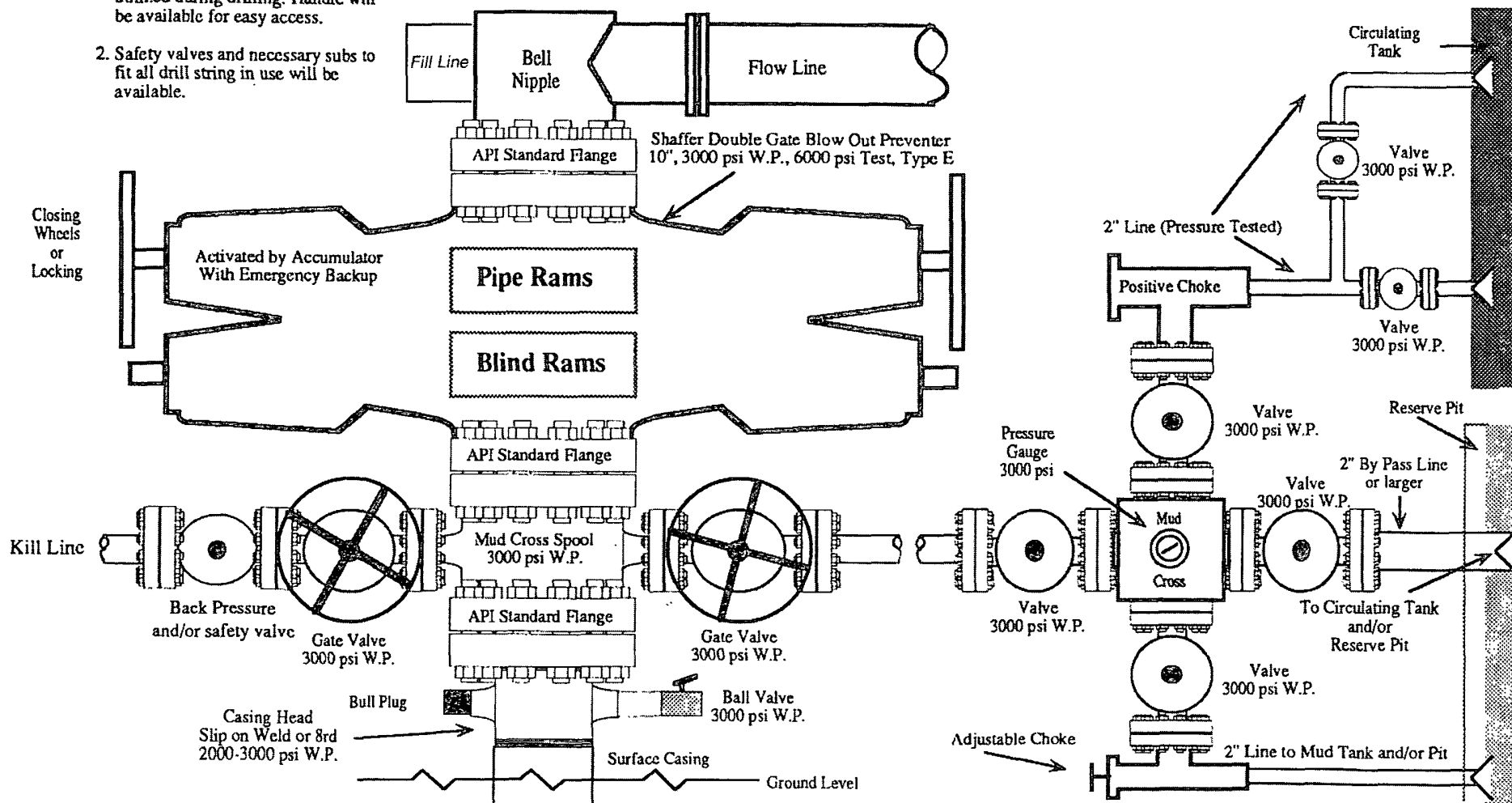


After hour contact: Troy Salyers 505-360-9815

# 2,000 PSI BOP SYSTEM

Note: 1. An upper Kelly cock valve will be utilized during drilling. Handle will be available for easy access.

Note: 2. Safety valves and necessary subs to fit all drill string in use will be available.



Note: This equipment is designed to meet requirements for a 2-M rating standard per 43 CFR part 3160 (amended). Proper operation and testing of equipment will be carried out per standard. 2,000 psi equipment can be substituted in the drawing to meet minimum requirements per standard.

**PERMITS WEST, INC.**

PROVIDING PERMITS for LAND USERS

37Verano Loop, Santa Fe, New Mexico 87308

(505) 466-8120