

UNITED STATES  
DEPARTMENT OF THE INTERIOR  
BUREAU OF LAND MANAGEMENT

RECEIVED

MAY 31 2012

FORM APPROVED  
OMB No. 1004-0137  
Expires: July 31, 2010

**SUNDRY NOTICES AND REPORTS ON WELLS**  
**Do not use this form for proposals to drill or to re-enter an**  
**abandoned well. Use Form 3160-3 (APD) for such proposals.**

Farmington Field Office

Bureau of Land Management

5. Lease Serial No

Jicarilla Apache #41

6. If Indian, Allottee or Tribe Name

Jicarilla Apache

SUBMIT IN TRIPLICATE - Other instructions on page 2.

1 Type of Well

☐ Oil Well

☒ Gas Well

☐ Other

7. If Unit of CA/Agreement, Name and/or No

8. Well Name and No.

Jicarilla 30 12

2 Name of Operator

ConocoPhillips Company

9. API Well No

30-039-21796

3a Address

PO Box 4289, Farmington, NM 87499

3b Phone No. (include area code)

(505) 326-9700

10. Field and Pool or Exploratory Area

Otero Chacra/Lindrith Gallup-DK West

4. Location of Well (Footage, Sec., T., R., M., or Survey Description)

Surface Unit H (SENE), 2210' FNL & 990' FEL, Sec.30, T25N, R4W

11 Country or Parish, State

Rio Arriba, New Mexico

12. CHECK THE APPROPRIATE BOX(ES) TO INDICATE NATURE OF NOTICE, REPORT OR OTHER DATA

TYPE OF SUBMISSION

TYPE OF ACTION

☒ Notice of Intent

☐ Subsequent Report

☐ Final Abandonment Notice

☐ Acidize

☐ Alter Casing

☐ Casing Repair

☐ Change Plans

☐ Convert to Injection

☐ Deepen

☐ Fracture Treat

☐ New Construction

☒ Plug and Abandon

☐ Plug Back

☐ Production (Start/Resume)

☐ Reclamation

☐ Recomplete

☐ Temporarily Abandon

☐ Water Disposal

☐ Water Shut-Off

☐ Well Integrity

☐ Other

13. Describe Proposed or Completed Operation. Clearly state all pertinent details, including estimated starting date of any proposed work and approximate duration thereof.

If the proposal is to deepen directionally or recompleat horizontally, give subsurface locations and measured and true vertical depths of all pertinent markers and zones. Attach the bond under which the work will be performed or provide the Bond No on file with BLM/BIA. Required subsequent reports must be filed within 30 days following completion of the involved operations. If the operation results in a multiple completion or recompleat in a new interval, a Form 3160-4 must be filed once Testing has been completed. Final Abandonment Notices must be filed only after all requirements, including reclamation, have been completed and the operator has determined that the site is ready for final inspection.)

ConocoPhillips requests permission to P&A the subject well per the attached procedure, current and proposed wellbore schematics.

# add a plug to the top of the Dakota formation  
perfs 7380' - 7280'

RCVD JUN 6 '12  
OIL CONS. DIV.

DIST. 3

Notify NMOCD 24 hrs  
prior to beginning  
operations

14 I hereby certify that the foregoing is true and correct Name (Printed/Typed)

Dollie L. Busse

Title Staff Regulatory Technician

Signature

Date

5/30/12

THIS SPACE FOR FEDERAL OR STATE OFFICE USE

Approved by

Original Signed: Stephen Mason

Title

Date

JUN 04 2012

Conditions of approval, if any, are attached. Approval of this notice does not warrant or certify that the applicant holds legal or equitable title to those rights in the subject lease which would entitle the applicant to conduct operations thereon.

Office

Title 18 U.S.C. Section 1001 and Title 43 U.S.C. Section 1212, make it a crime for any person knowingly and willfully to make to any department or agency of the United States any false, fictitious or fraudulent statements or representations as to any matter within its jurisdiction.

(Instruction on page 2)

NMOCD

**ConocoPhillips**  
**JICARILLA 30 12**  
**Expense - P&A**

Lat 36° 22' 19.232" N

Long 107° 17' 14.244" W

**PROCEDURE**

**NOTE: There is a plunger in this well. BE SURE TO SET A THREE SLIP STOP.**

This project requires a NMOCD C-144 CLEZ Closed-Loop System Permit for the use of an A-Plus steel tank to handle waste fluids circulated from the well and cement wash up. All cement volumes use 100% excess outside pipe and 50' excess inside pipe. The stabilizing wellbore fluid will be 8.3 ppg, sufficient to balance all exposed formation pressures. All cement will be ASTM Type II mixed at 15.6 ppg with a 1.18 cf/sk yield. **Plug depths may change per CBL.**

1. Hold pre-job safety meeting. Comply with all NMOCD, BLM, and COPC safety and environmental regulations. Test rig anchors prior to moving in rig.
2. MIRU work over rig. Check casing, tubing, and bradenhead pressures and record them in Wellview.
3. When an existing primary valve (i.e. casing valve) is to be used, the existing piping should be removed and replaced with the appropriate piping for the intended operation.
4. RU blow lines from casing valves and begin blowing down casing pressure. Kill well with water, as necessary, and at least pump tubing capacity of water down tubing.
5. ND wellhead and NU BOPE. Function test and pressure test BOP. PU and remove tubing hanger.
6. TOOH with tubing/rods (per pertinent data sheet).

|                |       |              |        |                   |       |
|----------------|-------|--------------|--------|-------------------|-------|
| <b>Packer:</b> | No    | <b>Size:</b> | N/A    | <b>Set Depth:</b> | N/A   |
| <b>Rods:</b>   | No    | <b>Size:</b> | N/A    | <b>Set Depth:</b> | N/A   |
| <b>Tubing:</b> | Yes   | <b>Size:</b> | 2-3/8" | <b>Set Depth:</b> | 7570' |
| <b>PBTD:</b>   | 7750' | <b>Fill:</b> | 7715'  |                   |       |

7. Run casing scraper from top of perforations to surface (top perf @ 6,597').

8. RIH and set a cement retainer for 5-1/2" 17# casing at 6,547'. Pressure test tubing to 1000 psi. Load casing with water and attempt to establish circulation. Run CBL and adjust plugs accordingly. Pressure test casing to 560 psi. If casing does not test, then spot and tag subsequent plugs as necessary.

*C 160*

**9. Plug 1 (Gallup-Dakota, 6,408 - 6,547', 21 Sacks Class B Cement)**

Mix 21 sx Class B cement and spot inside the casing above CR to isolate the Gallup-Dakota perforations and formation top. Circulate well clean with water. PUH.

**10. Plug 2 (Mancos, 5,710 - 5,810', 17 Sacks Class B Cement)**

Mix 17 sx Class B cement and spot a balanced cement plug inside casing to isolate the Mancos formation top. PUH.

**11. Plug 3 (Mesaverde, 4,796 - 4,896', 17 Sacks Class B Cement)**

Mix 17 sx Class B cement and spot a balanced cement plug inside casing to isolate the Mesaverde formation top. PUH.

*Chaco plug 444' - 4014'*

*36*

**12. Plug 4 (Pictured Cliffs, Fruitland, Kirtland, and Ojo Alamo, 2,650 - 3,270', 76 Sacks Class B Cement)**

Mix 76 sx Class B cement and spot a balanced cement plug inside casing to isolate the Pictured Cliffs, Fruitland, Kirtland, and Ojo Alamo formation tops. POOH.

*1389 / 1282*

**13. Plug 5 (Nacimiento, 1,310 - 1,410', 47 Sacks Class B Cement)**

Perforate 3 HSC holes at 1,410'. Set a cement retainer for 5-1/2" 17# casing at 1,360'. Establish injection rate into squeeze holes. Mix 47 sx Class B cement. Sqz 30 sx Class B cement into HSC holes and leave 17 sx cement inside casing to isolate the Nacimiento formation top. POOH.

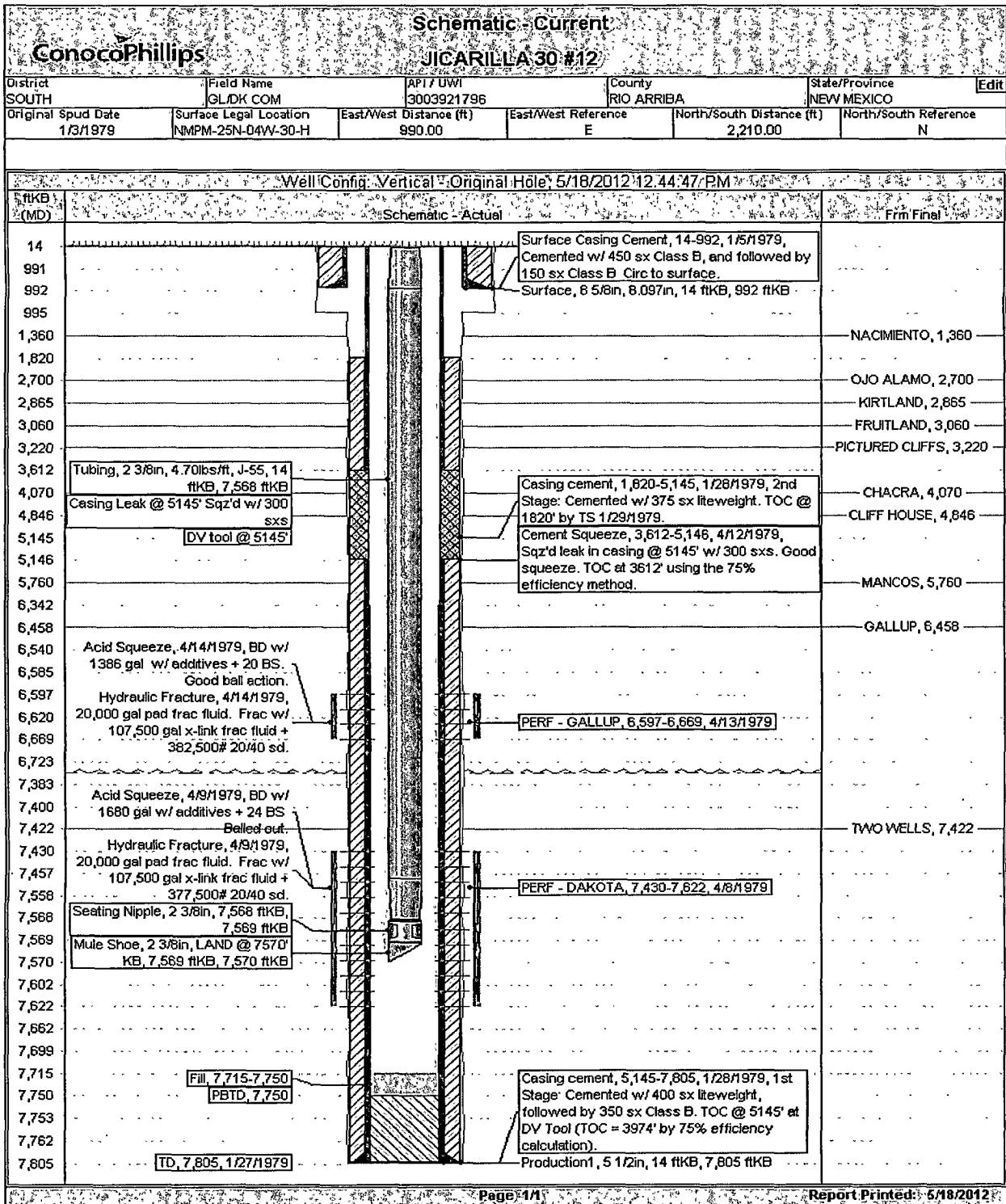
**14. Plug 6 (Surface Casing Shoe, 942 - 1,042', 49 Sacks Class B Cement)**

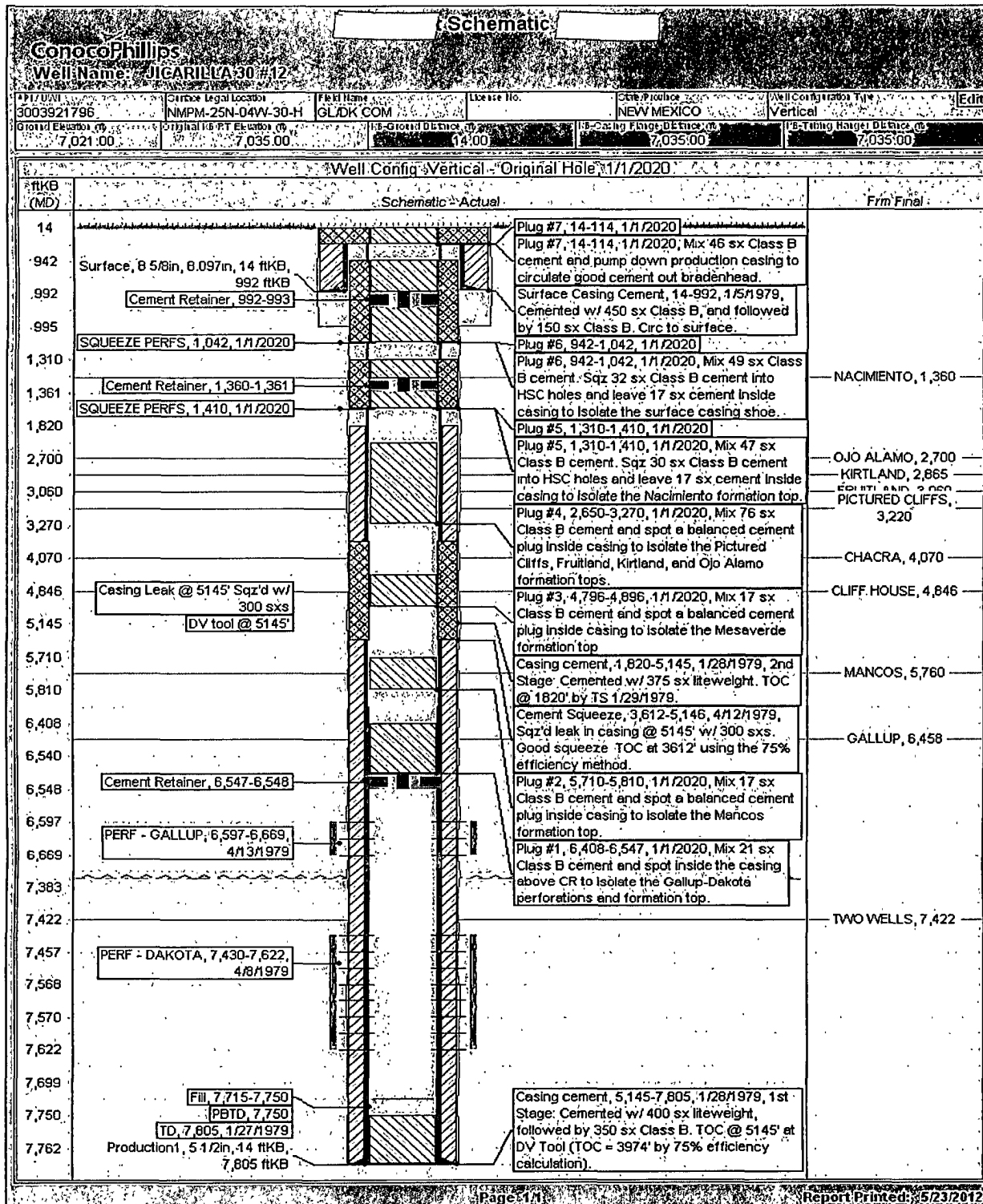
Perforate 3 HSC holes at 1,042'. Set a cement retainer for 5-1/2" 17# casing at 992'. Establish injection rate into squeeze holes. Mix 49 sx Class B cement. Sqz 32 sx Class B cement into HSC holes and leave 17 sx cement inside casing to isolate the surface casing shoe. TOH and LD tubing.

**15. Plug 7 (Surface Plug, Surface - 114', 46 Sacks Class B Cement)**

Perforate 3 HSC holes at 114'. Establish circulation out bradenhead with water and circulate BH annulus clean. Mix 46 sx Class B cement and pump down production casing to circulate good cement out bradenhead. Shut in well and WOC.

16. Nipple down BOP and cut off casing below the casing flange. Install P&A marker with cement to comply with regulations. Rig down, move off location, cut off anchors, and restore location.





**UNITED STATES DEPARTMENT OF THE INTERIOR  
BUREAU OF LAND MANAGEMENT  
FARMINGTON DISTRICT OFFICE  
6251 COLLEGE BLVD.  
FARMINGTON, NEW MEXICO 87402**

Attachment to notice of  
Intention to Abandon:

Re: Permanent Abandonment  
Well: 12 Jicarilla 30

**CONDITIONS OF APPROVAL**

1. Plugging operations authorized are subject to the attached "General Requirements for Permanent Abandonment of Wells on Federal and Indian Lease."
2. Farmington Office is to be notified at least 24 hours before the plugging operations commence (505) 564-7750.
3. The following modifications to your plugging program are to be made:
  - a) Bring the top of the Dakota/Gallup plug to 6160'.
  - b) Place the Chacra plug from 4114' – 4014'.
  - c) Bring the top of the Pictured Cliffs/Fruitland/Kirtland/Ojo Alamo plug from 2636'.
  - d) Place the Nacimiento plug from 1389' – 1289' inside and outside the 5 ½" casing.

You are also required to place cement excesses per 4.2 and 4.4 of the attached General Requirements.

Office Hours: 7:45 a.m. to 4:30 p.m.