

UNITED STATES  
DEPARTMENT OF THE INTERIOR  
BUREAU OF LAND MANAGEMENT

RECEIVED

FORM APPROVED  
OMB No 1004-0135  
Expires July 31, 1996

SUNDRY NOTICES AND REPORTS ON WELLS

Do not use this form for proposals to drill or reenter an abandoned well. Use Form 3160-3 (APD) for such proposals.

JUN 12 2012

Lease Serial No

NMNM-76857

If Indian, Allottee or Tribe Name

Unit or CA/Agreement, Name and/or No

SUBMIT IN TRIPLICATE - Other instructions on reverse side

1. ☒ Oil Well ☐ Gas Well ☐ Other

2 Name of Operator

Elm Ridge Exploration Company, LLC

3a Address

PO Box 156, Bloomfield, NM 87413

3b Phone No (include area code)

505-632-3476 x201

4 Location of Well (Footage, Sec, T, R, M, or Survey Description)

1650' FSL X 330' FEL

I - Sec. 31-T25N-R11W

8 Well Name and No

Ginny Corbett #2

9 API Well No

30-045-27101

10 Field and Pool, or Exploratory Area

Bisti Lower Gallup

11 County or Parish, State

San Juan County, NM

12 CHECK APPROPRIATE BOX(ES) TO INDICATE NATURE OF NOTICE, REPORT, OR OTHER DATA

TYPE OF SUBMISSION	TYPE OF ACTION
<input checked="" type="checkbox"/> Notice of Intent	<input type="checkbox"/> Acidize <input type="checkbox"/> Deepen <input type="checkbox"/> Production (Start/Resume) <input type="checkbox"/> Water Shut-Off
<input type="checkbox"/> Subsequent Report	<input type="checkbox"/> Alter Casing <input type="checkbox"/> Fracture Treat <input type="checkbox"/> Reclamation <input type="checkbox"/> Well Integrity
<input type="checkbox"/> Final Abandonment Notice	<input type="checkbox"/> Casing Repair <input type="checkbox"/> New Construction <input type="checkbox"/> Recomplete <input checked="" type="checkbox"/> Other Test new pay and plug if non-productive
	<input type="checkbox"/> Change Plans <input checked="" type="checkbox"/> Plug and Abandon <input type="checkbox"/> Temporarily Abandon
	<input type="checkbox"/> Convert to Injection <input type="checkbox"/> Plug Back <input type="checkbox"/> Water Disposal

13 Describe Proposed or Completed Operations (clearly state all pertinent details, including estimated starting date of any proposed work and approximate duration thereof. If the proposal is to deepen directionally or recompleat horizontally, give subsurface locations and measured and true vertical depths of all pertinent markers and zones. Attach the Bond under which the work will be performed or provide the Bond No on file with BLM/BIA. Required subsequent reports shall be filed within 30 days following completion of the involved operations. If the operation results in a multiple completion or recompleat in a new interval, a Form 3160-4 shall be filed once Testing has been completed. Final Abandonment Notices shall be filed only after all requirements, including reclamation, have been completed, and the operator has determined that the site is ready for final inspection.)

It was originally intended to plug and abandon this well. After reviewing the openhole logs, it appears that only 10' of pay was perforated during the original completion. Elm Ridge Exploration Co., LLC requests permission to squeeze off the existing perforations from 4746' to 4756', and test the Lower Gallup from 4775' to 4842' (+/-) by selectively re-perforating and acidizing. The well will then be swab tested to determine if hydraulic fracturing of the new perforations is warranted. The attached procedure includes our plugging and abandonment plans, should the Lower Gallup test be unsuccessful. We request until 8/1/2012 to complete this work.

#add Mancos plug from 3650'- 3750'

Notify NMOCD 24 hrs  
prior to beginning  
operations

RCVD JUN 20 '12  
OIL CONS. DIV.

DIST. 3

File C-1044 comp. report before producing if successful

14 I hereby certify that the foregoing is true and correct

Name (Printed/Typed)

Amy Mackey

Title

Administrative Manager

Signature

Date

June 11, 2012

THIS SPACE FOR FEDERAL OR STATE USE

Approved by

Original Signed: Stephen Mason

Title

Date

JUN 15 2012

Conditions of approval, if any, are attached. Approval of this notice does not warrant or certify that the applicant holds legal or equitable title to those rights in the subject lease which would entitle the applicant to conduct operations thereon.

Office

Title 18 U S C Section 1001, makes it a crime for any person knowingly and willfully to make to any department or agency of the United States any false, fictitious or fraudulent statements or representations as to any matter within its jurisdiction

(Instructions on reverse)

NMOCD

## Workover/Plugging Program for Ginny Corbett #2:

TOOH with rods and tubing. PU and TIH with 5-1/2" casing scraper on 2-3/8" tubing to 4740'. TOOH.

PU and TIH with 5-1/2" cement retainer. Set retainer at 4730'. Squeeze existing perforations with 50 sx. PU and reverse circulate with 2 tubing volumes of water. TOOH. WOC 24 hours.

PU and TIH with 4-3/4" bit on 2-3/8" tubing. Drill out retainer and CO to PBTD (4904'). TOOH. PU and TIH with 5-1/2" casing scraper to 4860'. TOOH.

Rig up wireline. RIH and perforate 4830'-40', 4816-26', 4808-12', 4792-4802', and 4775-88'. POOH with wireline.

Break down perforations with 5000 gals. 7-1/2" HCl and additives at 45 BPM. Swab back acid and evaluate. If new perforations appear to be productive, a frac procedure will be provided. If new perforations appear uneconomic, plug and abandon the well as follows:

Plug 1: With end of tubing at 4890' spot <sup>45 36"</sup> 42 sack balanced plug from 4890-4574' to cover perforations and top of Gallup. Pull up and reverse circulate with 2 tubing volumes of water.

Plug 2: With end of tubing at 1967', spot 17 sack balanced plug from 1967-1867', to cover 100' across top of Cliff House. Pull up and reverse circulate with 2 tubing volumes of water.

Plug 3: With end of tubing at 1524', spot 17 sack balanced plug from 1524-1424' to cover 100' across top of Chacra (per NMOCD). Pull up and reverse circulate with 2 tubing volumes of water.

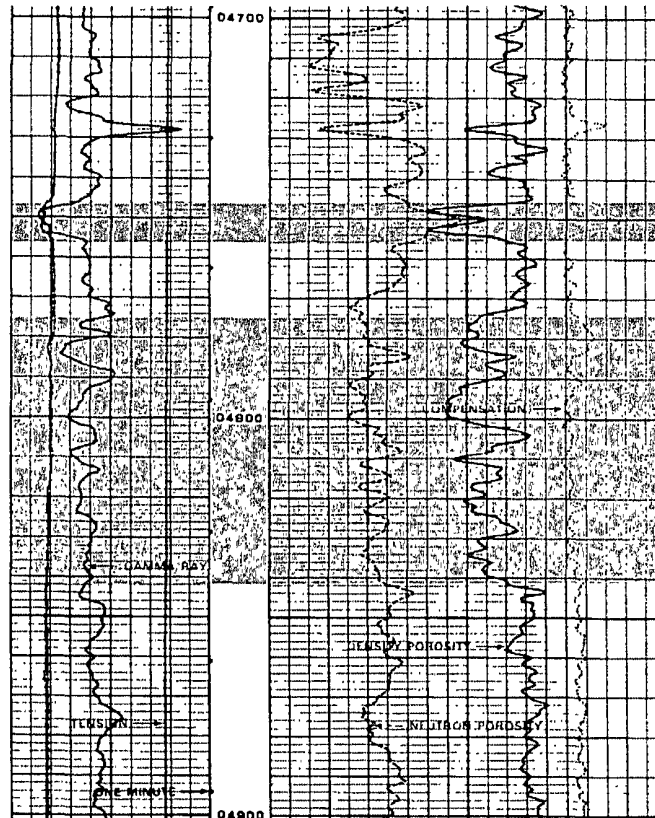
Plug 4: With end of tubing at <sup>6</sup> 1130', spot <sup>6 726</sup> 18 sack balanced plug from <sup>6</sup> 1130'-<sup>726</sup> 1031' to cover across Pictured Cliffs and Fruitland tops. Pull up and reverse circulate with 2 tubing volumes of water.

Plug 5: With end of tubing at 368', spot 42 sack balanced plug from 368' to surface to cover across surface casing shoe and Ojo Alamo inside 5-1/2" casing. Pull up and reverse circulate with 2 tubing volumes of water.

Remediate location per BLM Conditions of Approval.

NOTE: All cement volumes include excess.

Ginny Corbett #2  
SE/4, Sec 31, T25N-R11W  
San Juan County, NM  
API: 30-045-27101  
Bisti Lower Gallup



Existing Perforations  
4746' to 4756'

New Perforations  
4775' to 4842' (+/-)

# Elm Ridge Resources

## Pertinent Data Sheet

**Well Name:** Ginny Corbett #2

**Footage:** 1650' FSL and 330' FEL

**Location:** Section 31, T25N, R11W

**County:** San Juan County, NM

**API#:** 30-045-27101

**Field:** Bisti Lower Gallup

**Elevation:** 6420' GR

**TD:** 4950' KB

**PBTD:** 4904' KB

**Completed:** 12/21/88

### **Casing Record:**

Hole Size	Casing Size	Wt.	Grade	Depth Set	Cement
12-1/4"	8-5/8"	24#	J-55	318'	236 ft <sup>3</sup> (Circ. cement to surface)
7-7/8"	5-1/2"	15.5#	K-55	4952'	1733 ft <sup>3</sup> (Circ. cement to surface)

**Tubing Record:** 1 jt 2-3/8" tbg, 4' sub, SN, 7 jts 2-3/8" tbg, tbg anchor, 140 jts. 2-3/8" tbg.  
EOT at 4822'. SN at 4784'.

**Rod Record:** 2"x1-1/2"x16' RWAC pump, 9x3/4" rods with molded guides, 180x3/4" rods, 1x8'x3/4" sub, 1x6'x3/4" sub, 22'x1-1/4" polished rod.

### **Formation Tops:**

Nacimiento	Surface
Ojo Alamo	Not logged
Fruitland	1081'
Pictured Cliffs	1089'
Lewis	1286'
Chacra	1474'
Cliff House	1917'
Menefee	2546'
Pt Lookout	3585'
Mancos	3775'
Gallup	4624'

**Perforation Record:** 4746-4756'

## Wellbore Diagram

Ginny Corbett #2  
SE/4 Sec. 31, T25N, R11W  
San Juan County, NM  
API #30-045-27101

### Before

Nacimiento- Surface  
Ojo Alamo-Not Logged

8-5/8" 24# J-55 set @ 318'. Circ cmt to surface.

Fruitland 1081'  
Pictured Cliffs 1089'

Lewis 1286'

Chacra 1474'

Cliff House 1917'

Menefee 2546'

Point Lookout 3585'

Mancos 3775'

Gallup 4624'

Perfs: 4746-4756'  
2-3/8" tba set @ 4822'  
5-1/2" 15.5# K-55 set @ 4952'  
Circ. cement to surface

Ginny Corbett 2 WBD (5.5 in LS)  
6/11/2012

## Wellbore Diagram

Ginny Corbett #2  
SE/4 Sec. 31, T25N, R11W  
San Juan County, NM  
API #30-045-27101

After

Nacimiento- Surface  
Ojo Alamo-Not Logged

Fruitland 1081'  
Pictured Cliffs 1089'

Lewis 1286'  
Chacra 1474'

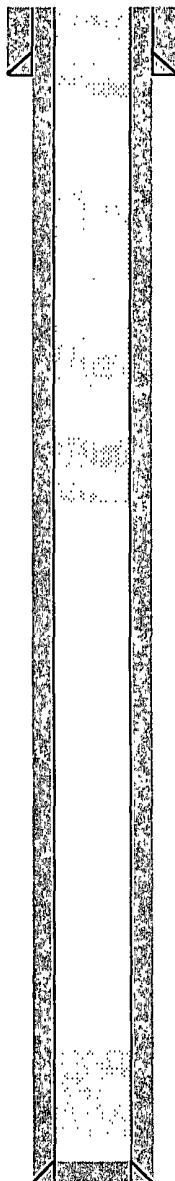
Cliff House 1917'

Menefee 2546'

Point Lookout 3585'

Mancos 3775'

Gallup 4624'



8-5/8" 24# J-55 set @ 318'. Circ. cmt to surface.

Old perfs: 4746-4756' (to be squeezed)  
New perfs: 4775-4840'

5-1/2" 15.5# K-55 set @ 4952'

**UNITED STATES DEPARTMENT OF THE INTERIOR  
BUREAU OF LAND MANAGEMENT  
FARMINGTON DISTRICT OFFICE  
6251 COLLEGE BLVD.  
FARMINGTON, NEW MEXICO 87402**

Attachment to notice of  
Intention to Abandon:

Re: Permanent Abandonment  
Well: 2 Ginny Corbett

**CONDITIONS OF APPROVAL**

1. Plugging operations authorized are subject to the attached "General Requirements for Permanent Abandonment of Wells on Federal and Indian Lease."
2. Farmington Office is to be notified at least 24 hours before the plugging operations commence (505) 564-7750.
3. The following modifications to your plugging program are to be made:
  - a) Bring the top of the Gallup plug to 4536'.
  - b) Place the Pictured Cliffs/Fruitland plug from 1136' – 720'.

You are also required to place cement excesses per 4.2 and 4.4 of the attached General Requirements.

Office Hours: 7:45 a.m. to 4:30 p.m.