

District I
1625 N. French Dr., Hobbs, NM 88240
District II
1301 W. Grand Avenue, Artesia, NM 88210
District III
1000 Rio Brazos Road, Aztec, NM 87410
District IV
1220 S St Francis Dr., Santa Fe, NM 87505

State of New Mexico
Energy Minerals and Natural Resources

Oil Conservation Division
1220 South St. Francis Dr.
Santa Fe, NM 87505

Form C-141
Revised August 8, 2011

Submit 1 Copy to appropriate District Office to
accordance with 19.15.29 NMAC.

Release Notification and Corrective Action

OPERATOR

☐ Initial Report ☒ Final Report

Name of Company ConocoPhillips Company	Contact Crystal Tafoya
Address 3401 East 30th St, Farmington, NM	Telephone No. (505) 326-9837
Facility Name: Lindrith B Unit 5	Facility Type: Gas Well

Surface Owner BLM	Mineral Owner BLM (SF-078913)	API No. 30-039-22384
--------------------------	--------------------------------------	-----------------------------

LOCATION OF RELEASE

Unit Letter E	Section 21	Township 24N	Range 3W	Feet from the 1921	North/South Line North	Feet from the 861	East/West Line West	County Rio Arriba
-------------------------	----------------------	------------------------	--------------------	------------------------------	----------------------------------	-----------------------------	-------------------------------	-----------------------------

Latitude 36.297821 Longitude 107.16739

NATURE OF RELEASE

Type of Release Produced Fluids	Volume of Release 396 yds	Volume Recovered
Source of Release Below Grade Tank	Date and Hour of Occurrence 5/29/2012	Date and Hour of Discovery
Was Immediate Notice Given? <input type="checkbox"/> Yes <input type="checkbox"/> No <input checked="" type="checkbox"/> Not Required	If YES, To Whom?	
By Whom?	Date and Hour	
Was a Watercourse Reached? <input type="checkbox"/> Yes <input checked="" type="checkbox"/> No	If YES, Volume Impacting the Watercourse.	

If a Watercourse was Impacted, Describe Fully.*
N/A

**RCVD AUG 29 '12
OIL CONS. DIV.**

Describe Cause of Problem and Remedial Action Taken.*
Below Grade Tank Closure Activities



DIST. 3

Describe Area Affected and Cleanup Action Taken.*

Historical hydrocarbon impacted soil was found during the BGT closure for the subject well. The excavation was 30'X25'X12' and 396yds of soil was transported to TNT landfarm and 396yds of clean soil was transported from Aztec Machine and TNT landfarm and placed in the excavation site. The soil sampling report is attached for review.

I hereby certify that the information given above is true and complete to the best of my knowledge and understand that pursuant to NMOCD rules and regulations all operators are required to report and/or file certain release notifications and perform corrective actions for releases which may endanger public health or the environment. The acceptance of a C-141 report by the NMOCD marked as "Final Report" does not relieve the operator of liability should their operations have failed to adequately investigate and remediate contamination that pose a threat to ground water, surface water, human health or the environment. In addition, NMOCD acceptance of a C-141 report does not relieve the operator of responsibility for compliance with any other federal, state, or local laws and/or regulations.

OIL CONSERVATION DIVISION

Signature: 	Approved by Environmental Specialist: 	
Printed Name: Crystal Tafoya		
Title: Field Environmental Specialist	Approval Date: 9/06/2012	Expiration Date:
E-mail Address: crystal.tafoya@conocophillips.com	Conditions of Approval:	Attached <input type="checkbox"/>
Date: 8/28/12 Phone: (505) 326-9837		

* Attach Additional Sheets If Necessary

nJK 1225053163



Animas Environmental Services, LLC

www.animasenvironmental.com

August 1, 2012

Ashley Maxwell
ConocoPhillips
San Juan Business Unit
Office 216-2
5525 Hwy 64
Farmington, New Mexico 87401

624 E. Comanche
Farmington, NM 87401
505-564-2281

Durango, Colorado
970-403-3274

**RE: Initial Release Assessment and Final Excavation Report
Lindrith B #5
Rio Arriba County, New Mexico**

Dear Ms. Maxwell:

On April 27 and May 30, 2012, Animas Environmental Services, LLC (AES) completed an initial release assessment and environmental clearance of the final excavation limits at the Lindrith B #5, located in Rio Arriba County, New Mexico. The initial excavation was completed by CoP contractors prior to AES' arrival to the location on April 27, 2012. The final excavation was also completed by contractors prior to AES' arrival to the location on May 30, 2012. The historical contamination was discovered during a production tank reset at the location, and volume of the release is unknown.

1.0 Site Information

1.1 Location

Location - SW¼ NW¼, Section 21, T24N, R3W, Rio Arriba County, New Mexico
Well Head Latitude/Longitude - N36.29789 and W107.16797, respectively
Release Location Latitude/Longitude - N36.29811 and W107.16824, respectively
Land Jurisdiction - Private

Figure 1. Topographic Site Location Map

Figure 2. Aerial Site Map, April 2012

Figure 3. Initial Assessment Soil Sample Locations and Results, April 2012

Figure 4. Final Excavation Soil Sample Locations and Results, May 2012

1.2 NMOCD Ranking

Prior to site work, the New Mexico Oil Conservation Division (NMOCD) database was reviewed. No prior ranking information was located, and no other ranking information was located. Additionally, the New Mexico Office of the State Engineer (NMOSE) database was reviewed, and no registered water wells are located within 1,000 feet of

the location. Once on site, AES personnel assessed the ranking using topographical interpretation, Global Positioning System (GPS) elevation readings, and visual reconnaissance. AES personnel concluded that depth to groundwater at the site was greater than 100 feet below ground surface (bgs), and the location is not within a well-head protection area. The site is located approximately 328 feet west-southwest of an unnamed tributary to Medio Wash. The site location has been assigned a ranking score of 10 per the NMOCD *Guidelines for Leaks, Spills, and Releases* (1993).

1.3 Release Assessments

AES was initially contacted by Ashley Maxwell of CoP on April 26, 2012, and on April 27, 2012, Tami Ross and Zachary Trujillo of AES completed the release assessment field work. The assessment included collection and field screening of 10 samples from five test holes around the excavation, two samples from the walls of the excavation, and one sample from the stockpile stored in the excavation. Based on the field screening and laboratory analysis results, AES recommended further excavation of the release area and removal of the initial excavated stockpile stored along the southwest wall inside the excavation. Sample locations and excavation extents are shown on Figure 3.

On May 30, 2012, AES returned to the location to collect confirmation soil samples of the excavation. The field screening activities included collection of five confirmation soil samples of the walls and base of the excavation. The final excavation was approximately 25 feet by 24 feet by 13 feet in depth. Sample locations and final excavation extents are shown on Figure 4.

2.0 Soil Sampling

A total of ten soil samples and five 5-point composite soil samples were collected during the assessments. All soil samples were field-screened for volatile organic compounds (VOCs) and were also analyzed for total petroleum hydrocarbons (TPH), with the exception of S-3 which was not analyzed for TPH. Five of the soil samples collected during the initial assessment (TH-1 through TH-4 and S-1) and two of the soil samples collected from the final excavation (SC-3 and SC-5) were submitted for laboratory analysis.

2.1 Field Screening

2.1.1 Volatile Organic Compounds

Field-screening for VOC vapors was conducted with a photo-ionization detector (PID) organic vapor meter (OVM). Before beginning field screening, the PID-OVM was first calibrated with 100 parts per million (ppm) isobutylene gas.

2.1.2 Total Petroleum Hydrocarbons

Field TPH samples were analyzed per USEPA Method 418.1 using a Buck Scientific Model HC-404 Total Hydrocarbon Analyzer Infrared Spectrometer (Buck). A 3-point calibration was completed prior to conducting soil analyses. Field analytical protocol followed AES's *Standard Operating Procedure: Field Analysis Total Petroleum Hydrocarbons per EPA Method 418.1*.

2.2 Laboratory Analyses

The soil samples (TH-1 through TH-4, S-1, SC-3 and SC-5) collected for laboratory analysis were placed into new, clean, laboratory-supplied containers, which were then labeled, placed on ice, and logged onto a sample chain of custody record. Samples were maintained on ice until delivery to the analytical laboratory, Hall Environmental Analysis Laboratory (Hall) in Albuquerque, New Mexico. Soil samples were laboratory analyzed for:

- Benzene, toluene, ethylbenzene, and xylene (BTEX) per U.S. Environmental Protection Agency (USEPA) Method 8021B/8260B.

Soil samples TH-1, TH-3, TH-4 and SC-5 were additionally laboratory analyzed for:

- TPH for gasoline range organics (GRO) and diesel range organics (DRO) per USEPA Method 8015B.

2.3 Field Screening and Laboratory Analytical Results

On April 27, 2012, initial assessment field screening results for VOCs via OVM showed concentrations ranging from 8.1 ppm in TH-5 up to 2,425 ppm in TH-2. Field TPH concentrations ranged from 143 mg/kg in TH-5 up to 2,200 mg/kg in S-1.

On May 30, 2012, final excavation field screening results for VOCs via OVM showed concentrations ranging from 5.6 ppm in SC-1 to 319 ppm in SC-3. Field TPH concentrations ranged from 164 mg/kg in SC-1 up to 1,140 mg/kg in SC-3. Results are included below in Table 1 and on Figures 3 and 4. The AES Field Screening Reports are attached.

Table 1. Soil Field Screening VOCs and TPH Results
Lindrith B #5 Release Assessment and Final Excavation, April and May 2012

Sample ID	Date Sampled	Sample Depth (ft bgs)	VOCs via OVM (ppm)	Field TPH (mg/kg)
NMOCD Action Level*			100	1,000
TH-1	4/27/12	10	141	155
		12	1,091	323
TH-2	4/27/12	10	2,425	1,920
		11.5	472	244
TH-3	4/27/12	10	919	350
TH-4	4/27/12	10	1,681	589
TH-5	4/27/12	10	8.1	143
S-1	4/27/12	NM	1,906	2,200
S-2	4/27/12	6	14.4	174
S-3	4/27/12	6	18.4	NA
SC-1	5/30/12	1 to 13	5.6	164
SC-2	5/30/12	1 to 13	46.1	326
SC-3	5/30/12	1 to 13	319	1,140
SC-4	5/30/12	1 to 13	8.3	526
SC-5	5/30/12	13	270	336

NA – not analyzed

*Action level determined by the NMOCD ranking score per *NMOCD Guidelines for Leaks, Spills, and Releases* (August 1993)

For the initial release assessment on April 27, 2012, laboratory analyses for TH-1 through TH-4 and S-1 were used to confirm field screening results. Benzene concentrations were reported below the laboratory detection limits (0.025 mg/kg and 0.12 mg/kg) in all samples. BTEX concentrations ranged from below the laboratory detection limit of 0.23 mg/kg in TH-3 up to 2.1 mg/kg in S-1. TPH concentrations (as GRO/DRO) which exceeded the NMOCD action level of 1,000 mg/kg were reported in TH-2 (1,181 mg/kg) and S-1 (1,060 mg/kg). Final TPH results over the NMOCD action level of 1,000 mg/kg were used to provide recommendations for the area needing further excavation.

Laboratory analytical results from the final excavation samples on May 30, 2012, showed that confirmation samples SC-3 and SC-5 were below laboratory detection limits for benzene and total BTEX. TPH concentrations (as GRO/DRO) in SC-3 were reported at

30 mg/kg and 420 mg/kg, respectively. All laboratory analytical results are presented in Table 2 and on Figure 3. Laboratory analytical reports are attached.

Table 2. Laboratory Analytical Results – Benzene, BTEX and TPH
Lindrith B # Release Assessment and Final Excavation, April and May 2012

<i>Sample ID</i>	<i>Date Sampled</i>	<i>Sample Depth (ft bgs)</i>	<i>Benzene (mg/kg)</i>	<i>BTEX (mg/kg)</i>	<i>GRO (mg/kg)</i>	<i>DRO (mg/kg)</i>
NMOCD Action Level*			10	50	1,000	
TH-1	4/27/12	12	<0.12	<1.12	NA	NA
TH-2	4/27/12	10	<0.12	<1.12	71	1,110
TH-3	4/27/12	10	<0.025	<0.23	NA	NA
TH-4	4/27/12	10	<0.12	<1.12	NA	NA
S-1	4/27/12	NM	<0.12	2.1	120	940
SC-3	5/30/12	1 to 13	<0.10	<0.50	30	420
SC-5	5/30/12	13	<0.10	<0.50	NA	NA

NA – Not Analyzed

*Action level determined by the NMOCD ranking score per *NMOCD Guidelines for Leaks, Spills, and Releases* (August 1993)

3.0 Conclusions and Recommendations

Action levels for releases are determined by the NMOCD ranking score per *NMOCD Guidelines for Leaks, Spills, and Releases* (August 1993), and the site was assigned a NMOCD ranking of 10.

On April 27, 2012, AES conducted an initial assessment of an existing excavation associated with a historical release from the former production tank at the Lindrith B #5, located in Rio Arriba County, New Mexico. Field screening showed concentrations above the NMOCD action levels of 100 ppm VOCs and 1,000 mg/kg TPH in TH-1 through TH-4 and S-1. The highest VOC concentration was 2,425 ppm in TH-2 at 10 feet bgs, and the highest TPH concentration was reported in S-1 with 2,200 mg/kg.


Laboratory analytical results from samples collected on April 27, 2012, showed that TPH concentrations were above the NMOCD action levels of 1,000 mg/kg in TH-2 (1,181 mg/kg) and S-1 (1,060 mg/kg). Based on field screening and laboratory results, continued excavation was recommended for the location.

On May 30, 2012, a final assessment of the excavation area was completed. Field screening results of the excavation extents showed that VOC and TPH concentrations were below applicable NMOCD action levels for SC-1, SC-2, and SC-4. The VOC concentration exceeded the NMOCD action level of 100 ppm in SC-3 (319 ppm) and SC-5 (270 ppm). Field TPH concentrations in SC-3 were also above the 1,000 mg/kg NMOCD action level at 1,140 mg/kg. However, laboratory analyses confirmed that benzene, total BTEX and TPH (as GRO/DRO) concentrations were below the applicable NMOCD action levels in these samples (SC-3 and SC-5).

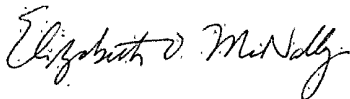
Based on the final field screening and laboratory analytical results of the excavation of petroleum contaminated soils at the Lindrith B #5, benzene, total BTEX, and TPH concentrations were below applicable NMOCD action levels. No further work is recommended.

If you have any questions about this report or site conditions, please do not hesitate to contact Deborah Watson at (505) 564-2281.

Sincerely,



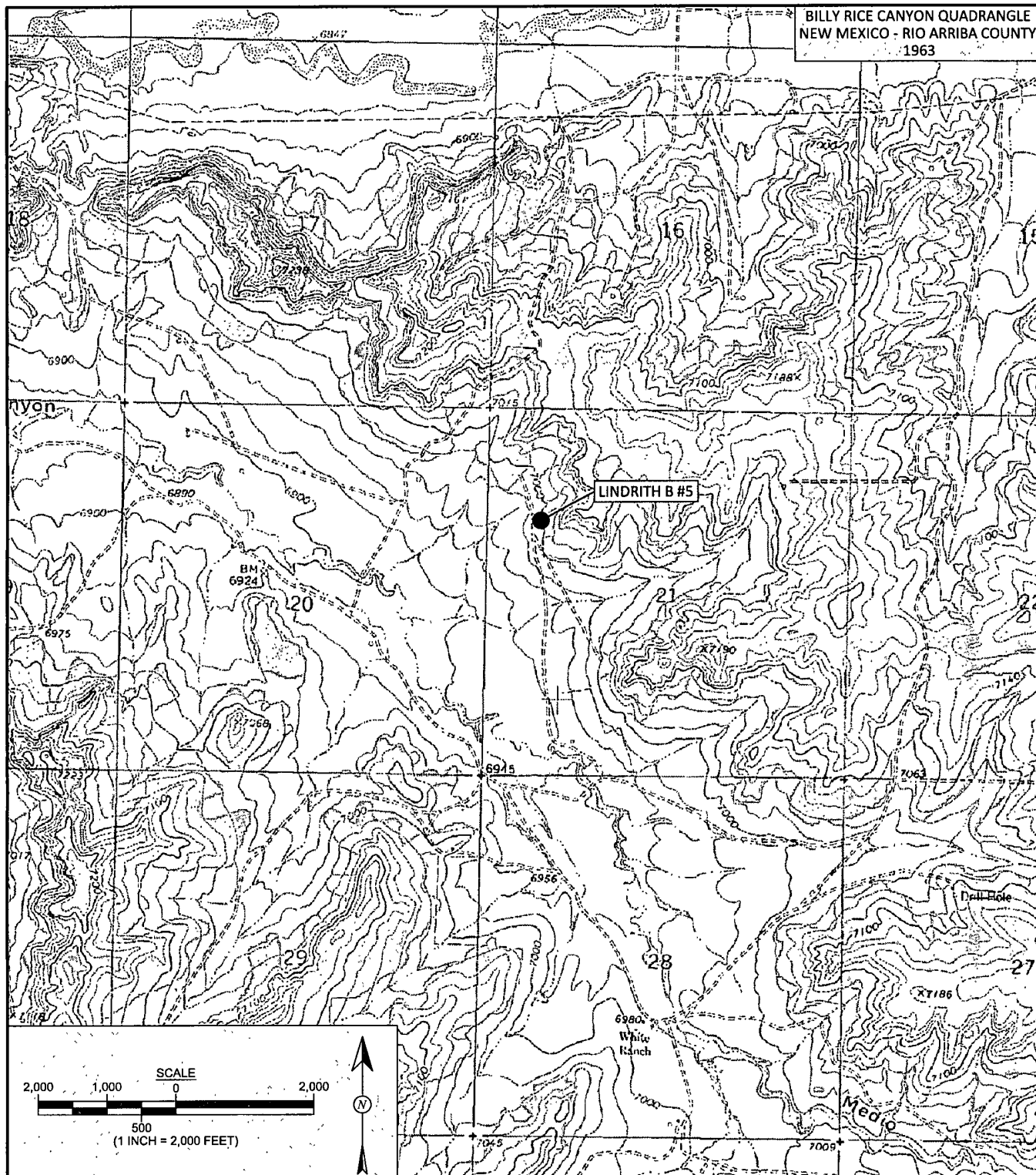
Heather M. Woods
Staff Geologist



Elizabeth McNally, PE

Attachments:

- Figure 1. Topographic Site Location Map
- Figure 2. Aerial Site Map, April 2012
- Figure 3. Initial Assessment Soil Sample Locations and Results, April 2012
- Figure 4. Final Excavation Soil Sample Locations and Results, May 2012
- AES Field Screening Report 042712
- AES Field Screening Report 053012
- Hall Laboratory Analytical Report 1205009
- Hall Laboratory Analytical Report 1205B89



Animas Environmental Services, LLC

DRAWN BY:

N. Willis

DATE DRAWN:

April 27, 2012

REVISIONS BY:

N. Willis

DATE REVISED:

April 27, 2012

CHECKED BY:

T. Ross

DATE CHECKED:

May 2, 2012

APPROVED BY:

E. McNally

DATE APPROVED:

August 1, 2012

FIGURE 1

TOPOGRAPHIC SITE LOCATION MAP

ConocoPhillips
Lindrith B #5
RIO ARRIBA COUNTY, NEW MEXICO
SW¼, NW¼, SECTION 21, T24N, R3W
N36.29789, W107.16797

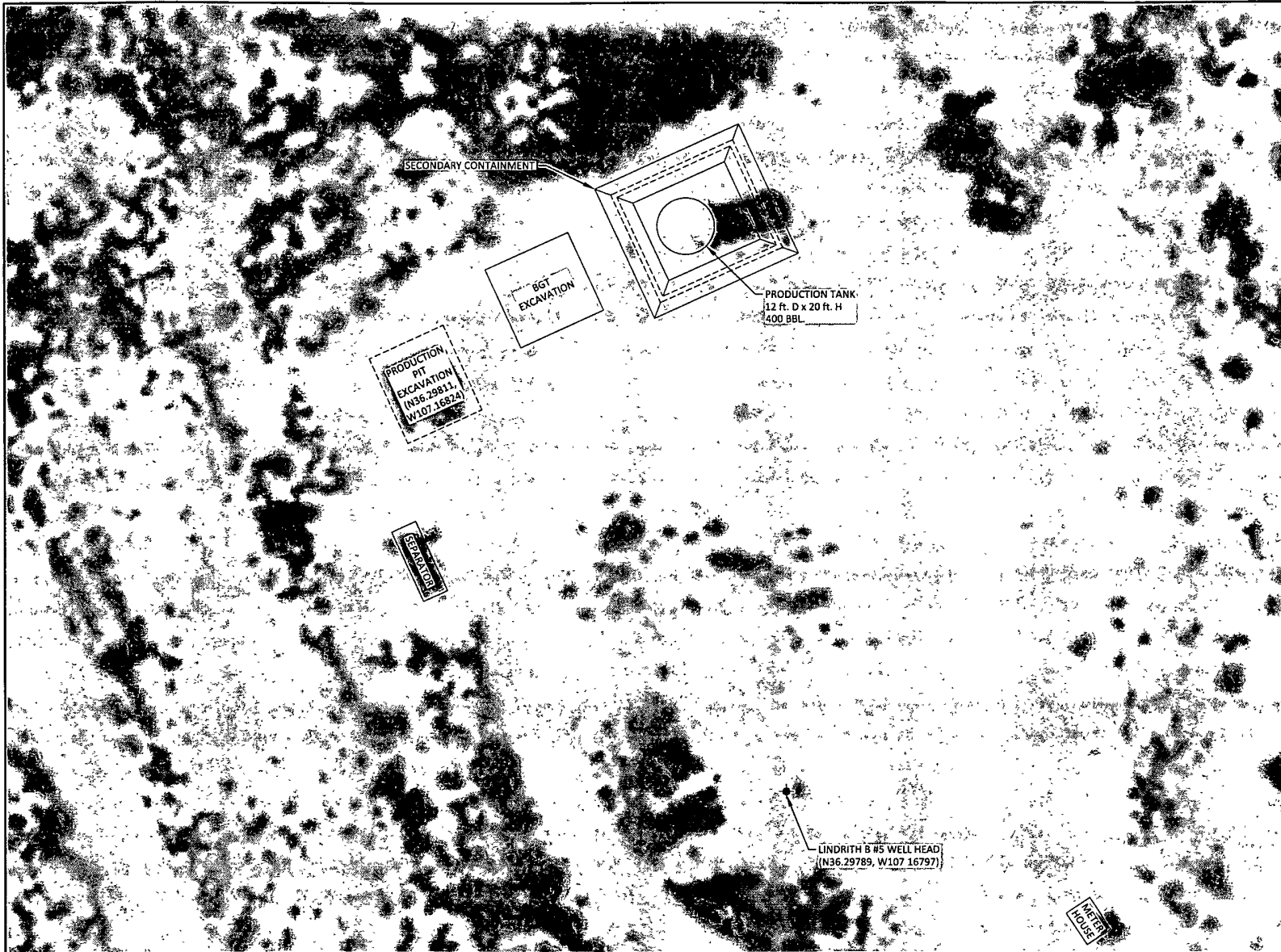


FIGURE 2

AERIAL SITE MAP
ConocoPhillips
Lindrith B #5
RIO ARriba COUNTY, NEW MEXICO
SW¼, NW¼, SECTION 21, T24N, R3W
N36.29789, W107.16797



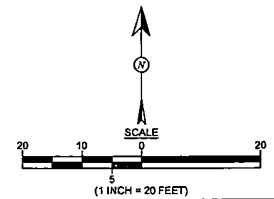
Animas Environmental Services, LLC

DRAWN BY: N. Willis	DATE DRAWN: April 27, 2012
REVISIONS BY: C. Lameman	DATE REVISED: July 6, 2012
CHECKED BY: H. Woods	DATE CHECKED: July 6, 2012
APPROVED BY: E McNally	DATE APPROVED: August 1, 2012

LEGEND

----- SECONDARY CONTAINMENT

AERIAL SOURCE: (c) 2012 MICROSOFT CORPORATION- AVAILABLE EXCLUSIVELY BY DIGITALGLOBE



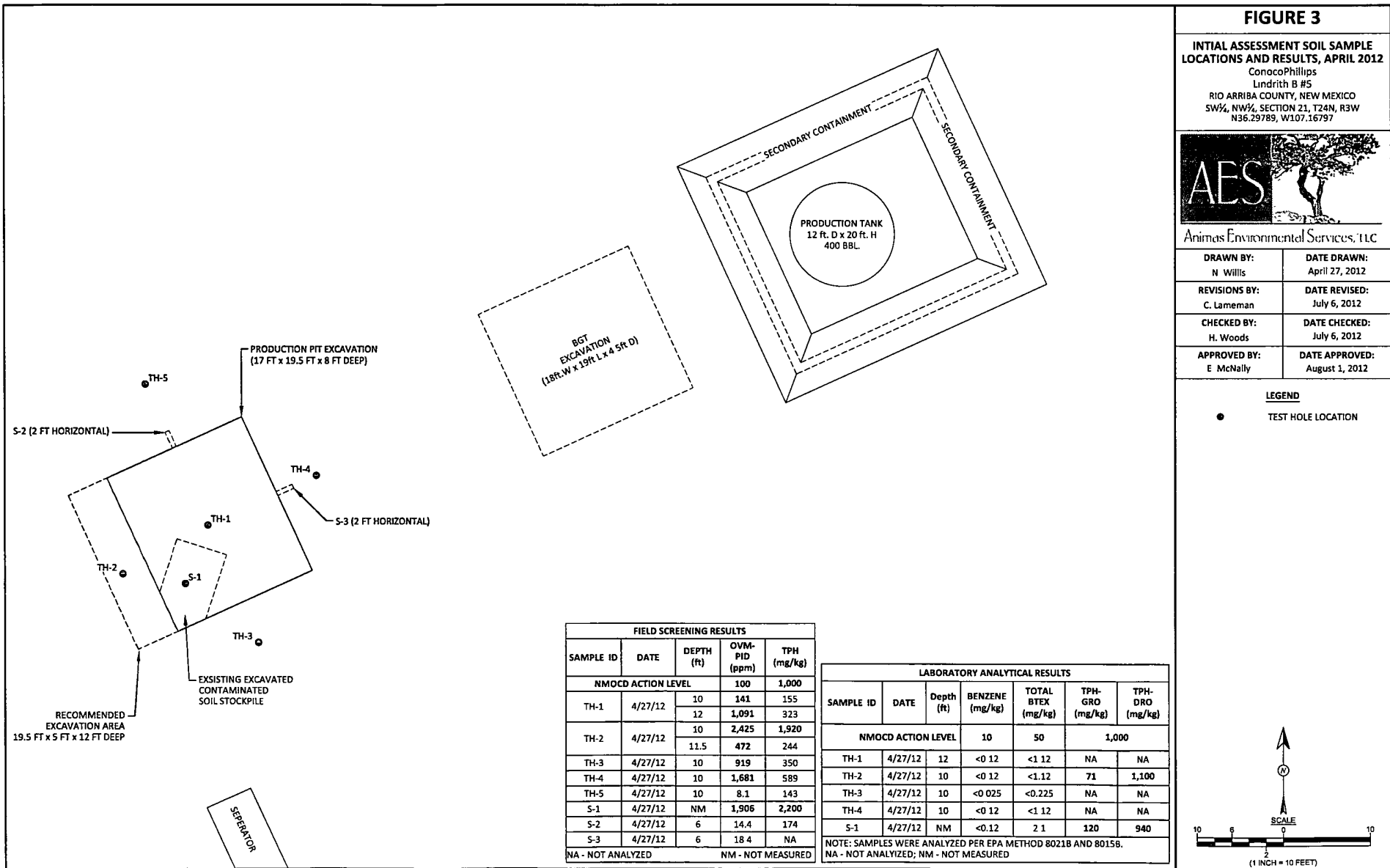


FIGURE 4

**FINAL EXCAVATION SOIL
SAMPLE LOCATIONS AND RESULTS
MAY 2012**
ConocoPhillips
Lindrieth B #5
RIO ARriba COUNTY, NEW MEXICO
SW¼, NW¼, SECTION 21, T24N, R3W
N36 29789, W107.16797

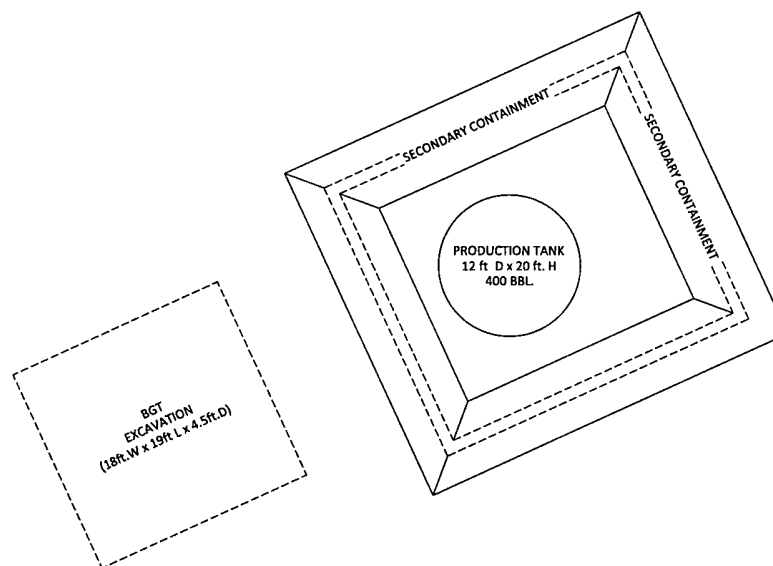
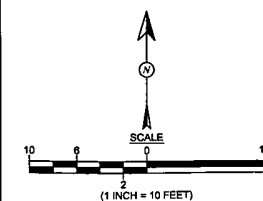


Animas Environmental Services, LLC

DRAWN BY: N Willis	DATE DRAWN: April 27, 2012
REVISIONS BY: C Lameman	DATE REVISED: June 4, 2012
CHECKED BY: D Watson	DATE CHECKED: June 4, 2012
APPROVED BY: E. McNally	DATE APPROVED: August 1, 2012

LEGEND

- 5-POINT COMPOSITE SAMPLE LOCATIONS



Field Screening Results				
Sample ID	Date	Depth (ft)	OVM-PID (ppm)	TPH (mg/kg)
NMOCD ACTION LEVEL			100	1,000
SC-1	5/30/12	1 to 13	5.6	164
SC-2	5/30/12	1 to 13	46.1	326
SC-3	5/30/12	1 to 13	319	1,140
SC-4	5/30/12	1 to 13	8.3	526
SC-5	5/30/12	13	270	336

Laboratory Analytical Results						
Sample ID	Date	Depth (ft)	Benzene (mg/kg)	Total BTEX (mg/kg)	TPH-GRO (mg/kg)	TPH-DRO (mg/kg)
NMOCD ACTION LEVEL			10	50	1,000	
SC-3	5/30/12	1 to 13	<0.10	<0.50	30	420
SC-5	5/30/12	13	<0.10	<0.50	NA	NA

NOTE: SAMPLES WERE ANALYZED PER EPA METHOD 8260B AND/OR 8015B.
NA - NOT ANALYZED

SEPARATOR

AES Field Screening Report



Animas Environmental Services, LLC

www.animasenvironmental.com

624 E. Comanche
Farmington, NM 87401
505-564-2281

Durango, Colorado
970-403-3274

Client: ConocoPhillips

Project Location: Lindrith B #5

Date: 4/27/2012

Matrix: Soil

Sample ID	Collection Date	Time of Sample Collection	Sample Location	OVM (ppm)	Field TPH Analysis Time	Field TPH* (mg/kg)	TPH PQL (mg/kg)	DF	TPH Analysts Initials
TH-1 @ 10'	4/27/2012	10:25	Base	141	10:57	155	20.0	1	TCR
TH-1 @ 12'	4/27/2012	10:40	Base	1,091	11:03	323	20.0	1	TCR
S-1	4/27/2012	11:20	Spoil Pile	1,906	11:45	2,200	20.0	1	TCR
TH-2 @ 10'	4/27/2012	12:30	West	2,425	12:42	1920	20.0	1	TCR
TH-2 @ 11.5'	4/27/2012	12:39	West	472	13:07	244	20.0	1	TCR
TH-3 @ 10'	4/27/2012	13:37	South	919	13:51	350	20.0	1	TCR
TH-4 @ 10'	4/27/2012	14:00	East	1,681	14:22	588	20.0	1	TCR
TH-5 @ 10'	4/27/2012	14:50	North	8.1	15:10	143	20.0	1	TCR
S-2	4/27/2012	15:03	North	14.4	15:21	174	20.0	1	TCR
S-3	4/27/2012	15:10	East	18.4					

PQL Practical Quantitation Limit

Total Petroleum Hydrocarbons - USEPA 418.1

ND Not Detected at the Reporting Limit

DF Dilution Factor

*Field TPH concentrations recorded may be below PQL.

Analyst:

Jami Ross

AES Field Screening Report



Animas Environmental Services, LLC

www.animasenvironmental.com

624 E. Comanche
Farmington, NM 87401
505-564-2281

Durango, Colorado
970-403-3274

Client: ConocoPhillips

Project Location: Lindrith B #5

Date: 5/30/2012

Matrix: Soil

Sample ID	Collection Date	Time of Sample Collection	Sample Location	OVM (ppm)	Field TPH Analysis Time	Field TPH* (mg/kg)	TPH PQL (mg/kg)	DF	TPH Analysts Initials
SC-1	5/30/2012	9:55	North	5.6	10:48	164	20.0	1	DAW
SC-2	5/30/2012	9:53	South	46.1	10:52	326	20.0	1	DAW
SC-3	5/30/2012	11:48	East	319	12:06	1,140	20.0	1	DAW
SC-4	5/30/2012	9:57	West	8.3	10:55	526	20.0	1	DAW
SC-5	5/30/2012	11:36	Base	270	15:59	336	20.0	1	DAW

PQL Practical Quantitation Limit

ND Not Detected at the Reporting Limit

DF Dilution Factor

*Field TPH concentrations recorded may be below PQL.

Total Petroleum Hydrocarbons - USEPA 418.1

Analyst: 



*Hall Environmental Analysis Laboratory
4901 Hawkins NE
Albuquerque, NM 87109
TEL. 505-345-3975 FAX. 505-345-4107
Website: www.hallenvironmental.com*

May 03, 2012

Tami Ross
Animas Environmental Services
624 East Comanche
Farmington, NM 87401
TEL: (505) 793-2072
FAX

RE: Lindrith B #5

OrderNo.: 1205009

Dear Tami Ross:

Hall Environmental Analysis Laboratory received 5 sample(s) on 5/1/2012 for the analyses presented in the following report.

These were analyzed according to EPA procedures or equivalent. To access our accredited tests please go to www.hallenvironmental.com or the state specific web sites. See the sample checklist and/or the Chain of Custody for information regarding the sample receipt temperature and preservation. Data qualifiers or a narrative will be provided if the sample analysis or analytical quality control parameters require a flag. All samples are reported as received unless otherwise indicated.

Please don't hesitate to contact HEAL for any additional information or clarifications.

Sincerely,

Andy Freeman
Laboratory Manager
4901 Hawkins NE
Albuquerque, NM 87109

Analytical ReportLab Order **1205009**Date Reported: **5/3/2012****Hall Environmental Analysis Laboratory, Inc.****CLIENT:** Animas Environmental Services**Client Sample ID:** TH-1@12'**Project:** Lindrith B #5**Collection Date:** 4/27/2012 10:40:00 AM**Lab ID:** 1205009-001**Matrix:** MEOH (SOIL)**Received Date:** 5/1/2012 9:58:00 AM

Analyses	Result	RL	Qual	Units	DF	Date Analyzed
EPA METHOD 8021B: VOLATILES						Analyst: NSB
Benzene	ND	0.12		mg/Kg	5	5/1/2012 2:55:55 PM
Toluene	ND	0.25		mg/Kg	5	5/1/2012 2:55:55 PM
Ethylbenzene	ND	0.25		mg/Kg	5	5/1/2012 2:55:55 PM
Xylenes, Total	ND	0.50		mg/Kg	5	5/1/2012 2:55:55 PM
Surr: 4-Bromofluorobenzene	94.6	80-120		%REC	5	5/1/2012 2:55:55 PM

Qualifiers:	*X	Value exceeds Maximum Contaminant Level.	B	Analyte detected in the associated Method Blank
	E	Value above quantitation range	H	Holding times for preparation or analysis exceeded
	J	Analyte detected below quantitation limits	ND	Not Detected at the Reporting Limit
	R	RPD outside accepted recovery limits	RL	Reporting Detection Limit
	S	Spike Recovery outside accepted recovery limits		

Analytical Report

Lab Order 1205009

Date Reported: 5/3/2012

Hall Environmental Analysis Laboratory, Inc.**CLIENT:** Animas Environmental Services**Client Sample ID:** S-1**Project:** Lindrith B #5**Collection Date:** 4/27/2012 11:20:00 AM**Lab ID:** 1205009-002**Matrix:** MEOH (SOIL)**Received Date:** 5/1/2012 9:58:00 AM

Analyses	Result	RL	Qual	Units	DF	Date Analyzed
EPA METHOD 8015B: DIESEL RANGE ORGANICS						Analyst: JMP
Diesel Range Organics (DRO)	940	98		mg/Kg	10	5/1/2012 12:11:06 PM
Surr: DNOP	0	77.4-131	S	%REC	10	5/1/2012 12:11:06 PM
EPA METHOD 8015B: GASOLINE RANGE						Analyst: NSB
Gasoline Range Organics (GRO)	120	25		mg/Kg	5	5/1/2012 12:03:15 PM
Surr: BFB	347	69.7-121	S	%REC	5	5/1/2012 12:03:15 PM
EPA METHOD 8021B: VOLATILES						Analyst: NSB
Benzene	ND	0.12		mg/Kg	5	5/1/2012 12:03:15 PM
Toluene	ND	0.25		mg/Kg	5	5/1/2012 12:03:15 PM
Ethylbenzene	ND	0.25		mg/Kg	5	5/1/2012 12:03:15 PM
Xylenes, Total	2.1	0.50		mg/Kg	5	5/1/2012 12:03:15 PM
Surr: 4-Bromofluorobenzene	102	80-120		%REC	5	5/1/2012 12:03:15 PM

Qualifiers: * / X Value exceeds Maximum Contaminant Level.
E Value above quantitation range
J Analyte detected below quantitation limits
R RPD outside accepted recovery limits
S Spike Recovery outside accepted recovery limits

B Analyte detected in the associated Method Blank
H Holding times for preparation or analysis exceeded
ND Not Detected at the Reporting Limit
RL Reporting Detection Limit

Analytical ReportLab Order **1205009**Date Reported: **5/3/2012****Hall Environmental Analysis Laboratory, Inc.****CLIENT:** Animas Environmental Services**Client Sample ID:** TH-2@10'**Project:** Lindrith B #5**Collection Date:** 4/27/2012 12:30:00 PM**Lab ID:** 1205009-003**Matrix:** MEOH (SOIL)**Received Date:** 5/1/2012 9:58:00 AM

Analyses	Result	RL	Qual	Units	DF	Date Analyzed
EPA METHOD 8015B: DIESEL RANGE ORGANICS						Analyst: JMP
Diesel Range Organics (DRO)	1,100	98		mg/Kg	10	5/1/2012 12:37:35 PM
Surr: DNOP	0	77.4-131	S	%REC	10	5/1/2012 12:37:35 PM
EPA METHOD 8015B: GASOLINE RANGE						Analyst: NSB
Gasoline Range Organics (GRO)	71	25		mg/Kg	5	5/1/2012 12:31:59 PM
Surr: BFB	328	69.7-121	S	%REC	5	5/1/2012 12:31:59 PM
EPA METHOD 8021B: VOLATILES						Analyst: NSB
Benzene	ND	0.12		mg/Kg	5	5/1/2012 12:31:59 PM
Toluene	ND	0.25		mg/Kg	5	5/1/2012 12:31:59 PM
Ethylbenzene	ND	0.25		mg/Kg	5	5/1/2012 12:31:59 PM
Xylenes, Total	ND	0.50		mg/Kg	5	5/1/2012 12:31:59 PM
Surr: 4-Bromofluorobenzene	103	80-120		%REC	5	5/1/2012 12:31:59 PM

Qualifiers: */X Value exceeds Maximum Contaminant Level.
E Value above quantitation range
J Analyte detected below quantitation limits
R RPD outside accepted recovery limits
S Spike Recovery outside accepted recovery limits

B Analyte detected in the associated Method Blank
H Holding times for preparation or analysis exceeded
ND Not Detected at the Reporting Limit
RL Reporting Detection Limit

Analytical Report

Lab Order 1205009

Date Reported: 5/3/2012

Hall Environmental Analysis Laboratory, Inc.**CLIENT:** Animas Environmental Services**Client Sample ID:** TH-3@10'**Project:** Lindrith B #5**Collection Date:** 4/27/2012 1:37:00 PM**Lab ID:** 1205009-004**Matrix:** MEOH (SOIL)**Received Date:** 5/1/2012 9:58:00 AM

Analyses	Result	RL	Qual	Units	DF	Date Analyzed
EPA METHOD 8021B: VOLATILES						Analyst: NSB
Benzene	ND	0.025		mg/Kg	1	5/1/2012 1:00.45 PM
Toluene	ND	0.050		mg/Kg	1	5/1/2012 1:00.45 PM
Ethylbenzene	ND	0.050		mg/Kg	1	5/1/2012 1:00.45 PM
Xylenes, Total	ND	0.10		mg/Kg	1	5/1/2012 1:00.45 PM
Surr. 4-Bromofluorobenzene	98.5	80-120		%REC	1	5/1/2012 1:00.45 PM

Qualifiers:

- *X Value exceeds Maximum Contaminant Level.
- E Value above quantitation range
- J Analyte detected below quantitation limits
- R RPD outside accepted recovery limits
- S Spike Recovery outside accepted recovery limits

- B Analyte detected in the associated Method Blank
- H Holding times for preparation or analysis exceeded
- ND Not Detected at the Reporting Limit
- RL Reporting Detection Limit

Analytical Report

Lab Order 1205009

Date Reported: 5/3/2012

Hall Environmental Analysis Laboratory, Inc.**CLIENT:** Animas Environmental Services**Client Sample ID:** TH-4@10'**Project:** Lindrith B #5**Collection Date:** 4/27/2012 2:00:00 PM**Lab ID:** 1205009-005**Matrix:** MEOH (SOIL)**Received Date:** 5/1/2012 9:58:00 AM

Analyses	Result	RL	Qual	Units	DF	Date Analyzed
EPA METHOD 8021B: VOLATILES						Analyst: NSB
Benzene	ND	0.12		mg/Kg	5	5/1/2012 1:29:28 PM
Toluene	ND	0.25		mg/Kg	5	5/1/2012 1:29:28 PM
Ethylbenzene	ND	0.25		mg/Kg	5	5/1/2012 1:29:28 PM
Xylenes, Total	ND	0.50		mg/Kg	5	5/1/2012 1:29:28 PM
Surr: 4-Bromofluorobenzene	98.1	80-120		%REC	5	5/1/2012 1:29:28 PM

Qualifiers: */X Value exceeds Maximum Contaminant Level
 E Value above quantitation range
 J Analyte detected below quantitation limits
 R RPD outside accepted recovery limits
 S Spike Recovery outside accepted recovery limits

B Analyte detected in the associated Method Blank
H Holding times for preparation or analysis exceeded
ND Not Detected at the Reporting Limit
RL Reporting Detection Limit

QC SUMMARY REPORT

Hall Environmental Analysis Laboratory, Inc.

WO#: 1205009

03-May-12

Client: Animas Environmental Services

Project: Lindrith B #5

Sample ID	MB-1753		SampType:	MBLK		TestCode:	EPA Method 8015B: Diesel Range Organics				
Client ID:	PBS		Batch ID:	1753		RunNo:	2477				
Prep Date:	5/1/2012		Analysis Date:	5/1/2012		SeqNo:	69167		Units:	mg/Kg	
Analyte	Result	PQL	SPK value	SPK Ref Val	%REC	LowLimit	HighLimit	%RPD	RPDLimit	Qual	
Diesel Range Organics (DRO)	ND	10									
Surr DNOP	9.8		10.00		97.9	77.4	131				

Sample ID	LCS-1753		SampType:	LCS		TestCode:	EPA Method 8015B: Diesel Range Organics				
Client ID:	LCSS		Batch ID:	1753		RunNo:	2477				
Prep Date	5/1/2012		Analysis Date:	5/1/2012		SeqNo:	69214		Units:	mg/Kg	
Analyte	Result	PQL	SPK value	SPK Ref Val	%REC	LowLimit	HighLimit	%RPD	RPDLimit	Qual	
Diesel Range Organics (DRO)	40	10	50.00	0	80.9	62.7	139				
Surr: DNOP	4.4		5.000		88.3	77.4	131				

Sample ID	1204A81-001AMS		SampType:	MS		TestCode:	EPA Method 8015B: Diesel Range Organics				
Client ID:	BatchQC		Batch ID:	1753		RunNo:	2507				
Prep Date:	5/1/2012		Analysis Date:	5/2/2012		SeqNo:	69746		Units:	mg/Kg	
Analyte	Result	PQL	SPK value	SPK Ref Val	%REC	LowLimit	HighLimit	%RPD	RPDLimit	Qual	
Diesel Range Organics (DRO)	39	9.7	48.31	0	81.3	57.2	146				
Surr. DNOP	4.5		4.831		93.4	77.4	131				

Sample ID	1204A81-001AMSD		SampType: MSD		TestCode: EPA Method 8015B: Diesel Range Organics					
Client ID:	BatchQC		Batch ID: 1753		RunNo: 2507					
Prep Date.	5/1/2012		Analysis Date 5/2/2012		SeqNo 69763		Units: mg/Kg			
Analyte	Result	PQL	SPK value	SPK Ref Val	%REC	LowLimit	HighLimit	%RPD	RPDLimit	Qual
Diesel Range Organics (DRO)	41	9.9	49.65	0	83.4	57.2	146	5.31	26.7	
Surr DNOP	4.5		4.965		91.4	77.4	131	0	0	

Qualifiers:

*X Value exceeds Maximum Contaminant Level
E Value above quantitation range
J Analyte detected below quantitation limits
R RPD outside accepted recovery limits

B Analyte detected in the associated Method Blank
H Holding times for preparation or analysis exceeded
ND Not Detected at the Reporting Limit
RL Reporting Detection Limit

QC SUMMARY REPORT

Hall Environmental Analysis Laboratory, Inc.

WO#: 1205009

03-May-12

Client: Animas Environmental Services

Project: Lindrith B #5

Sample ID	5ML RB	SampType	MBLK	TestCode	EPA Method 8015B: Gasoline Range					
Client ID	PBS	Batch ID	R2492	RunNo	2492					
Prep Date		Analysis Date	5/1/2012	SeqNo	69736	Units	mg/Kg			
Analyte	Result	PQL	SPK value	SPK Ref Val	%REC	LowLimit	HighLimit	%RPD	RPDLimit	Qual
Gasoline Range Organics (GRO)	ND	5.0								
Surr. BFB	1,000		1,000		101	69.7	121			

Sample ID	2.5UG GRO LCS	SampType	LCS	TestCode	EPA Method 8015B: Gasoline Range					
Client ID	LCSS	Batch ID	R2492	RunNo	2492					
Prep Date		Analysis Date	5/2/2012	SeqNo	69737	Units	mg/Kg			
Analyte	Result	PQL	SPK value	SPK Ref Val	%REC	LowLimit	HighLimit	%RPD	RPDLimit	Qual
Gasoline Range Organics (GRO)	28	5.0	25.00	0	112	98.5	133			
Surr. BFB	1,100		1,000		115	69.7	121			

Qualifiers:

*X Value exceeds Maximum Contaminant Level.
E Value above quantitation range
J Analyte detected below quantitation limits
R RPD outside accepted recovery limits

B Analyte detected in the associated Method Blank
H Holding times for preparation or analysis exceeded
ND Not Detected at the Reporting Limit
RL Reporting Detection Limit

QC SUMMARY REPORT

Hall Environmental Analysis Laboratory, Inc.

WO#: 1205009

03-May-12

Client: Animas Environmental Services

Project: Lindrith B #5

Sample ID	5ML RB	SampType	MBLK	TestCode	EPA Method 8021B: Volatiles					
Client ID:	PBS	Batch ID:	R2492	RunNo:	2492					
Prep Date:		Analysis Date:	5/1/2012	SeqNo:	69750	Units:	mg/Kg			
Analyte	Result	PQL	SPK value	SPK Ref Val	%REC	LowLimit	HighLimit	%RPD	RPDLimit	Qual
Benzene	ND	0.050								
Toluene	ND	0.050								
Ethylbenzene	ND	0.050								
Xylenes, Total	ND	0.10								
Surr. 4-Bromofluorobenzene	0.92		1.000		92.2	80	120			

Sample ID	100NG BTEX LCS	SampType	LCS	TestCode	EPA Method 8021B: Volatiles					
Client ID:	LCSS	Batch ID:	R2492	RunNo:	2492					
Prep Date:		Analysis Date:	5/2/2012	SeqNo:	69751	Units:	mg/Kg			
Analyte	Result	PQL	SPK value	SPK Ref Val	%REC	LowLimit	HighLimit	%RPD	RPDLimit	Qual
Benzene	0.91	0.050	1.000	0	90.9	83.3	107			
Toluene	0.93	0.050	1.000	0	93.4	74.3	115			
Ethylbenzene	0.91	0.050	1.000	0	91.4	80.9	122			
Xylenes, Total	2.7	0.10	3.000	0	91.3	85.2	123			
Surr. 4-Bromofluorobenzene	1.0		1.000		99.7	80	120			

Qualifiers:

*X Value exceeds Maximum Contaminant Level.
E Value above quantitation range
J Analyte detected below quantitation limits
R RPD outside accepted recovery limits

B Analyte detected in the associated Method Blank
H Holding times for preparation or analysis exceeded
ND Not Detected at the Reporting Limit
RL Reporting Detection Limit



Hall Environmental Analysis Laboratory
4901 Hawkins NE
Albuquerque, NM 87105
TEL: 505-345-3975 FAX: 505-345-4107
Website: www.hallenvironmental.com

Sample Log-In Check List

Client Name: Animas Environmental

Work Order Number: 1205009

Received by/date:

[Signature] 05/01/12

Logged By: Ashley Gallegos

5/1/2012 9:58:00 AM

[Signature]

Completed By: Ashley Gallegos

5/1/2012 10:03:20 AM

[Signature]

Reviewed By:

Chain of Custody

- | | | | |
|----------------------------------|----------------|----|---------------|
| 1. Were seals intact? | Yes | No | Not Present ✓ |
| 2. Is Chain of Custody complete? | Yes ✓ | No | Not Present |
| 3. How was the sample delivered? | <u>Courier</u> | | |

Log In

- | | | | | |
|---|-----|----|----------------|--|
| 4. Coolers are present? (see 19. for cooler specific information) | Yes | ✓ | No | NA |
| 5. Was an attempt made to cool the samples? | Yes | ✓ | No | NA |
| 6. Were all samples received at a temperature of >0° C to 6.0°C | Yes | ✓ | No | NA |
| 7. Sample(s) in proper container(s)? | Yes | ✓ | No | |
| 8. Sufficient sample volume for indicated test(s)? | Yes | ✓ | No | |
| 9. Are samples (except VOA and ONG) properly preserved? | Yes | ✓ | No | |
| 10. Was preservative added to bottles? | Yes | No | ✓ | NA |
| 11. VOA vials have zero headspace? | Yes | No | No VOA Vials ✓ | |
| 12. Were any sample containers received broken? | Yes | No | ✓ | |
| 13. Does paperwork match bottle labels?
(Note discrepancies on chain of custody) | Yes | ✓ | No | # of preserved bottles checked for pH: |
| 14. Are matrices correctly identified on Chain of Custody? | Yes | ✓ | No | (<2 or >12 unless noted) |
| 15. Is it clear what analyses were requested? | Yes | ✓ | No | Adjusted? |
| 16. Were all holding times able to be met?
(If no, notify customer for authorization.) | Yes | ✓ | No | Checked by: |

Special Handling (if applicable)

- | | | | |
|---|-----|----|------|
| 17. Was client notified of all discrepancies with this order? | Yes | No | NA ✓ |
|---|-----|----|------|

Person Notified:

Date:

By Whom:

Via:

eMail

Phone

Fax

In Person

Regarding:

Client Instructions:

18. Additional remarks:

19. Cooler Information

Cooler No	Temp °C	Condition	Seal Intact	Seal No	Seal Date	Signed By
1	1.0	Good	Yes			

<h1>Chain-of-Custody Record</h1>		Turn-Around Time:	
Client: <u>Animas Environmental Services</u>		<input type="checkbox"/> Standard <input checked="" type="checkbox"/> Rush <u>SAME DAY</u>	
Mailing Address: <u>624 E Conanche</u> <u>Farmington NM 87401</u>		Project Name: <u>LINDRITH B #5</u>	
Phone #: <u>505 564 2281</u>		Project #:	
email or Fax#: <u>ross@animasenvironmental.com</u>		Project Manager:	
QA/QC Package: <u>Mike W. Smith</u> <u>conocophillips.com</u>		<u>T. Ross</u>	
<input checked="" type="checkbox"/> Standard <input type="checkbox"/> Level 4 (Full Validation)		Sampler: <u>TCR</u>	
Accreditation <input type="checkbox"/> NELAP <input type="checkbox"/> Other _____		On/Off: <input checked="" type="checkbox"/> Yes <input type="checkbox"/> No	
<input type="checkbox"/> EDD (Type)		Sample Temperature: <u>10</u>	

☐ Standard ☒ Rush SAME DAY

Project Name: LINDRUTH B #5

Project Manager:

Sampler: TCR

Once ☒ Yes ☐ No

Sample Temperature / °C

www.hallenvironmental.com

4901 Hawkins NE - Albuquerque, NM 87109

Tel. 505-345-3975 Fax 505-345-4107

Analysis Request

[illegible]

Date:	Time:	Relinquished by:
1/20/12	1762	Jami Ross

Received by:	Date	Time
Christine L. L. L.	4/30/12	1702

Date:	Time:	Relinquished by:
4/30/12	1721	Christine Wheeler

Received by: [Signature] Date 05/01/12 Time 0958

Remarks:	BILL TO CONOCO PHILLIPS BILLING INFO WILL BE FORWARDED UPON RECEIPT
----------	---

~~If necessary, samples submitted to Hall Environmental may be subcontracted to other accredited laboratories. This serves as notice of this possibility. Any sub-contracted data will be clearly notated on the analytical report.~~



*Hall Environmental Analysis Laboratory
4901 Hawkins NE
Albuquerque, NM 87109
TEL: 505-345-3975 FAX: 505-345-4107
Website: www.hallenvironmental.com*

June 01, 2012

Ross Kennemer

Animas Environmental Services
624 East Comanche
Farmington, NM 87401
TEL: (505) 486-1776
FAX (505) 324-2022

RE: CoP Lindrith B #5

OrderNo.: 1205B89

Dear Ross Kennemer:

Hall Environmental Analysis Laboratory received 2 sample(s) on 5/31/2012 for the analyses presented in the following report.

These were analyzed according to EPA procedures or equivalent. To access our accredited tests please go to www.hallenvironmental.com or the state specific web sites. See the sample checklist and/or the Chain of Custody for information regarding the sample receipt temperature and preservation. Data qualifiers or a narrative will be provided if the sample analysis or analytical quality control parameters require a flag. All samples are reported as received unless otherwise indicated.

Please don't hesitate to contact HEAL for any additional information or clarifications.

Sincerely,

A handwritten signature in black ink, appearing to read "Andy Freeman".

Andy Freeman
Laboratory Manager
4901 Hawkins NE
Albuquerque, NM 87109

Analytical Report

Lab Order 1205B89

Date Reported: 6/1/2012

Hall Environmental Analysis Laboratory, Inc.**CLIENT:** Animas Environmental Services**Client Sample ID:** SC-3**Project:** CoP Lindrith B #5**Collection Date:** 5/30/2012 11:48:00 AM**Lab ID:** 1205B89-001**Matrix:** MEOH (SOIL)**Received Date:** 5/31/2012 10:10:00 AM

Analyses	Result	RL	Qual	Units	DF	Date Analyzed
EPA METHOD 8015B: DIESEL RANGE ORGANICS						Analyst: JMP
Diesel Range Organics (DRO)	420	10		mg/Kg	1	5/31/2012 11:03:57 AM
Surr. DNOP	115	82.1-121		%REC	1	5/31/2012 11:03:57 AM
EPA METHOD 8260B: VOLATILES SHORT LIST						Analyst: BDH
Benzene	ND	0.10		mg/Kg	2	5/31/2012 3:03:45 PM
Toluene	ND	0.10		mg/Kg	2	5/31/2012 3:03:45 PM
Ethylbenzene	ND	0.10		mg/Kg	2	5/31/2012 3:03:45 PM
Xylenes, Total	ND	0.20		mg/Kg	2	5/31/2012 3:03:45 PM
Surr: 1,2-Dichloroethane-d4	82.6	70-130		%REC	2	5/31/2012 3:03:45 PM
Surr: 4-Bromofluorobenzene	120	70-130		%REC	2	5/31/2012 3:03:45 PM
Surr: Dibromofluoromethane	93.4	71.7-132		%REC	2	5/31/2012 3:03:45 PM
Surr: Toluene-d8	94.3	70-130		%REC	2	5/31/2012 3:03:45 PM
EPA METHOD 8015B MOD: GASOLINE RANGE						Analyst: BDH
Gasoline Range Organics (GRO)	30	10		mg/Kg	2	5/31/2012 3:03:45 PM
Surr BFB	120	70-130		%REC	2	5/31/2012 3:03:45 PM

Qualifiers: * / X Value exceeds Maximum Contaminant Level.
E Value above quantitation range
J Analyte detected below quantitation limits
R RPD outside accepted recovery limits
S Spike Recovery outside accepted recovery limits

B Analyte detected in the associated Method Blank
H Holding times for preparation or analysis exceeded
ND Not Detected at the Reporting Limit
RL Reporting Detection Limit

Analytical Report

Lab Order 1205B89

Date Reported: 6/1/2012

Hall Environmental Analysis Laboratory, Inc.

CLIENT: Animas Environmental Services

Client Sample ID: SC-5

Project: CoP Lindrith B #5

Collection Date: 5/30/2012 11:36:00 AM

Lab ID: 1205B89-002

Matrix: MEOH (SOIL)

Received Date: 5/31/2012 10:10:00 AM

Analyses	Result	RL	Qual	Units	DF	Date Analyzed
EPA METHOD 8260B: VOLATILES SHORT LIST						Analyst: BDH
Benzene	ND	0.10		mg/Kg	2	5/31/2012 3:33:37 PM
Toluene	ND	0.10		mg/Kg	2	5/31/2012 3:33:37 PM
Ethylbenzene	ND	0.10		mg/Kg	2	5/31/2012 3:33:37 PM
Xylenes, Total	ND	0.20		mg/Kg	2	5/31/2012 3:33:37 PM
Surr. 1,2-Dichloroethane-d4	86.5	70-130		%REC	2	5/31/2012 3:33:37 PM
Surr. 4-Bromofluorobenzene	92.9	70-130		%REC	2	5/31/2012 3:33:37 PM
Surr. Dibromofluoromethane	91.0	71.7-132		%REC	2	5/31/2012 3:33:37 PM
Surr. Toluene-d8	95.2	70-130		%REC	2	5/31/2012 3:33:37 PM

Qualifiers: *X Value exceeds Maximum Contaminant Level.
E Value above quantitation range
J Analyte detected below quantitation limits
R RPD outside accepted recovery limits
S Spike Recovery outside accepted recovery limits

B Analyte detected in the associated Method Blank
H Holding times for preparation or analysis exceeded
ND Not Detected at the Reporting Limit
RL Reporting Detection Limit

QC SUMMARY REPORT

Hall Environmental Analysis Laboratory, Inc.

WO#: 1205B89

01-Jun-12

Client: Animas Environmental Services

Project: CoP Lindrith B #5

Sample ID	MB-2164	SampType:	MBLK		TestCode:	EPA Method 8015B: Diesel Range Organics				
Client ID:	PBS	Batch ID:	2164		RunNo:	3105				
Prep Date	5/30/2012	Analysis Date:	5/31/2012		SeqNo:	85860	Units:	mg/Kg		
Analyte	Result	PQL	SPK value	SPK Ref Val	%REC	LowLimit	HighLimit	%RPD	RPDLimit	Qual
Diesel Range Organics (DRO)	ND	10								
Motor Oil Range Organics (MRO)	ND	50								
Surr DNOP	11		10.00		113	82.1	121			

Sample ID	LCS-2164		SampType:	LCS		TestCode:	EPA Method 8015B: Diesel Range Organics				
Client ID:	LCSS		Batch ID:	2164		RunNo:	3105				
Prep Date:	5/30/2012		Analysis Date:	5/31/2012		SeqNo	85861		Units. mg/Kg		
Analyte	Result	PQL	SPK value	SPK Ref Val	%REC	LowLimit	HighLimit	%RPD	RPDLimit	Qual	
Diesel Range Organics (DRO)	47	10	50.00	0	93.4	52.6	130				
Surr. DNOP	47		5.000		94.4	82.1	121				

Sample ID	1205B43-008AMS		SampType:	MS		TestCode	EPA Method 8015B: Diesel Range Organics				
Client ID:	BatchQC		Batch ID:	2164		RunNo:	3105				
Prep Date:	5/30/2012		Analysis Date:	5/31/2012		SeqNo:	86167		Units: mg/Kg		
Analyte	Result	PQL	SPK value	SPK Ref Val	%REC	LowLimit	HighLimit	%RPD	RPDLimit	Qual	
Diesel Range Organics (DRO)	120	9.6	48.17	7.673	234	57.2	146			S	
Surr. DNOP	4.5		4.817		92.5	82.1	121				

Sample ID	1205B43-008AMSD		SampType: MSD		TestCode: EPA Method 8015B: Diesel Range Organics					
Client ID:	BatchQC		Batch ID 2164		RunNo: 3105					
Prep Date:	5/30/2012		Analysis Date: 5/31/2012		SeqNo 86201		Units: mg/Kg			
Analyte	Result	PQL	SPK value	SPK Ref Val	%REC	LowLimit	HighLimit	%RPD	RPDLimit	Qual
Diesel Range Organics (DRO)	300	9.8	48.97	7.673	601	57.2	146	86.0	24.5	SR
Surr. DNOP	4.6		4.897		94.8	82.1	121	0	0	

Qualifiers:

*X Value exceeds Maximum Contaminant Level.
E Value above quantitation range
J Analyte detected below quantitation limits
R RPD outside accepted recovery limits

B Analyte detected in the associated Method Blank
H Holding times for preparation or analysis exceeded
ND Not Detected at the Reporting Limit
RL Reporting Detection Limit

QC SUMMARY REPORT

Hall Environmental Analysis Laboratory, Inc.

WO#: 1205B89

01-Jun-12

Client: Animas Environmental Services

Project: CoP Lindrith B #5

Sample ID	mb-2160		SampType:	MBLK		TestCode:	EPA Method 8260B: Volatiles Short List			
Client ID:	PBS		Batch ID:	2160		RunNo.	3120			
Prep Date:	5/30/2012		Analysis Date:	5/31/2012		SeqNo.	86529		Units: mg/Kg	
Analyte	Result	PQL	SPK value	SPK Ref Val	%REC	LowLimit	HighLimit	%RPD	RPDLimit	Qual
Methyl tert-butyl ether (MTBE)	ND	0.050								
Benzene	ND	0.050								
1,2-Dichloroethane (EDC)	ND	0.050								
Toluene	ND	0.050								
Ethylbenzene	ND	0.050								
Xylenes, Total	ND	0.10								
1,2-Dibromoethane (EDB)	ND	0.050								
1,2,4-Trimethylbenzene	ND	0.050								
1,3,5-Trimethylbenzene	ND	0.050								
Naphthalene	ND	0.10								
2-Methylnaphthalene	ND	0.20								
1-Methylnaphthalene	ND	0.20								
Surr. 1,2-Dichloroethane-d4	0.43		0.5000		85.7	70	130			
Surr. 4-Bromofluorobenzene	0.45		0.5000		89.4	70	130			
Surr. Dibromofluoromethane	0.45		0.5000		90.2	71.7	132			
Surr. Toluene-d8	0.45		0.5000		89.9	70	130			

Sample ID	LCS-2160		SampType:	LCS		TestCode:	EPA Method 8260B: Volatiles Short List			
Client ID:	LCSS		Batch ID:	2160		RunNo.	3120			
Prep Date:	5/30/2012		Analysis Date:	5/31/2012		SeqNo.	86535		Units: mg/Kg	
Analyte	Result	PQL	SPK value	SPK Ref Val	%REC	LowLimit	HighLimit	%RPD	RPDLimit	Qual
Benzene	1.1	0.050	1.000	0	110	70.7	123			
Toluene	1.0	0.050	1.000	0	101	80	120			
Surr. 1,2-Dichloroethane-d4	0.43		0.5000		86.7	70	130			
Surr. 4-Bromofluorobenzene	0.45		0.5000		89.7	70	130			
Surr. Dibromofluoromethane	0.44		0.5000		88.0	71.7	132			
Surr. Toluene-d8	0.45		0.5000		90.0	70	130			

Qualifiers:

*/X Value exceeds Maximum Contaminant Level.

E Value above quantitation range

J Analyte detected below quantitation limits

R RPD outside accepted recovery limits

B Analyte detected in the associated Method Blank

H Holding times for preparation or analysis exceeded

ND Not Detected at the Reporting Limit

RL Reporting Detection Limit

QC SUMMARY REPORT

Hall Environmental Analysis Laboratory, Inc.

WO#: 1205B89

01-Jun-12

Client: Animas Environmental Services

Project: CoP Lindrith B #5

Sample ID	mb-2160	SampType:	MBLK	TestCode	EPA Method 8015B Mod: Gasoline Range					
Client ID:	PBS	Batch ID:	2160	RunNo:	3120					
Prep Date:	5/30/2012	Analysis Date:	5/31/2012	SeqNo:	86536	Units:	mg/Kg			
Analyte	Result	PQL	SPK value	SPK Ref Val	%REC	LowLimit	HighLimit	%RPD	RPDLimit	Qual
Gasoline Range Organics (GRO)	ND	5.0								
Surr BFB	450		500.0		89.4	70	130			

Sample ID	LCS-2160	SampType:	LCS	TestCode:	EPA Method 8015B Mod: Gasoline Range					
Client ID:	LCSS	Batch ID:	2160	RunNo:	3120					
Prep Date:	5/30/2012	Analysis Date:	5/31/2012	SeqNo:	86537	Units:	mg/Kg			
Analyte	Result	PQL	SPK value	SPK Ref Val	%REC	LowLimit	HighLimit	%RPD	RPDLimit	Qual
Gasoline Range Organics (GRO)	32	5.0	25.00	0	129	85	115			S
Surr BFB	450		500.0		90.0	70	130			

Qualifiers:

*X Value exceeds Maximum Contaminant Level.
E Value above quantitation range
J Analyte detected below quantitation limits
R RPD outside accepted recovery limits

B Analyte detected in the associated Method Blank
H Holding times for preparation or analysis exceeded
ND Not Detected at the Reporting Limit
RL Reporting Detection Limit



Hall Environmental Analysis Laboratory
4901 Hawkins NE
Albuquerque, NM 87105
TEL: 505-345-3975 FAX: 505-345-4107
Website: www.hallenvironmental.com

Sample Log-In Check List

Client Name: Animas Environmental

Work Order Number: 1205B89

Received by/date:

Logged By: Ashley Gallegos

05/31/12
5/31/2012 10:10:00 AM

Completed By: Ashley Gallegos

5/31/2012 10:13:54 AM

Reviewed By:

AT 05/31/12

Chain of Custody

- | | | | | |
|----------------------------------|---------|----|-------------|-------------|
| 1. Were seals intact? | Yes | No | Not Present | ✓ |
| 2. Is Chain of Custody complete? | Yes | ✓ | No | Not Present |
| 3. How was the sample delivered? | Courier | | | |

Log In

- | | | | | |
|--|-----|----|--------------|--|
| 4. Coolers are present? (see 19. for cooler specific information) | Yes | ✓ | No | NA |
| 5. Was an attempt made to cool the samples? | Yes | ✓ | No | NA |
| 6. Were all samples received at a temperature of $>0^{\circ}\text{C}$ to 6.0°C | Yes | ✓ | No | NA |
| 7. Sample(s) in proper container(s)? | Yes | ✓ | No | |
| 8. Sufficient sample volume for indicated test(s)? | Yes | ✓ | No | |
| 9. Are samples (except VOA and ONG) properly preserved? | Yes | ✓ | No | |
| 10. Was preservative added to bottles? | Yes | No | ✓ | NA |
| 11. VOA vials have zero headspace? | Yes | No | No VOA Vials | ✓ |
| 12. Were any sample containers received broken? | Yes | No | ✓ | |
| 13. Does paperwork match bottle labels?
(Note discrepancies on chain of custody) | Yes | ✓ | No | # of preserved bottles checked for pH: |
| 14. Are matrices correctly identified on Chain of Custody? | Yes | ✓ | No | (<2 or >12 unless noted) |
| 15. Is it clear what analyses were requested? | Yes | ✓ | No | Adjusted? |
| 16. Were all holding times able to be met?
(If no, notify customer for authorization.) | Yes | ✓ | No | Checked by: |

Special Handling (if applicable)

- | | | | | |
|---|-----|----|----|---|
| 17. Was client notified of all discrepancies with this order? | Yes | No | NA | ✓ |
|---|-----|----|----|---|

Person Notified:

Date:

By Whom:

Via:

eMail

Phone

Fax

In Person

Regarding:

Client Instructions:

18. Additional remarks:

19. Cooler Information

Cooler No	Temp $^{\circ}\text{C}$	Condition	Seal Intact	Seal No	Seal Date	Signed By
1	1.8	Good	Yes			

Client: Animas Environmental
Services LLC

Mailing Address: 624 E Comanche
Farmington NM 87401

Phone #: 505 564 2281

email or Fax#: dy.watson@animasenvironmental.com

QA/QC Package:

☒ Standard ☐ Level 4 (Full Validation)

Accreditation

☐ NELAP ☐ Other _____

☐ EDD (Type) _____

☐ Standard ☒ Rush same day

CoP Lindrith B#5

Project Manager:

R. Kenner

Sampler: D Watson

On Ice: ☒ Yes ☐ No

Sample Temperature: 21.5

Date	Time	Matrix	Sample Request ID
------	------	--------	-------------------

Container Type and #	Material	Quantity	Weight	Volume	Notes
1
2
3
4
5
6
7
8
9
10
11
12
13
14
15
16
17
18
19
20
21
22
23
24
25
26
27
28
29
30
31
32
33
34
35
36
37
38
39
40
41
42
43
44
45
46
47
48
49
50
51
52
53
54
55
56
57
58
59
60
61
62
63
64
65
66
67
68
69
70
71
72
73
74
75
76
77
78
79
80
81
82
83
84
85
86
87
88
89
90</	

Preservative
Type

HEALING

5-30-12 1/48 so'l SC-3

1-402/1 moft
Ket

Med H

- 001

5-30-12	1/36	801	SC-5
---------	------	-----	------

1-402/1 meolt
1st


$$-1/\text{MeOH}$$

- 002

Date:	Time:	Relinquished by:
5/30/12	11:19	Debra Water

Received by:	Date	Time
Christine Walter	5/30/12	1619

Date:	Time:	Relinquished by:
5/30/12	1647	Christine Walters

Received by:	Date	Time
	05/31/12	10:10

Remarks:	Full to ConocoPhillips
----------	------------------------



HALL ENVIRONMENTAL ANALYSIS LABORATORY

www.hallenvironmental.com

4901 Hawkins NE - Albuquerque, NM 87109

Tel. 505-345-3975 Fax 505-345-4107

Analysis Request

[illegible]

A := D + t I - \lambda V - \lambda I

~~If necessary, samples submitted to Hall Environmental may be subcontracted to other accredited laboratories. This serves as notice of this possibility. Any sub-contracted data will be clearly noted on the analytical report.~~