

District I
1625 N. French Dr., Hobbs, NM 88240
District II
1301 W. Grand Avenue, Artesia, NM 88210
District III
1000 Rio Brazos Road, Aztec, NM 87410
District IV
1220 S. St. Francis Dr., Santa Fe, NM 87505

State of New Mexico
Energy Minerals and Natural Resources
Oil Conservation Division
1220 South St. Francis Dr.
Santa Fe, NM 87505

Form C-141
Revised August 8, 2011

Submit 1 Copy to appropriate District Office to
accordance with 19.15.29 NMAC.

Release Notification and Corrective Action

OPERATOR

☐ Initial Report ☒ Final Report


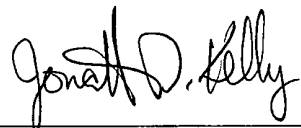
| | | |
|---|-------------------------------------|-----------------------------|
| Name of Company ConocoPhillips Company | Contact Crystal Tafoya | |
| Address 3401 East 30th St, Farmington, NM | Telephone No. (505) 326-9837 | |
| Facility Name: Lindrith B Unit 19 | Facility Type: Gas Well | |
| Surface Owner BLM | Mineral Owner BLM (SF-07891) | API No. 30-039-22715 |

LOCATION OF RELEASE

| | | | | | | | | |
|-------------------------|----------------------|------------------------|--------------------|------------------------------|----------------------------------|------------------------------|-------------------------------|-----------------------------|
| Unit Letter G | Section 27 | Township 24N | Range 3W | Feet from the 1810 | North/South Line North | Feet from the 1650 | East/West Line East | County Rio Arriba |
|-------------------------|----------------------|------------------------|--------------------|------------------------------|----------------------------------|------------------------------|-------------------------------|-----------------------------|

Latitude **36.283779** Longitude **107.1401**

NATURE OF RELEASE

| | | |
|--|---|---|
| Type of Release Produced Fluids | Volume of Release 162 yds | Volume Recovered |
| Source of Release Below Grade Tank | Date and Hour of Occurrence 5/21/2012 | Date and Hour of Discovery |
| Was Immediate Notice Given? <input type="checkbox"/> Yes <input type="checkbox"/> No <input checked="" type="checkbox"/> Not Required | If YES, To Whom? | |
| By Whom? | Date and Hour | |
| Was a Watercourse Reached? <input type="checkbox"/> Yes <input checked="" type="checkbox"/> No | If YES, Volume Impacting the Watercourse. | |
| If a Watercourse was Impacted, Describe Fully.* N/A | | RCVD AUG 29 '12 OIL CONS. DIV. |
| Describe Cause of Problem and Remedial Action Taken.* Below Grade Tank Closure Activities | | DIST. 3 |
| Describe Area Affected and Cleanup Action Taken.* Historical hydrocarbon impacted soil was found during the BGT closure for the subject well. The excavation was 20'X20'X12' and 162yds of soil was transported to TNT landfarm and 162yds of clean soil was transported from Aztec Machine and TNT landfarm and placed in the excavation site. The soil sampling report is attached for review. | | |
| I hereby certify that the information given above is true and complete to the best of my knowledge and understand that pursuant to NMOCD rules and regulations all operators are required to report and/or file certain release notifications and perform corrective actions for releases which may endanger public health or the environment. The acceptance of a C-141 report by the NMOCD marked as "Final Report" does not relieve the operator of liability should their operations have failed to adequately investigate and remediate contamination that pose a threat to ground water, surface water, human health or the environment. In addition, NMOCD acceptance of a C-141 report does not relieve the operator of responsibility for compliance with any other federal, state, or local laws and/or regulations. | | |
| Signature:  | OIL CONSERVATION DIVISION | |
| Printed Name: Crystal Tafoya | Approved by Environmental Specialist:  | |
| Title: Field Environmental Specialist | Approval Date: 9/06/2012 | Expiration Date: |
| E-mail Address: crystal.tafoya@conocophillips.com | Conditions of Approval: | Attached <input type="checkbox"/> |
| Date: 8/28/12 Phone: (505) 326-9837 | | |

* Attach Additional Sheets If Necessary

nJK 1225053755



Animas Environmental Services, LLC

www.animasenvironmental.com

August 20, 2012

Ashley Maxwell
ConocoPhillips
San Juan Business Unit
Office 216-2
5525 Hwy 64
Farmington, New Mexico 87401

624 E. Comanche
Farmington, NM 87401
505-564-2281

Durango, Colorado
970-403-3274

**RE: Initial Release Assessment and Final Excavation Report
Lindrith B #19
Rio Arriba County, New Mexico**

Dear Ms. Maxwell:

On April 24 and May 22, 2012, Animas Environmental Services, LLC (AES) completed an initial release assessment and environmental clearance of the final excavation limits at the Lindrith B #19, located in Rio Arriba County, New Mexico. ConocoPhillips (CoP) personnel observed staining underneath a production tank during planned removal and replacement operations. AES personnel observed 1-inch of standing water with oil on the surface at the former tank location during the initial assessment activities on April 24, 2012. The final excavation was completed by contractors prior to AES' arrival to the location on May 22, 2012.

1.0 Site Information

1.1 Location

Location - SW¼ NE¼, Section 27, T24N, R3W, Rio Arriba County, New Mexico
Well Head Latitude/Longitude - N36.28377 and W107.14071, respectively
Release Location Latitude/Longitude - N36.28402 and W107.14032, respectively
Land Jurisdiction - Bureau of Land Management (BLM)
Figure 1. Topographic Site Location Map
Figure 2. Aerial Site Map, April 2012
Figure 3. Initial Sample Locations and Results, April 2012
Figure 4. Final Excavation Soil Sample Locations and Results, May 2012

1.2 NMOCD Ranking

Prior to site work, the New Mexico Oil Conservation Division (NMOCD) database was reviewed, and no prior ranking information was located. Additionally, the New Mexico Office of the State Engineer (NMOSE) database was reviewed, and no registered water

wells are located within 1,000 feet of the location. Once on site, AES personnel assessed the ranking using topographical interpretation, Global Positioning System (GPS) elevation readings, and visual reconnaissance. AES personnel concluded that depth to groundwater at the site was greater than 100 feet below ground surface (bgs), and the location is not within a well-head protection area. The site is located approximately 300 feet east of an unnamed tributary to Medio Wash. The site was assessed a NMOCD ranking of 10.

1.3 Initial Release Assessment

AES was initially contacted by Ashley Maxwell of CoP on April 24, 2012, and the same day, Deborah Watson and Corwin Lameman of AES completed the release assessment field work. The assessment included collection and field screening of 36 soil samples from 11 test holes (TH-1 through TH-11) in the area around a removed production tank. Based on the field screening results, AES recommended excavation of the release area. Sample locations are shown on Figure 3.

On May 22, 2012, AES returned to the location to collect confirmation soil samples of the excavation. The field screening activities included collection of five confirmation soil samples of the walls and base of the excavation (SC-1 through SC-5). The final excavation was approximately 25 feet by 24 feet by 12 feet in depth. Sample locations and final excavation extents are shown on Figure 4.

2.0 Soil Sampling

A total of 36 soil samples and five 5-point composite soil samples were collected during the assessments. Soil samples were field-screened for volatile organic compounds (VOCs), and selected soil samples were also analyzed for total petroleum hydrocarbons (TPH).

2.1 Field Screening

2.1.1 Volatile Organic Compounds

Field screening for VOC vapors was conducted with a photo-ionization detector (PID) organic vapor meter (OVM). Before beginning field screening, the PID-OVM was first calibrated with 100 parts per million (ppm) isobutylene gas.

2.1.2 Total Petroleum Hydrocarbons

Field TPH samples were analyzed per USEPA Method 418.1 using a Buck Scientific Model HC-404 Total Hydrocarbon Analyzer Infrared Spectrometer (Buck). A 3-point calibration was completed prior to conducting soil analyses. Field analytical protocol followed

AES's Standard Operating Procedure: Field Analysis Total Petroleum Hydrocarbons per EPA Method 418.1.

2.2 Field Screening Results

On April 24, 2012, initial assessment field screening results for VOCs via OVM showed concentrations ranging from 0.8 ppm in TH-7 up to 4,034 ppm in TH-8. Field TPH concentrations ranged from 60.8 mg/kg in TH-7 up to 10,000 mg/kg in TH-1.

On May 22, 2012, final excavation field screening results for VOCs via OVM showed concentrations ranging from 5.0 ppm in SC-1 to 6.7 ppm in SC-2. Field TPH concentrations ranged from 45.1 mg/kg in SC-2 up to 157 mg/kg in SC-4. Results are included below in Table 1 and on Figures 3 and 4. The AES Field Screening Reports are attached.

Table 1. Soil Field Screening VOCs and TPH Results
Lindrith B #19 Initial Release Assessment and Final Excavation
April and May 2012

| Sample ID | Date Sampled | Sample Depth (ft bgs) | VOCs via OVM (ppm) | Field TPH (mg/kg) |
|------------------|---------------------|------------------------------|---------------------------|--------------------------|
| | | <i>NMOCD Action Level*</i> | <i>100</i> | <i>1,000</i> |
| TH-1 | 4/24/12 | 0.5 | 3,575 | 10,000 |
| TH-1 | 4/24/12 | 2 | 3,905 | 7,430 |
| TH-1 | 4/24/12 | 4 | 1,986 | 555 |
| TH-1 | 4/24/12 | 6.5 | 506 | 232 |
| TH-1 | 4/24/12 | 8 | 38.1 | 159 |
| TH-1 | 4/24/12 | 9 | 42.9 | 97.9 |
| TH-2 | 4/24/12 | 0.5 | 4,023 | 9,060 |
| TH-2 | 4/24/12 | 4 | 3,721 | 8,020 |
| TH-2 | 4/24/12 | 6 | 1,656 | NA |
| TH-2 | 4/24/12 | 8 | 109 | 114 |
| TH-2 | 4/24/12 | 9 | 413 | 113 |
| TH-3 | 4/24/12 | 0.5 | 3,802 | 8,980 |
| TH-3 | 4/24/12 | 2 | 3,230 | NA |
| TH-3 | 4/24/12 | 4 | 959 | 1,040 |
| TH-3 | 4/24/12 | 6 | 3,413 | NA |
| TH-3 | 4/24/12 | 8 | 94 | 533 |

| Sample ID | Date Sampled | Sample Depth (ft bgs) | VOCs via OVM (ppm) | Field TPH (mg/kg) |
|----------------------------|---------------------|------------------------------|---------------------------|--------------------------|
| <i>NMOCD Action Level*</i> | | | 100 | 1,000 |
| TH-3 | 4/24/12 | 9 | 93 | 262 |
| TH-4 | 4/24/12 | 0.5 | 3,591 | 4,260 |
| TH-4 | 4/24/12 | 2 | 3,538 | NA |
| TH-4 | 4/24/12 | 4 | 3,629 | 5,690 |
| TH-4 | 4/24/12 | 6 | 3,570 | NA |
| TH-4 | 4/24/12 | 9 | 226 | 128 |
| TH-5 | 4/24/12 | 0.5 | 11.5 | NA |
| TH-5 | 4/24/12 | 4 | 195 | 68.8 |
| TH-6 | 4/24/12 | 0.5 | 13.5 | NA |
| TH-6 | 4/24/12 | 4 | 2,960 | 933 |
| TH-7 | 4/24/12 | 0.5 | 0.8 | NA |
| TH-7 | 4/24/12 | 4 | 1.2 | 60.8 |
| TH-7 | 4/24/12 | 7 | 1.0 | NA |
| TH-8 | 4/24/12 | 0.5 | 3.2 | NA |
| TH-8 | 4/24/12 | 4 | 4,034 | 2,210 |
| TH-9 | 4/24/12 | 3 | 1.2 | NA |
| TH-10 | 4/24/12 | 4 | 2.6 | NA |
| TH-10 | 4/24/12 | 8 | 4.1 | NA |
| TH-11 | 4/24/12 | 4 | 5.5 | NA |
| TH-11 | 4/24/12 | 7 | 2.9 | NA |
| SC-1 | 5/22/12 | 1 to 12 | 5.0 | 46.4 |
| SC-2 | 5/22/12 | 12 | 6.7 | 45.1 |
| SC-3 | 5/22/12 | 1 to 12 | 6.6 | 74.7 |
| SC-4 | 5/22/12 | 1 to 12 | 6.1 | 157 |
| SC-5 | 5/22/12 | 1 to 12 | 5.1 | 111 |

NA – Not Analyzed

*Action level determined by the NMOCD ranking score per *NMOCD Guidelines for Leaks, Spills, and Releases* (August 1993)

3.0 Conclusions and Recommendations

On April 24, 2012, AES conducted an initial assessment associated with a release from a production tank at the Lindrith B #19, located in Rio Arriba County, New Mexico. Action levels for releases are determined by the NMOCD ranking score per *NMOCD Guidelines for Leaks, Spills, and Releases* (August 1993). Field screening showed concentrations above the NMOCD action levels of 100 ppm VOCs and 1,000 mg/kg TPH in TH-1 through TH-6 and TH-8. The highest VOC concentration was 4,034 ppm in TH-8 at 4 feet bgs, and the highest TPH concentration was reported in TH-1 at 0.5 feet bgs with 10,000 mg/kg. Based on field screening results, excavation of the release area was recommended for the location.

On May 22, 2012, a final assessment of the additional excavation area was completed. Field screening results of the excavation extents showed that VOC and TPH concentrations were below applicable NMOCD action levels for all of the final four walls and the base of the excavation.

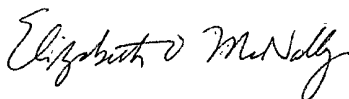
Based on the final field screening results of the excavation of petroleum contaminated soils at the Lindrith B #19, VOC and TPH concentrations were below applicable NMOCD action levels. No further work is recommended.

If you have any questions about this report or site conditions, please do not hesitate to contact Deborah Watson at (505) 564-2281.

Sincerely,



Heather Woods
Staff Geologist

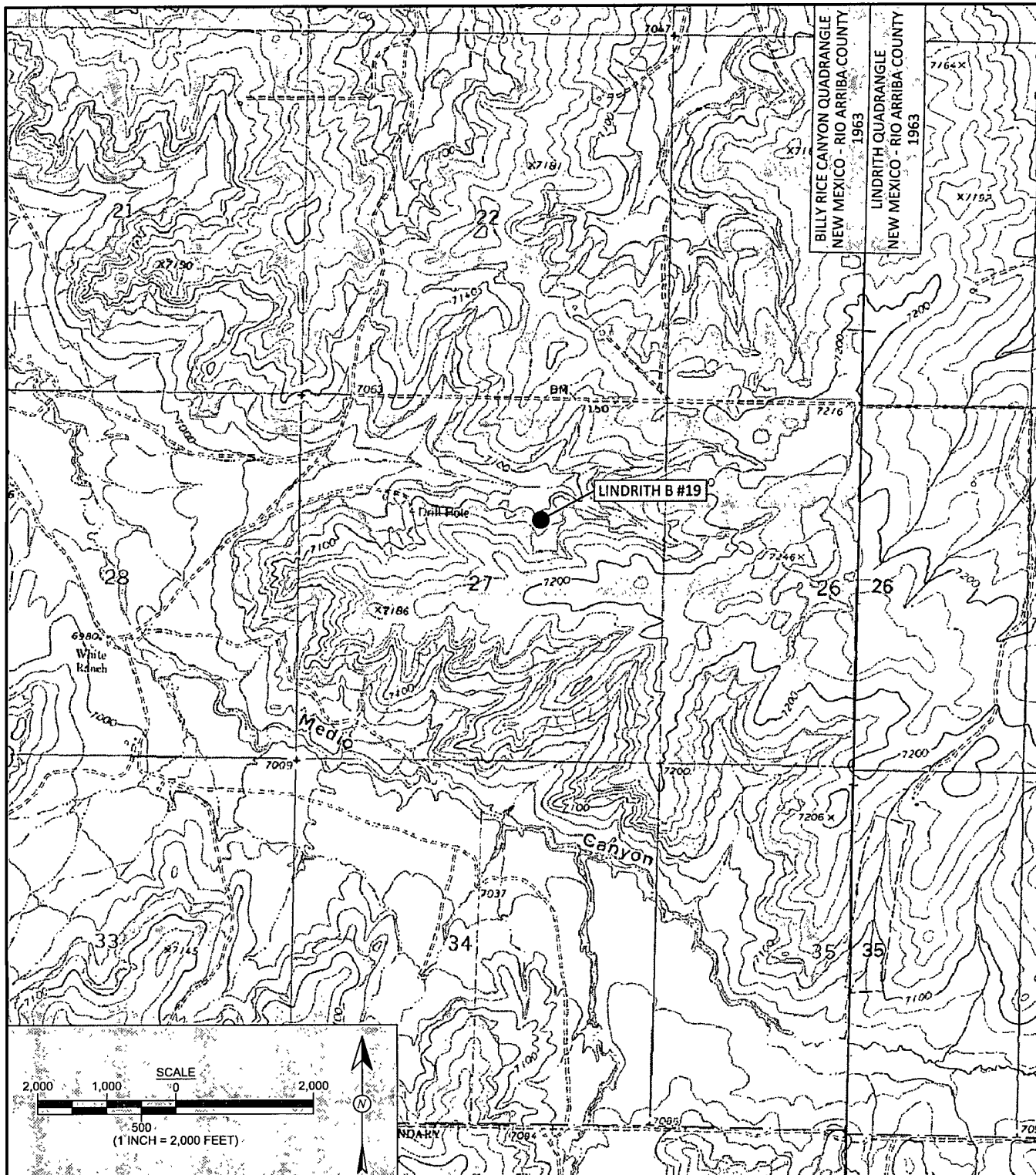


Elizabeth McNally, PE

Attachments:

- Figure 1. Topographic Site Location Map
- Figure 2. Aerial Site Map, April 2012
- Figure 3. Initial Sample Locations and Results, April 2012
- Figure 4. Final Excavation Soil Sample Locations and Results, May 2012
- AES Field Screening Report 042412
- AES Field Screening Report 052212

S:\Animas 2000\2012 Projects\Conoco Phillips\Lindrith B #19\Lindrith B #19 Release and Final Excavation Report 082012.docx



Animas Environmental Services, LLC

| | |
|------------------------------------|--|
| DRAWN BY: C. Lameman | DATE DRAWN: April 25, 2012 |
| REVISIONS BY: C. Lameman | DATE REVISED: April 25, 2012 |
| CHECKED BY: H. Woods | DATE CHECKED: June 26, 2012 |
| APPROVED BY: E. McNally | DATE APPROVED: August 20, 2012 |

FIGURE 1

TOPOGRAPHIC SITE LOCATION MAP
ConocoPhillips
Lindrith B #19
RIO ARriba COUNTY, NEW MEXICO
SW¼ NE¼, SECTION 27, T24N, R3W
N36.28377, W107.14071

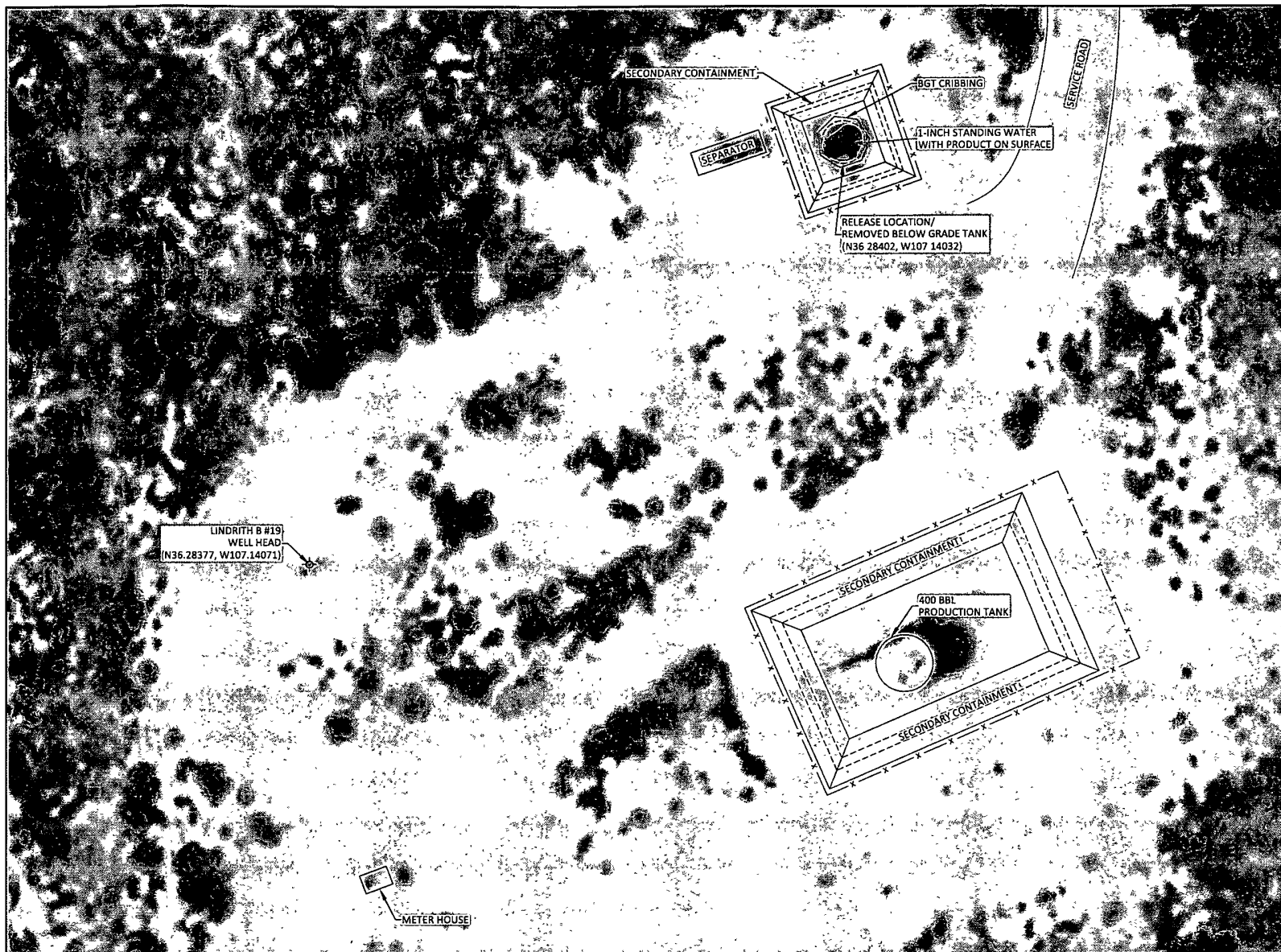


FIGURE 2

AERIAL SITE MAP
 ConocoPhillips
 Lindrith B #19
 RIO ARriba COUNTY, NEW MEXICO
 SW¼ NE¼, SECTION 27, T24N, R3W
 N36 28377, W107 14071



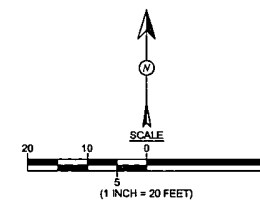
Animas Environmental Services, LLC

| | |
|-----------------------------------|--|
| DRAWN BY: C. Lameman | DATE DRAWN: April 25, 2012 |
| REVISIONS BY: N. Willis | DATE REVISED: August 2, 2012 |
| CHECKED BY: H. Woods | DATE CHECKED: June 26, 2012 |
| APPROVED BY: E. McNally | DATE APPROVED: August 20, 2012 |

LEGEND

— x — FENCE

AERIAL SOURCE: (c) 2012 MICROSOFT CORPORATION - AVAILABLE EXCLUSIVELY BY DIGITALGLOBE



| Field Screening Results | | | | |
|-------------------------|---------|------------|---------------|-------------------------|
| Sample ID | Date | Depth (ft) | OVM-PID (ppm) | Field TPH 418.1 (mg/kg) |
| NMOCD ACTION LEVEL | | | 100 | 1,000 |
| TH-1 | 4/24/12 | 0.5 | 3,575 | 10,000 |
| | | 2 | 3,905 | 7,430 |
| | | 4 | 1,986 | 555 |
| | | 6.5 | 506 | 232 |
| | | 8 | 38.1 | 159 |
| TH-2 | 4/24/12 | 9 | 42.9 | 97.9 |
| | | 0.5 | 4,023 | 9,060 |
| | | 4 | 3,721 | 8,020 |
| | | 6 | 1,656 | NA |
| | | 8 | 109 | 114 |
| TH-3 | 4/24/12 | 9 | 413 | 113 |
| | | 0.5 | 3,802 | 8,980 |
| | | 2 | 3,230 | NA |
| | | 4 | 959 | 1,040 |
| | | 6 | 3,413 | NA |
| TH-4 | 4/24/12 | 8 | 93.6 | 533 |
| | | 9 | 93.4 | 262 |
| | | 0.5 | 3,591 | 4,260 |
| | | 2 | 3,538 | NA |
| | | 4 | 3,629 | 5,690 |
| TH-5 | 4/24/12 | 6 | 3,570 | NA |
| | | 9 | 226 | 128 |
| | | 0.5 | 11.5 | NA |
| TH-6 | 4/24/12 | 4 | 195 | 68.8 |
| | | 0.5 | 13.5 | NA |
| TH-7 | 4/24/12 | 4 | 2,960 | 993 |
| | | 0.5 | 0.8 | NA |
| | | 4 | 1.2 | 60.8 |
| TH-8 | 4/24/12 | 7 | 1.0 | NA |
| | | 0.5 | 3.2 | NA |
| TH-9 | 4/24/12 | 4 | 4,034 | 2,210 |
| | | 3 | 1.2 | NA |
| TH-10 | 4/24/12 | 4 | 2.6 | NA |
| | | 8 | 4.1 | NA |
| TH-11 | 4/24/12 | 4 | 5.5 | NA |
| | | 7 | 2.9 | NA |

NA - NOT ANALYZED

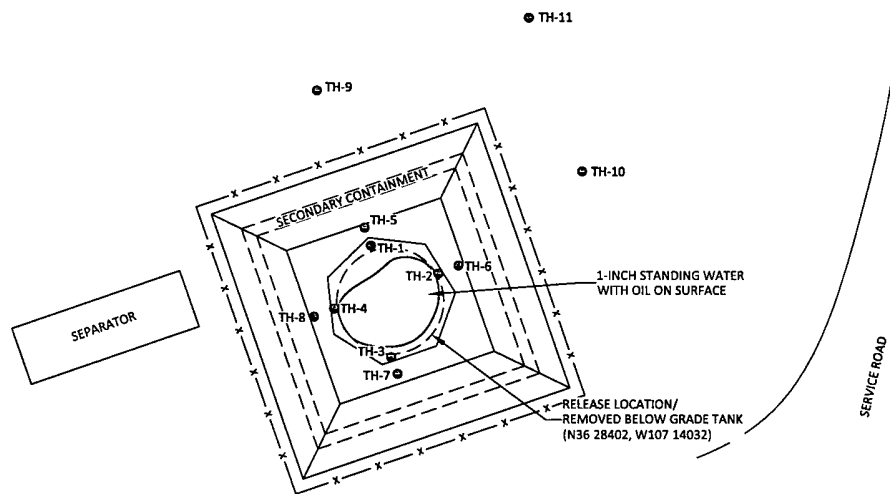


FIGURE 3

INITIAL SAMPLE LOCATIONS AND RESULTS, APRIL 2012
CONOCOPHILLIPS
 LINDRITH B #19
 RIO ARriba COUNTY, NEW MEXICO
 SW¼ NE¼, SECTION 27, T24N, R3W
 N36.28377, W107.14071

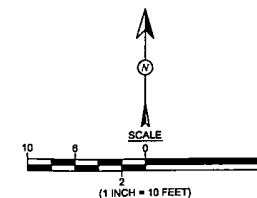


Animas Environmental Services, LLC

| | |
|-----------------------------------|--|
| DRAWN BY: C. Lameman | DATE DRAWN: April 25, 2012 |
| REVISIONS BY: N. Willis | DATE REVISED: August 2, 2012 |
| CHECKED BY: H. Woods | DATE CHECKED: June 26, 2012 |
| APPROVED BY: E. McNally | DATE APPROVED: August 20, 2012 |

LEGEND

- TEST HOLE LOCATION
- x — FENCE



| Field Screening Results | | | | |
|-------------------------|---------|------------|---------------|-------------------------|
| Sample ID | Date | Depth (ft) | OVM-PID (ppm) | Field TPH 418.1 (mg/kg) |
| NMOCD ACTION LEVEL | | | 100 | 1,000 |
| SC-1 | 5/22/12 | 1 to 12 | 5.0 | 46.4 |
| SC-2 | 5/22/12 | 12 | 6.7 | 45.1 |
| SC-3 | 5/22/12 | 1 to 12 | 6.6 | 74.7 |
| SC-4 | 5/22/12 | 1 to 12 | 6.1 | 157 |
| SC-5 | 5/22/12 | 1 to 12 | 5.1 | 111 |
| NA - NOT ANALYZED | | | | |

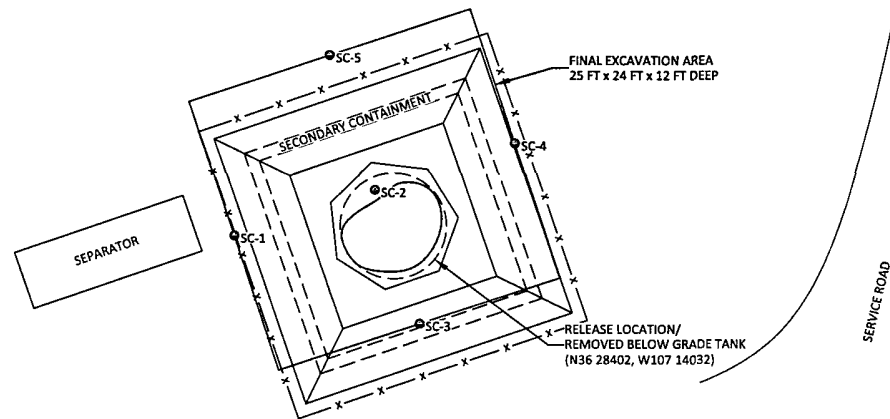


FIGURE 4

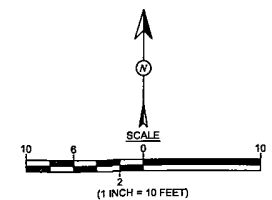
FINAL EXCAVATION SOIL SAMPLE LOCATIONS AND RESULTS, MAY 2012
 ConocoPhillips
 Lindrith B #19
 RIO ARRIABA COUNTY, NEW MEXICO
 SW¼ NE¼, SECTION 27, T24N, R3W
 N36 28377, W107 14071



Animas Environmental Services, LLC

| | |
|-----------------------------------|--|
| DRAWN BY: C. Lameman | DATE DRAWN: April 25, 2012 |
| REVISIONS BY: N. Willis | DATE REVISED: August 2, 2012 |
| CHECKED BY: D. Watson | DATE CHECKED: June 4, 2012 |
| APPROVED BY: E. McNally | DATE APPROVED: August 20, 2012 |

LEGEND
 ● 5-POINT COMPOSITE SAMPLE LOCATIONS
 — x — FENCE



AES Field Screening Report



Animas Environmental Services, LLC

www.animasenvironmental.com

Client: ConocoPhillips

Project Location: Lindrith B #19

Date: 4/24/2012

Matrix: Soil

624 E. Coimanche
Farmington, NM 87401
505-564-2281

Durango, Colorado
970-403-3274

| Sample ID | Collection Date | Collection Time | OVM (ppm) | Time of Sample Analysis | Field TPH* (mg/kg) | TPH PQL (mg/kg) | DF | TPH Analysts Initials |
|------------|-----------------|-----------------|-----------|-------------------------|--------------------|-----------------|----|-----------------------|
| TH-1@ 0.5' | 4/24/2012 | 13:08 | 3,575 | 14:44 | 10,000 | 200 | 10 | DAW |
| TH-1@ 2' | 4/24/2012 | 13:10 | 3,905 | 14:52 | 7,430 | 200 | 10 | DAW |
| TH-1@ 4' | 4/24/2012 | 13:15 | 1,986 | 14:57 | 555 | 20.0 | 1 | DAW |
| TH-1@ 6.5' | 4/24/2012 | 13:30 | 506 | 14:59 | 232 | 20.0 | 1 | DAW |
| TH-1@ 8' | 4/24/2012 | 13:44 | 38.1 | 15:02 | 159 | 20.0 | 1 | DAW |
| TH-1@9' | 4/24/2012 | 15:40 | 42.9 | 14:32 | 97.9 | 20.0 | 1 | DAW |
| TH-2@ 0.5' | 4/24/2012 | 14:05 | 4,023 | 16:19 | 9,060 | 200 | 10 | DAW |
| TH-2@ 4' | 4/24/2012 | 14:13 | 3,721 | 16:26 | 8,020 | 200 | 10 | DAW |
| TH-2@ 6' | 4/24/2012 | 14:23 | 1,656 | Not Analyzed for TPH | | | | |
| TH-2@ 8' | 4/24/2012 | 14:39 | 109 | 16:29 | 114 | 20.0 | 1 | DAW |
| TH-2@ 9' | 4/24/2012 | 16:29 | 413 | 18:36 | 113 | 20.0 | 1 | DAW |
| TH-3@ 0.5' | 4/24/2012 | 14:55 | 3,802 | 16:39 | 8,980 | 200 | 10 | DAW |
| TH-3@ 2' | 4/24/2012 | 15:00 | 3,230 | Not Analyzed for TPH | | | | |
| TH-3@ 4' | 4/24/2012 | 15:06 | 959 | 16:42 | 1,040 | 20.0 | 1 | DAW |
| TH-3@ 6' | 4/24/2012 | 15:21 | 3,413 | Not Analyzed for TPH | | | | |
| TH-3@ 8' | 4/24/2012 | 15:29 | 93.6 | 16:47 | 533 | 20.0 | 1 | DAW |
| TH-3@ 9' | 4/24/2012 | 16:33 | 93.4 | 18:30 | 262 | 20.0 | 1 | DAW |
| TH-4@ 0.5' | 4/24/2012 | 15:55 | 3,591 | 18:18 | 4,260 | 200 | 10 | DAW |
| TH-4@ 2' | 4/24/2012 | 16:03 | 3,538 | Not Analyzed for TPH | | | | |
| TH-4@ 4' | 4/24/2012 | 16:06 | 3,629 | 18:23 | 5,690 | 200 | 10 | DAW |
| TH-4@ 6' | 4/24/2012 | 16:17 | 3,570 | Not Analyzed for TPH | | | | |
| TH-4@ 9' | 4/24/2012 | 16:24 | 226 | 18:27 | 128 | 20.0 | 1 | DAW |

| Sample ID | Collection Date | Collection Time | OVM (ppm) | Time of Sample Analysis | Field TPH* (mg/kg) | TPH PQL (mg/kg) | DF | TPH Analysts Initials |
|------------|-----------------|-----------------|-----------|-------------------------|--------------------|-----------------|----|-----------------------|
| TH-5@ 0.5' | 4/24/2012 | 16:53 | 11.5 | Not Analyzed for TPH | | | | |
| TH-5@ 4' | 4/24/2012 | 17:01 | 195 | 18:40 | 68.8 | 20.0 | 1 | DAW |
| TH-6@ 0.5' | 4/24/2012 | 17:18 | 13.5 | Not Analyzed for TPH | | | | |
| TH-6@ 4' | 4/24/2012 | 17:24 | 2,960 | 18:43 | 993 | 20.0 | 1 | DAW |
| TH-7@ 0.5' | 4/24/2012 | 17:26 | 0.8 | Not Analyzed for TPH | | | | |
| TH-7@ 4' | 4/24/2012 | 17:33 | 1.2 | 18:48 | 60.8 | 20.0 | 1 | DAW |
| TH-7@ 7' | 4/24/2012 | 17:41 | 1.0 | Not Analyzed for TPH | | | | |
| TH-8@ 0.5' | 4/24/2012 | 17:55 | 3.2 | Not Analyzed for TPH | | | | |
| TH-8@ 4' | 4/24/2012 | 18:01 | 4,034 | 18:52 | 2,210 | 20.0 | 1 | DAW |
| TH-9@ 3' | 4/24/2012 | 18:20 | 1.2 | Not Analyzed for TPH | | | | |
| TH-10@ 4' | 4/24/2012 | 18:30 | 2.6 | Not Analyzed for TPH | | | | |
| TH-10@ 8' | 4/24/2012 | 18:43 | 4.1 | Not Analyzed for TPH | | | | |
| TH-11@ 4' | 4/24/2012 | 19:11 | 5.5 | Not Analyzed for TPH | | | | |
| TH-11@ 7' | 4/24/2012 | 19:21 | 2.9 | Not Analyzed for TPH | | | | |

Total Petroleum Hydrocarbons - USEPA 418.1

*Field TPH concentrations recorded may be below PQL.

PQL

Practical Quantitation Limit

ND

Not Detected at the Reporting Limit

DF

Dilution Factor

Analyst:

Debrah Wata

AES Field Screening Report



Animas Environmental Services, LLC

www.animasenvironmental.com

624 E. Comanche
Farmington, NM 87401
505-564-2281

Durango, Colorado
970-403-3274

Client: ConocoPhillips

Project Location: Lindrith B #19

Date: 5/22/2012

Matrix: Soil

| Sample ID <i>South BGT</i> | Collection Date | Time of Sample Collection | Sample Location | OVM (ppm) | Field TPH Analysis Time | Field TPH* (mg/kg) | TPH PQL (mg/kg) | DF | TPH Analysts Initials |
|-------------------------------|--------------------|---------------------------------|--------------------|--------------|-------------------------------|-----------------------|--------------------|----|--------------------------|
| SC-1 | 5/22/2012 | 11:34 | West | 5.0 | 12:18 | 46.4 | 20.0 | 1 | DAW |
| SC-2 | 5/22/2012 | 11:36 | Base | 6.7 | 12:21 | 45.1 | 20.0 | 1 | DAW |
| SC-3 | 5/22/2012 | 11:38 | South | 6.6 | 12:25 | 74.7 | 20.0 | 1 | DAW |
| SC-4 | 5/22/2012 | 11:40 | East | 6.1 | 12:28 | 157 | 20.0 | 1 | DAW |
| SC-5 | 5/22/2012 | 11:42 | North | 5.1 | 12:33 | 111 | 20.0 | 1 | DAW |

PQL Practical Quantitation Limit

ND Not Detected at the Reporting Limit

DF Dilution Factor

**Field TPH concentrations recorded may be below PQL.*

Total Petroleum Hydrocarbons - USEPA 418.1

Analyst: