

Submit 3 Copies To Appropriate District Office
District I
1625 N. French Dr., Hobbs, NM 88240
District II
1301 W. Grand Ave., Artesia, NM 88210
District III
1000 Rio Brazos Rd., Aztec, NM 87410
District IV
1220 S. St. Francis Dr., Santa Fe, NM 87505

State of New Mexico
Energy, Minerals and Natural Resources

Form C-103
May 27, 2004

OIL CONSERVATION DIVISION
1220 South St. Francis Dr.
Santa Fe, NM 87505

| |
|--|
| WELL API NO. 30-045-22993 |
| 5. Indicate Type of Lease STATE <input type="checkbox"/> FEE <input type="checkbox"/> |
| 6. State Oil & Gas Lease No. |

SUNDRY NOTICES AND REPORTS ON WELLS
(DO NOT USE THIS FORM FOR PROPOSALS TO DRILL OR TO DEEPEN OR PLUG BACK TO A DIFFERENT RESERVOIR. USE "APPLICATION FOR PERMIT" (FORM C-101) FOR SUCH PROPOSALS.)

1. Type of Well: Oil Well ☒ Gas Well ☐ Other ☐

2. Name of Operator
BP America Production Company - Attn: Mary Corley

3. Address of Operator
P.O. Box 3092 Houston, TX 77253

4. Well Location
Unit Letter **P** : **860** feet from the **South** line and **870** feet from the **East** line
Section **28** Township **31N** Range **10W** NMPM **San Juan** County

11. Elevation (Show whether DR, RKB, RT, GR, etc.)
6165' GR

Pit or Below-grade Tank Application ☐ or Closure ☐

Pit type **Workover** Depth to Groundwater **>100'** Distance from nearest fresh water well **>1000'** Distance from nearest surface water **>1000'**

Pit Liner Thickness: **12** mil Below-Grade Tank: Volume _____ bbls; Construction Material _____

12. Check Appropriate Box to Indicate Nature of Notice, Report or Other Data

NOTICE OF INTENTION TO:

PERFORM REMEDIAL WORK ☐ PLUG AND ABANDON ☐
TEMPORARILY ABANDON ☐ CHANGE PLANS ☐
PULL OR ALTER CASING ☐ MULTIPLE COMPL ☐

OTHER: **Complete into PC & DHC w/Mesaverde**

SUBSEQUENT REPORT OF:

REMEDIAL WORK ☐ ALTERING CASING ☐
COMMENCE DRILLING OPNS. ☐ P AND A ☐
CASING/CEMENT JOB ☐

OTHER: ☐

13. Describe proposed or completed operations. (Clearly state all pertinent details, and give pertinent dates, including estimated date of starting any proposed work). SEE RULE 1103. For Multiple Completions: Attach wellbore diagram of proposed completion or recompletion.

BP America Production Company request permission to complete the subject well into the Blanco Pictured Cliffs Pool and commingle production Downhole with the existing Blanco Mesaverde as per the attached procedure. The Blanco Mesaverde (72319) and Blanco Pictured Cliffs (72359) Pools are Pre-Approved Pools for Downhole Commingling per NMOCD order R-11363. The working and overriding royalty interest owners in the proposed commingled pools are identical, therefore no additional notification is required. BLM has been notified via FORM 3160-5.

Production is proposed to be allocated based on the subtraction method using the projected future decline for production from the Mesaverde. That production shall serve as a base for production subtracted from the total production for the commingled well. The balance of the production will be attributed to the Pictured Cliffs. Attached is the future production decline estimates for the Mesaverde.

Commingling Production Downhole in the subject well from the proposed Pools with not reduce the value of the total remaining production

Construct a lined workover pit per BP America - San Juan Basin Drilling/ Workover Pit Construction Plan issued date of 11/17/2004. Pit will be closed according to closure plan on file.

I hereby certify that the information above is true and complete to the best of my knowledge and belief. I further certify that any pit or below-grade tank has been/will be constructed or closed according to NMOCD guidelines ☐, a general permit ☐ or an (attached) alternative OCD-approved plan ☐.

SIGNATURE Mary Corley TITLE Sr. Regulatory Analyst DATE 04/15/2005
Type or print name Mary Corley E-mail address: corleyml@bp.com Telephone No. 281-366-4491

For State Use Only

APPROVED BY: [Signature] TITLE _____ DATE APR 20 2005
Conditions of Approval (if any): _____

District I

1625 N. French Dr., Hobbs, NM 88240

District II

811 South First, Artesia, NM 88210

District III

1000 Rio Brazos Rd., Aztec, NM 87410

District IV

2040 South Pacheco, Santa Fe, NM 87505

State of New Mexico
Energy, Minerals & Natural Resources Department**OIL CONSERVATION DIVISION**
2040 South Pacheco
Santa Fe, NM 87505Form C-102
Revised August 15, 2000Submit to Appropriate District Office
State Lease - 4 Copies
Fee Lease - 3 Copies

AMENDED REPORT

WELL LOCATION AND ACREAGE DEDICATION PLAT

| | | |
|--|--|---|
| ¹ API Number 30-045-22993 | ² Pool Code 72359 | ³ Pool Name Blanco Pictured Cliffs |
| ⁴ Property Code 000277 | ⁵ Property Name Atlantic A LS | ⁶ Well Number 2A |
| ⁷ OGRID No. 000778 | ⁸ Operator Name BP America Production Company | ⁹ Elevation 6165' GR |

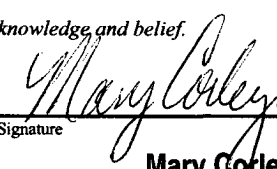
¹⁰ Surface Location

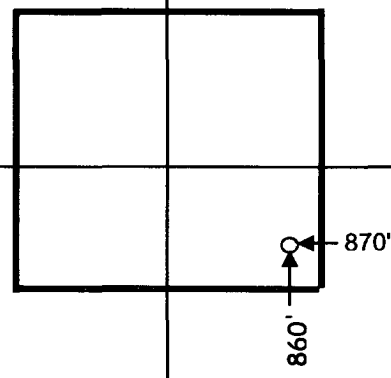
| | | | | | | | | | |
|---------------------------|----------------------|------------------------|---------------------|---------|-------------------------|-----------------------------|-------------------------|--------------------------|---------------------------|
| UL or lot no. P | Section 28 | Township 31N | Range 10W | Lot Idn | Feet from 860 | North/South South | Feet from 870 | East/West East | County San Juan |
|---------------------------|----------------------|------------------------|---------------------|---------|-------------------------|-----------------------------|-------------------------|--------------------------|---------------------------|

¹¹ Bottom Hole Location If Different From Surface

| | | | | | | | | | |
|---|-------------------------------|----------------------------------|-------------------------|---------|-----------|-------------|------|-----------|--------|
| UL or lot no. | Section | Township | Range | Lot Idn | Feet from | North/South | Feet | East/West | County |
| ¹² Dedicated Acres 160 | ¹³ Joint or Infill | ¹⁴ Consolidation Code | ¹⁵ Order No. | | | | | | |

NO ALLOWABLE WILL BE ASSIGNED TO THIS COMPLETION UNTIL ALL INTERESTS HAVE BEEN CONSOLIDATED OR A
NON-STANDARD UNIT HAS BEEN APPROVED BY THE DIVISION

| | | | | |
|--|--|--|--|---|
| | | | | ¹⁷ OPERATOR CERTIFICATION I hereby certify that the information contained herein is true and complete to the best of my knowledge and belief.  Signature Mary Corley Printed Name Sr. Regulatory Analyst Title 4/13/2005 Date |
| | | | | ¹⁸ SURVEYOR CERTIFICATION I hereby certify that the well location shown on this plat was plotted from field notes of actual surveys made by me or under my supervision, and that the same is true and correct to the best of my belief. 1/3/1974 Date of Survey Signature and Seal of Professional Surveyor: 1760 Certificate Number |
| | | | | |
| | | | | |



Atlantic A LS 2A
Procedure to Complete into the Pictured Cliffs & DHC with the Mesaverde
March 29, 2005

1. Perform pre-rig site inspection. Check for: size of location, Gas Taps, other wells, other operators, running equipment, wetlands, wash (dikes req.), H₂S, barriers needed for equipment, Landowner issues, location of pits (buried lines in pits), Raptor nesting, critical location, check anchors. Check ID wellhead, if earth pit is required have One Call made 48 hours prior to digging.
2. Perform second site visit after lines are marked to ensure all lines clear marked pit locations. Planning and Scheduling to ready location for rig.
3. RU slickline unit or wireline unit. Pressure test lubricator and equipment. RIH and set **two** barriers (CIBP, tbg collar stop w/plug, or plug set in nipple) for isolation in tubing string.
4. Check and record tubing, casing, and bradenhead pressures. Ensure production casing has double casing valves installed. Double valve all casing strings.
5. MIRU workover rig. LO/TO all necessary equipment including but not limited to: meter run, Automation, Separators and water lines.
6. Blow down well. Kill with 2% KCL water ONLY if necessary.
7. Check all casing strings to ensure no pressure exist on any annulus. **The operations of removal of wellhead and installation of BOP's will be performed under a dispensation for one (1) barrier on the backside.**
8. Nipple down Wellhead. NU BOPs and diversion spool with 3" outlets and 3" pipe to the blow tank. Pressure test BOPs to 200 psi above BHP. Monitor flowing casing pressure with gauge (with casing flowing to blow tank) throughout workover.
9. Install stripping rubber, pull tubing hanger up above pipe rams, and shut pipe rams. Remove stripping rubber. Strip tubing hanger out of hole. Re-install stripping rubber.
10. TOH and LD 2-3/8" production tubing currently set at 5507'. Using approved "Under Balance Well Control Tripping Procedure".
11. TIH w/ scraper for 7". Check the distance between the top of the blind rams and the length of the bottom hole assembly that is being run. If the BHA is too long then the well has to be top killed and monitored prior to opening blind rams. RIH to liner top at 3,073'. POOH.
12. Set bridge plug at 3,000'. Fill casing w/ 2%KCl and test to 2,500 psi w/ rig pumps.
13. RU E-line equipment. Pressure test lubricator and equipment. Log well w/ CBL from PBTD to 2,000'. If TOC is below PC, contact engineer to discuss need for remedial cement squeeze.
14. TIH w/ workstring and blow well dry.
15. Prepare for explosive operations. Follow Schlumberger Explosive SOP including radio silence, suspension of welding operations, and isolation of electrical devices from the work area. Perform Pre-job Safety Meeting to review JSA and procedures.

16. RIH with 3-1/8" casing guns w/lubricator. Perforate Pictured Cliffs formation w/ 4 SPF.
17. NU Frac isolation equipment. Install and monitor production casing and treating pressure during entire job in frac van via pressure transducers on production casing and treating line. Spearhead 500 gal 15% HCL, establish injection rate, and proceed with fracture stimulation according to Schlumberger schedule. Maintain surface pressures less than 3,000 psi during frac job. Flush frac with foam. Fill out GWSI scorecard.
18. Flowback frac immediately. Flow well through choke manifold on 1/4", 1/2" and 3/4" chokes increasing drawdown until well dies or stabilizes. This is to aid in reducing sand flowback. Recommend 8 hours of flow for each choke size.
19. Rig up air package/unit, pressure test all lines (Testing procedure to be supplied from air company), TIH with tubing and bit for 7" casing. Cleanout fill to top of BP set at 3,000'. **Perform well test on Pictured Cliffs for regulatory and document well test in DIMS.**
20. Cleanout fill, and BP set at 3,000'. Cleanout to PBTD at 5,542'. Blow well dry.
21. Rabbit tubing and RIH with 2-3/8" production tubing (with muleshoe, F-nipple with plug, 4 ft pup, X-nipple with plug).
22. Land 2-3/8" production tubing at +/-5,450'. Lock down hanger.
23. Pressure test tubing to 500 psi with air unit, make sure tubing spool valves are open. Care should be taken during pressure testing of the tubing due to potential problem caused if tubing parts close to surface or above the hanger. Check all casing string for pressure. **The operations of removal of wellhead and installation of BOP's will be performed under a dispensation for one (1) barrier on the backside.**
24. ND BOP's. NU Wellhead. During Master valve placement ensure the top of hanger has spacer nipple in place to bottom of bonnet flange so plunger equipment will not hang up through tree. Pressure test Wellhead.
25. RU WL unit. Run gauge ring for 2-3/8" tubing. Pull plugs and set tubing stop for plunger. Communicate plunger equipment status to IC room personnel.
26. RD slickline unit.
27. Test well for air. Return well to production and downhole co-mingle Pictured Cliffs and Mesaverde.

Atlantic A LS 2 A

Sec 28, T31N, R10W

API # 30-045-22993

GL: 6165'

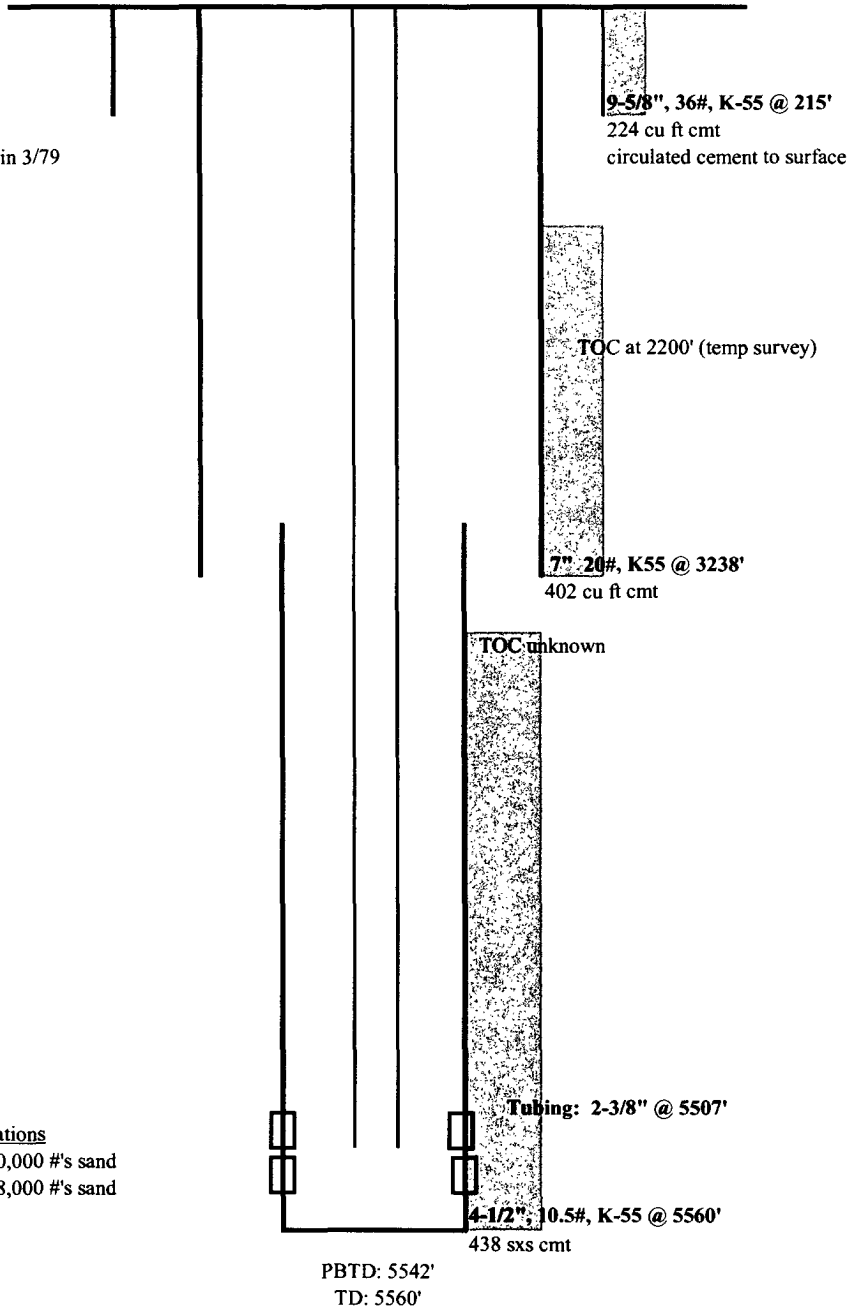
History:

Completed in MV in 3/79

Mesaverde Perforations

4410' - 5008' w/ 90,000 #'s sand

5070' - 5505' w/ 88,000 #'s sand



updated: 9/29/04 CFR