

UNITED STATES
DEPARTMENT OF THE INTERIOR
BUREAU OF LAND MANAGEMENT

SUNDRY NOTICES AND REPORTS ON WELLS

Do not use this form for proposals to drill or to deepen or reentry to a different reservoir.
Use "APPLICATION FOR PERMIT---" for such proposals

SUBMIT IN TRIPLICATE

1. Type of Well

☐ Oil ☒ Gas ☐ Other

2. Name of Operator

Roddy Production Company, Inc.

3. Address and Telephone No.

P.O. Box 2221, Farmington NM 87499 (505) 325-5750

4. Location of Well (Footage, Sec., T., R., M., or Survey Description)

Surface location; 1570' FSL x 1800' FWL, Section 20, T27N, R11W

FORM APPROVED
Budget Bureau No. 1004-0135
Expires: March 31, 1993

5. Lease Designation and Serial No.
NM020496

6. If Indian, Allottee or Tribe Name
N/A

7. If Unit or CA, Agreement Designation

8. Well Name and No.

Yockey 4R

9. API Well No.

30-045-29671

10. Field and Pool, or Exploratory Area

W. Kutz Pictured Cliffs/Fruitland Coal

11. County or Parish, State

San Juan County, New Mexico

12. CHECK APPROPRIATE BOX(s) TO INDICATE NATURE OF NOTICE, REPORT, OR OTHER DATA

TYPE OF SUBMISSION

☐ Notice of Intent

☒ Subsequent Report

☐ Final Abandonment Notice

TYPE OF ACTION

☐ Abandonment

☒ Recompletion

☐ Plugging Back

☐ Casing Repair

☐ Altering Casing

☐ Other Pay Add

☐ Change of Plans

☐ New Construction

☐ Non-Routine Fracturing

☐ Water Shut-Off

☐ Conversion to Injection

☐ Dispose Water

(Note: Report results of multiple completion on Well Completion or Recompletion Report and Log form.)

13. Describe Proposed or Completed Operations (Clearly state all pertinent details, and give pertinent dates, including estimated date of starting any proposed work. If well is directionally drilled, give subsurface locations and measured and true vertical depth for all markers and zones pertinent to this work.)*

Roddy Production has re-completed the above mentioned well in the Fruitland Coal. After clean (de-watered) production rates are established from the Fruitland Coal, co-mingled production will be established with the existing Pictured Cliffs zone. Production allocation will be accomplished by subtracting the historical decline curve production figure of the Pictured Cliffs zone from the total combined production figure. The re-completion reports and well bore diagram are attached.

ACCEPTED FOR RECORD

14. I hereby certify that the foregoing is true and correct

Signed
Robert R. Griffie

Title Operations Manager
agent for Roddy Production

FARMINGTON FIELD OFFICE

BY

Date: 3/23/05

(This space for Federal or State office use)

Approved by

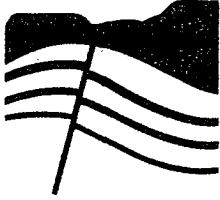
Title

Date

Conditions of approval, if any:

Title 18 U.S.C. Section 1001, makes it a crime for any person knowingly and willfully to make to any department or agency of the United States any false, fictitious or fraudulent statements or representations as to any matter within its jurisdiction.

*See Instruction on Reverse Side



DJ SIMMONS, INC.

1009 Ridgeway Place
Suite 200
Farmington,
New Mexico 87401

505-326-3753
505-327-4659 FAX
info@djssimmonsinc.com
www.djssimmonsinc.com

Yockey 4-R
Roody Production Co., Inc.

Supervisor:
Sean Duff

3/4/05

MIRU PWS rig #2. Set in all equipment. SDFN.

3/07/05

Travel to location. ND wellhead, NU BOPE. Load and test tbg to 750 psi. test good. TOH w 2 3/8" tbg SLM. %& jts landed @ 1,837' w/ 12' KB. MU bit and scraper TIH tag @ 1,920'. TOH LD tools. SDFN.

3/08/05

Travel to location. SICP 50 psi. RU Blue jet RIH set composite plug @ 1,790', POOH. TIH to 1,784', pressure test to 2,000 psi. Spot 7.5 HCL TOH RU wireline perforate @, 1,786'-1,770', 1,768', 1,752'-1,744', 1,739', 1,716' -1,713', 1,695', 1,640', 1,635'-1,632', 1,619', 1,577'-1,574', and 1,535'. POOH RD wireline. TIH swab back 20 bbls. TOH SDFN.

3/9/05

Travel to location. RU Stinger wellhead protection. Stand by for sand, Rig up Schlumberger frac equipment. Bull head 1500 gals 15% HCL ahead of frac. Frac well with 120,000 # sand in 65Q N2 foam. Average rate, 55 bpm at 1900 psi, maximum sand concentration, 3.5 ppg. ISIP 1,100 psi. Rig down Schlumberger. At 4pm well had 800 psi. Open well on 1/8" choke, 6pm 350 psi., 8pm 150 psi., 10 pm 60 psi. Secure well SDFN.

3/10/05

Travel to location. SICP 150 psi. Open well on 1/8" choke, blow well down to 20 psi., x-over to 1/2" choke, after 1/2 hr well was not blowing. TIH tag sand @ 1,766', clean out to composite plug with air and foam. Recovered 60 bbls water and lite sand. Dry well up. SDFN.

3/12/05

TIH tag 5' fill clean out with air and mist. Alternate air volume and mist. Slight sand returns only. TOH 6 stds, flow well natural for 3 hrs. Noticed some gas show. SDFN.

3/14/05

Travel to location, SICP 75 psi, SITP 75 psi. TIH tag 4' fill. Clean out with air, mist, sweeps at different volumes, dry up well. TOH above perf and natural flow 2 hr, well did not flow. Pressure up to 300 psi and surge well. Well return 10 gals of water and cup of sand all day. TOH flow well to tank. Secure well. SDFN.

3/15/05

Travel to location. Well was shut in at 10:00 p.m. 3/14/05. SICP 70 psi, bleed well down. TIH tag 2.5' of fill, clean out with air, mist, sweeps, alternating volumes. Well did not return frac fluid, made a cup of frac sand. Dry up well, TOH, TIH 1 jt, SN, 53 jts land at 1,740' with 13' KB. RD unit and equipment. Secure well, SDFN. Will move to Raymond Simmons 1 tomorrow.

Elevations: 6206' RKB

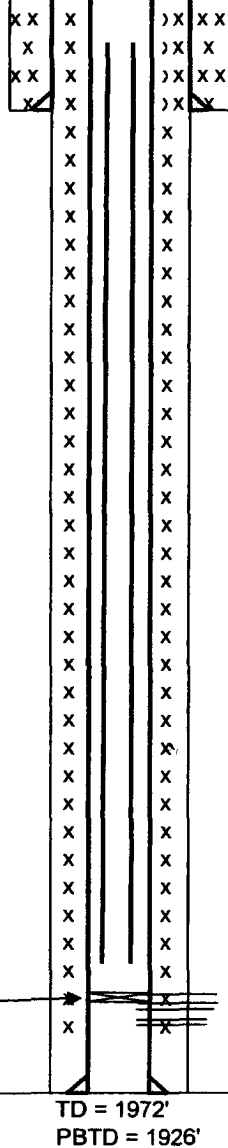
0

500

1000

1500

Composite
bridge plug at
1790'
to be removed
later



8 5/8", 24 ppf, J55 Surface casing set at 220'
cemented to surface with 220 sks Class 'G'
12 1/4" hole diameter

Yockey 4R

Surface Location: 1570' FSL x 1800' FWL
Section 20, T27N, R11W
San Juan County, NM
API # 30-045-29671

well bore diagram by:
R. Griffiee 3/23/05

Well Bore Schematic

Spud Date: 11/16/98
Completion Date: 12/01/98
maximum deviation - 1 1/4 degrees

7 7/8" hole diameter

2 3/8", 4.7 ppf, J55 EUE tubing landed at 1740'

2005 Pay add

Fruitland Coal perms: 1786' - 1770', 1768', 1752' - 1744', 1739',
1716' - 1713', 1695', 1640', 1635' - 1632', 1619', 1577' - 1574',
and 1535' (4 jspf).

Frac'd with 120,000 lbs 16/30 Brady sand in 65Q N2 foam

Pictured Cliffs perms: 1795' - 1798', 1808' - 1814', 1817' - 1830',
and 1837' - 1850' (156 perforations)

Frac'd with 66,475 gals 70 Q N2 foam and 138,200 lbs
12/20 Brady sand.

4 1/2", 10.5 ppf, J55 Production Casing set at 1972'
Cemented to surface with 260 sks 12.6 ppg Class 'G' and
100 sks 15.6 ppg Class 'G'