

UNITED STATES
DEPARTMENT OF THE INTERIOR
BUREAU OF LAND MANAGEMENT

FORM APPROVED
OMB No. 1004-0136
Expires November 30, 2000

APPLICATION FOR PERMIT TO DRILL OR REENTER

| | | |
|---|---|---|
| 1a. Type of Work: <input checked="" type="checkbox"/> DRILL <input type="checkbox"/> REENTER | | 5. Lease Serial No. NMSF 078886 |
| 1b. Type of Well: <input type="checkbox"/> Oil Well <input checked="" type="checkbox"/> Gas Well <input type="checkbox"/> Other <input type="checkbox"/> Single Zone <input checked="" type="checkbox"/> Multiple Zone | | 6. If Indian, Allottee or Tribe Name |
| 2. Name of Operator HUNTINGTON ENERGY, L.L.C. | | 7. If Unit or CA Agreement, Name and No. CANYON LARGO UNIT |
| Contact: CATHY SMITH E-Mail: CSMITH@HUNTINGTONENERGY.COM | | 8. Lease Name and Well No. CANYON LARGO UNIT 466 |
| 3a. Address 6301 WATERFORD BLVD., SUITE 400 OKLAHOMA CITY, OK 73118 | 3b. Phone No. (include area code) Ph: 405.840.9876 Fx: 405-840-2011 | 9. API Well No. 3003929379 |
| 4. Location of Well (Report location clearly and in accordance with any State requirements.)* At surface NWSW Lot L 2010FSL 900FWL 36.29619 N Lat, 107.47917 W Lon At proposed prod. zone NWSW Lot L 2010FSL 900FWL 36.29619 N Lat, 107.47917 W Lon | | 10. Field and Pool, or Exploratory BASIN DAKOTA |
| 14. Distance in miles and direction from nearest town or post office* 35 MILES SE OF BLANCO, NM | | 11. Sec., T., R., M., or Blk. and Survey or Area L Sec 21 T24N R6W Mer NMP |
| 15. Distance from proposed location to nearest property or lease line, ft. (Also to nearest drig. unit line, if any) | 16. No. of Acres in Lease 2410.50 | 12. County or Parish RIO ARRIBA ✓ |
| 18. Distance from proposed location to nearest well, drilling, completed, applied for, on this lease, ft. | 19. Proposed Depth 7200 MD | 13. State NM |
| 21. Elevations (Show whether DF, KB, RT, GL, etc.) 6952 GL | 22. Approximate date work will start | 17. Spacing Unit dedicated to this well 320.00 W/2 |
| 24. Attachments | | 20. BLM/BIA Bond No. on file NMB000076 |
| | | 23. Estimated duration |

The following, completed in accordance with the requirements of Onshore Oil and Gas Order No. 1, shall be attached to this form:

- | | |
|---|--|
| 1. Well plat certified by a registered surveyor. | 4. Bond to cover the operations unless covered by an existing bond on file (see Item 20 above). |
| 2. A Drilling Plan. | 5. Operator certification |
| 3. A Surface Use Plan (if the location is on National Forest System Lands, the SUPO shall be filed with the appropriate Forest Service Office). | 6. Such other site specific information and/or plans as may be required by the authorized officer. |

| | | |
|---|--|--------------------|
| 25. Signature (Electronic Submission) | Name (Printed/Typed) CATHY SMITH Ph: 405.840.9876 | Date 12/02/2004 |
| Title GENERAL CONTACT | | |
| Approved by (Signature) <i>[Signature]</i> | Name (Printed/Typed) | Date 1-28-05 |
| Title AFM | Office PFO | |

Application approval does not warrant or certify the applicant holds legal or equitable title to those rights in the subject lease which would entitle the applicant to conduct operations thereon.

Conditions of approval, if any, are attached.

Title 18 U.S.C. Section 1001 and Title 43 U.S.C. Section 1212, make it a crime for any person knowingly and willfully to make to any department or agency of the United States any false, fictitious or fraudulent statements or representations as to any matter within its jurisdiction.

Electronic Submission #51479 verified by the BLM Well Information System
For HUNTINGTON ENERGY, L.L.C., sent to the Farmington

DRILLING OPERATIONS AUTHORIZED ARE
SUBJECT TO COMPLIANCE WITH ATTACHED
"GENERAL REQUIREMENTS".

This action is subject to technical and
procedural review pursuant to 43 CFR 3165.3
and appeal pursuant to 43 CFR 3165.4

** OPERATOR-SUBMITTED ** OPERATOR-SUBMITTED ** OPERATOR-SUBMITTED **

NMOC

DISTRICT I
1825 N. French Dr., Hobbs, N.M. 88240

DISTRICT II
1301 W. Grand Ave., Artesia, N.M. 88210

DISTRICT III
1000 Rio Brazos Rd., Aztec, N.M. 87410

DISTRICT IV
1220 South St. Francis Dr., Santa Fe, NM 87505

State of New Mexico

Energy, Minerals & Natural Resources Department

OIL CONSERVATION DIVISION

1220 South St. Francis Dr.
Santa Fe, NM 87505

Form C-11

Revised June 10, 20

Submit to Appropriate District Office

State Lease - 4 Copies

Fee Lease - 3 Copies

☐ AMENDED REPORT

WELL LOCATION AND ACREAGE DEDICATION PLAT

| | | |
|------------------------------|---|----------------------------|
| *API Number 30-039-29319 | *Pool Code 71599 | *Pool Name Basin Dakota |
| *Property Code 6886 32660 | *Property Name CANYON LARGO UNIT | *Well Number 466 |
| *OGRD No. 208706 | *Operator Name HUNTINGTON ENERGY, L.L.C. | *Elevation 6952' |

10 Surface Location

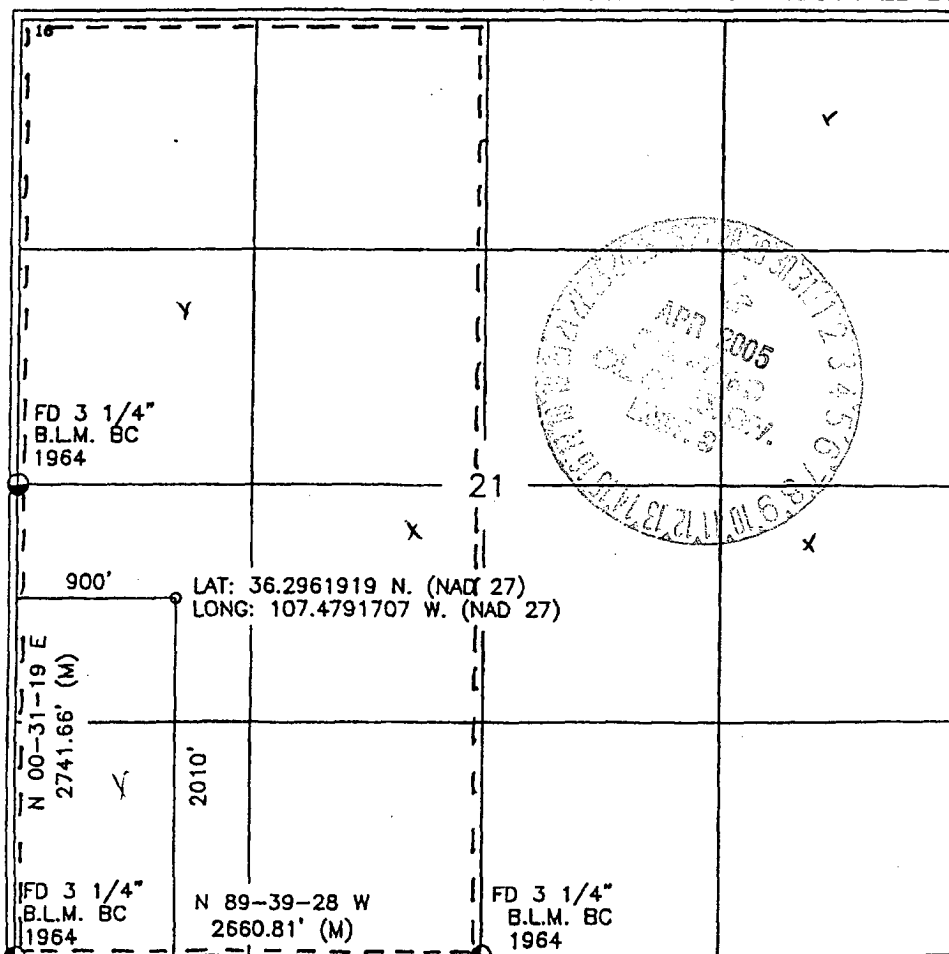
| UL or lot no. | Section | Township | Range | Lot Idn | Feet from the | North/South line | Feet from the | East/West line | County |
|---------------|---------|----------|-------|---------|---------------|------------------|---------------|----------------|------------|
| L | 21 | 24-N | 6-W | | 2010 | SOUTH | 900 | WEST | RIO ARriba |

11 Bottom Hole Location If Different From Surface

| UL or lot no. | Section | Township | Range | Lot Idn | Feet from the | North/South line | Feet from the | East/West line | County |
|---------------|---------|----------|-------|---------|---------------|------------------|---------------|----------------|--------|
| | | | | | | | | | |

| | | | |
|------------------------------|------------------|---------------------|------------|
| *Dedicated Acres DK-W/320 | *Joint or Infill | *Consolidation Code | *Order No. |
|------------------------------|------------------|---------------------|------------|

NO ALLOWABLE WILL BE ASSIGNED TO THIS COMPLETION UNTIL ALL INTERESTS HAVE BEEN CONSOLIDATED OR A NON-STANDARD UNIT HAS BEEN APPROVED BY THE DIVISION



17 OPERATOR CERTIFICATION

I hereby certify that the information contained herein is true and complete to the best of my knowledge and belief.

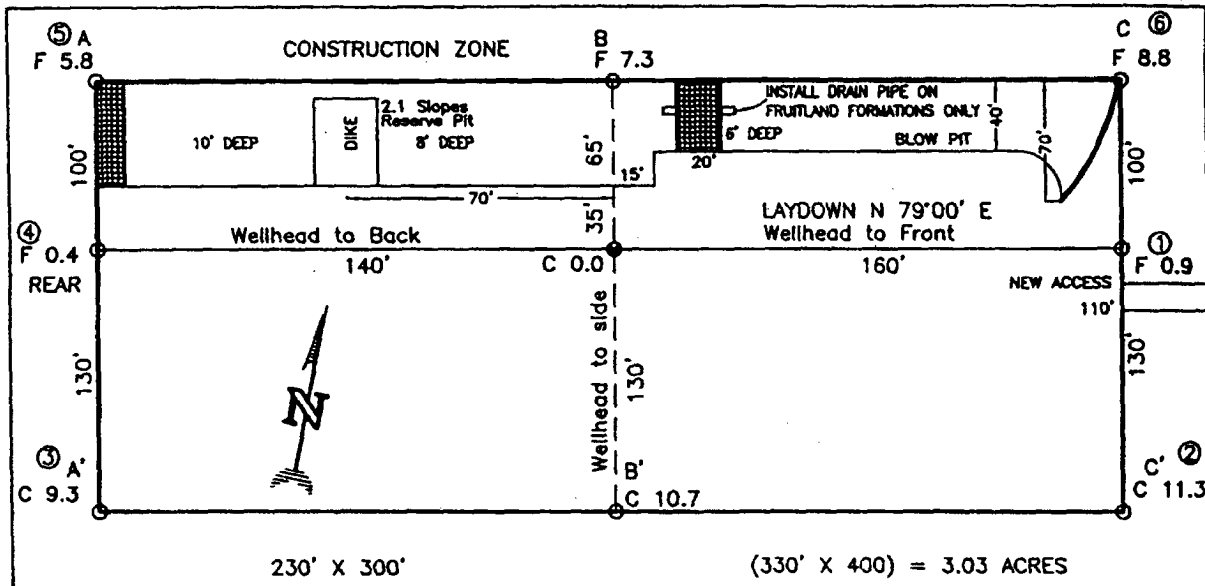
Catherine Smith
Signature
Catherine Smith
Printed Name
Land Associate
Title
9/9/04
Date

18 SURVEYOR CERTIFICATION

I hereby certify that the well location shown on this plat was plotted from field notes of actual surveys made by me or under my supervision, and that the same is true and correct to the best of my belief.

AUG 11 2004
Date of Survey
Signature of Professional Surveyor
14831
REGISTERED PROFESSIONAL SURVEYOR
Certificate Number

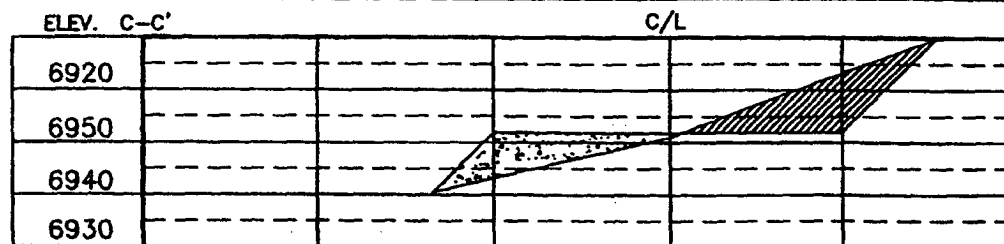
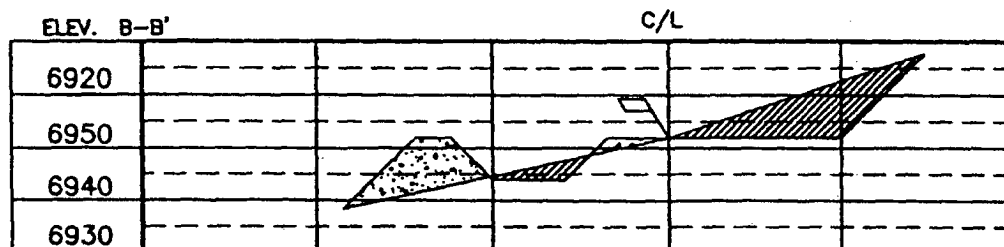
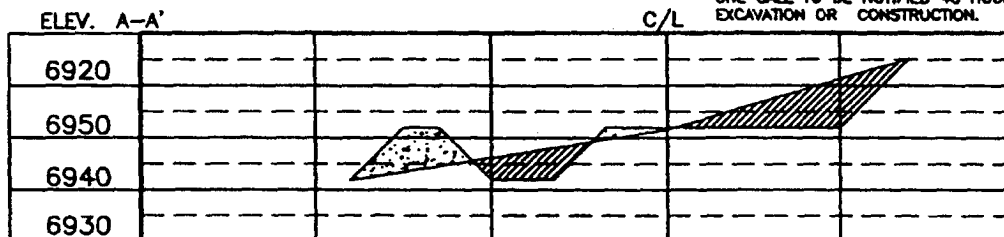
HUNTINGTON ENERGY, LLC
CANYON LARGO UNIT 466, 2010 FSL 900 FWL
SECTION 21, T-24-N, R-6-W, N.M.P.M., RIO ARriba COUNTY, NEW MEXICO
GROUND ELEVATION: 6952, DATE: AUGUST 17, 2004




RESERVE PIT DIKE: TO BE 8' ABOVE DEEP SIDE (OVERFLOW - 3' WIDE AND 1' ABOVE SHALLOW SIDE).
BLOW PIT: OVERFLOW PIPE HALFWAY BETWEEN TOP AND BOTTOM AND TO EXTEND OVER PLASTIC LINER AND INTO BLOW PIT.

NOTE:

DAGGETT ENTERPRISES, INC. IS NOT LIABLE FOR
UNDERGROUND UTILITIES OR PIPELINES. NEW MEXICO
ONE CALL TO BE NOTIFIED 48 HOURS PRIOR TO
EXCAVATION OR CONSTRUCTION.



NOTE: CONTRACTOR SHOULD CALL ONE-CALL FOR LOCATION OF ANY MARKED OR UNMARKED BURIED PIPELINES OR CABLES ON WELL PAD AND OR ACCESS ROAD AT LEAST TWO (2) WORKING DAYS PRIOR TO CONSTRUCTION.

| | | | |
|---|--|--|--|
|  | Daggett Enterprises, Inc. Surveying and Oil Field Services P. O. Box 15068 • Farmington, NM 87401 Phone (505) 328-1772 • Fax (505) 328-8019 NEW MEXICO L.S. No. 14831 | | DATE TIME DRAWN BY CHECKED BY |
| | PROJECT NO. 14831 DATE 08/30/04 | | DRAWN BY CHECKED BY |
| | PROJECT NO. 14831 DATE 08/30/04 | | DRAWN BY CHECKED BY |
| | PROJECT NO. 14831 DATE 08/30/04 | | DRAWN BY CHECKED BY |

OPERATIONS PLAN

Well Name: Canyon Largo Unit #466
Location: 2010' FSL, 900' FWL, SW/4 Sec 21, T-24-N, R-6-W NMPM
Rio Arriba County, NM
Formation: Basin Dakota
Elevation: 6952' GL

| <u>Formation Tops:</u> | <u>Top</u> | <u>Bottom</u> |
|------------------------|------------|---------------|
| Surface | San Jose | 1824' |
| Ojo Alamo | 1824' | 2014' |
| Kirkland | 2014' | 2104' |
| Fruitland | 2104' | 2359' |
| Pictured Cliffs | 2359' | 2464' |
| Lewis | 2464' | 2729' |
| Huerfano Bentonite | 2729' | 3219' |
| Chacra | 3219' | 3969' |
| Cliff House | 3969' | 3989' |
| Menefee | 3989' | 4649' |
| Point Lookout | 4649' | 4864' |
| Mancos | 4864' | 5884' |
| Gallup | 5884' | 6574' |
| Greenhorn | 6574' | 6634' |
| Graneros | 6634' | 6669' |
| Dakota | 6669' | 7029' |
| Morrison | 7029' | |
| TD | 7200' | |

Logging Program:

Open hole – Neutron-Density, Microlog – TD to minimum operations depth, DIL-GR-
TD to surface
Cased Hole – CBL-CCL-GR – TD to surface
Cores – none
Mud log – TD to 6000'

Mud Program:

| <u>Interval</u> | <u>Type</u> | <u>Weight</u> | <u>Vis.</u> | <u>Fluid Loss</u> |
|-----------------|-------------|---------------|-------------|-------------------|
| 0 – 320' | Spud | 8.4-8.9 | 40-50 | no control |
| 320 – 7200' | LSND | 8.4-9.0 | 40-60 | 8-12 |

Pit levels will be visually monitored to detect gain or loss of fluid control.

Casing Program:

| <u>Hole Size</u> | <u>Depth Interval</u> | <u>Csg. Size</u> | <u>Wt.</u> | <u>Grade</u> |
|------------------|-----------------------|------------------|------------|--------------|
| 12 1/4" | 0' – 320' | 8 5/8" | 24.0# | WC-50 |
| 7 7/8" | 0' – 7200' | 4 1/2" | 11.6# | N-80 |

Tubing Program:

| | | | |
|------------|--------|------|------|
| 0' – 7200' | 2 3/8" | 4.7# | J-55 |
|------------|--------|------|------|

BOP Specifications, Wellhead and Tests:

Surface to TD –

11" 3000 psi minimum double gate BOP stack (Reference Figure #1). After nipple-up prior to drilling out surface casing, rams and casing will be tested to 600 psi for 30 minutes.

2" nominal, 3000 psi minimum choke manifold (Reference Figure #3).

Completion Operations:

6" 3000 psi double gate BOP stack (Reference Figure #2). After nipple-up prior to completion, pipe rams and casing top will be tested to 3000 psi for 15 minutes.

Surface to Total Depth:

2" nominal, 3000 psi minimum choke manifold (Reference Figure #3).

Wellhead:

8 5/8" x 4 1/2" x 1 1/2" x 1 1/2" x 3000 psi tree assembly.

General:

- Pipe rams will be actuated once each day and blind rams will be actuated once each trip to test proper functioning.
- An upper Kelly cock valve with handle available and drill string valves to fit each drill string will be available on the rig floors at all times.
- A BOP pit level drill will be conducted weekly for each drilling crew.
- All of the BOP tests and drills will be recorded in the daily drilling reports.
- Blind and pipe rams will be equipped with extension hand wheels.

Cementing:

8 5/8" surface casing –

Cement to surface w/336 sx Class "B" cement w/3% calcium chloride and 1/4#/sx cellophane flakes (396 cu. ft. of slurry, 200% excess to circulate to surface).

WOC 8 hr. prior to drilling out surface casing. Test casing to 600 psi for 30 minutes.

Saw tooth guide shoe on bottom. Bowspring centralizers will be run in accordance with Onshore Order #2.

Production Casing – 4 1/2"

Lead with 800 sx 9.5 ppg Litecrete Blend w/0.11% dispersant, 0.5% fluid loss. Tail w/407 sx Class "G" cement w/3% gel, 0.25 pps Celloflake, 5 pps Gilsonite, 0.25 pps fluid loss, 0.15% dispersant, 0.1% retardant, 0.1% antifoam (Slurry volume: 2603 cu. ft. Excess slurry 50%).

Alternate Two-stage cement job as follows:

First Stage: Cement to circulate to stage tool @ 5066'. Lead with 700 sx Class "G" 50/50 poz (13#, 1.47 yd) w/3% gel, 0.25 pps Celloflake, 5 pps Gilsonite, 0.25 pps Fluid loss, 0.15% dispersant, 0.1% retarder. WOC 4 hours prior to pumping second stage. (Slurry volume: 1029 cu. ft. Excess slurry: 50%). DV Tool at 5000 ft.

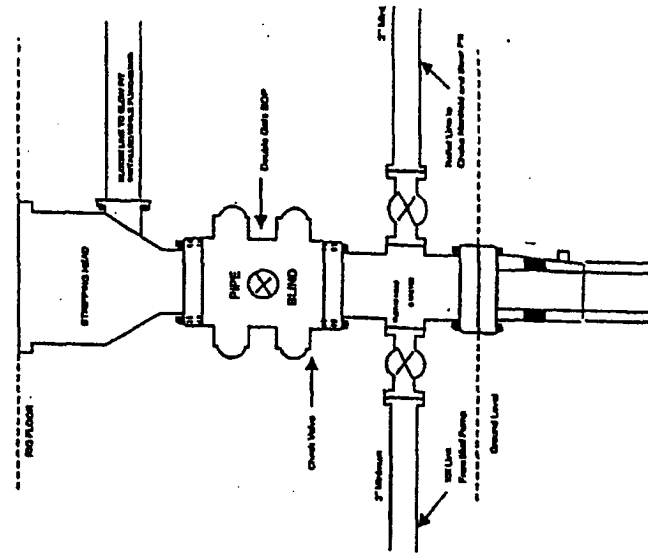
Second Stage: Cement to circulate to surface. Cement with 670 sx Class "G" (12#, 2.9yd) TXI Liteweight cement w/2.5% sodium metasilicate, 2% calcium chloride, 10 pps Gilsonite, 0.5 pps Celloflake, 0.2% antifoam. WOC a minimum of 18 hours prior to cleanout. (Slurry volume: 1914 cu. ft. Excess slurry: 50%). Tail w/50 sx Class "B" w/1/4# Flocele (15.6#, 1.18 yd), (Slurry 59 cu. ft., Excess 50%).

Float shoe on bottom. Three centralizers run every other joint above shoe. Thirty-five centralizers - one every 4th joint to the base of the Ojo Alamo @ 2448'. Two turbolizing type centralizers – one below and one into the base of the Ojo Alamo @ 2448'. Standard centralizers thereafter every fourth joint up to the base of the surface pipe.

Note: If open hole logs are run, cement volumes will be based on 25% excess over caliper volumes.

HUNTINGTON ENERGY, L.L.C.

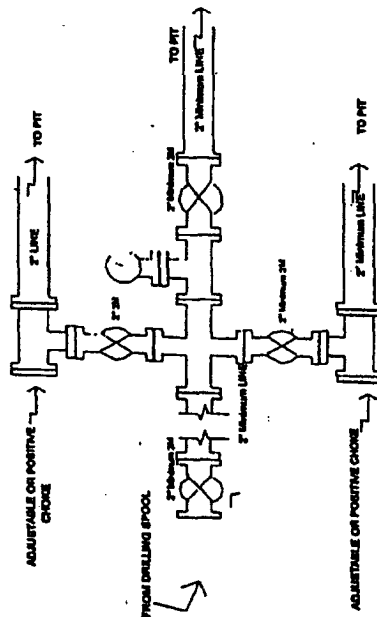
CompletionWorkover Rig BOP Configuration 2,000 psi System



Minimum BOP Installation for all CompletionWorkover Operations. 7-1/16" bore, 2000 psi minimum working pressure double gate BOP to be equipped with blind and pipe rams. A stripping head to be installed on the top of the BOP. All BOP equipment is 2000 psi working pressure or greater excluding 800 psi stripping head.

Figure #2

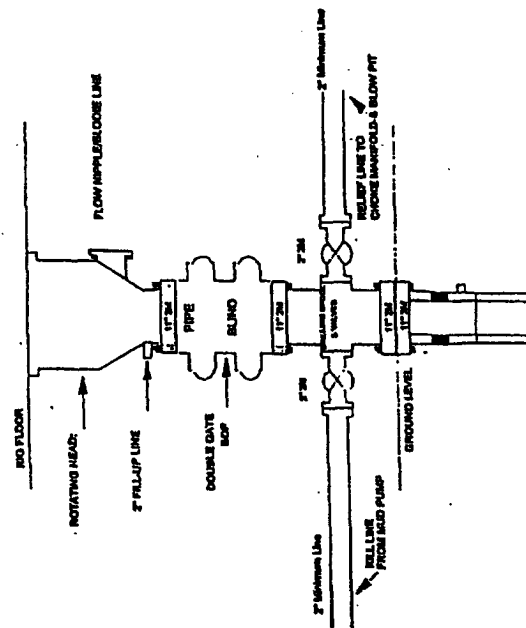
Drilling Rig Choke Manifold Configuration 2000 psi System



Choke manifold installation from Surface Casing Point to Total Depth. 2,000psi working pressure equipment with two chokes.

Figure #3

Drilling Rig 2000 psi System



BOP Installation from Surface Casing Point to Total Depth. 11" Bore 10" Nominal, 2000 psi working pressure double gate BOP to be equipped with blind rams and pipe rams. A 800 psi rotating head on top of ram preventer. All BOP equipment is 2,000 psi working pressure.

Figure #4