

submitted in lieu of Form 3160-5

UNITED STATES
DEPARTMENT OF THE INTERIOR
BUREAU OF LAND MANAGEMENT

Sundry Notices and Reports on Wells

1. Type of Well

GAS

2. Name of Operator

BURLINGTON

RESOURCES OIL & GAS COMPANY LP

3. Address & Phone No. of Operator

PO Box 4289, Farmington, NM 87499 (505) 326-9700

4. Location of Well, Footage, Sec., T, R, M

Sec., T--N, R--W, NMPM

Unit K (NESW), 2365' FSL & 1935' FWL, Sec. 9, T30N, R10W, NMPM

5. Lease Number

NMSF-077730

6. If Indian, All. or

Tribe Name

7. Unit Agreement Name

8. Well Name & Number

Sunray E #2M

9. API Well No.

30-045-30838

10. Field and Pool

Basin DK / Blanco MV

11. County and State

San Juan Co., NM

12. CHECK APPROPRIATE BOX TO INDICATE NATURE OF NOTICE, REPORT, OTHER DATA

Type of Submission

☒ Notice of Intent

☐ Subsequent Report

☐ Final Abandonment

Type of Action

☐ Abandonment

☐ Recompletion

☒ Plugging

☐ Casing Repair

☐ Altering Casing

☐ Change of Plans

☐ New Construction

☐ Non-Routine Fracturing

☐ Water Shut off

☐ Conversion to Injection

☐ Other Plug back DK interval & Install Pump

13. Describe Proposed or Completed Operations

TA
It is intended to ~~abandon~~ the Dakota interval of the subject well and then install a pump to dewater the MV interval. This well will then be a single producing MV well upon completion of the proposed work. See attached procedure and wellbore schematic.

CONDITIONS OF APPROVAL

Adhere to previously issued stipulations.

SEE ATTACHED FOR
CONDITIONS OF APPROVAL

2005 MAY 3 PM 4 12
RECEIVED
070 FARMINGTON NM

14. I hereby certify that the foregoing is true and correct.

Signed

Patsy Clugston

Patsy Clugston

Title Sr. Regulatory Specialist

Date 5/2/05

(This space for Federal or State Office use)

APPROVED BY

Jim Lovato

Title

Petr. Eng

Date

5/24/05

CONDITION OF APPROVAL if any:

Title 18 U.S.C. Section 1001, makes it a crime for any person knowingly and willfully to make any department or agency of the United States any false, fictitious or fraudulent statements or representations as to any matter within its jurisdiction.

NMOCGD

50-045-30838

Sunray E #2M
2365' S, 1935' W
K - 9 - 30N - 10W
San Juan County, NM
LAT: 36 DEG 49.6 LONG: 107 DEG 53.5
GL = 6,376' KB= 6,391'

Dakota abandonment and tubing pump install

1. Unseat pump and TOO H with rods and pump. Lay down approximately 1800' of 3/4" and 5/8" rods
2. ND wellhead and NU BOP. Release tubing hanger and TOO H with 2 3/8" tubing. PU bit and scraper and TIH to 7350'. TOO H and lay down approximately 1800' of tubing.
3. RU wireline and RIH to set CIBP at 7328' to abandon the Dakota. RD wireline.
4. PU tubing pump barrel and TIH on 2 3/8" tubing to land at +/- 5600'. Blow well around with air to determine water rates. ND BOP and NU wellhead.
5. PU tubing pump plunger and TIH on 5/8" and 3/4" rod string.
6. Notify lease operator. RDMO.

Sunray E #2M

2365' S, 1935' W

K - 9 - 30N - 10W

San Juan County, NM

LAT: 36 DEG 49.6

LONG: 107 DEG 53.5

GL = 6,376'

KB= 6,391'

Current Wellbore**Surface Casing:**

9-5/8" 32.3# H-40
 set @ 228
 Cement w/ 260 sx
 TOC @ Circ to surf

228'

Intermediate Casing:

7" 23.0# J-55
 set @ 3296
 DVT @ 2359 sx
 1st stg Circ to surf Cement w/ 88 sxs
 2nd stg Circ to surf Cement w/ 90 sxs

3,296'

Current Tubing:

2-3/8" 237 jts
 4.7# J-55
 set @ 7400

Current Pump and Rods:

2" X 1 1/4" X 10 X 14' RHAC-Z PUMP BR 757

3/4" PIN, SANDCHECK, SPIRAL ROD GUIDE, LIFT SUB. 4 - 1.250 SINKER BARS 1 -
 .750 GUIDED ROD 162 - .750 TYPE "D" SUCKER RODS (BR YARD INSPECTED) 147 -
 .875 PLAIN RODS TYPE "D" 1 - 1.250 POLISH ROD AND 10' 1.500 LINER

Production Liner:

4-1/2" 10.5# J-55
 set @ 3113' - 7592'
 Cement w/ 337 sx
 TOC @ Circ to surf

Cmt ret @ 7430'
 Cmt ret @ 7510'

3113' - 7592'

PBTD= 7,588'
 TD= 7,593'

Ojo Alamo 1,630'
 Kirtland 1,768'
 Fruitland Coal 2,468'
 Pictured Cliffs 3,010'
 Lewis 3,162'
 Huer Bent 3,741'
 Chacra 4,050'
 Massive Cliff House 4,525'
 Menefee 4,842'
 Point Lookout 5,238'
 Mancos 5,686'
 Gallup 6,534'
 Greenhorn 7,272'
 Graneros 7,324'
 Dakota 7,470'

LW 3929' - 4397'

Sqz'd 3929' - 4397' w/ 200 sxs type III cmt (12/02)
 Fractured with 75Q foamed 20# linear gel
 and 200,000# sand

PLO/LWR MN 4912' - 5574'

Sqz'd 4912' - 4984' w/ 200 sxs type III cmt (12/02)
 Fractured with 108,700 gal sw and
 100,000# sand

DK

7378' - 7539'

Fractured with 116,900 gal sw and
 37,000# TLC

ARI

05/02/05

Sunray E #2M

2365' S, 1935' W

K - 9 - 30N - 10W

San Juan County, NM

LAT: 36 DEG 49.6

LONG: 107 DEG 53.5

GL = 6,376'

KB= 6,391'

Proposed Wellbore**Surface Casing:**

9-5/8" 32.3# H-40
 set @ 228
 Cement w/ 260 sx
 TOC @ Circ to surf

Intermediate Casing:

7" 23.0# J-55
 set @ 3296
 DVT @ 2359 sx
 1st stg Circ to surf Cement w/ 88 sxs
 2nd stg Circ to surf Cement w/ 90 sxs

Proposed Tubing:

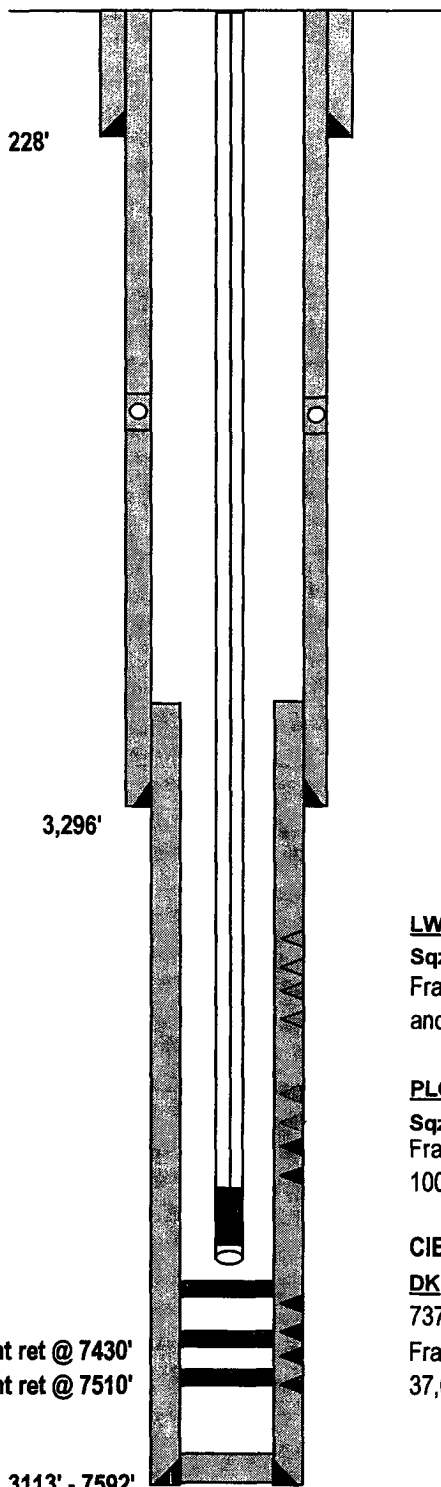
2-3/8" 4.7# J-55
 set @ +/- 5600'

Proposed Pump and Rods:

Tubing pump design to be determined

Production Liner:

4-1/2" 10.5# J-55
 set @ 3113' - 7592'
 Cement w/ 337 sx
 TOC @ Circ to surf



Cmt ret @ 7430'
 Cmt ret @ 7510'

3113' - 7592'

PBTD= 7,588'
 TD= 7,593'

Ojo Alamo 1,630'
 Kirtland 1,768'
 Fruitland Coal 2,468'
 Pictured Cliffs 3,010'
 Lewis 3,162'
 Huer Bent 3,741'
 Chacra 4,050'
 Massive Cliff House 4,525'
 Menefee 4,842'
 Point Lookout 5,238'
 Mancos 5,686'
 Gallup 6,534'
 Greenhorn 7,272'
 Graneros 7,324'
 Dakota 7,470'

LW 3929' - 4397'
 Sqz'd 3929' - 4397' w/ 200 sxs type III cmt (12/02)
 Fractured with 75Q foamed 20# linear gel
 and 200,000# sand

PLO/LWR MN 4912' - 5574'
 Sqz'd 4912' - 4984' w/ 200 sxs type III cmt (12/02)
 Fractured with 108,700 gal sw and
 100,000# sand

CIBP set @ 7328'

DK
 7378' - 7539'
 Fractured with 116,900 gal sw and
 37,000# TLC

ARI

05/02/05

Bureau of Land Management Conditions of Approval:

- 1) If this well is located in a Specially Designated Area (SDA), compliance with the appropriate seasonal closure requirements will be necessary.**
- 2) Pits must be lined with an impervious material at least 12 mils thick. The pit must be fenced on three (3) sides during workover operations and on the 4th side after the rig moves off location. Pits must be closed within 90 days of completion of the workover operations. Prior to closing the pit the liner must be cut off at mud level.**