

UNITED STATES
DEPARTMENT OF THE INTERIOR
BUREAU OF LAND MANAGEMENT

APPLICATION FOR PERMIT TO DRILL, DEEPEN, OR PLUG BACK

1a. Type of Work DRILL	2005 MAR 4 PM 4 57	5. Lease Number NMSF-077911
1b. Type of Well GAS	RECEIVED 070 FARMINGTON	Unit Reporting Number
2. Operator BURLINGTON RESOURCES Oil & Gas Company		7. Unit Agreement Name
3. Address & Phone No. of Operator PO Box 4289, Farmington, NM 87499 (505) 326-9700	MAY 2005 CLARK CO. NV. DIST. 3	8. Farm or Lease Name Oswell Federal
4. Location of Well Unit F (SENW), 1330' FNL, 1685' FWL Latitude 36° 45.4711'N Longitude 107° 59.9700'N		9. Well Number #100
		10. Field, Pool, Wildcat Basin Fruitland Coal
		11. Sec., Twn, Rge, Mer. (NMPM) F Sec. 4, T29N, R11W
		API # 30-045- 32939
14. Distance in Miles from Nearest Town 4.4 miles to Inters Hwy 550 & Hwy 64 Bloomfield,	12. County San Juan	13. State NM
15. Distance from Proposed Location to Nearest Property or Lease Line 1330'		
16. Acres in Lease	17. Acres Assigned to Well 306.55	
18. Distance from Proposed Location to Nearest Well, Drig, Compl, or Applied for on this Lease 76'		
19. Proposed Depth 2253'	20. Rotary or Cable Tools Rotary	
21. Elevations (DF, FT, GR, Etc.) 5814' GL	22. Approx. Date Work will Start	
23. Proposed Casing and Cementing Program See Operations Plan attached		
24. Authorized by: <u>Patsy Chugota</u> Sr. Regulatory Specialist	Date <u>3/5/05</u>	

PERMIT NO.

APPROVAL DATE

APPROVED BY

TITLE

DATE 5-19-05

Archaeological Report attached

Threatened and Endangered Species Report attached

NOTE: This format is issued in lieu of U.S. BLM Form 3160-3

Title 18 U.S.C. Section 1001, makes it a crime for any person knowingly and willfully to make to any department or agency of the United States any false, fictitious or fraudulent statements or presentations as to any matter within its jurisdiction.

This action is subject to technical and procedural review pursuant to 43 CFR 3165.3 and appeal pursuant to 43 CFR 3165.4

NMOC

DRILLING OPERATIONS AUTHORIZED ARE
SUBJECT TO COMPLIANCE WITH ATTACHED
"GENERAL REQUIREMENTS".

DISTRICT I
1625 N. French Dr., Hobbs, N.M. 88240

DISTRICT II
1301 W. Grand Ave., Artesia, N.M. 88210

DISTRICT III
1000 Rio Brazos Rd., Aztec, N.M. 87410

DISTRICT IV
1220 South St. Francis Dr., Santa Fe, NM 87505

State of New Mexico
Energy, Minerals & Natural Resources Department

OIL CONSERVATION DIVISION

1220 South St. Francis Dr.
Santa Fe, NM 87505

Form C-102
Revised June 10, 2003

Submit to Appropriate District Office
State Lease - 4 Copies
Fee Lease - 3 Copies

☐ AMENDED REPORT

WELL LOCATION AND ACREAGE DEDICATION PLAT

*API Number 30-045- 32939	*Pool Code 71629	*Pool Name Basin Fruitland Coal
*Property Code 7374	*Property Name OSWELL FEDERAL	*Well Number 100
*OGRID No. 14538	*Operator Name BURLINGTON RESOURCES OIL & GAS COMPANY LP	*Elevation 5814'

¹⁰ Surface Location

UL or lot no.	Section	Township	Range	Lot Idn	Feet from the	North/South line	Feet from the	East/West line	County
F	4	29-N	11-W		1330	NORTH	1685	WEST	SAN JUAN

¹¹ Bottom Hole Location If Different From Surface

UL or lot no.	Section	Township	Range	Lot Idn	Feet from the	North/South line	Feet from the	East/West line	County
*Dedicated Acres W/306.55			*Joint or Infill		*Consolidation Code		*Order No.		

NO ALLOWABLE WILL BE ASSIGNED TO THIS COMPLETION UNTIL ALL INTERESTS HAVE BEEN CONSOLIDATED
OR A NON-STANDARD UNIT HAS BEEN APPROVED BY THE DIVISION

16

32	33	S 88-39-55 E - 2604.44' (M)
FOUND STONE FOUND 3 1/4" B.L.M. BC 1969 LOT 4 USA-SF-043260-B	1330 LOT 3 USA-SF-043260-C	FOUND 3 1/4" B.L.M. BC 1969 LOT 2 LOT 1
1685'	LAT. 36°45.4711' N. (NAD 27) LONG. 107°59.9700 W. (NAD 27) USA SF-077911	
N 0-09-00 E 5063.52' (C)	4 MAY 2005 OIL CONSERVATION DIV. SANTA FE, NM	
USA SF-080865	RECEIVED 070 FARMINGTON NM	
CALC'D. CORNER		

17 OPERATOR CERTIFICATION

I hereby certify that the information contained herein
is true and complete to the best of my knowledge and
belief.

Tammy Jones
Signature

Tammy Jones
Printed Name

Regulatory Specialist
Title

1-17-05
Date

18 SURVEYOR CERTIFICATION

I hereby certify that the well location shown on this plat
was plotted from field notes of actual surveys made by
me or under my supervision, and that the same is true
and correct to the best of my belief.

JOHN VUKONICH
Date of Survey

14831
Signature and Seal of Professional Surveyor

Certificate Number

Office

District I

1625 N. French Dr., Hobbs, NM 88240

District II

1301 W. Grand Ave., Artesia, NM 88210

District III

1000 Rio Brazos Rd., Aztec, NM 87410

District IV

1220 S. St. Francis Dr., Santa Fe, NM 87505

State of New Mexico

Energy, Minerals and Natural Resources

Form C-103

May 27, 2004

OIL CONSERVATION DIVISION

1220 South St. Francis Dr.

Santa Fe, NM 87505

WELL API NO.

30-045-

5. Indicate Type of Lease

STATE ☐FEE ☐

6. State Oil & Gas Lease No.

SF-077911

7. Lease Name or Unit Agreement Name

Oswell Federal

8. Well Number

100

9. OGRID Number

14538

10. Pool name or Wildcat

Basin Fruitland Coal

SUNDRY NOTICES AND REPORTS ON WELLS

(DO NOT USE THIS FORM FOR PROPOSALS TO DRILL OR TO DEEPEN OR PLUG BACK TO A DIFFERENT RESERVOIR. USE "APPLICATION FOR PERMIT" (FORM C-101) FOR SUCH PROPOSALS.)

1. Type of Well:

Oil Well ☐Gas Well ☒

Other

2. Name of Operator

BURLINGTON RESOURCES OIL & GAS COMPANY LP

3. Address of Operator

3401 E. 30TH STREET, FARMINGTON, NM 87402

4. Well Location

Unit Letter

F

:

1330

feet from the

North

line and

1685

feet from the

West

line

Section

4

Township

29N

Range

11W

NMPM

County

San Juan, NM

11. Elevation (Show whether DR, RKB, RT, GR, etc.)

Pit or Below-grade Tank Application

☒ or Closure

Pit type

New Drill

Depth to Groundwater

> 100'

Distance from nearest fresh water well

>1000'

Distance from nearest surface water

< 1000'

Pit Liner Thickness:

12

mil

Below-Grade Tank:

Volume

bbls;

Construction Material

12. Check Appropriate Box to Indicate Nature of Notice, Report or Other Data

NOTICE OF INTENTION TO:

PERFORM REMEDIAL WORK ☐PLUG AND ABANDON ☐TEMPORARILY ABANDON ☐CHANGE PLANS ☐PULL OR ALTER CASING ☐MULTIPLE COMPL ☐

OTHER:

New Drill ☒

SUBSEQUENT REPORT OF:

REMEDIAL WORK ☐ALTERING CASING ☐COMMENCE DRILLING OPNS. ☐P AND A ☐CASING/CEMENT JOB ☐OTHER: ☐

13. Describe proposed or completed operations. (Clearly state all pertinent details, and give pertinent dates, including estimated date of starting any proposed work). SEE RULE 1103. For Multiple Completions: Attach wellbore diagram of proposed completion or recompletion.

Burlington Resources proposes to construct a new drilling pit and an associated vent/flare pit. Based on Burlington's interpretation of the Ecosphere's risk ranking criteria, the new drilling pit will be a lined pit as detailed in Burlington's Revised Drilling / Workover Pit Construction / Operation Procedures dated November 11, 2004 on file at the NMOCD office. A portion of the vent/flare pit will be designed to manage fluids and that portion will be lined as per the risk ranking criteria. Burlington Resources anticipates closing these pits according to the Drilling / Workover Pit Closure Procedure dated August 2, 2004 on file at the NMOCD office.

I hereby certify that the information above is true and complete to the best of my knowledge and belief. I further certify that any pit or below-grade tank has been/will be constructed or closed according to NMOCD guidelines ☐, a general permit ☒ or an (attached) alternative OCD-approved plan ☐.

SIGNATURE

TITLE

Sr. Regulatory Specialist

DATE

12/16/2004

Type or print name

Joni Clark

E-mail address:

jclark@br-inc.com

Telephone No.

326-9700

For State Use Only

APPROVED BY

TITLE

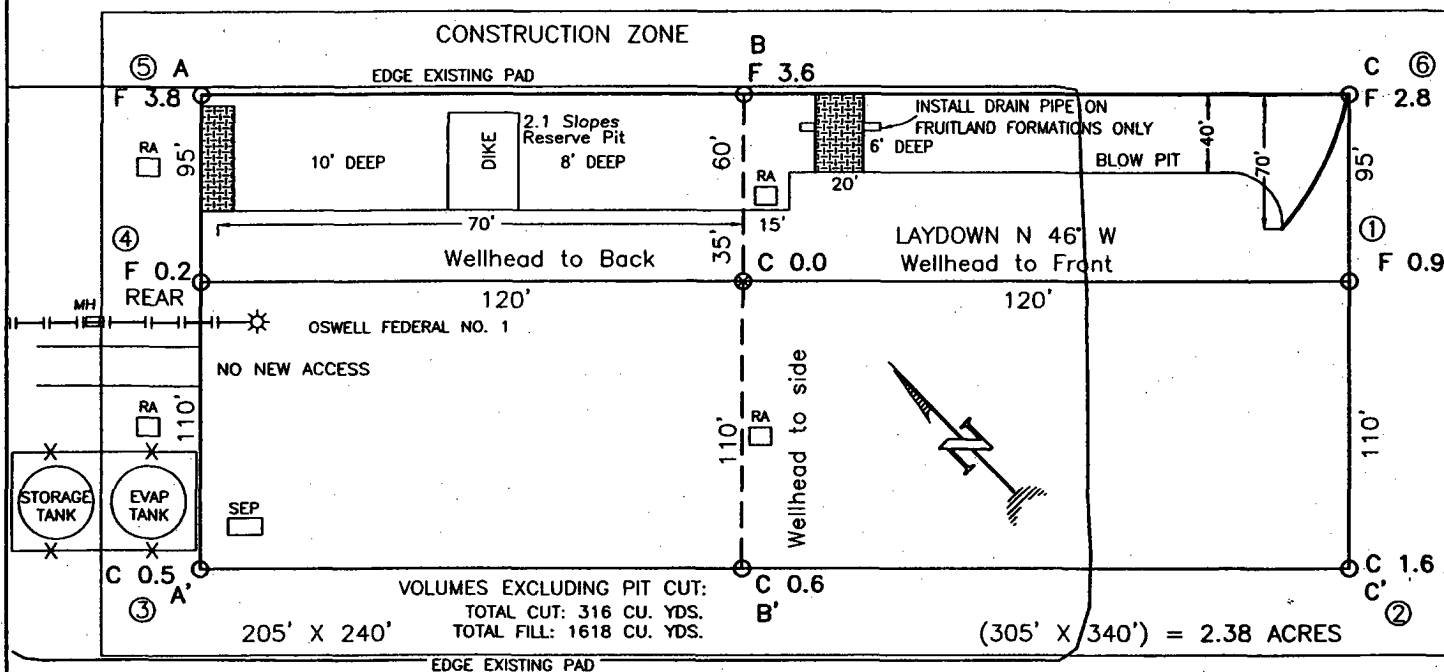
DEPUTY OIL & GAS INSPECTOR, DIST. 50

DATE

MAY 23 2005

Conditions of Approval (if any):

BURLINGTON RESOURCES OIL & GAS COMPANY LP
 OSWELL FEDERAL NO. 100, 1330 FNL 1685 FWL
 SECTION 4, T-29-N, R-11-W, N.M.P.M., SAN JUAN COUNTY, NEW MEXICO
 GROUND ELEVATION: 5814, DATE: OCTOBER 19, 2004

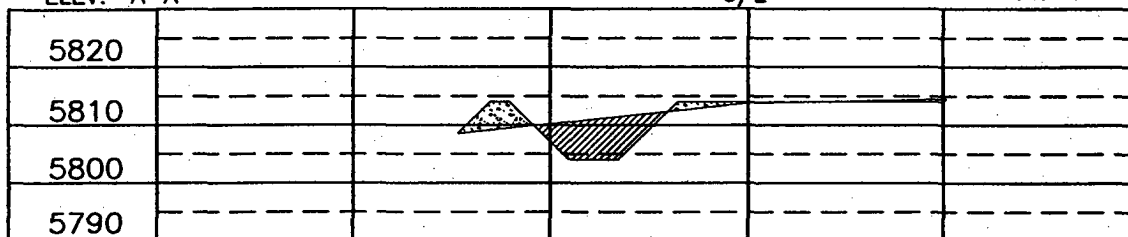


RESERVE PIT DIKE: TO BE 8' ABOVE DEEP SIDE (OVERFLOW - 3' WIDE AND 1' ABOVE SHALLOW SIDE).
 BLOW PIT: OVERFLOW PIPE HALFWAY BETWEEN TOP AND BOTTOM AND TO EXTEND OVER PLASTIC LINER AND INTO BLOW PIT.

NOTE: DAGGETT ENTERPRISES, INC. IS NOT LIABLE FOR
 UNDERGROUND UTILITIES OR PIPELINES. NEW MEXICO
 ONE CALL TO BE NOTIFIED 48 HOURS PRIOR TO
 EXCAVATION OR CONSTRUCTION.

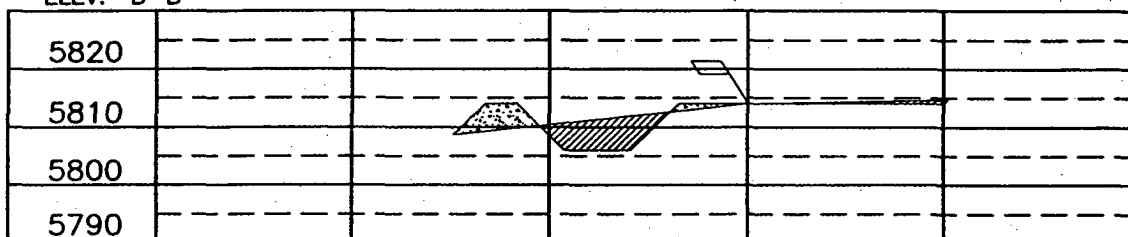
ELEV. A-A'

C/L



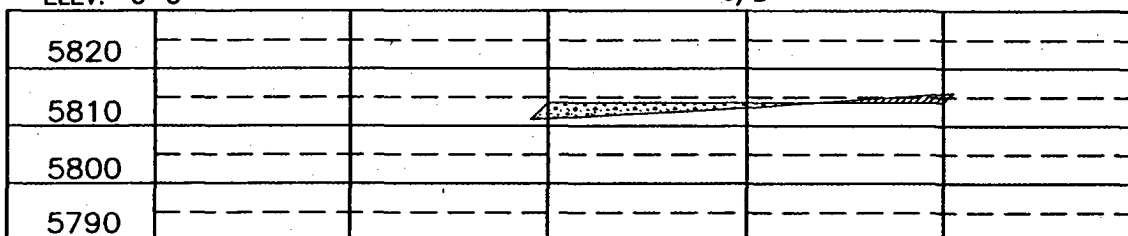
ELEV. B-B'

C/L



ELEV. C-C'

C/L



NOTE: CONTRACTOR SHOULD CALL ONE-CALL FOR LOCATION OF ANY MARKED OR UNMARKED BURIED PIPELINES OR
 CABLES ON WELL PAD AND OR ACCESS ROAD AT LEAST TWO (2) WORKING DAYS PRIOR TO CONSTRUCTION.

REVISION:	DATE:	REVISION BY:	DATE:

Daggett Enterprises, Inc.
 Surveying and Oil Field Services
 P. O. Box 15068 · Farmington, NM 87401
 Phone (505) 326-1772 · Fax (505) 326-6019
 NEW MEXICO L.S. No. 14831
 COPIE: BR534CFB
 DATE: 11/03/04

DRWN BY: G.V.
 ROW# BR534

OPERATIONS PLAN

Well Name: Oswell Federal 100
Location: 1330' FNL, 1685' FWL Section 4, T-29-N, R-11-W
Latitude 36° 45.4711'N, Longitude 107° 59.9700'W
San Juan, NM
Formation: Basin Fruitland Coal
Elevation: 5814' GR

Formation:	Top	Bottom	Contents
Surface	San Jose	706'	
Ojo Alamo	706'	818'	aquifer
Kirtland	818'	1803'	
Fruitland Coal	1803'	2033'	gas
B/Basal Coal	2033'	2053'	gas
Pictured Cliffs	2053'		
Total Depth	2253'		

Logging Program: None
Mudlog: None
Coring Program: None
Cased Hole: GR/CBL

Mud Program:

Interval	Type	Weight	Vis.	Fluid Loss
0- 120'	Spud Mud/Air/Air Mist	8.4-9.0	40-50	no control
0-2253'	Polymer Mud/Polymer Starch	8.4-9.0	40-50	no control

Casing Program (as listed, the equivalent, or better):

Hole Size	Depth Interval	Csg. Size	Wt.	Grade
8 3/4"	0' - 120'	7"	20#	J-55
6 1/4"	0' - 2253'	4 1/2"	10.5#	J-55

Tubing Program:

0' - 2253' 2 3/8" 4.7# J-55

Float Equipment: 7" surface casing - guide shoe. Centralizers will be run in accordance with Onshore Order #2.

4 1/2" production casing - guide shoe and float collar. Standard centralizers run every third joint above shoe. Two turbolizing type centralizers - one below and one into the base of the Ojo Alamo @ 818'. Standard centralizers thereafter every fourth joint up to the base of the surface pipe.

Wellhead Equipment: 7" x 4 1/2" x 2 3/8" 2000 psi xmas tree assembly.

Cementing:

7" surface casing -

Pre-Set Drilled Cement with 34 sx Type I, II cement with 20% flyash mixed at 14.5 ppg, 1.61 cu ft per sack yield. (54 cu ft of slurry, bring cement to surface) Wait on cement for 24 hours for pre-set holes before pressure testing or drilling out from under surface.

Conventionally Drilled

Cement with 43 sx Type III cement with 0.25 pps Celloflake, 3% CaCl. (54 cu ft of slurry, 200% excess, bring cement to surface) Wait on cement for 8 hrs for conventionally set holes before pressure testing or drilling out from under surface.

WOC until cement establishes 250 psi compressive strength prior to NU of BOPE.

4 ½" production casing - lead w/104 sacks Premium Lite with 3% calcium chloride, 5 pps LCM-1, and 1/4#/sack celloflake, 0.4% FL-52, & 0.4% SMS. Tail with 90 sacks Type III cmt with 1% calcium chloride, 1/4#/sack celloflake and 0.2% FL-52 (346 cu.ft., 50% excess to circulate to surface).

Note: If open hole logs are run, cement volumes will be based on 25% excess over caliper volumes.

BOP and tests:

Surface to production TD - 11" 2000 psi (minimum) double gate BOP stack (Reference Figure #1). Prior to drilling out surface casing, test BOPE to 600 psi for 30 min.

From surface to production TD - a choke manifold will be installed in accordance with Onshore Order No. 2 (Reference Figure #3).

Pipe rams will be actuated at least once each day and blind rams actuated once each trip to test proper functioning. An upper kelly cock valve with handle and drill string safety valves to fit each drill string will be maintained and available on the rig floor.

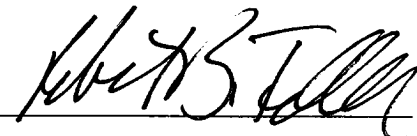
Additional information:

- * The Fruitland Coal formation will be completed.
- * Anticipated pore pressure for the Fruitland is less than 500 psi.
- * This gas is dedicated.
- * Lots 3, 4 & NESW, S2SW4, S2NW4, NWSW of Section 4 is dedicated to the Fruitland Coal.

Date:

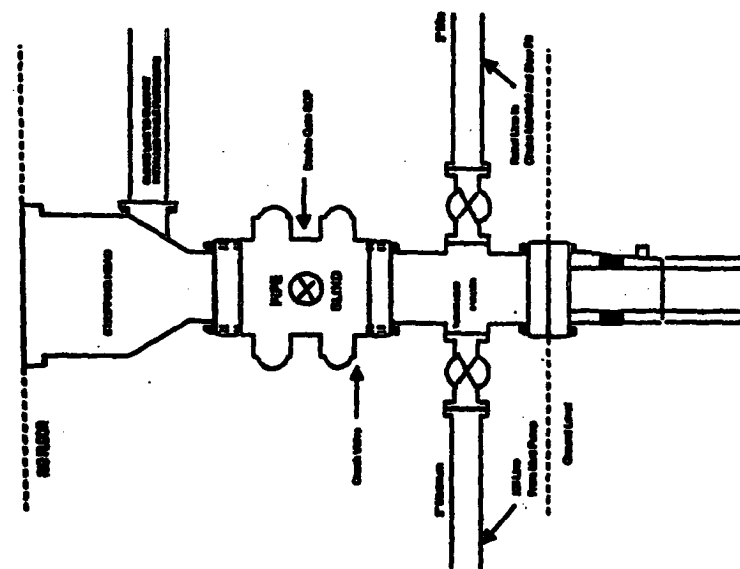
1-17-05

Drilling Engineer:



BURLINGTON RESOURCES

Completion/Workover Rig BOP Configuration 2,000 psi System

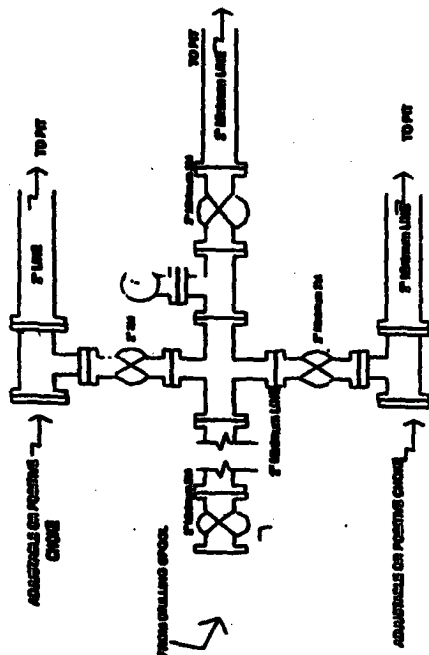


Minimum BOP installation for all Completion/Workover Operations. 7-1/2" bore, 2000 psi minimum working pressure double gate BOP to be equipped with blind and pipe rams. A stripping head to be installed on the top of the BOP. All BOP equipment is 2000 psi working pressure or greater excluding 500 psi stripping head.

Figure #2

4-20-01

Drilling Rig Choke Manifold Configuration 2000 psi System



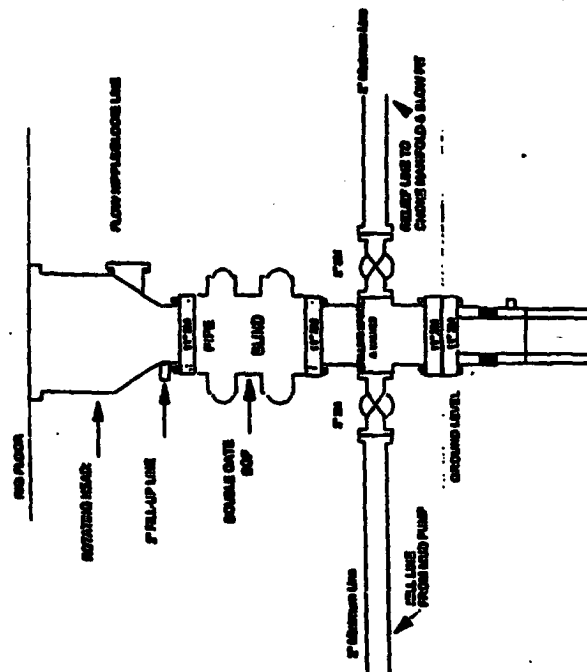
Choke manifold installation from Surface Casing Point to Total Depth. 2,000psi working pressure equipment with two chokes.

Figure #3

4-20-01

Burlington Resources

Drilling Rig 2000 psi System



BOP installation from Surface Casing Point to Total Depth. 11" Bore 10" Minimum, 2000 psi working pressure double gate BOP to be equipped with blind rams and pipe rams. A 200 psi casing head on top of the BOP. All BOP equipment is 2,000 psi working pressure or greater.

Figure #1