

UNITED STATES
DEPARTMENT OF THE INTERIOR
BUREAU OF LAND MANAGEMENT

APPLICATION FOR PERMIT TO DRILL, DEEPEN, OR PLUG BACK

2005 MAY 13 10 1 00
RECEIVED
OTO FARMING COMPANY

1a. Type of Work
DRILL

5. Lease Number
NMSF-07791
Unit Reporting Number

1b. Type of Well
GAS

6. If Indian, All. or Tribe

2. Operator
BURLINGTON
RESOURCES Oil & Gas Company

7. Unit Agreement Name

3. Address & Phone No. of Operator
PO Box 4289, Farmington, NM 87499
(505) 326-9700

8. Farm or Lease Name
Oswell Federal

9. Well Number
#100S

4. Location of Well
Unit L (NWSW), 1590' FSL, 1225' FWL

Latitude 36° 45.1045'N
Longitude 108° 00.0711'W

10. Field, Pool, Wildcat
Basin Fruitland Coal

11. Sec., Twn, Rge, Mer. (NMPM)
Sec. 4, T29N, R11W
API # 30-045- 33100

14. Distance in Miles from Nearest Town
7 miles to Interstate 550 & 64 Bloomfield, NM

12. County
San Juan

13. State
NM

15. Distance from Proposed Location to Nearest Property or Lease Line
1225'

16. Acres in Lease

17. Acres Assigned to Well
306.56 W/2

18. Distance from Proposed Location to Nearest Well, Drig, Compl, or Applied for on this Lease
2253' - Oswell Federal #1

19. Proposed Depth
2244'

20. Rotary or Cable Tools
Rotary

21. Elevations (DF, FT, GR, Etc.)
5830' GL

22. Approx. Date Work will Start

23. Proposed Casing and Cementing Program
See Operations Plan attached

24. Authorized by: Ammanda Sandaval
Regulatory Compliance Assistant II

5-19-05
Date

PERMIT NO.

APPROVAL DATE

APPROVED BY

TITLE

DATE

Archaeological Report attached

Threatened and Endangered Species Report attached

NOTE: This format is issued in lieu of U.S. BLM Form 3160-3

Title 18 U.S.C. Section 1001, makes it a crime for any person knowingly and willfully to make to any department or agency of the United States any false, fictitious or fraudulent statements or presentations as to any matter within its jurisdiction.

NMOC

DISTRICT I
1625 N. French Dr., Hobbs, N.M. 88240

State of New Mexico
Energy, Minerals & Natural Resources Department

Form C-102
Revised August 15, 2000

DISTRICT II
811 South First, Artesia, N.M. 88210

DISTRICT III
1000 Rio Brazos Rd., Aztec, N.M. 87410

DISTRICT IV
2040 South Pacheco, Santa Fe, NM 87505

OIL CONSERVATION DIVISION

2040 South Pacheco
Santa Fe, NM 87505

Submit to Appropriate District Office
State Lease - 4 Copies
Fee Lease - 3 Copies

☐ AMENDED REPORT

WELL LOCATION AND ACREAGE DEDICATION PLAT

¹ API Number 30-045-33100	² Pool Code 71629	³ Pool Name Basin Fruitland Coal
⁴ Property Code 7374	⁵ Property Name OSWELL FEDERAL	⁶ Well Number 100S
⁷ GRID No. 14538	⁸ Operator Name BURLINGTON RESOURCES OIL AND GAS COMPANY LP	⁹ Elevation 5830'

¹⁰ Surface Location

UL or lot no.	Section	Township	Range	Lot Idn	Feet from the	North/South line	Feet from the	East/West line	County
L	4	29-N	11-W		1590'	SOUTH	1225'	WEST	SAN JUAN

¹¹ Bottom Hole Location If Different From Surface

UL or lot no.	Section	Township	Range	Lot Idn	Feet from the	North/South line	Feet from the	East/West line	County
L									
¹² Dedicated Acres 306.56 ac W/2			¹³ Joint or Infill		¹⁴ Consolidation Code		¹⁵ Order No.		

NO ALLOWABLE WILL BE ASSIGNED TO THIS COMPLETION UNTIL ALL INTERESTS HAVE BEEN CONSOLIDATED
OR A NON-STANDARD UNIT HAS BEEN APPROVED BY THE DIVISION

<div><div><div>USA SF-043280-B</div><div>LOT 4</div></div><div><div>USA SF-043280-C</div><div>LOT 3</div></div><div><div>LOT 2</div></div><div><div>LOT 1</div></div></div> <div><div><div>USA SF-07791</div><div>1225'</div><div>1590'</div><div>LAT: 38°45.1045' N. LONG: 108°00.0711' W. NAD 1987</div><div>N 88-56-37 E 2849.65'</div></div><div><div>4</div><div>1590'</div></div></div> <div><div>17 OPERATOR CERTIFICATION</div><div>I hereby certify that the information contained herein is true and complete to the best of my knowledge and belief</div><div><div>Patsy Clugston</div><div>Signature</div><div>Patsy Clugston</div><div>Printed Name</div><div>Sr. Regulatory Specialist</div><div>Title</div><div>4-4-05</div><div>Date</div></div></div> <div><div>18 SURVEYOR CERTIFICATION</div><div>I hereby certify that the well location shown on this plat was plotted from field notes of actual surveys made by me or under my supervision, and that the same is true and correct to the best of my belief.</div><div><div>Date of Survey</div><div>Signature and Seal of Professional Surveyor</div><div>15703</div><div>Certificate Number</div><div>15703</div></div></div>

Office

Energy, Minerals and Natural Resources

May 27, 2004

District I

1625 N. French Dr., Hobbs, NM 88240

District II

1301 W. Grand Ave., Artesia, NM 88210

District III

1000 Rio Brazos Rd., Aztec, NM 87410

District IV

1220 S. St. Francis Dr., Santa Fe, NM 87505

OIL CONSERVATION DIVISION

1220 South St. Francis Dr.

Santa Fe, NM 87505

WELL API NO.

30-045-

5. Indicate Type of Lease

STATE ☐FEE ☐

6. State Oil & Gas Lease No.

NMSF-07791

7. Lease Name or Unit Agreement Name

Oswell Federal

8. Well Number

100S

9. OGRID Number

14538

10. Pool name or Wildcat

Basin Fruitland Coal

SUNDRY NOTICES AND REPORTS ON WELLS
(DO NOT USE THIS FORM FOR PROPOSALS TO DRILL OR TO DEEPEN OR PLUG BACK TO A
DIFFERENT RESERVOIR. USE "APPLICATION FOR PERMIT" (FORM C-101) FOR SUCH
PROPOSALS.)

1. Type of Well:

Oil Well ☐Gas Well ☒

Other

2. Name of Operator

BURLINGTON RESOURCES OIL & GAS COMPANY LP

3. Address of Operator

3401 E. 30TH STREET, FARMINGTON, NM 87402

4. Well Location

Unit Letter L : 1590 feet from the South line and 1225 feet from the West lineSection 4 Township 29N Range 11W NMPM County San Juan

11. Elevation (Show whether DR, RKB, RT, GR, etc.)

5830'

Pit or Below-grade Tank Application

☒ or Closure ☐

Pit type

New Drill

Depth to Groundwater

>100'

Distance from nearest fresh water well

>1000'

Distance from nearest surface water

>1000'

Pit Liner Thickness:

na

mil

Below-Grade Tank:

Volume

bbls;

Construction Material

12. Check Appropriate Box to Indicate Nature of Notice, Report or Other Data

NOTICE OF INTENTION TO:

PERFORM REMEDIAL WORK ☐TEMPORARILY ABANDON ☐PULL OR ALTER CASING ☐PLUG AND ABANDON ☐CHANGE PLANS ☐MULTIPLE COMPL ☐

SUBSEQUENT REPORT OF:

REMEDIAL WORK ☐COMMENCE DRILLING OPNS. ☐CASING/CEMENT JOB ☐ALTERING CASING ☐P AND A ☐

OTHER:

New Drill Pit ☒OTHER: ☐

13. Describe proposed or completed operations. (Clearly state all pertinent details, and give pertinent dates, including estimated date of starting any proposed work). SEE RULE 1103. For Multiple Completions: Attach wellbore diagram of proposed completion or recompletion.

Burlington Resources proposes to construct a new drilling pit and an associated vent/flare pit. Based on Burlington's interpretation of the Ecosphere's risk ranking criteria, the new drilling pit and vent/flare pit will be an unlined pit as detailed in Burlington's Revised Drilling / Workover Pit Construction / Operation Procedures dated November 11, 2004 on file at the NMOCD office. A portion of the vent/flare pit will be designed to manage fluids, and that portion will be unlined, as per the risk ranking criteria. Burlington Resources anticipates closing these pits according to the Drilling / Workover Pit Closure Procedure dated August 2, 2004 on file at the NMOCD office.

I hereby certify that the information above is true and complete to the best of my knowledge and belief. I further certify that any pit or below-grade tank has been/will be constructed or closed according to NMOCD guidelines ☐, a general permit ☒ or an (attached) alternative OCD-approved plan ☐.

SIGNATURE

Amanda Sandoval

TITLE

Regulatory Compliance Assistant II

DATE

5/3/2005

Type or print name

Amanda Sandoval

E-mail address:

asandoval@br-inc.com

Telephone No.

505-326-9700

For State Use Only

DEPUTY OIL & GAS INSPECTOR, DIST. #2

JUN 10 2005

APPROVED BY

[Signature]

TITLE

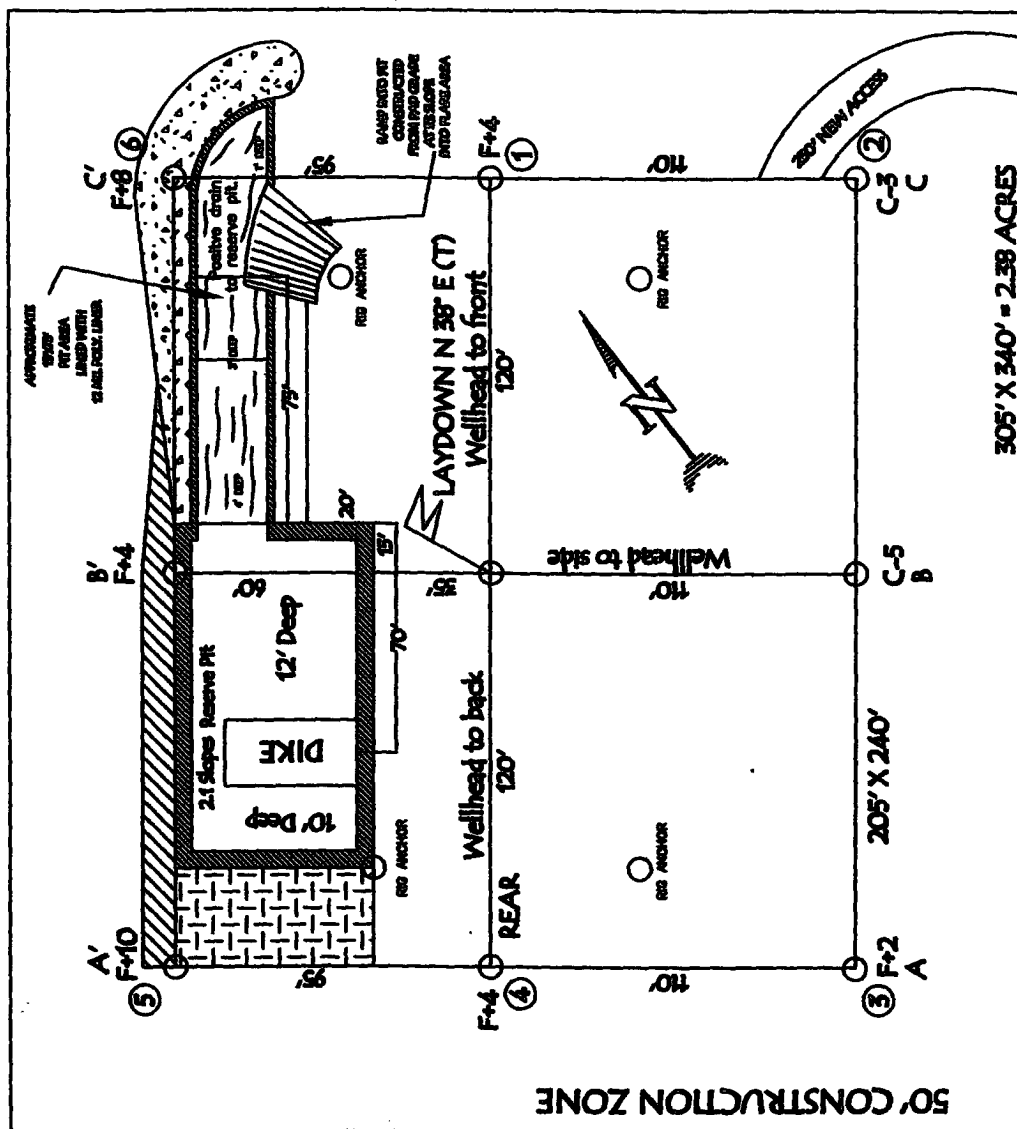
DATE

Conditions of Approval (if any):

BURLINGTON RESOURCES OIL & GAS COMPANY LP
OSWELL FEDERAL 100S, 1590' FSL & 1225' FWL
SECTION 4, T-29-N, R-11-W, NMPM, SAN JUAN COUNTY, NM
GROUND ELEVATION: 5830', DATE: MARCH 21, 2005

RESERVE PIT DICE TO BE 8' ABOVE DEEP SIDE (OVERFLOW - 5' WIDE AND 1' ABOVE SHALLOW SIDE).

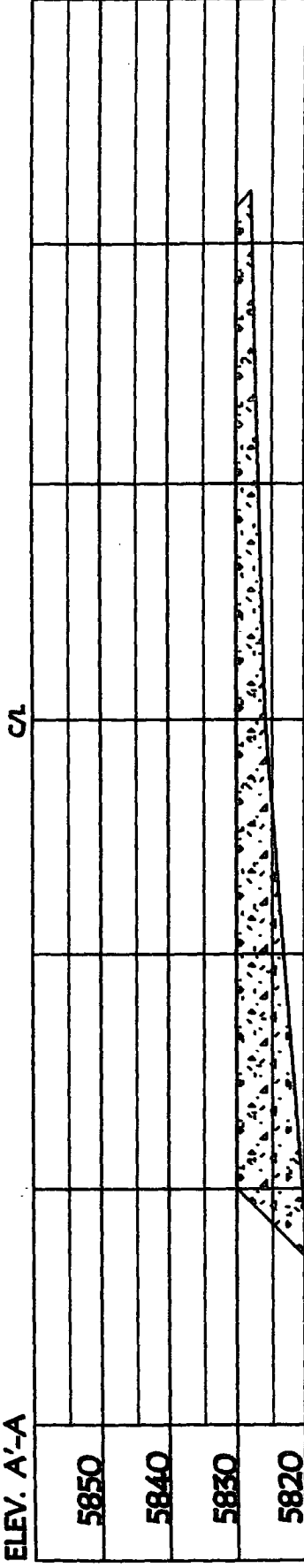
NOTE: VECTOR SURVEYS IS NOT LIABLE FOR UNDERGROUND UTILITIES OR PIPELINES.
CONTRACTOR SHOULD CALL ONE-CALL FOR LOCATION OF ANY MARKED OR UNMARKED BURIED
PIPELINES OR CABLES ON WELL PAD AND OR ACCESS ROAD AT LEAST TWO (2) WORKING DAYS PRIOR TO CONSTRUCTION.



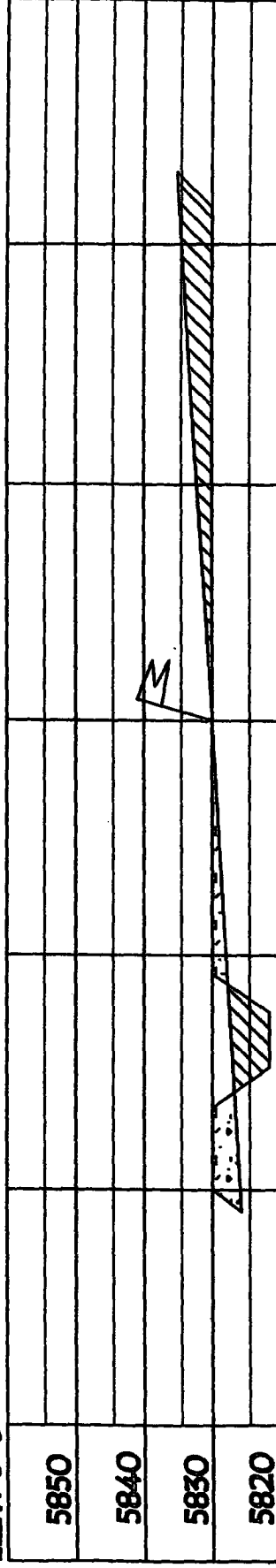
LATITUDE: 36° 45.1045' LONGITUDE: 108° 00.0711' NAD27

BURLINGTON RESOURCES OIL & GAS COMPANY LP
OSWELL FEDERAL 100S, 1590' FSL & 1225' FWL
SECTION 4, T-29-N, R-11-W, NMPM, SAN JUAN COUNTY, NM
GROUND ELEVATION: 5830'; DATE: MARCH 21, 2005

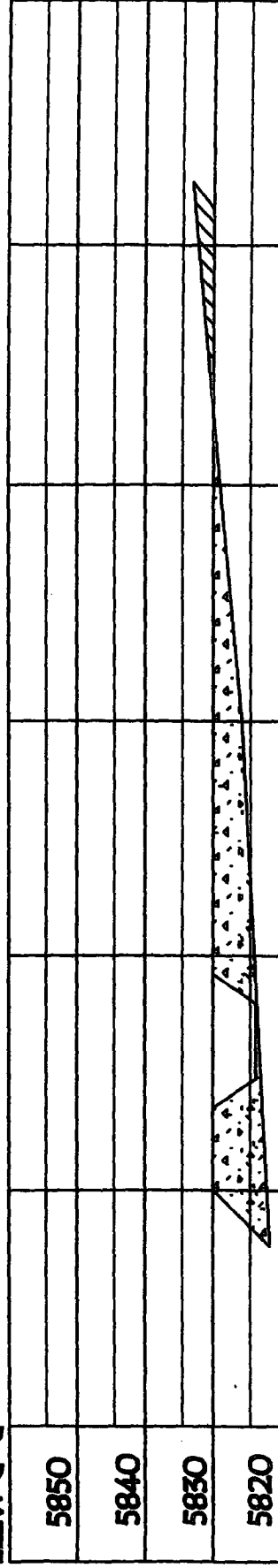
ELEV. A'-A



ELEV. B'-B



ELEV. C'-C



**NOTE: VECTOR SURVEYS IS NOT LIABLE FOR UNDERGROUND UTILITIES OR PIPELINES.
 CONTRACTOR SHOULD CALL ONE-CALL FOR LOCATION OF ANY MARKED OR UNMARKED BURIED
 PIPELINES OR CABLES ON WELL PAD AND OR ACCESS ROAD AT LEAST TWO (2) WORKING DAYS PRIOR TO CONSTRUCTION.**

OPERATIONS PLAN

Well Name: Oswell Federal #100S
Location: Unit L (NW/SW) 1590' FSL & 1225' FWL, Section 4, T29N, R11W
 San Juan County, New Mexico
 Latitude 36° 45.1045'N; Longitude 108° 00.0711'W
Formation: Basin Fruitland Coal
Elevation: 5830' GR

Formation:	Top	Bottom	Contents
Surface	San Jose		
Ojo Alamo	734'		
Kirtland	844'	1829'	gas
T/Fruitland	1829'		gas
B/Fruitland Coal	2044'		gas
Pictured Cliffs	2064'		
Total Depth	2244'		

Note: The Total Depth for this well is into the Pictured Cliffs interval, but currently only have plans to complete the Fruitland Coal interval. We could in the near future perforate/stimulate the Pictured Cliffs interval, but only would once Regulatory approval was asked for and received.

Logging Program: None

Mud Program:

Interval	Type	Weight	Vis. Fluid Loss
0- 120'	Spud	8.4-8.9	40-50 no control
120-2244'	Non-dispersed	8.4-9.5	30-60 no control

Casing Program:

Hole Size	Depth Interval	Csg.Size	Wt.	Grade
8 $\frac{3}{4}$ "	0 - 120'	7"	20.0#	J-55
6 $\frac{1}{4}$ "	0 - 2244'	4 1/2"	10.5#	J/K-55

Tubing Program:

0 - 2244'	2 3/8"	4.7#	J-55
-----------	--------	------	------

Float Equipment: 7" surface casing - guide shoe. Centralizers will be run in accordance with Onshore Order #2.

4 1/2" production casing - float shoe and float collar on bottom. Centralizers run every third joint above shoe to the base of the Ojo Alamo @ 844'. Two turbolizing type centralizers - one below and one into the base of the Ojo Alamo @ 844'. Standard centralizers thereafter every fourth joint up to the base of the surface pipe.

Wellhead Equipment: 7" x 4 1/2" x 2 3/8" x 11" 2000 psi xmas tree assembly.

April 12, 2005

Cementing:

7" surface casing Pre-Set Drilled - Cement with Type I, II cement with 20% flyash mixed at 14.5 ppg, 1.61 cu ft per sack yield. (Bring cement to surface). Wait on cement for 24 hours for pre-set holes before pressure testing or drilling out from under surface.

7" surface casing - Cement with 42 sx Type III cement with 0.25 pps Celloflake, 3% CaCl.
(54 cu ft of slurry @ 1.28 yield). 200% excess, bring cement to surface. Wait on cement for 8 hrs for conventionally set holes before pressure testing or drilling out from under surface.
WOC until cement establishes 250 psi compressive strength prior to NU of BOPE.

4 1/2" production casing - Cement with 104sx (221 cu ft of slurry @ 2.13 yield) Premium Lite with 3% calcium chloride, 5 pps LCM-1, and 1/4#/sack celloflake, 0.4% FL-52, & 0.4% SMS. Tail with 90 sacks (124 cu ft of slurry @ 1.38 yield) Type III cmt with 1% calcium chloride, 1/4#/sack Celloflake and 0.2% FL-52. Total of 345cf - 50% excess to circulate to surface.

BOP and tests:

Surface to TD - 11" 2000 psi (minimum double gate BOP stack (Reference Figure #1 and #2).
Prior to drilling out surface casing, test rams to 600 psi/30 min.

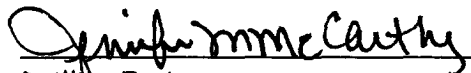
Completion - 6" 2000 psi (minimum) double gate BOP stack (Reference Figure #2). Prior to completion operations, test rams and casing to 1500 psi/30 min.

From surface to TD - choke manifold (Reference Figure #3).

Pipe rams will be actuated at least once each day and blind rams actuated once each trip to test proper functioning. An upper kelly cock valve with handle and drill string safety valves to fit each drill string will be maintained and available on the rig floor.

Additional information:

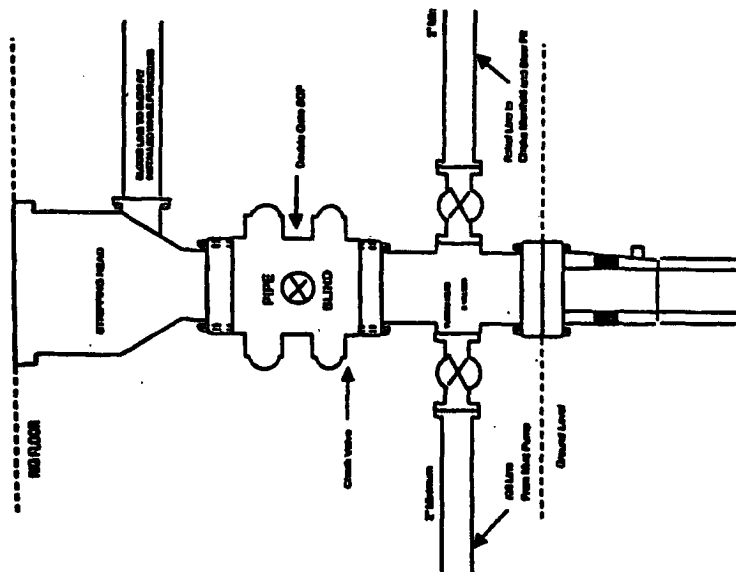
- * The Fruitland Coal formation will be completed.
- * Anticipated pore pressure for the Fruitland is between 600 - 700 psi.
- * This gas is dedicated.
- * The west half of the section is dedicated to Fruitland Coal and W/2 is dedicated to Fruitland Coal for this well.
- * New casing will be utilized.
- * Pipe movement (either rotation or reciprocation) will be done if hole conditions permit.


Drilling Engineer

4-19-05
Date

BURLINGTON RESOURCES

Completion/Workover Rig
BOP Configuration
2,000 psi System

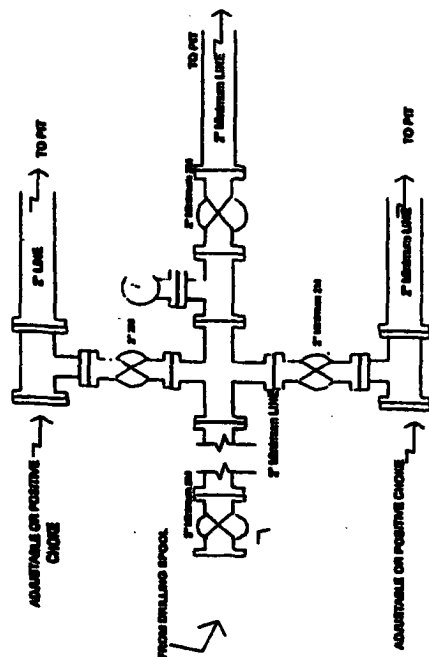


Minimum BOP Installation for all Completion/Workover Operations. 7-1/16" bore, 2000 psi minimum working pressure double gate BOP to be equipped with blind and pipe rams. A stripping head to be installed on the top of the BOP. All BOP equipment is 2000 psi working pressure or greater excluding 800 psi stripping head.

Figure #2

BURLINGTON RESOURCES

Drilling Rig
Choke Manifold Configuration
2000 psi System

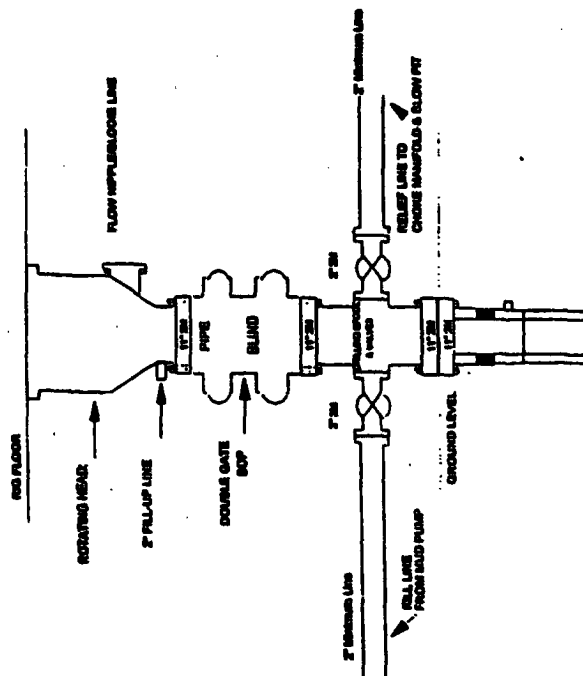


Choke manifold installation from Surface Casing Point to Total Depth. 2,000psi working pressure equipment with two chokes.

Figure #3

Burlington Resources

Drilling Rig
2000 psi System



BOP Installation from Surface Casing Point to Total Depth. 11" Bore 10" Porting, 2000 psi working pressure double gate BOP to be equipped with blind and pipe rams. All BOP equipment is 2,000 psi working pressure or greater. All BOP equipment is 2,000 psi working pressure or greater excluding 800 psi stripping head.

Figure #1