

UNITED STATES
DEPARTMENT OF THE INTERIOR
BUREAU OF LAND MANAGEMENT

APPLICATION FOR PERMIT TO DRILL, DEEPEN, OR PLUG BACK

2005 FEB 24 AM 11 11
RECEIVED
070 FARMINGTON NM

| | |
|--|---|
| 1a. Type of Work DRILL | 5. Lease Number SF-079049-A Unit Reporting Number |
| 1b. Type of Well GAS | 6. If Indian, All. or Tribe |
| 2. Operator BURLINGTON RESOURCES Oil & Gas Company | 7. Unit Agreement Name San Juan 28-6 Unit |
| 3. Address & Phone No. of Operator PO Box 4289, Farmington, NM 87499 (505) 326-9700 | 8. Farm or Lease Name San Juan 28-6 Unit 9. Well Number 115P |
| 4. Location of Well 2610' FSL, 1335' FWL Latitude 36° 36.1852'N, Longitude 107° 27.4688'W | 10. Field, Pool, Wildcat Blanco MV/Basin Dakota 11. Sec., Twn, Rge, Mer. (NMPM) Sec. 3, T-27-N, R-6-W API # 30-045-39-29478 |
| 14. Distance in Miles from Nearest Town Gobernador - 13 miles | 12. County Rio Arriba 13. State NM |
| 15. Distance from Proposed Location to Nearest Property or Lease Line 1335' | |
| 16. Acres in Lease | 17. Acres Assigned to Well S/2 320, W/2 320.84 |
| 18. Distance from Proposed Location to Nearest Well, Drlg, Compl, or Applied for on this Lease 1800' - DK | |
| 19. Proposed Depth 7836' | 20. Rotary or Cable Tools Rotary |
| 21. Elevations (DF, FT, GR, Etc.) 6641' GR | 22. Approx. Date Work will Start |
| 23. Proposed Casing and Cementing Program See Operations Plan attached | |
| 24. Authorized by: <u>Frances Bond</u> Regulatory Specialist | <u>2-23-05</u> Date |

PERMIT NO.

APPROVAL DATE

APPROVED BY

TITLE

DATE 6-23-05

Archaeological Report Attached

Threatened and Endangered Species Report Attached

NOTE: This format is issued in lieu of U.S. BLM Form 3160-3

Title 18 U.S.C. Section 1001, makes it a crime for any person knowingly and willfully to make to any department or agency of the United States any false, fictitious or fraudulent statements or presentations as to any matter within its jurisdiction.

NMOCD

District I
PO Box 1980, Hobbs, NM 88241-1980

State of New Mexico
Energy, Minerals & Natural Resources Department

Form C-102

Revised February 21, 1994

Instructions on back

Submit to Appropriate District Office

State Lease - 4 Copies

Fee Lease - 3 Copies

District II
PO Drawer DD, Artesia, NM 88211-0719

OIL CONSERVATION DIVISION
PO Box 2088
Santa Fe, NM 87504-2088

District III
1000 Rio Brazos Rd., Aztec, NM 87410

District IV
PO Box 2088, Santa Fe, NM 87504-2088

☐ AMENDED REPORT

WELL LOCATION AND ACREAGE DEDICATION PLAT

| | | |
|-------------------------------------|---|--|
| *API Number 30-039- 29478 | *Pool Code 72319/71599 | *Pool Name Blanco Mesaverde/Basin Dakota |
| *Property Code 7462 | *Property Name SAN JUAN 28-6 UNIT | *Well Number 115P |
| *OGRID No. 14538 | *Operator Name BURLINGTON RESOURCES OIL & GAS COMPANY, LP | *Elevation 6641' |

¹⁰ Surface Location

| UL or lot no. | Section | Township | Range | Lot Idn | Feet from the | North/South line | Feet from the | East/West line | County |
|---------------|---------|----------|-------|---------|---------------|------------------|---------------|----------------|------------|
| K | 3 | 27N | 6W | | 2610 | SOUTH | 1335 | WEST | RIO ARriba |

¹¹ Bottom Hole Location If Different From Surface

| UL or lot no. | Section | Township | Range | Lot Idn | Feet from the | North/South line | Feet from the | East/West line | County |
|---------------|---------|----------|-------|---------|---------------|------------------|---------------|----------------|--------|
| | | | | | | | | | |

| | | | |
|---|-------------------------------|----------------------------------|-------------------------|
| ¹² Dedicated Acres DK-320--S/2 MV-320.84-W/2 | ¹³ Joint or Infill | ¹⁴ Consolidation Code | ¹⁵ Order No. |
|---|-------------------------------|----------------------------------|-------------------------|

NO ALLOWABLE WILL BE ASSIGNED TO THIS COMPLETION UNTIL ALL INTERESTS HAVE BEEN CONSOLIDATED
OR A NON-STANDARD UNIT HAS BEEN APPROVED BY THE DIVISION

¹⁶

| | |
|--|---|
| | <p>¹⁷ OPERATOR CERTIFICATION</p> <p>I hereby certify that the information contained herein is true and complete to the best of my knowledge and belief.</p> <p><i>Frances Bond</i></p> <p>Signature</p> <p>Frances Bond</p> <p>Printed Name</p> <p>Regulatory Specialist</p> <p>Title</p> <p>Date</p> |
| | <p>¹⁸ SURVEYOR CERTIFICATION</p> <p>I hereby certify that the well location shown on this plat was plotted from field notes of actual surveys made by me or under my supervision, and that the same is true and correct to the best of my belief.</p> <p>Date of Survey: AUGUST 23, 2004</p> <p>Signature and Seal of Professional Surveyor</p> <p></p> <p>JASON C. EDWARDS</p> <p>Certificate Number 15269</p> |

OPERATIONS PLAN

Well Name: San Juan 28-6 Unit #115P

Location: 2610' FSL, 1335' FWL, Sec 03, T-27-N, R-6-W
Rio Arriba County, NM

Latitude 36° 36.1852'N, Longitude 107° 27.4688' W

Formation: Blanco Mesaverde/Basin Dakota

Total Depth: 7836

Logging Program: See San Juan 28-6 Unit Master Operations Plan

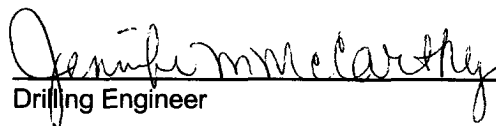
Mud Program: See San Juan 28-6 Unit Master Operations Plan

Casing Program (as listed, the equivalent, or better):

| Hole Size | Depth Interval | Csg | Wt. | Grade | Cement | | |
|-----------|----------------|------|--------|------------|--------|-----|-------|
| 12 1/4 | 0' - | 200 | 9.625" | 32.3# | H-40 | 188 | cu.ft |
| 8 3/4 | 0' - | 3623 | 7" | 20.0# | J-55 | 807 | cu.ft |
| 6 1/4 | 0' - | 7836 | 4.5" | 10.5/11.6# | J-55 | 574 | cu.ft |

Tubing Program: See San Juan 28-6 Unit Master Operations Plan

- * The Dakota and Mesaverde formations will be completed.
- * The south half of Section 3 is dedicated to the Dakota and the West half of section 3 is dedicated to the Mesaverde formation in this well.
- * Gas is dedicated.


Drilling Engineer

2-2-05
Date

*Assumption

Lewis 100

MULTI-POINT SURFACE USE PLAN

San Juan 28-6 Unit #115P

- * Anticipated pipeline facilities as shown on the attached plat from
- * 2100' of new road will be built.
- * Water supply from the San Juan 29-6 Water Well #1 in located in SW/4
- * Section 28, T-29-N, R-6-WNew Mexico.
- * Hauled top soil from road to location to use on reserved pits
- * Mow or Tree Stips
- * Line Pits
- * 3:1 slopes
- * Diversion ditch above cut slope draining to east
- * Archaeological Resources: See Archaeological Survey technical report # 2004-108
- * from Aztec Archaeological Consultants, LLC

Frances Bend

Regulatory Specialist

2-23-05

Date

District I

1625 N. French Dr., Hobbs, NM 88240

District II

1301 W. Grand Ave., Artesia, NM 88210

District III

1000 Rio Brazos Rd., Aztec, NM 87410

District IV

1220 S. St. Francis Dr., Santa Fe, NM 87505

OIL CONSERVATION DIVISION

1220 South St. Francis Dr.

Santa Fe, NM 87505

WELL API NO.

30-039-

5. Indicate Type of Lease

STATE ☐

FEE ☐

6. State Oil & Gas Lease No.

SF-079049-A

7. Lease Name or Unit Agreement Name

San Juan 28-6 Unit

8. Well Number

115P

9. OGRID Number

14538

10. Pool name or Wildcat

Blanco Mesaverde/Basin Dakota

SUNDRY NOTICES AND REPORTS ON WELLS
(DO NOT USE THIS FORM FOR PROPOSALS TO DRILL OR TO DEEPEN OR PLUG BACK TO A DIFFERENT RESERVOIR. USE "APPLICATION FOR PERMIT" (FORM C-101) FOR SUCH PROPOSALS.)

1. Type of Well:

Oil Well ☐

Gas Well ☒

Other

2. Name of Operator

BURLINGTON RESOURCES OIL & GAS COMPANY LP

3. Address of Operator

3401 E. 30TH STREET, FARMINGTON, NM 87402

4. Well Location

Unit Letter K : 2610' feet from the South line and 1335 feet from the West line
Section 3 Township 27N Range 6W NMPM County Rio Arriba

11. Elevation (Show whether DR, RKB, RT, GR, etc.)

Pit or Below-grade Tank Application

or Closure ☐

Pit type

New Drill

Depth to Groundwater

>100'

Distance from nearest fresh water well

>1000'

Distance from nearest surface water

<1000'

Pit Liner Thickness:

12

mil

Below-Grade Tank:

Volume

bbls;

Construction Material

12. Check Appropriate Box to Indicate Nature of Notice, Report or Other Data

NOTICE OF INTENTION TO:

PERFORM REMEDIAL WORK ☐

TEMPORARILY ABANDON ☐

PULL OR ALTER CASING ☐

PLUG AND ABANDON ☐

CHANGE PLANS ☐

MULTIPLE COMPL ☐

OTHER:

New Drill

☒

SUBSEQUENT REPORT OF:

REMEDIAL WORK ☐

COMMENCE DRILLING OPNS. ☐

CASING/CEMENT JOB ☐

ALTERING CASING ☐

P AND A ☐

OTHER: ☐

13. Describe proposed or completed operations. (Clearly state all pertinent details, and give pertinent dates, including estimated date of starting any proposed work). SEE RULE 1103. For Multiple Completions: Attach wellbore diagram of proposed completion or recompletion.

Burlington Resources proposes to construct a new drilling pit and an associated blow/flare pit. Based on Burlington's interpretation of the Ecosphere's risk ranking criteria, the new drilling pit will be a lined pit as detailed in Burlington's Revised Drilling / Workover Pit Construction / Operation Procedures dated November 11, 2004 on file at the NMOCD office. A portion of the blow/flare pit will be designed to manage fluids and that portion will be lined as per the risk ranking criteria. Burlington Resources anticipates closing these pits according to the Drilling / Workover Pit Closure Procedure dated August 2, 2004 on file at the NMOCD office.

I hereby certify that the information above is true and complete to the best of my knowledge and belief. I further certify that any pit or below-grade tank has been/will be constructed or closed according to NMOCD guidelines ☐, a general permit ☒ or an (attached) alternative OCD-approved plan ☐.

SIGNATURE Frances Bond TITLE Regulatory Specialist DATE 02/01/2005

Type or print name
For State Use Only

Frances Bond

E-mail address:

fbond@br-inc.com

Telephone No.

505-326-9847

APPROVED BY

TITLE

DEPUTY OIL & GAS INSPECTOR, DIST. I

DATE

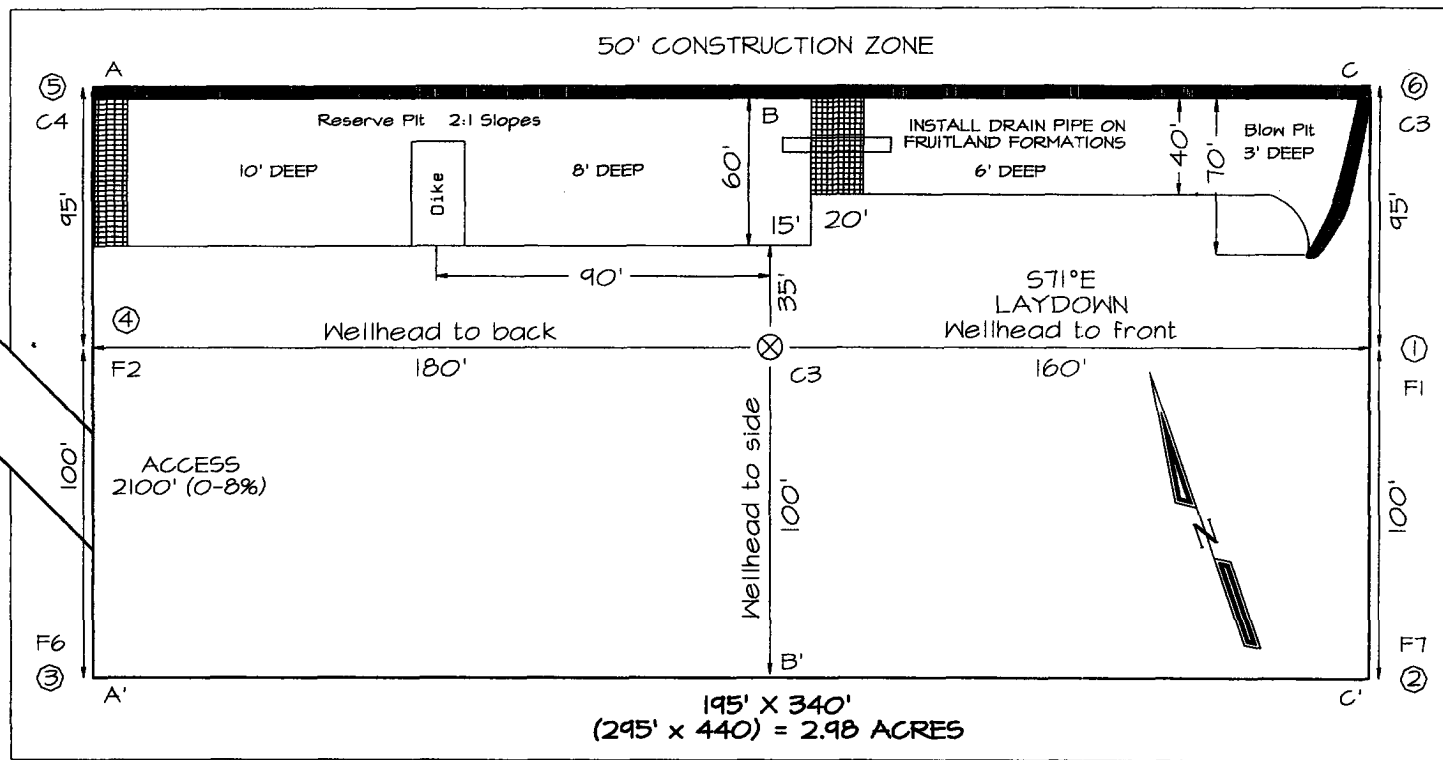
Conditions of Approval (if any):

JUN 24 2005

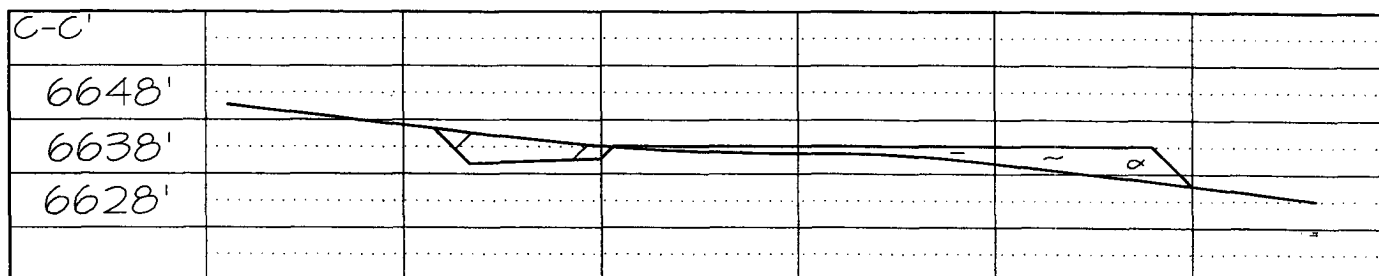
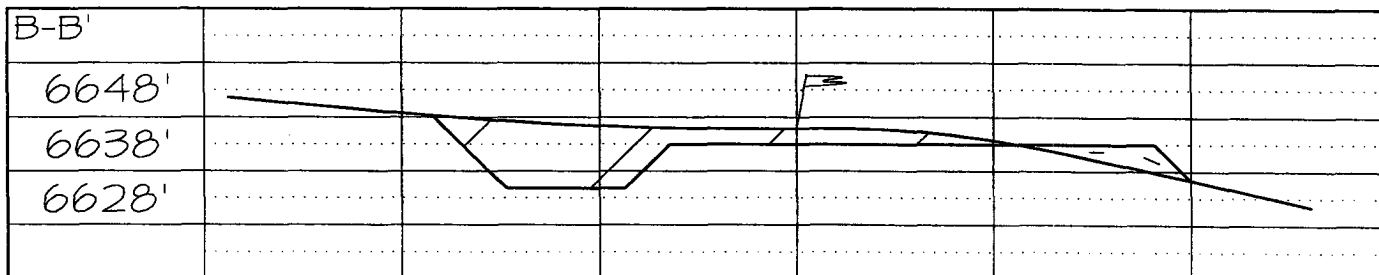
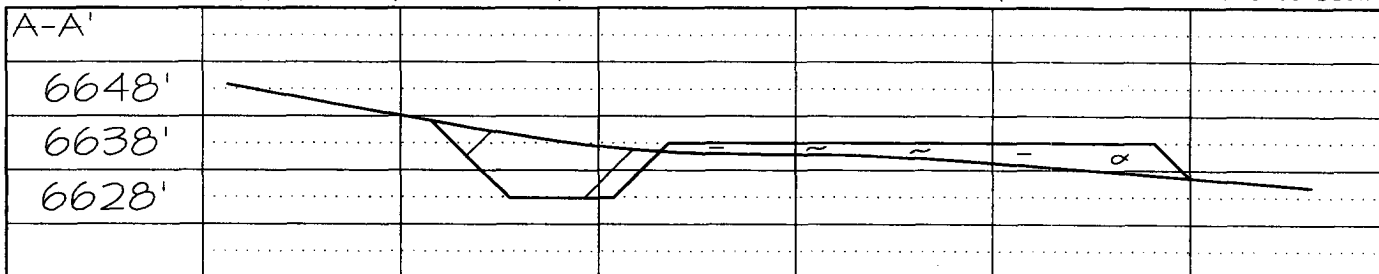
PLAT #1

BURLINGTON RESOURCES OIL & GAS COMPANY, LP
SAN JUAN 28-6 UNIT #115P, 2610' FSL & 1335' FWL
SECTION 3, T27N, R6W, NMPM, RIO ARriba COUNTY, NM
GROUND ELEVATION: 6641' DATE: DECEMBER 8, 2004

LATITUDE: 36°36'11"
LONGITUDE: 107°27'28"
 DATUM: NAD1927



Reserve Pit DiKE: to be 8' above Deep side (overflow - 3' wide and 1' above shallow side).
 Blow Pit: overflow pipe halfway between top and bottom and to extend over plastic liner and into blow pit.



Note: Contractor should call One-Call for location of any marked or unmarked buried pipelines or cables on well pad and/or access road at least two (2) working days prior to construction