

UNITED STATES
DEPARTMENT OF THE INTERIOR
BUREAU OF LAND MANAGEMENT

SUNDRY NOTICES AND REPORTS ON WELLS

Do not use this form for proposals to drill or to deepen or reentry to a different reservoir.
Use "APPLICATION FOR PERMIT---" for such proposals

SUBMIT IN TRIPLICATE

1. Type of Well

☐ Oil ☒ Gas ☐ Other

2. Name of Operator

Roddy Production Company, Inc.

3. Address and Telephone No.

P.O. Box 2221, Farmington NM 87499 (505) 325-5750

4. Location of Well (Footage, Sec., T., R., M., or Survey Description)

Surface location; 1674' FNL x 1001' FEL, Section 17, T28N, R11W

FORM APPROVED
Budget Bureau No. 1004-0135
Expires: March 31, 1993

5. Lease Designation and Serial No.

NM10063 010063

6. If Indian, Allottee or Tribe Name

N/A

7. If Unit or CA, Agreement Designation

8. Well Name and No.

Lucerne Federal 8

9. API Well No.

30-045-32855

10. Field and Pool, or Exploratory Area

W. Kutz Pictured Cliffs/Fruitland Coal

11. County or Parish, State

San Juan County, New Mexico

12. CHECK APPROPRIATE BOX(es) TO INDICATE NATURE OF NOTICE, REPORT, OR OTHER DATA

TYPE OF SUBMISSION

☐ Notice of Intent

☒ Subsequent Report

☐ Final Abandonment Notice

TYPE OF ACTION

☐ Abandonment

☐ Recompletion

☐ Plugging Back

☐ Casing Repair

☐ Altering Casing

☒ Other completion

☐ Change of Plans

☐ New Construction

☐ Non-Routine Fracturing

☐ Water Shut-Off

☐ Conversion to Injection

☐ Dispose Water

(Note: Report results of multiple completion on Well Completion or Recompletion Report and Log form.)

13. Describe Proposed or Completed Operations (Clearly state all pertinent details, and give pertinent dates, including estimated date of starting any proposed work. If well is directionally drilled, give subsurface locations and measured and true vertical depth for all markers and zones pertinent to this work.)*

Roddy Production has isolated the Pictured Cliffs zone with a bridge plug. The Fruitland Coal has been completed. Co-mingling will occur at a later date, after the pipeline has been constructed and the Fruitland Coal has established a stable production curve for allocation purposes. The completion reports and well bore diagram are attached.

14. I hereby certify that the foregoing is true and correct

Signed Robert R. Griffie
Robert R. Griffie

Title Operations Manager
agent for Roddy Production

Date 6/29/05

ACCEPTED FOR RECORD

(This space for Federal or State office use)

Approved by _____
Conditions of approval, if any:

Title _____

Date _____

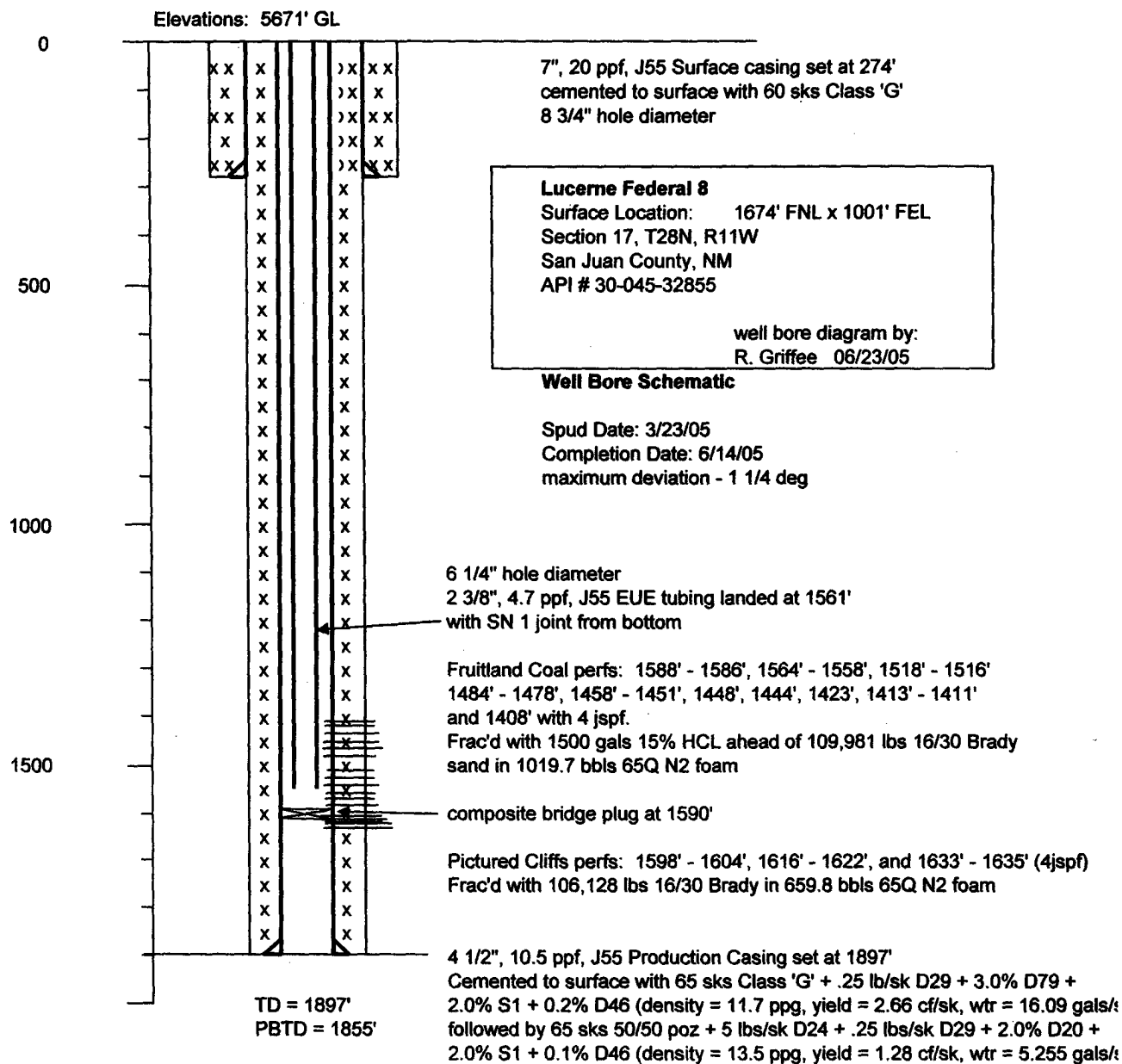
JUN 29 2005

FARMINGTON FIELD OFFICE

BY AB

Title 18 U.S.C. Section 1001, makes it a crime for any person knowingly and willfully to make to any department or agency of the United States any false, fictitious or fraudulent statements or representations as to any matter within its jurisdiction.

*See Instruction on Reverse Side



Roddy Production Inc. Co.
Lucerne # 8

Completion Reports

4/14/05

MIRU Pro Well Service Rig 2. Tighten well head, NU ball valves to well head. PU scraper and 2 3/8" tubing. TIH and tag at 1852'. TOH. Secure well SDFN.

4/15/05

Travel to location. SICP - 0 psi. Pressure test casing to 500 psi, good test. RU BlueJet and run CBL from PBTD to surface. TIH open ended to 1640'. RU Schlumberger. Pressure casing under pipe rams to 3000 psi and lines to 2000 psi, good test. Spot 250 gals 7 1/2% HCL over perforation interval. RD Schlumberger. TOH. Perforate from 1598' - 1604', 1616' - 1622', and 1633' - 1635' with 4 jspf. RD Blue Jet. Secure well. SDFN.

4/16/05

MIRU Stinger and Schlumberger. Hold safety meeting. Frac with 106,1280 lbs of 16/30 Brady sand in 659.8 bbls of 65Q N2 foam. ISIP - 970 psi. RD Schlumberger and Stinger. RU well to flow to tank. Open well on 1/8" choke at 600 psi. Flow back overnight.

4/17/05

Flow back well on 1/8" choke. 9:00 p.m. - 610 psi, making frac foam. Choke kept plugging off from 12:00a.m.- 3:00a.m. Change out choke to 1/4". Opened up at 200 psi, 8:00a.m. - 140 psi., 10:a.m. - 70psi, 11:00a.m. - 20 psi., 12:00p.m. - 5psi., 1:00p.m. - 0 psi. Shut in well. Made a total of 43 bbls of frac fluid. Will clean out in the a.m.

4/18/05

Travel to location. SICP - 100 psi. Open well on 1/4" choke, made heavy foam, lost pressure in 2 hrs. TIH with notched collar. Tag fill at 1750'. Clean out with air/mist using 3-5 bbls p/hr and sweeps. Made heavy sand. Clean out to PBTD of 1851'. TOH above perforations. Secure well, and SDFN.

4/19/05

Travel to location, SIPC - 25 psi. Bleed well down. TIH and tag 5' fill. Unload well with air package at 500 psi. Well is logged off with water, returns were frac fluid. Cleaning out with 3 bbl/hr mist, sweeps did not bring out more fluid. Well produced fluid while pumping a low volume of air without mist. TOH above perfs. Natural flow 1 hr. TIH and tag, no fill. Total of 30 bbls returned. Land 2 3/8" tubing at 1640' RKB, with SN one joint from bottom. ND BOPE, NU well head. RD equipment, did not RD unit due to high winds. Secure well SDFN. Will RDMO in the a.m. and move to the Lucerne 10.

4/20/05

SICP - 90 psi, SITP - 65. Moved Pro Well Service Rig 2 to Lucerne 10. Well bled down quickly. NU air package to tbg. Unload well 4 times, total of 13 bbls of frac fluid recovered. Secure well SDFN. Note rig is not on location. Will attempt to unload well in the a.m.

4/21/05

SICP - 90 psi, SITP - 65 psi. Bled down well. Using dry air only, recovered 30 bbls total frac fluid. Well try again in the a.m.

5/3/05

Return to Lucerne Federal # 8 to clean out. MIRU unit, air package and flow back tank. ND well head, NU BOPE. Pull tbg hanger. NU and unload well, made 2 bbls heavy on the soap form pumper soap sticks. Secure well SDFN.

5/4/05

Travel to location. SICP - 40 psi. SITP - 20 psi. TIH and tag 2' fill. Unload and clean out with 2-3 bbls mist at low volume. Dry up and pull up above perforations. Flow 3 hr. and made 24 bbls out of csg. TIH, tag no fill, unload with low volume, made 6 bbls. TOH to 1630'. RU to flow out of tbg. Shut in csg pressure up to 50 psi in 10 min. Unloading at 85 psi. From 6:30 p.m. to 9:00p.m. made 8 bbls. Csg pressure - 65 psi. Total for the day 61 bbls recovered. Air hand used 5 bbls to clean out sand. Secure well and flow back to the A.M.

5/5/05

Travel to location. Well made 35 bbls over night. Shut in csg pressure builds up to 100 psi in 60 min. Help well unload 2x using low volume of air. Total 40 bbls. Some sand, signs of formation. Secure well SDFN. RDMO in the A.M. Will move to the Lucerne 9.

5/6/05

Travel to location. SICP - 115 psi, SITP - 30 psi. Bleed down and land 2 3/8" Tbg at 1600'. RDMO. Secure well. Move to Lucerne 9.

5/18/05

MIRU Pro Well Service. TIH and tag PBTD at 1856 rkb, no fill. TOH and SLM. Secure well, SDFN. 5/19/05 will be a stand by day for crew. Will spot acid, perforate, and lay down 2 3/8' pipe on float Friday.

5/19/05

Stand by Day

5/20/05

Travel to location. RU wireline set composite bridge plug at 1590', RD. Pressure test to 3,000 psi, good test. TIH to 1,590', RU to spot 250 gals of 7 1/2 % HCL. LD 2 3/8" tbg on float. RU Blue Jet and perforate basal coal shooting 4 jspf 1586'-1587, 1564'-1558', 1518'- 1516', 1484' - 1478', 1458'- 1451', 1448', 1444', 1423', 1413' - 1411', and 1408'. RDMO, to Lucerne Fed # 11. Secure Well SDFN. This well is scheduled to be frac'd 5/30/05

5/30/05

Frac Day, Rigless

MIRU Stinger and Schlumberger. Hold safety meeting. Frac by bullheading 1,500 gals 15% HCL followed by 110,000 lbs. 16/30 Brady sand in 65 Q N2 foam. RD Schlumberger and Stinger. ISIP 1050 psi. Flow back overnight.

5/31/05

Flow well back overnight. ISIP - 1100 psi, open with 820 psi on 1/4" choke at 4:00 p.m. 5/30/05. At 8:00 p.m. - 390 psi, 12:00 a.m. - 150 psi, 7:00 a.m. - 78 psi, 10:00 a.m. change to 1/2" choke - 120 psi, 3:00 p.m. - 20 psi, 4:00 p.m. open up on 2" line - 50 psi, 9:00 p.m. - 5 psi, making foam and fluid. Flowing in to pit. Recovered 40-50 bbls of frac fluid.

6/1/05

7:00 a.m. on ¼" choke - 78 psi, making foam and fluid. 12:00 p.m. on ½" choke - 50 psi, making foam and fluid. 3:00 p.m. - 6 psi. 6:00 p.m., open to 2" line with 2 psi, surging foam. 9:00 p.m. making heavy foam and no fluid. 6/1/05 12:00 a.m. - 3 psi, making foam. 3:00 a.m. - 2 psi making foam. 5:00 a.m., shut in well. Open at 6:00 a.m. with 60 psi. 8:00 a.m. - 30 psi no returns. Bleed down. Shut in and secure well SDFN.

6/10/05

MIRU Pro Well Service. Return to clean out Fruitland Coal frac or 5/30/05. SICP - 130 psi. ND frac valve, NU BOPE. PU 2 3/8" Tbg. TIH and tag fill at 1585', Composite plug at 1590', perforations at 1587' - 1408'. TOH 3 stds. Secure well, SDFN.

6/13/05

SICP - 85 psi. Bleed well down. TIH and tag 5' of fill. Unload frac fluid with air. Clean out with mist. Dry well up and POOH with 3 stands. Natural flow up casing for 4 hours. Secure well and SDFN. Note: porta-potty and trailer were stolen over the weekend. Will use dry-watchman on location.

6/14/05

SICP - 110 psi. TIH and tag 3 to 5' of fill. Unload with air, clean out using low volume, 1-2 bbls. Dry up well. Pull up and natural flow for 2 hrs. Added 2" check valve to flow line, well did not stop flowing. Flow back over night with flow back crew. Recovered 35 bbls for the day, very lite sand. Will RDMO in the a.m. to E-3r.

6/15/05

Flow back recovered 44 bbls. TIH tag no fill. Land Tbg at 1560'. RDMO. Secure well.