

Submit 3 Copies To Appropriate District Office

District I

1625 N. French Dr., Hobbs, NM 88240

District II

1301 W. Grand Ave., Artesia, NM 88210

District III

1000 Rio Brazos Rd., Aztec, NM 87410

District IV

1220 S. St. Francis Dr., Santa Fe, NM 87505

State of New Mexico
Energy, Minerals and Natural Resources

OIL CONSERVATION DIVISION
1220 South St. Francis Dr.
Santa Fe, NM 87505

Form C-103

May 27, 2004

WELL API NO.

30-039-20026

5. Indicate Type of Lease

STATE ☐ FEE ☒

6. State Oil & Gas Lease No.

SUNDRY NOTICES AND REPORTS ON WELLS

(DO NOT USE THIS FORM FOR PROPOSALS TO DRILL OR TO DEEPEN OR PLUG BACK TO A DIFFERENT RESERVOIR. USE "APPLICATION FOR PERMIT" (FORM C-101) FOR SUCH PROPOSALS.)

1. Type of Well: Oil Well ☐ Gas Well ☒ Other

2. Name of Operator

Burlington Resources Oil & Gas Company LP

3. Address of Operator

3401 E. 30th Street, Farmington, NM 87402

4. Well Location

Unit Letter L : 1650 feet from the South line and 800 feet from the West line

Section 21

Township 28N

Range 5W

NMPM

County Rio Arriba

11. Elevation (Show whether DR, RKB, RT, GR, etc.)

Pit or Below-grade Tank Application ☐ or Closure ☐

Pit type _____ Depth to Groundwater _____ Distance from nearest fresh water well _____ Distance from nearest surface water _____

Pit Liner Thickness: _____ mil Below-Grade Tank: Volume _____ bbls; Construction Material _____

12. Check Appropriate Box to Indicate Nature of Notice, Report or Other Data

NOTICE OF INTENTION TO:

PERFORM REMEDIAL WORK ☐ PLUG AND ABANDON ☒
TEMPORARILY ABANDON ☐ CHANGE PLANS ☐
PULL OR ALTER CASING ☐ MULTIPLE COMPL ☐

OTHER: ☐

SUBSEQUENT REPORT OF:

REMEDIAL WORK ☐ ALTERING CASING ☐
COMMENCE DRILLING OPNS. ☐ P AND A ☐
CASING/CEMENT JOB ☐

OTHER: ☐

13. Describe proposed or completed operations. (Clearly state all pertinent details, and give pertinent dates, including estimated date of starting any proposed work). SEE RULE 1103. For Multiple Completions: Attach wellbore diagram of proposed completion or recompletion.

The subject well failed the MIT when we were attempting to TA the. 6/10/05 contacted Charlie Perrin w/ the OCD and received verbal approval to P&A the subject well per the attached procedure.

I hereby certify that the information above is true and complete to the best of my knowledge and belief. I further certify that any pit or below-grade tank has been/will be constructed or closed according to NMOCD guidelines ☐, a general permit ☐ or an (attached) alternative OCD-approved plan ☐.

SIGNATURE Philana Thompson TITLE Regulatory Associate II DATE 6/24/05

Type or print name Philana Thompson

E-mail address: PTHompson@br-inc.com

Telephone No. 505-326-9530

For State Use Only

APPROVED BY: H. Villanueva

TITLE DEPUTY OIL & GAS INSPECTOR, DIST. 28

JUN 28 2005
DATE

Conditions of Approval (if any):

This is intent - Well has been plugged.
As per explanation Above

San Juan 28-5 #67

Plug and Abandon

1650' S, 800' W

L-21-28N-05W

Rio Arriba County, NM

LAT: 36 deg 38.65 LONG: 107 deg 22.25'

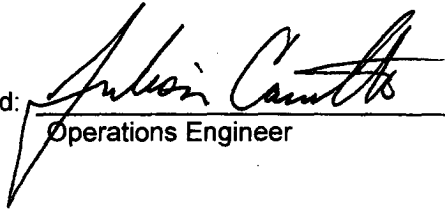
GL =6,645' KB=6,657'

AIN: 5164901

Scope: It is intended to plug and abandon this wellbore after the well failed a mechanical integrity test. The Dakota through Mesaverde plugs are currently in place.

1. **Plug #4 (Pictured Cliffs and Fruitland Coal tops, 3558' – 3145')**: Mix 32 sxs Type III cement and spot a balanced plug inside casing to cover Pictured Cliffs and Fruitland Coal tops. PU to 2650'. WOC and tag plug. Spot additional cement as necessary.
2. **Plug #5 (Kirtland and Ojo Alamo tops, 2998' – 2646')**: Mix 34 sxs Type III cement with 2% CaCl_2 (excess due to existing casing leak) and spot a balanced plug inside casing to cover the Kirtland and Ojo Alamo tops. PU to 2500'. WOC and tag plug. Spot additional cement as necessary.
3. Pressure test casing to 500 psi. PU to 1535'.
4. **Plug #6 (Nacimiento top, 1435' – 1535')**: Mix 10 sxs Type III cement and spot a balanced plug inside casing to cover the Nacimiento top. PU to 372'.
5. **Plug #7 (Surface, 372' – Surface)**: Mix 29 sxs Type III cement and spot a balanced plug inside casing to cover the 9 5/8" shoe and have cement to surface.
6. ND BOP and cut off casing below surface casing flange. Fill up 4 1/2" x 9 5/8" annulus (TOC at 55') with 8 sxs Type III cement. Install P&A marker with cement to comply with regulations. RD, move off location, cut off anchors and restore location.

Recommended:


Operations Engineer

Approved:


Sr. Rig Supervisor

Sundry Required: YES

Operations Engineer: Julian Carrillo
Foreman: Ken Johnson
Lease Operator: Gerald Reeves
Specialist: Joe Becker

Office: 599-4043 Cell: 320-0321
Office: 326-9819 Cell: 320-2567
Cell: 320-9418 Pager: 326-7273
Cell: 320-2548 Pager: 326-7059

San Juan 28-5 #67

1650' FSL, 800' FWL
Unit L, Section 21, T28N, R05W
Rio Arriba County, NM

LAT: 36 deg 30.63' min

LONG: 107 deg 22.21' min

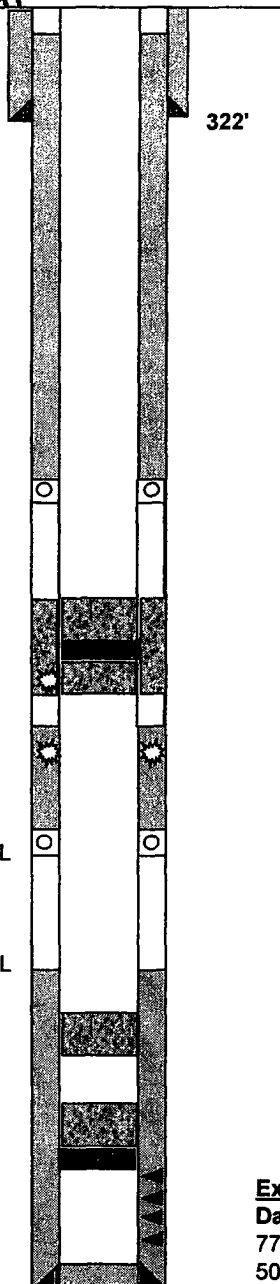
GL = 6,645'

KB= 6,657'

Proposed Wellbore Diagram

Surface Casing:

9-5/8" 32.3#
Set @ 322'
TOC @ circ to surf



Nacimiento	2,696'
Ojo Alamo	2,796'
Kirtland	2,948'
Fruitland	3,283'
Pictured Cliffs	3,508'
Heur Bent.	4,112'
Cliffhouse	5,160'
Menefee	5,334'
Point Lookout	5,659'
Mancos	6,208'
Gallup	6,860'
Greenhorn	7,610'
Graneros	7,670'
Two Wells	7,718'

DVT 2: 3,697' 170 sxs TOC @ 55' CBL

Plug #3 Mesaverde 5210' - 5110': Perforate at 5210',
cement retainer set at 5160' with 44 sxs. 34 sxs below
retainer and 10 sxs above retainer

DVT 1: 5,903' 170 sxs TOC @ 5474' CBL

TOC @ 6492' CBL

Plug #2 Gallup 6910' - 6810': Inside plug with 10 sxs
cement

Plug #1 Dakota 7668' - 7568': CIBP set at 7668' with 10
sxs cement on top

Production Casing:

4-1/2" 10.5#/11.6# J-55.
Set: 8,010'
11.6# to 6750'

Existing Stimulation:

Dakota
7720' - 7920'
50000# sand, 49000gals water

PBTD= 7,975'
TD= 8,010'

San Juan 28-5 #67

1650' FSL, 800' FWL
Unit L, Section 21, T28N, R05W
Rio Arriba County, NM

LAT: 36 deg 30.63' min

LONG: 107 deg 22.21' min

GL = 6,645'

KB= 6,657'

Proposed Wellbore Diagram

Surface Casing:

9-5/8" 32.3#

Set @ 322'

TOC @ circ to surf

Plug #7 Surface 372'-surface: Inside plug with 29 sxs
Type 3 cement. Fill top 55' of the bradenhead.

Plug #6 Nacimiento 1435'-1535': Inside plug with 10 sxs
type 3 cement

Plug #5 KT/OA 2998'-2646': Inside plug with 34 sxs Type
3 cement with 2% CaCl2

Plug #4 PC/FTC 3558'-3145': Inside plug with 32 sxs
Type 3 cement

DVT 2: 3,697' 170 sxs TOC @ 55' CBL

Plug #3 Mesaverde 5210' - 5110': Perforate at 5210',
cement retainer set at 5160' with 44 sxs. 34 sxs below
retainer and 10 sxs above retainer

DVT 1: 5,903' 170 sxs TOC @ 5474' CBL

TOC @ 6492' CBL

Plug #2 Gallup 6910' -6810': Inside plug with 10 sxs
cement

Plug #1 Dakota 7668' - 7568': CIBP set at 7668' with 10
sxs cement on top

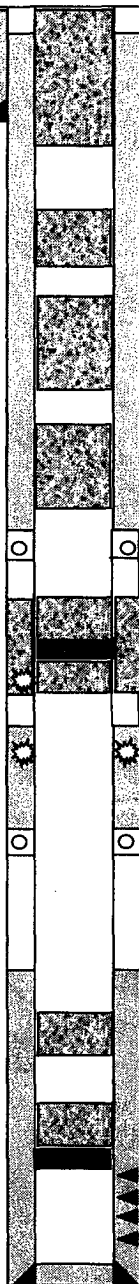
Production Casing:

4-1/2" 10.5#/11.6# J-55

Set: 8,010'

11.6# to 6750'

8,010'



Nacimiento	1,485'
Ojo Alamo	2,706'
Kirtland	2,948'
Fruitland	3,195'
Pictured Cliffs	3,508'
Heur Bent.	4,112'
Cliffhouse	5,160'
Menefee	5,334'
Point Lookout	5,659'
Mancos	6,208'
Gallup	6,860'
Greenhorn	7,610'
Graneros	7,670'
Two Wells	7,718'

Casing leaks from 2700'-2833'

Existing Stimulation:

Dakota

7720' - 7920'

50000# sand, 49000gals water

PBTD= 7,975'

TD= 8,010'