

Submit 3 Copies to Appropriate District Office  
District I  
1625 N. French Dr., Hobbs, NM 88240  
District II  
1301 W. Grand Ave., Artesia, NM 88210  
District III  
1000 Rio Brazos Rd., Aztec, NM 87410  
District IV  
1220 S. St. Francis Dr., Santa Fe, NM 87505

State of New Mexico  
Energy, Minerals and Natural Resources

Form C-103  
May 27, 2004

OIL CONSERVATION DIVISION  
1220 South St. Francis Dr.  
Santa Fe, NM 87505

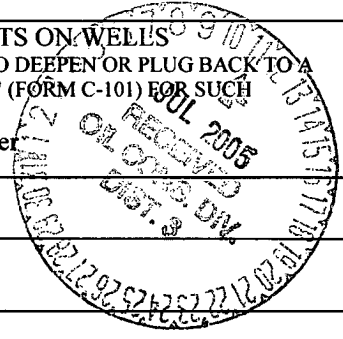
WELL API NO. <b>30-045-09601</b>
5. Indicate Type of Lease STATE <input type="checkbox"/> FEE <input type="checkbox"/>
6. State Oil & Gas Lease No.
7. Lease Name or Unit Agreement Name <b>Storey B LS</b> <b>(filed with BLM SF-078138-A)</b>
8. Well Number <b>5</b>
9. OGRID Number <b>000778</b>
10. Pool name or Wildcat <b>Azteck PC &amp; Basin Fruitland Coal</b>

**SUNDRY NOTICES AND REPORTS ON WELLS**  
(DO NOT USE THIS FORM FOR PROPOSALS TO DRILL OR TO DEEPEN OR PLUG BACK TO A DIFFERENT RESERVOIR. USE "APPLICATION FOR PERMIT" (FORM C-101) FOR SUCH PROPOSALS.)

1. Type of Well: Oil Well ☐ Gas Well ☒ Other ☐

2. Name of Operator  
**BP AMERICA PRODUCTION COMPANY**

3. Address of Operator  
**P.O. BOX 3092 HOUSTON, TX 77079-2064**



4. Well Location  
Unit Letter **O** : **800** feet from the **South** line and **1800** feet from the **East** line  
Section **11** Township **30N** Range **11W** NMPM **SAN JUAN** County

11. Elevation (Show whether DR, RKB, RT, GR, etc.)  
**5862'**

Pit or Below-grade Tank Application ☒ or Closure ☐  
Pit type Workover Depth to Groundwater >100' Distance from nearest fresh water well >1000' Distance from nearest surface water >1000'  
Pit Liner Thickness: 12 mil Below-Grade Tank: Volume \_\_\_\_\_ bbls; Construction Material \_\_\_\_\_

12. Check Appropriate Box to Indicate Nature of Notice, Report or Other Data

<b>NOTICE OF INTENTION TO:</b>		<b>SUBSEQUENT REPORT OF:</b>	
PERFORM REMEDIAL WORK <input type="checkbox"/>	PLUG AND ABANDON <input type="checkbox"/>	REMEDIAL WORK <input type="checkbox"/>	ALTERING CASING <input type="checkbox"/>
TEMPORARILY ABANDON <input type="checkbox"/>	CHANGE PLANS <input type="checkbox"/>	COMMENCE DRILLING OPNS. <input type="checkbox"/>	P AND A <input type="checkbox"/>
PULL OR ALTER CASING <input type="checkbox"/>	MULTIPLE COMPL <input type="checkbox"/>	CASING/CEMENT JOB <input type="checkbox"/>	
OTHER <b>Recompletion &amp; DHC - Pit Permit</b> <input checked="" type="checkbox"/>		OTHER: <input type="checkbox"/>	

13. Describe proposed or completed operations. (Clearly state all pertinent details, and give pertinent dates, including estimated date of starting any proposed work). SEE RULE 1103. For Multiple Completions: Attach wellbore diagram of proposed completion or recompletion.

BP America Production Company requests permission to recomplete the subject well into the Basin Fruitland Coal and commingling production Downhole with the existing Aztec Pictures Cliffs as per the attached procedure.

Construct a lined workover pit per BP America - San Juan Basin Drilling/ Workover Pit Construction Plan issued date of 11/17/2004. Pit will be closed according to closure plan on file.

I hereby certify that the information above is true and complete to the best of my knowledge and belief. I further certify that any pit or below-grade tank has been/will be constructed or closed according to NMOCD guidelines ☒, a general permit ☐ or an (attached) alternative OCD-approved plan ☐.

SIGNATURE Cherry Hlava TITLE Regulatory Analyst DATE 07/05/2005

Type or print name Cherry Hlava E-mail address: hlavacl@bp.com Telephone No. 281-366-4081

**For State Use Only**

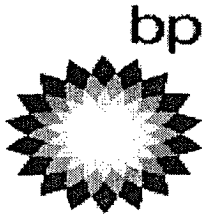
APPROVED BY: [Signature] TITLE DEPUTY OIL & GAS INSPECTOR, DIST. 4 DATE JUL 11 2005  
Conditions of Approval (if any): \_\_\_\_\_

**Storey B LS 5**  
**30-045-09601**  
**Downhole Commingling**

The Aztec Pictured Cliffs (71280) and Basin Fruitland Coal Pools are Pre-Approved Pools for Downhole Commingling per MNOC order R-11363. The working and overriding royalty interest owners in the proposed commingled pools are identical therefore no further notification of this application is required.

Production is proposed to be allocated based on the subtraction method using the projected future decline for production from the Aztec Pictured Cliffs. That production shall serve as a base for production subtracted from the total production for the commingled well. The balance of the production will be attributed to the Basin Fruitland Coal. Attached is the future production decline estimates for the Aztec Pictured Cliffs.

Commingling Production Downhole in the subject well from the propped Pools will not reduce the value of the total remaining production.



## SJ Basin Well Work Procedure

**Well Name:** Storey B LS #5

**Version:** 1.0 Version

**Date:** June 29, 2005

**Type III Fruitland Coal  
Recompletion Program**

**Repair Type:** Recompletion and Downhole Co-mingle of Pictured Cliffs and Fruitland Coal

---

### History

The Storey B LS #5 is currently flowing only marginal gas less than 10 mcf/d against 169 psi line pressure.

This well was drilled and completed as a Pictured Cliffs well in 1959. The initial fracture treatment was 40,000# Sand with 37,086 gal water.

Cumulative production for the Pictured Cliffs is 995 MMCF.

### Procedure:

1. Check anchors. MIRU workover rig Key 66
2. Check and record tubing, casing, and bradenhead pressures.
3. Blow down well. Kill with 2% KCL water ONLY if necessary.
4. Nipple down Wellhead. NU BOPs and diversion spool with 3" outlets and 3" pipe to the blow tank. Pressure test BOPs to 200 psi above BHP. Monitor flowing casing pressure with gauge (with casing flowing to blow tank) throughout workover.
5. Pull tubing hanger and shut pipe rams for 2 3/8" tubing and install stripping rubber.
6. Tag for fill and tally OH with 2 3/8" production tubing currently set at 2319'. Plug back total depth is 2390' with perforations 2336'-2348'; 2352'-2366'; 2370'-2376' in Pictured Cliffs.
7. TOH with 2 3/8" production tubing using approved "Under Balance Well Control Tripping Procedure".  
*Contingency: If the tubing is in poor condition, replace entire tubing string.*
8. Rig up Schlumberger and test lubricator 200 psi low and 1500 psi high.

9. Run Gamma Ray Depth Control log to tie in the top of the Pictured Cliff perforations and the Fruitland Coal Sand topped at 2090'.
10. Run Gage ring and junk basket for 5 ½" 15.5# J55 casing and then set RBP at 2330' RKB above the top of the Pictured Cliffs perforations.
11. Load hole with 2 % KCl water and test casing to 500 psi.
12. Run Coal Identification Log and Cement Bond Log.
13. ND existing wellhead and replace with FMC BP Amoco Standard 5 ½" x 2 3/8" Retro-fit wellhead as per attached diagram and material list.
14. Rig up Schlumberger and test lubricator 200 psi low and 1500 psi high
15. Run Cased Hole Dynamic Test Tool and measure pressures at seven (7) depths to be determined from Coal Identification Log. Estimated depths are 2315', 2310', 2195', 2170', 2135', 2120', and 2110'.

<b>Estimated Fruitland Coal Intervals</b>			
<b>NAME</b>	<b>TOP</b>	<b>BOTTOM</b>	<b>Approximate CHDT Depth</b>
<b>Fruitland Sand (IGNA)</b>	<b>2087'</b>	<b>2144'</b>	<b>2110', 2120', 2135'</b>
<b>CTWD</b>	<b>2160'</b>	<b>2200'</b>	<b>2170' and 2195'</b>
<b>CAHN</b>	<b>2300'</b>	<b>2320'</b>	<b>2310' and 2315'</b>

16. Prepare to perforate 2300'-2320' at 4 spf using 3 1/8" HSD loaded with PowerJet charges EH .45" and Penetration of 38.5".
17. Run 2 7/8" 6.5# N-80 Buttress fracture treatment string and set packer at 2250'
18. Install Stinger Tree Saver.
19. Fracture treat well for **Stage 1** with an estimated 100,000# 16/30 Brady Sand and 70% Q Foam at 45 BPM as per Schlumberger Detailed Fracture Treatment Proposal. Limit treating pressure to a maximum of 6000 psi.
20. Flow well back to recover as much load fluid as possible.
21. Unseat packer and POH
22. Set Retrievable Bridge Plug at 2250' and casing perforate as before at 2170'-2190' and 2100'-2110'.
23. Run 2 7/8" 6.5# N-80 Buttress fracture treatment string and set packer at 2000'
24. Install Stinger Tree Saver.
25. Fracture treat well for **Stage 2** with an estimated 200,000# 16/30 Brady Sand and 70% Q Foam at 45 BPM as per Schlumberger Detailed Fracture Treatment Proposal. Limit treating pressure to a maximum of 6000 psi.

26. Flow well back to recover as much load fluid as possible.
27. Unseat packer and POH
28. Recover RBP at 2250' and 2330'
29. Cleanout wellbore to PBTD and flow to clean up with 2 3/8".
30. Hang off tubing at 2370' with Nipples for plunger lift.
31. Release to production department and produce Pictured Cliff Zone and Fruitland Coal Zone down hole co-mingled with compression at 5 – 10 psi suction pressure.

***Richard W. Pomrenke***

*Petroleum Engineer Consultant*

*Type III Coal Recompletion Program*

*San Juan South*

*Onshore US Business Unit*

19.113

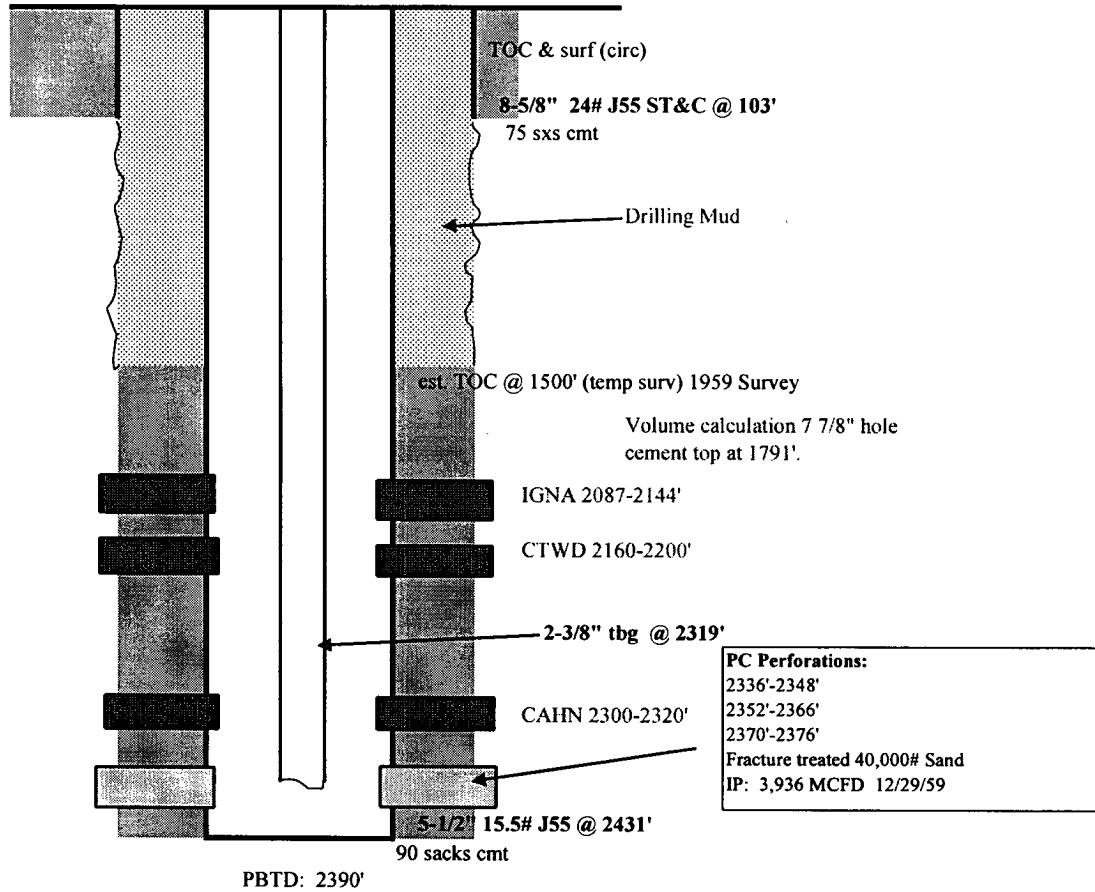
☎ 281-366-5023 office

☎ 281 455 8449 cell

✉ pomrrw@bp.com

Current Diagram 2-15-05  
**Storey B LS #5**  
 Sec 11, T30N, R11W  
 API: 30-045-09601

5862' GL



NOTES:

updated: 7/22/03 jad

**District I**  
1625 N. French Dr., Hobbs, NM 88240

**District II**  
811 South First, Artesia, NM 88210

**District III**  
1000 Rio Brazos Rd., Aztec, NM 87410

**District IV**  
2040 South Pacheco, Santa Fe, NM 87505

State of New Mexico  
Energy, Minerals & Natural Resources Department

Form C-102  
Revised August 15, 2000

**OIL CONSERVATION DIVISION**  
2040 South Pacheco  
Santa Fe, NM 87505

Submit to Appropriate District Office  
State Lease - 4 Copies  
Fee Lease - 3 Copies

AMENDED REPORT

**WELL LOCATION AND ACREAGE DEDICATION PLAT**

<sup>1</sup> API Number <b>30-045-09601</b>	<sup>2</sup> Pool Code <b>71629</b>	<sup>3</sup> Pool Name <b>Basin Fruitland Coal</b>
<sup>4</sup> Property Code <b>001136</b>	<sup>5</sup> Property Name <b>Storey B LS</b>	<sup>6</sup> Well Number <b>5</b>
<sup>7</sup> OGRID No. <b>000778</b>	<sup>8</sup> Operator Name <b>BP America Production Company</b>	<sup>9</sup> Elevation <b>5862</b>

<sup>10</sup> Surface Location

UL or lot no. <b>O</b>	Section <b>11</b>	Township <b>30N</b>	Range <b>11W</b>	Lot Idn	Feet from <b>800</b>	North/South <b>South</b>	Feet from <b>1800</b>	East/West <b>East</b>	County <b>San Juan</b>
---------------------------	----------------------	------------------------	---------------------	---------	-------------------------	-----------------------------	--------------------------	--------------------------	---------------------------

<sup>11</sup> Bottom Hole Location If Different From Surface

UL or lot no.	Section	Township	Range	Lot Idn	Feet from	North/South	Feet	East/West	County
<sup>12</sup> Dedicated Acres <b>320</b>	<sup>13</sup> Joint or Infill	<sup>14</sup> Consolidation Code	<sup>15</sup> Order No.						

NO ALLOWABLE WILL BE ASSIGNED TO THIS COMPLETION UNTIL ALL INTERESTS HAVE BEEN CONSOLIDATED OR A NON-STANDARD UNIT HAS BEEN APPROVED BY THE DIVISION

				<sup>17</sup> OPERATOR CERTIFICATION <i>I hereby certify that the information contained herein is true and complete to the best of my knowledge and belief.</i>
				Signature <b>Cherry Hlava</b>
				Printed Name <b>Cherry Hlava</b>
				Title <b>Regulatory Analyst</b>
				Date <b>7/5/2005</b>
				<sup>18</sup> SURVEYOR CERTIFICATION <i>I hereby certify that the well location shown on this plat was plotted from field notes of actual surveys made by me or under my supervision, and that the same is true and correct to the best of my belief.</i>
				On File
				Date of Survey
				Signature and Seal of Professional Surveyor:
				Certificate Number

District I  
1625 N. French Dr., Hobbs, NM 88240

District II  
811 South First, Artesia, NM 88210

District III  
1000 Rio Brazos Rd., Aztec, NM 87410

District IV  
2040 South Pacheco, Santa Fe, NM 87505

State of New Mexico  
Energy, Minerals & Natural Resources Department

OIL CONSERVATION DIVISION  
2040 South Pacheco  
Santa Fe, NM 87505

Form C-102  
Revised August 15, 2000

Submit to Appropriate District Office  
State Lease - 4 Copies  
Fee Lease - 3 Copies

AMENDED REPORT

WELL LOCATION AND ACREAGE DEDICATION PLAT

<sup>1</sup> API Number <b>30-045-09601</b>	<sup>2</sup> Pool Code <b>71280</b>	<sup>3</sup> Pool Name <b>Aztec Pictured Cliffs</b>
<sup>4</sup> Property Code <b>001136</b>	<sup>5</sup> Property Name <b>Storey B LS</b>	<sup>6</sup> Well Number <b>5</b>
<sup>7</sup> OGRID No. <b>000778</b>	<sup>8</sup> Operator Name <b>BP America Production Company</b>	<sup>9</sup> Elevation <b>5862'</b>

<sup>10</sup> Surface Location

UL or lot no. <b>0</b>	Section <b>11</b>	Township <b>30N</b>	Range <b>11W</b>	Lot Idn	Feet from <b>800</b>	North/South <b>South</b>	Feet from <b>1800'</b>	East/West <b>East</b>	County <b>San Juan</b>
---------------------------	----------------------	------------------------	---------------------	---------	-------------------------	-----------------------------	---------------------------	--------------------------	---------------------------

<sup>11</sup> Bottom Hole Location If Different From Surface

UL or lot no.	Section	Township	Range	Lot Idn	Feet from	North/South	Feet	East/West	County
<sup>12</sup> Dedicated Acres <b>160</b>	<sup>13</sup> Joint or Infill	<sup>14</sup> Consolidation Code	<sup>15</sup> Order No.						

NO ALLOWABLE WILL BE ASSIGNED TO THIS COMPLETION UNTIL ALL INTERESTS HAVE BEEN CONSOLIDATED OR A  
NON-STANDARD UNIT HAS BEEN APPROVED BY THE DIVISION

				<sup>17</sup> OPERATOR CERTIFICATION <i>I hereby certify that the information contained herein is true and complete to the best of my knowledge and belief.</i>  <b>Cherry Hlava</b> Signature <b>Cherry Hlava</b> Printed Name <b>Regulatory Analyst</b> Title <b>7/5/2005</b> Date
				<sup>18</sup> SURVEYOR CERTIFICATION <i>I hereby certify that the well location shown on this plat was plotted from field notes of actual surveys made by me or under my supervision, and that the same is true and correct to the best of my belief.</i> <b>Plat on file from 12/04/1959</b> Date of Survey <b>11/28/1959</b> Signature and Seal of Professional Surveyor:  Certificate Number



## Storey B LS 5

30-045-09601

## Aztec Pictured Cliffs formation decline

Di (annual) 0.143591

Date	MCF	Date	MCF	Date	MCF	Date	MCF	Date	MCF
7/15/2005	20	7/15/2008	13.00	7/15/2011	8.45	7/15/2014	5.49	7/15/2017	3.57
8/15/2005	19.76	8/15/2008	12.85	8/15/2011	8.35	8/15/2014	5.43	8/15/2017	3.53
9/15/2005	19.53	9/15/2008	12.69	9/15/2011	8.25	9/15/2014	5.36	9/15/2017	3.49
10/15/2005	19.29	10/15/2008	12.54	10/15/2011	8.15	10/15/2014	5.30	10/15/2017	3.44
11/15/2005	19.07	11/15/2008	12.39	11/15/2011	8.06	11/15/2014	5.24	11/15/2017	3.40
12/15/2005	18.84	12/15/2008	12.25	12/15/2011	7.96	12/15/2014	5.17	12/15/2017	3.36
1/15/2006	18.61	1/15/2009	12.10	1/15/2012	7.86	1/15/2015	5.11	1/15/2018	3.32
2/15/2006	18.39	2/15/2009	11.96	2/15/2012	7.77	2/15/2015	5.05	2/15/2018	3.28
3/15/2006	18.17	3/15/2009	11.81	3/15/2012	7.68	3/15/2015	4.99	3/15/2018	3.24
4/15/2006	17.96	4/15/2009	11.67	4/15/2012	7.59	4/15/2015	4.93	4/15/2018	3.21
5/15/2006	17.74	5/15/2009	11.53	5/15/2012	7.50	5/15/2015	4.87	5/15/2018	3.17
6/15/2006	17.53	6/15/2009	11.40	6/15/2012	7.41	6/15/2015	4.82	6/15/2018	3.13
7/15/2006	17.32	7/15/2009	11.26	7/15/2012	7.32	7/15/2015	4.76	7/15/2018	3.09
8/15/2006	17.12	8/15/2009	11.13	8/15/2012	7.23	8/15/2015	4.70	8/15/2018	3.06
9/15/2006	16.92	9/15/2009	10.99	9/15/2012	7.15	9/15/2015	4.65	9/15/2018	3.02
10/15/2006	16.71	10/15/2009	10.86	10/15/2012	7.06	10/15/2015	4.59	10/15/2018	2.98
11/15/2006	16.52	11/15/2009	10.73	11/15/2012	6.98	11/15/2015	4.54	11/15/2018	2.95
12/15/2006	16.32	12/15/2009	10.61	12/15/2012	6.89	12/15/2015	4.48	12/15/2018	2.91
1/15/2007	16.12	1/15/2010	10.48	1/15/2013	6.81	1/15/2016	4.43	1/15/2019	2.88
2/15/2007	15.93	2/15/2010	10.36	2/15/2013	6.73	2/15/2016	4.38	2/15/2019	2.84
3/15/2007	15.74	3/15/2010	10.23	3/15/2013	6.65	3/15/2016	4.32	3/15/2019	2.81
4/15/2007	15.56	4/15/2010	10.11	4/15/2013	6.57	4/15/2016	4.27	4/15/2019	2.78
5/15/2007	15.37	5/15/2010	9.99	5/15/2013	6.49	5/15/2016	4.22	5/15/2019	2.74
6/15/2007	15.19	6/15/2010	9.87	6/15/2013	6.42	6/15/2016	4.17	6/15/2019	2.71
7/15/2007	15.01	7/15/2010	9.75	7/15/2013	6.34	7/15/2016	4.12	7/15/2019	2.68
8/15/2007	14.83	8/15/2010	9.64	8/15/2013	6.27	8/15/2016	4.07	8/15/2019	2.65
9/15/2007	14.65	9/15/2010	9.52	9/15/2013	6.19	9/15/2016	4.02	9/15/2019	2.62
10/15/2007	14.48	10/15/2010	9.41	10/15/2013	6.12	10/15/2016	3.98	10/15/2019	2.58
11/15/2007	14.31	11/15/2010	9.30	11/15/2013	6.04	11/15/2016	3.93	11/15/2019	2.55
12/15/2007	14.14	12/15/2010	9.19	12/15/2013	5.97	12/15/2016	3.88	12/15/2019	2.52
1/15/2008	13.97	1/15/2011	9.08	1/15/2014	5.90	1/15/2017	3.84	1/15/2020	2.49
2/15/2008	13.80	2/15/2011	8.97	2/15/2014	5.83	2/15/2017	3.79	2/15/2020	2.46
3/15/2008	13.64	3/15/2011	8.86	3/15/2014	5.76	3/15/2017	3.75	3/15/2020	2.43
4/15/2008	13.48	4/15/2011	8.76	4/15/2014	5.69	4/15/2017	3.70	4/15/2020	2.41
5/15/2008	13.31	5/15/2011	8.65	5/15/2014	5.63	5/15/2017	3.66	5/15/2020	2.38
6/15/2008	13.16	6/15/2011	8.55	6/15/2014	5.56	6/15/2017	3.61	6/15/2020	2.35