

UNITED STATES
DEPARTMENT OF THE INTERIOR
BUREAU OF LAND MANAGEMENT

APPLICATION FOR PERMIT TO DRILL, DEEPEN, OR PLUG BACK

1a. Type of Work <u>Deepen</u>	5. Lease Number SF-078511 Unit Reporting Number
1b. Type of Well GAS	6. If Indian, All. or Tribe
2. Operator BURLINGTON RESOURCES Oil & Gas Company LP	7. Unit Agreement Name
3. Address & Phone No. of Operator PO Box 4289, Farmington, NM 87499 (505) 326-9700	8. Farm or Lease Name QUINN 9. Well Number #2B
4. Location of Well 310' FSL, 1055' FWL Latitude 36*52.63'N, Longitude 107*43.14'W	10. Field, Pool, Wildcat BLANCO MV/BASIN DK 11. Sec., Twn, Rge, Mer. (NMPM) UNIT N, Sec. 19, T31N, R8W API # 30-045-30151
14. Distance in Miles from Nearest Town 5 MILES FROM NAVAJO CITY	12. County SAN JUAN 13. State NM
15. Distance from Proposed Location to Nearest Property or Lease Line 310'	17. Acres Assigned to Well 326.56
16. Acres in Lease	
CONDITIONS OF APPROVAL Adhere to previously issued stipulations.	
18. Distance from Proposed Location to Nearest Well, Drlg, Compl, or Applied for on this Lease 1500'	
19. Proposed Depth 7860'	20. Rotary or Cable Tools Rotary
21. Elevations (DF, FT, GR, Etc.) 6393' GL	22. Approx. Date Work will Start
23. Proposed Casing and Cementing Program See Operations Plan attached	
24. Authorized by: <u>Mikema T. Thompson</u> Regulatory Associate II	6/5/05 Date

PERMIT NO.

APPROVAL DATE

APPROVED BY John L. Vato

TITLE Acting Field Manager Minerals

DATE 7/8/05

Archaeological Report attached

Threatened and Endangered Species Report attached

HOLD C104 FOR AKSP

NOTE: This format is issued in lieu of U.S. BLM Form 3160-3

Title 18 U.S.C. Section 1001, makes it a crime for any person knowingly and willfully to make to any department or agency of the United States any false, fictitious or fraudulent statements or presentations as to any matter within its jurisdiction.

DRILLING OPERATIONS AUTHORIZED ARE
SUBJECT TO COMPLIANCE WITH ATTACHED
"GENERAL REQUIREMENTS".

This action is subject to technical and
procedural review pursuant to 43 CFR 3165.3
and appeal pursuant to 43 CFR 3165.4

NMOC

District I
PO Box 1980, Hobbs, NM 88241-1980

District II
PO Drawer DD, Artesia, NM 88211-0719

District III
1000 Rio Brazos Rd., Aztec, NM 87410

District IV
PO Box 2088, Santa Fe, NM 87504-2088

State of New Mexico
Energy, Minerals & Natural Resources Department

OIL CONSERVATION DIVISION
PO Box 2088
Santa Fe, NM 87504-2088

Form C-102
Revised February 21, 1994
Instructions on back
Submit to Appropriate District Office
State Lease - 4 Copies
Fee Lease - 3 Copies

AMENDED REPORT

WELL LOCATION AND ACREAGE DEDICATION PLAT

*API Number 30-045- 30151		*Pool Code 71599	*Pool Name Basin Dakota (Prorated Gas)
*Property Code 7407	*Property Name QUINN		*Well Number 2B
*GRID No. 14538	*Operator Name BURLINGTON RESOURCES OIL & GAS COMPANY		*Elevation 6393'

¹⁰ Surface Location

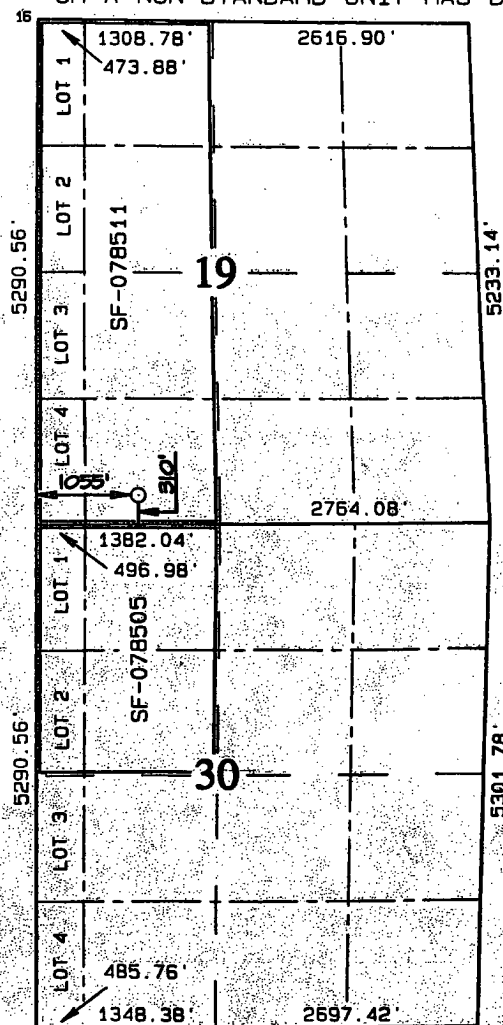
UL or lot no.	Section	Township	Range	Lot Idn	Feet from the	North/South line	Feet from the	East/West line	County
N	19	31N	8W		310	SOUTH	1055	WEST	SAN JUAN

¹¹ Bottom Hole Location If Different From Surface

UL or lot no.	Section	Township	Range	Lot Idn	Feet from the	North/South line	Feet from the	East/West line	County

¹² Dedicated Acres 326.56	¹³ Joint or Infill	¹⁴ Consolidation Code	¹⁵ Order No.
--	-------------------------------	----------------------------------	-------------------------

NO ALLOWABLE WILL BE ASSIGNED TO THIS COMPLETION UNTIL ALL INTERESTS HAVE BEEN CONSOLIDATED OR A NON-STANDARD UNIT HAS BEEN APPROVED BY THE DIVISION



¹⁷ OPERATOR CERTIFICATION

I hereby certify that the information contained herein is true and complete to the best of my knowledge and belief

Philana Thompson
Signature

Philana Thompson
Printed Name

Regulatory Associate II
Title

May 18, 2005
Date

¹⁸ SURVEYOR CERTIFICATION

I hereby certify that the well location shown on this plat was plotted from field notes of actual surveys made by me or under my supervision, and that the same is true and correct to the best of my belief.

DECEMBER 23, 1999
Date of Survey

Signature and Seal of Professional Surveyor

NEALE C. EDWARDS
6857
Certificate Number **6857**

OPERATIONS PLAN FOR QUINN #2B

Well: QUINN #2B
Location: Unit M, Section 19, T31N, R08W; 310' FSL, 1055' FWL
San Juan County, NM
Latitude 36° 52.63' Longitude 107° 43.14'

Formation: Blanco Mesaverde and Basin Dakota

<u>Formation Tops:</u>	<u>Top</u>	<u>Bottom</u>	<u>Contents</u>
Surface	San Jose		----
Ojo Alamo	2033'	2093'	aquifer
Kirtland	2093'	2958'	gas
Fruitland	2958'	3242'	gas
Pictured Cliffs	3242'	3374'	gas
Lewis	3374'	3981'	gas
Huerfanito Bentonite	3981'	4346'	gas
Chacra	4346'	4802'	gas
Upper Cliff House	4802'	5110'	gas
Massive Cliff House	5110'	5170'	gas
Menefee	5170'	5476'	gas
Massive Point Lookout	5476'	5855'	gas
Mancos	5855'	6795'	gas
Gallup	6795'	7533'	gas
Greenhorn	7533'	7590'	gas
Graneros	7590'	7663'	gas
Two Wells	7663'		gas
Total Depth	7860'		

Logging program:
Cased hole - CBL-CCL-GR - TD to 6400'

<u>Interval</u>	<u>Type</u>	<u>Weight</u>	<u>Vis.</u>	<u>Fluid Loss</u>
5997' – 7860'	Air/Nitrogen	n/a	n/a	n/a

<u>Hole Size</u>	<u>Depth Interval</u>	<u>Csg.Size</u>	<u>Wt.</u>	<u>Grade</u>
3-7/8"	~5900' – 7860'	3-1/2" Flush	9.3#/'	L-80

<u>Tubing Program:</u>	<u>Tbg.Size</u>	<u>Wt.</u>	<u>Grade</u>
0' – total depth	2-1/16"	3.25#	J-55

Operations:

It is intended to deepen the subject well to the Dakota formation by the following procedure:

1. MIRU completion rig. TOOH with tubing.
2. Set retrievable bridge plug at +/- 4150'.
3. Pressure test casing to 1000 psi for 15 minutes. TOOH with bridge plug.
4. Lay in acid soluble cement across entire Mesaverde interval. WOC.
5. Drill out cement. Test casing to 500 psi for 15 minutes. Repeat cement work until pressure test holds.
6. Drill out shoe. Drill Dakota formation to approximately 7860' with mud logger to call final total depth. TOOH.
7. TIH with 3-1/2" flush joint pipe and set at total depth.
8. Cement with 27 sxs of type III cement (1.39 yield, 14.5 ppg). WOC. Run CBL. TOC @ 6463'.
9. Perforate and fracture stimulate the Dakota formation. Flow back Dakota.
10. Set composite plug 50' above top Dakota perforation.
11. Chemical cut 3-1/2" casing at +/- 5900'.
12. Acidize Mesaverde interval to restore production.

13. Drill out composite plug above the Dakota. Clean out to PBTD.
14. Land 2-1/16" IJ tubing.
15. RDMO rig. Return well to production as a commingled MV/DK producer.

BOP Specifications, Wellhead and Tests:

Surface to Total Depth:

2" nominal, 3000 psi minimum choke manifold (Reference Figure #3).

Completion Operations:

7 1/16" 3000 psi double gate BOP stack (Reference Figure #4). After nipple-up prior to completion, pipe rams, casing and liner top will be tested to 3000 psi for 15 minutes.

Wellhead:

9 5/8" x 7" x 4 1/2" x 2 1/16" x 3000 psi tree assembly.

General Information:

- Pipe rams will be actuated once each day and blind rams will be actuated once each trip to test proper functioning.
- An upper kelly cock valve with handle available and drill string valves to fit each drill string will be available on the rig floors at all times.
- All BOP tests and drills will be recorded in daily drilling reports.
- Blind and pipe rams will be equipped with hand wheels.

Cementing:

3-1/2" Production Liner

Cement to cover minimum of 1200' above the Dakota formation. Minimum TOC @ 6463'. 27 sxs type III cement (1.39 yield, 14.5 ppg). WOC a minimum of 18 hrs prior to completing.

Special Drilling Operations (Gas/Mist Drilling):

The following equipment will be operational while gas/mist drilling:

- An anchored blooie line will be utilized to discharge all cuttings and circulating medium to the blow pit a minimum of 100' from the wellhead.
- Compressors will be located a minimum of 100' from the wellhead in the opposite direction from the blooie line.
- Engines will have spark arresters or water-cooled exhaust.
- Deduster equipment will be utilized.
- The rotating head will be properly lubricated and maintained.
- A float valve will be utilized above the bit.
- Mud circulating equipment, water, and mud materials will be sufficient to maintain control of the well.

Additional Information:

- The Mesaverde and/or Dakota formations will be completed and commingled if both formations are completed.
- No abnormal temperatures or hazards are anticipated.
- Anticipated pore pressures are as follows:
Dakota 2550 psi

Angela Ibara
Sr. Staff Engineer

5/11/05
Date

Quinn #2B

310' FSL, 1055' FWL
Unit M, Section 19, T31N, R08W
San Juan County, NM

LAT: 36 deg 52.63 min

LONG: 107 deg 43.14 min

GL = 6,393'

KB= 6,405'

Current Wellbore Diagram

Surface Casing:

9-5/8" 32.3# WC-50
Set @ 518'
TOC @ circ to surf

Intermediate Casing:

7" 20# J-55
Set @ 3,484' 219 sxs
TOC @ circ to surf
DVT @ 2,643'
TOC @ circ to surf

Tubing:

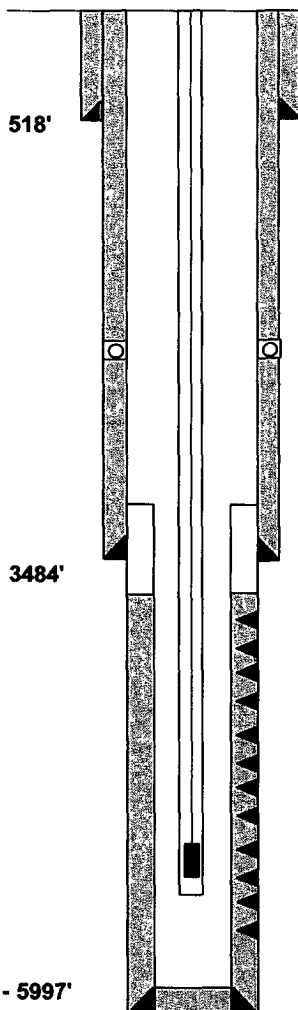
2-3/8" 4.7# J-55
Set @ 5890
SN @ 5837
BHA: see pert data sheet

Rods:

3/4" 232 jts
BHA: see pert data sheet

Production Liner:

4-1/2" 10.5# J-55
Set @ 3361' - 5997'
TOC @ 3596' CBL



Ojo Alamo 2,033'
Kirtland 2,093'
Fruitland 2,958'
Pictured Cliffs 3,242'
Lewis 3,374'
Heur Bent. 3,981'
Chacra 4,346'
Cliffhouse 4,802'
Menefee 5,170'
Point Lookout 5,476'
Mancos 5,855'
Gallup 6,795'
Greenhorn 7,533'
Graneros 7,590'
Two Wells 7,663'

LW

4200' - 4572'
200,000# sand, 123,109 gal slickwater

UMN/CH

4807' - 5177'
100,000# sand, 99,226 gal slickwater

PLO/LMN

5361' - 5840'
100,000# sand, 100,340 gal slickwater

PBTD= 5,997'

TD= 6,000'

PLO/LMN: 5361', 91', 5445', 86', 5506', 16', 27', 61', 72', 86', 94', 5600', 11', 22', 32', 79', 5710', 28', 47', 53', 62', 79', 88', 98', 5804', 40'

UMN/CH: 4807', 12', 19', 29', 47', 59', 70', 79', 95', 4906', 13', 22', 47', 76', 5046', 75', 82', 89', 5103', 13', 31', 38', 46', 60', 77'

LW: 4200', 02', 06', 08', 10', 12', 17', 22', 24', 26', 28', 32', 34', 36', 38', 40', 4347', 50', 52', 56', 58', 70', 72', 74', 76', 78', 88', 90', 92', 94', 96', 4402', 04', 06', 08', 10', 16', 18', 4500', 04', 06', 10', 46', 48', 50', 52', 54', 60', 64', 66', 68', 72'

Quinn #2B

310' FSL, 1055' FWL
Unit M, Section 19, T31N, R08W
San Juan County, NM

LAT: 36 deg 52.63 min

LONG: 107 deg 43.14 min

GL = 6,393'

KB= 6,405'

Proposed Wellbore Diagram

Surface Casing:

9-5/8" 32.3# WC-50
Set @ 518'
TOC @ circ to surf

Intermediate Casing:

7" 20# J-55
Set @ 3,484' 219 sxs
TOC @ circ to surf
DVT @ 2,643'
TOC @ circ to surf

Tubing:

2-1/16" 3.25 J-55 IJ
Set @ TBD
SN @ TBD

Production Liner:

4-1/2" 10.5# J-55
Set @ 3361' - 5997'
TOC @ 3596' CBL

Proposed Production Liner:

3-1/2" FLS 9.3# L-80
Set @ 5900'-7860'
TOC @ 6,463'

Ojo Alamo 2,033'
Kirtland 2,093'
Fruitland 2,958'
Pictured Cliffs 3,242'
Lewis 3,374'
Heur Bent. 3,981'
Chacra 4,346'
Cliffhouse 4,802'
Menefee 5,170'
Point Lookout 5,476'
Mancos 5,855'
Gallup 6,795'
Greenhorn 7,533'
Graneros 7,590'
Two Wells 7,663'

LW

4200' - 4572'

200,000# sand, 123,109 gal slickwater

UMN/CH

4807' - 5177'

100,000# sand, 99,226 gal slickwater

PLO/LMN

5361' - 5840'

100,000# sand, 100,340 gal slickwater

Dakota

TBD

40,000# TLC, slickwater

PBTD= 7,858'

TD= 7,860'