

UNITED STATES  
DEPARTMENT OF THE INTERIOR  
BUREAU OF LAND MANAGEMENT

APPLICATION FOR PERMIT TO DRILL, DEEPEN, OR PLUG BACK

1a. Type of Work  
DRILL

1b. Type of Well  
GAS

2. Operator  
**BURLINGTON**  
RESOURCES Oil & Gas Company

3. Address & Phone No. of Operator  
PO Box 4289, Farmington, NM 87499  
(505) 326-9700

4. Location of Well  
1355' FNL, 1945' FWL  
Latitude 36° 41.9976'N, Longitude 107° 17.7157'W

5. Lease Number  
SF-079893-A  
Unit Reporting Number  
MV-8910010510  
DK-891001051B

6. If Indian, All. or Tribe

7. Unit Agreement Name  
San Juan 29-4 Unit

8. Farm or Lease Name  
San Juan 29-4 Unit

9. Well Number  
#25

10. Field, Pool, Wildcat  
Gobernador Pictured Cliffs

11. Sec., Twn, Rge, Mer. (NMPM)  
F Sec. 30, T29N, R04W  
API # 30-039- 27753'

12. County  
Rio Arriba

13. State  
NM

14. Distance in Miles from Nearest Town  
41.6 miles to Blanco Post Office

15. Distance from Proposed Location to Nearest Property or Lease Line  
1355'

16. Acres in Lease

17. Acres Assigned to Well  
PC-318.10 W/2-  
159.34 BWA

18. Distance from Proposed Location to Nearest Well, Drig, Compl, or Applied for on this Lease  
1948'

19. Proposed Depth  
4500'

20. Rotary or Cable Tools  
Rotary

21. Elevations (DF, FT, GR, Etc.)  
7393' GR

22. Approx. Date Work will Start

23. Proposed Casing and Cementing Program  
See Operations Plan attached

24. Authorized by: Joni Clark  
Regulatory Specialist

Date 4/5/04

PERMIT NO.

APPROVAL DATE

08/04/04

APPROVED BY

Dana Adams

TITLE

Acting AFM

DATE

08/04/04

Archaeological Report attached

Threatened and Endangered Species Report attached

NOTE: This format is issued in lieu of U.S. BLM Form 3160-3

Title 18 U.S.C. Section 1001, makes it a crime for any person knowingly and willfully to make to any department or agency of the United States any false, fictitious or fraudulent statements or presentations as to any matter within its jurisdiction.

DISTRICT I  
1625 N. French Dr., Hobbs, N.M. 88240

State of New Mexico  
Energy, Minerals & Natural Resources Department

Form C-102  
Revised August 15, 2000

DISTRICT II  
811 South First, Artesia, N.M. 88210

DISTRICT III  
1000 Rio Brazos Rd., Aztec, N.M. 87410

DISTRICT IV  
2040 South Pacheco, Santa Fe, NM 87505

OIL CONSERVATION DIVISION

2040 South Pacheco  
Santa Fe, NM 87505

Submit to Appropriate District Office  
State Lease - 4 Copies  
Fee Lease - 3 Copies

2004 MAY 24 PM 1:40

☐ AMENDED REPORT

WELL LOCATION AND ACREAGE DEDICATION PLAT

*API Number 30-039-27753	*Pool Code 77440	*Pool Name GOVERNADOR PICTURED CLIFFS
*Property Code 7463	*Property Name SAN JUAN 29-4 UNIT	*Well Number 25
*OGRID No. 14538	*Operator Name BURLINGTON RESOURCES OIL AND GAS COMPANY LP	*Elevation 7393'

<sup>10</sup> Surface Location

UL or lot no.	Section	Township	Range	Lot Idn	Feet from the	North/South line	Feet from the	East/West line	County
F	30	29-N	4-W		1355'	NORTH	1945'	WEST	RIO ARriba

<sup>11</sup> Bottom Hole Location If Different From Surface

UL or lot no.	Section	Township	Range	Lot Idn	Feet from the	North/South line	Feet from the	East/West line	County
Dedicated Acres NW 1/4 154.34 W2-318.10			Joint or Infill		Consolidation Code 320 acres for revenue 160 acres for density		Order No. purposes for the Pictured Cliffs purposes for the Pictured Cliffs		

NO ALLOWABLE WILL BE ASSIGNED TO THIS COMPLETION UNTIL ALL INTERESTS HAVE BEEN CONSOLIDATED  
OR A NON-STANDARD UNIT HAS BEEN APPROVED BY THE DIVISION

16

FD 2 1/2" G.L.O. BC 1914				
LOT 1		1355'		
1945'			LAT: 36°41.9976' N. (NAD 27) LONG: 107°17.7157' W. (NAD 27)	
LOT 2				
USA SF-079893-A		30		
LOT 3				
LOT 4				
FD 2 1/2" G.L.O. BC 1914				

17 OPERATOR CERTIFICATION

I hereby certify that the information contained herein  
is true and complete to the best of my knowledge and  
belief

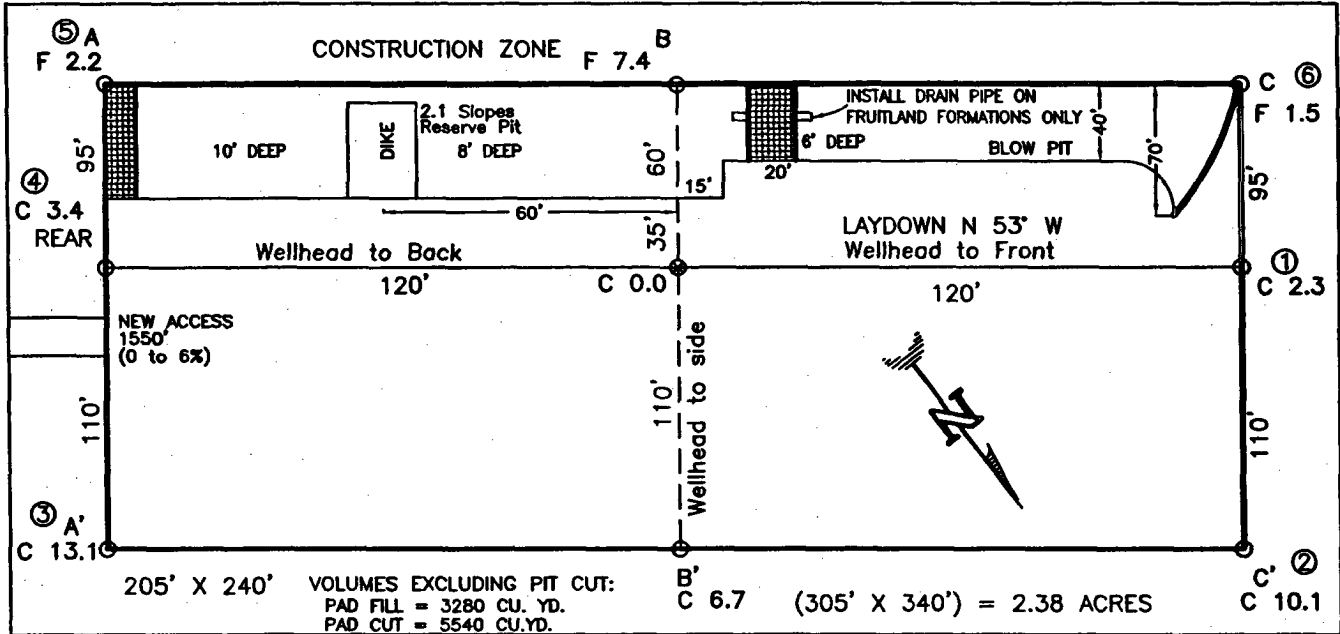
*Joni Clark*  
Signature  
Joni Clark  
Printed Name  
Regulatory Specialist  
Title  
3/24/04  
Date

18 SURVEYOR CERTIFICATION

I hereby certify that the well location shown on this plat  
was plotted from field notes of actual surveys made by  
me or under my supervision, and that the same is true  
and correct to the best of my belief.

*DAVID A. JOHNSON*  
Date of Survey  
NEW MEXICO  
Signature and Seal of Professional Surveyor:  
14827  
REGISTERED PROFESSIONAL SURVEYOR  
14827  
Certificate Number

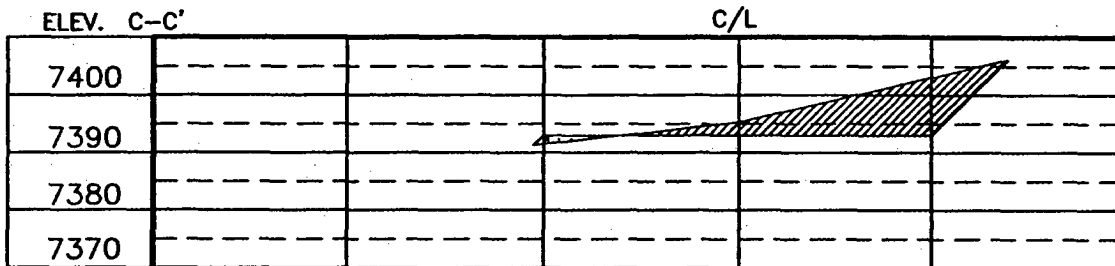
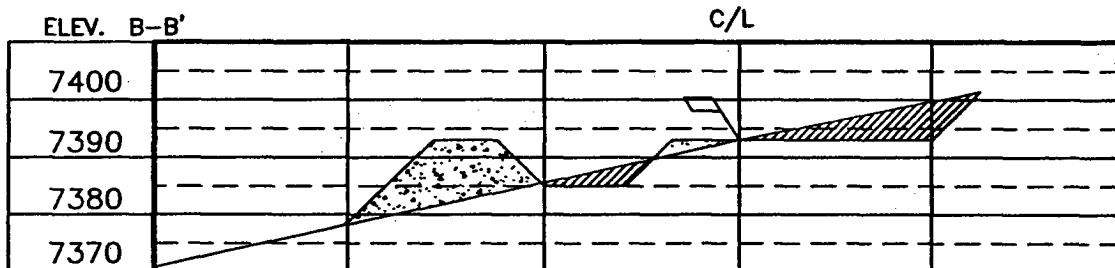
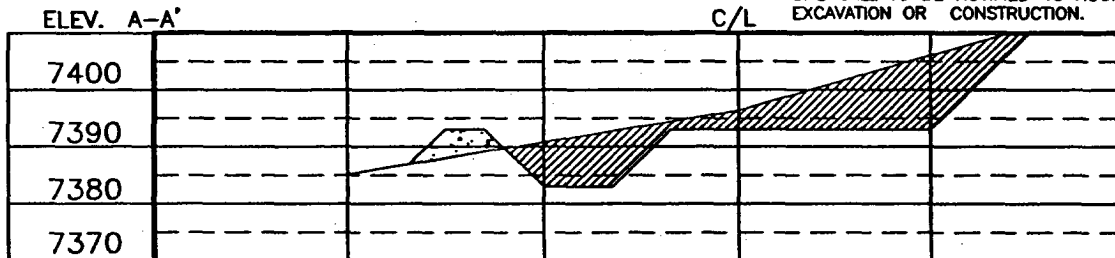
**BURLINGTON RESOURCES OIL & GAS COMPANY LP**  
**SAN JUAN 29-4 UNIT No. 25, 1355 FNL 1945 FWL**  
**SECTION 30, T-29-N, R-4-W, N.M.P.M., RIO ARriba COUNTY, NEW MEXICO**  
**GROUND ELEVATION: 7393', DATE: OCTOBER 23, 2003**



RESERVE PIT DIKE: TO BE 8' ABOVE DEEP SIDE (OVERFLOW - 3' WIDE AND 1' ABOVE SHALLOW SIDE).  
 BLOW PIT: OVERFLOW PIPE HALFWAY BETWEEN TOP AND BOTTOM AND TO EXTEND OVER PLASTIC LINER AND INTO BLOW PIT.

**NOTE:**

DAGGETT ENTERPRISES, INC. IS NOT LIABLE FOR UNDERGROUND UTILITIES OR PIPELINES. NEW MEXICO ONE CALL TO BE NOTIFIED 48 HOURS PRIOR TO EXCAVATION OR CONSTRUCTION.



**NOTE: CONTRACTOR SHOULD CALL ONE-CALL FOR LOCATION OF ANY MARKED OR UNMARKED BURIED PIPELINES OR CABLES ON WELL PAD AND OR ACCESS ROAD AT LEAST TWO (2) WORKING DAYS PRIOR TO CONSTRUCTION.**

DRAWN BY: A.G. ROW#: BR494 CADFILE: BR494CF8 DATE: 10/30/03

**Daggett Enterprises, Inc.**  
 Surveying and Oil Field Services  
 P. O. Box 15068 Farmington, NM 87401  
 Phone (505) 326-1772 Fax (505) 326-6019

REVISION: FOOTAGE CHANGE BY: A.G. DATE: 2/16/04

### OPERATIONS PLAN

**Well Name:** San Juan 29-4 Unit #25  
**Location:** 1355' FNL, 1945' FWL, Section 30, T-29-N, R-4-W  
Rio Arriba County, New Mexico  
Latitude 36° 41.9976'N, Longitude 107° 17.7157'W  
**Formation:** Gobernador Pictured Cliffs  
**Elevation:** 7393' GL

Formation:	Top	Bottom	Contents
Surface	San Jose	3637'	
Ojo Alamo	3637'	3791'	aquifer
Kirtland	3791'	4091'	gas
Fruitland Coal	4091'	4305'	gas
Pictured Cliffs	4305'	4421'	gas
Lewis	4421'		
Total Depth	4500'		

**Logging Program:**

Open hole - Platform Express - TD to surface  
cased hole - CBL-CCL-GR TD to surface

**Coring Program:** None

**Mud Program:**

Interval	Type	Weight	Vis.	Fluid Loss
0- 120'	Spud	8.4-9.0	40-50	no control
120-4500'	FW/LSND	8.4-9.0	32-45	no control

**Casing Program (as listed, equivalent, or better):**

Hole Size	Depth Interval	Csg. Size	Wt.	Grade
8 3/4"	0 - 120'	7"	20.0#	J-55
6 1/4"	0 - 4500'	4 1/2"	10.5#	J-55

**Tubing Program:**

0' -4500'	2 3/8"	4.7#	J-55
-----------	--------	------	------

**Float Equipment:** 7" surface casing - saw tooth guide shoe.  
Centralizers will be run in accordance with Onshore Order #2.

4 1/2" production casing - float shoe on bottom. Standard centralizers run every third joint above shoe to the base of the Ojo Alamo @ 3791'. Two turbolizing type centralizers - one below and one into the base of the Ojo Alamo @ 3791'. Standard centralizers thereafter every fourth joint up to the base of the surface pipe.

**Wellhead Equipment:** 7" x 4 1/2" x 2 3/8" 2000 psi screw on independent wellhead.

**Cementing:**

7" surface casing pre-set drilled- cement with 11 sxs Type I, II cement with 20% flyash mixed at 14.5 ppg, 1.61 cu ft per sack yield. (Bring cement to surface). Wait on cement for 24 hours for pre-set holes before pressure testing or drilling out from under surface.

7" surface casing conventionally drilled - cement with 42 sxs Type III cement with 0.25 pps Celloflake, 3% calcium chloride. (54 cu ft-200% excess, bring cement to surface). Wait on cement appropriate time until cement achieves 250 psi compressive strength at 60 degrees F. prior to nipple up of BOPE. Wait on cement for 8 hrs for conventionally set holes before pressure testing or drilling out from under surface.

Saw tooth guide shoe on bottom. Bowspring centralizers will be run in accordance with Onshore Order #2.

4 1/2" production casing - Lead w/265 sx Premium Lite cement w/3% calcium chloride, 0.25 pps celloflake, 5 pps LCM-1, 0.4% fluid loss, 0.4% sodium metasilicate. Tail w/90 sx Type III cement w/1% calcium chloride, 0.25 pps celloflake, and 0.2% fluid loss (688 cu.ft. of slurry, 50% excess to circulate to surface).

Note: If open hole logs are run, cement volumes will be based on 25% excess over caliper volumes.

**BOP and tests:**

Surface to TD - 11" 2000 psi (minimum double gate BOP stack (Reference Figure #1). Prior to drilling out surface casing, test BOP and casing to 600 psi/30 min.

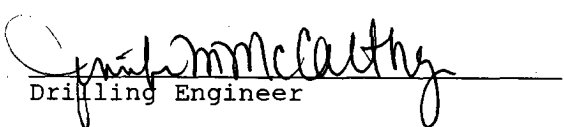
Completion - 6" 2000 psi (minimum) double gate BOP stack (Reference Figure #2). Prior to completion operations, test BOP and casing to 2000 psi/15 min.

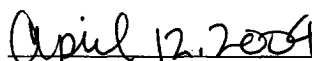
From surface to TD - choke manifold (Reference Figure #3).

Pipe rams will be actuated at least once each day and blind rams actuated once each trip to test proper functioning. An upper kelly cock valve with handle and drill string safety valves to fit each drill string will be maintained and available on the rig floor.

**Additional information:**

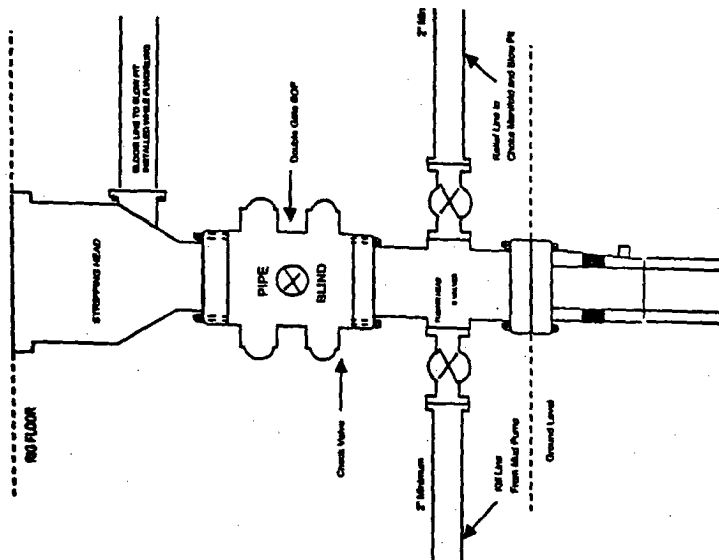
- \* The Pictured Cliffs formation will be completed.
- \* Anticipated pore pressure for the Pictured Cliffs is 500 psi.
- \* This gas is dedicated.
- \* W/2 of Section 30 is dedicated to the Gobernador Pictured Cliffs.

  
Drilling Engineer

  
Date

# BURLINGTON RESOURCES

Completion/Workover Rig  
BOP Configuration  
2,000 psi System

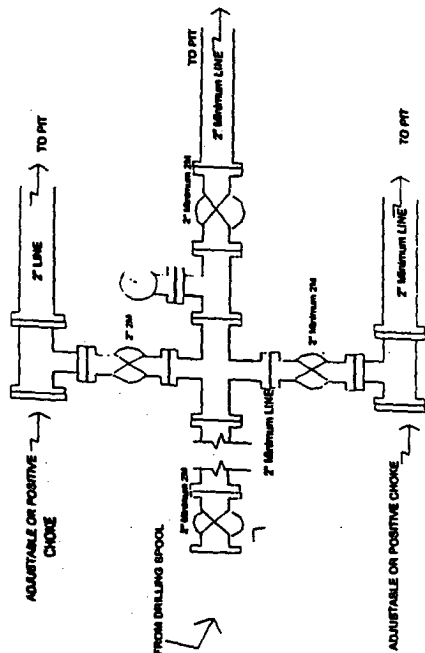


Minimum BOP installation for all Completion/Workover Operations. 7-1/16" bore, 2000 psi minimum working pressure double gate BOP to be equipped with blind and pipe rams. A stripping head to be installed on the top of the BOP. All BOP equipment is 2000 psi stripping head, pressure or greater excluding 800 psi stripping head.

Figure #2

# BURLINGTON RESOURCES

Drilling Rig  
Choke Manifold Configuration  
2000 psi System

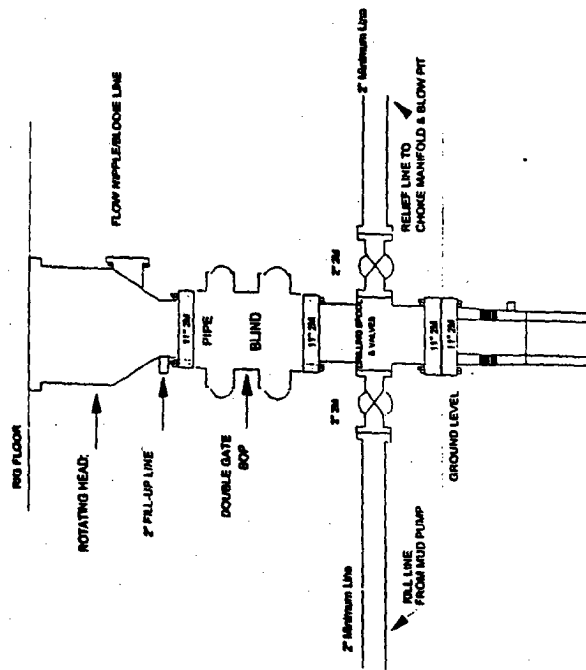


Choke manifold installation from Surface Casing Point to Total Depth. 2,000psi working pressure equipment with two chokes.

Figure #3

# Burlington Resources

Drilling Rig  
2000 psi System



BOP Installation from Surface Casing Point to Total Depth. 11" Bore 10" Nominal, 2000 psi working pressure double gate BOP to be equipped with blind rams and pipe rams. A 500 psi rotating head on top of ram preventers. All BOP equipment is 2,000 psi working pressure

Figure #1