

UNITED STATES
DEPARTMENT OF THE INTERIOR
BUREAU OF LAND MANAGEMENT

APPLICATION FOR PERMIT TO DRILL, DEEPEN, OR PLUG BACK

1a. Type of Work DRILL	2005 JUL 7 00 11 00 RECEIVED 070 FARMINGTON NM	5. Lease Number NMSF-078687 Unit Reporting Number
1b. Type of Well GAS		6. If Indian, All. or Tribe
2. Operator BURLINGTON RESOURCES Oil & Gas Company		7. Unit Agreement Name San Juan 32-9 Unit
3. Address & Phone No. of Operator PO Box 4289, Farmington, NM 87499 (505) 326-9700		8. Farm or Lease Name 9. Well Number #302S
4. Location of Well Unit J (NWSE), 1590' FSL, 1880' FEL Latitude 36° 59.7678'N Longitude 107° 46.9058'W		10. Field, Pool, Wildcat Basin Fruitland Coal 11. Sec., Twn, Rge, Mer. (NMPM) Sec. 9, T32N, R09W API # 30-045-33219
14. Distance in Miles from Nearest Town 22 miles to Aztec, NM	12. County San Juan	13. State NM
15. Distance from Proposed Location to Nearest Property or Lease Line 1590'		
16. Acres in Lease	17. Acres Assigned to Well 362.28 All	
18. Distance from Proposed Location to Nearest Well, Drlg, Compl, or Applied for on this Lease 1200' - San Juan 32-9 Unit #65 MV		
19. Proposed Depth 3800'	20. Rotary or Cable Tools Rotary	
21. Elevations (DF, FT, GR, Etc.) 6918' GL	22. Approx. Date Work will Start	
23. Proposed Casing and Cementing Program See Operations Plan attached		
24. Authorized by: <u>Amanda Sandoval</u> Regulatory Compliance Assistant II	<u>7-7-05</u> Date	

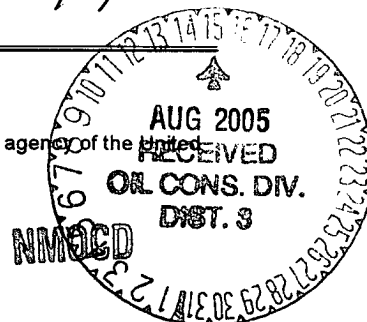
PERMIT NO. _____ APPROVAL DATE 8/11/05
APPROVED BY Robert Adams TITLE Acting AFM DATE 8/11/05 ✓

Archaeological Report attached

Threatened and Endangered Species Report attached

NOTE: This format is issued in lieu of U.S. BLM Form 3160-3

Title 18 U.S.C. Section 1001, makes it a crime for any person knowingly and willfully to make to any department or agency of the United States any false, fictitious or fraudulent statements or presentations as to any matter within its jurisdiction.



District II
PO Drawer DD, Artesia, NM 88211-0719

OIL CONSERVATION DIVISION
PO Box 2088
Santa Fe, NM 87504-2088

Instructions on back
Submit to Appropriate District Office
State Lease - 4 Copies
Fee Lease - 3 Copies

District III
1000 Rio Brazos Rd., Aztec, NM 87410

District IV
PO Box 2088, Santa Fe, NM 87504-2088

☐ AMENDED REPORT

WELL LOCATION AND ACREAGE DEDICATION PLAT

*API Number 30-045- 33219		*Pool Code 71629	*Pool Name Basin Fruitland Coal
*Property Code 7473	*Property Name SAN JUAN 32-9 UNIT		*Well Number 302S
*OGRID No. 14538	*Operator Name BURLINGTON RESOURCES OIL & GAS COMPANY, LP		*Elevation 6918'

¹⁰ Surface Location

UL or lot no.	Section	Township	Range	Lot Idn	Feet from the	North/South line	Feet from the	East/West line	County
J	9	32N	9W		1590	SOUTH	1880	EAST	SAN JUAN

¹¹Bottom Hole Location If Different From Surface

UL or lot no.	Section	Township	Range	Lot Idn	Feet from the	North/South line	Feet from the	East/West line	County
¹² Dedicated Acres					¹³ Joint or Infill	¹⁴ Consolidation Code	¹⁵ Order No.		
362 28 A11									

NO ALLOWABLE WILL BE ASSIGNED TO THIS COMPLETION UNTIL ALL INTERESTS HAVE BEEN CONSOLIDATED
OR A NON-STANDARD UNIT HAS BEEN APPROVED BY THE DIVISION

16 COLORADO / NEW MEXICO 5233.80' STATE-LINE BOUNDARY

LOT 8 7 NM SF-079625 6 LOT 5

377.52' 9 382.14'

1430' 1316.73' LOT 9 LOT 10 LOT 11 LOT 12

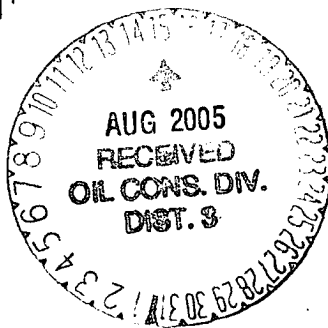
LAT: 36°59.7678' N
LONG: 107°46.9058' W
DATUM: NAD27

735' 1880'

LEASE NM SF-078687

1540' 1316.73' LOT 16 LOT 15 LOT 14 LOT 13 1316.70'

5236.44'



17 OPERATOR CERTIFICATION

I hereby certify that the information
contained herein is true and complete
to the best of my knowledge and belief

Amanda Sandora
Signature

Amanda Sandoval
Printed Name

Regulatory Compliance Assist
Title

4-18-05
Date

¹⁸ SURVEYOR CERTIFICATION

I hereby certify that the well location shown on this plat was plotted from field notes of actual surveys made by me or under my supervision, and that the same is true and correct to the best of my belief.

Date of Survey: MARCH 30, 2005

Signature and Seal of Professional Surveyor



JASON C. EDWARDS
Certificate Number 15269

Office

Energy, Minerals and Natural Resources

May 27, 2004

District I

1625 N. French Dr., Hobbs, NM 88240

District II

1301 W. Grand Ave., Artesia, NM 88210

District III

1000 Rio Brazos Rd., Aztec, NM 87410

District IV

1220 S. St. Francis Dr., Santa Fe, NM 87505

OIL CONSERVATION DIVISION

1220 South St. Francis Dr.

Santa Fe, NM 87505

WELL API NO.

30-045-

5. Indicate Type of Lease

STATE ☐FEE ☐

6. State Oil & Gas Lease No.

NMSF-078687

7. Lease Name or Unit Agreement Name

San Juan 32-9 Unit

8. Well Number

302S

9. OGRID Number

14538

10. Pool name or Wildcat

Basin Fruitland Coal

SUNDRY NOTICES AND REPORTS ON WELLS
(DO NOT USE THIS FORM FOR PROPOSALS TO DRILL OR TO DEEPEN OR PLUG BACK TO A DIFFERENT RESERVOIR. USE "APPLICATION FOR PERMIT" (FORM C-101) FOR SUCH PROPOSALS.)

1. Type of Well:

Oil Well ☐Gas Well ☒

Other

2. Name of Operator

BURLINGTON RESOURCES OIL & GAS COMPANY LP

3. Address of Operator

3401 E. 30TH STREET, FARMINGTON, NM 87402

4. Well Location

Unit Letter J : 1590 feet from the South line and 1880 feet from the East lineSection 9 Township 32N Range 09W NMPM County San Juan

11. Elevation (Show whether DR, RKB, RT, GR, etc.)

6918' GR

Pit or Below-grade Tank Application

☒ or Closure ☐

Pit type

New Drill

Depth to Groundwater

>100'

Distance from nearest fresh water well

>1000'

Distance from nearest surface water

Pit Liner Thickness:

mil

Below-Grade Tank:

Volume

bbls;

Construction Material

12. Check Appropriate Box to Indicate Nature of Notice, Report or Other Data

NOTICE OF INTENTION TO:

PERFORM REMEDIAL WORK ☐TEMPORARILY ABANDON ☐PULL OR ALTER CASING ☐PLUG AND ABANDON ☐CHANGE PLANS ☐MULTIPLE COMPL ☐

SUBSEQUENT REPORT OF:

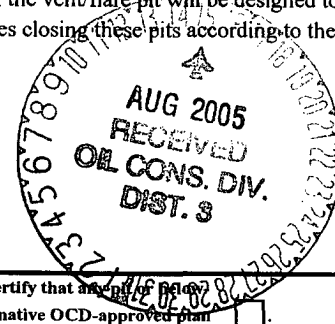
REMEDIAL WORK ☐COMMENCE DRILLING OPNS. ☐CASING/CEMENT JOB ☐ALTERING CASING ☐P AND A ☐

OTHER:

New Drill Pit ☒OTHER: ☐

13. Describe proposed or completed operations. (Clearly state all pertinent details, and give pertinent dates, including estimated date of starting any proposed work). SEE RULE 1103. For Multiple Completions: Attach wellbore diagram of proposed completion or recompletion.

Burlington Resources proposes to construct a new drilling pit and an associated vent/flare pit. Based on Burlington's interpretation of the Ecosphere's risk ranking criteria, the new drilling pit and vent/flare pit will be an unlined pit as detailed in Burlington's Revised Drilling / Workover Pit Construction / Operation Procedures dated November 11, 2004 on file at the NMOCDD office. A portion of the vent/flare pit will be designed to manage fluids, and that portion will be unlined, as per the risk ranking criteria. Burlington Resources anticipates closing these pits according to the Drilling / Workover Pit Closure Procedure dated August 2, 2004 on file at the NMOCDD office



I hereby certify that the information above is true and complete to the best of my knowledge and belief. I further certify that a vent/flare pit or below-grade tank has been/will be constructed or closed according to NMOCDD guidelines ☐, a general permit ☒ or an (attached) alternative OCD-approved plan ☐.

SIGNATURE

Amanda Sandoval

TITLE

Regulatory Specialist

DATE

4/18/2005

Type or print name

Amanda Sandoval

E-mail address:

asandoval@br-inc.com

Telephone No.

505-326-9700

For State Use Only

APPROVED BY

TITLE

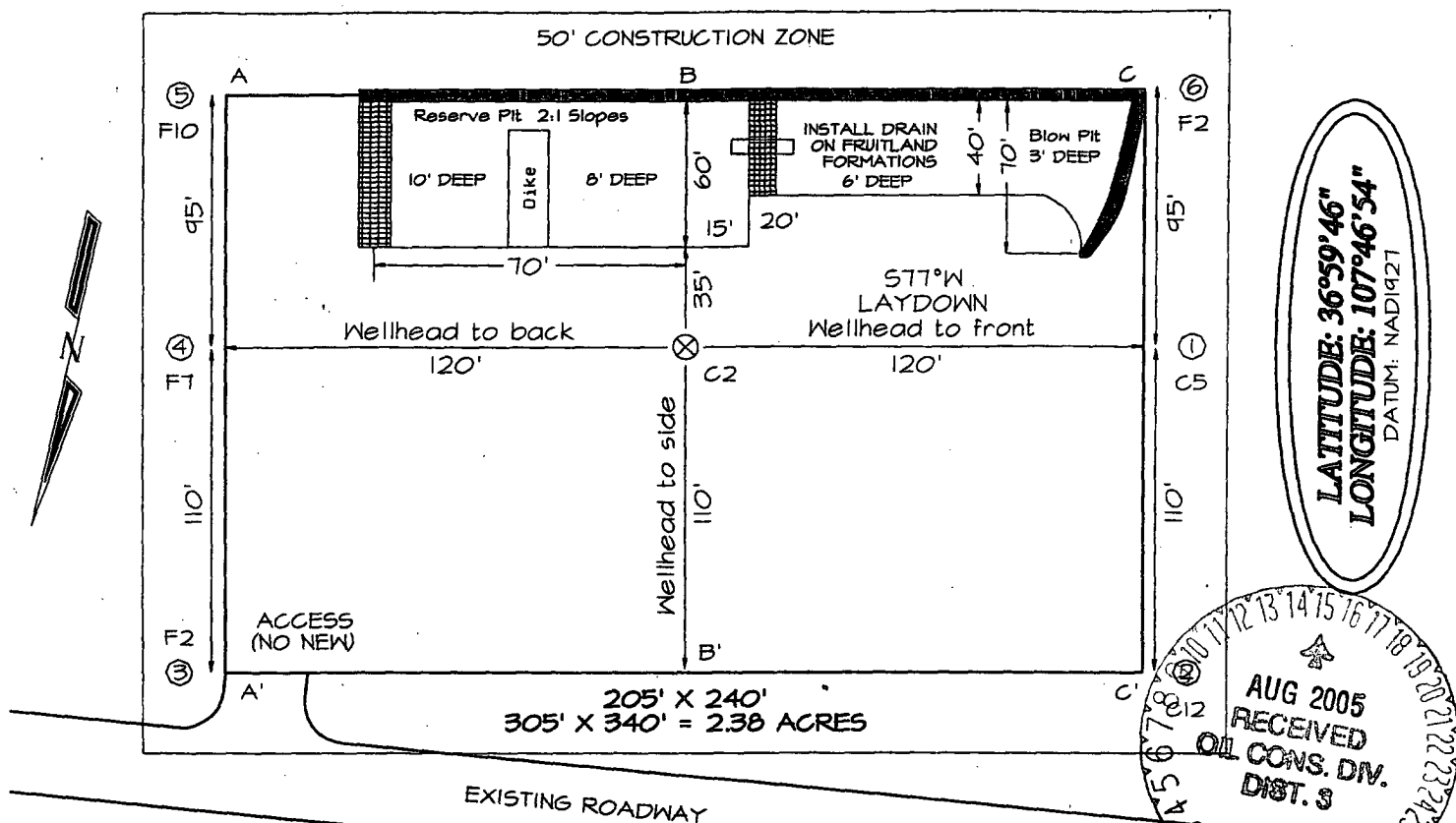
DEPUTY OIL & GAS INSPECTOR, DIST. 3

DATE

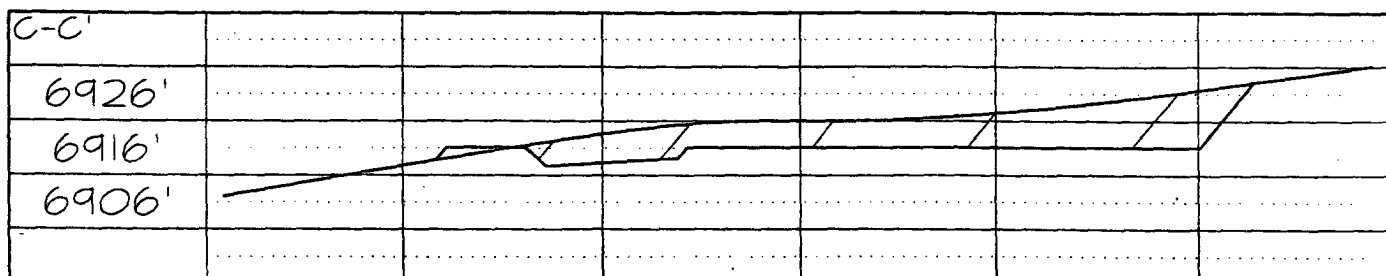
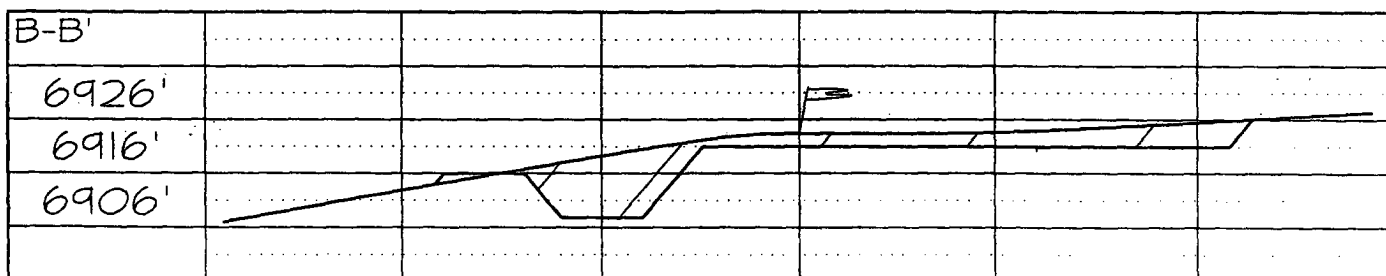
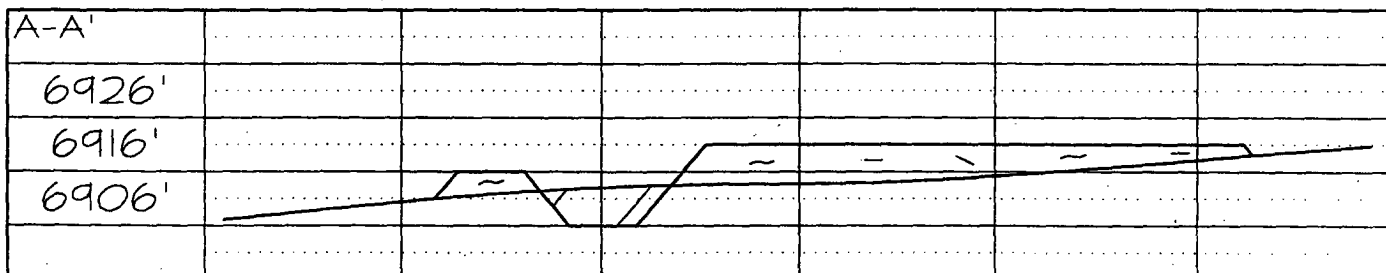
AUG 15 2005

Conditions of Approval (if any):

BURLINGTON RESOURCES OIL & GAS COMPANY SAN JUAN 32-9 UNIT #302S
1590' FSL & 1880' FEL, SECTION 9, T32N, R9W, NMPM, SAN JUAN COUNTY, NM
GROUND ELEVATION: 6918' DATE: MARCH 30, 2005



Reserve Pit Dike: to be 8' above Deep side (overflow - 3' wide and 1' above shallow side).
 Blow Pit: overflow pipe halfway between top and bottom and to extend over plastic liner and into blow pit.



Note: Contractor should call One-Call for location of any marked or unmarked buried pipelines or cables on well pad and/or access road at least two (2) working days prior to construction

OPERATIONS PLAN

Well Name: San Juan 32-9 Unit #302S

Location: 1590' FSL, 1880' FEL, Sec 9, T-32-N, R-9-W
San Juan County, NM

Latitude 36° 59.7678'N, Longitude 107° 46.9058'W

Formation: Basin Fruitland Coal

Total Depth: 3800'

Burlington Resources is requesting a sump on this well.

Logging Program: See San Juan 32-9 Unit Wells Master Operations Plan

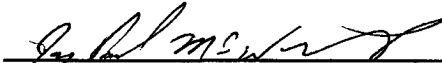
Mud Program: See San Juan 32-9 Unit Wells Master Operations Plan

Casing Program (as listed, the equivalent, or better):

Hole Size	Depth Interval	Csg	Wt.	Grade	Cement	
12 1/4	0' - 120	9.625"	32.3#	H-40	131	cu. ft
8 3/4	0' - 3447	7"	20.0#	J-55	781	cu. ft
6 1/4	3427' - 3800	5 1/2"	15.5#	J-55	uncemented	

Tubing Program: See San Juan 32-9 Unit Wells Master Operations Plan

- * The Fruitland Coal formation will be completed.
- * The whole section of Section 9 is dedicated to the Fruitland Coal formation in this well.
- * Gas is dedicated.

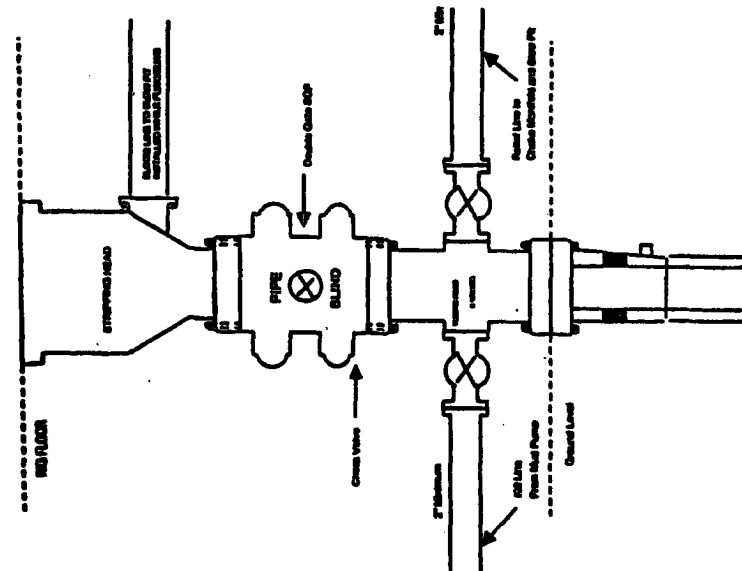

Drilling Engineer

4/27/05
Date



BURLINGTON RESOURCES

Completion/Workover Rig
BOP Configuration
2,000 psi System



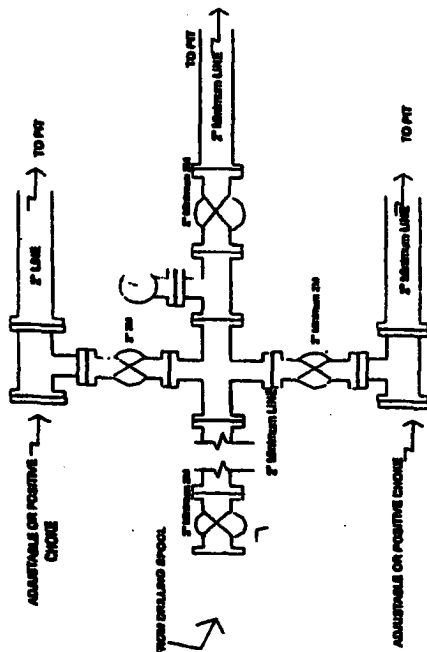
Minimum BOP installation for all Completion/Workover Operations. 7-1/16" bore, 2000 psi minimum working pressure double gate BOP to be equipped with blind and pipe rams. A stripping head to be installed on the top of the BOP. All BOP equipment is 2000 psi working pressure or greater excluding 600 psi stripping head.

Figure #2

4-20-01

BURLINGTON RESOURCES

Drilling Rig
Choke Manifold Configuration
2000 psi System



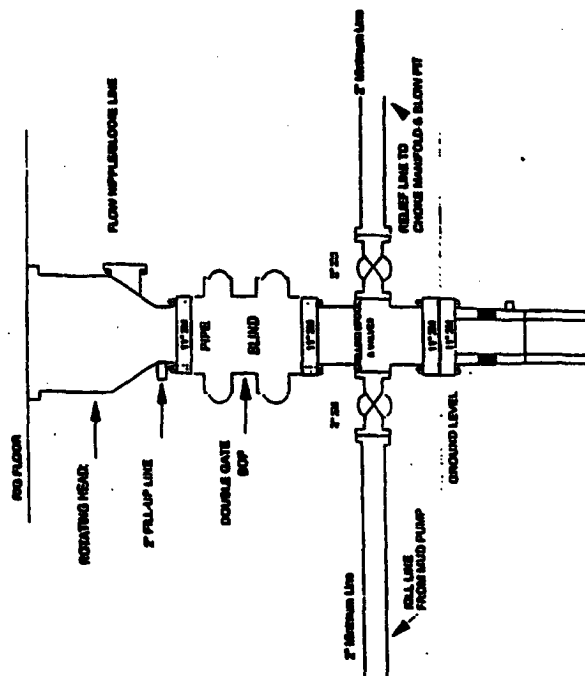
Choke manifold installation from Surface Casing Point to Total Depth. 2,000psi working pressure equipment with two chokes.

Figure #3

4-20-01

Burlington Resources

Drilling Rig
2000 psi System



BOP Installation from Surface Casing Point to Total Depth. 11" Bore 10" Minimum, 2000 psi working pressure double gate BOP to be equipped with blind rams and pipe rams. A 600 psi stripping head on top of ram preventers. All BOP equipment is 2,000 psi working pressure.

Figure #1

