

RECEIVED

MAY 19 2005

Form 3160-3
(September 2001)

Bureau of Land Management
Durango, Colorado

UNITED STATES
DEPARTMENT OF THE INTERIOR
BUREAU OF LAND MANAGEMENT

APPLICATION FOR PERMIT TO DRILL OR REENTER

FORM APPROVED
OMB No. 1004-0136
Expires January 31, 2004

5. Lease Serial No.
I-22-IND-2772

6. If Indian, Allottee or Tribe Name
Ute Mountain Ute

7. If Unit or CA Agreement, Name and No.

8. Lease Name and Well No.
Ute Mountain Ute #73

9. API Well No.
30-045-33302

10. Field and Pool, or Exploratory
Basin Dakota

11. Sec., T., R., M., or Blk. and Survey or Area
E Sec 23-32N-14W NMPM

12. County or Parish
San Juan

13. State
NM

1a. Type of Work: ☒ DRILL ☐ REENTER

1b. Type of Well: ☐ Oil Well ☒ Gas Well ☐ Other ☐ Single Zone ☐ Multiple Zone

2. Name of Operator
Burlington Resources

3a. Address 3401 E. 30th St.
Farmington, NM 87402

3b. Phone No. (include area code)
(505) 326-9700

4. Location of Well (Report location clearly and in accordance with any State requirements.)

At surface SWNW Lot E 1410' FNL & 845' FWL

At proposed prod. zone

14. Distance in miles and direction from nearest town or post office*
5 miles from La Plata

15. Distance from proposed*
location to nearest
property or lease line, ft. 845'
(Also to nearest drig. unit line, if any)

16. No. of Acres in lease
8,400

17. Spacing Unit dedicated to this well
~~10~~ acres 320 W/2

18. Distance from proposed location*
to nearest well, drilling, completed,
applied for, on this lease, ft. 2175.7

19. Proposed Depth
3,000

20. BLM/BIA Bond No. on file

21. Elevations (Show whether DF, KDB, RT, GL, etc.)
6239' GR

22. Approximate date work will start*

23. Estimated duration

Venting / Flaring approved for 60 days
per NTL-4A

24. Attachments

SEE ATTACHED
CONDITIONS OF APPROVAL

The following, completed in accordance with the requirements of Onshore Oil and Gas Order No.1, shall be attached to this form:

- Well plat certified by a registered surveyor.
- A Drilling Plan.
- A Surface Use Plan (if the location is on National Forest System Lands, the SUPO shall be filed with the appropriate Forest Service Office).

- Bond to cover the operations unless covered by an existing bond on file (see Item 20 above).
- Operator certification.
- Such other site specific information and/or plans as may be required by the authorized officer.

25. Signature *Catherine Smith*

Name (Printed/Typed)
Catherine Smith

Date
5/5/05

Title
Agent for Burlington Resources

Approved by (Signature)

Name (Printed/Typed)

APPROVED FOR A PERIOD
NOT TO EXCEED 1 YEAR.

Date
AUG 19 2005

Title */s/ Brian W. Davis*

Asst. Field Office Manager

Office

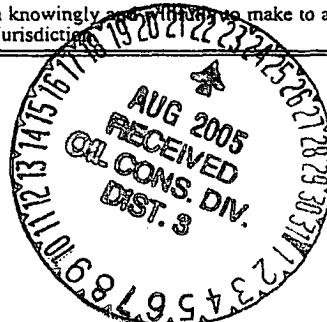
Application approval does not warrant or certify the the applicant holds legal or equitable title to those rights in the subject lease which would entitle the applicant to conduct operations thereon.

Conditions of approval, if any, are attached.

Title 18 U.S.C. Section 1001 and Title 43 U.S.C. Section 1212, make it a crime for any person knowingly and willfully to make to any department or agency of the United States any false, fictitious or fraudulent statements or representations as to any matter within its jurisdiction.

*(Instructions on reverse)

Approval of this agreement does not
warrant or certify that the operator
thereof and other holders of operating
rights hold legal or equitable title
to those rights in the subject lease
which are committed hereto...



MAILED

DISTRICT I
1625 N. French Dr., Hobbs, N.M. 88240

DISTRICT II
1301 W. Grand Ave., Artesia, N.M. 88210

DISTRICT III
1000 Rio Brazos Rd., Aztec, N.M. 87410

DISTRICT IV
1220 South St. Francis Dr., Santa Fe, NM 87505

State of New Mexico
Energy, Minerals & Natural Resources Department

OIL CONSERVATION DIVISION

1220 South St. Francis Dr.
Santa Fe, NM 87505

Form C-102
Revised June 10, 2003

Submit to Appropriate District Office
State Lease - 4 Copies
Fee Lease - 3 Copies

☐ AMENDED REPORT


WELL LOCATION AND ACREAGE DEDICATION PLAT

¹ API Number 30-045-33302	² Pool Code 71599	³ Pool Name Basin Dakota
⁴ Property Code 22660 18725	⁵ Property Name UTE MOUNTAIN UTE	⁶ Well Number 73
⁷ OGRID No. 14538	⁸ Operator Name BURLINGTON RESOURCES OIL & GAS COMPANY LP	⁹ Elevation 6239

¹⁰ Surface Location

UL or lot no.	Section	Township	Range	Lot Idn	Feet from the	North/South line	Feet from the	East/West line	County
E	23	32-N	14-W		1410	NORTH	845	WEST	SAN JUAN

¹¹ Bottom Hole Location If Different From Surface

UL or lot no.	Section	Township	Range	Lot Idn	Feet from the	North/South line	Feet from the	East/West line	County
¹² Dedicated Acres  320			¹³ Joint or Infill		¹⁴ Consolidation Code		¹⁵ Order No.		

NO ALLOWABLE WILL BE ASSIGNED TO THIS COMPLETION UNTIL ALL INTERESTS HAVE BEEN CONSOLIDATED
OR A NON-STANDARD UNIT HAS BEEN APPROVED BY THE DIVISION

16

17 OPERATOR CERTIFICATION

I hereby certify that the information contained herein is true and complete to the best of my knowledge and belief.

Catherine Smith
Signature

Catherine Smith

Printed Name _____

Agent for Burlington Res.

Title

4/30/05

Date _____

18 SURVEYOR CERTIFICATION

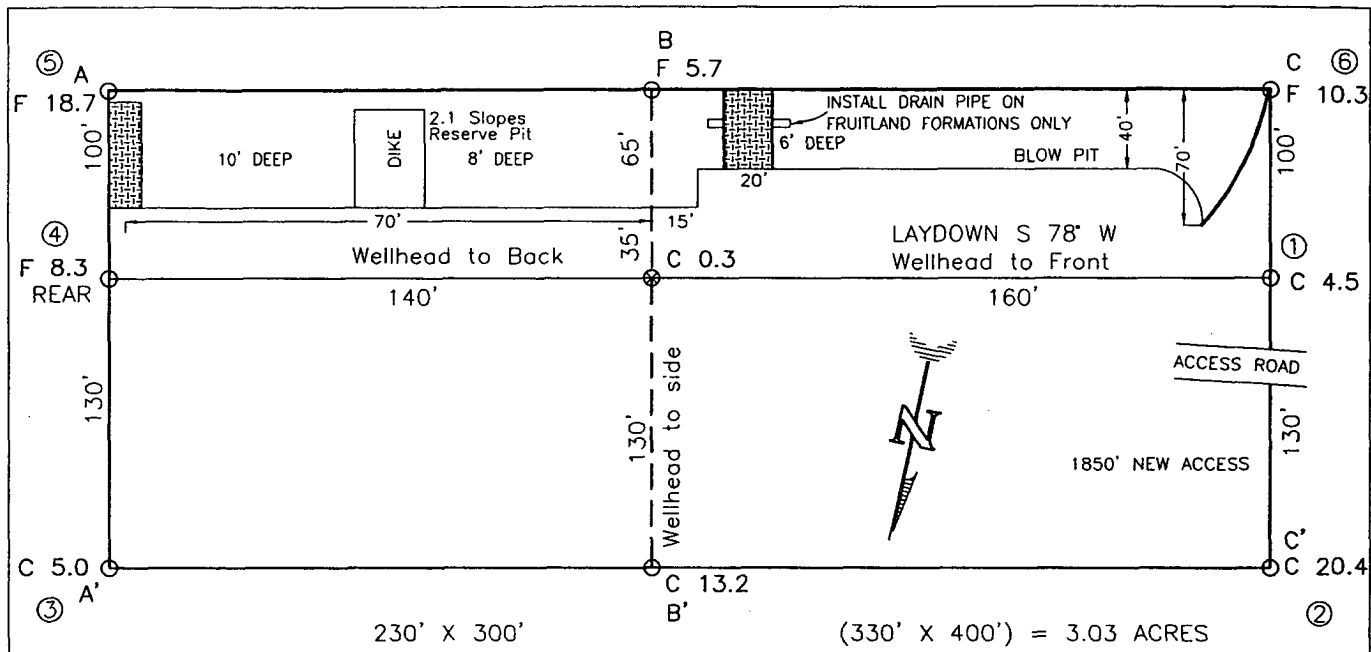
I hereby certify that the well location shown on this plat was plotted from field notes of actual surveys made by me or under my supervision, and that the same is true and correct to the best of my belief.

FEB 15 2004
 Date Surveyed
 Signature and Seal of Professional Surveyor:

Signature and Seal of Professional Surveyor:

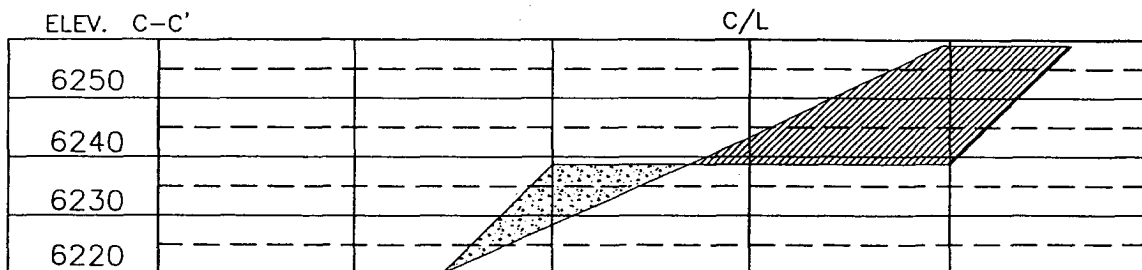
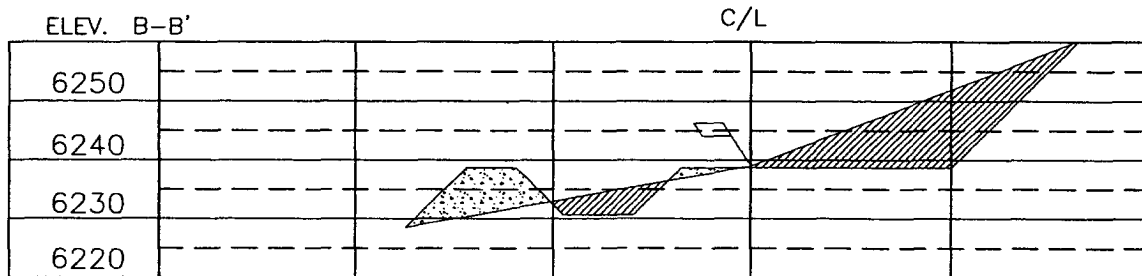
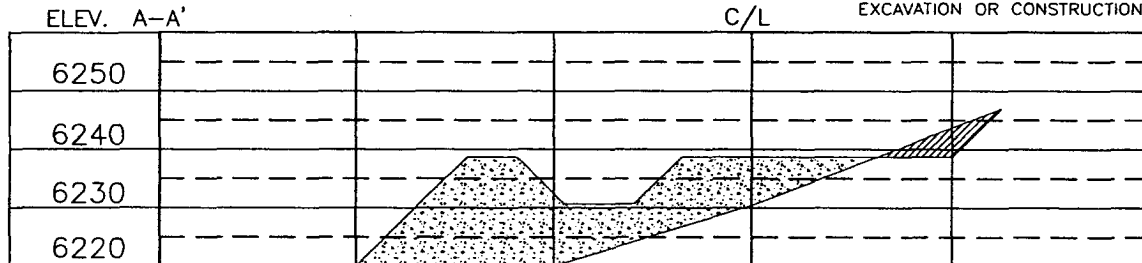
Certificate Number

HUNTINGTON ENERGY, LLC / BURLINGTON RESOURCES OIL & GAS COMPANY LP
 UTE MOUNTAIN UTE NO. 73, 1410 FNL 845 FWL
 SECTION 23, T-32-N, R-14-W, N.M.P.M., SAN JUAN COUNTY, NEW MEXICO
 GROUND ELEVATION: 6239, DATE: FEBRUARY 15, 2005



RESERVE PIT DIKE: TO BE 8' ABOVE DEEP SIDE (OVERFLOW - 3' WIDE AND 1' ABOVE SHALLOW SIDE).
 BLOW PIT: OVERFLOW PIPE HALFWAY BETWEEN TOP AND BOTTOM AND TO EXTEND OVER PLASTIC LINER AND INTO BLOW PIT.

NOTE: DAGGETT ENTERPRISES, INC. IS NOT LIABLE FOR UNDERGROUND UTILITIES OR PIPELINES. NEW MEXICO ONE CALL TO BE NOTIFIED 48 HOURS PRIOR TO EXCAVATION OR CONSTRUCTION.



NOTE: CONTRACTOR SHOULD CALL ONE-CALL FOR LOCATION OF ANY MARKED OR UNMARKED BURIED PIPELINES OR CABLES ON WELL PAD AND OR ACCESS ROAD AT LEAST TWO (2) WORKING DAYS PRIOR TO CONSTRUCTION.

REVISION:	DATE:	REVISED BY:

Daggett Enterprises, Inc.
 Surveying and Oil Field Services
 P. O. Box 15068 · Farmington, NM 87401
 Phone (505) 326-1772 · Fax (505) 326-6019
 NEW MEXICO L.S. No. 14831
 DRAWN BY: G.V. ROWE: HTG029
 CAPFILE: HTG029_CFB
 DATE: 3/11/05

OPERATIONS PLAN

Well Name: Ute Mountain Ute #73
Location: 1410' FNL, 845' FWL, SWNW Sec 23, T-32-N, R-14-W NMPM
San Juan, New Mexico
Formation: Wildcat Dakota
Elevation: 6239' GR

<u>Formation Tops:</u>	<u>Top</u>	<u>Bottom</u>	<u>Contents</u>
Mesaverde	Surface	530'	
Mancos	530'	1615'	
Gallup (Niobrara)	1615'	2285'	oil
Greenhorn	2285'	2340'	
Graneros	2340'	2510'	
Dakota	2510'	2740'	gas
Morrison	2740'	3000'	gas
TD	3000'		

Logging Program:

Mud log – 300' to TD
Open hole logs – DIL/SFL/GR/SP/ML – TD to surface casing
Cased hole logs– CBL/GR – TD to surface
Cores & DST's – none

Mud Program:

<u>Interval</u>	<u>Type</u>	<u>Weight</u>	<u>Vis.</u>	<u>Fluid Loss</u>
0 – 300'	Spud	8.4-9.0	40-50	no control
0 - 3000'	LSND	8.4-9.0	40-60	no control

Pit levels will be visually monitored to detect gain or loss of fluid control.

Casing Program (as listed, the equivalent, or better):

<u>Hole Size</u>	<u>Depth Interval</u>	<u>Csg. Size</u>	<u>Wt.</u>	<u>Grade</u>
11"	0 – 300'	7 5/8"	29.7#	P-110
6 1/4"	0 – 3000'	4 1/2"	10.5#	J-55

Tubing Program:

0 – 3000'	2 3/8"	4.7#	J-55
-----------	--------	------	------

BOP Specifications, Wellhead and Tests:

Surface to TD –

11" 2000 psi minimum double gate BOP stack (Reference Figure #1). After nipple-up prior to drilling out surface casing, rams and casing will be tested to 600 psi for 30 minutes.

2" nominal, 2000 psi minimum choke manifold (Reference Figure #3).

Completion Operations:

7 1/16" 2000 psi double gate BOP stack (Reference Figure #2). After nipple-up prior to completion, pipe rams, casing and liner top will be tested to 2000 psi for 15 minutes.

Float Equipment:

7 5/8" surface casing – saw tooth guide shoe.
Centralizers will be run in accordance with Onshore Order #2.

4 1/2" intermediate casing – guide shoe and self-fill float collar. Standard centralizers run every other joint above shoe. Standard centralizers thereafter every fourth joint up to the base of the surface pipe.

Wellhead:

7 5/8" x 4 1/2" x 2 3/8" x 2000 psi tree assembly.

General:

- Pipe rams will be actuated once each day and blind rams will be actuated once each trip to test proper functioning.
- An upper kelly cock valve with handle available and drill string valves to fit each drill string will be available on the rig floors at all times.
- BOP pit level drill will be conducted weekly for each drilling crew.
- All BOP tests and drills will be recorded in the daily drilling reports.
- Blind and pipe rams will be equipped with extension hand wheels.

Cementing:

7 5/8" surface casing –

Cement to surface w/174 sx Class A, B Portland Type I, II cement (244 cu. ft. of slurry). WOC 8 hours before pressure testing or drilling out from under surface casing.

4 1/2" production Casing -

Lead with 377 sx Premium Lite w/3% calcium chloride, 5pps LCM-1, and 1/4#/sack flocele, 0.4% FL-52, & 0.4% SMS. Tail w/90 sx Type III cement w/1% calcium chloride, 1/4#/sack flocele and 0.2% FL-52 (928 cu. ft., 50% excess to circulate to surface.)

Note: If open hole logs are run, cement volumes will be based on 25% excess over caliper volumes.

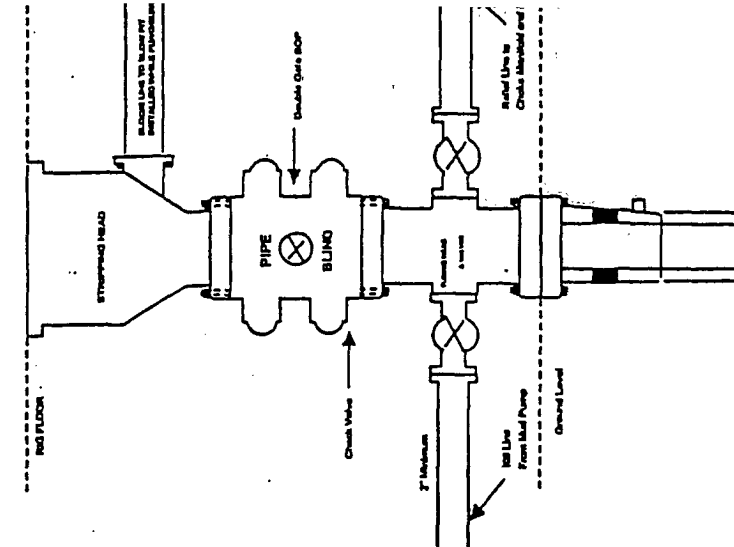
Saw tooth guide shoe on bottom. Bowspring centralizers will be run in accordance with Onshore Order #2.

- If hole conditions permit, an adequate water space will be pumped ahead of each cement job to prevent cement/mud contamination or cement hydration.

Additional Information:

- The Dakota formation will be completed.
- No abnormal temperatures or hazards are anticipated.
- Anticipated pore pressure for the Dakota is 750 psi.
- Sufficient LCM will be added to the mud system to maintain well control, if lost circulation is encountered.
- The northwest quarter of Section 23 is dedicated to this well. This gas is dedicated.

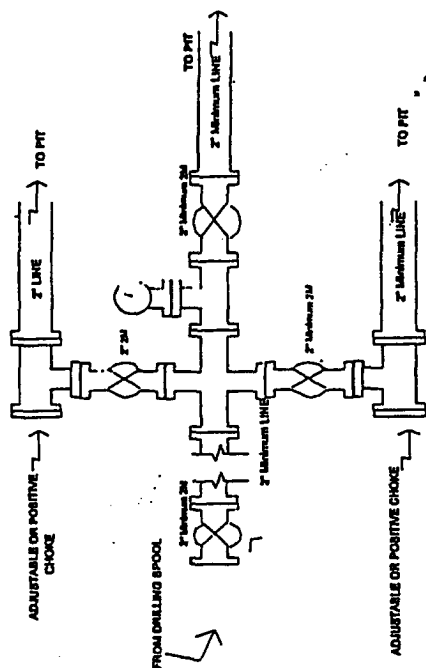
Completion/Workover Rig. BOP Configuration 2,000 psi System



Minimum BOP installation for all Completion/Workover Operations. 7-1/8" bore, 2000 psi minimum working pressure double gate BOP to be equipped with blind all pipe rams. A stripping head to be installed on the top of the BOP. All BOP equipment is 2000 psi working pressure or greater excluding 500 psi stripping head.

Figure #2

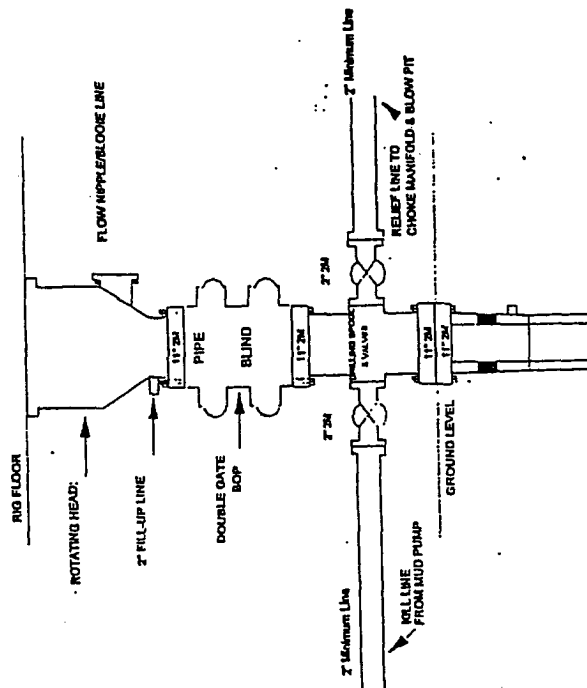
Drilling Rig Choke Manifold Configuration 2000 psi System



Choke manifold installation from Surface Casing Point to Total Depth. 2,000psi working pressure equipment with two chokes.

Figure #3

Drilling Rig 2000 psi System



BOP installation from Surface Casing Point to Total Depth. 11" Bore 10' Nominal, 2000 psi working pressure double gate BOP to be equipped with blind rams and pipe ram. A 500 psi rotating head on top of ram preventers. All BOP equipment is 2,000 psi working pressure

Figure #1