

District I
1625 N. French Dr., Hobbs, NM 88240
District II
1301 W. Grand Avenue, Artesia, NM 88210
District III
1000 Rio Brazos Road, Aztec, NM 87410
District IV
1220 S. St. Francis Dr., Santa Fe, NM 87505

State of New Mexico
Energy Minerals and Natural Resources

Form C-101
May 27, 2004

Oil Conservation Division
1220 South St. Francis Dr.
Santa Fe, NM 87505

Submit to appropriate District Office

☐ AMENDED REPORT

APPLICATION FOR PERMIT TO DRILL, RE-ENTER, DEEPEN, PLUGBACK, OR ADD A ZONE

¹ Operator Name and Address PURE RESOURCES LP C/O Mike Pippin 3104 N. Sullivan, Farmington, NM 87401		² OGRID Number 489071
³ Property Code 26629	⁴ Property Name RINCON UNIT	⁵ APL Number 30-30-037-29612
⁹ Proposed Pool 1 Blanco Mesaverde		¹⁰ Proposed Pool 2 Basin Dakota

7 Surface Location

UL or lot no.	Section	Township	Range	Lot Idn	Feet from the	North/South line	Feet from the	East/West line	County
E	36	27N	7W		2650'	North	330'	West	Rio Arriba

8 Proposed Bottom Hole Location If Different From Surface

UL or lot no.	Section	Township	Range	Lot Idn	Feet from the	North/South line	Feet from the	East/West line	County

Additional Well Information

¹¹ Work Type Code N	¹² Well Type Code G	¹³ Cable/Rotary R	¹⁴ Lease Type Code S	¹⁵ Ground Level Elevation 6635'
¹⁶ Multiple No	¹⁷ Proposed Depth 7600'	¹⁸ Formation MV & DK	¹⁹ Contractor None Yet	²⁰ Spud Date 3/1/06
Depth to Groundwater > 100'		Distance from nearest fresh water well > 1000'		Distance from nearest surface water > 1000'
Pit: Liner: Synthetic <input checked="" type="checkbox"/> 12 mils thick Clay <input type="checkbox"/> Pit Volume: 16,071 bbls Drilling Method: Closed-Loop System <input type="checkbox"/> Fresh Water <input checked="" type="checkbox"/> Brine <input type="checkbox"/> Diesel/Oil-based <input type="checkbox"/> Gas/Air <input type="checkbox"/>				

21 Proposed Casing and Cement Program

Hole Size	Casing Size	Casing weight/foot	Setting Depth	Sacks of Cement	Estimated TOC
12-1/4"	9-5/8" H-40	32.3#	350'	225	Surface
8-3/4"	7"	20#	2500'	327	Surface
6-1/4"	4-1/2" I-80	11.6#	7600'	600	Surface

22 Describe the proposed program. If this application is to DEEPEN or PLUG BACK, give the data on the present productive zone and proposed new productive zone. Describe the blowout prevention program, if any. Use additional sheets if necessary.

Drill 12-1/4" hole to 350' using fresh water mud. Run & cement 9-5/8" surface casing to surface. Nipple up 3000# BOPE. Pressure test surface casing & BOPE to minimum of 600 psig for 15 minutes. Drill 8-3/4" hole to 2500' using polymer & water. Run 7" intermediate casing & cement to surface in a single stage. Pressure test intermediate casing & BOPE to minimum 1500 psi for 15 minutes. Drill 6-1/4" hole with air mist to TD. Run 4-1/2" casing & cement to surface in a single stage. Move out drilling rig. Move in completion equipment. Run cased hole correlation log. Test production casing to 6000 psig for 15 minutes. Perforate select Dakota intervals & stimulate with a sand frac. Perf select MV intervals & stimulate with a sand frac. Install production equipment. 2-3/8" tubing, and gas sales meter. Complete as a commingled MV/DK well. The pit liner will meet OCD guidelines

HOLD ON FOR NGL in Mesaverde

23 I hereby certify that the information given above is true and complete to the best of my knowledge and belief. I further certify that the drilling pit will be constructed according to NMOCD guidelines ☒, a general permit ☐, or an (attached) alternative OCD-approved plan ☐.

Printed name: Mike Pippin

Title: Agent - Petroleum Engineer

E-mail Address: mpippin@ddbroadband.net

Date: 8/8/05

Phone: 505-327-4573

OIL CONSERVATION DIVISION

Approved by:

Title: **DEPUTY OIL & GAS INSPECTOR, DIST. 23**

Approval Date: **AUG 04 2005** Expiration Date:

Conditions of Approval Attached ☐

DISTRICT I
1625 N. French Dr., Hobbs, N.M. 88240

DISTRICT II
1301 W. Grand Ave., Artesia, N.M. 88210

DISTRICT III
1000 Rio Brazos Rd., Aztec, N.M. 87410

DISTRICT IV
1220 South St. Francis Dr., Santa Fe, NM 87505

State of New Mexico
Energy, Minerals & Natural Resources Department
OIL CONSERVATION DIVISION
1220 South St. Francis Dr.
Santa Fe, NM 87505

Form C-102
Revised June 10, 2003

Submit to Appropriate District Office
State Lease - 4 Copies
Fee Lease - 3 Copies

☐ AMENDED REPORT

WELL LOCATION AND ACREAGE DEDICATION PLAT

*API Number		*Pool Code	*Pool Name
		72319 71599	BLANCO MESAVERDE + BASIN DAKOTA
*Property Code	*Property Name		*Well Number
26629	RINCON UNIT		513
*OGRID No.	*Operator Name		*Elevation
189071	PURE RESOURCES		6635'

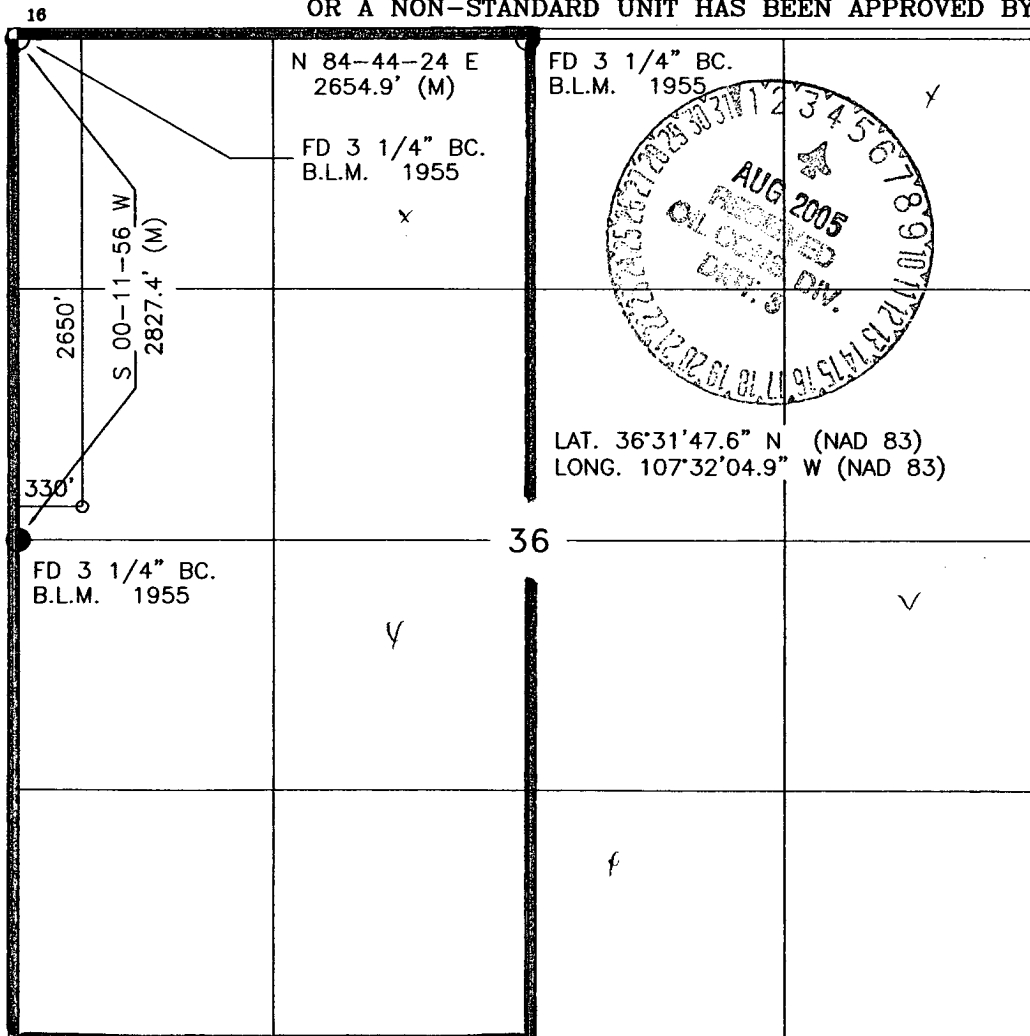
¹⁰ Surface Location

UL or lot no.	Section	Township	Range	Lot Idn	Feet from the	North/South line	Feet from the	East/West line	County
E	36	27-N	7-W		2650	NORTH	330	WEST	RIO ARriba

¹¹ Bottom Hole Location If Different From Surface

UL or lot no.	Section	Township	Range	Lot Idn	Feet from the	North/South line	Feet from the	East/West line	County
¹² Dedicated Acres		¹³ Joint or Infill		¹⁴ Consolidation Code		¹⁵ Order No.			
320 w/2		Y							

NO ALLOWABLE WILL BE ASSIGNED TO THIS COMPLETION UNTIL ALL INTERESTS HAVE BEEN CONSOLIDATED
OR A NON-STANDARD UNIT HAS BEEN APPROVED BY THE DIVISION



17 OPERATOR CERTIFICATION

I hereby certify that the information contained herein
is true and complete to the best of my knowledge and
belief.

Mike Pippin
Signature

MIKE PIPPIN
Printed Name

AGENT - PETR. ENGR.
Title

8-4-05
Date

18 SURVEYOR CERTIFICATION

I hereby certify that the well location shown on this plat
was plotted from field notes of actual surveys made by
me or under my supervision, and that the same is true
and correct to the best of my belief.

JOHN A. VUKOBICH
Signature and Seal of Professional Surveyor
14831
19-0
PROFESSIONAL SURVEYOR

Certificate Number