

RECEIVED

UNITED STATES  
DEPARTMENT OF THE INTERIOR  
BUREAU OF LAND MANAGEMENTFORM APPROVED  
OMB No. 1004-0137  
Expires: July 31, 2010

DEC 03 2012

## SUNDRY NOTICES AND REPORTS ON WELLS

~~Farmington~~ Do not use this form for proposals to drill or to re-enter an  
abandoned well. Use Form 3160-3 (APD) for such proposals.

SUBMIT IN TRIPLICATE - Other instructions on page 2.

## 1. Type of Well

☐ Oil Well ☒ Gas Well ☐ Other

## 2. Name of Operator

ConocoPhillips Company

## 3a. Address

PO Box 4289, Farmington, NM 87499

## 3b. Phone No. (include area code)

(505) 326-9700

## 4. Location of Well (Footage, Sec., T., R., M., or Survey Description)

Surface Unit E (SWNW), 1100' FNL &amp; 1450' FWL, Sec. 2, T25N, R4W

## 5. Lease Serial No.

Contract 121

## 6. If Indian, Allottee or Tribe Name

Jicarilla Apache

## 7. If Unit of CA/Agreement, Name and/or No.

## 8. Well Name and No.

AXI Apache N 17

## 9. API Well No.

30-039-22949

## 10. Field and Pool or Exploratory Area

South Blanco Pictured Cliffs

## 11. Country or Parish, State

Rio Arriba, New Mexico

## 12. CHECK THE APPROPRIATE BOX(ES) TO INDICATE NATURE OF NOTICE, REPORT OR OTHER DATA

## TYPE OF SUBMISSION

## TYPE OF ACTION

☒ Notice of Intent☐ Acidize☐ Deepen☐ Production (Start/Resume)☐ Water Shut-Off☐ Subsequent Report☐ Alter Casing☐ Fracture Treat☐ Reclamation☐ Well Integrity☐ Final Abandonment Notice☐ Casing Repair☐ New Construction☐ Recomplete☐ Other☐ Change Plans☒ Plug and Abandon☐ Temporarily Abandon☐ Convert to Injection☐ Plug Back☐ Water Disposal

## 13. Describe Proposed or Completed Operation: Clearly state all pertinent details, including estimated starting date of any proposed work and approximate duration thereof.

If the proposal is to deepen directionally or recompleat horizontally, give subsurface locations and measured and true vertical depths of all pertinent markers and zones. Attach the bond under which the work will be performed or provide the Bond No. on file with BLM/BIA. Required subsequent reports must be filed within 30 days following completion of the involved operations. If the operation results in a multiple completion or recompleat in a new interval, a Form 3160-4 must be filed once Testing has been completed. Final Abandonment Notices must be filed only after all requirements, including reclamation, have been completed and the operator has determined that the site is ready for final inspection.)

ConocoPhillips requests permission to P&A the subject well per the attached procedure, current and proposed wellbore schematics.

# Extend Nac. plug down to 2040'

RCVD DEC 11 '12  
OIL CONS. DIV.  
DIST. 3Notify NMOCD 24 hrs  
prior to beginning  
operations

## 14. I hereby certify that the foregoing is true and correct. Name (Printed/Typed)

Dollie L. Busse

Title Staff Regulatory Technician

Signature

Date

11/30/12

## THIS SPACE FOR FEDERAL OR STATE OFFICE USE

## Approved by

Original Signed: Stephen Mason

Title

Date

DEC 07 2012

Conditions of approval, if any, are attached. Approval of this notice does not warrant or certify that the applicant holds legal or equitable title to those rights in the subject lease which would entitle the applicant to conduct operations thereon.

Office

Title 18 U.S.C. Section 1001 and Title 43 U.S.C. Section 1212, make it a crime for any person knowingly and willfully to make to any department or agency of the United States any false, fictitious or fraudulent statements or representations as to any matter within its jurisdiction.

(Instruction on page 2)

NMOCD A

**ConocoPhillips**  
**AXI APACHE N 17**  
**Expense - P&A**

Lat 36° 25' 57.544" N

Long 107° 13' 31.44" W

**PROCEDURE**

**Note:** This project requires a NMOCD C-144 CLEZ Closed-Loop System Permit for the use of an A-Plus steel tank to handle waste fluids circulated from the well and cement wash up. All cement volumes use 100% excess outside pipe and 50' excess inside pipe. The stabilizing wellbore fluid will be 8.3 ppg, sufficient to balance all exposed formation pressures. All cement will be ASTM Type II mixed at 15.6 ppg with a 1.18 cf/sk yield. **Plug depths may change per CBL.**

1. Hold pre-job safety meeting. Comply with all NMOCD, BLM, and COPC safety and environmental regulations. Test rig anchors prior to moving in rig.
2. MIRU workover rig. Check casing, tubing, and bradenhead pressures and record them in Wellview.
3. When an existing primary valve (i.e. casing valve) is to be used, the existing piping should be removed and replaced with the appropriate piping for the intended operation.
4. RU blow lines from casing valves and begin blowing down casing pressure. Kill well with water, if necessary.
5. ND wellhead and NU BOPE. Pressure test and function test BOP.

<b>Rods:</b>	No	<b>Size:</b>	<b>Length:</b>
<b>Tubing:</b>	No	<b>Size:</b>	<b>Length:</b>
<b>Packer:</b>	No	<b>Size:</b>	<b>Depth:</b>

6. Run casing scraper from top of perforations to surface (top perf @ 3757').

7. RIH and set a cement retainer at 3707'. Load casing with water and attempt to establish circulation. Pressure test tubing to 1000 psi. Pressure test casing to 600 psi. If casing does not test, then spot and tag subsequent plugs as necessary. **Run CBL and adjust plugs accordingly.**

**8. Plug 1 (Pictured Cliffs Perfs, Fruitland, Kirtland, and Ojo Alamo Formation Tops, 3707' - 3248', 22 Sacks Class B Cement)**

Mix 22 sx Class B cement and spot inside the casing above CR to isolate the Pictured Cliffs perforations, Pictured Cliffs formation top, Fruitland formation top, Kirtland formation top, and Ojo Alamo formation top. POOH.

**9. Plug 2 (Nacimiento Formation Top, <sup>1987 1887 35</sup>1857' - <sup>1887 35</sup>1757', 32 Sacks Class B Cement)**

Perforate 3 HSC holes at 1857'. Set a cement retainer at 1807'. TIH with tubing and sting into CR. Establish injection rate into squeeze holes. Mix <sup>35</sup>32 sx Class B cement. Sqz 25 sx Class B cement into HSC holes and leave 7 sx cement inside casing to isolate the Nacimiento formation top. POOH and LD workstring. <sup>24</sup>

**10. Plug 3 (Surface Casing Shoe & Surface Plug, 296' - 0', 67 Sacks Class B cement)**

Perforate 3 HSC holes at 296'. Establish circulation out bradenhead with water and circulate BH annulus clean. Mix 67 sx Class B cement and pump down production casing to circulate good cement out bradenhead. Shut in well and WOC.

11. Nipple down BOP and cut off casing below the casing flange. Install P&A marker with cement to comply with regulations. Rig down, move off location, cut off anchors, and restore location.

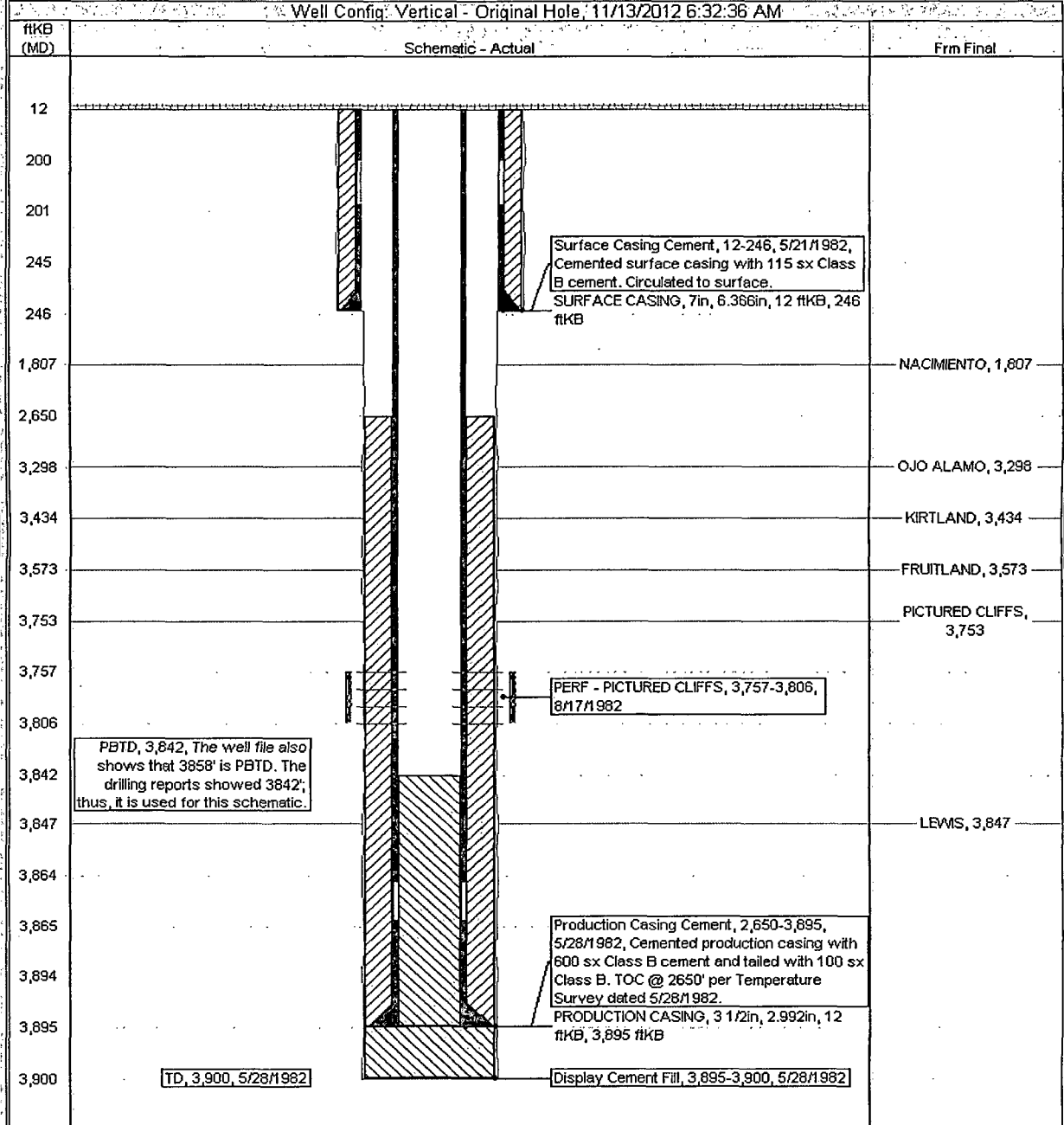
# Current Schematic - Version 3

ConocoPhillips

Well Name: AXI APACHE N #17

API/UVI 3003922949	Surface Legal Location NMMPM-25N-04W-02-C	Field Name PC	License No.	State/Province NEW MEXICO	Well Configuration Type Vertical	Edit
Ground Elevation (ft) 7,185.00	Original KB/RT Elevation (ft) 7,197.00	KB-Grout Distance (ft) 12.00	KB-Casing Flange Distance (ft) 7,197.00	KB-Tubing Hanger Distance (ft) 7,197.00		

Well Config: Vertical - Original Hole, 11/13/2012 6:32:36 AM



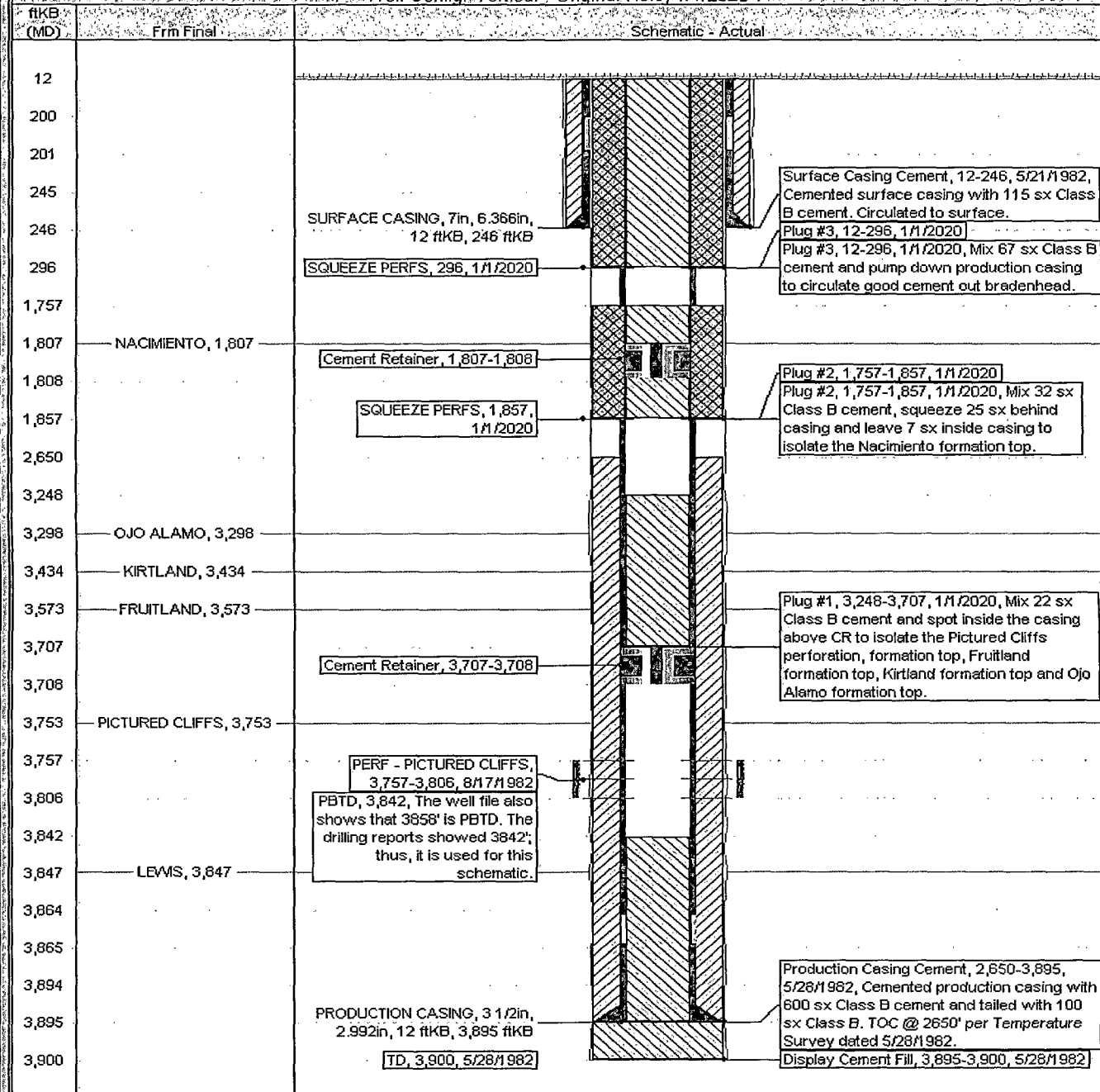
# Proposed Schematic

ConocoPhillips

Well Name: AXI APACHE N#17

API/UWI 3003922949	Surface Legal Location NMPM-25N-04W-02-C	Field Name PC	License No.	State/Province NEW MEXICO	Well Configuration Type Vertical	Edit
Ground Elevation (ft) 7,185.00	Original BPT Elevation (ft) 7,197.00	118-Ground Distance (ft) 12.00	118-Casing Flange Distance (ft) 7,197.00	118-Tabling Hanger Distance (ft) 7,197.00		

Well Config: Vertical - Original Hole: 1/1/2020



**UNITED STATES DEPARTMENT OF THE INTERIOR  
BUREAU OF LAND MANAGEMENT  
FARMINGTON DISTRICT OFFICE  
6251 COLLEGE BLVD.  
FARMINGTON, NEW MEXICO 87402**

Attachment to notice of  
Intention to Abandon:

Re: Permanent Abandonment  
Well: 17 AXI Apache N

**CONDITIONS OF APPROVAL**

1. Plugging operations authorized are subject to the attached "General Requirements for Permanent Abandonment of Wells on Federal and Indian Lease."
2. Farmington Office is to be notified at least 24 hours before the plugging operations commence (505) 564-7750.
3. The following modifications to your plugging program are to be made:
  - a) Place the Nacimiento plug from 1987' - 1887' inside and outside the 3 ½" casing.

You are also required to place cement excesses per 4.2 and 4.4 of the attached General Requirements.

Office Hours: 7:45 a.m. to 4:30 p.m.