



NEW MEXICO ENERGY, MINERALS  
& NATURAL RESOURCES DEPARTMENT

OIL CONSERVATION DIVISION  
AZTEC DISTRICT OFFICE  
1000 RIO BRAZOS ROAD  
AZTEC NM 87410  
(505) 334-6178 FAX: (505) 334-6170  
[http://emnr.state.nm.us/ocd/District III/3district.htm](http://emnr.state.nm.us/ocd/District%20III/3district.htm)

RCVD AUG 1 '13  
OIL CONS. DIV.  
DIST. 3

BRADENHEAD TEST REPORT

(submit 1 copy to above address)

Date of Test 8-1-13 Operator BP America API #30-0 45-22134  
Property Name Leepu GC Well No. 1A Location: Unit C Section 34 Township 32 Range 10  
Well Status(Shut-In or Producing) Initial PSI: Tubing 138 Intermediate 135 Casing 127 Bradenhead 0

OPEN BRADENHEAD AND INTERMEDIATE TO ATMOSPHERE INDIVIDUALLY FOR 15 MINUTES EACH

Testing	PRESSURE			INTERM	
	BH	Int	Csg	Int	Csg
TIME					
5 min	0	135	129	1	129
10 min	0	135	129	1	129
15 min	0	135	129	1	129
20 min	0	135	129	1	129
25 min	0	135	129	1	129
30 min	0	135	129	1	129

	FLOW CHARACTERISTICS	
	BRADENHEAD	INTERMEDIATE
Steady Flow		✓
Surges		
Down to Nothing		
Nothing	✓	
Gas		/ + drip
Gas & Water		
Water		

If bradenhead flowed water, check all of the descriptions that apply below:

CLEAR \_\_\_\_\_ FRESH \_\_\_\_\_ SALTY \_\_\_\_\_ SULFUR \_\_\_\_\_ BLACK \_\_\_\_\_

5 MINUTE SHUT-IN PRESSURE BRADENHEAD 0 INTERMEDIATE 140

REMARKS: BH nothing when opened. Gas sample taken.  
Shut. Hand blow when opened & flowed 1 quart drip.  
Med light blow for full 30 min.  
By Ray Fedema Witness Moussa Kuehling  
Tack  
(Position)

E-mail address \_\_\_\_\_

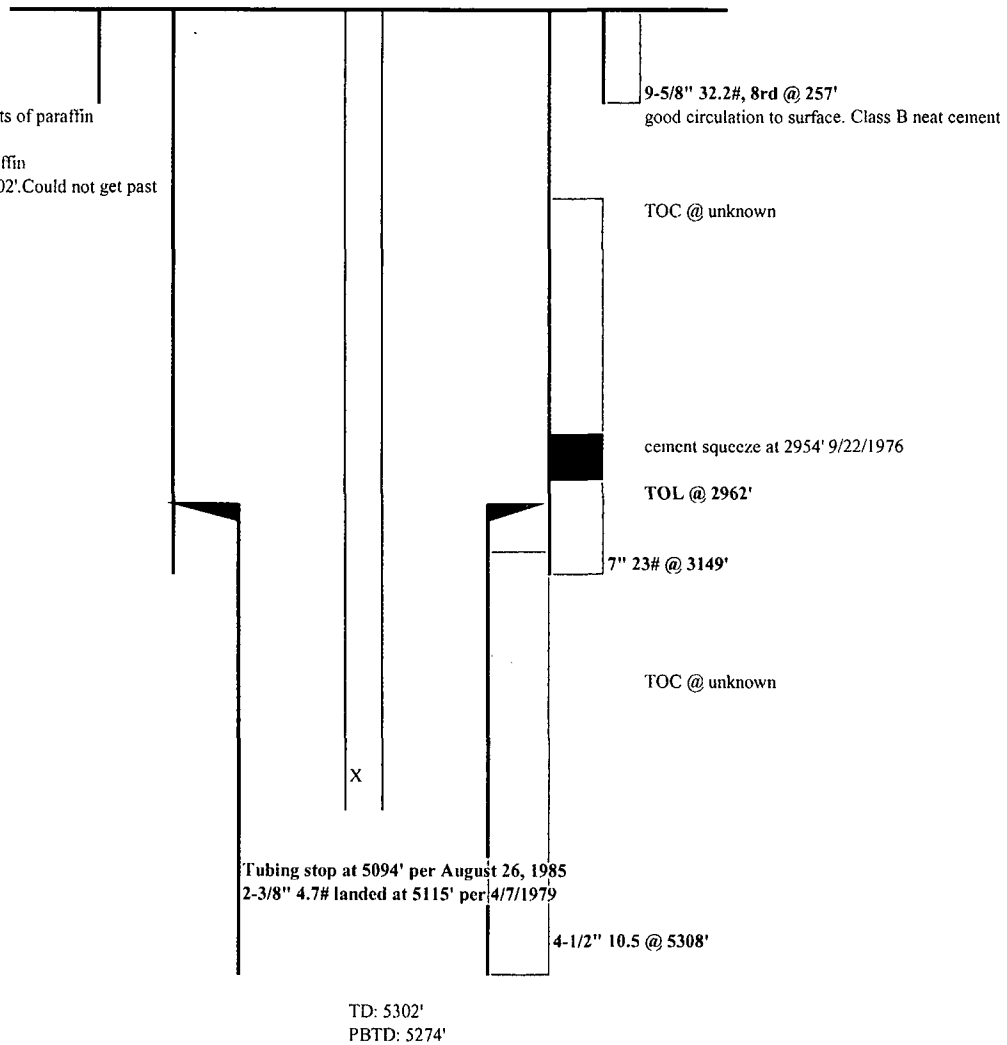
## Leeper GC 1A

Sec C 34-32N-10W

API #: 30-04522134

### History:

11/1/1977 - installed plunger - lots of paraffin  
4/7/1979 - repaired csg leak  
1/25/81 - tubing repair due to paraffin  
7/22/2011 - Tag fluid level at 5002'. Could not get past SN. Set tubing stop at 5077'



### MV Perfs: 9/30/76

4580-4864 45K gal frac fluid w/ 90K# 20/40 sd  
4898 -5121 67500 gal w/ 135K# 20/40 sand

Updated: 1/14/2013 Michelle Boit