

District I
1625 N. French Drive, Hobbs, NM 88240
Phone: (575) 393-6161 Fax: (575) 393-0720

District II
811 S. First Street, Artesia, NM 88210
Phone: (575) 748-1283 Fax: (575) 748-9720

District III
1000 Rio Brazos Road, Aztec, NM 87410
Phone: (505) 334-6178 Fax: (505) 334-6170

District IV
1220 S. St. Francis Drive, Santa Fe, NM 87505
Phone: (505) 476-3460 Fax: (505) 476-3462

State of New Mexico
Energy, Minerals & Natural Resources Department

Form C-102
Revised August 1, 2011

Submit one copy to
Appropriate District Office

OIL CONSERVATION DIVISION
1220 South St. Francis Drive
Santa Fe, NM 87505

AMENDED REPORT

AS-DRILLED

WELL LOCATION AND ACREAGE DEDICATION PLAT

¹ API Number 30-043-21161	² Pool Code 42289	³ Pool Name LYBROOK GALLUP
⁴ Property Code 39969	⁵ Property Name CHACO 2206-16I	
⁶ CGRID No. 120782	⁷ Operator Name WPX ENERGY PRODUCTION, LLC	⁸ Well Number 224H
		⁹ Elevation 7194'

¹⁰ Surface Location

UL or lot no.	Section	Township	Range	Lot Idn	Feet from the	North/South line	Feet from the	East/West line	County
I	16	22N	6W		1458	SOUTH	290	EAST	SANDOVAL

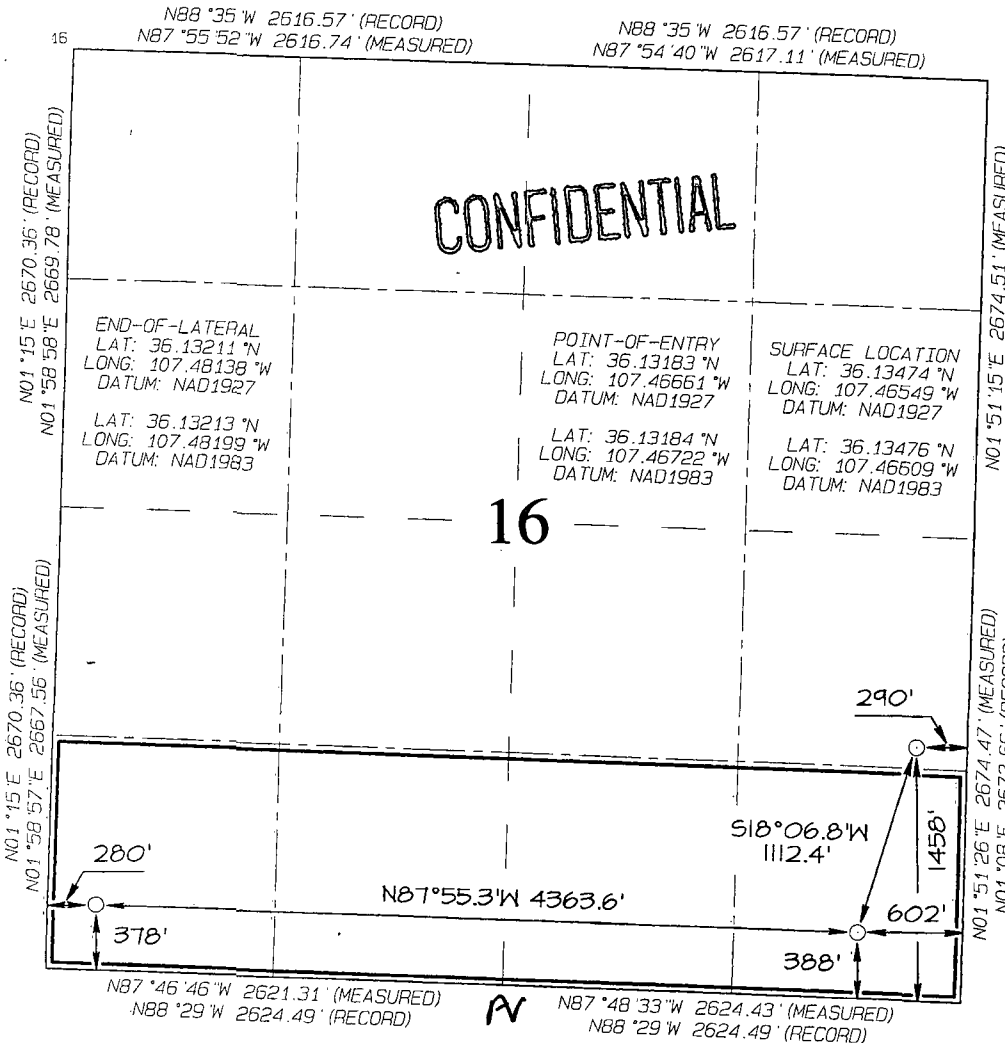
¹¹ Bottom Hole Location If Different From Surface

UL or lot no.	Section	Township	Range	Lot Idn	Feet from the	North/South line	Feet from the	East/West line	County
M	16	22N	6W		378	SOUTH	280	WEST	SANDOVAL

¹² Dedicated Acres 160.0 Acres - (S/2 S/2)	¹³ Joint or Infill	¹⁴ Consolidation Code	¹⁵ Order No. ROVD SEP 30 '13 OIL CONS. DIV.
--	-------------------------------	----------------------------------	--

NO ALLOWABLE WILL BE ASSIGNED TO THIS COMPLETION UNTIL ALL INTERESTS HAVE BEEN CONSOLIDATED OR A NON-STANDARD UNIT HAS BEEN APPROVED BY THE DIVISION

DIST. 3



¹⁷ OPERATOR CERTIFICATION:

I hereby certify that the information contained herein is true and complete to the best of my knowledge and belief, and that this organization either owns a working interest or unleased mineral interest in the land including the proposed bottom-hole location or has a right to drill this well at this location pursuant to a contract with an owner of such a mineral or working interest, or to a voluntary pooling agreement or a compulsory pooling order heretofore entered by the division.

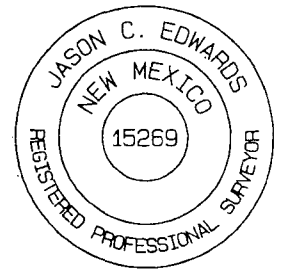
Heather Riley 9/30/13
Signature Date
Heather Riley
Printed Name
heather.riley@wpxenergy.com
E-mail Address

¹⁸ SURVEYOR CERTIFICATION

I hereby certify that the well location shown on this plat was plotted from field notes of actual surveys made by me or under my supervision, and that the same is true and correct to the best of my belief.

Date Revised: AUGUST 31, 2013
Date of Survey: JUNE 21, 2012

Signature and Seal of Professional Surveyor



JASON C. EDWARDS
Certificate Number 15269

Table with columns: Comments, MD (ft), Incl (*), Azim True (*), TVD (ft), VSEC (ft), NS (ft), EW (ft), DLS (*/100ft), Northing (ftUS), Easting (ftUS), Latitude (N/S *'"), Longitude (E/W *'"). Rows include MD values from 5316.00 to 10209.00 and corresponding survey data.

Survey Type: Def Survey
Survey Error Model: ISCWSA Rev 0 *** 3-D 95.000% Confidence 2.7955 sigma
Survey Program:

Table with columns: Description, MD From (ft), MD To (ft), EOU Freq (ft), Hole Size (in), Casing Diameter (in), Survey Tool Type, Borehole / Survey. Rows describe MD intervals and corresponding tool types like SLB_MWD-STD and SLB_BLIND+TREND.