

UNITED STATES
DEPARTMENT OF THE INTERIOR
BUREAU OF LAND MANAGEMENT

MAR 27 2014

FORM APPROVED
OMB No. 1004-0137
Expires: July 31, 2010

5. Lease, Serial No. **SF-047020B**
6. If Indian, Allottee or Tribe Name

SUNDRY NOTICES AND REPORTS ON WELLS
Do not use this form for proposals to drill or to re-enter an abandoned well. Use Form 3160-3 (APD) for such proposals.

SUBMIT IN TRIPLICATE - Other instructions on page 2.

1. Type of Well

☐ Oil Well ☒ Gas Well ☐ Other

2. Name of Operator

Burlington Resources Oil & Gas Company LP

3a. Address

PO Box 4289, Farmington, NM 87499

3b. Phone No. (include area code)

(505) 326-9700

7. If Unit of CA/Agreement, Name and/or No.

8. Well Name and No.

Congress 14

9. API Well No.

30-045-25658

10. Field and Pool or Exploratory Area

Armenta Gallup

4. Location of Well (Footage, Sec., T., R., M., or Survey Description)

Surface Unit A (NENE), 445' FNL & 953' FEL, Sec. 35, T29N, R11W

11. Country or Parish, State

San Juan New Mexico

12. CHECK THE APPROPRIATE BOX(ES) TO INDICATE NATURE OF NOTICE, REPORT OR OTHER DATA

TYPE OF SUBMISSION

☒ Notice of Intent

☐ Subsequent Report

☐ Final Abandonment Notice

TYPE OF ACTION

☐ Acidize

☐ Alter Casing

☐ Casing Repair

☐ Change Plans

☐ Convert to Injection

☐ Deepen

☐ Fracture Treat

☐ New Construction

☒ Plug and Abandon

☐ Plug Back

☐ Production (Start/Resume)

☐ Reclamation

☐ Recomplete

☐ Temporarily Abandon

☐ Water Disposal

☐ Water Shut-Off

☐ Well Integrity

☐ Other

13. Describe Proposed or Completed Operation: Clearly state all pertinent details, including estimated starting date of any proposed work and approximate duration thereof. If the proposal is to deepen directionally or recompleat horizontally, give subsurface locations and measured and true vertical depths of all pertinent markers and zones. Attach the bond under which the work will be performed or provide the Bond No. on file with BLM/BIA. Required subsequent reports must be filed within 30 days following completion of the involved operations. If the operation results in a multiple completion or recompleat in a new interval, a Form 3160-4 must be filed once Testing has been completed. Final Abandonment Notices must be filed only after all requirements, including reclamation, have been completed and the operator has determined that the site is ready for final inspection.)

Burlington Resources requests permission to P&A the subject well bore per the attached procedure, current & proposed wellbore schematics. The Pre-Disturbance onsite was held w/ Bob Switzer on 3/20/14. The re-vegetation plan is attached. A Closed loop system will be utilized for this P&A.

RCVD APR 1 '14
OIL CONS. DIV.
DIST. 3

**Notify NMOCD 24 hrs
prior to beginning
operations**

14. I hereby certify that the foregoing is true and correct. Name (Printed/Typed)

Kenny Davis

Title **Staff Regulatory Technician**

Signature

Date

3/26/2014

THIS SPACE FOR FEDERAL OR STATE OFFICE USE

Approved by

Original Signed: Stephen Mason

Title

Date

MAR 28 2014

Conditions of approval, if any, are attached. Approval of this notice does not warrant or certify that the applicant holds legal or equitable title to those rights in the subject lease which would entitle the applicant to conduct operations thereon.

Office

Title 18 U.S.C. Section 1001 and Title 43 U.S.C. Section 1212, make it a crime for any person knowingly and willfully to make to any department or agency of the United States any false, fictitious or fraudulent statements or representations as to any matter within its jurisdiction.

ConocoPhillips
CONGRESS 14
Expense - P&A

Lat 36° 41' 18.348" N

Long 107° 57' 17.424" W

PROCEDURE

This project requires the use of an A-Plus steel tank to handle waste fluids circulated from the well and cement wash up.

1. Hold pre-job safety meeting. Comply with all NMOCD, BLM, and COPC safety and environmental regulations. Test rig anchors prior to moving in rig. **Before RU, run WL remove downhole equipment. If an obstruction is found, set a locking-3-slip-stop in the tubing.**

2. MIRU workover rig. Check casing, tubing, and bradenhead pressures and record them in Wellview. **If there is pressure on the BH, contact the Wells Engineer.**

3. Remove existing piping on casing valve. RU blow lines from casing valves and being blowing down casing pressure. Kill well as necessary. Ensure well is dead or on a vacuum.

4. ND wellhead and NU BOPE. Pressure and function test BOP to 250 psi low and 1,000 psi over SICP high to a maximum of 2,000 psi held and charted for 10 minutes as per COP Well Control Manual. PU and remove tubing hanger

5. TOOH with tubing (per pertinent data sheet).

Tubing size: 2-3/8" 4.7# J-55 EUE Set Depth: 4,879 ftKB KB: 12 ft

6. PU 6-1/4" bit and watermelon mill and round trip as deep as possible above **TOP OF FISH @ 4,913'.**

7. PU 7" CR on tubing, and set @ 4,890'. Pressure test tubing to 1,000 psi. Sting out of CR. Load hole, and pressure test casing to 800 psi. *If casing does not test, then spot or tag subsequent plugs as appropriate.* POOH w/ tubing.

8. RU wireline and run CBL with 500 psi on casing from CIBP to surface to identify TOC. *Adjust plugs as necessary for new TOC.*

All cement volumes use 100% excess outside pipe and 50' excess inside pipe. The stabilizing wellbore fluid will be 8.3 ppg, sufficient to balance all exposed formation pressures. All cement will be ASTM Class B mixed at 15.6 ppg with a 1.18 cf/sk yield.

9. Plug 1 (Perforations, Int. Casing Shoe, Liner Top, Gallup Formation Top, 4,840-5,975', 180 Sacks Class B Cement)
RIH and sting in to CR and set @ 4,890'. Establish injection rate into perforations. Mix 180 sx Class B cement. Squeeze 160 sx below the cement retainer, leaving 20 sx above the retainer, inside the casing, to cover the perforations, intermediate casing shoe, liner top, and Gallup formation top. PUH.

~~4,800-4,400'~~ **4,660-4,560'**

10. Plug 2 (Mancos Formation Top, 4,660-4,400', 29 Sacks Class B Cement)
Mix 29 sx Class B cement and spot a balanced plug inside the casing to cover the Mancos top. PUH.

~~3,320-3,420'~~ **2,932-2,732'**

11. Plug 3 (Mesaverde Formation Top, 3,320-3,420', 29 Sacks Class B Cement)
Mix 29 sx Class B cement and spot a balanced plug inside the casing to cover the Mesaverde top. POOH.

~~2,430-2,450'~~ **2,430-2,450'**

12. Plug 4 (Chacra Formation Top, 2,430-2,450', 55 Sacks Class B Cement)
RIH and perforate 3 squeeze holes @ 2,430'. Establish injection rate into squeeze holes. RIH w/ 7" CR and set @ 2,400'. Mix 55 sx Class B cement. Squeeze 26 sx outside the casing, leaving 29 sx inside the casing to cover the Mesaverde top. PUH.

13. Plug 5 (Fruitland and Pictured Cliffs Formation Tops, 1,250-1,845', 122 Sacks Class B Cement)
Mix 122 sx Class B cement and spot a balanced plug inside the casing to cover the Fruitland and Pictured Cliffs tops. PUH.

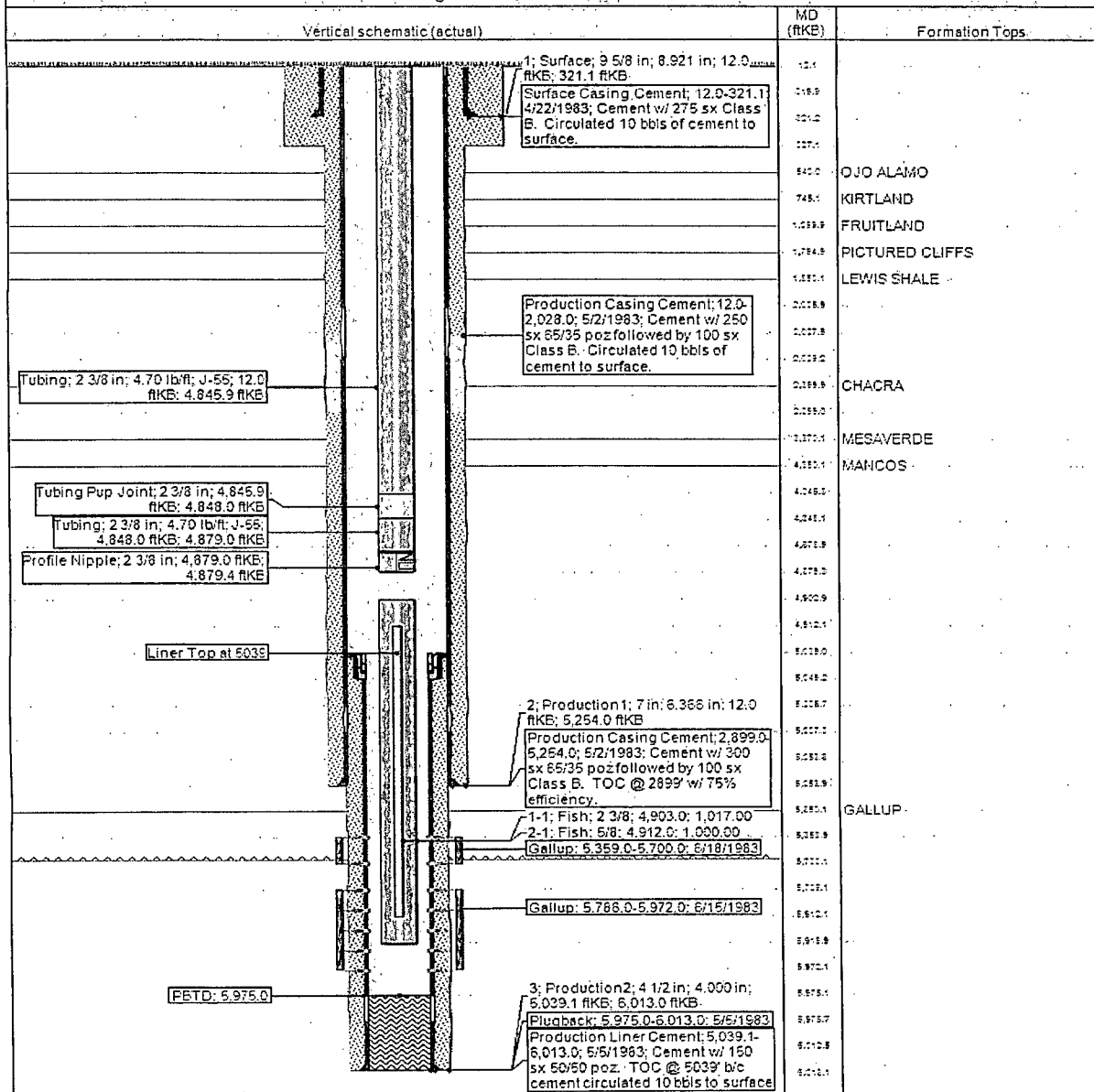
14. Plug 6 (Surface Casing, Ojo Alamom and Kirtland Formation Tops, 0-795', 159 Sacks Class B Cement)
Connect the pump line to the bradenhead valve and attempt to pressure test the BH annulus to 300 psi. Note the volume to load. If the BH annulus holds pressure, then establish circulation out casing valve with water. Mix 159 sx Class B cement and spot balanced plug inside casing from 795' to surface, circulating good cement out casing valve. TOOH and LD tubing. SI well and WOC. If the BH annulus does not test, then perforate at the appropriate depth and attempt to circulate cement to surface, filling the casing and the BH annulus to surface. Shut well in and WOC.

15. Nipple down BOP and cut off casing below the casing flange. Install P&A marker with cement to comply with regulations. Rig down, move off location, cut off anchors, and restore location.



District SOUTH	Field Name ARMENTA GALLUP #3188	API / UWI 3004525658	County SAN JUAN	State/Province NEW MEXICO	
Original Spud Date. 4/21/1983	Surface Legal Location 44S 35-023N-111W	East/West Distance (ft) 950.00	East/West Reference E	North/South Distance (ft) 445.00	North/South Reference N

Original Hole, 1/29/2014 3:05:19 PM



Schematic - Proposed
CONGRESS #14

Report Printed: 1/30/2007

UNITED STATES DEPARTMENT OF THE INTERIOR
BUREAU OF LAND MANAGEMENT
FARMINGTON DISTRICT OFFICE
6251 COLLEGE BLVD.
FARMINGTON, NEW MEXICO 87402

Attachment to notice of
Intention to Abandon:

Re: Permanent Abandonment
Well: 14 Congress

CONDITIONS OF APPROVAL

1. Plugging operations authorized are subject to the attached "General Requirements for Permanent Abandonment of Wells on Federal and Indian Lease."
2. Farmington Office is to be notified at least 24 hours before the plugging operations commence (505) 564-7750.
3. The following modifications to your plugging program are to be made:
 - a) Place the Mancos plug from 4660' – 4560'.
 - b) Place the Chacra plug from 2832' - 2732' inside and outside the 7" casing.

You are also required to place cement excesses per 4.2 and 4.4 of the attached General Requirements.

Office Hours: 7:45 a.m. to 4:30 p.m.