

District I  
1625 N. French Dr., Hobbs, NM 88240  
District II  
811 S. First St., Artesia, NM 88210  
District III  
1000 Rio Brazos Road, Aztec, NM 87410  
District IV  
1220 S. St. Francis Dr., Santa Fe, NM 87505

State of New Mexico  
Energy Minerals and Natural Resources  
Department  
Oil Conservation Division  
1220 South St. Francis Dr.  
Santa Fe, NM 87505

Form C-144  
Revised June 6, 2013

For temporary pits, below-grade tanks, and multi-well fluid management pits, submit to the appropriate NMOCD District Office.  
For permanent pits submit to the Santa Fe Environmental Bureau office and provide a copy to the appropriate NMOCD District Office.

Pit, Below-Grade Tank, or  
Proposed Alternative Method Permit or Closure Plan Application

- Type of action: ☐ Below grade tank registration  
☐ Permit of a pit or proposed alternative method  
☒ Closure of a pit, below-grade tank, or proposed alternative method  
☐ Modification to an existing permit/or registration  
☐ Closure plan only submitted for an existing permitted or non-permitted pit, below-grade tank, or proposed alternative method

**Instructions:** Please submit one application (Form C-144) per individual pit, below-grade tank or alternative request

Please be advised that approval of this request does not relieve the operator of liability should operations result in pollution of surface water, ground water or the environment. Nor does approval relieve the operator of its responsibility to comply with any other applicable governmental authority's rules, regulations or ordinances.

1.  
Operator: WPX Energy Production, LLC OGRID #: 120782  
Address: PO Box 640/721 S Main Aztec, NM 87410  
Facility or well name: Chaco 2206-02P #227H  
API Number: 30-043-21167 OCD Permit Number: 11402  
U/L or Qtr/Qtr P Section 2 Township 22N Range 6W County: Sandoval  
Center of Proposed Design: Latitude 36.16062N Longitude -107.43187W NAD: ☐ 1927 ☒ 1983  
Surface Owner: ☐ Federal ☒ State ☐ Private ☐ Tribal Trust or Indian Allotment

2.  
☒ **Pit:** Subsection F, G or J of 19.15.17.11 NMAC  
Temporary: ☒ Drilling ☒ Completion ☐ Workover  
☐ Permanent ☐ Emergency ☐ Cavitation ☐ P&A ☐ Multi-Well Fluid Management Low Chloride Drilling Fluid ☒ yes ☐ no  
☒ Lined ☐ Unlined Liner type: Thickness 20 mil ☒ LLDPE ☐ HDPE ☐ PVC ☐ Other \_\_\_\_\_  
☒ String-Reinforced  
Liner Seams: ☒ Welded ☒ Factory ☐ Other \_\_\_\_\_ Volume: 10,686 bbl Dimensions: L 50' x W 100' x D 12'

3.  
☐ **Below-grade tank:** Subsection I of 19.15.17.11 NMAC  
Volume: \_\_\_\_\_ bbl Type of fluid: \_\_\_\_\_  
Tank Construction material: \_\_\_\_\_  
☐ Secondary containment with leak detection ☐ Visible sidewalls, liner, 6-inch lift and automatic overflow shut-off  
☐ Visible sidewalls and liner ☐ Visible sidewalls only ☐ Other \_\_\_\_\_  
Liner type: Thickness \_\_\_\_\_ mil ☐ HDPE ☐ PVC ☐ Other \_\_\_\_\_

4.  
☐ **Alternative Method:**  
Submittal of an exception request is required. Exceptions must be submitted to the Santa Fe Environmental Bureau office for consideration of approval.

5.  
**Fencing:** Subsection D of 19.15.17.11 NMAC (Applies to permanent pits, temporary pits, and below-grade tanks)  
☐ Chain link, six feet in height, two strands of barbed wire at top (Required if located within 1000 feet of a permanent residence, school, hospital, institution or church)  
☐ Four foot height, four strands of barbed wire evenly spaced between one and four feet  
☒ Alternate. Please specify As per BLM specifications

6.

**Netting:** Subsection E of 19.15.17.11 NMAC (*Applies to permanent pits and permanent open top tanks*)

☐ Screen ☐ Netting ☐ Other \_\_\_\_\_

☐ Monthly inspections (If netting or screening is not physically feasible)

7.

**Signs:** Subsection C of 19.15.17.11 NMAC

☐ 12"x 24", 2" lettering, providing Operator's name, site location, and emergency telephone numbers

☒ Signed in compliance with 19.15.16.8 NMAC

8.

**Variances and Exceptions:**

Justifications and/or demonstrations of equivalency are required. Please refer to 19.15.17 NMAC for guidance.

***Please check a box if one or more of the following is requested, if not leave blank:***

☐ Variance(s): Requests must be submitted to the appropriate division district for consideration of approval.

☐ Exception(s): Requests must be submitted to the Santa Fe Environmental Bureau office for consideration of approval.

9.

**Siting Criteria (regarding permitting):** 19.15.17.10 NMAC

***Instructions: The applicant must demonstrate compliance for each siting criteria below in the application. Recommendations of acceptable source material are provided below. Siting criteria does not apply to drying pads or above-grade tanks.***

**General siting**

**Ground water is less than 25 feet below the bottom of a low chloride temporary pit or below-grade tank.**

- ☐ NM Office of the State Engineer - iWATERS database search; ☐ USGS; ☒ Data obtained from nearby wells

☐ Yes ☒ No  
☐ NA

**Ground water is less than 50 feet below the bottom of a Temporary pit, permanent pit, or Multi-Well Fluid Management pit.**

NM Office of the State Engineer - iWATERS database search; USGS; Data obtained from nearby wells

☐ Yes ☒ No  
☐ NA

Within incorporated municipal boundaries or within a defined municipal fresh water well field covered under a municipal ordinance adopted pursuant to NMSA 1978, Section 3-27-3, as amended. **(Does not apply to below grade tanks)**

- Written confirmation or verification from the municipality; Written approval obtained from the municipality

☐ Yes ☒ No

Within the area overlying a subsurface mine. **(Does not apply to below grade tanks)**

- Written confirmation or verification or map from the NM EMNRD-Mining and Mineral Division

☐ Yes ☒ No

Within an unstable area. **(Does not apply to below grade tanks)**

- Engineering measures incorporated into the design; NM Bureau of Geology & Mineral Resources; USGS; NM Geological Society; Topographic map

☐ Yes ☒ No

Within a 100-year floodplain. **(Does not apply to below grade tanks)**

- FEMA map

☐ Yes ☒ No

**Below Grade Tanks**

Within 100 feet of a continuously flowing watercourse, significant watercourse, lake bed, sinkhole, wetland or playa lake (measured from the ordinary high-water mark).

- Topographic map; Visual inspection (certification) of the proposed site

☐ Yes ☐ No

Within 200 horizontal feet of a spring or a fresh water well used for public or livestock consumption;

- NM Office of the State Engineer - iWATERS database search; Visual inspection (certification) of the proposed site

☐ Yes ☐ No

**Temporary Pit using Low Chloride Drilling Fluid** (maximum chloride content 15,000 mg/liter)

Within 100 feet of a continuously flowing watercourse, or any other significant watercourse or within 200 feet of any lakebed, sinkhole, or playa lake (measured from the ordinary high-water mark). (Applies to low chloride temporary pits.)

- Topographic map; Visual inspection (certification) of the proposed site

☐ Yes ☒ No

Within 300 feet from a occupied permanent residence, school, hospital, institution, or church in existence at the time of initial application.

- Visual inspection (certification) of the proposed site; Aerial photo; Satellite image

☐ Yes ☒ No

Within 200 horizontal feet of a spring or a private, domestic fresh water well used by less than five households for domestic or stock watering purposes, or 300feet of any other fresh water well or spring, in existence at the time of the initial application.

NM Office of the State Engineer - iWATERS database search; Visual inspection (certification) of the proposed site

☐ Yes ☒ No

Within 100 feet of a wetland.

- US Fish and Wildlife Wetland Identification map; Topographic map; Visual inspection (certification) of the proposed site

☐ Yes ☒ No

### **Temporary Pit Non-low chloride drilling fluid**

Within 300 feet of a continuously flowing watercourse, or any other significant watercourse, or within 200 feet of any lakebed, sinkhole, or playa lake (measured from the ordinary high-water mark).

- Topographic map; Visual inspection (certification) of the proposed site

☐ Yes ☐ No

Within 300 feet from a permanent residence, school, hospital, institution, or church in existence at the time of initial application.

- Visual inspection (certification) of the proposed site; Aerial photo; Satellite image

☐ Yes ☐ No

Within 500 horizontal feet of a spring or a private, domestic fresh water well used by less than five households for domestic or stock watering purposes, or 1000 feet of any other fresh water well or spring, in the existence at the time of the initial application;

- NM Office of the State Engineer - iWATERS database search; Visual inspection (certification) of the proposed site

☐ Yes ☐ No

Within 300 feet of a wetland.

- US Fish and Wildlife Wetland Identification map; Topographic map; Visual inspection (certification) of the proposed site

☐ Yes ☐ No

### **Permanent Pit or Multi-Well Fluid Management Pit**

Within 300 feet of a continuously flowing watercourse, or 200 feet of any other significant watercourse, or lakebed, sinkhole, or playa lake (measured from the ordinary high-water mark).

- Topographic map; Visual inspection (certification) of the proposed site

☐ Yes ☐ No

Within 1000 feet from a permanent residence, school, hospital, institution, or church in existence at the time of initial application.

- Visual inspection (certification) of the proposed site; Aerial photo; Satellite image

☐ Yes ☐ No

Within 500 horizontal feet of a spring or a fresh water well used for domestic or stock watering purposes, in existence at the time of initial application.

- NM Office of the State Engineer - iWATERS database search; Visual inspection (certification) of the proposed site

☐ Yes ☐ No

Within 500 feet of a wetland.

- US Fish and Wildlife Wetland Identification map; Topographic map; Visual inspection (certification) of the proposed site

☐ Yes ☐ No

10.

#### **Temporary Pits, Emergency Pits, and Below-grade Tanks Permit Application Attachment Checklist:** Subsection B of 19.15.17.9 NMAC

**Instructions:** Each of the following items must be attached to the application. Please indicate, by a check mark in the box, that the documents are attached.

- ☐ Hydrogeologic Report (Below-grade Tanks) - based upon the requirements of Paragraph (4) of Subsection B of 19.15.17.9 NMAC
- ☒ Hydrogeologic Data (Temporary and Emergency Pits) - based upon the requirements of Paragraph (2) of Subsection B of 19.15.17.9 NMAC
- ☒ Siting Criteria Compliance Demonstrations - based upon the appropriate requirements of 19.15.17.10 NMAC
- ☒ Design Plan - based upon the appropriate requirements of 19.15.17.11 NMAC
- ☒ Operating and Maintenance Plan - based upon the appropriate requirements of 19.15.17.12 NMAC
- ☒ Closure Plan (Please complete Boxes 14 through 18, if applicable) - based upon the appropriate requirements of Subsection C of 19.15.17.9 NMAC and 19.15.17.13 NMAC

☐ Previously Approved Design (attach copy of design) API Number: 30-043-21167 or Permit Number: 11402

11.

#### **Multi-Well Fluid Management Pit Checklist:** Subsection B of 19.15.17.9 NMAC

**Instructions:** Each of the following items must be attached to the application. Please indicate, by a check mark in the box, that the documents are attached.

- ☐ Design Plan - based upon the appropriate requirements of 19.15.17.11 NMAC
- ☐ Operating and Maintenance Plan - based upon the appropriate requirements of 19.15.17.12 NMAC
- ☐ A List of wells with approved application for permit to drill associated with the pit.
- ☐ Closure Plan (Please complete Boxes 14 through 18, if applicable) - based upon the appropriate requirements of Subsection C of 19.15.17.9 NMAC and 19.15.17.13 NMAC
- ☐ Hydrogeologic Data - based upon the requirements of Paragraph (4) of Subsection B of 19.15.17.9 NMAC
- ☐ Siting Criteria Compliance Demonstrations - based upon the appropriate requirements of 19.15.17.10 NMAC

☐ Previously Approved Design (attach copy of design) API Number: \_\_\_\_\_ or Permit Number: \_\_\_\_\_

12. **Permanent Pits Permit Application Checklist:** Subsection B of 19.15.17.9 NMAC

**Instructions:** Each of the following items must be attached to the application. Please indicate, by a check mark in the box, that the documents are attached.

- ☐ Hydrogeologic Report - based upon the requirements of Paragraph (1) of Subsection B of 19.15.17.9 NMAC
- ☐ Siting Criteria Compliance Demonstrations - based upon the appropriate requirements of 19.15.17.10 NMAC
- ☐ Climatological Factors Assessment
- ☐ Certified Engineering Design Plans - based upon the appropriate requirements of 19.15.17.11 NMAC
- ☐ Dike Protection and Structural Integrity Design - based upon the appropriate requirements of 19.15.17.11 NMAC
- ☐ Leak Detection Design - based upon the appropriate requirements of 19.15.17.11 NMAC
- ☐ Liner Specifications and Compatibility Assessment - based upon the appropriate requirements of 19.15.17.11 NMAC
- ☐ Quality Control/Quality Assurance Construction and Installation Plan
- ☐ Operating and Maintenance Plan - based upon the appropriate requirements of 19.15.17.12 NMAC
- ☐ Freeboard and Overtopping Prevention Plan - based upon the appropriate requirements of 19.15.17.11 NMAC
- ☐ Nuisance or Hazardous Odors, including H<sub>2</sub>S, Prevention Plan
- ☐ Emergency Response Plan
- ☐ Oil Field Waste Stream Characterization
- ☐ Monitoring and Inspection Plan
- ☐ Erosion Control Plan
- ☐ Closure Plan - based upon the appropriate requirements of Subsection C of 19.15.17.9 NMAC and 19.15.17.13 NMAC

13. **Proposed Closure:** 19.15.17.13 NMAC

**Instructions:** Please complete the applicable boxes, Boxes 14 through 18, in regards to the proposed closure plan.

Type: ☒ Drilling ☒ Completion ☐ Workover ☐ Emergency ☐ Cavitation ☐ P&A ☐ Permanent Pit ☐ Below-grade Tank ☐ Multi-well Fluid Management Pit

☐ Alternative

Proposed Closure Method: ☐ Waste Excavation and Removal  
☐ Waste Removal (Closed-loop systems only)  
☒ On-site Closure Method (Only for temporary pits and closed-loop systems)  
☒ In-place Burial ☐ On-site Trench Burial  
☐ Alternative Closure Method

14. **Waste Excavation and Removal Closure Plan Checklist:** (19.15.17.13 NMAC) **Instructions:** Each of the following items must be attached to the closure plan. Please indicate, by a check mark in the box, that the documents are attached.

- ☐ Protocols and Procedures - based upon the appropriate requirements of 19.15.17.13 NMAC
- ☐ Confirmation Sampling Plan (if applicable) - based upon the appropriate requirements of Subsection C of 19.15.17.13 NMAC
- ☐ Disposal Facility Name and Permit Number (for liquids, drilling fluids and drill cuttings)
- ☐ Soil Backfill and Cover Design Specifications - based upon the appropriate requirements of Subsection H of 19.15.17.13 NMAC
- ☐ Re-vegetation Plan - based upon the appropriate requirements of Subsection H of 19.15.17.13 NMAC
- ☐ Site Reclamation Plan - based upon the appropriate requirements of Subsection H of 19.15.17.13 NMAC

15. **Siting Criteria (regarding on-site closure methods only):** 19.15.17.10 NMAC

**Instructions:** Each siting criteria requires a demonstration of compliance in the closure plan. Recommendations of acceptable source material are provided below. Requests regarding changes to certain siting criteria require justifications and/or demonstrations of equivalency. Please refer to 19.15.17.10 NMAC for guidance.

Ground water is less than 50 feet below the bottom of the buried waste. - NM Office of the State Engineer - iWATERS database search; USGS; Data obtained from nearby wells	<input type="checkbox"/> Yes <input checked="" type="checkbox"/> No <input type="checkbox"/> NA
Ground water is between 50 and 100 feet below the bottom of the buried waste - NM Office of the State Engineer - iWATERS database search; USGS; Data obtained from nearby wells	<input checked="" type="checkbox"/> Yes <input type="checkbox"/> No <input type="checkbox"/> NA
Ground water is more than 100 feet below the bottom of the buried waste. - NM Office of the State Engineer - iWATERS database search; USGS; Data obtained from nearby wells	<input type="checkbox"/> Yes <input checked="" type="checkbox"/> No <input type="checkbox"/> NA
Within 300 feet of a continuously flowing watercourse, or 200 feet of any other significant watercourse or lakebed, sinkhole, or playa lake (measured from the ordinary high-water mark). - Topographic map; Visual inspection (certification) of the proposed site	<input type="checkbox"/> Yes <input checked="" type="checkbox"/> No
Within 300 feet from a permanent residence, school, hospital, institution, or church in existence at the time of initial application. - Visual inspection (certification) of the proposed site; Aerial photo; Satellite image	<input type="checkbox"/> Yes <input checked="" type="checkbox"/> No
Within 500 horizontal feet of a private, domestic fresh water well or spring that less than five households use for domestic or stock watering purposes, or within 1000 horizontal feet of any other fresh water well or spring, in existence at the time of initial application. - NM Office of the State Engineer - iWATERS database; Visual inspection (certification) of the proposed site	<input type="checkbox"/> Yes <input checked="" type="checkbox"/> No
Within incorporated municipal boundaries or within a defined municipal fresh water well field covered under a municipal ordinance adopted pursuant to NMSA 1978, Section 3-27-3, as amended. - Written confirmation or verification from the municipality; Written approval obtained from the municipality	<input type="checkbox"/> Yes <input checked="" type="checkbox"/> No

Within 500 feet of a wetland. - US Fish and Wildlife Wetland Identification map; Topographic map; Visual inspection (certification) of the proposed site	<input type="checkbox"/> Yes <input checked="" type="checkbox"/> No
Within the area overlying a subsurface mine. - Written confirmation or verification or map from the NM EMNRD-Mining and Mineral Division	<input type="checkbox"/> Yes <input checked="" type="checkbox"/> No
Within an unstable area. - Engineering measures incorporated into the design; NM Bureau of Geology & Mineral Resources; USGS; NM Geological Society; Topographic map	<input type="checkbox"/> Yes <input checked="" type="checkbox"/> No
Within a 100-year floodplain. - FEMA map	<input type="checkbox"/> Yes <input checked="" type="checkbox"/> No

16. **On-Site Closure Plan Checklist:** (19.15.17.13 NMAC) *Instructions: Each of the following items must be attached to the closure plan. Please indicate, by a check mark in the box, that the documents are attached.*

- ☒ Siting Criteria Compliance Demonstrations - based upon the appropriate requirements of 19.15.17.10 NMAC
- ☒ Proof of Surface Owner Notice - based upon the appropriate requirements of Subsection E of 19.15.17.13 NMAC
- ☐ Construction/Design Plan of Burial Trench (if applicable) based upon the appropriate requirements of Subsection K of 19.15.17.11 NMAC
- ☒ Construction/Design Plan of Temporary Pit (for in-place burial of a drying pad) - based upon the appropriate requirements of 19.15.17.11 NMAC
- ☒ Protocols and Procedures - based upon the appropriate requirements of 19.15.17.13 NMAC
- ☒ Confirmation Sampling Plan (if applicable) - based upon the appropriate requirements of 19.15.17.13 NMAC
- ☒ Waste Material Sampling Plan - based upon the appropriate requirements of 19.15.17.13 NMAC
- ☒ Disposal Facility Name and Permit Number (for liquids, drilling fluids and drill cuttings or in case on-site closure standards cannot be achieved)
- ☒ Soil Cover Design - based upon the appropriate requirements of Subsection H of 19.15.17.13 NMAC
- ☒ Re-vegetation Plan - based upon the appropriate requirements of Subsection H of 19.15.17.13 NMAC
- ☒ Site Reclamation Plan - based upon the appropriate requirements of Subsection H of 19.15.17.13 NMAC

17. **Operator Application Certification:**

I hereby certify that the information submitted with this application is true, accurate and complete to the best of my knowledge and belief.

Name (Print): \_\_\_\_\_ Title: \_\_\_\_\_

Signature: \_\_\_\_\_ Date: \_\_\_\_\_

e-mail address: \_\_\_\_\_ Telephone: \_\_\_\_\_

18. **OCD Approval:** ☐ Permit Application (including closure plan) ☒ Closure Plan (only) ☐ OCD Conditions (see attachment)

OCD Representative Signature: Jonathan D. Kelly Approval Date: 8/21/2014

Title: Compliance Officer OCD Permit Number: \_\_\_\_\_

19. **Closure Report (required within 60 days of closure completion):** 19.15.17.13 NMAC

*Instructions: Operators are required to obtain an approved closure plan prior to implementing any closure activities and submitting the closure report. The closure report is required to be submitted to the division within 60 days of the completion of the closure activities. Please do not complete this section of the form until an approved closure plan has been obtained and the closure activities have been completed.*

☐ Closure Completion Date: 3/17/2014

20. **Closure Method:**

- ☐ Waste Excavation and Removal ☒ On-Site Closure Method ☐ Alternative Closure Method ☐ Waste Removal (Closed-loop systems only)
- ☐ If different from approved plan, please explain.

21. **Closure Report Attachment Checklist:** *Instructions: Each of the following items must be attached to the closure report. Please indicate, by a check mark in the box, that the documents are attached.*

- ☒ Proof of Closure Notice (surface owner and division)
- ☐ Proof of Deed Notice (required for on-site closure for private land only)
- ☒ Plot Plan (for on-site closures and temporary pits)
- ☒ Confirmation Sampling Analytical Results (if applicable)
- ☒ Waste Material Sampling Analytical Results (required for on-site closure)
- ☒ Disposal Facility Name and Permit Number
- ☒ Soil Backfilling and Cover Installation
- ☒ Re-vegetation Application Rates and Seeding Technique
- ☒ Site Reclamation (Photo Documentation)

On-site Closure Location: Latitude 36.16062N Longitude -107.43187W NAD: ☐ 1927 ☒ 1983

**Operator Closure Certification:**

I hereby certify that the information and attachments submitted with this closure report is true, accurate and complete to the best of my knowledge and belief. I also certify that the closure complies with all applicable closure requirements and conditions specified in the approved closure plan.

Name (Print): Mark Heil Title: Regulatory Specialist

Signature:  Date: 7/30/2014

e-mail address: mark.heil@wpenergy.com Telephone: 505-333-1806

**WPX Energy Production, LLC**  
**San Juan Basin: New Mexico Assets**  
Temporary Pit In-place Closure Report  
Drilling/Completion and Workover  
(Groundwater 50-100 feet bgs)

**Well:** Chaco 2206-02P #227H  
**API No:** 30-043-21167  
**Location:** P-S02-T22N-R06W, NMPM

In accordance with Rule 19.15.17.13 NMAC, the following plan describes the general in-place closure requirements of temporary pits on WPX Energy Production, LLC (WPX) locations in the San Juan Basin of New Mexico. This is WPX's standard procedure for all temporary pits to be utilized for the drilling, completion and/or workovers of oil and gas wells operated by WPX. For those temporary pits which do not conform to this standard closure plan, a separate well/pit specific closure plan will be developed and utilized.

All closure activities will include proper documentation and will be submitted to OCD within 60 days of the pit closure on a Closure Report using Division Form C-144. The Report will include the following:

- Details on Capping and Covering, where applicable
- Plot Plan (Pit Diagram)
- Inspection reports
- Sampling Results
- Division Form C-105: *WELL COMPLETION OR RECOMPLETION REPORT AND LOG*
- Copy of Deed Notice filed with the County Clerk (format to meet County requirements)  
A deed notice is not required on state, federal or tribal land according to NMOCD FAQ dated October 30, 2008 and posted on the NMOCD website.

General Plan Requirements:

1. All free standing liquids will be removed from the pit at the start of the closure process. Liquids will be removed in a manner that the appropriate District Office approves including: recycled, reused, reclaimed, evaporated, and/or disposed of in a Division-approved facility. Once all free liquids are removed, the sludge will be stabilized by one of the following methods depending on equipment availability: blending with clean stockpiled soils or dewatering using a Bowl Decanter Centrifuge then blending with clean stockpiles soils.

Free liquids were not present at the reserve pit following the completion rig-off. Therefore, no liquids were hauled.

2. The preferred method of closure for all temporary pits will be on-site closure by in-place burial, provided all the criteria in 19.15.17.13.B are met.

On-site burial plan for this location was approved by the Aztec District Office on (7/21/2014) as a modification to the original pit permit burial procedures.

3. The surface owner shall be notified of WPX's proposed closure plan using a means that provides proof of notice (i.e. certified mail/return receipt requested)

WPX notified the SMA of its intent to use a temporary pit and onsite burial in the Surface Use Plan in the well APD. The SMA was notified by email. No return receipt required per BLM:FFO/NMOCD MOU dated 5/4/2009.

4. Within six months of the "rig-off" status occurring WPX will ensure that the temporary pit is covered, recontoured and reseeding in progress.

Drill rig-off (11/16/2013). Completion Rig-off (11/18/2013) Pit covered (2/15/2014). Pit area along with unused portions of well pad to be interim reclaimed in accordance with Surface Management Agency requirements in APD-COAs and per BLM:FFO/NMOCD MOU dated 5/4/2009.

5. Notice of Closure will be given to the Aztec District office between 72 hours and one week of the scheduled closure via email or phone. The notification of closure will include the following:

- a. Operators Name (WPX)
- b. Well Name and API Number
- c. Location (USTR)

The Aztec District Office of NMOCD was notified by email using a format acceptable to the District. Copies of the notification from Abode Contractors on (2/11/2014) is attached.

6. The pit liner shall be removed above "mud level" after stabilization. Removal of the liner will consist of manually or mechanically cutting the liner at the mud level and removing all remaining liner. Care will be taken to remove "all" of the liner (i.e. anchored material). All excessive liner will be disposed of at a licensed disposal facility (probably San Juan Regional Landfill operated by Waste Management under NMED Permit SWM-052426).

The liner to the temporary pit was removed above the "mud level" once stabilized. Removal of the liner consisted of manually cutting the liner and removing all remaining liner material above the "mud level" including the anchor

material. All excessive liner was disposed of at the San Juan Regional Landfill operated by Waste Management under NMED Permit SWM-052426.

7. Solidification of the remaining pit contents shall be achieved by mixing non-waste containing, earthen material. The solidification process will be accomplished use a combination of natural drying and mechanical mixing. Pit contents will be mixed with non-waste, earthen material to a consistency that is deemed safe and stable. The mixing ratio shall not exceed 3 parts non-waste to 1 part pit contents.

There were no liquids to be removed at the pit. The pit contents were mixed with non-waste containing, earthen material in order to achieve appropriate solidification and a consistency that was deemed safe and stable. The solidification process was accomplished using a combination of natural drying, and mechanically mixing using a dozer and trackhoe. The mixing ration was approximately 2.5-3 parts native soil to 1 part pit contents. Solidification was completed (2/17/2014).

8. A five-point composite sample will be taken of the pit using sampling tools and all samples tested per 19.15.17.13(B)(1)(b) NMAC. In the event that the criteria are not met (See Table 1), all contents will be handled per 19.15.17.13(B)(1)(a) (i.e. dig and haul to a Division-approved facility). Approval to haul will be requested of the Aztec District office prior to initiation.

A five-point composite sampling was taken of the pit area using sampling tools and the sample was tested per 19.15.17.13(B)(1)(b) NMAC. Results are shown in Table 1 and lab reports are attached.

Table 1: Closure Criteria for Temporary Pits in Non-sensitive Areas with Groundwater 50-100 bgs.

Components	Testing Methods	Limits (mg/Kg)	Pit (mg/Kg)
Benzene	EPA SW-846 Method 8021B or 8260B	0.2	ND
BTEX	EPA SW-846 Method 8021B or 8260B	50	ND
TPH	EPA SW-846 Method 418.1	2,500	563
GRO/DRO	EPA SW-846 Method 8015M (GRO/DRO)	500	10.2/59.1
Chloride	EPA SW-846 Method 300.1	500	158

9. Upon completion of solidification and testing, the pit area will be backfilled with non-waste earthen material compacted to native conditions to enable effective revegetation for successful evapotranspiration. A minimum of four feet of cover including replacement of one foot of suitable material to establish vegetation, or the background thickness of topsoil, whichever is greater.

Upon completion of solidification and testing, the pit area was backfilled with non-waste earthen material compacted to native conditions. A minimum of four feet of cover to the extent practical was achieved and the cover included just over a foot of topsoil suitable to establish vegetation.

10. Following cover, the well pad will be prepared for an additional drilling rig to drill Chaco 2206-02P #227H. After all activity on the pad is complete, the site will be recontoured to meet the Surface Management Agency or surface owner requirements. Re-contouring will attempt to match fit, shape, line form, and texture of the surrounding geography. Re-shaping will include drainage control, prevent ponding, and minimize erosion. Natural drainages will be unimpeded and stormwater Best Management Practices (BMPs) will be used to aid in soil stabilization and protection surface water quality.

Following cover, WPX reestablished drainage and contours to approximately match previous topography meeting the Conditions of Approval in the APD and the direction offered by a BLM/USFS inspector. Cover was completed on (2/15/2014) and re-contouring was completed on (2/15/2014).

11. Notification will be sent to the Aztec District office when the reclaimed area is seeded.

WPX will comply with Surface Management Agency reseeding requirements in the COAs of the APD for the referenced well, per BLM:FFO/NMOCD MOU dated 5/4/09.

12. WPX shall seed the disturbed areas the first growing season after the pit is covered. Seeding will be accomplished via drilling on the contour whenever practical, or by other Division-approved methods. Vegetative cover will equal 70% of the native perennial vegetative cover (un-impacted) consisting of at least three native plant species, including at least one grass, but not including noxious weeds, and maintained that cover through two successive growing seasons. Repeat seeding or planting will be continued until successful vegetative growth occurs. *Note: WPX assumes the seeding stipulations including mix and seeding methods specified by the Surface Management Agency (BLM, BOR, USFS, Tribal, etc.) or Land owner as part of a surface use agreement or APD are Division-approved methods unless notified by the Division of their unacceptability.*

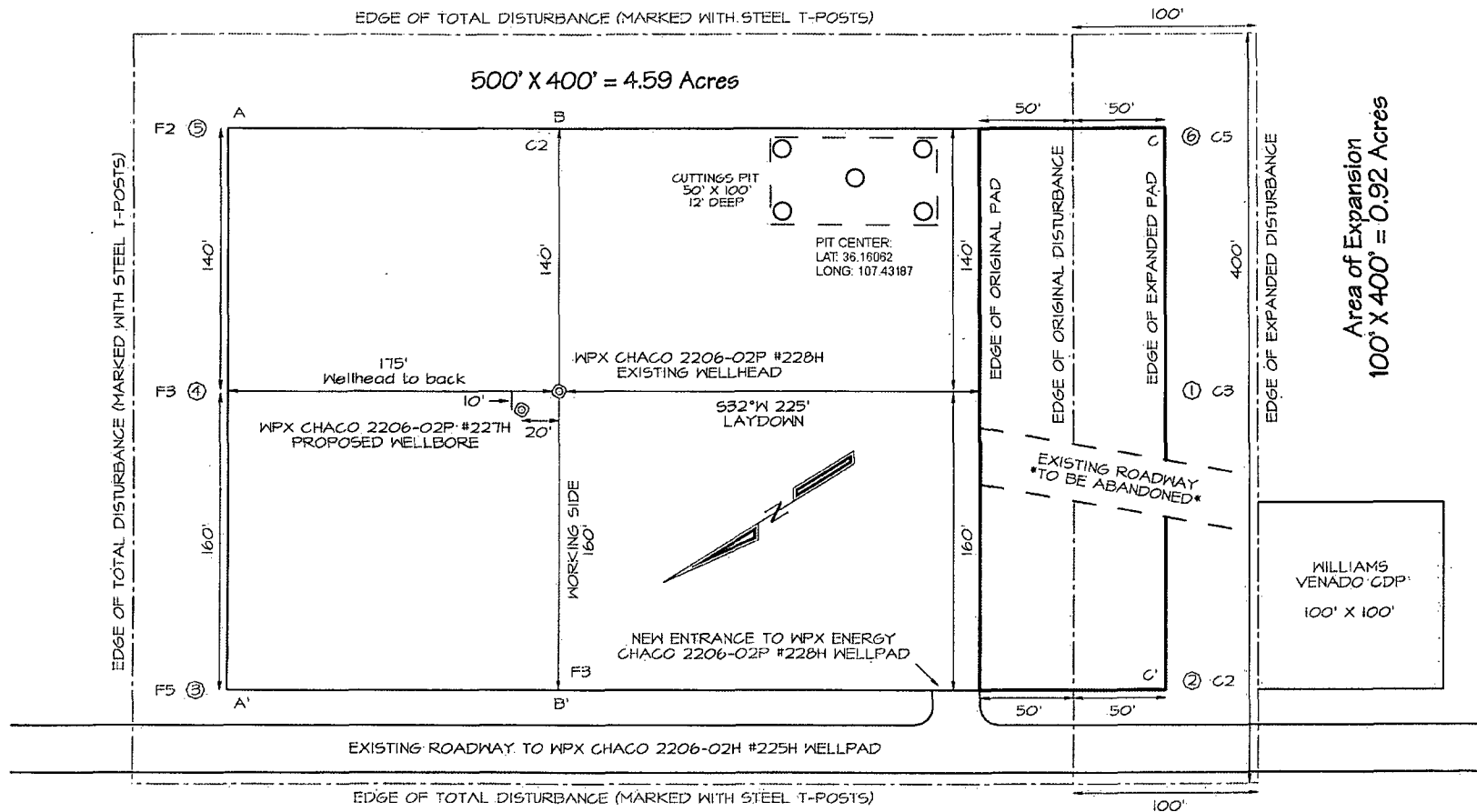
WPX will comply with Surface Management Agency reseeding requirements in the COAs of the APD for the referenced well, per BLM:FFO/NMOCD MOU dated 5/4/09.

13. The temporary pit will be located with a steel marker, no less than four inches in diameter, cemented in a hole three feet deep in the center of the on-site burial upon the abandonment of all wells on the pad. The marker will be flush with the ground to allow access of the active well pad and for safety concerns. The marker will include a threaded collar to be used for future abandonment. The top of the marker will contain a welded steel 12" square plate that indicates the onsite burial of the temporary pit. The plate will be easily removable and a four-foot tall riser will be threaded into the top of the collar marker and welded around the base with the operations information at the time of all wells on the pad abandoned. The information will include Operator Name, Lease Name, Well Name, and number, USTR, and an indicator that the marker is an onsite pit burial location.

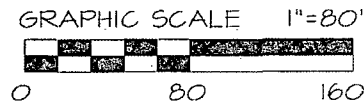


The temporary pit was located with a steel marker meeting the above listed specifications. The marker has the following information welded for future reference WPX ENERGY Chaco 2206-02P #227H S02P-T22N-R06W, "In-Place Burial" (photo attached). Steel marker set (3/17/2014).

**WPX ENERGY PRODUCTION, LLC CHACO 2206-02P #227H EXPANSION**  
**577' FSL & 805' FEL, SECTION 2, T22N, R6W, NMPM**  
**SANDOVAL COUNTY, NEW MEXICO ELEVATION: 6944'**  
**LAT: 36.16114°N LONG: 107.43182°W DATUM: NAD1983**



~ SURFACE OWNER ~  
 State of New Mexico Land



Steel T-Posts have been set to define the Edge of Disturbance limits which are 50' offset from the edge of the staked wellpad.

O = SAMPLE LOCATION



## Analytical Report

### Report Summary

Client: WPX Energy, Inc.  
Chain Of Custody Number: 16616  
Samples Received: 2/17/2014 11:30:00AM  
Job Number: 04108-0006  
Work Order: P402040  
Project Name/Location: Chaco 2206-2P #227H

Entire Report Reviewed By:

A handwritten signature in black ink, appearing to read "Tim Cain", is written over a horizontal line.

Tim Cain, Laboratory Manager

Date: 2/24/14

The results in this report apply to the samples submitted to Envirotech's Analytical Laboratory and were analyzed in accordance with the chain of custody document supplied by you, the client, and as such are for your exclusive use only. The results in this report are based on the sample as received unless otherwise noted. Partial or incomplete reproduction of this report is prohibited, unless approved by Envirotech, Inc. If you have any questions regarding this analytical report, please don't hesitate to contact Envirotech's Laboratory Staff.

5796 US Highway 64, Farmington, NM 87401

Three Springs - 65 Mercado Street, Suite 115, Durango, CO 81301

Ph (505) 632-0615 Fx (505) 632-1865

Ph (970) 259-0615 Fr (800) 362-1879





WPX Energy, Inc.  
PO Box 21218  
Tulsa OK, 74121-1338

Project Name: Chaco 2206-2P #227H  
Project Number: 04108-0006  
Project Manager: Buddy Shaw

Reported:  
24-Feb-14 10:31

### Analytical Report for Samples

Client Sample ID	Lab Sample ID	Matrix	Sampled	Received	Container
Cuttings Pit	P402040-01A	Soil	02/13/14	02/17/14	Glass Jar, 4 oz.

Partial or incomplete reproduction of this report is prohibited, unless approved by Envirotech, Inc.

5796 US Highway 64, Farmington, NM 87401

Ph (505) 632-0615 Fx (505) 632-1865

Three Springs - 65 Mercado Street, Suite 115, Durango, CO 81301

Ph (970) 259-0615 Fx (800) 362-1879



Page 2 of 10



WPX Energy, Inc.  
PO Box 21218  
Tulsa OK, 74121-1358

Project Name: Chaco 2206-2P #227H  
Project Number: 04108-0006  
Project Manager: Buddy Shaw

Reported:  
24-Feb-14 10:31

**Cuttings Pit**  
**P402040-01 (Solid)**

Analyte	Result	Reporting		Units	Dilution	Batch	Prepared	Analyzed	Method	Notes
		Limit								
Volatile Organics by EPA 8021										
Benzene	ND	0.05	mg/kg	1	1408007	02/18/14	02/20/14	EPA 8021B		
Toluene	ND	0.05	mg/kg	1	1408007	02/18/14	02/20/14	EPA 8021B		
Ethylbenzene	ND	0.05	mg/kg	1	1408007	02/18/14	02/20/14	EPA 8021B		
p,m-Xylene	0.41	0.05	mg/kg	1	1408007	02/18/14	02/20/14	EPA 8021B		
o-Xylene	ND	0.05	mg/kg	1	1408007	02/18/14	02/20/14	EPA 8021B		
Total Xylenes	0.41	0.05	mg/kg	1	1408007	02/18/14	02/20/14	EPA 8021B		
Total BTEX	0.41	0.05	mg/kg	1	1408007	02/18/14	02/20/14	EPA 8021B		
Surrogate: Bromochlorobenzene		116 %		80-120	1408007	02/18/14	02/20/14	EPA 8021B		
Surrogate: 1,3-Dichlorobenzene		101 %		80-120	1408007	02/18/14	02/20/14	EPA 8021B		
Nonhalogenated Organics by 8015										
Gasoline Range Organics (C6-C10)	23.1	4.99	mg/kg	1	1408007	02/18/14	02/20/14	EPA 8015D		
Diesel Range Organics (C10-C28)	216	30.0	mg/kg	1	1408006	02/18/14	02/19/14	EPA 8015D		
Total Petroleum Hydrocarbons by 418.1										
Total Petroleum Hydrocarbons	323	19.9	mg/kg	1	1408005	02/18/14	02/18/14	EPA 418.1		
Cation/Anion Analysis										
Chloride	78.6	9.90	mg/kg	1	1408008	02/19/14	02/19/14	EPA 300.0		

Partial or incomplete reproduction of this report is prohibited, unless approved by Envirotech, Inc.

5796 US Highway 64, Farmington, NM 87401  
Three Springs • 65 Mercado Street, Suite 115, Durango, CO 81301

Ph (505) 632-0615 Fx (505) 632-1865  
Ph (970) 259-0615 Fr (800) 362-1879





WFX Energy, Inc.  
PO Box 21218  
Tulsa OK, 74121-1358

Project Name: Chaco 2206-2P #227H  
Project Number: 04108-0006  
Project Manager: Buddy Shaw

Reported:  
24-Feb-14 10:31

**Volatile Organics by EPA 8021 - Quality Control**  
**Envirotech Analytical Laboratory**

Analyte	Result	Reporting Limit	Units	Spike Level	Source Result	%REC	%REC Limits	RPD	RPD Limit	Notes
<b>Batch 1408007 - Purge and Trap EPA 5030A</b>										
<b>Blank (1408007-BLK1)</b>				Prepared: 18-Feb-14 Analyzed: 20-Feb-14						
Benzene	ND	0.05	mg/kg							
Toluene	ND	0.05	"							
Ethylbenzene	ND	0.05	"							
p,m-Xylene	ND	0.05	"							
o-Xylene	ND	0.05	"							
Total Xylenes	ND	0.05	"							
Total BTEX	ND	0.05	"							
Surrogate: 1,3-Dichlorobenzene	44.2		ug/L	50.0		88.3	80-120			
Surrogate: Bromochlorobenzene	46.3		"	50.0		92.5	80-120			
<b>Duplicate (1408007-DUP1)</b>				Source: P402040-01	Prepared: 18-Feb-14 Analyzed: 20-Feb-14					
Benzene	ND	0.05	mg/kg		ND				30	
Toluene	ND	0.05	"		ND				30	
Ethylbenzene	ND	0.05	"		ND				30	
p,m-Xylene	0.33	0.05	"		0.41			21.6	30	
o-Xylene	ND	0.05	"		ND				30	
Surrogate: 1,3-Dichlorobenzene	50.5		ug/L	50.0		101	80-120			
Surrogate: Bromochlorobenzene	50.1		"	50.0		118	80-120			
<b>Matrix Spike (1408007-MS1)</b>				Source: P402040-01	Prepared: 18-Feb-14 Analyzed: 20-Feb-14					
Benzene	43.2		ug/L	50.0	ND	86.5	39-150			
Toluene	47.0		"	50.0	ND	94.1	46-148			
Ethylbenzene	47.2		"	50.0	ND	94.5	32-160			
p,m-Xylene	97.7		"	100	8.30	89.4	46-148			
o-Xylene	46.6		"	50.0	ND	93.1	46-148			
Surrogate: 1,3-Dichlorobenzene	50.4		"	50.0		101	80-120			
Surrogate: Bromochlorobenzene	56.1		"	50.0		112	80-120			

Partial or incomplete reproduction of this report is prohibited, unless approved by Envirotech, Inc.

5796 US Highway 64, Farmington, NM 87401

Ph (505) 632-0615 Fx (505) 632-1865

Three Springs - 65 Mercado Street, Suite 115, Durango, CO 81301

Ph (970) 259-0615 Fr (800) 362-1879





WPX Energy, Inc.  
PO Box 21218  
Tulsa OK, 74121-1358

Project Name: Chaco 2206-2P #227H  
Project Number: 04108-0006  
Project Manager: Buddy Shaw

Reported:  
24-Feb-14 10:31

Nonhalogenated Organics by 8015 - Quality Control

Envirotech Analytical Laboratory

Analyte	Result	Reporting Limit	Units	Spike Level	Source Result	%REC Limits	RPD Limit	Notes
<b>Batch 1408006 - DRO Extraction EPA 3550C</b>								
<b>Blank (1408006-BLK1)</b>			Prepared: 18-Feb-14 Analyzed: 19-Feb-14					
Diesel Range Organics (C10-C28)	ND	29.9	mg/kg					
<b>Duplicate (1408006-DUP1)</b>			Source: P402040-01 Prepared: 18-Feb-14 Analyzed: 19-Feb-14					
Diesel Range Organics (C10-C28)	267	29.9	mg/kg	216		21.2	30	
<b>Matrix Spike (1408006-MS1)</b>			Source: P402040-01 Prepared: 18-Feb-14 Analyzed: 19-Feb-14					
Diesel Range Organics (C10-C28)	128	29.9	mg/kg	49.9	216	NR	75-125	SPK1

Partial or incomplete reproduction of this report is prohibited, unless approved by Envirotech, Inc.

5796 US Highway 64, Farmington, NM 87401

Ph (505) 632-0615 Fx (505) 632-1865

Three Springs - 65 Mercado Street, Suite 115, Durango, CO 81301

Ph (970) 259-0615 Fx (800) 362-1879





WPX Energy, Inc.	Project Name:	Chaco 2206-2P #227H	Reported:
PO Box 21218	Project Number:	04108-0006	24-Feb-14 10:31
Tulsa OK, 74121-1358	Project Manager:	Buddy Shaw	

Nonhalogenated Organics by 8015 - Quality Control

Envirotech Analytical Laboratory

Analyte	Result	Reporting Limit	Units	Spike Level	Source Result	%REC Limits	RPD Limit	Notes
<b>Batch 1408007 - Purge and Trap EPA 5030A</b>								
<b>Blank (1408007-BLK1)</b> Prepared: 18-Feb-14 Analyzed: 20-Feb-14								
Gasoline Range Organics (C6-C10)	ND	4.99	mg/kg					
<b>Duplicate (1408007-DUP1)</b> Source: P402040-01 Prepared: 18-Feb-14 Analyzed: 20-Feb-14								
Gasoline Range Organics (C6-C10)	22.3	4.99	mg/kg		23.1		3.73	30
<b>Matrix Spike (1408007-MS1)</b> Source: P402040-01 Prepared: 18-Feb-14 Analyzed: 20-Feb-14								
Gasoline Range Organics (C6-C10)	0.85		mg/L	0.450	0.46	86.7	75-125	

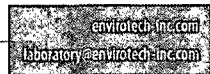
Partial or incomplete reproduction of this report is prohibited, unless approved by Envirotech, Inc.

5796 US Highway 64, Farmington, NM 87401

Ph (505) 632-0615 Fx (505) 632-1865

Three Springs - 65 Mercado Street, Suite 115, Durango, CO 81301

Ph (970) 259-0615 Fr (800) 362-1879







WPX Energy, Inc.  
PO Box 21218  
Tulsa OK, 74121-1358

Project Name: Chaco 2206-2P #227H  
Project Number: 04108-0006  
Project Manager: Buddy Shaw

Reported:  
24-Feb-14 10:31

**Total Petroleum Hydrocarbons by 418.1 - Quality Control**

**Envirotech Analytical Laboratory**

Analyte	Result	Reporting Limit	Units	Spike Level	Source Result	%REC Limits	RPD Limit	Notes
---------	--------	--------------------	-------	----------------	------------------	----------------	--------------	-------

**Batch 1408005 - 418 Freon Extraction**

**Blank (1408005-BLK1)**

Prepared & Analyzed: 18-Feb-14

Total Petroleum Hydrocarbons 75.8 19.9 mg/kg

**Duplicate (1408005-DUP1)**

Source: P402040-01

Prepared & Analyzed: 18-Feb-14

Total Petroleum Hydrocarbons 327 20.0 mg/kg 323 1.25 30

**Matrix Spike (1408005-MS1)**

Source: P402040-01

Prepared & Analyzed: 18-Feb-14

Total Petroleum Hydrocarbons 2270 19.9 mg/kg 1990 323 97.8 80-120

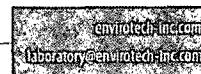
Partial or incomplete reproduction of this report is prohibited, unless approved by Envirotech, Inc.

5796 US Highway 64, Farmington, NM 87401

Ph (505) 632-0615 Fx (505) 632-1865

Three Springs - 65 Mercado Street, Suite 115, Durango, CO 81301

Ph (970) 259-0615 Fx (300) 362-1879





WPX Energy, Inc.  
PO Box 21218  
Tulsa OK, 74121-1358

Project Name: Chaco 2206-2P #227H  
Project Number: 04108-0006  
Project Manager: Buddy Shaw

Reported:  
24-Feb-14 10:31

**Cation/Anion Analysis - Quality Control**

**Envirotech Analytical Laboratory**

Analyte	Result	Reporting Limit	Units	Spike Level	Source Result	%REC Limits	RPD Limit	Notes
<b>Batch 1408008 - Anion Extraction EPA 300.0</b>								
<b>Blank (1408008-BLK1)</b>								
Chloride	ND	9.99	mg/kg					Prepared & Analyzed: 19-Feb-14
<b>LCS (1408008-BS1)</b>								
Chloride	498	9.90	mg/kg	495		101	90-110	Prepared & Analyzed: 19-Feb-14
<b>Matrix Spike (1408008-MS1)</b>								
Chloride	506	9.99	mg/kg	500	ND	101	80-120	Source: P402039-01 Prepared & Analyzed: 19-Feb-14
<b>Matrix Spike Dup (1408008-MSD1)</b>								
Chloride	504	9.89	mg/kg	495	ND	102	80-120	Source: P402039-01 Prepared & Analyzed: 19-Feb-14

Partial or incomplete reproduction of this report is prohibited, unless approved by Envirotech, Inc.

5796 US Highway 64, Farmington, NM 87401

Ph (505) 632-0615 Fx (505) 632-1865

Three Springs - 65 Mercado Street, Suite 115, Durango, CO 81301

Ph (970) 259-0615 Fr (800) 362-1879





WEX Energy, Inc.	Project Name:	Chaco 2206-2P #227H	Reported:
PO Box 21218	Project Number:	04108-0006	24-Feb-14 10:31
Tulsa OK, 74121-1358	Project Manager:	Buddy Shaw	

#### Notes and Definitions

SPK1 The spike recovery for this QC sample is outside of control limits.

B Analyte is found in the associated blank.

DET Analyte DETECTED

ND Analyte NOT DETECTED at or above the reporting limit

NR Not Reported

dry Sample results reported on a dry weight basis

RPD Relative Percent Difference

Partial or incomplete reproduction of this report is prohibited, unless approved by Envirotech, Inc.

5796 US Highway 64, Farmington, NM 87401

Ph (505) 632-0615 Fx (505) 632-1865

Three Springs • 65 Mercado Street, Suite 115, Durango, CO 81301

Ph (970) 259-0615 Fr (800) 362-1879







## TEMPORARY PIT INSPECTION REPORT

Well Name	CHACO 2206-02P #227H	Field Name	Lybrook	API #		Report #	1
Location		County	Sandoval	State	NM	Rpt Date	10/28/2013

Date	Report Type	Liner Intact Y/N	Fenced Y/N	Slopes Intact Y/N	Adequate Freeboard Y/N	Oil Free Y/N	Flare Pit Liquid Free Y/N	Comment
10/28/13	Daily	Y	Y	Y	Y	Y	Y	TEMPORARY PIT / NO LEAKS, NO SPILLS
10/29/13	Daily	Y	Y	Y	Y	Y	Y	TEMPORARY PIT / NO LEAKS, NO SPILLS
10/30/13	Daily	Y	Y	Y	Y	Y	Y	TEMPORARY PIT / NO LEAKS, NO SPILLS
10/31/13	Daily	Y	Y	Y	Y	Y	Y	TEMPORARY PIT / NO LEAKS, NO SPILLS
11/1/13	Daily	Y	Y	Y	Y	Y	Y	TEMPORARY PIT / NO LEAKS, NO SPILLS
11/2/13	Daily	Y	Y	Y	Y	Y	Y	TEMPORARY PIT / NO LEAKS, NO SPILLS
11/3/13	Daily	Y	Y	Y	Y	Y	Y	TEMPORARY PIT / NO LEAKS, NO SPILLS
11/4/13	Daily	Y	Y	Y	Y	Y	Y	TEMPORARY PIT / NO LEAKS, NO SPILLS
11/5/13	Daily	Y	Y	Y	Y	Y	Y	TEMPORARY PIT / NO LEAKS, NO SPILLS
11/6/13	Daily	Y	Y	Y	Y	Y	Y	TEMPORARY PIT / NO LEAKS, NO SPILLS
11/7/13	Daily	Y	Y	Y	Y	Y	Y	TEMPORARY PIT / NO LEAKS, NO SPILLS
11/8/13	Daily	Y	Y	Y	Y	Y	Y	TEMPORARY PIT / NO LEAKS, NO SPILLS
11/9/13	Daily	Y	Y	Y	Y	Y	Y	TEMPORARY PIT / NO LEAKS, NO SPILLS
11/10/13	Daily	Y	Y	Y	Y	Y	Y	TEMPORARY PIT / NO LEAKS, NO SPILLS
11/11/13	Daily	Y	Y	Y	Y	Y	Y	TEMPORARY PIT / NO LEAKS, NO SPILLS
11/12/13	Daily	Y	Y	Y	Y	Y	Y	TEMPORARY PIT / NO LEAKS, NO SPILLS
11/13/13	Daily	Y	Y	Y	Y	Y	Y	TEMPORARY PIT / NO LEAKS, NO SPILLS
11/14/13	Daily	Y	Y	Y	Y	Y	Y	TEMPORARY PIT / NO LEAKS, NO SPILLS
11/15/13	Daily	Y	Y	Y	Y	Y	Y	TEMPORARY PIT / NO LEAKS, NO SPILLS
11/16/13	Daily	Y	Y	Y	Y	Y	Y	TEMPORARY PIT / NO LEAKS, NO SPILLS

2001-2009 WellEz Information Management, LLC. All rights reserved ver. 11/709jc

District I  
1625 N. French Drive, Hobbs, NM 88240  
Phone (575) 393-6161 Fax: (575) 393-0720

District II  
811 S. First Street, Artesia, NM 88210  
Phone: (575) 748-1263 Fax: (575) 748-9720

District III  
1000 Rio Brazos Road, Aztec, NM 87410  
Phone: (505) 334-6178 Fax: (505) 334-6170

District IV  
1220 S. St. Francis Drive, Santa Fe, NM 87505  
Phone: (505) 476-3460 Fax: (505) 476-3462

State of New Mexico  
Energy, Minerals & Natural Resources Department

Form C-102  
Revised August 1, 2011

Submit one copy to  
Appropriate District Office

OIL CONSERVATION DIVISION  
1220 South St. Francis Drive  
Santa Fe, NM 87505

☐ AMENDED REPORT

WELL LOCATION AND ACREAGE DEDICATION PLAT

*API Number	*Pool Code 42289	*Pool Name LYBROOK GALLUP
*Property Code	*Property Name CHACO 2206-02P	*Well Number 227H
*GRID No. 120782	*Operator Name WPX ENERGY PRODUCTION, LLC	*Elevation 6944'

10 Surface Location

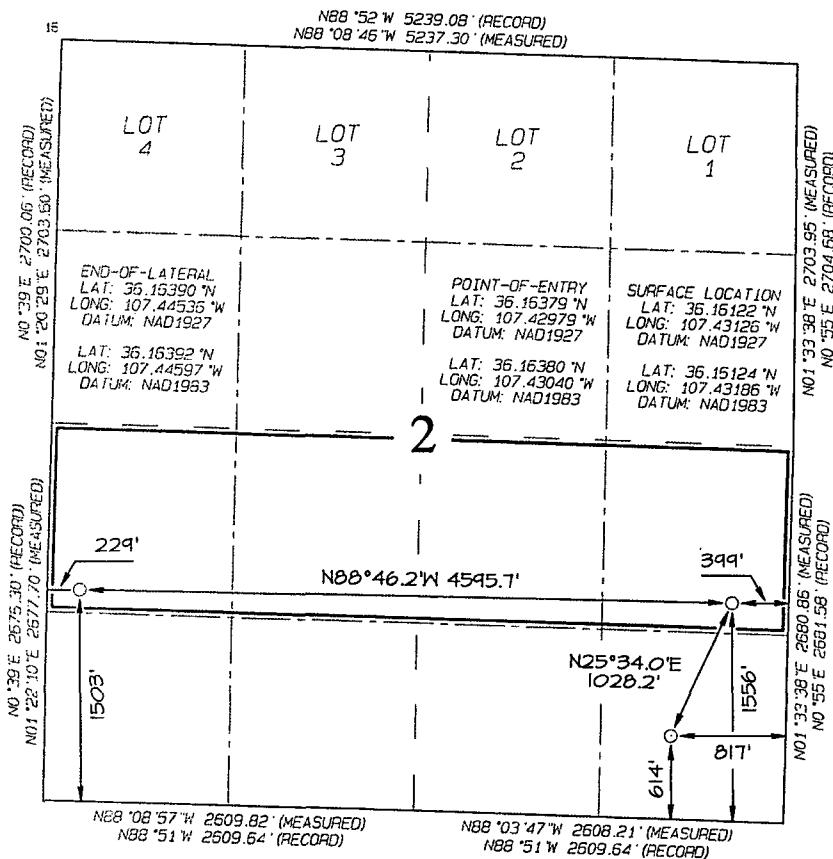
UL or Lot No.	Section	Township	Range	Lot Ion	Feet from the	North/South line	Feet from the	East/West line	County
P	2	22N	6W		614	SOUTH	817	EAST	SANDOVAL

11 Bottom Hole Location If Different From Surface

UL or Lot No.	Section	Township	Range	Lot Ion	Feet from the	North/South line	Feet from the	East/West line	County
L	2	22N	6W		1503	SOUTH	229	WEST	SANDOVAL

*Dedicated Acres 160.0 Acres - (N/2 S/2)	*Joint or Infill	*Consolidation Code	*Order No.
---	------------------	---------------------	------------

NO ALLOWABLE WILL BE ASSIGNED TO THIS COMPLETION UNTIL ALL INTERESTS HAVE BEEN CONSOLIDATED  
OR A NON-STANDARD UNIT HAS BEEN APPROVED BY THE DIVISION



17 OPERATOR CERTIFICATION  
I hereby certify that the information contained herein is true and complete to the best of my knowledge and belief, and that this organization either owns a working interest or unleased mineral interest in the land including the proposed bottom-hole location or has a right to drill this well at this location pursuant to a contract with an owner of such a mineral or working interest, or to a voluntary pooling agreement or a compulsory pooling order heretofore entered by the division.

Signature	Date
Printed Name	
E-mail Address	

15 SURVEYOR CERTIFICATION  
I hereby certify that the well location shown on this plat was plotted from field notes of actual surveys made by me or under my supervision, and that the same is true and correct to the best of my belief.

Date Revised: NOVEMBER 19, 2013  
Date of Survey: JUNE 8, 2012

Signature and Seal of Professional Surveyor



Jason C. Edwards  
Certificate Number 15269

**From:** Johnny [johnny@adobecontractorsinc.com]  
**Sent:** Tuesday, February 11, 2014 2:04 PM  
**To:** Brandon Powell  
**Cc:** Granillo, Lacey; Riley, Heather; Higgins, Larry; Heil, Mark; Shaw, Buddy; Fields, Vanessa  
**Subject:** Notice of closure for cuttings pit on WPX Chaco 2206-2P #227H

Brandon,

I had sent you a notice on this back in December but we were not able to close this pit at that time due to other activity on the well pad. We are now going to close this pit by the end of this week. Please let me know if you have any questions.

Thank you,

Johnny R. Stinson  
General Manager  
Adobe Contractors Inc.  
Office: 505-632-1486  
Fax: 505-632-9807  
Mobile: 505-320-6076  
[johnny@adobecontractorsinc.com](mailto:johnny@adobecontractorsinc.com)

**From:** Johnny [johnny@adobecontractorsinc.com]  
**Sent:** Friday, December 13, 2013 2:13 PM  
**To:** Brandon Powell  
**Cc:** Granillo, Lacey; Higgins, Larry; Riley, Heather  
**Subject:** Pit closure notice for WPX Energy Chaco 2206-2P #227H

Brandon,

We will be closing the pit on this location on Tuesday 12/17. Please let me know if you have any questions.

Thank you,

Johnny R. Stinson  
General Manager  
Adobe Contractors Inc.  
Office: 505-632-1486  
Fax: 505-632-9807  
Mobile: 505-320-6076  
[johnny@adobecontractorsinc.com](mailto:johnny@adobecontractorsinc.com)

Submit To Appropriate District Office  
Two Copies  
District I  
1625 N. French Dr., Hobbs, NM 88240  
District II  
811 S. First St., Artesia, NM 88210  
District III  
1000 Rio Brazos Rd., Aztec, NM 87410  
District IV  
1220 S. St. Francis Dr., Santa Fe, NM 87505

State of New Mexico  
Energy, Minerals and Natural Resources

Oil Conservation Division  
1220 South St. Francis Dr.  
Santa Fe, NM 87505

Form C-105  
Revised August 1, 2011

1. WELL API NO.

30-043-21148

2. Type of Lease

☒ STATE ☐ FEE ☐ FED/INDIAN

3. State Oil & Gas Lease No.  
V092090

WELL COMPLETION OR RECOMPLETION REPORT AND LOG

4. Reason for filing:

☐ COMPLETION REPORT (Fill in boxes #1 through #31 for State and Fee wells only)

☒ C-144 CLOSURE ATTACHMENT (Fill in boxes #1 through #9, #15 Date Rig Released and #32 and/or #33; attach this and the plat to the C-144 closure report in accordance with 19.15.17.13.K NMAC)

7. Type of Completion:

☒ NEW WELL ☐ WORKOVER ☐ DEEPENING ☐ PLUGBACK ☐ DIFFERENT RESERVOIR ☐ OTHER

8. Name of Operator

WPX Energy Production, LLC

10. Address of Operator

PO Box 640 / 721 South Main Aztec, NM 87410

5. Lease Name or Unit Agreement Name

Chaco 2206-2P

6. Well Number: #227H

9. OGRID

120782

11. Pool name or Wildcat

Lybrook/Gallup

12. Location	Unit Ltr	Section	Township	Range	Lot	Feet from the	N/S Line	Feet from the	E/W Line	County
--------------	----------	---------	----------	-------	-----	---------------	----------	---------------	----------	--------

Surface:

BH:

13. Date Spudded	14. Date T.D. Reached	15. Date Rig Released 10/16/2013	16. Date Completed (Ready to Produce)	17. Elevations (DF and RKB, RT, GR, etc.)
------------------	-----------------------	-------------------------------------	---------------------------------------	--

18. Total Measured Depth of Well	19. Plug Back Measured Depth	20. Was Directional Survey Made?	21. Type Electric and Other Logs Run
----------------------------------	------------------------------	----------------------------------	--------------------------------------

22. Producing Interval(s), of this completion - Top, Bottom, Name

23. CASING RECORD (Report all strings set in well)

CASING SIZE	WEIGHT LB./FT.	DEPTH SET	HOLE SIZE	CEMENTING RECORD	AMOUNT PULLED

24. LINER RECORD

25. TUBING RECORD

SIZE	TOP	BOTTOM	SACKS CEMENT	SCREEN	SIZE	DEPTH SET	PACKER SET

26. Perforation record (interval, size, and number)

27. ACID, SHOT, FRACTURE, CEMENT, SQUEEZE, ETC.

DEPTH INTERVAL	AMOUNT AND KIND MATERIAL USED

28. PRODUCTION

Date First Production	Production Method (Flowing, gas lift, pumping - Size and type pump)	Well Status (Prod. or Shut-in)
-----------------------	---	--------------------------------

Date of Test	Hours Tested	Choke Size	Prod'n For Test Period	Oil - Bbl	Gas - MCF	Water - Bbl.	Gas - Oil Ratio
--------------	--------------	------------	---------------------------	-----------	-----------	--------------	-----------------

Flow Tubing Press.	Casing Pressure	Calculated 24- Hour Rate	Oil - Bbl.	Gas - MCF	Water - Bbl.	Oil Gravity - API - (Corr.)
-----------------------	-----------------	-----------------------------	------------	-----------	--------------	-----------------------------

29. Disposition of Gas (Sold, used for fuel, vented, etc.)

30. Test Witnessed By

31. List Attachments

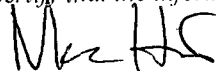
32. If a temporary pit was used at the well, attach a plat with the location of the temporary pit.

33. If an on-site burial was used at the well, report the exact location of the on-site burial:

Latitude 36.16062 Longitude -107.43187 NAD 1983

I hereby certify that the information shown on both sides of this form is true and complete to the best of my knowledge and belief

Signature



Printed

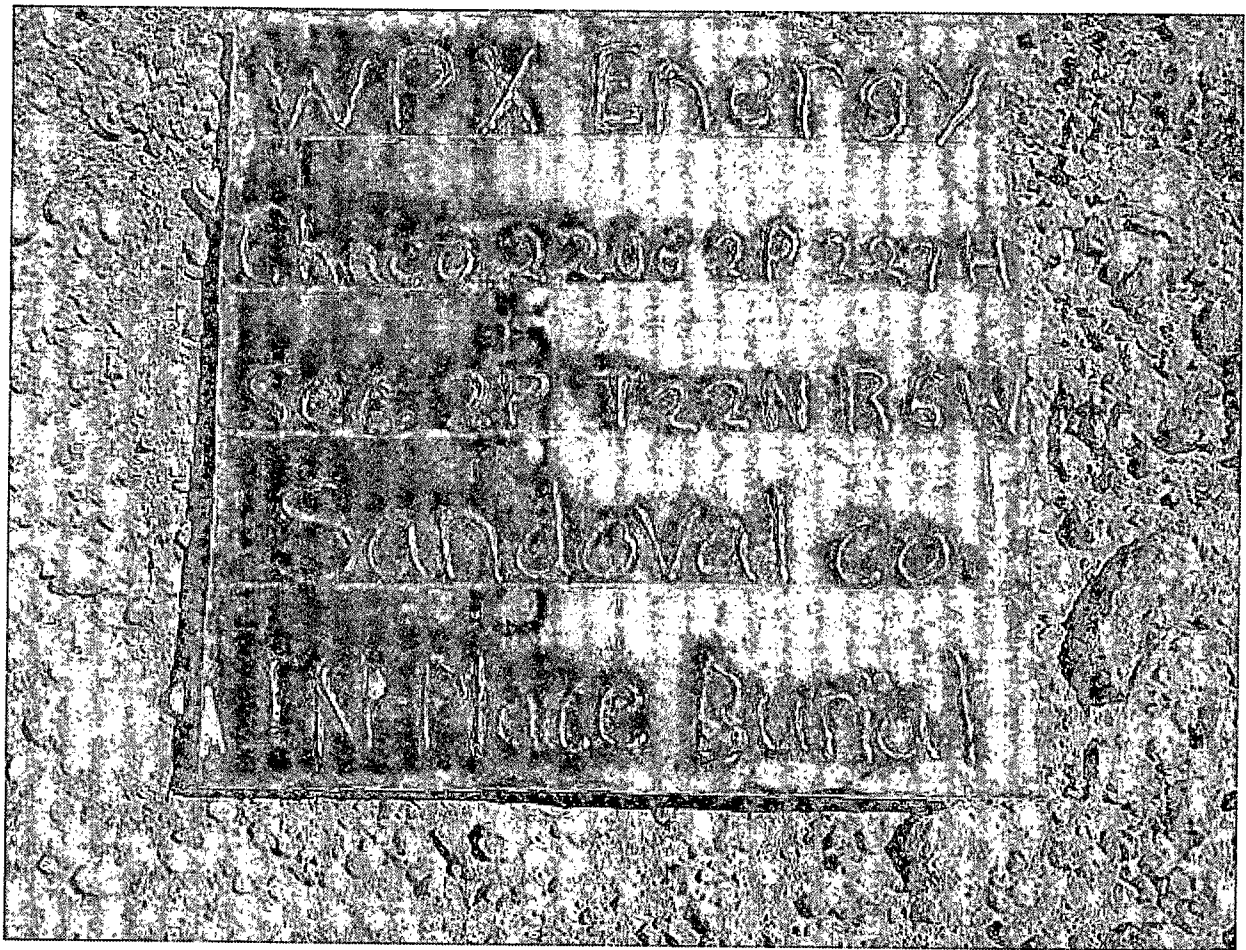
Name: Mark Heil

Title: Regulatory Specialist

Date: 7/30/2014

E-mail Address: mark.heil@wpenergy.com





WPX Energy Production  
San Juan Basin Operations  
720 So. Main / PO Box 640  
Aztec, NM 87410  
505-333-1806 / 505-333-1805 fax

### Temporary Pit Inspection

#### FACILITY INFORMATION

Facility Name: CHACO 2206-02P #227H	API #:30-043-21147
-------------------------------------	--------------------

Pit Type: <input checked="" type="checkbox"/> Drilling <input type="checkbox"/> Workover <input type="checkbox"/> Cavitation	Inspection: <input type="checkbox"/> Daily (Rig) <input checked="" type="checkbox"/> Weekly (Tech)
--	--

Pit Liner intact	<input checked="" type="checkbox"/> Yes <input type="checkbox"/> No If No, Report to EH&S immediately	Date / Time Reported:
Pit Properly Fenced	<input checked="" type="checkbox"/> Yes <input type="checkbox"/> No <input type="checkbox"/> Not Required (if site fully fenced) If No, Report to EH&S immediately	
Pit Slopes intact	<input checked="" type="checkbox"/> Yes <input type="checkbox"/> No If No, Report to EH&S immediately	
Adequate freeboard	<input checked="" type="checkbox"/> Yes <input type="checkbox"/> No <input type="checkbox"/> Not Applicable If No, Report to EH&S immediately	
Free oil or sheen present on pit	<input checked="" type="checkbox"/> Yes <input type="checkbox"/> No If Yes, Report to EH&S immediately	
Flare Pit free of liquids	<input type="checkbox"/> Yes <input type="checkbox"/> No <input checked="" type="checkbox"/> Not Applicable If No, Report to EH&S immediately	
Date liquids pulled (Liquids must be pulled within 30 days of rig off date)	<input type="checkbox"/> Drill Rig <input type="checkbox"/> Completion Rig Date Liquids Pulled:	
Comments: Liquid in pit possible rain water		
Inspector Signature: <i>Cody Boyd</i>		
Printed Name: Cody Boyd		
Title: Field Technician Rosa South		
Date: 11/29/2013 Phone: (505)386-8672		

Record Retention: Submit with Closure

WPX Energy Production  
San Juan Basin Operations  
720 So. Main / PO Box 640  
Aztec, NM 87410  
505-333-1806 / 505-333-1805 fax

**Temporary Pit Inspection**

**FACILITY INFORMATION**

<b>Facility Name:</b> CHACO 2206-02P #227H	<b>API #:</b> 30-043-21147
--	----------------------------

<b>Pit Type:</b> <input checked="" type="checkbox"/> Drilling <input type="checkbox"/> Workover <input type="checkbox"/> Cavitation	<b>Inspection:</b> <input type="checkbox"/> Daily (Rig) <input checked="" type="checkbox"/> Weekly (Tech)
---	---

Pit Liner intact	<input checked="" type="checkbox"/> Yes <input type="checkbox"/> No If No, Report to EH&S immediately	Date / Time Reported:
Pit Properly Fenced	<input checked="" type="checkbox"/> Yes <input type="checkbox"/> No <input type="checkbox"/> Not Required (if site fully fenced) If No, Report to EH&S immediately	
Pit Slopes intact	<input checked="" type="checkbox"/> Yes <input type="checkbox"/> No If No, Report to EH&S immediately	
Adequate freeboard	<input checked="" type="checkbox"/> Yes <input type="checkbox"/> No <input type="checkbox"/> Not Applicable If No, Report to EH&S immediately	
Free oil or sheen present on pit	<input checked="" type="checkbox"/> Yes <input type="checkbox"/> No If Yes, Report to EH&S immediately	
Flare Pit free of liquids	<input type="checkbox"/> Yes <input type="checkbox"/> No <input checked="" type="checkbox"/> Not Applicable If No, Report to EH&S immediately	
Date liquids pulled (Liquids must be pulled within 30 days of rig off date)	<input type="checkbox"/> Drill Rig <input type="checkbox"/> Completion Rig Date Liquids Pulled:	
Comments: Liquid in pit possible rain water and snow.		
Inspector Signature: <i>Cody Boyd</i>		
Printed Name: Cody Boyd		
Title: Field Technician Rosa South		
Date: 12/9/2013 Phone: (505)386-8672		

Record Retention: Submit with Closure

WPX Energy Production  
San Juan Basin Operations  
720 So. Main / PO Box 640  
Aztec, NM 87410  
505-333-1806 / 505-333-1805 fax

**Temporary Pit Inspection**

**FACILITY INFORMATION**

<b>Facility Name:</b> CHACO 2206-02P #227H	<b>API #:</b> 30-043-21147
--	----------------------------

<b>Pit Type:</b> <input checked="" type="checkbox"/> Drilling <input type="checkbox"/> Workover <input type="checkbox"/> Cavitation	<b>Inspection:</b> <input type="checkbox"/> Daily (Rig) <input checked="" type="checkbox"/> Weekly (Tech)
---	---

Pit Liner intact	<input checked="" type="checkbox"/> Yes <input type="checkbox"/> No If No, Report to EH&S immediately	Date / Time Reported:
Pit Properly Fenced	<input checked="" type="checkbox"/> Yes <input type="checkbox"/> No <input type="checkbox"/> Not Required (if site fully fenced) If No, Report to EH&S immediately	
Pit Slopes intact	<input checked="" type="checkbox"/> Yes <input type="checkbox"/> No If No, Report to EH&S immediately	
Adequate freeboard	<input checked="" type="checkbox"/> Yes <input type="checkbox"/> No <input type="checkbox"/> Not Applicable If No, Report to EH&S immediately	
Free oil or sheen present on pit	<input checked="" type="checkbox"/> Yes <input type="checkbox"/> No If Yes, Report to EH&S immediately	
Flare Pit free of liquids	<input type="checkbox"/> Yes <input type="checkbox"/> No <input checked="" type="checkbox"/> Not Applicable If No, Report to EH&S immediately	
Date liquids pulled (Liquids must be pulled within 30 days of rig off date)	<input type="checkbox"/> Drill Rig <input type="checkbox"/> Completion Rig Date Liquids Pulled:	
Comments: Liquid in pit possible rain water and snow.		
Inspector Signature: <i>Cody Boyd</i>		
Printed Name: Cody Boyd		
Title: Field Technician Rosa South		
Date: 12/12/2013 Phone: (505)386-8672		

Record Retention: Submit with Closure

WPX Energy Production  
San Juan Basin Operations  
720 So. Main / PO Box 640  
Aztec, NM 87410  
505-333-1806 / 505-333-1805 fax

**Temporary Pit Inspection**

**FACILITY INFORMATION**

<b>Facility Name:</b> CHACO 2206-02P #227H	<b>API #:</b> 30-043-21147
--	----------------------------

<b>Pit Type:</b> <input checked="" type="checkbox"/> Drilling <input type="checkbox"/> Workover <input type="checkbox"/> Cavitation	<b>Inspection:</b> <input type="checkbox"/> Daily (Rig) <input checked="" type="checkbox"/> Weekly (Tech)
---	---

Pit Liner intact	<input checked="" type="checkbox"/> Yes <input type="checkbox"/> No If No, Report to EH&S immediately	Date / Time Reported:
Pit Properly Fenced	<input checked="" type="checkbox"/> Yes <input type="checkbox"/> No <input type="checkbox"/> Not Required (if site fully fenced) If No, Report to EH&S immediately	
Pit Slopes intact	<input checked="" type="checkbox"/> Yes <input type="checkbox"/> No If No, Report to EH&S immediately	
Adequate freeboard	<input checked="" type="checkbox"/> Yes <input type="checkbox"/> No <input type="checkbox"/> Not Applicable If No, Report to EH&S immediately	
Free oil or sheen present on pit	<input checked="" type="checkbox"/> Yes <input type="checkbox"/> No If Yes, Report to EH&S immediately	
Flare Pit free of liquids	<input type="checkbox"/> Yes <input type="checkbox"/> No <input checked="" type="checkbox"/> Not Applicable If No, Report to EH&S immediately	
Date liquids pulled (Liquids must be pulled within 30 days of rig off date)	<input type="checkbox"/> Drill Rig <input type="checkbox"/> Completion Rig Date Liquids Pulled:	
Comments: Liquid in pit possible rain water and snow.		
Inspector Signature: <i>Cody Boyd</i>		
Printed Name: Cody Boyd		
Title: Field Technician Rosa South		
Date: 1/18/2014 Phone: (505)386-8672		

Record Retention: Submit with Closure

WPX Energy Production  
San Juan Basin Operations  
720 So. Main / PO Box 640  
Aztec, NM 87410  
505-333-1806 / 505-333-1805 fax

### Temporary Pit Inspection

#### FACILITY INFORMATION

Facility Name: CHACO 2206-02P #227H	API #:30-043-21147
-------------------------------------	--------------------

Pit Type: <input checked="" type="checkbox"/> Drilling <input type="checkbox"/> Workover <input type="checkbox"/> Cavitation	Inspection: <input type="checkbox"/> Daily (Rig) <input checked="" type="checkbox"/> Weekly (Tech)
--	--

Pit Liner intact	<input checked="" type="checkbox"/> Yes <input type="checkbox"/> No If No, Report to EH&S immediately	Date / Time Reported:
Pit Properly Fenced	<input checked="" type="checkbox"/> Yes <input type="checkbox"/> No <input type="checkbox"/> Not Required (if site fully fenced) If No, Report to EH&S immediately	
Pit Slopes intact	<input checked="" type="checkbox"/> Yes <input type="checkbox"/> No If No, Report to EH&S immediately	
Adequate freeboard	<input checked="" type="checkbox"/> Yes <input type="checkbox"/> No <input type="checkbox"/> Not Applicable If No, Report to EH&S immediately	
Free oil or sheen present on pit	<input checked="" type="checkbox"/> Yes <input type="checkbox"/> No If Yes, Report to EH&S immediately	
Flare Pit free of liquids	<input type="checkbox"/> Yes <input type="checkbox"/> No <input checked="" type="checkbox"/> Not Applicable If No, Report to EH&S immediately	
Date liquids pulled (Liquids must be pulled within 30 days of rig off date)	<input type="checkbox"/> Drill Rig <input type="checkbox"/> Completion Rig Date Liquids Pulled:	
Comments: Liquid in pit possible rain water and snow.		
Inspector Signature: <i>Cody Boyd</i>		
Printed Name: Cody Boyd		
Title: Field Technician Rosa South		
Date: 1/25/2014 Phone: (505)386-8672		

Record Retention: Submit with Closure

WPX Energy Production  
San Juan Basin Operations  
720 So. Main / PO Box 640  
Aztec, NM 87410  
505-333-1806 / 505-333-1805 fax

### Temporary Pit Inspection

#### FACILITY INFORMATION

Facility Name: CHACO 2206-02P #227H	API #:30-043-21147
-------------------------------------	--------------------

Pit Type: <input checked="" type="checkbox"/> Drilling <input type="checkbox"/> Workover <input type="checkbox"/> Cavitation	Inspection: <input type="checkbox"/> Daily (Rig) <input checked="" type="checkbox"/> Weekly (Tech)
--	--

Pit Liner intact	<input checked="" type="checkbox"/> Yes <input type="checkbox"/> No If No, Report to EH&S immediately	Date / Time Reported:
Pit Properly Fenced	<input checked="" type="checkbox"/> Yes <input type="checkbox"/> No <input type="checkbox"/> Not Required (if site fully fenced) If No, Report to EH&S immediately	
Pit Slopes intact	<input checked="" type="checkbox"/> Yes <input type="checkbox"/> No If No, Report to EH&S immediately	
Adequate freeboard	<input checked="" type="checkbox"/> Yes <input type="checkbox"/> No <input type="checkbox"/> Not Applicable If No, Report to EH&S immediately	
Free oil or sheen present on pit	<input checked="" type="checkbox"/> Yes <input type="checkbox"/> No If Yes, Report to EH&S immediately	
Flare Pit free of liquids	<input type="checkbox"/> Yes <input type="checkbox"/> No <input checked="" type="checkbox"/> Not Applicable If No, Report to EH&S immediately	
Date liquids pulled (Liquids must be pulled within 30 days of rig off date)	<input type="checkbox"/> Drill Rig <input type="checkbox"/> Completion Rig Date Liquids Pulled:	
Comments: Liquid in pit possible rain water and snow.		
Inspector Signature: <i>Cody Boyd</i>		
Printed Name: Cody Boyd		
Title: Field Technician Chaco Slope		
Date: 2/1/2014 Phone: (505)386-8672		

Record Retention: Submit with Closure

WPX Energy Production  
San Juan Basin Operations  
720 So. Main / PO Box 640  
Aztec, NM 87410  
505-333-1806 / 505-333-1805 fax

**Temporary Pit Inspection**

**FACILITY INFORMATION**

<b>Facility Name:</b> CHACO 2206-02P #227H	<b>API #:</b> 30-043-21147
--	----------------------------

<b>Pit Type:</b> <input checked="" type="checkbox"/> Drilling <input type="checkbox"/> Workover <input type="checkbox"/> Cavitation	<b>Inspection:</b> <input type="checkbox"/> Daily (Rig) <input checked="" type="checkbox"/> Weekly (Tech)
---	---

Pit Liner intact	<input checked="" type="checkbox"/> Yes <input type="checkbox"/> No If No, Report to EH&S immediately	Date / Time Reported:
Pit Properly Fenced	<input checked="" type="checkbox"/> Yes <input type="checkbox"/> No <input type="checkbox"/> Not Required (if site fully fenced) If No, Report to EH&S immediately	
Pit Slopes intact	<input checked="" type="checkbox"/> Yes <input type="checkbox"/> No If No, Report to EH&S immediately	
Adequate freeboard	<input checked="" type="checkbox"/> Yes <input type="checkbox"/> No <input type="checkbox"/> Not Applicable If No, Report to EH&S immediately	
Free oil or sheen present on pit	<input checked="" type="checkbox"/> Yes <input type="checkbox"/> No If Yes, Report to EH&S immediately	
Flare Pit free of liquids	<input type="checkbox"/> Yes <input type="checkbox"/> No <input checked="" type="checkbox"/> Not Applicable If No, Report to EH&S immediately	
Date liquids pulled (Liquids must be pulled within 30 days of rig off date)	<input type="checkbox"/> Drill Rig <input type="checkbox"/> Completion Rig Date Liquids Pulled:	
Comments: Liquid in pit possible rain water and snow.		
Inspector Signature: <i>Cody Boyd</i>		
Printed Name: Cody Boyd		
Title: Field Technician Chaco Slope		
Date: 2/8/2014 Phone: (505)386-8672		

Record Retention: Submit with Closure



WPX Energy Production  
San Juan Basin Operations  
720 So. Main / PO Box 640  
Aztec, NM 87410  
505-333-1806 / 505-333-1805 fax

### Temporary Pit Inspection

#### FACILITY INFORMATION

Facility Name: CHACO 2206-02P #227H	API #:30-043-21147
-------------------------------------	--------------------

Pit Type: <input checked="" type="checkbox"/> Drilling <input type="checkbox"/> Workover <input type="checkbox"/> Cavitation	Inspection: <input type="checkbox"/> Daily (Rig) <input checked="" type="checkbox"/> Weekly (Tech)
--	--

Pit Liner intact	<input checked="" type="checkbox"/> Yes <input type="checkbox"/> No If No, Report to EH&S immediately	Date / Time Reported:
Pit Properly Fenced	<input checked="" type="checkbox"/> Yes <input type="checkbox"/> No <input type="checkbox"/> Not Required (if site fully fenced) If No, Report to EH&S immediately	
Pit Slopes intact	<input checked="" type="checkbox"/> Yes <input type="checkbox"/> No If No, Report to EH&S immediately	
Adequate freeboard	<input checked="" type="checkbox"/> Yes <input type="checkbox"/> No <input type="checkbox"/> Not Applicable If No, Report to EH&S immediately	
Free oil or sheen present on pit	<input checked="" type="checkbox"/> Yes <input type="checkbox"/> No If Yes, Report to EH&S immediately	
Flare Pit free of liquids	<input type="checkbox"/> Yes <input type="checkbox"/> No <input checked="" type="checkbox"/> Not Applicable If No, Report to EH&S immediately	
Date liquids pulled (Liquids must be pulled within 30 days of rig off date)	<input type="checkbox"/> Drill Rig <input type="checkbox"/> Completion Rig Date Liquids Pulled:	
Comments: Liquid in pit possible rain water and snow.		
Inspector Signature: <i>Cody Boyd</i>		
Printed Name: Cody Boyd		
Title: Field Technician Chaco Slope		
Date: 2/15/2014 Phone: (505)386-8672		

Record Retention: Submit with Closure