

CHACO 2308-16I #148H
BASIN MC/NAGEEZI GL Horizontal
 (page 1)

Spud: 2/3/14

Completed: 5/27/14

Pulled tieback & run gas
 lift: 7/22/14

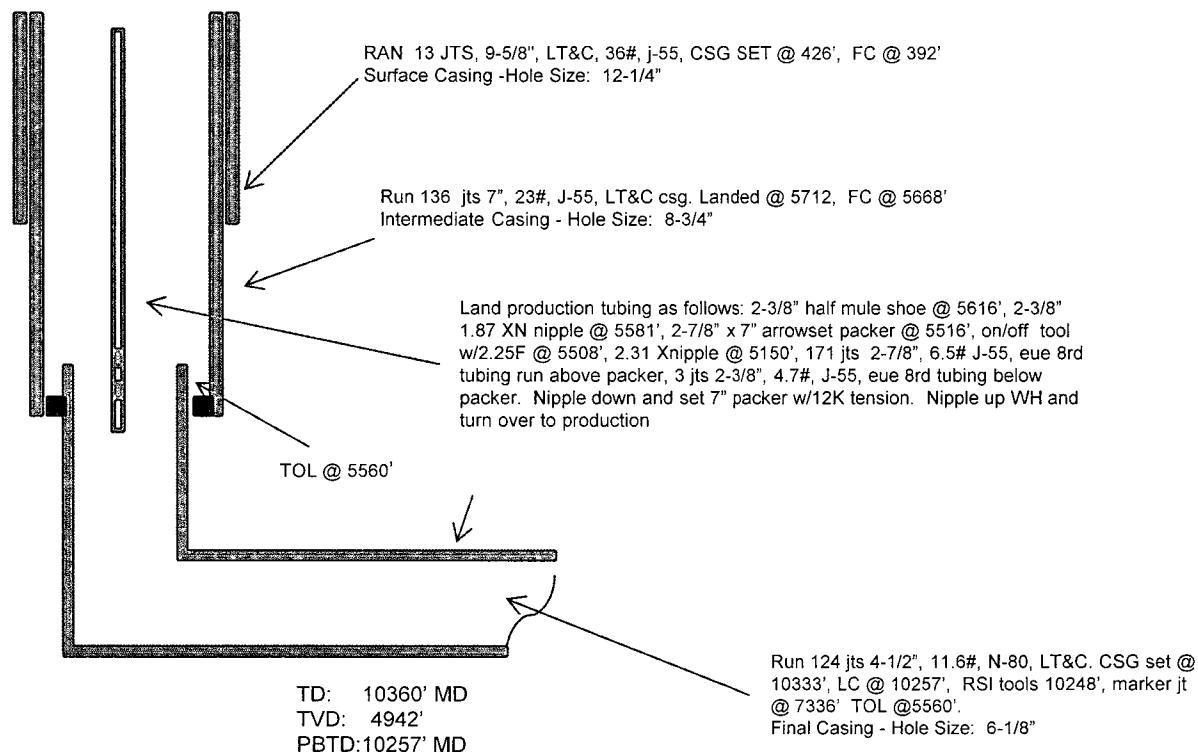
OIL CONS. DIV DIST. 3
JUL 23 2014

SHL: 1531' FSL & 281' FEL
 NE/4 NE/4 Section 16 (I), T23N, R8W

BHL: 378' FSL & 231' FWL
 SW/4 SW/4 Section 16(M), T23N, R 8W

SAN JUAN NM
Elevation: 6866'
API: 30-045-35500

<i>Tops</i>	<i>MD</i>	<i>TVD</i>
Ojo Alamo	837'	837'
Kirtland	984'	984'
Pictured Cliffs	1440'	1432'
Lewis	1643'	1628'
Chacra	1826'	1802'
Cliff House	2971'	2880'
Menefee	3018'	2925'
Point Lookout	3951'	3805'
Mancos	4148'	3991'
Gallup	4513'	4337'



HOLE SIZE	CASING	CEMENT	VOLUME	CMT TOP
12-1/4"	9-5/8"	250 sx	222 cu.ft.	Surface
8-3/4"	7"	822 sx	1225 cu. ft.	Surface
6-1/8"	4-1/2"	380 sx	1386 cu. ft.	TOL 5560'

LH 7/22/14

CHACO 2308-16I #148H

BASIN MC/NAGEEZI GL Horizontal

(page 2 – lateral with completion)

Gallup 15th:
5728'-5870'- with
24, 0.40" holes.
Frac Gallup 15th
stage with
240,042#, 20/40
PSA Sand

Gallup 13th:
6254'-6440'- with
24, 0.40"
holes. Frac Gallup
13th stage with
239,562#, 20/40
PSA Sand

Gallup 11th:
6830'-7014' –
with 24, 0.40" holes.
Frac Gallup 11th stage
with 265,000#, 20/40
PSA Sand

Gallup 9th:
7406'-7639'- with
24, 0.40" holes.
Frac Gallup 9th
stage with
200,200#, 20/40
PSA Sand

Gallup 7th:
8054'-8260'-
with 24, 0.40"
holes. Frac
Gallup 7th
stage with
200,800# ,
20/40 PSA
Sand

Gallup 6th:
8372'-8565'-
with 24, 0.40"
holes. Frac
Gallup 6th stage
with 201,300#,
20/40 PSA
Sand

Gallup 4th:
9008'-9280'-
with 24, 0.40"
holes. Frac
Gallup 4th stage
with 203,000#,
20/40 PSA
Sand

Gallup 1st:
10041'-10175' +
RSI TOOL @
10251' with 18,
0.40" holes.
10041'-10251'-
with 200,200 #
20/40 PSA
Sand

Gallup 14th:
5967'-6156'- with
24, 0.40" holes.
Frac Gallup 14th
stage with
239,674# , 20/40
PSA Sand

Gallup 12th:
6540'-6723'- with
24, 0.40" holes.
Frac Gallup 12th
stage with
239,095#, 20/40
PSA Sand

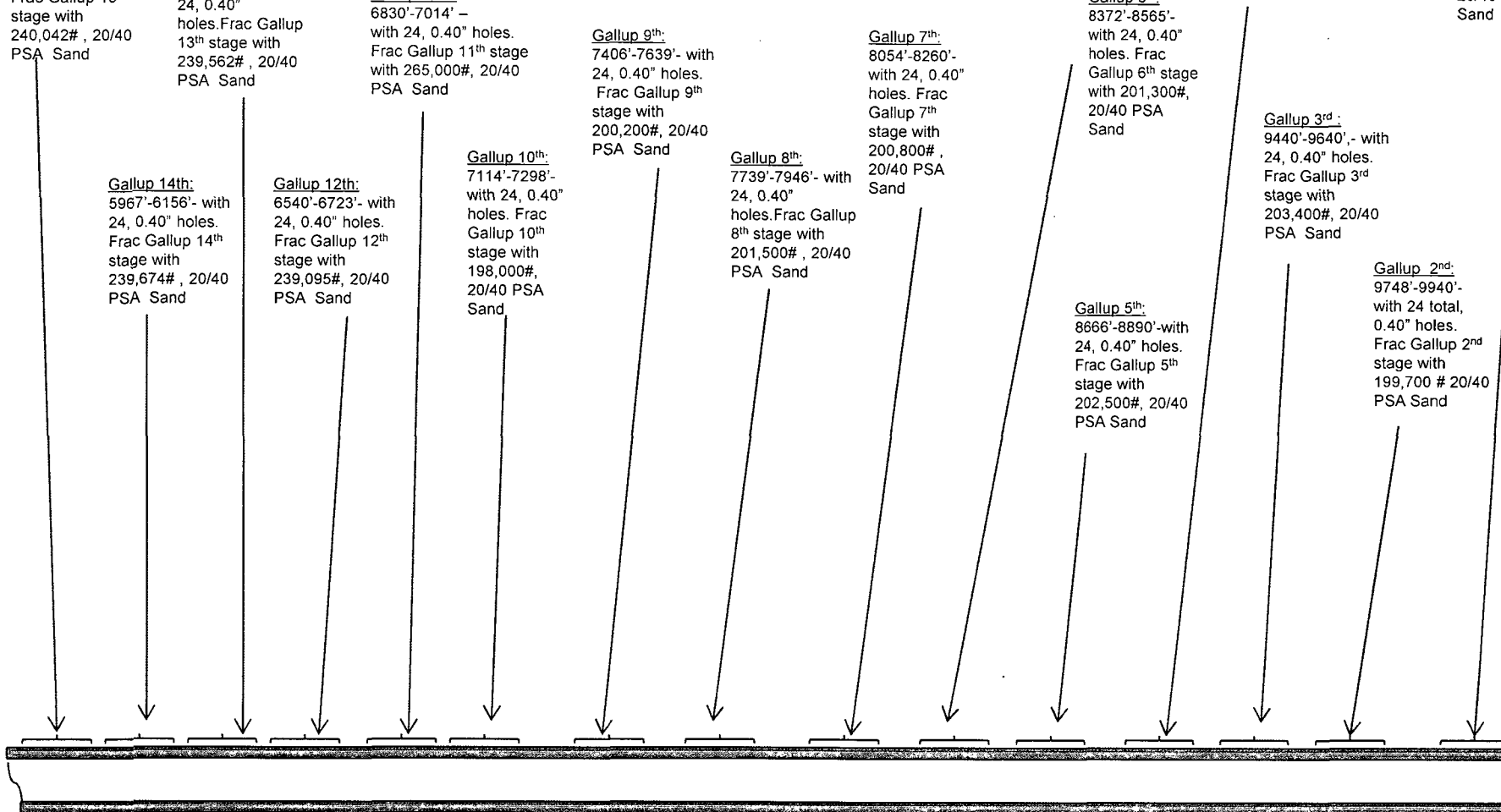
Gallup 10th:
7114'-7298'-
with 24, 0.40"
holes. Frac
Gallup 10th
stage with
198,000#,
20/40 PSA
Sand

Gallup 8th:
7739'-7946'- with
24, 0.40"
holes. Frac Gallup
8th stage with
201,500# , 20/40
PSA Sand

Gallup 5th:
8666'-8890'- with
24, 0.40" holes.
Frac Gallup 5th
stage with
202,500#, 20/40
PSA Sand

Gallup 3rd:
9440'-9640'- with
24, 0.40" holes.
Frac Gallup 3rd
stage with
203,400#, 20/40
PSA Sand

Gallup 2nd:
9748'-9940'-
with 24 total,
0.40" holes.
Frac Gallup 2nd
stage with
199,700 # 20/40
PSA Sand



See page 1 for upper portion of hole