

Chaco 2308-14E #151H

NAGEEZI GALLUP Horizontal

(page 1)

Spud: 4/9/14

Completed: 7/9/14

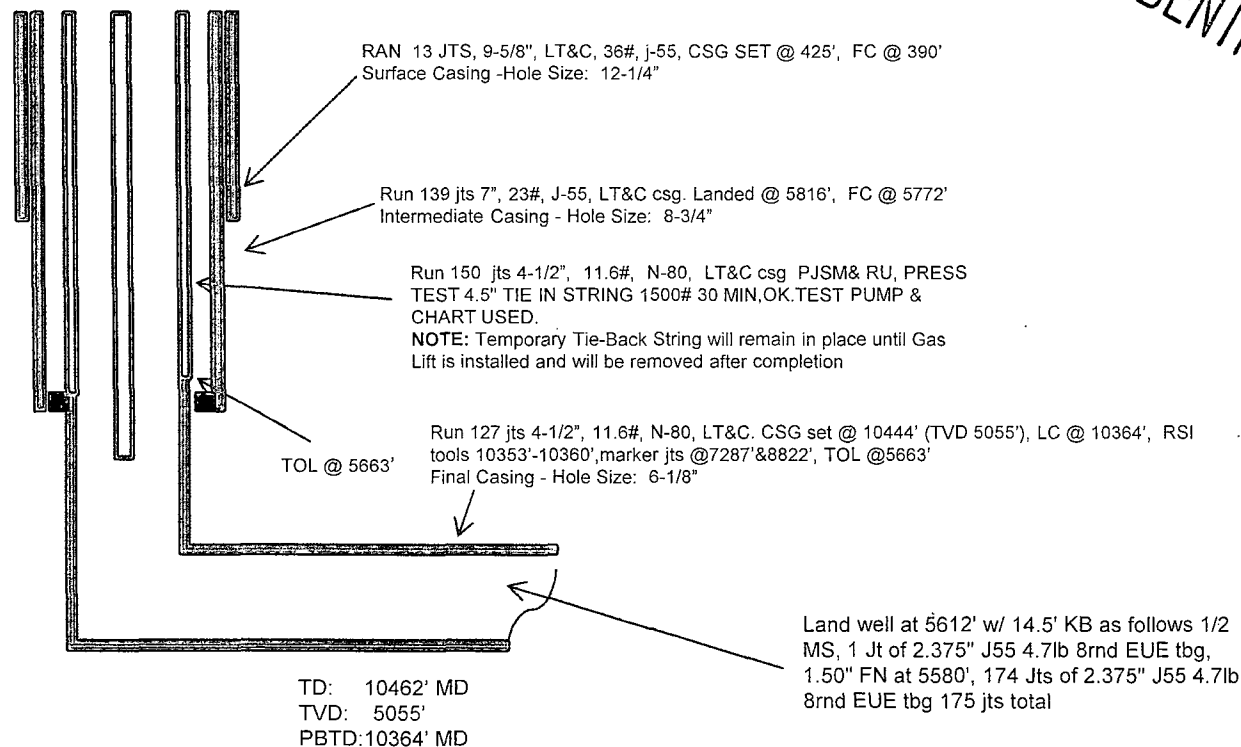
CONFIDENTIAL

SHL: 1426' FNL & 304' FWL
SW/4 NW/4 Section 14 (E), T23N, R8W

BHL: 390' FNL & 231' FWL
NW/4 NW/4 Section 15 (D), T23N, R 8W

SAN JUAN., NM
Elevation: 6889'
API: 30-045-35503

Tops	MD	TVD
Ojo Alamo	938'	936'
Kirtland	1118'	1113'
Pictured Cliffs	1559'	1539'
Lewis	1704'	1676'
Chacra	1976'	1931'
Cliff House	3125'	3008'
Menefee	3199'	3079'
Point Lookout	4100'	3941'
Mancos	4293'	4131'
Gallup	4644'	4482'



HOLE SIZE	CASING	CEMENT	VOLUME	CMT TOP
12-1/4"	9-5/8"	245 sx	222 cu.ft.	Surface
8-3/4"	7"	92 sx	1461 cu.ft.	Surface
6-1/8"	4-1/2"	380 sx	536 cu.ft.	TOL 5663'

Lg 7/9/14

Gallup 14th:
5954'-6260'- with
24, 0.40"
holes. Frac Gallup
14th stage with
262,300#, 20/40
PSA Sand

Chaco 2308-14E #151H NAGEEZI GALLUP Horizontal

(page 2 – lateral with completion)

Gallup 6th:
8530'-8709'-
with 24, 0.40"
holes. Frac
Gallup 6th stage
with 215,500# ,
20/40 PSA
Sand

Gallup 4th:
9110'-9340'-
with 24, 0.40"
holes. Frac
Gallup 4th stage
with 213,500# ,
20/40 PSA
Sand

Gallup 1st:
10122'-10278' +
RSI TOOL @
10360' with
212,500 # 20/40
PSA Sand

Gallup 13th:
6358'-6540'- with
24, 0.40"
holes. Frac Gallup
13th stage with
261,000# , 20/40
PSA Sand

Gallup 11th:
6924'-7126'-
with 24, 0.40" holes.
Frac Gallup 11th stage
with 264,900#, 20/40
PSA Sand

Gallup 9th:
7518'-7700'- with
24, 0.40" holes.
Frac Gallup 9th
stage with
216,000# , 20/40
PSA Sand

Gallup 7th:
8250'-8432'-
with 24, 0.40"
holes. Frac
Gallup 7th
stage with
213,500# ,
20/40 PSA
Sand

Gallup 5th:
8810'-8996'-with
24, 0.40" holes.
Frac Gallup 5th
stage with
224,900#, 20/40
PSA Sand

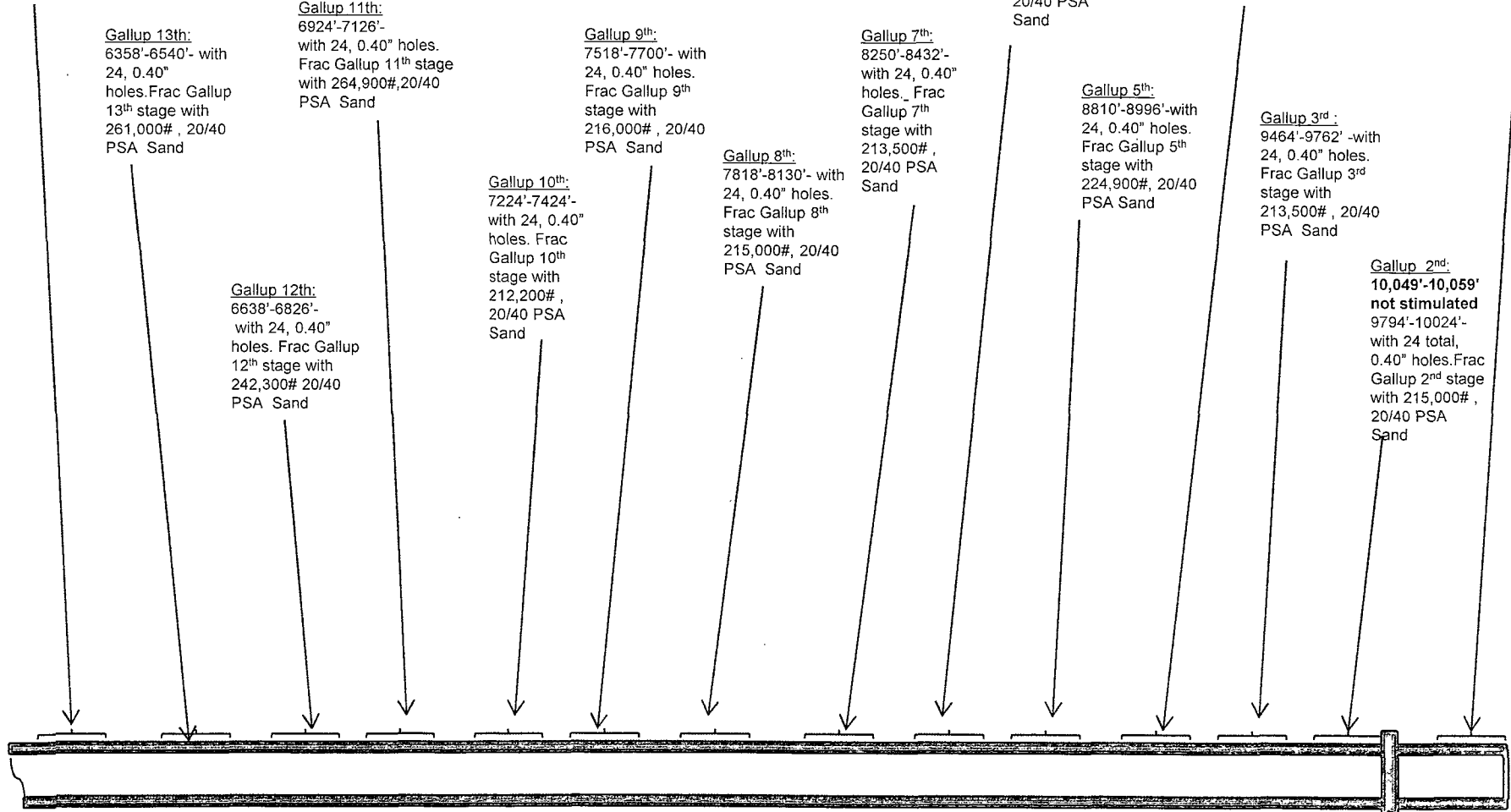
Gallup 3rd:
9464'-9762'-with
24, 0.40" holes.
Frac Gallup 3rd
stage with
213,500# , 20/40
PSA Sand

Gallup 2nd:
10,049'-10,059'
not stimulated
9794'-10024'-
with 24 total,
0.40" holes. Frac
Gallup 2nd stage
with 215,000# ,
20/40 PSA
Sand

Gallup 12th:
6638'-6826'-
with 24, 0.40"
holes. Frac Gallup
12th stage with
242,300# 20/40
PSA Sand

Gallup 10th:
7224'-7424'-
with 24, 0.40"
holes. Frac
Gallup 10th
stage with
212,200# ,
20/40 PSA
Sand

Gallup 8th:
7818'-8130'- with
24, 0.40" holes.
Frac Gallup 8th
stage with
215,000#, 20/40
PSA Sand



See page 1 for upper portion of hole

LEFT FLO
THRU CIBP
@10070' AND
DEAD PERF
GUN IN HOLE