

District I  
1625 N. French Dr., Hobbs, NM 88240  
District II  
5.1 S. First St., Artesia, NM 88210  
District III  
1000 Rio Brazos Road, Aztec, NM 87410  
District IV  
1220 S. St. Francis Dr., Santa Fe, NM 87505

State of New Mexico  
Energy Minerals and Natural Resources  
Department  
Oil Conservation Division  
1220 South St. Francis Dr.  
Santa Fe, NM 87505

Form C-144  
Revised June 6, 2013

For temporary pits, below-grade tanks, and multi-well fluid management pits, submit to the appropriate NMOCD District Office.  
For permanent pits submit to the Santa Fe Environmental Bureau office and provide a copy to the appropriate NMOCD District Office.

Pit, Below-Grade Tank, or

12222

Proposed Alternative Method Permit or Closure Plan Application

Type of action: ☐ Below grade tank registration  
☐ Permit of a pit or proposed alternative method  
☒ Closure of a pit, below-grade tank, or proposed alternative method  
☐ Modification to an existing permit/or registration  
☐ Closure plan only submitted for an existing permitted or non-permitted pit, below-grade tank, or proposed alternative method

RCVD SEP 26 '14  
OIL CONS. DIV.  
DIST. 3

45-35030

**Instructions: Please submit one application (Form C-144) per individual pit, below-grade tank or alternative request**

Please be advised that approval of this request does not relieve the operator of liability should operations result in pollution of surface water, ground water or the environment. Nor does approval relieve the operator of its responsibility to comply with any other applicable governmental authority's rules, regulations or ordinances.

1.  
Operator: XTO Energy, Inc OGRID #: 5380  
Address: 382 Road 3100 Aztec, NM 87410  
Facility or well name: Ute Indians A 29  
API Number: 30-045-30030 OCD Permit Number: \_\_\_\_\_  
U/L or Qtr/Qtr + K Section 36 Township 31N Range 14W County: San Juan  
Center of Proposed Design: Latitude 36.9262 Longitude -108.29453 NAD: ☐ 1927 ☐ 1983  
Surface Owner: ☐ Federal ☐ State ☐ Private ☒ Tribal Trust or Indian Allotment

2.  
☐ **Pit:** Subsection F, G or J of 19.15.17.11 NMAC  
Temporary: ☐ Drilling ☐ Workover  
☐ Permanent ☐ Emergency ☐ Cavitation ☐ P&A ☐ Multi-Well Fluid Management Low Chloride Drilling Fluid ☐ yes ☐ no  
☐ Lined ☐ Unlined Liner type: Thickness \_\_\_\_\_ mil ☐ LLDPE ☐ HDPE ☐ PVC ☐ Other \_\_\_\_\_  
☐ String-Reinforced  
Liner Seams: ☐ Welded ☐ Factory ☐ Other \_\_\_\_\_ Volume: \_\_\_\_\_ bbl Dimensions: L \_\_\_\_\_ x W \_\_\_\_\_ x D \_\_\_\_\_

3.  
☒ **Below-grade tank:** Subsection I of 19.15.17.11 NMAC  
Volume: 120 bbl Type of fluid: Produced Water  
Tank Construction material: Steel  
☐ Secondary containment with leak detection ☐ Visible sidewalls, liner, 6-inch lift and automatic overflow shut-off  
☐ Visible sidewalls and liner ☐ Visible sidewalls only ☐ Other \_\_\_\_\_  
Liner type: Thickness \_\_\_\_\_ mil ☐ HDPE ☐ PVC ☐ Other \_\_\_\_\_

4.  
☐ **Alternative Method:**  
Submittal of an exception request is required. Exceptions must be submitted to the Santa Fe Environmental Bureau office for consideration of approval.

5.  
**Fencing:** Subsection D of 19.15.17.11 NMAC (Applies to permanent pits, temporary pits, and below-grade tanks)  
☐ Chain link, six feet in height, two strands of barbed wire at top (Required if located within 1000 feet of a permanent residence, school, hospital, institution or church)  
☐ Four foot height, four strands of barbed wire evenly spaced between one and four feet  
☐ Alternate. Please specify \_\_\_\_\_

6.

**Netting:** Subsection E of 19.15.17.11 NMAC (*Applies to permanent pits and permanent open top tanks*)

☒ Screen ☐ Netting ☐ Other \_\_\_\_\_

☐ Monthly inspections (If netting or screening is not physically feasible)

7.

**Signs:** Subsection C of 19.15.17.11 NMAC

☐ 12"x 24", 2" lettering, providing Operator's name, site location, and emergency telephone numbers

☐ Signed in compliance with 19.15.16.8 NMAC

8.

**Variances and Exceptions:**

Justifications and/or demonstrations of equivalency are required. Please refer to 19.15.17 NMAC for guidance.

***Please check a box if one or more of the following is requested, if not leave blank:***

☐ Variance(s): Requests must be submitted to the appropriate division district for consideration of approval.

☐ Exception(s): Requests must be submitted to the Santa Fe Environmental Bureau office for consideration of approval.

9.

**Siting Criteria (regarding permitting):** 19.15.17.10 NMAC

***Instructions: The applicant must demonstrate compliance for each siting criteria below in the application. Recommendations of acceptable source material are provided below. Siting criteria does not apply to drying pads or above-grade tanks.***

**General siting**

**Ground water is less than 25 feet below the bottom of a low chloride temporary pit or below-grade tank.**

- ☐ NM Office of the State Engineer - iWATERS database search; ☐ USGS; ☐ Data obtained from nearby wells

☐ Yes ☐ No  
☐ NA

**Ground water is less than 50 feet below the bottom of a Temporary pit, permanent pit, or Multi-Well Fluid Management pit.**

NM Office of the State Engineer - iWATERS database search; USGS; Data obtained from nearby wells

☐ Yes ☐ No  
☐ NA

Within incorporated municipal boundaries or within a defined municipal fresh water well field covered under a municipal ordinance adopted pursuant to NMSA 1978, Section 3-27-3, as amended. **(Does not apply to below grade tanks)**

- Written confirmation or verification from the municipality; Written approval obtained from the municipality

☐ Yes ☐ No

Within the area overlying a subsurface mine. **(Does not apply to below grade tanks)**

- Written confirmation or verification or map from the NM EMNRD-Mining and Mineral Division

☐ Yes ☐ No

Within an unstable area. **(Does not apply to below grade tanks)**

- Engineering measures incorporated into the design; NM Bureau of Geology & Mineral Resources; USGS; NM Geological Society; Topographic map

☐ Yes ☐ No

Within a 100-year floodplain. **(Does not apply to below grade tanks)**

- FEMA map

☐ Yes ☐ No

**Below Grade Tanks**

Within 100 feet of a continuously flowing watercourse, significant watercourse, lake bed, sinkhole, wetland or playa lake (measured from the ordinary high-water mark).

- Topographic map; Visual inspection (certification) of the proposed site

☐ Yes ☐ No

Within 200 horizontal feet of a spring or a fresh water well used for public or livestock consumption;

- NM Office of the State Engineer - iWATERS database search; Visual inspection (certification) of the proposed site

☐ Yes ☐ No

**Temporary Pit using Low Chloride Drilling Fluid** (maximum chloride content 15,000 mg/liter)

Within 100 feet of a continuously flowing watercourse, or any other significant watercourse or within 200 feet of any lakebed, sinkhole, or playa lake (measured from the ordinary high-water mark). (Applies to low chloride temporary pits.)

- Topographic map; Visual inspection (certification) of the proposed site

☐ Yes ☐ No

Within 300 feet from a occupied permanent residence, school, hospital, institution, or church in existence at the time of initial application.

- Visual inspection (certification) of the proposed site; Aerial photo; Satellite image

☐ Yes ☐ No

Within 200 horizontal feet of a spring or a private, domestic fresh water well used by less than five households for domestic or stock watering purposes, or 300feet of any other fresh water well or spring, in existence at the time of the initial application.

NM Office of the State Engineer - iWATERS database search; Visual inspection (certification) of the proposed site

☐ Yes ☐ No

Within 100 feet of a wetland.

- US Fish and Wildlife Wetland Identification map; Topographic map; Visual inspection (certification) of the proposed site

☐ Yes ☐ No

### **Temporary Pit Non-low chloride drilling fluid**

Within 300 feet of a continuously flowing watercourse, or any other significant watercourse, or within 200 feet of any lakebed, sinkhole, or playa lake (measured from the ordinary high-water mark).

- Topographic map; Visual inspection (certification) of the proposed site

☐ Yes ☐ No

Within 300 feet from a permanent residence, school, hospital, institution, or church in existence at the time of initial application.

- Visual inspection (certification) of the proposed site; Aerial photo; Satellite image

☐ Yes ☐ No

Within 500 horizontal feet of a spring or a private, domestic fresh water well used by less than five households for domestic or stock watering purposes, or 1000 feet of any other fresh water well or spring, in the existence at the time of the initial application;

- NM Office of the State Engineer - iWATERS database search; Visual inspection (certification) of the proposed site

☐ Yes ☐ No

Within 300 feet of a wetland.

- US Fish and Wildlife Wetland Identification map; Topographic map; Visual inspection (certification) of the proposed site

☐ Yes ☐ No

### **Permanent Pit or Multi-Well Fluid Management Pit**

Within 300 feet of a continuously flowing watercourse, or 200 feet of any other significant watercourse, or lakebed, sinkhole, or playa lake (measured from the ordinary high-water mark).

- Topographic map; Visual inspection (certification) of the proposed site

☐ Yes ☐ No

Within 1000 feet from a permanent residence, school, hospital, institution, or church in existence at the time of initial application.

- Visual inspection (certification) of the proposed site; Aerial photo; Satellite image

☐ Yes ☐ No

Within 500 horizontal feet of a spring or a fresh water well used for domestic or stock watering purposes, in existence at the time of initial application.

- NM Office of the State Engineer - iWATERS database search; Visual inspection (certification) of the proposed site

☐ Yes ☐ No

Within 500 feet of a wetland.

- US Fish and Wildlife Wetland Identification map; Topographic map; Visual inspection (certification) of the proposed site

☐ Yes ☐ No

10.

#### **Temporary Pits, Emergency Pits, and Below-grade Tanks Permit Application Attachment Checklist:** Subsection B of 19.15.17.9 NMAC

**Instructions:** Each of the following items must be attached to the application. Please indicate, by a check mark in the box, that the documents are attached.

- ☐ Hydrogeologic Report (Below-grade Tanks) - based upon the requirements of Paragraph (4) of Subsection B of 19.15.17.9 NMAC
- ☐ Hydrogeologic Data (Temporary and Emergency Pits) - based upon the requirements of Paragraph (2) of Subsection B of 19.15.17.9 NMAC
- ☐ Siting Criteria Compliance Demonstrations - based upon the appropriate requirements of 19.15.17.10 NMAC
- ☐ Design Plan - based upon the appropriate requirements of 19.15.17.11 NMAC
- ☐ Operating and Maintenance Plan - based upon the appropriate requirements of 19.15.17.12 NMAC
- ☐ Closure Plan (Please complete Boxes 14 through 18, if applicable) - based upon the appropriate requirements of Subsection C of 19.15.17.9 NMAC and 19.15.17.13 NMAC

☐ Previously Approved Design (attach copy of design) API Number: \_\_\_\_\_ or Permit Number: \_\_\_\_\_

11.

#### **Multi-Well Fluid Management Pit Checklist:** Subsection B of 19.15.17.9 NMAC

**Instructions:** Each of the following items must be attached to the application. Please indicate, by a check mark in the box, that the documents are attached.

- ☐ Design Plan - based upon the appropriate requirements of 19.15.17.11 NMAC
- ☐ Operating and Maintenance Plan - based upon the appropriate requirements of 19.15.17.12 NMAC
- ☐ A List of wells with approved application for permit to drill associated with the pit.
- ☐ Closure Plan (Please complete Boxes 14 through 18, if applicable) - based upon the appropriate requirements of Subsection C of 19.15.17.9 NMAC and 19.15.17.13 NMAC

- ☐ Hydrogeologic Data - based upon the requirements of Paragraph (4) of Subsection B of 19.15.17.9 NMAC
- ☐ Siting Criteria Compliance Demonstrations - based upon the appropriate requirements of 19.15.17.10 NMAC

☐ Previously Approved Design (attach copy of design) API Number: \_\_\_\_\_ or Permit Number: \_\_\_\_\_

12.

**Permanent Pits Permit Application Checklist:** Subsection B of 19.15.17.9 NMAC

**Instructions:** Each of the following items must be attached to the application. Please indicate, by a check mark in the box, that the documents are attached.

- ☐ Hydrogeologic Report - based upon the requirements of Paragraph (1) of Subsection B of 19.15.17.9 NMAC  
☐ Siting Criteria Compliance Demonstrations - based upon the appropriate requirements of 19.15.17.10 NMAC  
☐ Climatological Factors Assessment  
☐ Certified Engineering Design Plans - based upon the appropriate requirements of 19.15.17.11 NMAC  
☐ Dike Protection and Structural Integrity Design - based upon the appropriate requirements of 19.15.17.11 NMAC  
☐ Leak Detection Design - based upon the appropriate requirements of 19.15.17.11 NMAC  
☐ Liner Specifications and Compatibility Assessment - based upon the appropriate requirements of 19.15.17.11 NMAC  
☐ Quality Control/Quality Assurance Construction and Installation Plan  
☐ Operating and Maintenance Plan - based upon the appropriate requirements of 19.15.17.12 NMAC  
☐ Freeboard and Overtopping Prevention Plan - based upon the appropriate requirements of 19.15.17.11 NMAC  
☐ Nuisance or Hazardous Odors, including H<sub>2</sub>S, Prevention Plan  
☐ Emergency Response Plan  
☐ Oil Field Waste Stream Characterization  
☐ Monitoring and Inspection Plan  
☐ Erosion Control Plan  
☐ Closure Plan - based upon the appropriate requirements of Subsection C of 19.15.17.9 NMAC and 19.15.17.13 NMAC

13.

**Proposed Closure:** 19.15.17.13 NMAC

**Instructions:** Please complete the applicable boxes, Boxes 14 through 18, in regards to the proposed closure plan.

- Type: ☐ Drilling ☐ Workover ☐ Emergency ☐ Cavitation ☐ P&A ☐ Permanent Pit ☐ Below-grade Tank ☐ Multi-well Fluid Management Pit  
☐ Alternative
- Proposed Closure Method: ☐ Waste Excavation and Removal  
☐ Waste Removal (Closed-loop systems only)  
☐ On-site Closure Method (Only for temporary pits and closed-loop systems)  
     ☐ In-place Burial ☐ On-site Trench Burial  
☐ Alternative Closure Method

14.

**Waste Excavation and Removal Closure Plan Checklist:** (19.15.17.13 NMAC) **Instructions:** Each of the following items must be attached to the closure plan. Please indicate, by a check mark in the box, that the documents are attached.

- ☐ Protocols and Procedures - based upon the appropriate requirements of 19.15.17.13 NMAC  
☐ Confirmation Sampling Plan (if applicable) - based upon the appropriate requirements of Subsection C of 19.15.17.13 NMAC  
☐ Disposal Facility Name and Permit Number (for liquids, drilling fluids and drill cuttings)  
☐ Soil Backfill and Cover Design Specifications - based upon the appropriate requirements of Subsection H of 19.15.17.13 NMAC  
☐ Re-vegetation Plan - based upon the appropriate requirements of Subsection H of 19.15.17.13 NMAC  
☐ Site Reclamation Plan - based upon the appropriate requirements of Subsection H of 19.15.17.13 NMAC

15.

**Siting Criteria (regarding on-site closure methods only):** 19.15.17.10 NMAC

**Instructions:** Each siting criteria requires a demonstration of compliance in the closure plan. Recommendations of acceptable source material are provided below. Requests regarding changes to certain siting criteria require justifications and/or demonstrations of equivalency. Please refer to 19.15.17.10 NMAC for guidance.

Ground water is less than 25 feet below the bottom of the buried waste. - NM Office of the State Engineer - iWATERS database search; USGS; Data obtained from nearby wells	<input type="checkbox"/> Yes <input type="checkbox"/> No <input type="checkbox"/> NA
Ground water is between 25-50 feet below the bottom of the buried waste - NM Office of the State Engineer - iWATERS database search; USGS; Data obtained from nearby wells	<input type="checkbox"/> Yes <input type="checkbox"/> No <input type="checkbox"/> NA
Ground water is more than 100 feet below the bottom of the buried waste. - NM Office of the State Engineer - iWATERS database search; USGS; Data obtained from nearby wells	<input type="checkbox"/> Yes <input type="checkbox"/> No <input type="checkbox"/> NA
Within 100 feet of a continuously flowing watercourse, or 200 feet of any other significant watercourse, lakebed, sinkhole, or playa lake (measured from the ordinary high-water mark). - Topographic map; Visual inspection (certification) of the proposed site	<input type="checkbox"/> Yes <input type="checkbox"/> No
Within 300 feet from a permanent residence, school, hospital, institution, or church in existence at the time of initial application. - Visual inspection (certification) of the proposed site; Aerial photo; Satellite image	<input type="checkbox"/> Yes <input type="checkbox"/> No
Within 300 horizontal feet of a private, domestic fresh water well or spring used for domestic or stock watering purposes, in existence at the time of initial application. - NM Office of the State Engineer - iWATERS database; Visual inspection (certification) of the proposed site	<input type="checkbox"/> Yes <input type="checkbox"/> No
Written confirmation or verification from the municipality; Written approval obtained from the municipality	<input type="checkbox"/> Yes <input type="checkbox"/> No
Within 300 feet of a wetland. US Fish and Wildlife Wetland Identification map; Topographic map; Visual inspection (certification) of the proposed site	<input type="checkbox"/> Yes <input type="checkbox"/> No
Within incorporated municipal boundaries or within a defined municipal fresh water well field covered under a municipal ordinance	

adopted pursuant to NMSA 1978, Section 3-27-3, as amended.

- Written confirmation or verification from the municipality; Written approval obtained from the municipality

☐ Yes ☐ No

Within the area overlying a subsurface mine.

- Written confirmation or verification or map from the NM EMNRD-Mining and Mineral Division

☐ Yes ☐ No

Within an unstable area.

- Engineering measures incorporated into the design; NM Bureau of Geology & Mineral Resources; USGS; NM Geological Society; Topographic map

☐ Yes ☐ No

Within a 100-year floodplain.

- FEMA map

☐ Yes ☐ No

16.

**On-Site Closure Plan Checklist:** (19.15.17.13 NMAC) *Instructions: Each of the following items must be attached to the closure plan. Please indicate, by a check mark in the box, that the documents are attached.*

- ☐ Siting Criteria Compliance Demonstrations - based upon the appropriate requirements of 19.15.17.10 NMAC
- ☐ Proof of Surface Owner Notice - based upon the appropriate requirements of Subsection E of 19.15.17.13 NMAC
- ☐ Construction/Design Plan of Burial Trench (if applicable) based upon the appropriate requirements of Subsection K of 19.15.17.11 NMAC
- ☐ Construction/Design Plan of Temporary Pit (for in-place burial of a drying pad) - based upon the appropriate requirements of 19.15.17.11 NMAC
- ☐ Protocols and Procedures - based upon the appropriate requirements of 19.15.17.13 NMAC
- ☐ Confirmation Sampling Plan (if applicable) - based upon the appropriate requirements of 19.15.17.13 NMAC
- ☐ Waste Material Sampling Plan - based upon the appropriate requirements of 19.15.17.13 NMAC
- ☐ Disposal Facility Name and Permit Number (for liquids, drilling fluids and drill cuttings or in case on-site closure standards cannot be achieved)
- ☐ Soil Cover Design - based upon the appropriate requirements of Subsection H of 19.15.17.13 NMAC
- ☐ Re-vegetation Plan - based upon the appropriate requirements of Subsection H of 19.15.17.13 NMAC
- ☐ Site Reclamation Plan - based upon the appropriate requirements of Subsection H of 19.15.17.13 NMAC

17.

**Operator Application Certification:**

I hereby certify that the information submitted with this application is true, accurate and complete to the best of my knowledge and belief.

Name (Print): \_\_\_\_\_ Title: \_\_\_\_\_

Signature: \_\_\_\_\_ Date: \_\_\_\_\_

e-mail address: \_\_\_\_\_ Telephone: \_\_\_\_\_

18.

**OCD Approval:** ☐ Permit Application (including closure plan) ☒ Closure Plan (only) ☐ OCD Conditions (see attachment)

OCD Representative Signature:  Approval Date: 10/22/14

Title: Environmental Spec. OCD Permit Number: \_\_\_\_\_

19.

**Closure Report (required within 60 days of closure completion):** 19.15.17.13 NMAC

*Instructions: Operators are required to obtain an approved closure plan prior to implementing any closure activities and submitting the closure report. The closure report is required to be submitted to the division within 60 days of the completion of the closure activities. Please do not complete this section of the form until an approved closure plan has been obtained and the closure activities have been completed.*

☒ Closure Completion Date: AUGUST 7, 2014

20.

**Closure Method:**

- ☒ Waste Excavation and Removal ☐ On-Site Closure Method ☐ Alternative Closure Method ☐ Waste Removal (Closed-loop systems only)
- ☐ If different from approved plan, please explain.

21.

**Closure Report Attachment Checklist:** *Instructions: Each of the following items must be attached to the closure report. Please indicate, by a check mark in the box, that the documents are attached.*

- ☒ Proof of Closure Notice (surface owner and division)
- ☐ Proof of Deed Notice (required for on-site closure for private land only)
- ☐ Plot Plan (for on-site closures and temporary pits)
- ☒ Confirmation Sampling Analytical Results (if applicable)
- ☐ Waste Material Sampling Analytical Results (required for on-site closure)
- ☒ Disposal Facility Name and Permit Number
- ☒ Soil Backfilling and Cover Installation
- ☒ Re-vegetation Application Rates and Seeding Technique
- ☒ Site Reclamation (Photo Documentation)

On-site Closure Location: Latitude \_\_\_\_\_ Longitude \_\_\_\_\_ NAD: ☐ 1927 ☐ 1983

**Operator Closure Certification:**

I hereby certify that the information and attachments submitted with this closure report is true, accurate and complete to the best of my knowledge and belief. I also certify that the closure complies with all applicable closure requirements and conditions specified in the approved closure plan.

Name (Print): Logan Hixon \_\_\_\_\_ Title: EHS Coordinator \_\_\_\_\_

Signature: Logan Hixon \_\_\_\_\_

Date: September 24, 2014

e-mail address: Logan\_Hixon@xtoenergy.com Telephone: (505) 333-3100 \_\_\_\_\_

District I  
1625 N. French Dr., Hobbs, NM 88240  
District II  
811 S. First St., Artesia, NM 88210  
District III  
1000 Rio Brazos Road, Aztec, NM 87410  
District IV  
1220 S. St. Francis Dr., Santa Fe, NM 87505

State of New Mexico  
Energy Minerals and Natural Resources

Oil Conservation Division  
1220 South St. Francis Dr.  
Santa Fe, NM 87505

Form C-141  
Revised August 8, 2011

Submit 1 Copy to appropriate District Office in  
accordance with 19.15.29 NMAC.

**Release Notification and Corrective Action**

**OPERATOR**

☒ Initial Report ☒ Final Report

Name of Company: XTO Energy, Inc.	Contact: Logan Hixon	
Address: 382 Road 3100, Aztec, New Mexico 87410	Telephone No.: (505) 333-3683	
Facility Name: Ute Indians A 29	Facility Type: Gas Well	
Surface Owner: Tribal Trust or Indian Allotment	Mineral Owner	API No. 30-045-30030

**LOCATION OF RELEASE**

Unit Letter	Section	Township	Range	Feet from the	North/South Line	Feet from the	East/West Line	County
J	3	31 N	14W	1510	FSL	2100	FWL	San Juan

Latitude: N36\*.9262 Longitude: W-107\*.29453

**NATURE OF RELEASE**

Type of Release: Produced Water	Volume of Release: Unknown	Volume Recovered: Unknown
Source of Release: BGT	Date and Hour of Occurrence: Unknown	Date and Hour of Discovery: June 30, 2014
Was Immediate Notice Given? <input type="checkbox"/> Yes <input type="checkbox"/> No <input checked="" type="checkbox"/> Not Required	If YES, To Whom? N/A	
By Whom?	Date and Hour	
Was a Watercourse Reached? <input type="checkbox"/> Yes <input checked="" type="checkbox"/> No	If YES, Volume Impacting the Watercourse.	

If a Watercourse was Impacted, Describe Fully.\*

Describe Cause of Problem and Remedial Action Taken.\*

The below grade tank was taken out of service at the Ute Indians A 29 well site due to the P&A'ing of this well site. A composite sample was collected beneath the location of the on-site BGT, and submitted for laboratory analysis for TPH via USEPA Method 418.1 and 8015, Benzene and BTEX via USEPA Method 8021, and for total chlorides. The sample returned results below the 'Pit Rule' spill confirmation standards for Benzene, Total BTEX, but above the 'pit rule' standards for TPH and total chlorides, confirming that a release has occurred at this location. The site was then ranked according to the NMOCD Guidelines for the Remediation of Leaks, Spills and Releases. The site was ranked a 0 due to an estimated depth to groundwater of greater than 100 feet, distance to water well greater than 1000 feet, and distance to surface water greater than 1000 feet. This set the closure standard to 5000 ppm TPH, 10 ppm benzene, and 50 ppm total BTEX.

Describe Area Affected and Cleanup Action Taken.\*

Based on TPH results of 643 ppm via USEPA Method 418.1 and chloride results of 580 ppm, a release has been confirmed at this location.

I hereby certify that the information given above is true and complete to the best of my knowledge and understand that pursuant to NMOCD rules and regulations all operators are required to report and/or file certain release notifications and perform corrective actions for releases which may endanger public health or the environment. The acceptance of a C-141 report by the NMOCD marked as "Final Report" does not relieve the operator of liability should their operations have failed to adequately investigate and remediate contamination that pose a threat to ground water, surface water, human health or the environment. In addition, NMOCD acceptance of a C-141 report does not relieve the operator of responsibility for compliance with any other federal, state, or local laws and/or regulations.

Signature: <i>Logan Hixon</i>	<b>OIL CONSERVATION DIVISION</b>		
Printed Name: Logan Hixon	Approved by Environmental Specialist:		
Title: EHS Coordinator	Approval Date:	Expiration Date:	
E-mail Address: Logan_Hixon@xtoenergy.com	Conditions of Approval:		Attached <input type="checkbox"/>
Date: <i>September 24, 2014</i> Phone: 505-333-3683			

\* Attach Additional Sheets If Necessary

# **XTO Energy Inc. San Juan Basin Below Grade Tank Closure Report**

**Lease Name: Ute Indians A 29**

**API No.: 30-045-30030**

**Description: Unit J, Section 3, Township 31N, Range 14W, San Juan County**

In accordance with Rule 19.15.17.13 NMAC the following information describes the closure requirements of below-grade tanks on XTO Energy Inc. (XTO) locations. This is XTO's standard procedure for all below-grade tanks. A separate plan will be submitted for any below-grade tank which does not conform to this plan.

## **General Plan**

1. XTO will close below-grade tanks within the time periods provided in 19.15.17.13 NMAC, or by an earlier date that the division requires because of imminent danger to fresh water, public health or the environment.

**Closure Date is August 7, 2014**

2. XTO will close a below-grade tank that does not meet the requirements of Paragraphs (1) through (4) of Subsection I of 19.15.17.11 NMAC or is not included in Paragraph (5) of Subsection I of 19.15.17.11 NMAC within five years after June 16, 2008, if not retrofitted to comply with Paragraphs (1) through (4) of Subsection I of 19.15.17.11 NMAC.

**Closure Date is August 7, 2014**

3. XTO will close a permitted below-grade tank within 60 days of cessation of the below-grade tank's operation or as required by the transitional provisions of Subsection B of 19.15.17.17 NMAC in accordance with a closure plan that the appropriate division district office approves. The closure report will be filed on form C-144.

**Required C-144 Form is attached to this document.**

4. XTO will remove liquids and sludge from below-grade tanks prior to implementing a closure method and will dispose of the liquids and sludge in a division-approved facility. Approved facilities and waste streams include:

Envirotech Permit No. NM01-0011 and IEI Permit No. NM 01-0010B

Soil contaminated by exempt petroleum hydrocarbons

Produced sand, pit sludge and contaminated bottoms from storage of exempt wastes

Basin Disposal Permit No. NM01-005

Produced water

**All liquids and sludge were removed from the tank prior to closure activities.**

5. XTO will remove the below-grade tank and dispose of it in a division approved facility or recycle, reuse, or reclaim it in a manner that the appropriate division district office approves.

**XTO has removed the below grade tank, and will dispose of it at a division approved facility, or recycle, reclaim or reuse it in a manner that is approved by the division.**



6. XTO will remove any on-site equipment associated with a below-grade tank unless the equipment is required for some other purpose.

**All equipment has been removed due to the P&A'ing of the Ute Indians A 29 site.**

7. XTO will test the soils beneath the below-grade tank to determine whether a release has occurred. At a minimum 5 point composite sample will be collected along with individual grab samples from any area that is wet, discolored or showing other evidence of a release. Samples will be analyzed for BTEX, TPH and chlorides to demonstrate that the benzene concentration, as determined by EPA SW-846 methods 8021B or 8260B or EPA method that the division approves, does not exceed 0.2 mg/kg; total BTEX concentration, as determined by EPA SW-846 methods 8021B or 8260B or other EPA method that the division approves, does not exceed 50 mg/kg; the TPH concentration, as determined by EPA method 418.1 or other EPA method that the division approves, does not exceed 100mg/kg; and the chloride concentration, as determined by EPA method 300.1 or other EPA method that the division approves, does not exceed 250 mg/kg, or the background concentration, whichever is greater. XTO will notify the division of its results on form C-141.

**A five point composite sample was taken of the pit using sampling tools and all samples tested per Subsection B of 19.15.17.1 3(B)( 1 )(b). (Sample results attached).**

Components	Test Method	Limit (mg/Kg)	Results
Benzene	EPA SW-846 8021B or 8260B	0.2	< 0.0030 mg/kg
BTEX	EPA SW-846 8021B or 8260B	50	< 0.0450mg/kg
TPH	EPA SW-846 418.1	100	643 mg/kg
Chlorides	EPA 300.1	250 or background	580 mg/kg
TPH	EPA SW-846 8015M	100	19 mg/kg

8. If XTO or the division determines that a release has occurred, XTO will comply with 19.15.3.116 NMAC and 19.15.1.19NMAC as appropriate.

**Due to TPH results of 643 PPM via USEPA 418.1, and chloride result of 580 PPM, a release has been confirmed for this location. A C-141 Release Notification form will be sent outlining any remediation activities taken regarding this release.**

9. If the sampling program demonstrates that a release has not occurred or that any release does not exceed the concentrations specified in Paragraph (4) of Subsection E of 19.15.17.13 NMAC, XTO will backfill the excavation with compacted, non-waste containing, earthen material; construct a division prescribed soil cover; recontour and re-vegetate the site.

**The pit cellar was backfilled using compacted, non-waste containing earthen material, with a division prescribed soil cover.**

10. Notice of Closure operations will be given to the Aztec Division District III office between 72 hours and one week prior to the start of closure activities via email or verbally.

The notification will include the following:

- i. Operator's name
- ii. Well Name and API Number
- iii. Location by Unit Letter, Section, Township, and Range

**Notification was provided to Mr. Cory Smith with the Aztec office of the OCD via email on June 26, 2014; see attached email printout.**

The surface owner shall be notified of XTO's proposal to close the BGT as per the approved closure plan using certified mail, return receipt requested.

**The surface owner was notified on June 26, 2014 via email. Email has been approved as a means of surface owner notification to the BLM by Brandon Powell, NMOCD Aztec Office.**

11. Re-contouring of location will match fit, shape, line, form and texture of the surrounding area. Re-shaping will include drainage control, prevent ponding, and prevent erosion. Natural drainages will be unimpeded and water bars and/or silt traps will be placed in areas where needed to prevent erosion on a large scale. Final re-contour shall have a uniform appearance with smooth surface, fitting the natural landscape.  
**The location will be recontoured to match the above specifications.**
12. A minimum of 4 feet of cover shall be achieved and the cover shall include 1 foot of suitable material to establish vegetation at the site, or the background thickness of topsoil, whichever is greater.  
**The site will be backfilled to match these specifications.**
13. XTO will seed the disturbed areas the first growing season after the operator closes the pit. Seeding will be accomplished via drilling on the contour whenever practical or by other division-approved methods. BLM or Forest Service stipulated seed mixes will be used on federal lands. Vegetative cover will equal 70% of the native perennial vegetative cover (un-impacted) consisting of at least three native plant species, including at least one grass, but not including noxious weeds, and maintain that cover through two successive growing seasons. Repeat seeding or planting will be continued until successful vegetative growth occurs.  
**Site will be reclaimed pursuant to BLM MOU.**
14. All closure activities will include proper documentation and be available for review upon request and will be submitted in closure report form to OCD within 60 days of closure of the below-grade tank. Closure report will be filed on form C-144 and incorporate the following:
  - i. Proof of closure notice to division and surface owner; **attached**
  - ii. Details on capping and covering, where applicable; **per OCD Specifications**
  - iii. Inspection reports; **attached**
  - iv. Confirmation sampling analytical results; **attached**
  - v. Disposal facility name(s) and permit number(s); **see above**
  - vi. Soil backfilling and cover installation; **per OCD Specifications**
  - vii. Re-vegetation application rates and seeding techniques, (or approved alternative to re-vegetation requirements if applicable); **per BLM MOU**
  - viii. Photo documentation of the site reclamation. **Attached**
15. The closure date is past the one week notification requirement date due to unforeseen delays in the P&A operations at this well site.



12065 Lebanon Rd.  
Mt. Juliet, TN 37122  
(615) 758-5858  
1-800-767-5859  
Fax (615) 758-5859  
Tax I.D. 62-0814289  
Est. 1970

Logan Hixon  
XTO Energy - San Juan Division  
382 County Road 3100  
Aztec, NM 87410

### Report Summary

Monday June 30, 2014

Report Number: L707097

Samples Received: 06/27/14

Client Project:

Description: Lite Indians A 29

The analytical results in this report are based upon information supplied by you, the client, and are for your exclusive use. If you have any questions regarding this data package, please do not hesitate to call.

Entire Report Reviewed By:

Daphne Richards , ESC Representative

### Laboratory Certification Numbers

A2LA - 1461-01, AIHA - 100789, AL - 40660, CA - 01157CA, CT - PH-0197,  
FL - E87487, GA - 923, IN - C-TN-01, KY - 90010, KYUST - 0016,  
NC - ENV375/DW21704/BIO041, ND - R-140, NJ - TN002, NJ NELAP - TN002,  
SC - 84004, TN - 2006, VA - 460132, WV - 233, AZ - 0612,  
MN - 047-999-395, NY - 11742, WI - 998093910, NV - TN000032011-1,  
TX - T104704245-11-3, OK - 9915, PA - 68-02979, IA Lab #364, EPA - TN002

Accreditation is only applicable to the test methods specified on each scope of accreditation held by ESC Lab Sciences.

This report may not be reproduced, except in full, without written approval from ESC Lab Sciences. Where applicable, sampling conducted by ESC is performed per guidance provided in laboratory standard operating procedures: 060302, 060303, and 060304.



YOUR LAB OF CHOICE

12065 Lebanon Rd.  
Mt. Juliet, TN 37122  
(615) 758-5858  
1-800-767-5859  
Fax (615) 758-5859

Tax I.D. 62-0814289

Est. 1970

REPORT OF ANALYSIS

June 30, 2014

Logan Hixon  
XTO Energy - San Juan Division  
382 County Road 3100  
Aztec, NM 87410

Date Received : June 27, 2014  
Description : Lite Indians A 29

Sample ID : FARLH-062614-1140

Collected By : JH  
Collection Date : 06/26/14 11:40

ESC Sample # : L707097-01

Site ID :

Project # :

Parameter	Dry Result	Det. Limit	Units	Method	Date	Dil.
Chloride	580	12.	mg/kg	9056	06/28/14	1
Total Solids	82.9		%	2540 G-2011	06/29/14	1
Benzene	BDL	0.0030	mg/kg	8021/8015	06/28/14	5
Toluene	BDL	0.030	mg/kg	8021/8015	06/28/14	5
Ethylbenzene	BDL	0.0030	mg/kg	8021/8015	06/28/14	5
Total Xylene	BDL	0.0090	mg/kg	8021/8015	06/28/14	5
TPH (GC/FID) Low Fraction	BDL	0.60	mg/kg	GRO	06/28/14	5
Surrogate Recovery-%						
a,a,a-Trifluorotoluene (FID)	96.4		% Rec.	8021/8015	06/28/14	5
a,a,a-Trifluorotoluene (PID)	101.		% Rec.	8021/8015	06/28/14	5
TPH (GC/FID) High Fraction	19.	4.8	mg/kg	3546/DRO	06/28/14	1
Surrogate recovery(%)						
o-Terphenyl	71.1		% Rec.	3546/DRO	06/28/14	1

Results listed are dry weight basis.

BDL - Below Detection Limit

Det. Limit - Practical Quantitation Limit (PQL)

Note:

This report shall not be reproduced, except in full, without the written approval from ESC.

The reported analytical results relate only to the sample submitted

Reported: 06/30/14 14:24 Printed: 06/30/14 14:25

Summary of Remarks For Samples Printed  
06/30/14 at 14:25:11

TSR Signing Reports: 288  
R2 - Rush: Next Day

Domestic Water Well Sampling-see L609759 Lobato for tests EDD's on ALL projects email James,  
Kurt and Logan all reports

Sample: L707097-01 Account: XTORNM Received: 06/27/14 09:00 Due Date: 06/30/14 00:00 RPT Date: 06/30/14 14:24



YOUR LAB OF CHOICE

XTO Energy - San Juan Division  
Logan Hixon  
382 County Road 3100

Aztec, NM 87410

Quality Assurance Report  
Level II

L707097

12065 Lebanon Rd.  
Mt. Juliet, TN 37122  
(615) 758-5858  
1-800-767-5859  
Fax (615) 758-5859

Tax I.D. 62-0814289

Est. 1970

June 30, 2014

Analyte	Result	Laboratory Blank Units % Rec	Limit	Batch	Date Analyzed
TPH (GC/FID) High Fraction o-Terphenyl	< 4	mg/kg % Rec. 71.70	50-150	WG729012 WG729012	06/27/14 13:39 06/27/14 13:39
Benzene	< .0005	mg/kg		WG729053	06/27/14 22:48
Ethylbenzene	< .0005	mg/kg		WG729053	06/27/14 22:48
Toluene	< .005	mg/kg		WG729053	06/27/14 22:48
TPH (GC/FID) Low Fraction	< .1	mg/kg		WG729053	06/27/14 22:48
Total Xylene	< .0015	mg/kg		WG729053	06/27/14 22:48
a,a,a-Trifluorotoluene (FID)		% Rec. 97.40	59-128	WG729053	06/27/14 22:48
a,a,a-Trifluorotoluene (PID)		% Rec. 102.0	54-144	WG729053	06/27/14 22:48
Total Solids	< .1	%		WG729156	06/29/14 08:45
Chloride	< 10	mg/kg		WG729099	06/28/14 12:49

Analyte	Units	Result	Duplicate Duplicate	RPD	Limit	Ref Samp	Batch
Total Solids	%	89.1	88.7	0.439	5	L707108-02	WG729156
Chloride	mg/kg	12000	11900	2.00	20	L707072-03	WG729099
Chloride	mg/kg	4900	4890	0.0	20	L707072-07	WG729099

Analyte	Units	Laboratory Control Sample Known Val Result	% Rec	Limit	Batch
TPH (GC/FID) High Fraction o-Terphenyl	mg/kg	60	42.0 68.70	70.1 50-150	WG729012 WG729012
Benzene	mg/kg	.05	0.0451	90.2	WG729053
Ethylbenzene	mg/kg	.05	0.0465	92.9	WG729053
Toluene	mg/kg	.05	0.0461	92.2	WG729053
Total Xylene	mg/kg	.15	0.141	94.3	WG729053
a,a,a-Trifluorotoluene (FID)			97.40	59-128	WG729053
a,a,a-Trifluorotoluene (PID)			101.0	54-144	WG729053
TPH (GC/FID) Low Fraction	mg/kg	5.5	5.78	105.	WG729053
a,a,a-Trifluorotoluene (FID)			98.40	59-128	WG729053
a,a,a-Trifluorotoluene (PID)			111.0	54-144	WG729053
Total Solids	%	50	50.1	100.	WG729156
Chloride	mg/kg	200	220.	110.	WG729099

Analyte	Units	Laboratory Control Sample Duplicate Result Ref %Rec	Limit	RPD	Limit	Batch
TPH (GC/FID) High Fraction o-Terphenyl	mg/kg	44.1 42.0 74.0 70.80	50-150 50-150	4.86	20	WG729012 WG729012
Benzene	mg/kg	0.0496 0.0451 99.0	70-130	9.47	20	WG729053
Ethylbenzene	mg/kg	0.0503 0.0465 101.	70-130	8.00	20	WG729053

\* Performance of this Analyte is outside of established criteria.  
For additional information, please see Attachment A 'List of Analytes with QC Qualifiers.'



**YOUR LAB OF CHOICE**

XTO Energy - San Juan Division  
Logan Hixon  
382 County Road 3100  
Aztec, NM 87410

Quality Assurance Report  
Level II

L707097

12065 Lebanon Rd.  
Mt. Juliet, TN 37122  
(615) 758-5858  
1-800-767-5859  
Fax (615) 758-5859

Tax I.D. 62-0814289

Est. 1970

June 30, 2014

Analyte	Units	Laboratory Control Sample Duplicate			Limit	RPD	Limit	Batch
		Result	Ref	%Rec				
Toluene	mg/kg	0.0499	0.0461	100.	70-130	7.83	20	WG729053
Total Xylene	mg/kg	0.153	0.141	102.	70-130	7.81	20	WG729053
a,a,a-Trifluorotoluene(FID)				97.30	59-128			WG729053
a,a,a-Trifluorotoluene(PID)				101.0	54-144			WG729053
TPH (GC/FID) Low Fraction	mg/kg	5.75	5.78	105.	63.5-137	0.450	20	WG729053
a,a,a-Trifluorotoluene(FID)				99.00	59-128			WG729053
a,a,a-Trifluorotoluene(PID)				111.0	54-144			WG729053
Chloride	mg/kg	213.	220.	107.	80-120	3.00	20	WG729099

Analyte	Units	MS Res	Matrix Spike			Limit	Ref Samp	Batch
			Ref Res	TV	% Rec			
Benzene	mg/kg	0.191	0.000311	.05	76.0	49.7-127	L706979-01	WG729053
Ethylbenzene	mg/kg	0.185	0.000388	.05	74.0	40.8-141	L706979-01	WG729053
Toluene	mg/kg	0.194	0.000938	.05	77.0	49.8-132	L706979-01	WG729053
Total Xylene	mg/kg	0.566	0.00171	.15	75.0	41.2-140	L706979-01	WG729053
a,a,a-Trifluorotoluene(FID)					96.10	59-128		WG729053
a,a,a-Trifluorotoluene(PID)					99.80	54-144		WG729053
TPH (GC/FID) Low Fraction	mg/kg	19.9	0.101	5.5	72.0	28.5-138	L706979-01	WG729053
a,a,a-Trifluorotoluene(FID)					96.40	59-128		WG729053
a,a,a-Trifluorotoluene(PID)					107.0	54-144		WG729053
TPH (GC/FID) High Fraction	mg/kg	32.5	2.51	60	50.0	50-150	L706428-01	WG729012
o-Terphenyl					65.20	50-150		WG729012

Analyte	Units	MSD	Matrix Spike Duplicate			Limit	RPD	Limit	Ref Samp	Batch
			Ref	%Rec						
Benzene	mg/kg	0.213	0.191	85.2		49.7-127	10.9	23.5	L706979-01	WG729053
Ethylbenzene	mg/kg	0.200	0.185	79.9		40.8-141	7.67	23.8	L706979-01	WG729053
Toluene	mg/kg	0.210	0.194	83.5		49.8-132	7.49	23.5	L706979-01	WG729053
Total Xylene	mg/kg	0.608	0.566	80.9		41.2-140	7.15	23.7	L706979-01	WG729053
a,a,a-Trifluorotoluene(FID)				96.00		59-128				WG729053
a,a,a-Trifluorotoluene(PID)				99.60		54-144				WG729053
TPH (GC/FID) Low Fraction	mg/kg	20.7	19.9	75.0		28.5-138	4.26	23.6	L706979-01	WG729053
a,a,a-Trifluorotoluene(FID)				97.10		59-128				WG729053
a,a,a-Trifluorotoluene(PID)				107.0		54-144				WG729053
TPH (GC/FID) High Fraction	mg/kg	36.5	32.5	56.7		50-150	11.7	20	L706428-01	WG729012
o-Terphenyl				67.70		50-150				WG729012

Batch number /Run number / Sample number cross reference

WG729012: R2951045: L707097-01  
WG729053: R2951405: L707097-01  
WG729156: R2951973: L707097-01  
WG729099: R2952792: L707097-01

\* \* Calculations are performed prior to rounding of reported values.

\* Performance of this Analyte is outside of established criteria.

For additional information, please see Attachment A 'List of Analytes with QC Qualifiers.'



**YOUR LAB OF CHOICE**

XTO Energy - San Juan Division  
Logan Hixon  
382 County Road 3100

Aztec, NM 87410

Quality Assurance Report  
Level II

L707097

12065 Lebanon Rd.  
Mt. Juliet, TN 37122  
(615) 758-5858  
1-800-767-5859  
Fax (615) 758-5859

Tax I.D. 62-0814289

Est. 1970

June 30, 2014

The data package includes a summary of the analytic results of the quality control samples required by the SW-846 or CWA methods. The quality control samples include a method blank, a laboratory control sample, and the matrix spike/matrix spike duplicate analysis. If a target parameter is outside the method limits, every sample that is effected is flagged with the appropriate qualifier in Appendix B of the analytic report.

Method Blank - an aliquot of reagent water carried through the entire analytic process. The method blank results indicate if any possible contamination exposure during the sample handling, digestion or extraction process, and analysis. Concentrations of target analytes above the reporting limit in the method blank are qualified with the "B" qualifier.

Laboratory Control Sample - is a sample of known concentration that is carried through the digestion/extraction and analysis process. The percent recovery, expressed as a percentage of the theoretical concentration, has statistical control limits indicating that the analytic process is "in control". If a target analyte is outside the control limits for the laboratory control sample or any other control sample, the parameter is flagged with a "J4" qualifier for all effected samples.

Matrix Spike and Matrix Spike Duplicate - is two aliquots of an environmental sample that is spiked with known concentrations of target analytes. The percent recovery of the target analytes also has statistical control limits. If any recoveries that are outside the method control limits, the sample that was selected for matrix spike/matrix spike duplicate analysis is flagged with either a "J5" or a "J6". The relative percent difference (%RPD) between the matrix spike and the matrix spike duplicate recoveries is all calculated. If the RPD is above the method limit, the effected samples are flagged with a "J3" qualifier.



\* Sample ID will be the office and sampler-date-military time FARJM-MMDDYY-1200



## Analytical Report

### Report Summary

Client: XTO Energy Inc.

Chain Of Custody Number: 0073

Samples Received: 6/26/2014 12:52:00PM

Job Number: 98031-0528

Work Order: P406109

Project Name/Location: Ute Indians A 29

Entire Report Reviewed By:

A handwritten signature in black ink, appearing to read "Tim Cain".

Date: 6/30/14

Tim Cain, Laboratory Manager

The results in this report apply to the samples submitted to Envirotech's Analytical Laboratory and were analyzed in accordance with the chain of custody document supplied by you, the client, and as such are for your exclusive use only. The results in this report are based on the sample as received unless otherwise noted. Partial or incomplete reproduction of this report is prohibited, unless approved by Envirotech, Inc. If you have any questions regarding this analytical report, please don't hesitate to contact Envirotech's Laboratory Staff.



XTO Energy Inc.  
382 CR 3100  
Aztec NM, 87410

Project Name: Ute Indians A 29  
Project Number: 98031-0528  
Project Manager: James McDaniel

**Reported:**  
30-Jun-14 15:34

### Analytical Report for Samples

Client Sample ID	Lab Sample ID	Matrix	Sampled	Received	Container
BGT Composite	P406109-01A	Soil	06/26/14	06/26/14	Glass Jar, 4 oz.

Partial or incomplete reproduction of this report is prohibited, unless approved by Envirotech, Inc.

5796 US Highway 64, Farmington, NM 87401

Three Springs • 65 Mercado Street, Suite 115, Durango, CO 81301

Ph (505) 632-0615 Fx (505) 632-1865

Ph (970) 259-0615 Fr (800) 362-1879

envirotech-inc.com  
laboratory@envirotech-inc.com



XTO Energy Inc.	Project Name:	Ute Indians A 29	
382 CR 3100	Project Number:	98031-0528	<b>Reported:</b>
Aztec NM, 87410	Project Manager:	James McDaniel	30-Jun-14 15:34

**BGT Composite**  
**P406109-01 (Solid)**

Analyte	Result	Reporting		Dilution	Batch	Prepared	Analyzed	Method	Notes
		Limit	Units						
Total Petroleum Hydrocarbons by 418.1									
Total Petroleum Hydrocarbons	643	20.0	mg/kg	1	1426032	06/26/14	06/26/14	EPA 418.1	

Partial or incomplete reproduction of this report is prohibited, unless approved by Envirotech, Inc.

5796 US Highway 64, Farmington, NM 87401

Ph (505) 632-0615 Fx (505) 632-1865

Three Springs - 65 Mercado Street, Suite 115, Durango, CO 81301

Ph (970) 259-0615 Fr (800) 362-1879

envirotech-inc.com  
laboratory@envirotech-inc.com

XTO Energy Inc.	Project Name:	Ute Indians A 29	<b>Reported:</b> 30-Jun-14 15:34
382 CR 3100	Project Number:	98031-0528	
Aztec NM, 87410	Project Manager:	James McDaniel	

**Total Petroleum Hydrocarbons by 418.1 - Quality Control**
**Envirotech Analytical Laboratory**

Analyte	Result	Reporting Limit	Units	Spike Level	Source Result	%REC	%REC Limits	RPD	RPD Limit	Notes
<b>Batch 1426032 - 418 Freon Extraction</b>										
<b>Blank (1426032-BLK1)</b>				Prepared & Analyzed: 26-Jun-14						
Total Petroleum Hydrocarbons	ND	20.0	mg/kg							
<b>Duplicate (1426032-DUP1)</b>				Source: P406109-01 Prepared & Analyzed: 26-Jun-14						
Total Petroleum Hydrocarbons	551	20.0	mg/kg		643			15.4	30	
<b>Matrix Spike (1426032-MS1)</b>				Source: P406109-01 Prepared & Analyzed: 26-Jun-14						
Total Petroleum Hydrocarbons	2570	20.0	mg/kg	2020	643	95.6	80-120			

Partial or incomplete reproduction of this report is prohibited, unless approved by Envirotech, Inc.



XTO Energy Inc.  
382 CR 3100  
Aztec NM, 87410

Project Name: Ute Indians A 29  
Project Number: 98031-0528  
Project Manager: James McDaniel

Reported:  
30-Jun-14 15:34

#### Notes and Definitions

DET Analyte DETECTED  
ND Analyte NOT DETECTED at or above the reporting limit  
NR Not Reported  
dry Sample results reported on a dry weight basis  
RPD Relative Percent Difference

Partial or incomplete reproduction of this report is prohibited, unless approved by Envirotech, Inc.


5796 US Highway 64, Farmington, NM 87401

Three Springs • 65 Mercado Street, Suite 115, Durango, CO 81301

Ph (505) 632-0615 Fx (505) 632-1865

Ph (970) 259-0615 Fr (800) 362-1879

envirotech-inc.com  
laboratory@envirotech-inc.com

	Quote Number		Page <u>1</u> of <u>1</u>		<b>Analysis</b> <div style="display: flex; justify-content: space-around; height: 100px;"> <div style="writing-mode: vertical-rl; transform: rotate(180deg);">2/8.1</div> </div>						<b>Lab Information</b> <u>98031-0528</u> <del>10031</del>			
	XTO Contact		XTO Contact Phone # <u>505 386-8018</u>								<b>Office Abbreviations</b> Farmington = FAR Durango = DUR Bakken = BAK Raton = RAT Piceance = PC Roosevelt = RSV La Barge = LB Orangeville = OV			
	Email Results to: <u>JAMES, KURT, LOGAN</u>													
Well Site/Location <u>Ute Indians A29</u>	API Number <u>30-046-70030</u>		Test Reason <u>BGT CLOSURE CPHA</u>											
Collected By <u>Logan Hixon</u>	Samples on Ice <u>(S/N)</u>		Turnaround											
Company <u>XTO</u>	QA/QC Requested		<input checked="" type="checkbox"/> Standard <input type="checkbox"/> Next Day <u>RUSH</u> <input type="checkbox"/> Two Day <input type="checkbox"/> Three Day <input type="checkbox"/> Std. 5 Bus. Days (by contract)											
Signature <u>[Signature]</u>	Gray Areas for Lab Use Only!		Date Needed _____											
Sample ID	Sample Name	Media	Date	Time	Preservative	No. of Conts.							Sample Number	
<u>FARLH-062614-1140</u>	<u>BGT COMPOSIT</u>	<u>S</u>	<u>6-26</u>	<u>1140</u>	<u>COB</u>	<u>1-400</u>							<u>2401009120N</u>	
Media : Filter = F   Soil = S   Wastewater = WW   Groundwater = GW   Drinking Water = DW   Sludge = SG   Surface Water = SW   Air = A   Drill Mud = DM   Other = OT														
Relinquished By: (Signature) <u>[Signature]</u>		Date: <u>6-26-14</u>		Time: <u>12:50</u>		Received By: (Signature)		Number of Bottles:		Sample Condition				
Relinquished By: (Signature)		Date:		Time:		Received By: (Signature)		Temperature <u>24.7</u>		Other Information				
Relinquished By: (Signature)		Date:		Time:		Received for Lab by (Signature) <u>[Signature]</u>		Date: <u>6/26/14</u>		Time: <u>1252</u>				
Comments														

\* Sample ID will be the office and sampler-date-military time FARJM-MMDDYY-1200

0073

## Hixon, Logan

---

**From:** Hixon, Logan  
**Sent:** Thursday, June 26, 2014 9:11 AM  
**To:** Smith, Cory, EMNRD; G. Hammond (ghammond@utemountain.org); BRANDON POWELL (brandon.powell@state.nm.us); Jonathan Kelly (jonathan.kelly@state.nm.us)  
**Cc:** McDaniel, James (James\_McDaniel@xtoenergy.com); Hoekstra, Kurt; Naegele, Otto (Otto\_Naegele@xtoenergy.com)  
**Subject:** 72 Hour BGT Closure Notification- Ute Indians A 29 (30-045-30030)

Mr. Hammond & Mr. Smith,

Please accept this email as the required 72 hour notification for BGT closure activities at the following site:

*-Ute Indians A 29 (API 30-045-30030) located in Section 36 (K), Township 32N, Range 14W, San Juan County, New Mexico.*

This BGT is being closed due to the P&A'ing of this well site.

Thank you and have a good day!

*If you have any questions or concerns do not hesitate to contact me at anytime. Thank you and have a good day!*

**Thank You!**

XTO ENERGY INC., an ExxonMobil subsidiary

Logan Hixon | 72 Suttle Street, Suite J | Durango, CO 81303 | ph: 970-247-7708 | Cell: 505-386-8018

Logan Hixon | 382 CR 3100 | Aztec, NM 87410 | ph: 505-333-3100 | [Logan\\_Hixon@xtoenergy.com](mailto:Logan_Hixon@xtoenergy.com)

*This document may contain information that is privileged, confidential and exempt from disclosure under applicable law. If you are not the intended recipient, you are on notice that any unauthorized disclosure, copying, distribution or taking of any action in reliance on the contents of this document is prohibited.*



## Hixon, Logan

---

**From:** Hixon, Logan  
**Sent:** Friday, August 01, 2014 2:37 PM  
**To:** Smith, Cory, EMNRD  
**Cc:** McDaniel, James (James\_McDaniel@xtoenergy.com); Hoekstra, Kurt  
**Subject:** FW: 72 Hour BGT Closure Notification 8/1/14- Ute Indians A 29 (30-045-30030)

Mr. Smith,

Due to an unforeseen delay in closure of this BGT and it was not closed within a week's time; this is a follow up email notification for the following site:

Please accept this email as the required 72 hour notification for BGT closure activities at the following site:

*-Ute Indians A 29 (API 30-045-30030) located in Section 36 (K), Township 32N, Range 14W, San Juan County, New Mexico.*

This BGT is being closed due to the P&A'ing of this well site.

If there is any unforeseen delays in closure of this BGT and it will not be closed within a week's time, a follow up email notification will be made for the change.

Thank you and have a good day!

*If you have any questions or concerns do not hesitate to contact me at anytime. Thank you and have a good day!*

**Thank You!**

XTO ENERGY INC., an ExxonMobil subsidiary

Logan Hixon | 72 Suttle Street, Suite J | Durango, CO 81303 | ph: 970-247-7708 | Cell: 505-386-8018

Logan Hixon | 382 CR 3100 | Aztec, NM 87410 | ph: 505-333-3100 | [Logan\\_Hixon@xtoenergy.com](mailto:Logan_Hixon@xtoenergy.com)

*This document may contain information that is privileged, confidential and exempt from disclosure under applicable law. If you are not the intended recipient, you are on notice that any unauthorized disclosure, copying, distribution or taking of any action in reliance on the contents of this document is prohibited.*

---

**From:** Hixon, Logan  
**Sent:** Thursday, June 26, 2014 9:11 AM  
**To:** Smith, Cory, EMNRD; G. Hammond ([ghammond@utemountain.org](mailto:ghammond@utemountain.org)); BRANDON POWELL ([brandon.powell@state.nm.us](mailto:brandon.powell@state.nm.us)); Jonathan Kelly ([jonathan.kelly@state.nm.us](mailto:jonathan.kelly@state.nm.us))

**Cc:** McDaniel, James ([James\\_McDaniel@xtoenergy.com](mailto:James_McDaniel@xtoenergy.com)); Hoekstra, Kurt; Naegele, Otto ([Otto\\_Naegele@xtoenergy.com](mailto:Otto_Naegele@xtoenergy.com))  
**Subject:** 72 Hour BGT Closure Notification- Ute Indians A 29 (30-045-30030)

Mr. Hammond & Mr. Smith,

Please accept this email as the required 72 hour notification for BGT closure activities at the following site:

*-Ute Indians A 29 (API 30-045-30030) located in Section 36 (K), Township 32N, Range 14W, San Juan County, New Mexico.*

This BGT is being closed due to the P&A'ing of this well site.

Thank you and have a good day!

*If you have any questions or concerns do not hesitate to contact me at anytime. Thank you and have a good day!*

**Thank You!**

XTO ENERGY INC., an ExxonMobil subsidiary

Logan Hixon | 72 Suttle Street, Suite J | Durango, CO 81303 | ph: 970-247-7708 | Cell: 505-386-8018

Logan Hixon | 382 CR 3100 | Aztec, NM 87410 | ph: 505-333-3100 | [Logan\\_Hixon@xtoenergy.com](mailto:Logan_Hixon@xtoenergy.com)

*This document may contain information that is privileged, confidential and exempt from disclosure under applicable law. If you are not the intended recipient, you are on notice that any unauthorized disclosure, copying, distribution or taking of any action in reliance on the contents of this document is prohibited.*



# Well Below Tank Inspection Report

RouteName	StopName	Pumper	Foreman	WellName	APIWellNumber	Section	Range	Township			
DEN NM Run 87A	UTE INDIANS A 029	Magee, Chad	Morrow, Pete	UTE INDIANS A 29	3004530030	36	14W	32N			
InspectorName	Inspection Date	Inspection Time	Visible LinerTears	VisibleTankLeak Overflow	Collection OfSurfaceRun	Visible LayerOil	Visible Leak	Freeboard EstFT	PitLocation	PitType	Notes
dr	02/22/2009	09:00	No	No	No	Yes	No	5	Well Water	Below Ground	
dr	03/02/2009	09:40	No	No	No	Yes	No	5	Well Water	Below Ground	
dr	04/22/2009	02:15	No	No	No	Yes	No	5	Well Water	Below Ground	
dr	06/18/2009	08:45	No	No	No	Yes	No	4	Well Water	Below Ground	
dr	07/08/2009	10:15	No	No	No	Yes	No	3	Well Water	Below Ground	
dr	08/14/2009	09:20	No	No	No	Yes	No	4	Well Water	Below Ground	
dr	09/20/2009	02:00	No	No	No	Yes	No	4	Well Water	Below Ground	
dr	10/08/2009	11:45	No	No	No	Yes	No	4	Well Water	Below Ground	
mth	11/22/2009	08:45	No	No	No	Yes	No	3	Well Water	Below Ground	
mth	12/13/2009	12:25	No	No	No	Yes	No	4	Well Water	Below Ground	
mth	01/19/2010	03:36	No	No	No	Yes	No	4	Well Water	Below Ground	
mth	04/14/2010	10:41	No	No	No	Yes	No	5	Well Water	Below Ground	
mth	05/08/2010	09:18	No	No	No	Yes	No	6	Well Water	Below Ground	
mth	06/08/2010	02:40	No	No	No	Yes	No	5	Well Water	Below Ground	
mth	07/15/2010	11:39	No	No	No	Yes	No	6	Well Water	Below G pit tk rprd	
mth	08/07/2010	09:11	No	No	No	Yes	No	6	Well Water	Below Ground	
mth	09/10/2010	09:24	No	No	No	Yes	No	4	Well Water	Below Ground	
mth	10/07/2010	10:45	No	No	No	Yes	No	6	Well Water	Below Ground	
mth	11/10/2010	08:48	No	No	No	Yes	No	6	Well Water	Below Ground	
mth	12/11/2010	10:40	No	No	No	Yes	No	6	Well Water	Below Ground	
mth	01/06/2011	11:25	No	No	No	Yes	No	6	Well Water	Below Ground	
mth	02/10/2011	10:46	No	No	No	Yes	No	6	Well Water	Below Ground	
mth	03/15/2011	09:15	No	No	No	Yes	No	5	Well Water	Below Ground	
mth	04/11/2011	09:06	No	No	No	Yes	No	5	Well Water	Below Ground	
chad m	05/27/2011	10:34	No	No	No	Yes	No	5	Well Water	Below Ground	
chad m	06/23/2011	09:14	No	No	No	Yes	No	5	Well Water	Below Ground	
chad m	07/13/2011	11:49	No	No	No	Yes	No	5	Well Water	Below Ground	
chad m	08/22/2011	11:54	No	No	No	Yes	No	5	Well Water	Below Ground	
chad m	09/23/2011	10:54	No	No	No	Yes	No	5	Well Water	Below Ground	
chad m	10/28/2011	01:54	No	No	No	Yes	No	5	Well Water	Below Ground	
chad m	11/16/2011	01:09	No	No	No	Yes	No	5	Well Water	Below Ground	
chad m	01/30/2012	11:21	No	No	No	Yes	No	5	Well Water	Below Ground	
chad m	03/12/2012	12:06	No	No	No	Yes	No	5	Well Water	Below Ground	
chad m	04/17/2012	03:00	No	No	No	Yes	No	5	Well Water	Below Ground	
chad m	05/31/2012	11:28	No	No	No	Yes	No	5	Well Water	Below Ground	
chad m	07/31/2012	11:29	No	No	No	Yes	No	5	Well Water	Below Ground	
chad m	08/27/2012	09:46	No	No	No	Yes	No	5	Well Water	Below Ground	
chad m	09/27/2012	08:46	No	No	No	Yes	No	5	Well Water	Below Ground	
chad m	10/15/2012	01:46	No	No	No	Yes	No	5	Well Water	Below Ground	
chad m	11/05/2012	10:45	No	No	No	Yes	No	5	Well Water	Below Ground	

XTO Energy, Inc.  
Ute Indians A 29 (30-045-30030)  
Section 3 (J), Township 31N, Range 14W  
Closure Date: August 7, 2014



Photo 1: Ute Indians A 29 after Reclamation.



Photo 2: Ute Indians A 29 after Reclamation.

XTO Energy, Inc.  
Ute Indians A 29 (30-045-30030)  
Section 3 (J), Township 31N, Range 14W  
Closure Date: August 7, 2014



Photo 3: Ute Indians A 29 after Reclamation.

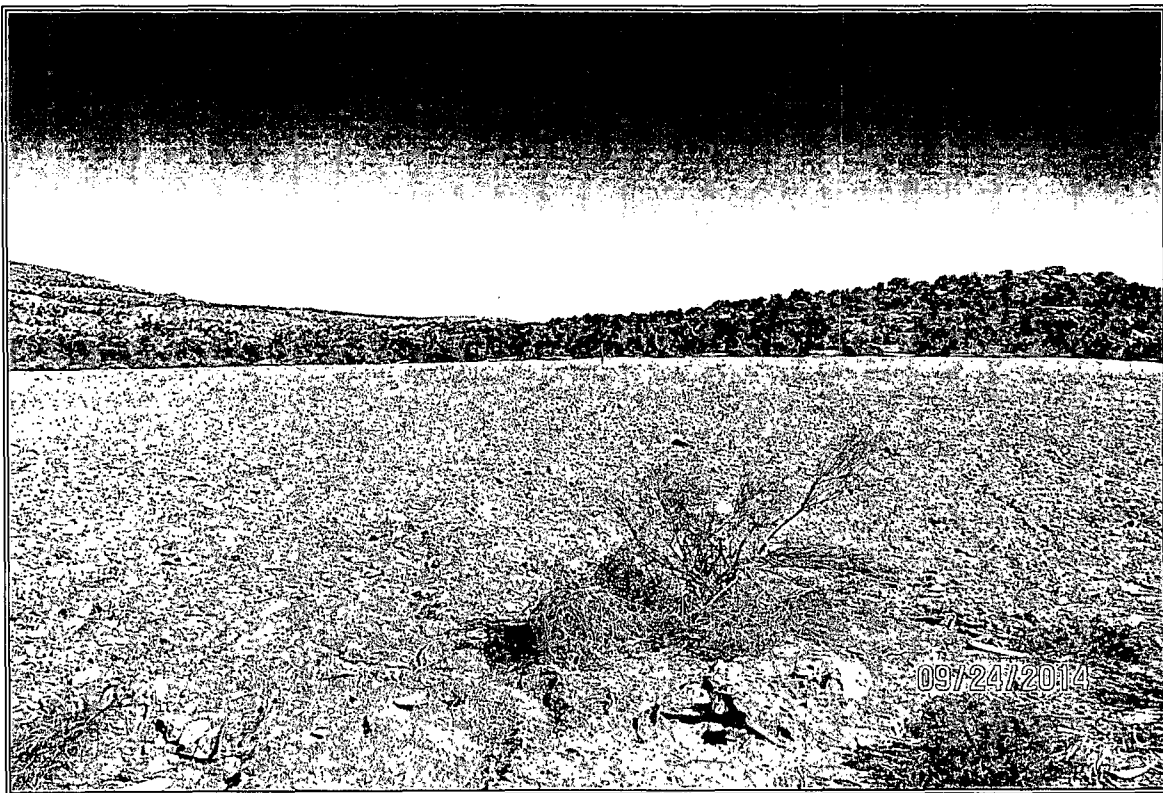


Photo 4: Ute Indians A 29 after Reclamation.