

UNITED STATES
DEPARTMENT OF THE INTERIOR
BUREAU OF LAND MANAGEMENTFORM APPROVED
OMB NO. 1004-0137
Expires July 31, 2010

NOV 21 2014 SUNDRY NOTICES AND REPORTS ON WELLS

Do not use this form for proposals to drill or to re-enter an
abandoned well. Use Form 3160-3 (APD) for such proposals.

SUBMIT IN TRIPLICATE - Other instructions on page 2

1. Type of Well

☐ Oil Well ☒ Gas Well ☐ Other

2. Name of Operator

XTO ENERGY INC.

3a. Address

382 CR 3100 AZTEC, NM 87410

3b. Phone No. (include area code)

505-333-3100

4. Location of Well (Footage, Sec., T., R., M., or Survey Description)

1025' FSL & 990' FEL SESE SEC.4 (P) -T25N -R11W

5. Lease Serial No.

NOOC14203600

6. If Indian, Allottee or Tribe Name

NAVAJO Surface

7. If Unit or CA/Agreement, Name and/or No.

NNM-75912

8. Well Name and No.

NOCKI #1

9. API Well No.

30-045-21125

10. Field and Pool, or Exploratory Area

BASIN DAKOTA

11. County or Parish, State

SAN JUAN NM

12. CHECK APPROPRIATE BOX(ES) TO INDICATE NATURE OF NOTICE, REPORT, OR OTHER DATA

TYPE OF SUBMISSION

☒ Notice of Intent☐ Subsequent Report☐ Final Abandonment Notice

TYPE OF ACTION

☐ Acidize☐ Alter Casing☐ Casing Repair☐ Change Plans☐ Convert to Injection☐ Deepen☐ Fracture Treat☐ New Construction☒ Plug and Abandon☐ Plug Back☐ Production (Start/Resume)☐ Reclamation☐ Recomplete☐ Temporarily Abandon☐ Water Disposal☐ Water Shut-Off☐ Well Integrity☐ Other

13. Describe Proposed or Completed Operation (clearly state all pertinent details, including estimated starting date of any proposed work and approximate duration thereof. If the proposal is to deepen directionally or recompleat horizontally, give subsurface locations and measured and true vertical depths of all pertinent markers and zones. Attach the Bond under which the work will be performed or provide the Bond No. on file with BLM/BIA. Required subsequent reports shall be filed within 30 days following completion of the involved operations. If the operation results in a multiple completion or recompleat in a new interval, a Form 3160-4 shall be filed once testing has been completed. Final Abandonment Notices shall be filed only after all requirements, including reclamation, have been completed, and the operator has determined that the final site is ready for final inspection.)

XTO Energy Inc. intends to plug and abandon this well per the attached procedure and will be using a Closed Loop System. Please see also the attached current and proposed wellbore diagrams. A Surface Reclamation Plan is not needed due to this well being located on Navajo Lands.

OIL CONS. DIV DIST. 3

DEC 09 2014

BLM'S APPROVAL OR ACCEPTANCE OF THIS
ACTION DOES NOT RELIEVE THE LESSEE AND
OPERATOR FROM OBTAINING ANY OTHER
AUTHORIZATION REQUIRED FOR OPERATIONS
ON FEDERAL AND INDIAN LANDS

SEE ATTACHED FOR
CONDITIONS OF APPROVAL

Notify NMOCD 24 hrs
prior to beginning
operations

14. I hereby certify that the foregoing is true and correct
Name (Printed/Typed)

KRISTEN D. BABCOCK

Title REGULATORY ANALYST

Signature

Kristen D. Babcock

Date 11/20/2014

THIS SPACE FOR FEDERAL OR STATE OFFICE USE

Approved by

Troy Salvers

Title PE

Date

12/4/2014

Conditions of approval, if any, are attached. Approval of this notice does not warrant or certify that the applicant holds legal or equitable title to those rights in the subject lease which would entitle the applicant to conduct operations thereon.

Office

FFO

Title 18 U.S.C. Section 1001, and Title 43 U.S.C. Section 1212, makes it a crime for any person knowingly and willfully to make to any department or agency of the United States any false, fictitious or fraudulent statements or representations as to any matter within its jurisdiction.

NMOCD

**Nocki #1
Sec 4, T 25 N, R 11 W
San Juan County, New Mexico
11/17/2014**

Plug and Abandon Procedure

AFE Number: 1410388
Spud Date: 12/8/1972
Surface Casing: 8-5/8", 24#, K-55 csg @ 610'. Cmt'd w/300 sx. Circ 48 sx cmt to surf.
Production Casing: 4-1/2", 11.6#, K-55 csg @ 6,111'. DV tl @ 2,017'. Cmt'd stage 1 w/560 sx. Cmt'd stage 2 w/360 sx. Did not circ cmt to surf. CBL ran on 11/4/2014.
Capacity: .0155 bbls/ft or .6528 gal/ft
Casing Leaks: 3,052' – 3,085'
Production Tubing: 2-3/8" string
Other in Hole: CIBP @ 5,880'
Perforations: Dakota: 5,930' – 5,964'
PBTD: 6,065'
Recent Production: 0 mcfpd, 0 bwpd, 0 bopd (CIBP).

Notify NMOCD & BLM 24 hours prior to beginning plugging operations

1. Check for COA's and approved NOI before beginning operations.
2. Test rig anchors.
3. Set flowback tank.
4. MIRU completion rig. Review JSA.
5. ND WH. NU & FT BOP.
6. Circulate hole clean.
7. MIRU cement truck. Review JSA.

Casing will not pressure test. All plugs below the leaks must be tagged

- See COA**
8. **Perforation Isolation & Dakota Top Plug (5,880' – 5,813')**: Pump 9 sx Class "B" cement (15.6 ppg, 1.18 cuft/sx yield) down tubing and spot an unbalanced plug from 5,880' – 5,813' (volume calculated with 50' excess). WOC. Tag plug.

- See COA*
9. **Gallup Top Plug (4,770' – 4,670')**: Pump 12 sx Class "B" cement (15.6 ppg, 1.18 cuft/sx yield) down tubing and spot an unbalanced plug from 4,770' – 4,670' (volume calculated with 50' excess). WOC. Tag plug.

- See COA*
10. **Mancos Top Plug (4,102' – 4,002')**: Pump 12 sx Class "B" cement (15.6 ppg, 1.18 cuft/sx yield) down tubing and spot an unbalanced plug from 4,102' – 4,002' (volume calculated with 50' excess). WOC. Tag plug.

- See COA*
11. **Mesaverde Top Plug (2,909' – 2,809')**: Pump 12 sx Class "B" cement (15.6 ppg, 1.18 cuft/sx yield) down tubing and spot an unbalanced plug from 2,909' – 2,809' (volume calculated with 50' excess). WOC.

12. Attempt to pressure test casing fr/2,809' – surface. If casing doesn't pressure test, tag subsequent plugs.

Use CBL dated 11/4/2014 to evaluate inside/outside plug placement

- See COA*
13. **Chacra Top Plug (2,280' – 2,180')**: Pump 12 sx Class "B" cement (15.6 ppg, 1.18 cuft/sx yield) down tubing and spot a balanced plug from 2,668' – 2,568' (volume calculated with 50' excess).
14. **Pictured Cliffs Top Plug (1,451' – 1,351')**: Pump 12 sx Class "B" cement (15.6 ppg, 1.18 cuft/sx yield) down tubing and spot a balanced plug from 1,451' – 1,351' (volume calculated with 50' excess).

- See COA*
15. **Fruitland Coal Top Plug (948' – 848')**: Pump 12 sx Class "B" cement (15.6 ppg, 1.18 cuft/sx yield) down tubing and spot a balanced plug from 948' – 848' (volume calculated with 50' excess).

- See COA*
16. **Kirtland, Ojo Alamo & Casing Shoe Plug (660' – 410')**: Perforate 3 squeeze holes at 660'. Establish injection rate into squeeze holes. Set 4-1/2" CIRC at 610'. Pump 127 sx Class "B" cement (15.6 ppg, 1.18 cuft/sx yield). Squeeze 104 sx outside casing and leave 23 sx inside casing from 660' – 410' (volume calculated with 50' excess inside and 100% excess).

17. **Surface Plug (100' – Surface)**: Perforate 3 squeeze holes at 100'. Open Bradenhead valve. Establish injection rate into squeeze holes. Pump 54 sx Class "B" cement (15.6 ppg, 1.18 cuft/sx yield). Squeeze 42 sx outside casing and leave 12 sx inside casing from 100' – Surface (volume calculated with 50' excess inside and 100% excess).

18. RDMO WLU.

19. TOH & LD tubing.

20. RDMO cement truck.

21. WOC 4 hours.

22. Cut off WH. Fill in casing as needed with cement. Install above ground P&A marker.

23. Cut off anchors and reclaim location.

Checklist

Regulatory:

1. NOI to P&A on form C-103 & 3160-5
2. Submit a post-work sundry on form C-103 & 3160-5 which details the P&A work and location work within 30 days of completing all required restoration work.

Equipment:

1. 1 flowback tank
2. 1 – 4-1/2" cement retainers
3. 262 sx Class "B" cement
4. 1 above ground marker

Services:

1. Completion rig
2. Cement truck
3. Wireline Unit

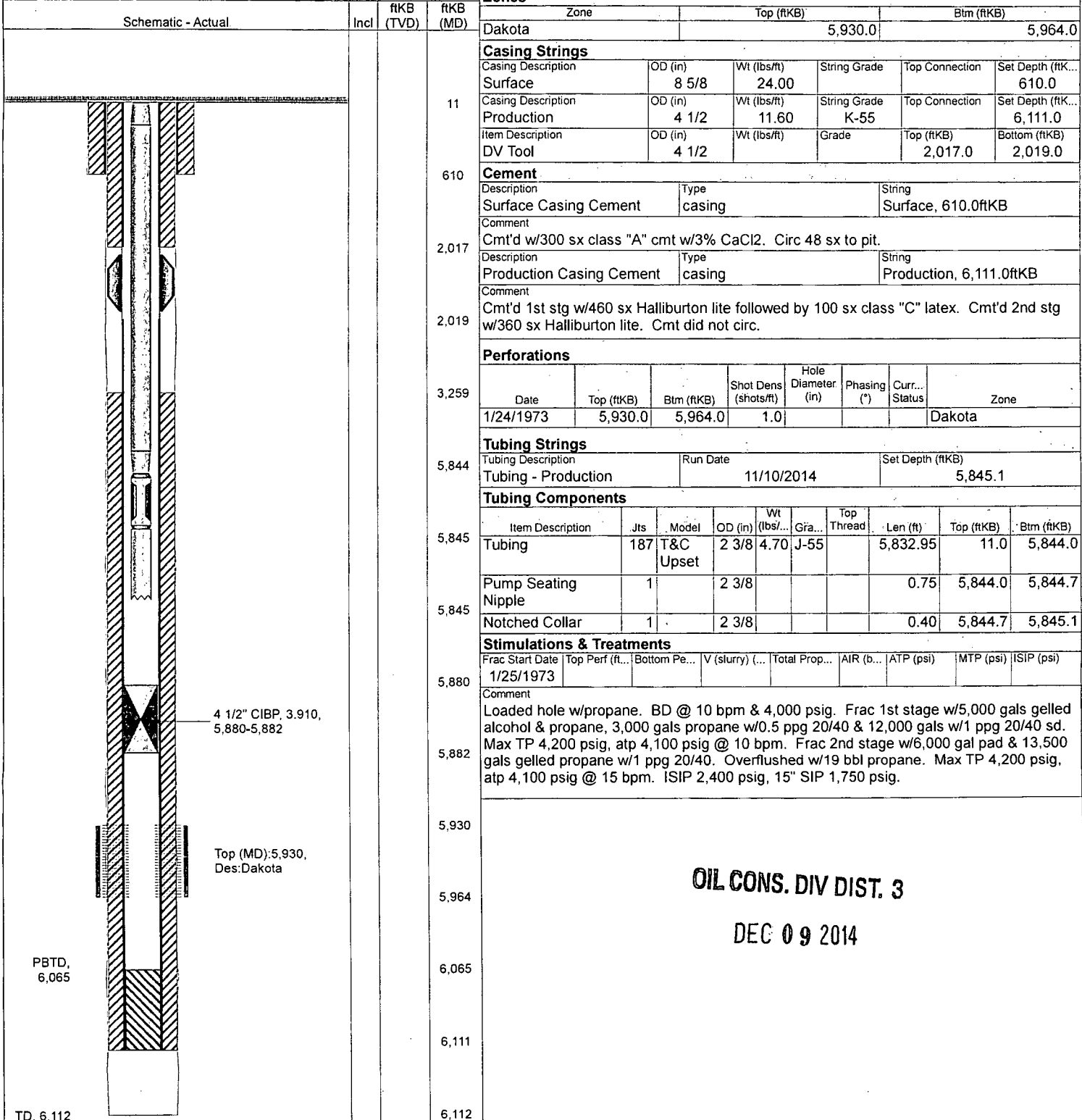


XTO - Wellbore Diagram

Well Name: Nocki 01

API/UWI 30045211250000	E/W Dist (ft) 990.0	E/W Ref FEL	N/S Dist (ft) 1,025.0	N/S Ref FSL	Location T25N-R11W-S04	Field Name Basin Dakota	County San Juan	State/Province New Mexico
Well Configuration Type Vertical	XTO ID B 70793	Orig KB Elev (ft) 6,444.00	Gr Elev (ft) 6,433.00	KB-Grd (ft) 11.00	Spud Date 12/18/1972	PBTD (All) (ftKB) Original Hole - 6065.0	Total Depth (ftKB) 6,112.0	Method Of Production Plunger Lift

Well Config: Vertical - Original Hole, 11/12/2014 1:31:08 PM



OIL CONS. DIV DIST. 3

DEC 09 2014



XTO - Proposed P&A Wellbore Diagram

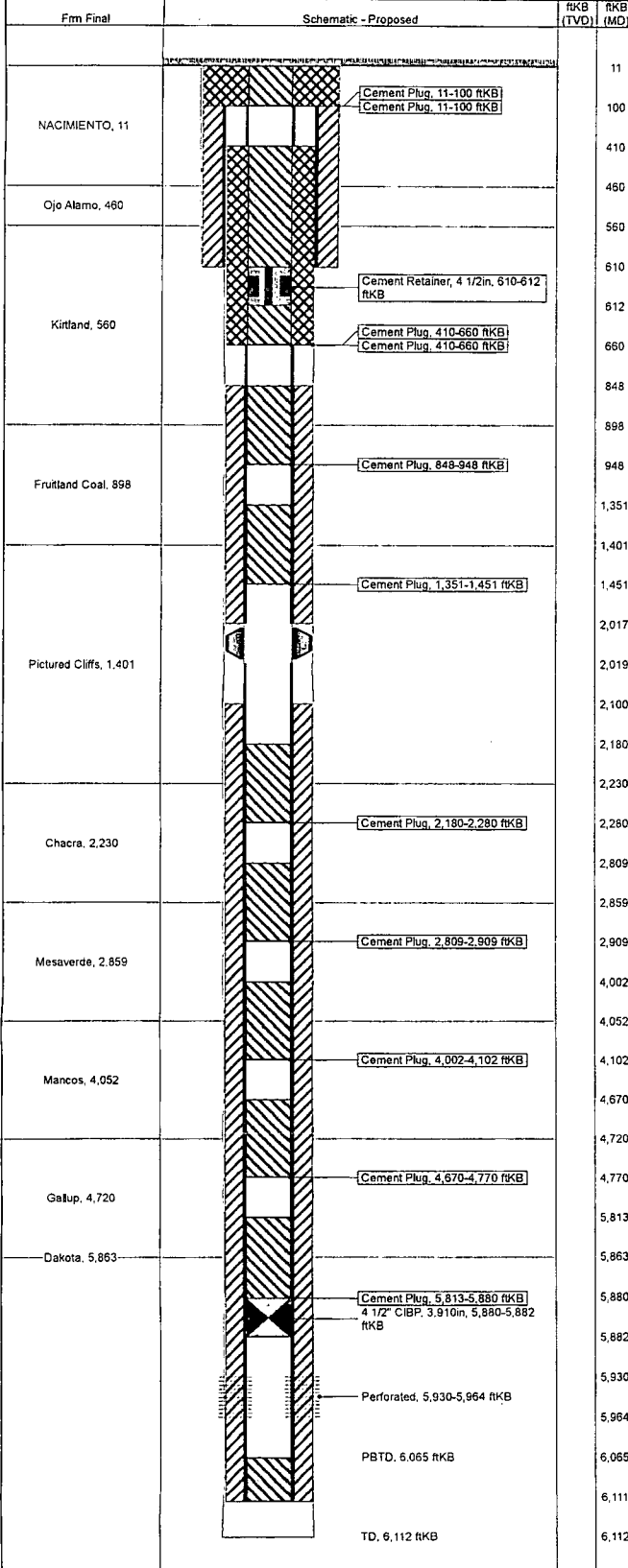
OIL CONS. DIV DIST. 3

DEC 09 2014

Well Name: Nocki 01

API/UWI 30045211250000	E/W Dist (ft) 990.0	E/W Ref FEL	N/S Dist (ft) 1,025.0	N/S Ref FSL	Location T25N-R11W-S04	Field Name Basin Dakota	County San Juan	State/Province New Mexico
Well Configuration Type Vertical	XTO ID B 70793	Orig KB Elev (ft) 6,444.00	Gr Elev (ft) 6,433.00	KB-Grd (ft) 11.00	Spud Date 12/18/1972	PBTD (All) (ftKB) Original Hole - 6065.0	Total Depth (ftKB) 6,112.0	Method Of Production Plunger Lift

Well Config: Vertical - Original Hole. 11/17/2014 3:07:28 PM



Zones					
Zone		Top (ftKB)		Btm (ftKB)	
Dakota		5,930.0		5,964.0	
Casing Strings					
Casing Description	OD (in)	Wt (lbs/ft)	String Grade	Top Connection	Set Depth (ftKB)
Surface	8 5/8	24.00			610.0
Casing Description	OD (in)	Wt (lbs/ft)	String Grade	Top Connection	Set Depth (ftKB)
Production	4 1/2	11.60	K-55		6,111.0
Item Description	OD (in)	Wt (lbs/ft)	Grade	Top (ftKB)	Bottom (ftKB)
DV Tool	4 1/2			2,017.0	2,019.0
Cement					
Description	Type			String	
Surface Casing Cement	casing			Surface, 610.0ftKB	
Comment					
Cmt'd w/300 sx class "A" cmt w/3% CaCl2. Circ 48 sx to pit.					
Description	Type			String	
Production Casing Cement	casing			Production, 6,111.0ftKB	
Comment					
Cmt'd 1st stg w/460 sx Halliburton lite followed by 100 sx class "C" latex. Cmt'd 2nd stg w/360 sx Halliburton lite. Cmt did not circ.					
Description	Type			String	
Cement Plug	plug			Production, 6,111.0ftKB	
Comment					
Plug 1: Pump 9 sx fr/ 5,880' - 5,813					
Description	Type			String	
Cement Plug	plug			Production, 6,111.0ftKB	
Comment					
Plug 2: Pump 12 sx fr/ 4,770' - 4,670'					
Description	Type			String	
Cement Plug	plug			Production, 6,111.0ftKB	
Comment					
Plug 3: Pump 12 sx fr/ 4,102' - 4,002'					
Description	Type			String	
Cement Plug	plug			Production, 6,111.0ftKB	
Comment					
Plug 4: Pump 12 sx fr/ 2,909' - 2,809'					
Description	Type			String	
Cement Plug	plug			Production, 6,111.0ftKB	
Comment					
Plug 5: Pump 12 sx fr/ 2,280' - 2,180'					
Description	Type			String	
Cement Plug	plug			Production, 6,111.0ftKB	
Comment					
Plug 6: Pump 12 sx fr/ 1,451' - 1,351'					
Description	Type			String	
Cement Plug	plug			Production, 6,111.0ftKB	
Comment					
Plug 7: Pump 12 sx fr/ 948' - 848'					
Description	Type			String	
Cement Plug	plug			Production, 6,111.0ftKB	
Comment					
Plug 8 (inside): Pump 23 sx fr/ 660' - 410'					
Description	Type			String	
Cement Plug	plug			Production, 6,111.0ftKB	
Comment					
Plug 9 (inside): Pump 12 sx fr/ 100' - surface.					
Description	Type			String	
Cement Plug	squeeze			Production, 6,111.0ftKB	
Comment					
Plug 8 (outside): Pump 104 sx from 660' - 410'					
Description	Type			String	
Cement Plug	squeeze			Production, 6,111.0ftKB	
Comment					
Plug 9 (outside): Pump 42 sx fr/ 100' - surface.					
Other In Hole					
Description			OD (in)	Top (ftKB)	
Cement Retainer			4 1/2	610.0	
4 1/2" CIBP			3.91	5,880.0	

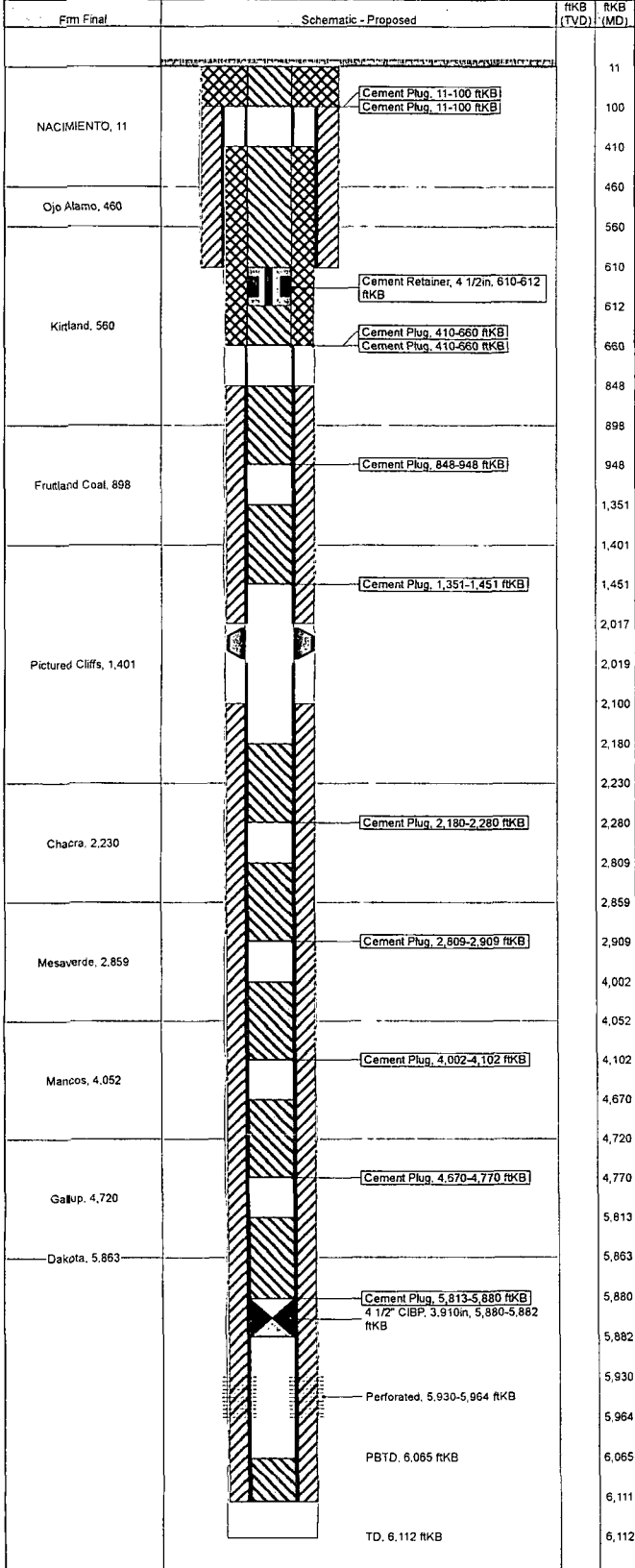


XTO - Proposed P&A Wellbore Diagram

Well Name: Nocki 01

API/UWI 30045211250000	EW Dist (ft) 990.0	EW Ref FEL	N/S Dist (ft) 1,025.0	N/S Ref FSL	Location T25N-R11W-S04	Field Name Basin Dakota	County San Juan	State/Province New Mexico
Well Configuration Type Vertical	XTO ID B 70793	Orig KB Elev (ft) 6,444.00	Gr Elev (ft) 6,433.00	KB-Grd (ft) 11.00	Spud Date 12/18/1972	PBTD (All) (ftKB) Original Hole - 6065.0	Total Depth (ftKB) 6,112.0	Method Of Production Plunger Lift

Well Config: Vertical - Original Hole, 11/17/2014 3:07:28 PM



Perforations

Date	Top (ftKB)	Btm (ftKB)	Shot Dens (shots/ft)	Hole Diameter (in)	Phasing (°)	Zone
1/24/1973	5,930.0	5,964.0	1.0			Dakota

UNITED STATES DEPARTMENT OF THE INTERIOR
BUREAU OF LAND MANAGEMENT
FARMINGTON DISTRICT OFFICE
6251 COLLEGE BLVD.
FARMINGTON, NEW MEXICO 87402

Attachment to notice of
Intention to Abandon:

Re: Permanent Abandonment
Well: Nocki #1

CONDITIONS OF APPROVAL

1. Plugging operations authorized are subject to the attached "General Requirements for Permanent Abandonment of Wells on Federal and Indian Lease."

2. Farmington Office is to be notified at least 24 hours before the plugging operations commence (505) 564-7750.

3. The following modifications to your plugging program are to be made:

- a) Bring the top of plug #1 to 5778 ft. to cover the Graneros top. Adjust cement volume accordingly.
- b) Set plug #2 (4965-4865) ft. to cover the Gallup top.
- c) Set plug #3 (4147-4047) ft. to cover the Mancos top.
- d) Set plug #4 (2275-2175) ft. to cover the Mesaverde top.
- e) Set plug #5 (1830-1730) ft. to cover the Chacra top.
- f) Set plug #7 (1150-1050) ft. to cover the Fruitland top.
- g) Bring the top of plug #8 to 380 ft. to cover through the Ojo Alamo top. Adjust cement volume accordingly.

Note: The CBL ran 11/4/2014 will suffice for plugging proposes.

You are also required to place cement excesses per 4.2 and 4.4 of the attached General Requirements.

Office Hours: 7:45 a.m. to 4:30 p.m.