

UNITED STATES

DEPARTMENT OF THE INTERIOR
BUREAU OF LAND MANAGEMENT

RECEIVED

Sundry Notices and Reports on Wells

OCT 02 2014

Farmington Field Office

1. Type of Well: Management

☒ Oil Well☐ Gas Well☐ Other:

2. Name of Operator:

Merrion Oil & Gas Corp

3. Address & Phone No. of Operator:

610 Reilly Ave Farmington, NM 87401 505-324-5300

4. Location of Well, Footage, Sec., T, R, M:

Unit H (SENE) 2270' FNL & 790' FEL, Sec. 10, T24N, R8W, NMPM

5. Lease Number:

NM-014580A

6. If Indian, All. Or Tribe Name:

NA

7. Unit Agreement Name:

8. Well Name & Number:

Federal A #3

9. API Well No.:

30-045-26525

10. Field and Pool:

N. Duffers Pt Gallup DK

11. County and State:

San Juan County, NM

12. CHECK APPROPRIATE BOX TO INDICATE NATURE OF NOTICE, REPORT, OTHER DATA

Type of Submission:

☐ Notice of Intent☒ Subsequent Report☐ Final Abandonment

Type of Action:

☐ Acidize☐ Alter Casing☐ Casing Repair☐ Change of Plans☐ Convert to Injection☐ Deepen☐ Fracture Treat☐ New Construction☐ Plug & Abandon☐ Plug Back☐ Production (Start/Resume)☐ Reclamation☐ Recomplete☐ Temp Abandon☐ Water Disposal☐ Water Shut-off☐ Well Integrity☒ Other:

13. Describe Proposed or Completed Operation:

1/17/2014- RU A Plus Well Service. Set CICR @ 4810' KB, approximate fluid level w/wireline @ 1050'. Rigout wireline. RIH with the 19 stands tbg

1/21/2014 Fluid level report attached

2/21/2014 Fluid level report attached

3/19/2014 Fluid level report attached

9/26/2014 Fluid level report attached

Merrion Oil & Gas will be submitting a NOI to P&A the well by 10/13/2014.

ACCEPTED FOR RECORD

JAN 14 2015

FARMINGTON FIELD OFFICE

BY: T. Salazar

14. I hereby certify that the foregoing is true and correct.

Signed

Philana ThompsonTitle Regulatory Compliance Spec.Date 9/29/2014

(This space for Federal or State Office use)

APPROVED BY

Title

Date

CONDITION OF APPROVAL, if any:

Title 18 U.S.C. Section 1001, makes it a crime for any person knowingly and willfully to make any department or agency of the United States any false, fictitious or fraudulent statements or representations as to any matter within its jurisdiction.

NMOCD

12



Federal A-3 Fluid Level Report

The fluid level for the Federal A-3 taken January 21st, 2014 was determined to be around 630 feet from surface. As part as our ongoing agreement we continue to shoot fluid levels to ensure no crossflow is established with the upper casing hole (351'KB-382'KB). The fluid level results taken February 21st, 2014 are as follows:

- Collar detection identified the fluid level 597' from surface.
- Acoustic velocity identified the fluid level 603' from surface.

Because the fluid level is still below the casing hole (351'KB-382'KB), we feel confident the current fluid level does not pose a threat for crossflow or ground water contamination. We will continue monthly fluid level tests to ensure the fluid level remains stationary and below the upper casing hole. Please see the fluid level tests below.

((((ECHOMETER)))

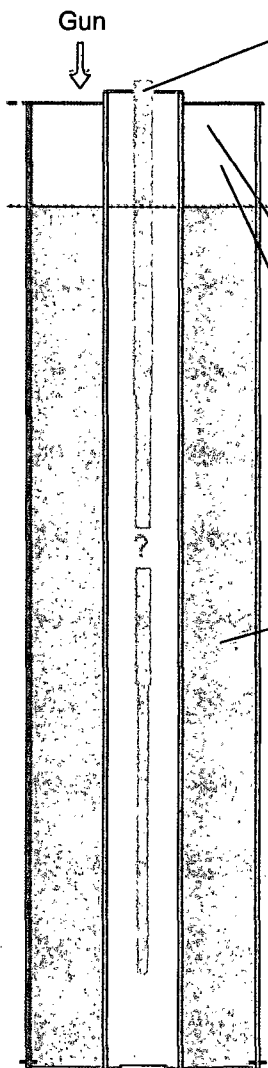
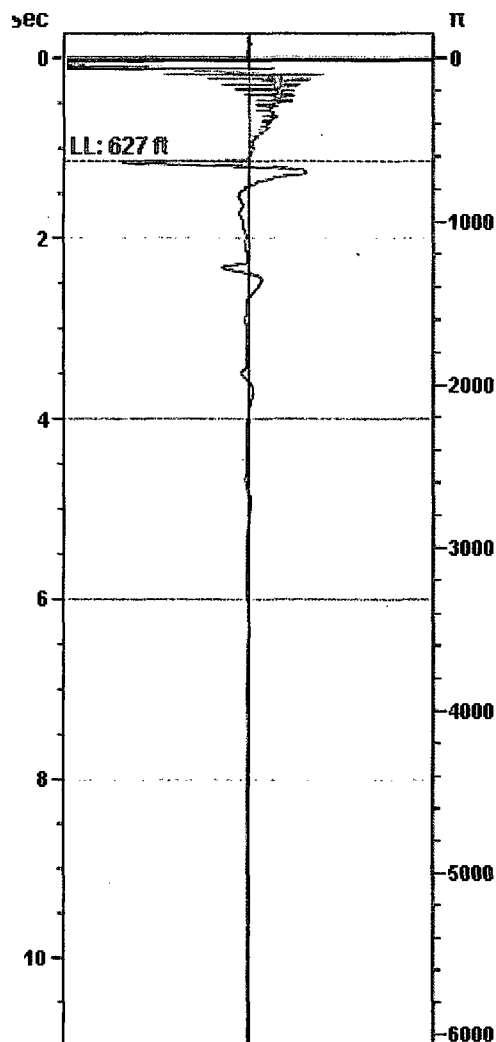
Federal A-3 01/21/2014 03:09:14PM

Liquid Level

627 ft

Fluid Above Pump
Gas Free Above Pump

5303 ft
5303 ft



Production

Date Entered 01/21/14

	Current	Potential	
Oil	**	**	BBL/D
Water	**	**	BBL/D
Gas	**	**	Mscf/D

IPR Method Vogel
Producing Efficiency 0.00%

Casing Pressure

Pressure -0.1 psi (g)

Annular Gas Flow

Gas Flow 0.1 Mscf/D

Fluid Properties

% Liquid Above Pump 100.00%
% Liquid Below Pump **

Wellbore Pressures

PIP 1587.5 psi (g) @ 5930 ft
PBHP 1579.5 psi (g) @ 5900 ft
SBHP **

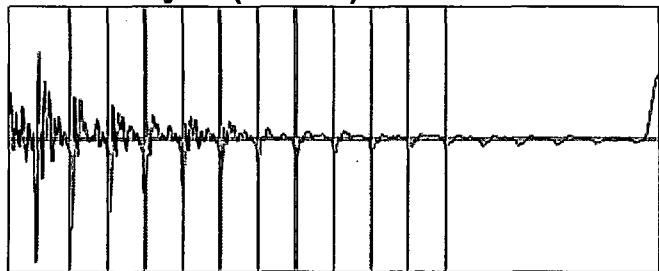
Depths

Pump Intake Depth 5930 ft
Formation Depth 5900 ft

Sensor Serial No.

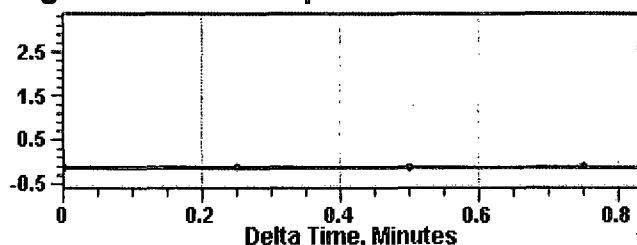
WG Unknown

Collar Analysis (Manual)



Interval Acoustic Velocity, 0.14s to 1.14s 1105 ft/s
Interval Joints Per Sec. 17.35 Jts/sec
Joints To Liquid 19.69 Jts

Casing Pressure Buildup



Casing Pressure -0.1 psi (g)
Buildup 0.0 psi (g)
Buildup Time 45 sec
Gas Gravity 1.0000 Air = 1

Comments and Recommendations

33 psi shot - Casing fluid level shot with 0 psi well pressure and a static fluid level. Average joint length at 31.85 ft.

Echometer Company
5001 Ditto Lane
Wichita Falls, TX 76302
(940) 767-4334
info@echometer.com

(((ECHOMETER)))

Federal A-3 01/21/2014 03:09:14PM

Liquid Level

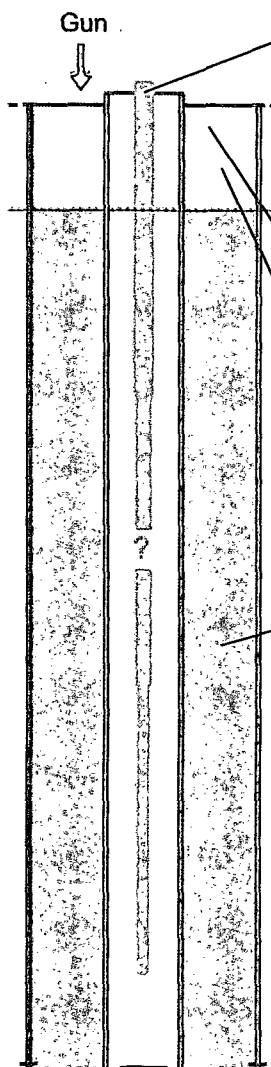
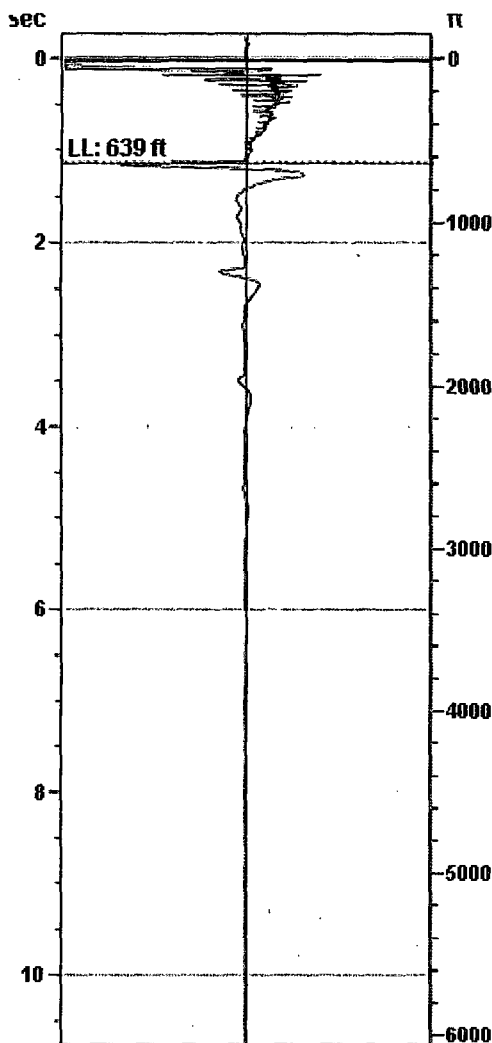
639 ft

Fluid Above Pump

5291 ft

Gas Free Above Pump

5291 ft



Production

Date Entered 01/21/14

	Current	Potential	
Oil	**	**	BBL/D
Water	**	**	BBL/D
Gas	**	**	Mscf/D

IPR Method Vogel
Producing Efficiency 0.00%

Casing Pressure

Pressure -0.1 psi (g)

Annular Gas Flow

Gas Flow 0.1 Mscf/D

Fluid Properties

% Liquid Above Pump 100.00%
% Liquid Below Pump **

Wellbore Pressures

PIP 1592.1 psi (g) @ 5930 ft
PBHP 1584.1 psi (g) @ 5900 ft
SBHP **

Depths

Pump Intake Depth 5930 ft
Formation Depth 5900 ft

Sensor Serial No.

WG Unknown

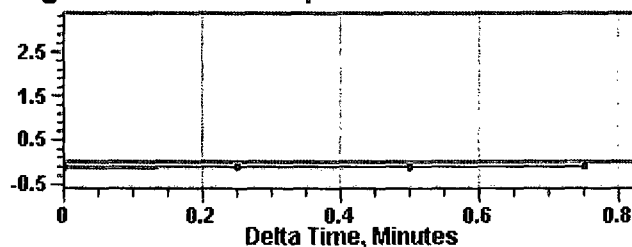
Acoustic Velocity

Acoustic Velocity
Joints Per Sec.
Joints To Liquid
Gas Gravity

1126 ft/s
17.67 Jts/sec
20.06 Jts
1.0000 Air = 1

Entered From Known Acoustic Velocity

Casing Pressure Buildup



Casing Pressure -0.1 psi (g)
Buildup 0.0 psi (g)
Buildup Time 45 sec
Gas Gravity 1.0000 Air = 1

Comments and Recommendations

33 psi shot - Casing fluid level shot with 0 psi well pressure and a static fluid level. Acoustic velocity of air assumed to be 1126 ft/sec

Echometer Company
5001 Ditto Lane
Wichita Falls, TX 76302
(940) 767-4334
info@echometer.com

(((ECHOMETER)))

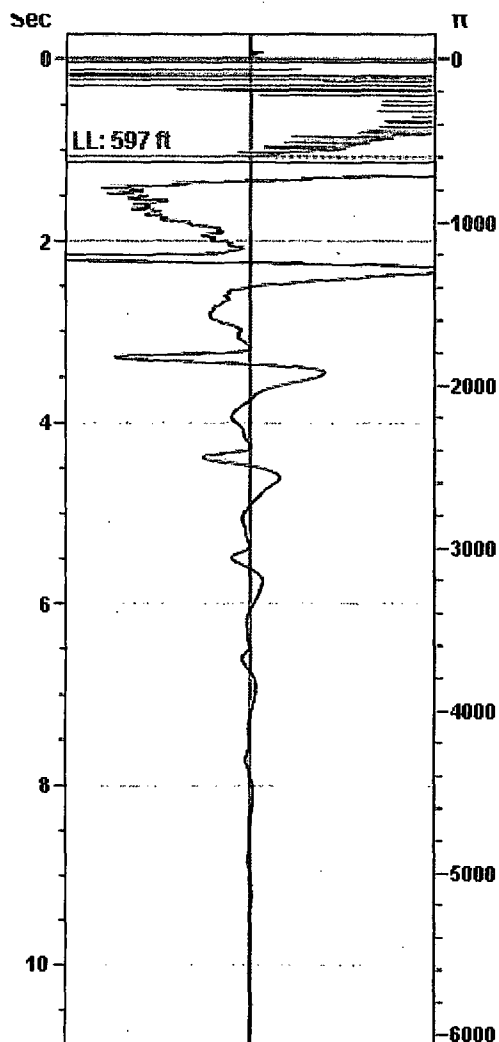
Federal A-3 02/21/2014 01:44:48PM

Liquid Level

597 ft

Fluid Above Pump
Gas Free Above Pump

5333 ft
5333 ft



Production

Date Entered 02/21/14

	Current	Potential	
Oil	**	**	BBL/D
Water	**	**	BBL/D
Gas	**	**	Mscf/D

IPR Method Vogel
Producing Efficiency 0.00%

Casing Pressure

Pressure 0.2 psi (g)

Annular Gas Flow

Gas Flow 0.0 Mscf/D

Fluid Properties

% Liquid Above Pump 100.00%
% Liquid Below Pump **

Wellbore Pressures

PIP 1596.1 psi (g) @ 5930 ft
PBHP 1588.1 psi (g) @ 5900 ft
SBHP **

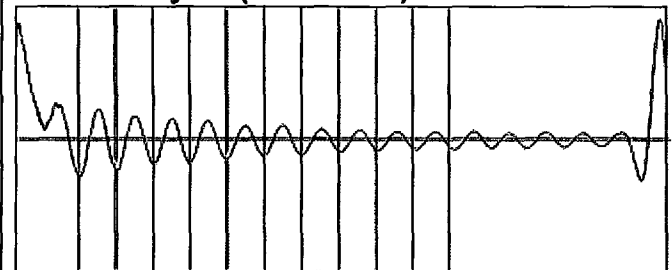
Depths

Pump Intake Depth 5930 ft
Formation Depth 5900 ft

Sensor Serial No.

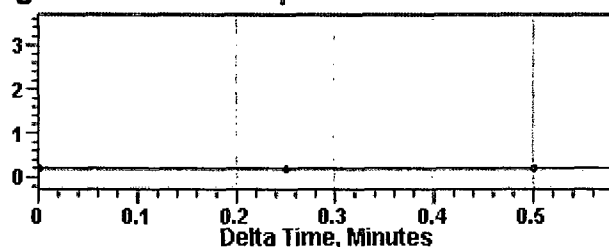
WG Unknown

Collar Analysis (Automatic)



Average Acoustic Velocity 1114 ft/s
Average Joints Per Sec. 17.57 Jts/sec
Joints To Liquid 18.82 Jts

Casing Pressure Buildup



Casing Pressure 0.2 psi (g)
Buildup 0.0 psi (g)
Buildup Time 30 sec
Gas Gravity 1.0000 Air = 1

Comments and Recommendations

33 psi casing shot - Casing fluid level shot with 0 psi well pressure. Average joint length at 31.85 ft. 2-21-14

Echometer Company
5001 Ditto Lane
Wichita Falls, TX 76302
(940) 767-4334
info@echometer.com

(((ECHOMETER)))

Federal A-3 02/21/2014 01:44:48PM

Liquid Level

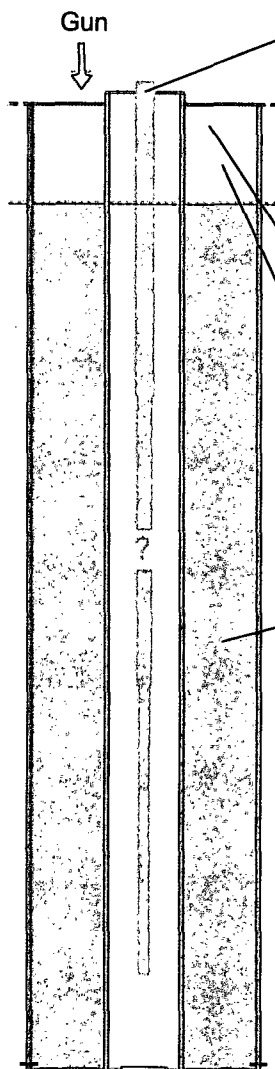
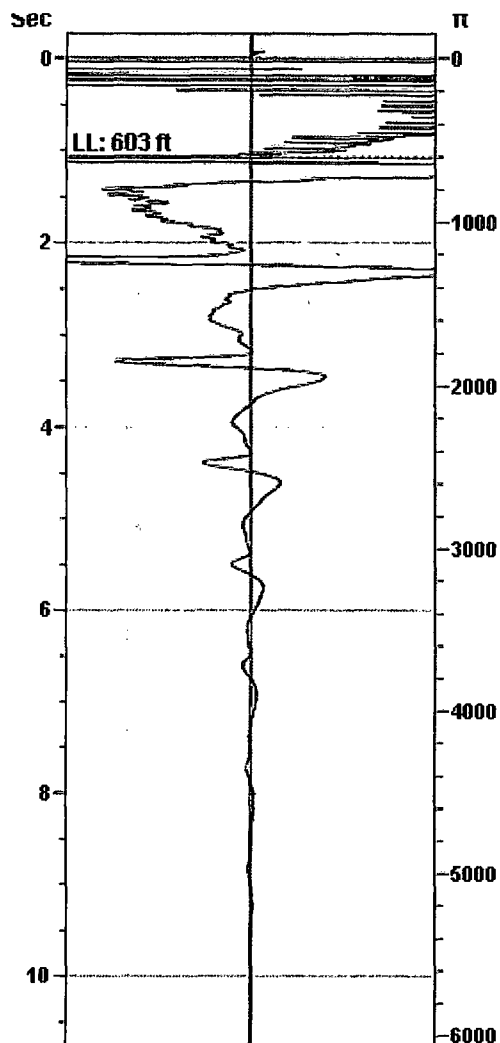
603 ft

Fluid Above Pump

5327 ft

Gas Free Above Pump

5327 ft



Production

Date Entered	02/21/14		
	Current	Potential	
Oil	**	**	BBL/D
Water	**	**	BBL/D
Gas	**	**	Mscf/D
IPR Method	Vogel		
Producing Efficiency	0.00%		

Casing Pressure

Pressure	0.2 psi (g)
----------	-------------

Annular Gas Flow

Gas Flow	0.0 Mscf/D
----------	------------

Fluid Properties

% Liquid Above Pump	100.00%
% Liquid Below Pump	**

Wellbore Pressures

PIP	1603.1 psi (g) @ 5930 ft
PBHP	1595.0 psi (g) @ 5900 ft
SBHP	**

Depths

Pump Intake Depth	5930 ft
Formation Depth	5900 ft

Sensor Serial No.

WG Unknown

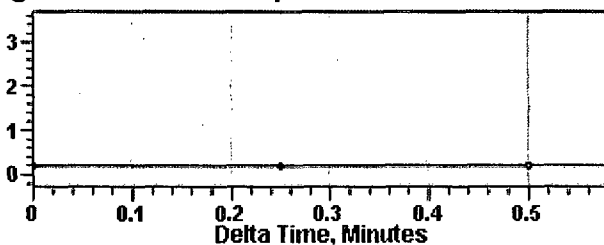
Acoustic Velocity

Acoustic Velocity
Joints Per Sec.
Joints To Liquid
Gas Gravity

1126 ft/s
17.76 Jts/sec
19.02 Jts
1.0000 Air = 1

Entered From Known Acoustic Velocity

Casing Pressure Buildup



Casing Pressure	0.2 psi (g)
Buildup	0.0 psi (g)
Buildup Time	30 sec
Gas Gravity	1.0000 Air = 1

Comments and Recommendations

33 psi casing shot - Casing fluid level shot with 0 psi well pressure. Acoustic velocity of air assumed to be 1126 ft/sec. 2-21-14

Echometer Company
5001 Ditto Lane
Wichita Falls, TX 76302
(940) 767-4334
info@echometer.com



Federal A-3 Fluid Level Report

The previous fluid levels for the Federal A-3 taken in January and February were determined to be around 630' and 600' from the surface. As part as our ongoing agreement we continued to shoot fluid levels to ensure no crossflow was established with the upper casing hole (351'KB-382'KB). The fluid level results taken March 19th, 2014 are as follows:

- Collar detection identified the fluid level 591' from surface.
- Acoustic velocity identified the fluid level 594' from surface.

Because the fluid level is still below the casing hole (351'KB-382'KB), we feel confident the current fluid level does not pose a threat for crossflow or ground water contamination. We also feel continuing monthly fluid level tests will not deliver a large variance in fluid height by this summer when we P&A the well. So, at your approval, we would like to discontinue the monthly fluid level testing .Please see the fluid level tests below.

((ECHOMETER)))

Federal A-3 03/19/2014 01:54:05PM

Liquid Level

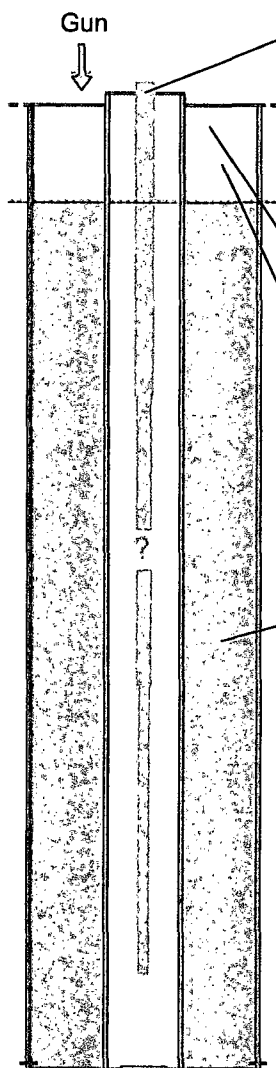
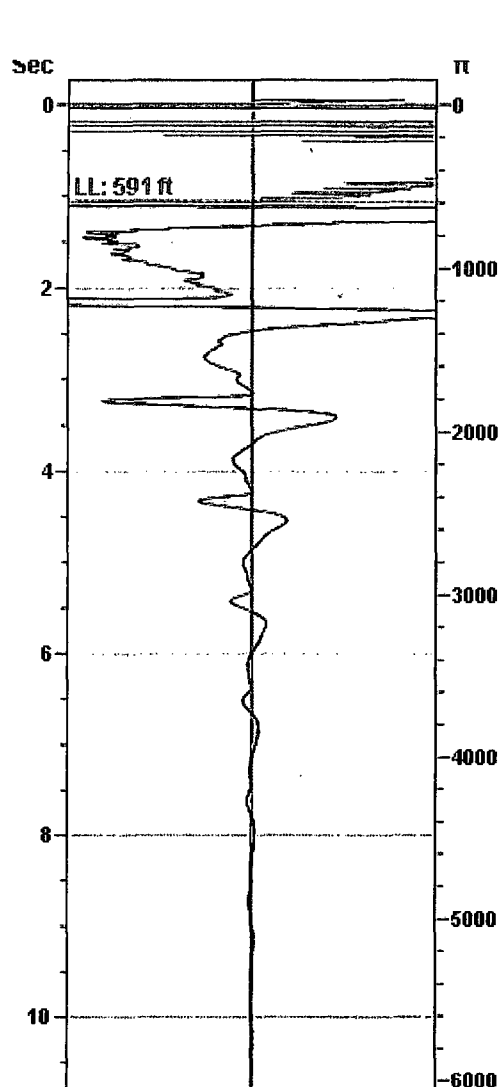
591 ft

Fluid Above Pump

5339 ft

Gas Free Above Pump

5339 ft



Production

Date Entered	03/19/14		
	Current	Potential	
Oil	**	**	BBL/D
Water	**	**	BBL/D
Gas	**	**	Mscf/D
IPR Method	Vogel		
Producing Efficiency	0.00%		

Casing Pressure

Pressure	0.2 psi (g)
----------	-------------

Annular Gas Flow

Gas Flow	0.0 Mscf/D
----------	------------

Fluid Properties

% Liquid Above Pump	100.00%
% Liquid Below Pump	**

Wellbore Pressures

PIP	1597.1 psi (g) @ 5930 ft
PBHP	1589.1 psi (g) @ 5900 ft
SBHP	**

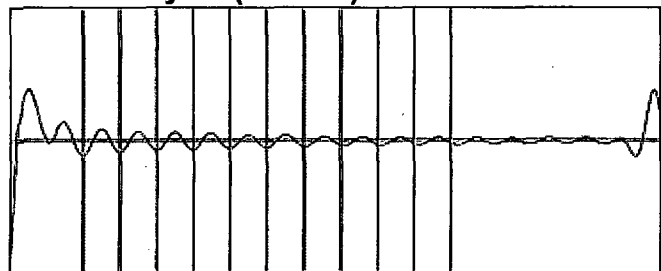
Depths

Pump Intake Depth	5930 ft
Formation Depth	5900 ft

Sensor Serial No.

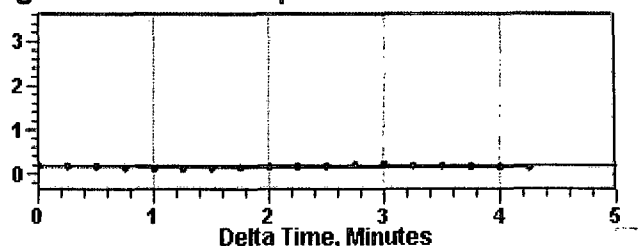
WG Unknown

Collar Analysis (Manual)



Average Acoustic Velocity	1121 ft/s
Average Joints Per Sec.	17.68 Jts/sec
Joints To Liquid	18.66 Jts

Casing Pressure Buildup



Casing Pressure	0.2 psi (g)
Buildup	-0.0 psi (g)
Buildup Time	4 min 15 sec
Gas Gravity	1.0000 Air = 1

Comments and Recommendations

33-psi casing shot- Casing fluid level shot w/ 0 psi well pressure. Average joint length at 31.85 ft. 3-19-14

Echometer Company
5001 Ditto Lane
Wichita Falls, TX 76302
(940) 767-4334
info@echometer.com

(((ECHOMETER)))

Federal A-3 03/19/2014 01:54:05PM

Liquid Level

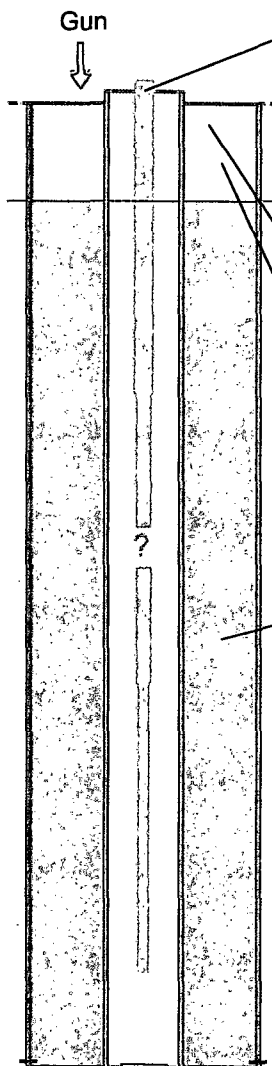
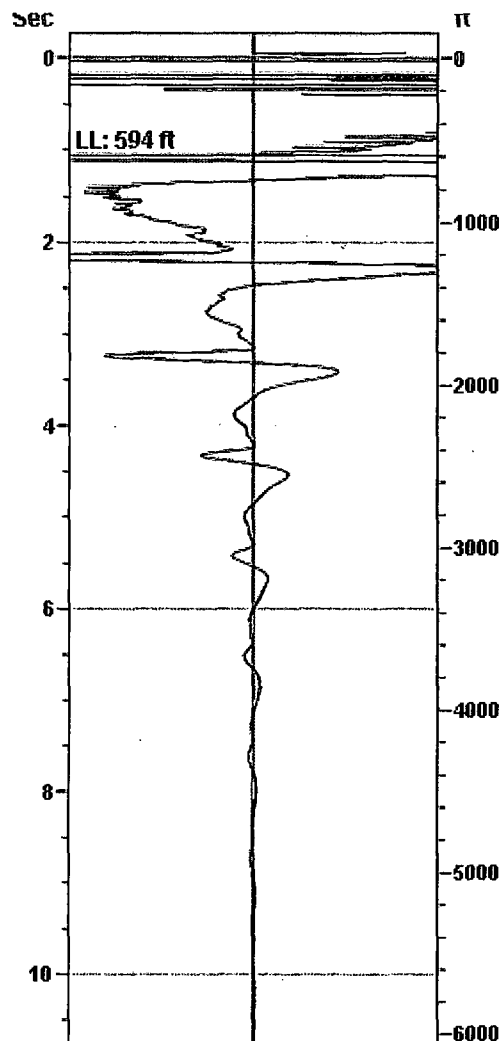
594 ft

Fluid Above Pump

5336 ft

Gas Free Above Pump

5336 ft



Production

Date Entered 03/19/14

	Current	Potential	
Oil	**	**	BBL/D
Water	**	**	BBL/D
Gas	**	**	Mscf/D

IPR Method Vogel
Producing Efficiency 0.00%

Casing Pressure

Pressure 0.2 psi (g)

Annular Gas Flow

Gas Flow 0.0 Mscf/D

Fluid Properties

% Liquid Above Pump 100.00%
% Liquid Below Pump **

Wellbore Pressures

PIP 1605.7 psi (g) @ 5930 ft
PBHP 1597.7 psi (g) @ 5900 ft
SBHP **

Depths

Pump Intake Depth 5930 ft
Formation Depth 5900 ft

Sensor Serial No.

WG Unknown

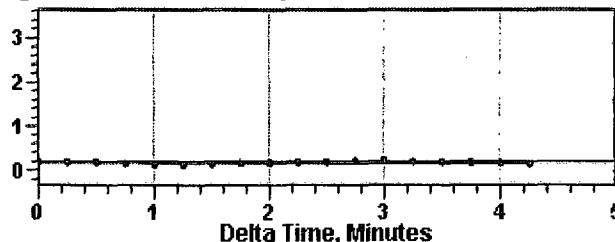
Acoustic Velocity

Acoustic Velocity
Joints Per Sec.
Joints To Liquid
Gas Gravity

1126 ft/s
17.76 Jts/sec
18.74 Jts
1.0000 Air = 1

Entered From Known Acoustic Velocity

Casing Pressure Buildup



Casing Pressure 0.2 psi (g)
Buildup -0.0 psi (g)
Buildup Time 4 min 15 sec
Gas Gravity 1.0000 Air = 1

Comments and Recommendations

33-psi casing shot- Casing fluid level shot w/ 0 psi well pressure. Acoustic velocity of air assumed to be 1126 ft/sec. 3-19-14

Echometer Company
5001 Ditto Lane
Wichita Falls, TX 76302
(940) 767-4334
info@echometer.com



Federal A-3 Fluid Level Report

Fluid levels for the Federal A-3 were measured in January, February, and March. The fluid level maintained a depth around 600' from the surface. The fluid level results taken September 26th, 2014 are as follows:

- Collar detection identified the fluid level 586' from surface.
- Acoustic velocity identified the fluid level 595' from surface.

No major alteration in the fluid level was indicated by this shot taken September 26th, 2014.

(((ECHOMETER)))

Federal A-3 09/26/2014 10:33:59AM

Liquid Level

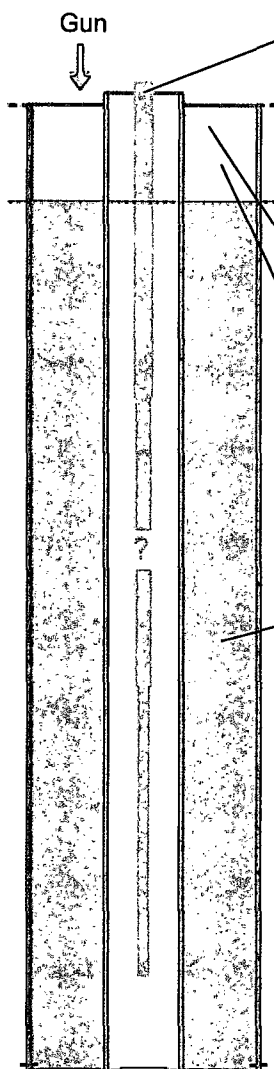
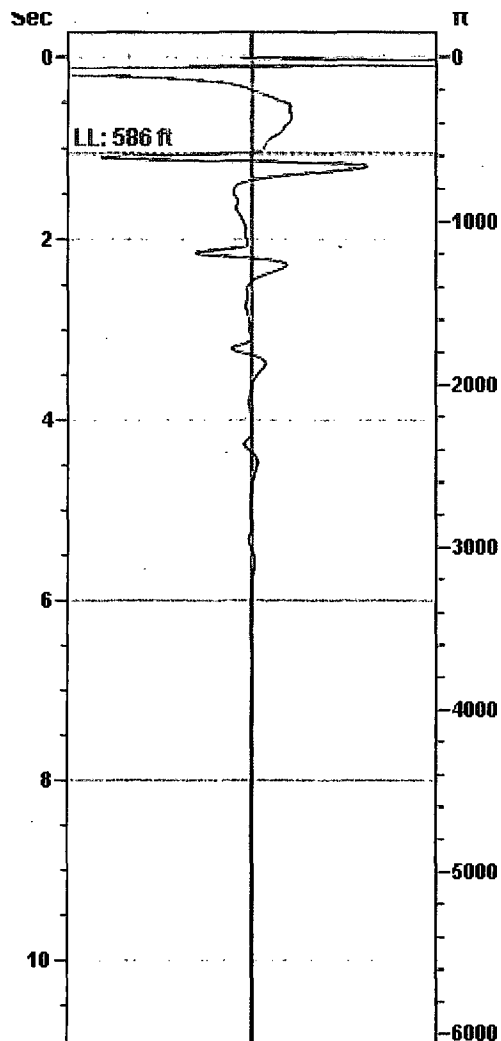
586 ft

Fluid Above Pump

5344 ft

Gas Free Above Pump

5344 ft



Production

Date Entered 09/26/14

	Current	Potential	
Oil	**	**	BBL/D
Water	**	**	BBL/D
Gas	**	**	Mscf/D

IPR Method Vogel
Producing Efficiency 0.00%

Casing Pressure

Pressure -0.3 psi (g)

Annular Gas Flow

Gas Flow 0.1 Mscf/D

Fluid Properties

% Liquid Above Pump 100.00%
% Liquid Below Pump **

Wellbore Pressures

PIP 1599.3 psi (g) @ 5930 ft
PBHP 1591.3 psi (g) @ 5900 ft
SBHP **

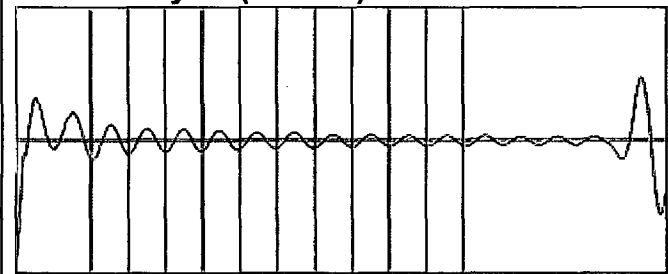
Depths

Pump Intake Depth 5930 ft
Formation Depth 5900 ft

Sensor Serial No.

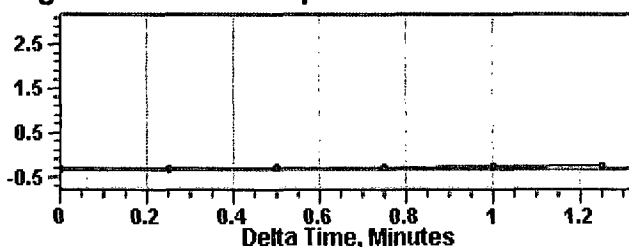
WG Unknown

Collar Analysis (Manual)



Average Acoustic Velocity 1109 ft/s
Average Joints Per Sec. 17.50 Jts/sec
Joints To Liquid 18.48 Jts

Casing Pressure Buildup



Casing Pressure -0.3 psi (g)
Buildup 0.1 psi (g)
Buildup Time 1 min 15 sec
Gas Gravity 1.0000 Air = 1

Comments and Recommendations

100 psi casing shot - Casing Fluid Level Shot w/ 0 psi well pressure. Average joint length at 31.85 ft.

Echometer Company
5001 Ditto Lane
Wichita Falls, TX 76302
(940) 767-4334
info@echometer.com

(((ECHOMETER)))

Federal A-3 09/26/2014 10:33:59AM

Liquid Level

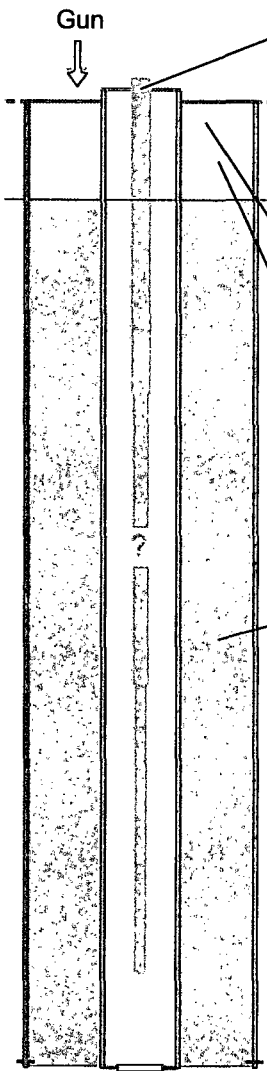
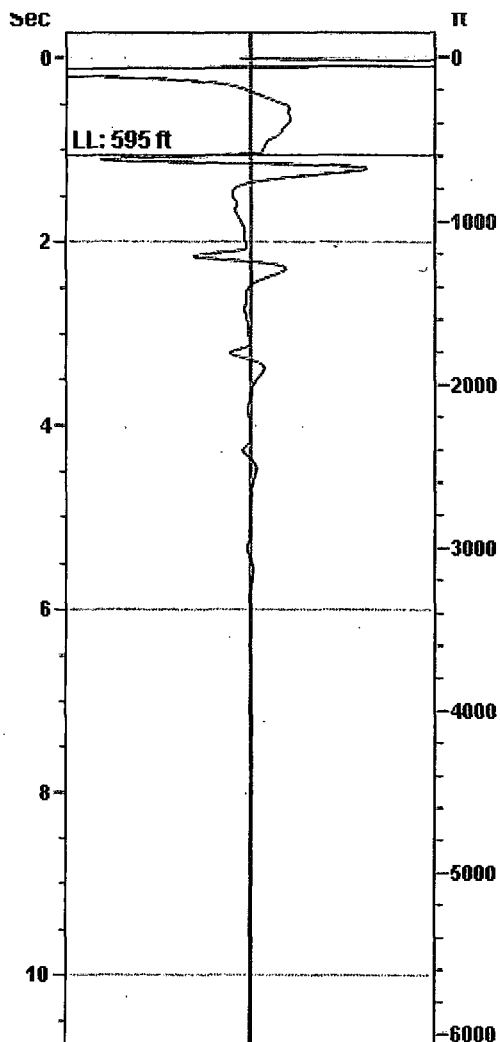
595 ft

Fluid Above Pump

5335 ft

Gas Free Above Pump

5335 ft



Production

Date Entered 09/26/14

	Current	Potential	
Oil	**	**	BBL/D
Water	**	**	BBL/D
Gas	**	**	Mscf/D

IPR Method Vogel

Producing Efficiency 0.00%

Casing Pressure

Pressure -0.3 psi (g)

Annular Gas Flow

Gas Flow 0.1 Mscf/D

Fluid Properties

% Liquid Above Pump 100.00%

% Liquid Below Pump **

Wellbore Pressures

PIP 1605.1 psi (g) @ 5930 ft

PBHP 1597.1 psi (g) @ 5900 ft

SBHP **

Depths

Pump Intake Depth 5930 ft

Formation Depth 5900 ft

Sensor Serial No.

WG Unknown

Acoustic Velocity

Acoustic Velocity

1126 ft/s

Joints Per Sec.

17.76 Jts/sec

Joints To Liquid

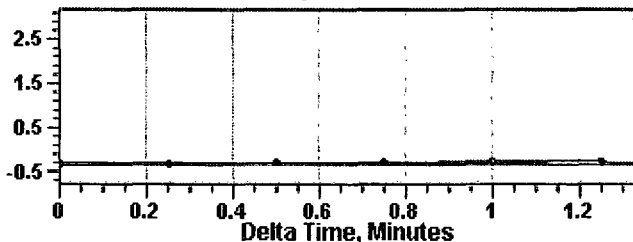
18.75 Jts

Gas Gravity

1.0000 Air = 1

Entered From Known Acoustic Velocity

Casing Pressure Buildup



Casing Pressure

-0.3 psi (g)

Buildup

0.1 psi (g)

Buildup Time

1 min 15 sec

Gas Gravity

1.0000 Air = 1

Comments and Recommendations

100 psi casing shot - Casing Fluid Level Shot w/ 0 psi well pressure. Acoustic velocity of air assumed to be 1126 ft/sec.

Echometer Company
5001 Ditto Lane
Wichita Falls, TX 76302
(940) 767-4334
info@echometer.com