

UNITED STATES
DEPARTMENT OF THE INTERIOR
BUREAU OF LAND MANAGEMENT

RECEIVED

MAY 27 2015

FORM APPROVED
OMB No. 1004-0137
Expires: July 31, 2010

SUNDRY NOTICES AND REPORTS ON WELLS
Do not use this form for proposals to drill or to re-enter an abandoned well. Use Form 3160-3 (APD) for such proposals.

SUBMIT IN TRIPLICATE - Other instructions on page 2.

1. Type of Well

☐

Oil Well

☒

Gas Well

☐

Other

2. Name of Operator

Burlington Resources Oil & Gas Company LP

3a. Address

PO Box 4289, Farmington, NM 87499

3b. Phone No. (include area code)

(505) 326-9700

4. Location of Well (Footage, Sec., T., R., M., or Survey Description)

Surface **UNIT P (SESE), 1100' FSL & 940' FEL, Sec. 13, T32N, R08W**

Bottomhole **see below**

5. Lease Serial No.

NM-6892

6. If Indian, Allottee or Tribe Name

7. If Unit of CA/Agreement, Name and/or No.

8. Well Name and No.

Reese Mesa 101H

9. API Well No.

30-045-26977

10. Field and Pool or Exploratory Area

Basin Fruitland Coal

11. Country or Parish, State

San Juan, New Mexico

12. CHECK THE APPROPRIATE BOX(ES) TO INDICATE NATURE OF NOTICE, REPORT OR OTHER DATA

TYPE OF SUBMISSION

☒ Notice of Intent

☐ Subsequent Report

☐ Final Abandonment Notice

TYPE OF ACTION

☐ Acidize

☐ Alter Casing

☐ Casing Repair

☐ Change Plans

☐ Convert to Injection

☐ Deepen

☐ Fracture Treat

☐ New Construction

☒ Plug and Abandon

☐ Plug Back

☐ Production (Start/Resume)

☐ Reclamation

☐ Recomplete

☐ Temporarily Abandon

☐ Water Disposal

☐ Water Shut-Off

☐ Well Integrity

☐ Other

13. Describe Proposed or Completed Operation: Clearly state all pertinent details, including estimated starting date of any proposed work and approximate duration thereof.

If the proposal is to deepen directionally or recompleate horizontally, give subsurface locations and measured and true vertical depths of all pertinent markers and zones. Attach the bond under which the work will be performed or provide the Bond No. on file with BLM/BIA. Required subsequent reports must be filed within 30 days following completion of the involved operations. If the operation results in a multiple completion or recompleation in a new interval, a Form 3160-4 must be filed once Testing has been completed. Final Abandonment Notices must be filed only after all requirements, including reclamation, have been completed and the operator has determined that the site is ready for final inspection.)

Bottomhole A: 2357' FNL & 1213' FEL, Sec. 13, T32N, 08W

Bottomhole B: 1005' FNL & 1477' FEL, Sec. 13, T32N, 08W

**Notify NMOCD 24 hrs
prior to beginning
operations**

OIL CONS. DIV DIST. 3

JUN 03 2015

Burlington Resources requests permission to P&A the subject wellbore per the attached procedure, current & proposed wellbore schematic. The Pre-Onsite Disturbance visit was held on 5/8/15 with Bob Switzer. The re-vegetation plan is attached. A closed loop system will be utilized for this P&A.

**SEE ATTACHED FOR
CONDITIONS OF APPROVAL**

**BLM'S APPROVAL OR ACCEPTANCE OF THIS
ACTION DOES NOT RELIEVE THE LESSEE AND
OPERATOR FROM OBTAINING ANY OTHER
AUTHORIZATION REQUIRED FOR OPERATIONS
ON FEDERAL AND INDIAN LANDS**

14. I hereby certify that the foregoing is true and correct. Name (Printed/Typed)

Arleen White

Staff Regulatory Technician

Title

Signature

Arleen White

Date

5/26/15

THIS SPACE FOR FEDERAL OR STATE OFFICE USE

Approved by

Troy Salvess

Title

PE

Date

5/29/2015

Conditions of approval, if any, are attached. Approval of this notice does not warrant or certify that the applicant holds legal or equitable title to those rights in the subject lease which would entitle the applicant to conduct operations thereon.

Office

FEO

Title 18 U.S.C. Section 1001 and Title 43 U.S.C. Section 1212, make it a crime for any person knowingly and willfully to make to any department or agency of the United States any false, fictitious or fraudulent statements or representations as to any matter within its jurisdiction.

NMOCD

rtlc 7

ConocoPhillips
REESE MESA 101H
Expense - P&A

Lat 36° 58' 40.656" N

Long 107° 37' 14.952" W

PROCEDURE

This project requires the use of an A-Plus steel tank to handle waste fluids circulated from the well and cement wash up.

1. Hold pre-job safety meeting. Comply with all NMOCD, BLM, and COPC safety and environmental regulations. Test rig anchors prior to moving in rig. Before RU, run WL remove downhole equipment. If an obstruction is found, set a locking-3-slip-stop in the tubing.

2. MIRU workover rig. Check casing, tubing, and bradenhead pressures and record them in Wellview. If there is pressure on the BH, contact the Wells Engineer.

3. Remove existing piping on casing valve. RU blow lines from casing valves and begin blowing down casing pressure. Kill well as necessary. Ensure well is dead or on a vacuum.

4. ND wellhead and NU BOPE. Pressure and function test BOP to 250 psi low and 1000 psi over SICP high to a maximum of 2000 psi held and charted for 10 minutes as per COP Well Control Manual. PU and remove tubing hanger

5. TOOH with tubing (per pertinent data sheet).

Tubing size: 2-3/8", 4.7# J-55 EUE

Set Depth: 3,832'

KB: 13'

6. PU 6-1/4" bit and watermelon mill and round trip as deep as possible above liner at 3,415'.

7. PU 7" CR on tubing, and set at 3,365'. Pressure test tubing to 1000 psi. Sting out of CR. Load hole, and pressure test casing to 800 psi. If casing does not test, then spot or tag subsequent plugs as appropriate. POOH w/ tubing.

8. RU wireline and run CBL with 500 psi on casing from CR to surface to identify TOC. Adjust plugs as necessary for new TOC.

All cement volumes use 100% excess outside pipe and 50' excess inside pipe. The stabilizing wellbore fluid will be 8.3 ppg, sufficient to balance all exposed formation pressures. All cement will be ASTM Class B mixed at 15.6 ppg with a 1.18 cf/sk yield.

9. Plug 1 (Intermediate Shoe, Liner Top, Pictured Cliffs, Fruitland, and Perforations, 3,258-3,365', 31 Sacks Class B Cement)

Mix 31 sx Class B cement and spot a balanced plug inside the casing to cover the intermediate casing shoe, liner top, Pictured Cliffs and Fruitland formation tops, and perforations. PUH.

10. Plug 2 (Kirtland and Ojo Alamo Formation Tops, 2,918-3,147', 55 Sacks Class B Cement)

Mix 55 sx Class B cement and spot a balanced plug inside the casing to cover the Kirtland and Ojo Alamo formation tops. PUH.

11. Plug 3 (Nacimiento Formation Top, 1,188-1,288', 30 Sacks Class B Cement)

Mix 30 sx Class B cement and spot a balanced plug inside the casing to cover the Nacimiento formation top. POOH.

12. Plug 4 (Surface Casing Shoe and Surface, 0-266', 115 Sacks Class B Cement)

RU WL and perforate 4 big hole charge (if available) squeeze holes at 266'. TOOH and RD wireline. Observe well for 30 minutes per BLM regulations. RU pump, close blind rams and establish circulation out bradenhead with water. Circulate BH clean. TIH with 7" CR and set at 216'. Mix 63 sx Class B cement and squeeze until good cement returns to surface out BH valve. Shut BH valve and squeeze to max 200 psi. Sting out of CR and reverse circulate cement out of tubing. TOOH and LD stinger. TIH with open ended tubing to 216'. Mix 52 sx Class B cement and pump inside plug. TOOH and LD Tubing. SI well and WOC.

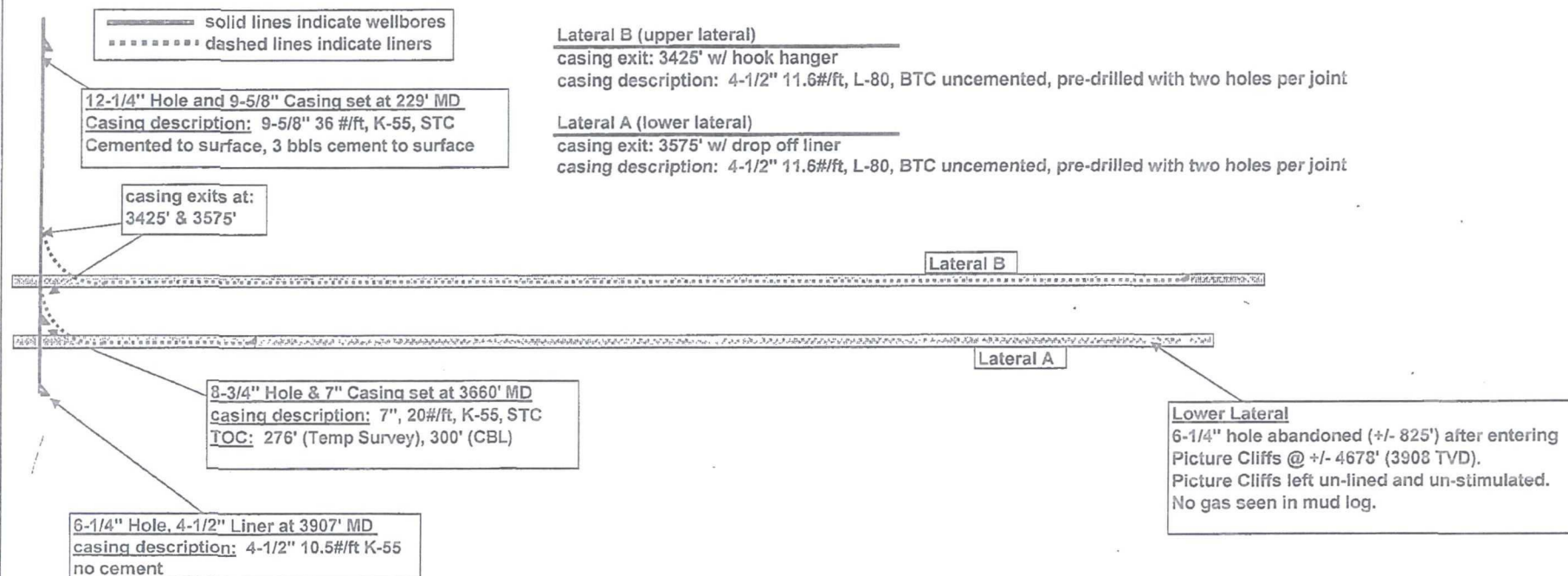
13. Nipple down BOP and cut off casing below the casing flange. Install P&A marker with cement to comply with regulations. Rig down, move off location, cut off anchors, and restore location.

Reese Mesa 101 Lateral

GL 7033'
KB 7048' (Aztec 730)

Surface location	State of New Mexico, San Juan County
Lateral B (upper lateral), beginning of prod. interval	T32N, R08W, Section 13, 1100' FSL, 940' FEL
Lateral B (upper lateral), end of prod. interval	T32N, R08W, Section 13, 1354' FSL, 985' FEL
Lateral B (upperlateral), TD	T32N, R08W, Section 13, 1483' FNL, 1393' FEL
Lateral A (lower lateral), beginning of prod. interval	T32N, R08W, Section 13, 1005' FNL, 1477' FEL
Lateral A (lower lateral), end of prod. interval	T32N, R08W, Section 13, 1452' FSL, 997' FEL
Picture Cliffs Top	T32N, R08W, Section 13, 1960' FSL, 1078' FEL
Lateral A (lower lateral), TD	T32N, R08W, Section 13, 1998' FSL, 1085' FEL
	T32N, R08W, Section 13, 2357' FNL, 1213' FEL

MD ft	TVD ft	
NA	NA	
3854.1'	3707.5'	top of perf'd pipe
6253.9'	3685.8'	bottom of perf'd pipe.
6801'	3697'	TD
4115.5'	3898.3'	top of perf'd pipe
4638.6'	3906.3'	bottom of perf'd pipe, set 40' MD above coal bottom
4678'	3908.3'	mud logger's interpretation of PC top
5503'	3882'	TD



REESE MESA #101H

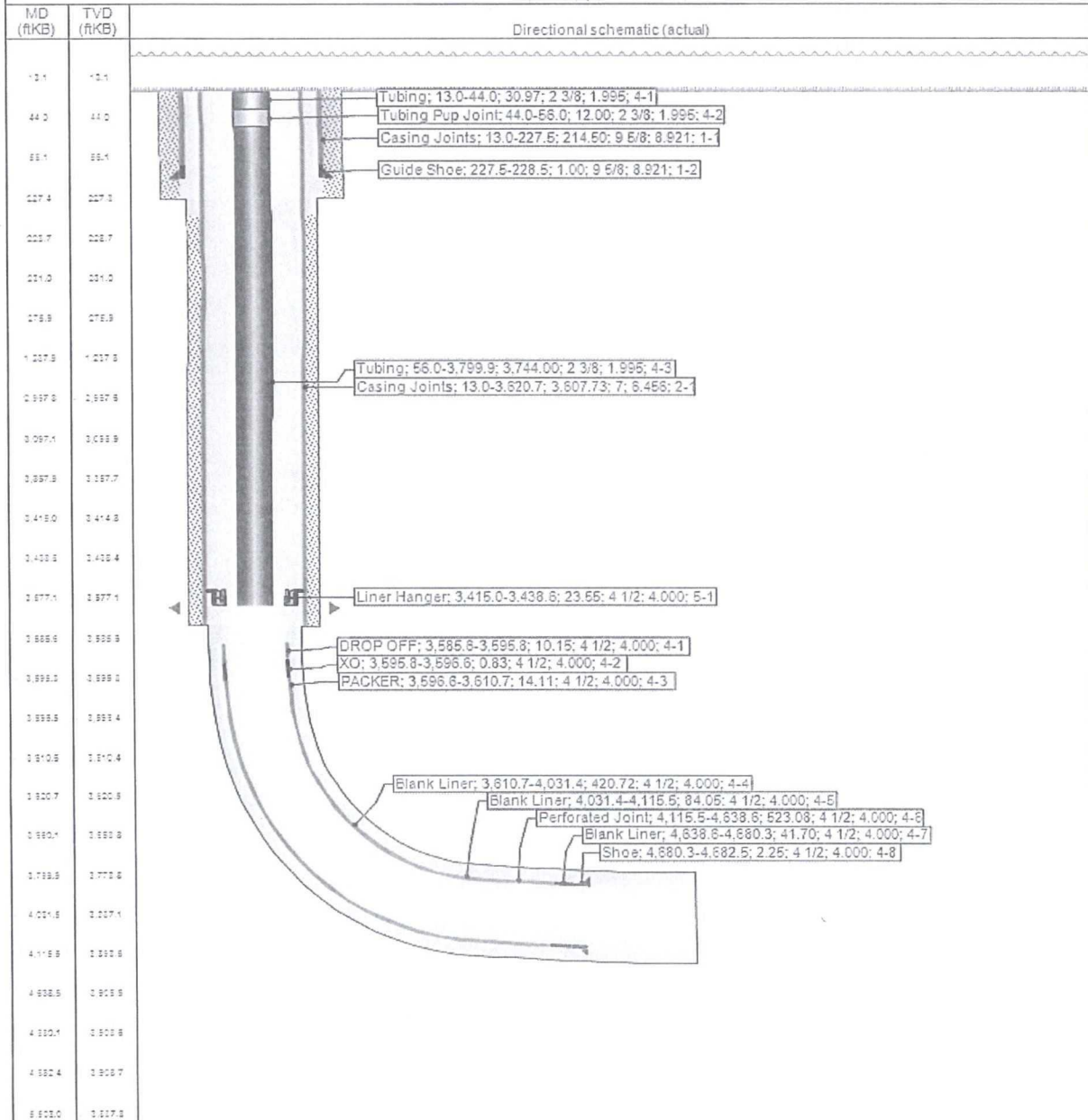


Basic - Schematic - Current

REESE MESA #101H

District NORTH	Field Name BASIN (FRUITLAND COAL) #3046	API / UWI 3004526977	County SAN JUAN	State/Province NEW MEXICO
Original Spud Date 7/16/1988	Surface Legal Location 013-032N-008W-P	East/West Distance (ft) 940.00	East/West Reference FEL	North/South Distance (ft) 1,100.00
North/South Reference FSL				

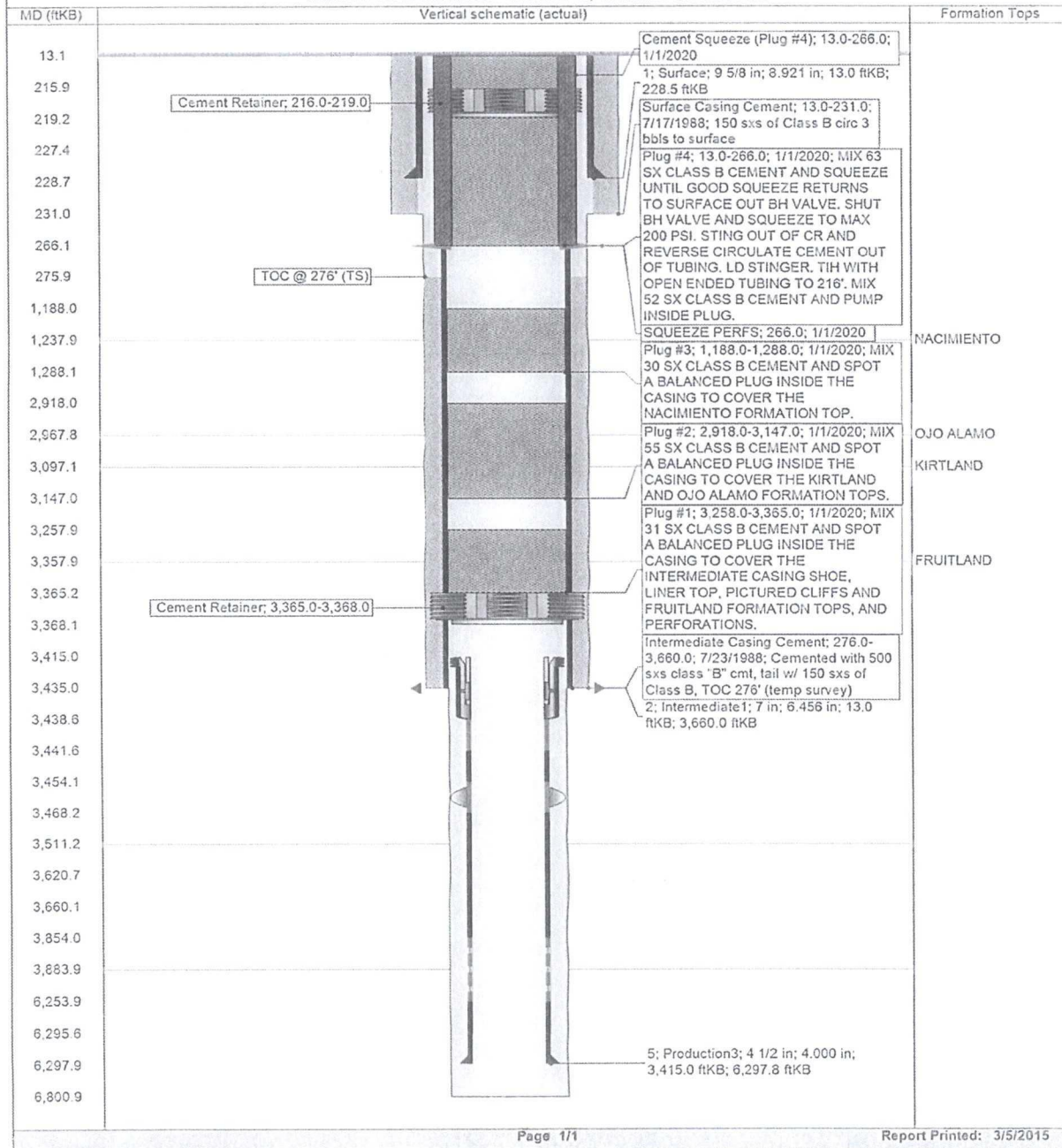
MULTIPLE LATERALS - RE LAT A, 3/5/2015 10:23:22 AM



Note: Directional schematic does not correlate to other tracks.

District NORTH	Field Name BASIN (FRUITLAND COAL) #3046	API / UWI 3004526977	County SAN JUAN	State/Province NEW MEXICO
Original Spud Date 7/16/1988	Surface Legal Location 013-032N-008W-P	East/West Distance (ft) 940.00	East/West Reference FEL	North/South Distance (ft) 1,100.00
			North/South Reference FSL	

MULTIPLE LATERALS - RE LAT B, 1/1/2020 8:00:00 AM



UNITED STATES DEPARTMENT OF THE INTERIOR
BUREAU OF LAND MANAGEMENT
FARMINGTON DISTRICT OFFICE
6251 COLLEGE BLVD.
FARMINGTON, NEW MEXICO 87402

Attachment to notice of
Intention to Abandon:

Re: Permanent Abandonment
Well: Reese Mesa #101H

CONDITIONS OF APPROVAL

1. Plugging operations authorized are subject to the attached "General Requirements for Permanent Abandonment of Wells on Federal and Indian Lease."
2. Farmington Office is to be notified at least 24 hours before the plugging operations commence (505) 564-7750.
3. The following modifications to your plugging program are to be made:
 - a) Bring the top of plug #2 to **2681 ft.** to cover the Kirtland and Ojo Alamo tops. Adjust cement volume accordingly.
 - b) Set plug #3 (**1532-1432**) ft. to cover the Nacimiento top. **BLM picks top of Nacimiento at 1482 ft.**

Operator will run a CBL to verify cement top. Submit the electronic copy of the log for verification to the following addresses: tsalyers@blm.gov Brandon.Powell@state.nm.us

You are also required to place cement excesses per 4.2 and 4.4 of the attached General Requirements.

Office Hours: 7:45 a.m. to 4:30 p.m.