

JUL 22 2015

DISTRICT I

1625 N. French Dr., Hobbs, N.M. 88240
Phone: (575) 393-6181 Fax: (575) 393-0720

DISTRICT II

811 S. First St., Artesia, N.M. 88210
Phone: (575) 746-1245 Fax: (575) 746-0720

DISTRICT III

1000 Rio Brazos Rd., Artec, N.M. 87410
Phone: (505) 334-6178 Fax: (505) 334-6170

DISTRICT IV

1220 S. St. Francis Dr., Santa Fe, N.M. 87505
Phone: (505) 476-3480 Fax: (505) 476-3482State of New Mexico
Energy, Minerals & Natural Resources DepartmentForm C-102
Revised August 1, 2011Submit one copy to appropriate
District Office

OIL CONSERVATION DIVISION

1220 South St. Francis Dr.
Santa Fe, NM 87505☒ AMENDED REPORT

WELL LOCATION AND ACREAGE DEDICATION PLAT

¹ API Number 30-039-31309	² Pool Code 39189	³ Pool Name WEST LINDRITH GALLUP DAKOTA
⁴ Property Code 314743	⁵ Property Name Many Canyons 24-03 8	⁶ Well Number 4H
⁷ OGRID No. 162928	⁸ Operator Name ENERGEN RESOURCES CORPORATION	⁹ Elevation 6877.9

¹⁰ Surface Location

UL or lot no.	Section	Township	Range	Lot Idn	Feet from the	North/South line	Feet from the	East/West line	County
P	8	24N	3W		1230'	SOUTH	716'	EAST	RIO ARriba

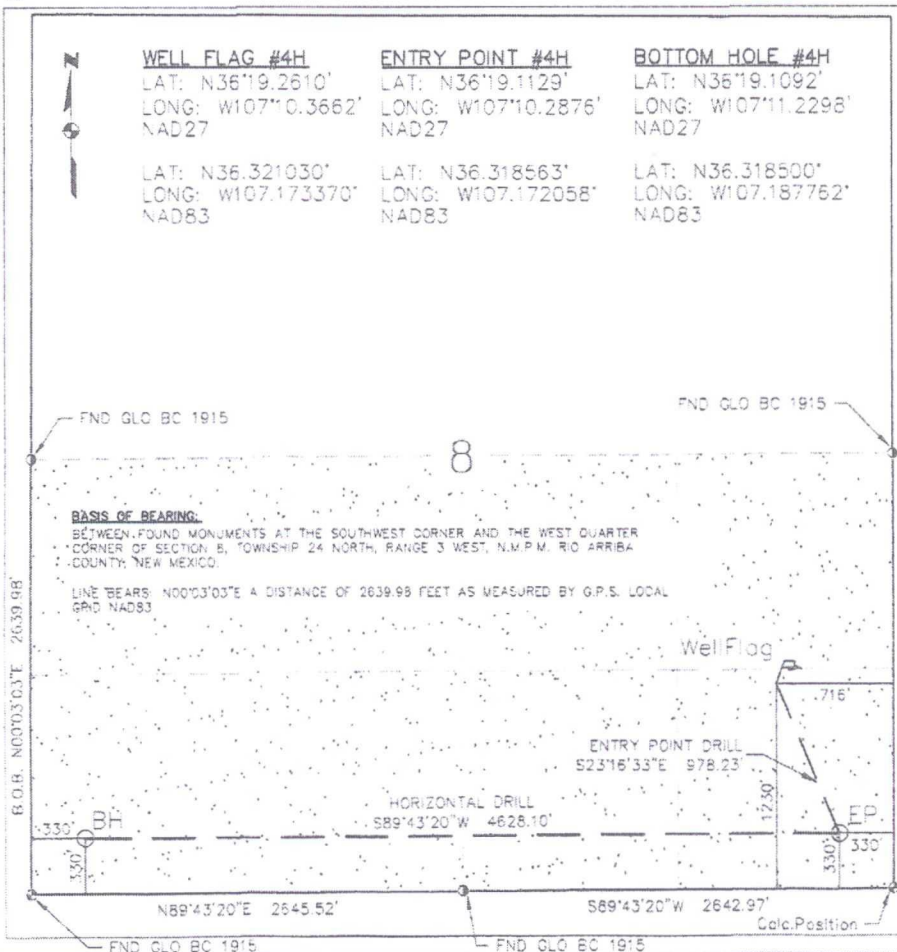
¹¹ Bottom Hole Location If Different From Surface

UL or lot no.	Section	Township	Range	Lot Idn	Feet from the	North/South line	Feet from the	East/West line	County
M	8	24N	3W		330'	SOUTH	330'	WEST	RIO ARriba

¹² Dedicated Acres S/2 SEC 8 320 ACRES	PROJECT AREA	¹³ Joint or Infill	¹⁴ Consolidation Code	¹⁵ Order No.
---	--------------	-------------------------------	----------------------------------	-------------------------

NO ALLOWABLE WILL BE ASSIGNED TO THIS COMPLETION UNTIL ALL INTERESTS HAVE BEEN CONSOLIDATED
OR A NON-STANDARD UNIT HAS BEEN APPROVED BY THE DIVISION

16

¹⁷ OPERATOR CERTIFICATION

I hereby certify that the information contained herein is true and complete to the best of my knowledge and belief, and that this organization either owns a working interest or unleased mineral interest in the land including the proposed bottom hole location or has a right to drill this well at this location pursuant to a contract with an owner of such a mineral or working interest, or to a voluntary pooling agreement or a compulsory pooling order heretofore entered by the division.

Anna Stoltz 5-12-15
Signature DateAnna Stoltz
Printed Nameastoltz@energen.com
E-mail Address

SURVEYOR CERTIFICATION

I hereby certify that the well location shown on this plat was plotted from field notes of actual surveys made by me or under my supervision, and that the same is true and correct to the best of my belief.

MAY 8, 2015
Date of Survey

Signature and Seal of Professional Surveyor

GLEN W. RUSSELL
Professional Surveyor
New MexicoGLEN W. RUSSELL
Certificate Number 15703

AV