

Submit 1 Copy To Appropriate District Office

District I - (575) 393-6161

1625 N. French Dr., Hobbs, NM 88240

District II - (575) 748-1283

811 S. First St., Artesia, NM 88210

District III - (505) 334-6178

1000 Rio Brazos Rd., Aztec, NM 87410

District IV - (505) 476-3460

1220 S. St. Francis Dr., Santa Fe, NM

87505

State of New Mexico  
Energy, Minerals and Natural Resources

OIL CONSERVATION DIVISION  
1220 South St. Francis Dr.  
Santa Fe, NM 87505

Form C-103  
Revised July 18, 2013

<b>SUNDRY NOTICES AND REPORTS ON WELLS</b> (DO NOT USE THIS FORM FOR PROPOSALS TO DRILL OR TO DEEPEN OR PLUG BACK TO A DIFFERENT RESERVOIR. USE "APPLICATION FOR PERMIT" (FORM C-101) FOR SUCH PROPOSALS.)		WELL API NO. 30-047-35558
1. Type of Well: Oil Well <input checked="" type="checkbox"/> Gas Well <input type="checkbox"/> Other <input type="checkbox"/>		5. Indicate Type of Lease STATE <input checked="" type="checkbox"/> FEE <input type="checkbox"/>
2. Name of Operator Encana Oil & Gas (USA) Inc.		6. State Oil & Gas Lease No. VO-9132
3. Address of Operator 370 17 <sup>th</sup> Street, Suite 1700, Denver CO 80202		7. Lease Name or Unit Agreement Name Nageezi Unit
4. Well Location Unit Letter <u>A</u> : <u>1223</u> feet from the <u>North</u> line and <u>346</u> feet from the <u>East</u> line Section <u>28</u> Township <u>24N</u> Range <u>9W</u> NMPM San Juan County		8. Well Number 226H
		9. OGRID Number 282327
		10. Pool name or Wildcat Nageezi Unit Hz (Oil) Pool
11. Elevation (Show whether DR, RKB, RT, GR, etc.) 6924' GR		

12. Check Appropriate Box to Indicate Nature of Notice, Report or Other Data

NOTICE OF INTENTION TO:

PERFORM REMEDIAL WORK ☐ PLUG AND ABANDON ☐  
TEMPORARILY ABANDON ☐ CHANGE PLANS ☐  
PULL OR ALTER CASING ☐ MULTIPLE COMPL ☐  
DOWNHOLE COMMINGLE ☐  
CLOSED-LOOP SYSTEM ☐  
OTHER: ☐

SUBSEQUENT REPORT OF:

REMEDIAL WORK ☐ ALTERING CASING ☐  
COMMENCE DRILLING OPNS. ☐ P AND A ☐  
CASING/CEMENT JOB ☐  
OTHER: Unit Well Re-naming ☒

13. Describe proposed or completed operations. (Clearly state all pertinent details, and give pertinent dates, including estimated date of starting any proposed work). SEE RULE 19.15.7.14 NMAC. For Multiple Completions: Attach wellbore diagram of proposed completion or recompletion.

Encana is submitting the following Well Name change and Well Number change for this well per OCD order R-13856, effective 07/01/14. The Well Name and Well Number will change from the Nageezi Unit A28-2409 01H to the Nageezi Unit 226H. The Well Name and Well Number changes were approved by the BLM on 05/27/15 (see previous sundry on Federal form).

OIL CONS. DIV DIST. 3

AUG 05 2015

Spud Date:

N/A

Rig Release Date:

N/A

I hereby certify that the information above is true and complete to the best of my knowledge and belief.

SIGNATURE Holly Hill TITLE Senior Regulatory Analyst DATE July 23, 2015

Type or print name Holly Hill E-mail address: holly.hill@encana.com PHONE: 720-876-5331

**For State Use Only**

APPROVED BY: Amy Funnell TITLE Line Manager II DATE 9-4-15

Conditions of Approval (if any):

District I  
1625 N. French Dr., Hobbs, NM 88240  
Phone (575) 393-6161 Fax: (575) 393-0720  
District II  
811 S. First St., Artesia, NM 88210  
Phone (505) 748-1283 Fax: (575) 748-9720  
District III  
1000 Rio Brazos Road, Aztec, NM 87410  
Phone (505) 334-6178 Fax: (505) 334-6170  
District IV  
1220 S St. Francis Dr., Santa Fe, NM 87505  
Phone (505) 476-3460 Fax: (505) 476-3462

State of New Mexico  
Energy, Minerals & Natural Resources Department  
OIL CONSERVATION DIVISION  
1220 South St. Francis Dr.  
Santa Fe, NM 87505

Form C-102  
Revised August 1, 2011  
Submit one copy to appropriate  
District Office  
☐ AMENDED REPORT

WELL LOCATION AND ACREAGE DEDICATION PLAT

<sup>1</sup> API Number 30043-35558	<sup>2</sup> Pool Code 98080	<sup>3</sup> Pool Name NAGEEZI UNIT HZ (OIL)
<sup>4</sup> Property Code 315244	<sup>5</sup> Property Name NAGEEZI UNIT	<sup>6</sup> Well Number 226H
<sup>7</sup> OGRID No. 282327	<sup>8</sup> Operator Name ENCANA OIL & GAS (USA) INC.	<sup>9</sup> Elevation 6863'

<sup>10</sup> Surface Location

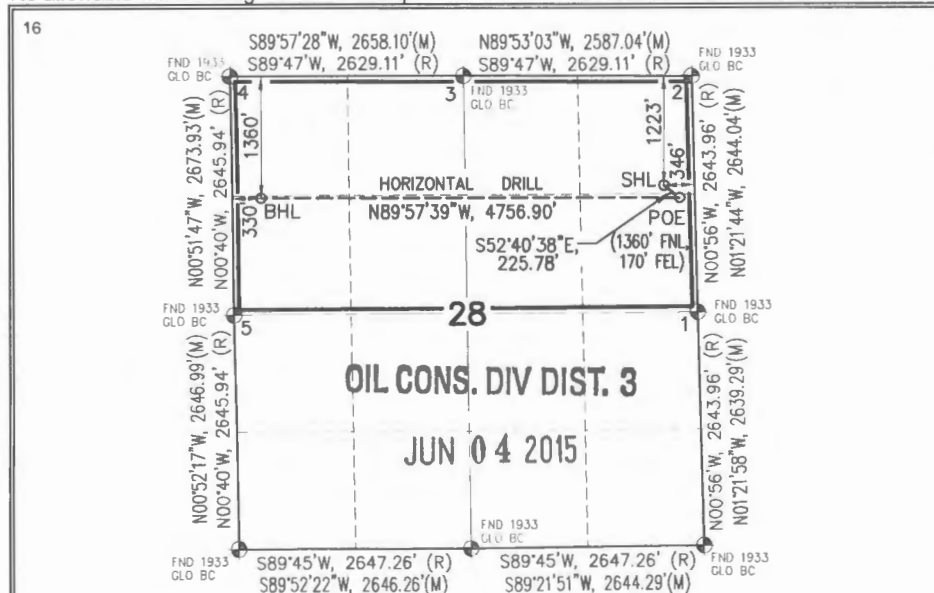
UL or lot no.	Section	Township	Range	Lot Idn	Feet from the	North/South line	Feet from the	East/West Line	County
A	28	24N	9W		1223	NORTH	346	EAST	SAN JUAN

<sup>11</sup> Bottom Hole Location If Different From Surface

UL or lot no.	Section	Township	Range	Lot Idn	Feet from the	North/South line	Feet from the	East/West Line	County
E	28	24N	9W		1360	NORTH	330	WEST	SAN JUAN

<sup>12</sup> Dedicated Acres PROJECT AREA PENETRATED SPACING UNIT: N/2 Sec. 28, 320.00 acres UNDIVIDED UNIT: 9,135.51 acres, S/2 of Sec 21-23, All of Sec 26-28, 33-35, T24N R9W; All of Sec 1-4; E/2 of Sec 5; All of Sec 9-10 & NW/4 of Sec 11, T23N R9W	<sup>13</sup> Joint or Infill	<sup>14</sup> Consolidation Code	<sup>15</sup> Order No. R-13856 9135.51 Acres
--	-------------------------------	----------------------------------	--

No allowable will be assigned to this completion until all interests have been consolidated or a non-standard unit has been approved by the division.



**NAGEEZI UNIT 226H WELL**  
**SHL (WELL FLAG)**  
LAT. 36.288977° N (NAD83)  
LONG. 107.786844° W (NAD83)  
LAT. 36.288965° N (NAD27)  
LONG. 107.786229° W (NAD27)  
**POE (POINT OF ENTRY)**  
LAT. 36.288600° N (NAD83)  
LONG. 107.786235° W (NAD83)  
LAT. 36.288588° N (NAD27)  
LONG. 107.785621° W (NAD27)  
**BHL (BOTTOM HOLE LOCATION)**  
LAT. 36.288620° N (NAD83)  
LONG. 107.802370° W (NAD83)  
LAT. 36.288608° N (NAD27)  
LONG. 107.801755° W (NAD27)

**SECTION CORNERS**

- |  |  |
|--|--|
| 1 LAT. 36.285075° N (NAD83)<br>LONG. 107.785559° W (NAD83)<br>LAT. 36.285063° N (NAD27)<br>LONG. 107.784944° W (NAD27) | 4 LAT. 36.292355° N (NAD83)<br>LONG. 107.803556° W (NAD83)<br>LAT. 36.292343° N (NAD27)<br>LONG. 107.802940° W (NAD27) |
| 2 LAT. 36.292334° N (NAD83)<br>LONG. 107.785764° W (NAD83)<br>LAT. 36.292322° N (NAD27)<br>LONG. 107.785149° W (NAD27) | 5 LAT. 36.285013° N (NAD83)<br>LONG. 107.803426° W (NAD83)<br>LAT. 36.285001° N (NAD27)<br>LONG. 107.802811° W (NAD27) |
| 3 LAT. 36.292354° N (NAD83)<br>LONG. 107.794539° W (NAD83)<br>LAT. 36.292343° N (NAD27)<br>LONG. 107.793924° W (NAD27) |  |

(PAGE 1 OF 2)

**17 OPERATOR CERTIFICATION**

I hereby certify that the information contained herein is true and complete to the best of my knowledge and belief, and that this organization either owns a working interest or unleased mineral interest in the land including the proposed bottom hole location or has a right to drill this well at this location pursuant to a contract with an owner of such a mineral or working interest, or to a voluntary pooling agreement or a compulsory pooling order heretofore entered by the division.

Signature: *Shawn Turk* Date: 5/13/15

Shawn Turk

Printed Name

shawn.turk@encana.com

E-mail Address

**18 SURVEYOR CERTIFICATION**

I hereby certify that the well location shown on this plat was plotted from field notes of actual surveys made by me or under my supervision, and that the same is true and correct to the best of my belief.

December 10, 2014

Date of Survey

Signature and Seal of Professional Surveyor:

*Richard L. Mulliken*  
RICHARD L. MULLIKEN  
NEW MEXICO  
16873  
5-7-15  
PROFESSIONAL SURVEYOR  
RICHARD L. MULLIKEN  
Certificate Number 16873

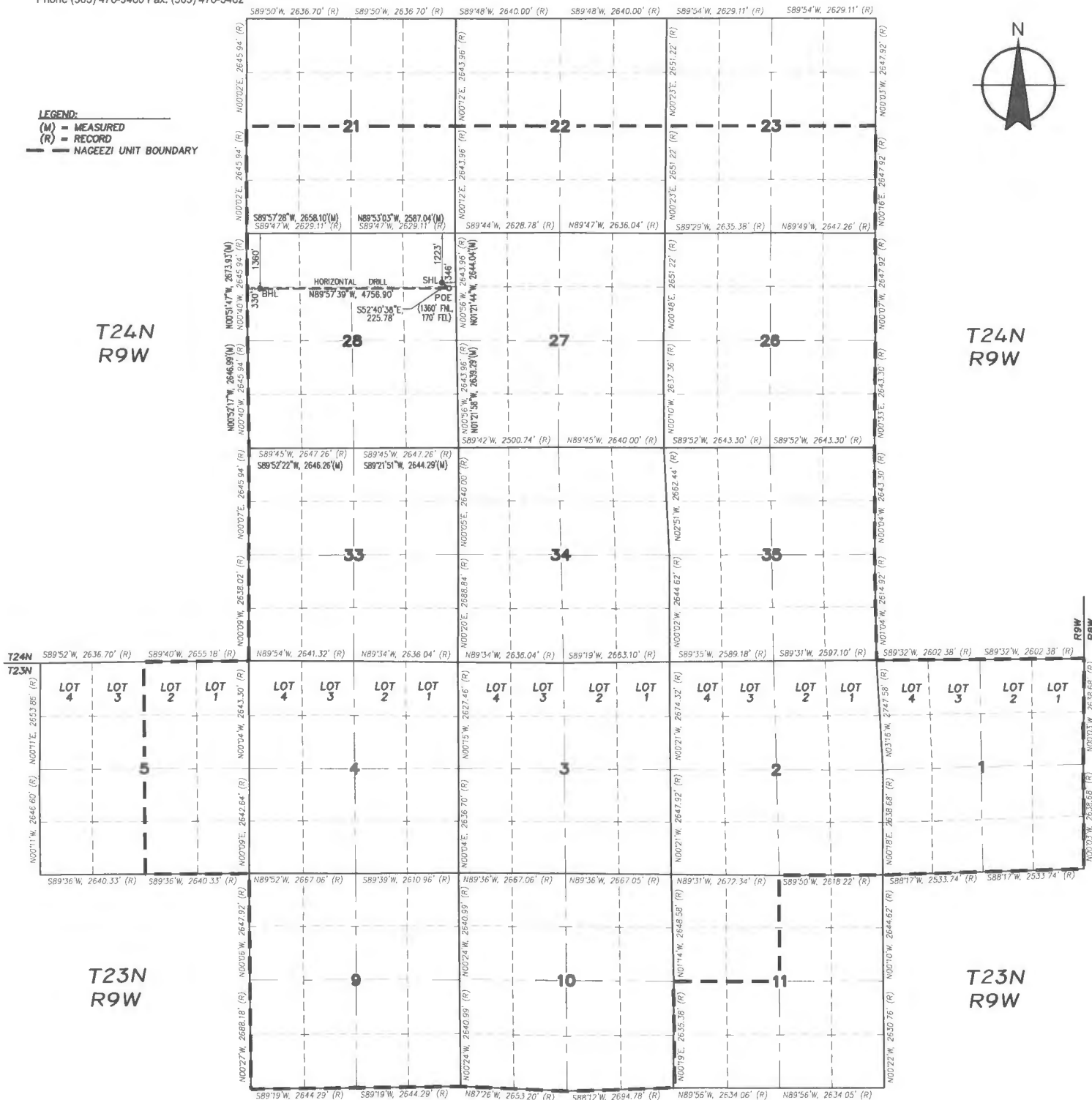
District I  
1625 N. French Dr., Hobbs, NM 88240  
Phone (575) 393-6161 Fax: (575) 393-0720  
District II  
811 S. First St., Artesia, NM 88210  
Phone (575) 748-1283 Fax: (575) 748-9720  
District III  
1000 Rio Brazos Road, Aztec, NM 87410  
Phone (505) 334-6178 Fax: (505) 334-6170  
District IV  
1220 S St. Francis Dr., Santa Fe, NM 87505  
Phone (505) 476-3460 Fax: (505) 476-3462

State of New Mexico  
Energy, Minerals & Natural Resources Department  
OIL CONSERVATION DIVISION  
1220 South St. Francis Dr.  
Santa Fe, NM 87505

Form C-102  
Revised August 1, 2011  
Submit one copy to appropriate  
District Office

☐ AMENDED REPORT

LEGEND:  
(M) = MEASURED  
(R) = RECORD  
--- NAGEEZI UNIT BOUNDARY



SHL (WELL FLAG)  
LAT. 36.288977° N (NAD83)  
LONG. 107.786844° W (NAD83)  
LAT. 36.288965° N (NAD27)  
LONG. 107.786229° W (NAD27)

POE (POINT OF ENTRY)  
LAT. 36.288600° N (NAD83)  
LONG. 107.786235° W (NAD83)  
LAT. 36.288588° N (NAD27)  
LONG. 107.785621° W (NAD27)

BHL (BOTTOM HOLE LOCATION)  
LAT. 36.288620° N (NAD83)  
LONG. 107.80237° W (NAD83)  
LAT. 36.288608° N (NAD27)  
LONG. 107.801755° W (NAD27)