

RECEIVED

UNITED STATES
DEPARTMENT OF THE INTERIOR
BUREAU OF LAND MANAGEMENTFORM APPROVED
OMB No. 1004-0137
Expires: July 31, 2010

5. Lease Serial No.

SF-078740

6. If Indian, Allottee or Tribe Name

Farmington Field Office
Bureau of Land Management

SUNDRY NOTICES AND REPORTS ON WELLS

Do not use this form for proposals to drill or to re-enter an abandoned well. Use Form 3160-3 (APD) for such proposals.

SUBMIT IN TRIPLICATE - Other instructions on page 2.

1. Type of Well

☐ Oil Well☒ Gas Well☐ Other

2. Name of Operator

ConocoPhillips Company

3a. Address

PO Box 4289, Farmington, NM 87499

3b. Phone No. (include area code)

(505) 326-9700

7. If Unit of CA/Agreement, Name and/or No.

San Juan 30-5 Unit

8. Well Name and No.

San Juan 30-5 Unit 27

9. API Well No.

30-039-07792

4. Location of Well (Footage, Sec., T., R., M., or Survey Description)

Surface

UNIT M (SWSW), 1090' FSL & 890' FWL. Sec. 20, T30N, R05W

11. Country or Parish, State

Rio Arriba

New Mexico

12. CHECK THE APPROPRIATE BOX(ES) TO INDICATE NATURE OF NOTICE, REPORT OR OTHER DATA

TYPE OF SUBMISSION

TYPE OF ACTION

☒ Notice of Intent☐ Subsequent Report☐ Final Abandonment Notice☐ Acidize☐ Alter Casing☐ Casing Repair☐ Change Plans☐ Convert to Injection☐ Deepen☐ Fracture Treat☐ New Construction☒ Plug and Abandon☐ Plug Back☐ Production (Start/Resume)☐ Reclamation☐ Recomplete☐ Temporarily Abandon☐ Water Disposal☐ Water Shut-Off☐ Well Integrity☐ Other

13. Describe Proposed or Completed Operation: Clearly state all pertinent details, including estimated starting date of any proposed work and approximate duration thereof.

If the proposal is to deepen directionally or recomplete horizontally, give subsurface locations and measured and true vertical depths of all pertinent markers and zones. Attach the bond under which the work will be performed or provide the Bond No. on file with BLM/BIA. Required subsequent reports must be filed within 30 days following completion of the involved operations. If the operation results in a multiple completion or recompletion in a new interval, a Form 3160-4 must be filed once Testing has been completed. Final Abandonment Notices must be filed only after all requirements, including reclamation, have been completed and the operator has determined that the site is ready for final inspection.)

ConocoPhillips Company requests permission to P&A the subject well per the attached procedure, current & proposed wellbore schematics. The Pre-Disturbance oniste was held on 7/21/2015 with Bob Switzer/BLM. The Re-Vegetation Plan is attached. A closed loop system will be utilized for this P&A.

OIL CONS. DIV DIST. 3

AUG 28 2015

SEE ATTACHED FOR
CONDITIONS OF APPROVALNotify NMOCD 24 hrs
prior to beginning
operationsBLM'S APPROVAL OR ACCEPTANCE OF THIS
ACTION DOES NOT RELIEVE THE LESSEE AND
OPERATOR FROM OBTAINING ANY OTHER
AUTHORIZATION REQUIRED FOR OPERATIONS
ON FEDERAL AND INDIAN LANDS

14. I hereby certify that the foregoing is true and correct. Name (Printed/Typed)

Arleen White

Staff Regulatory Technician

Title

Signature

Arleen White

Date

8/13/15

THIS SPACE FOR FEDERAL OR STATE OFFICE USE

Approved by

Troy Salyers

Title

PE

Date

8/25/2015

Conditions of approval, if any, are attached. Approval of this notice does not warrant or certify that the applicant holds legal or equitable title to those rights in the subject lease which would entitle the applicant to conduct operations thereon.

Office

FFO

Title 18 U.S.C. Section 1001 and Title 43 U.S.C. Section 1212, make it a crime for any person knowingly and willfully to make to any department or agency of the United States any false, fictitious or fraudulent statements or representations as to any matter within its jurisdiction.

(Instruction on page 2)

NMOCD

PC 5

ConocoPhillips
SAN JUAN 30-5 UNIT 27
Expense - P&A

Long 107° 23' 9.607" W

PROCEDURE

This project requires the use of an A-Plus steel tank to handle waste fluids circulated from the well and cement wash up.

1. Hold pre-job safety meeting. Comply with all NMOCD, BLM, and COPC safety and environmental regulations. Test rig anchors prior to moving in rig. **Before RU, run WL to check for downhole equipment. If an obstruction is found, set a locking-3-slip-stop in the tubing.**
2. MIRU workover rig. Check casing, tubing, and bradenhead pressures and record them in Wellview. **If there is pressure on the BH, contact the Wells Engineer.**
3. Remove existing piping on casing valve. RU blow lines from casing valves and begin blowing down casing pressure. Kill well as necessary. Ensure well is dead or on a vacuum.
4. ND wellhead and NU BOPE. Pressure and function test BOP to 250 psi low and 1,000 psi over SICP high to a maximum of 2,000 psi held and charted for 10 minutes as per COP Well Control Manual. PU and remove tubing hanger
5. TOOH with tubing (per pertinent data sheet).

Tubing size: 2-3/8" 4.7# J-55 EUE	Set Depth: 4,954'	KB: 11'
--	--------------------------	----------------
6. PU 6" bit and watermelon mill and round trip as deep as possible above top perforation at 4,336'.
7. PU 7" CR on tubing, and set a 4,286'. Pressure test tubing to 1,000 psi. Sting out of CR. Load hole, and pressure test casing to 800 psi. *If casing does not test, then spot or tag subsequent plugs as appropriate.* POOH w/ tubing.
8. RU wireline and run CBL with 500 psi on casing from CR to surface to identify TOC. *Adjust plugs as necessary for new TOC. Email log copy to Troy Salyers (BLM) at tsalyers@blm.gov and Brandon Powell (NMOCD) at brandon.powell@state.nm.us upon completion of logging operations.*

All cement volumes use 100% excess outside pipe and 50' excess inside pipe. The stabilizing wellbore fluid will be 8.3 ppq, sufficient to balance all exposed formation pressures. All cement will be ASTM Class B mixed at 15.6 ppq with a 1.18 cf/sk yield.

9. Plug 1 (Intermediate casing shoe, Lewis perforations and formation top, 3,309-4,286', 192 Sacks Class B Cement)

Mix 192 sx Class B cement and spot a balanced plug inside the casing to cover the intermediate casing shoe, Lewis perforations and formation top. POQH.

See CoA

10. Plug 2 (Pictured Cliffs formation top, 3,178-3,278', 52 Sacks Class B Cement)

RIH and perforate 3 squeeze holes at 3,278'. Establish injection rate into squeeze holes. RIH with a 7" CR and set at 3,228'. Mix 52 sx Class B cement. Squeeze 23 sx outside the casing, leaving 29 sx inside the casing to cover the Pictured Cliffs formation top. POOH.

See COA

11. Plug 3 (Fruitland, Kirtland and Ojo Alamo formation tops, 2,370- 2,815', 403 Sacks Class B Cement)

RIH and perforate 3 squeeze holes at 2,815' to penetrate both 7" and 9-5/8" casing strings. Establish injection rate into squeeze holes. RIH with a 7" CR and set at 2,765'. Mix 403 sx Class B cement. Squeeze 309 sx outside the production casing, leaving 94 sx inside the production casing to cover the Fruitland, Kirtland, and Ojo Alamo formation tops. POOH.

See COA

12. Plug 4 (Nacimiento formation top, 1,190-1,290', 106 Sacks Class B Cement)

RIH and perforate 3 squeeze holes at 1,290' to penetrate both 7" and 9-5/8" casing strings. Establish injection rate into squeeze holes. RIH with a 7" CR and set at 1,240'. Mix 106 sx Class B cement. Squeeze 77 sx outside the production casing, leaving 29 sx inside the production casing to cover the Nacimiento formation top. POOH.

13. Plug 5 (Surface Plug, 0-355', 279 Sacks Class B Cement)

RU WL and perforate 4 big hole charge (if available) squeeze holes at 355'. TOOH and RD wireline. Observe well for 30 minutes per BLM regulations. RU pump, close blind rams and establish circulation out bradenhead with water. Circulate BH clean. TIH with 7" CR and set at 305'. Mix 211 sx Class B cement and squeeze until good cement returns to surface out BH valve. Shut BH valve and squeeze to max 200 psi. Sting out of CR and reverse circulate cement out of tubing. TOOH and LD stinger. TIH with open ended tubing to 305'. Mix 68 sx Class B cement and pump inside plug. TOOH and LD Tubing. SI well and WOC.

14. Nipple down BOP and cut off casing below the casing flange. Install P&A marker with cement to comply with regulations. Rig down, move off location, cut off anchors, and restore location.

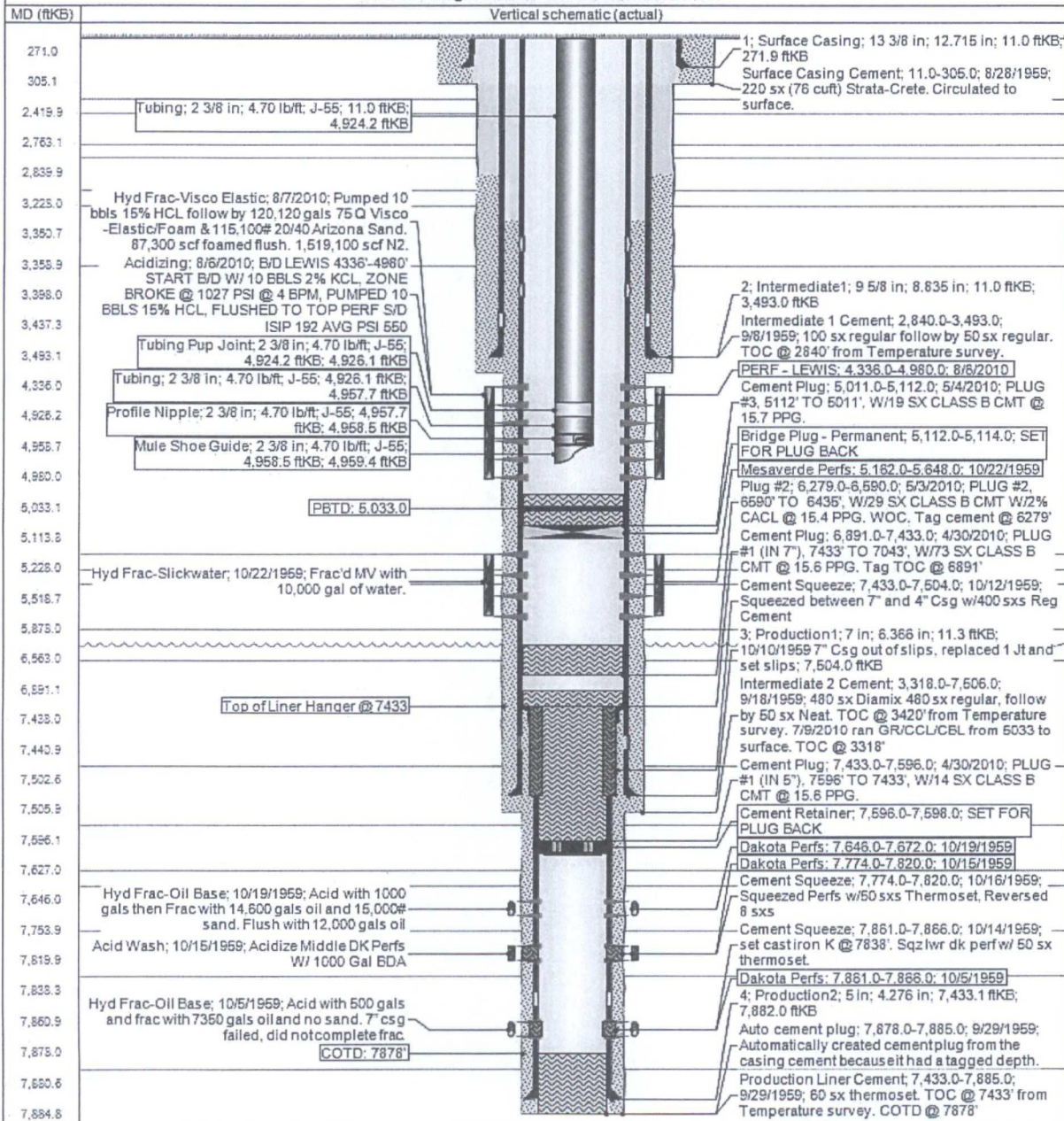


Basic- Schematic - Current

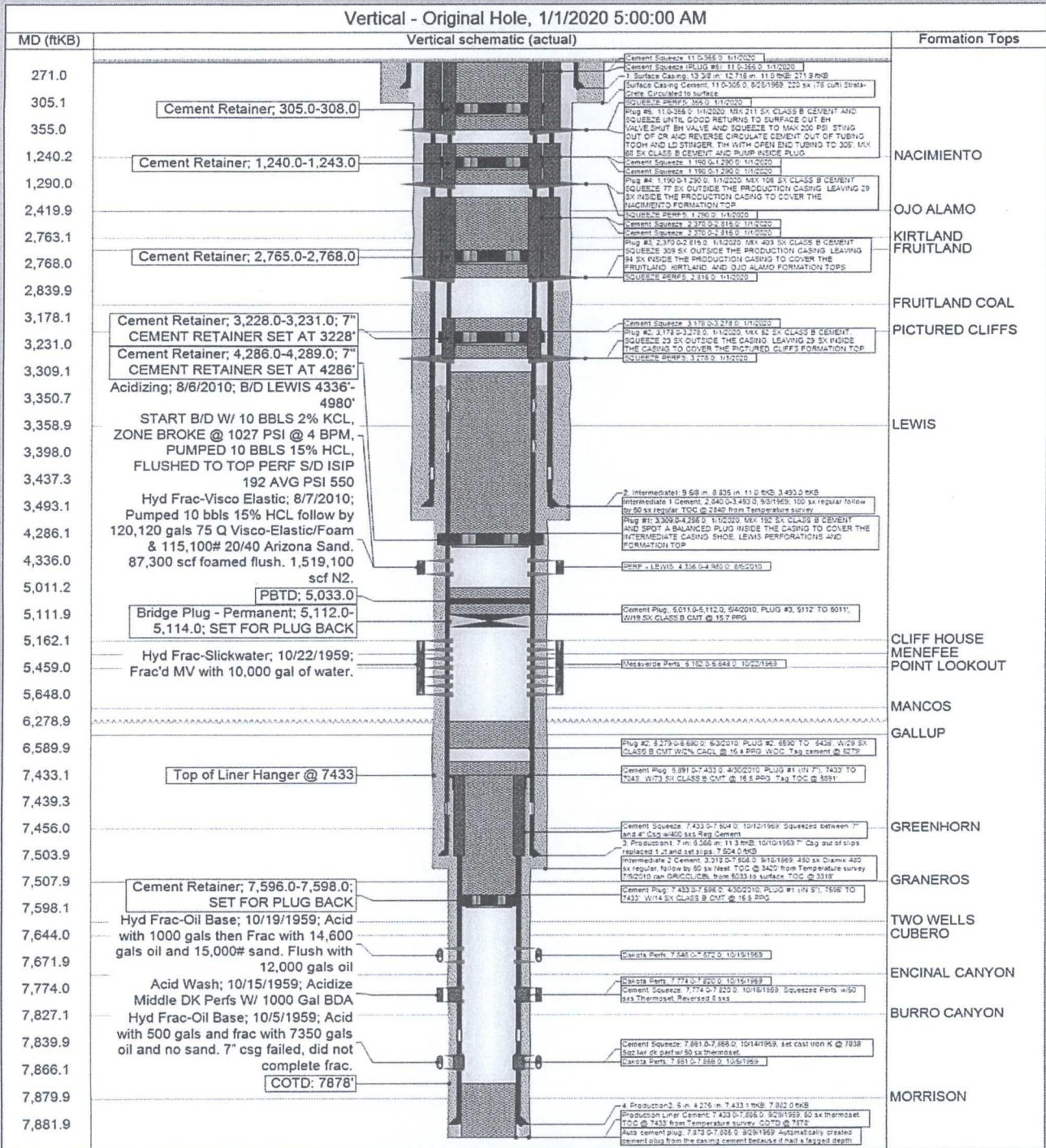
SAN JUAN 30-5 UNIT #27

District NORTH	Field Name MV/DK DUAL	API / UWI 3003907792	County RIO ARRIBA	State/Province NEW MEXICO
Original Spud Date 8/28/1959	Surface Legal Location 020-030N-005W-M	East/West Distance (ft) 890.00	East/West Reference FWL	North/South Distance (ft) 1,090.00
		North/South Reference FSL		

Vertical - Original Hole, 10/31/2014 8:01:27 AM



API/ UWI 3003907792	Surface Legal Location 020-030N-005W-M	Field Name MV/DK DUAL	License No	State/Province NEW MEXICO	Well Configuration Type Vertical
Ground Elevation (ft) 6,296.00	Original KB/RT Elevation (ft) 6,307.00	KB-Ground Distance (ft) 11.00	KB-Casing Flange Distance (ft) 6,307.00	KB-Tubing Hanger Distance (ft)	



UNITED STATES DEPARTMENT OF THE INTERIOR
BUREAU OF LAND MANAGEMENT
FARMINGTON DISTRICT OFFICE
6251 COLLEGE BLVD.
FARMINGTON, NEW MEXICO 87402

Attachment to notice of
Intention to Abandon:

Re: Permanent Abandonment
Well: San Juan 30-5 Unit 27

CONDITIONS OF APPROVAL

1. Plugging operations authorized are subject to the attached "General Requirements for Permanent Abandonment of Wells on Federal and Indian Lease."
2. Farmington Office is to be notified at least 24 hours before the plugging operations commence (505) 564-7750.
3. The following modifications to your plugging program are to be made:
 - a) Set plug #2 (3270-2811) ft. inside/outside the 7" casing to cover the Pictured Cliffs and Fruitland tops. BLM picks top of Fruitland at 2861 ft.
 - b) Set plug #3 (2575-2288) ft. inside/outside the 7" and 9-5/8" casing to cover the Kirtland and Ojo Alamo tops. BLM picks top of Ojo Alamo at 2338 ft.
 - c) Set plug #4 (1238-1138) ft. inside/outside 7" and 9-5/8" casing to cover Nacimiento top. BLM picks top of Nacimiento at 1188 ft.

Operator will run a CBL to verify cement top. Submit the electronic copy of the log for verification to the following addresses: tsalyers@blm.gov Brandon.Powell@state.nm.us

You are also required to place cement excesses per 4.2 and 4.4 of the attached General Requirements.

Office Hours: 7:45 a.m. to 4:30 p.m.