

UNITED STATES  
DEPARTMENT OF THE INTERIOR  
BUREAU OF LAND MANAGEMENT

FORM APPROVED  
OMB No. 1004-0137  
Expires: July 31, 2010

RECEIVED

**SUNDRY NOTICES AND REPORTS ON WELLS**  
**Do not use this form for proposals to drill or to re-enter an abandoned well. Use Form 3160-3 (APD) for such proposals.**

**SUBMIT IN TRIPLICATE** - Other instructions on page 2.

1. Type of Well

☐ Oil Well

☒ Gas Well

☐ Other

2. Name of Operator

**Burlington Resources Oil & Gas Company LP**

3a. Address

**PO Box 4289, Farmington, NM 87499**

3b. Phone No. (include area code)

**(505) 326-9700**

4. Location of Well (Footage, Sec., T., R., M., or Survey Description)

**Surface**

**Unit K (NESW), 1715' FSL & 1785' FWL, Sec. 5, T29N, R04W**

5. Lease Serial No.

**SF-079756-A**

6. If Indian, Allottee or Tribe Name

7. If Unit of CA/Agreement, Name and/or No.

**San Juan 29-4 Unit**

8. Well Name and No.

**San Juan 29-4 Unit 21**

9. API Well No.

**30-039-21453**

10. Field and Pool or Exploratory Area

**Blanco MV / PC**

11. Country or Parish, State

**Rio Arriba**

**New Mexico**

**12. CHECK THE APPROPRIATE BOX(ES) TO INDICATE NATURE OF NOTICE, REPORT OR OTHER DATA**

**TYPE OF SUBMISSION**

☒ Notice of Intent

☐ Subsequent Report

☐ Final Abandonment Notice

**TYPE OF ACTION**

☐ Acidize

☐ Alter Casing

☐ Casing Repair

☐ Change Plans

☐ Convert to Injection

☐ Deepen

☐ Fracture Treat

☐ New Construction

☒ Plug and Abandon

☐ Plug Back

☐ Production (Start/Resume)

☐ Reclamation

☐ Recomplete

☐ Temporarily Abandon

☐ Water Disposal

☐ Water Shut-Off

☐ Well Integrity

☐ Other

13. Describe Proposed or Completed Operation: Clearly state all pertinent details, including estimated starting date of any proposed work and approximate duration thereof. If the proposal is to deepen directionally or recompleate horizontally, give subsurface locations and measured and true vertical depths of all pertinent markers and zones. Attach the bond under which the work will be performed or provide the Bond No. on file with BLM/BIA. Required subsequent reports must be filed within 30 days following completion of the involved operations. If the operation results in a multiple completion or recompleation in a new interval, a Form 3160-4 must be filed once Testing has been completed. Final Abandonment Notices must be filed only after all requirements, including reclamation, have been completed and the operator has determined that the site is ready for final inspection.)

Burlington Resources requests permission to P&A the subject well per the attached procedure, current and proposed wellbore schematics. A Closed Loop system will be utilized for the P&A.

**Notify NMOCD 24 hrs  
prior to beginning  
operations**

**SEE ATTACHED FOR  
CONDITIONS OF APPROVAL**

**OIL CONS. DIV DIST. 3**

**SEP 10 2015**

BLM'S ACCEPTANCE OF THIS  
ACTION IS NOT A GUARANTEE OF THE LESSEE AND  
OPERATOR'S COMPLIANCE WITH ANY OTHER  
APPLICABLE LAWS OR REGULATIONS FOR OPERATIONS  
ON OR NEAR INDIAN LANDS

14. I hereby certify that the foregoing is true and correct. Name (Printed Typed)

**Arleen White**

**Staff Regulatory Technician**

Title

Signature

*Arleen White*

Date

*8/17/15*

**THIS SPACE FOR FEDERAL OR STATE OFFICE USE**

Approved by

*Jack Savage*

Title

*PE*

Date

*9/2/15*

Conditions of approval, if any, are attached. Approval of this notice does not warrant or certify that the applicant holds legal or equitable title to those rights in the subject lease which would entitle the applicant to conduct operations thereon.

Office

*FFO*

Title 18 U.S.C. Section 1001 and Title 43 U.S.C. Section 1212, make it a crime for any person knowingly and willfully to make to any department or agency of the United States any false, fictitious or fraudulent statements or representations as to any matter within its jurisdiction.

(Instruction on page 2)

**NMOCD**

*PE 5*

**ConocoPhillips**  
**SAN JUAN 29-4 UNIT 21**  
**Expense - P&A**

Lat 36° 45' 6.372" N

Long 107° 16' 41.736" W

**PROCEDURE**

**This project requires the use of an A-Plus steel tank to handle waste fluids circulated from the well and cement wash up.**

1. Hold pre-job safety meeting. Comply with all NMOCD, BLM, and COPC safety and environmental regulations. Test rig anchors prior to moving in rig. **Before RU, run WL to remove downhole equipment. If an obstruction is found, set a locking-3-slip-stop in the tubing.**

2. MIRU workover rig. Check casing, tubing, and bradenhead pressures and record them in Wellview. **If there is pressure on the BH, contact the Wells Engineer.**

3. Remove existing piping on casing valve. RU blow lines from casing valves and begin blowing down casing pressure. Kill well as necessary. Ensure well is dead or on a vacuum.

4. ND wellhead and NU BOPE with double rams (2-3/8" pipe and blinds), annular preventer, and offset spool. Function test BOPE per COP Well Control Manual. PU and remove tubing hanger

5. Trip out with short string (per pertinent data sheet).

**Tubing size:** 1.66" OD, 2.4 ppf, connection unknown

**Set Depth:** 4444'

**KB:** 13'

6. Nipple down offset spool. Trip out of hole with long string (per pertinent data sheet). If tubing won't come free, free point and cut above the packer. Nipple down annular preventer.

**Tubing size:** 2-1/16 OD, 3.25 ppf, IJ

**Set Depth:** 6584'

**KB:** 13'

**Liner top at 4484'**

7. PU 2-3/8" work string and 3-7/8" bit and watermelon mill and round trip as deep as possible above top of Baker Model F packer at 4526'.

8. PU 4-1/2" cement retainer on tubing, and set as close to packer as possible (4526')'. Pressure test tubing to 1,000 psi. Sting out of CR. POOH w/ tubing.

9. RU wireline and run CBL with 500 psi on casing from CIBP/CR to surface to identify TOC. *Adjust plugs as necessary for new TOC. Email log copy to Troy Salyers (BLM) at [tsalyers@blm.gov](mailto:tsalyers@blm.gov) and Brandon Powell (NMOCD) at [brandon.powell@state.nm.us](mailto:brandon.powell@state.nm.us) upon completion of logging operations.*

**All cement volumes use 100% excess outside pipe and 50' excess inside pipe. The stabilizing wellbore fluid will be 8.3 ppg, sufficient to balance all exposed formation pressures. All cement will be ASTM Class B mixed at 15.6 ppg with a 1.18 cf/sk yield.**

**10. Plug 1 (Mesa Verde Formation, Mesa Verde Perforations, And Liner Top, 4523-4438', 19 Sacks Class B Cement)**

Mix cement as described above. Spot a plug on top of cement retainer to isolate the Mesa Verde Formation Top and perforations as well as to cover the liner top. Pull out of hole.

**11. Plug 2 (Picture Cliffs Formation Top and Perforations, 4158-4058', 29 Sacks Class B Cement)**

Pick up 7" cement retainer on tubing and set at 4158'. Mix cement as described above and spot a plug on top of the retainer to isolate the Pictured Cliffs Formation top and perforations. Pull up hole.

**12. Plug 3 (Kirtland/Fruitland and Ojo Alamo Formation Tops, 3839-3571', 62 Sacks Class B Cement)**

Mix cement as described above and spot a balanced plug inside casing to isolate the Kirtland/Fruitland and Ojo Alamo Formation Tops. Pull up hole.

**13. Plug 4 (Nacimiento Formation Top, 2271-2171', 29 Sacks Class B Cement)**

Mix cement as described above and spot a balanced plug inside casing to isolate the Nacimiento Formation Top. Pull up hole.

**14. Plug 5 (Surface Plug, 325-0', 73 Sacks Class B Cement)**

Connect the pump line to the bradenhead valve and attempt to pressure test the BH annulus to 300 psi. Note the volume to load. If the BH annulus holds pressure, then establish circulation out casing valve with water. Mix cement and spot balanced plug inside casing from 325' to surface, circulating good cement out casing valve. TOOH and LD tubing. SI well and WOC. If the BH annulus does not test, then perforate at the appropriate depth and attempt to circulate cement to surface, filling the casing and the BH annulus to surface. Shut well in and WOC.

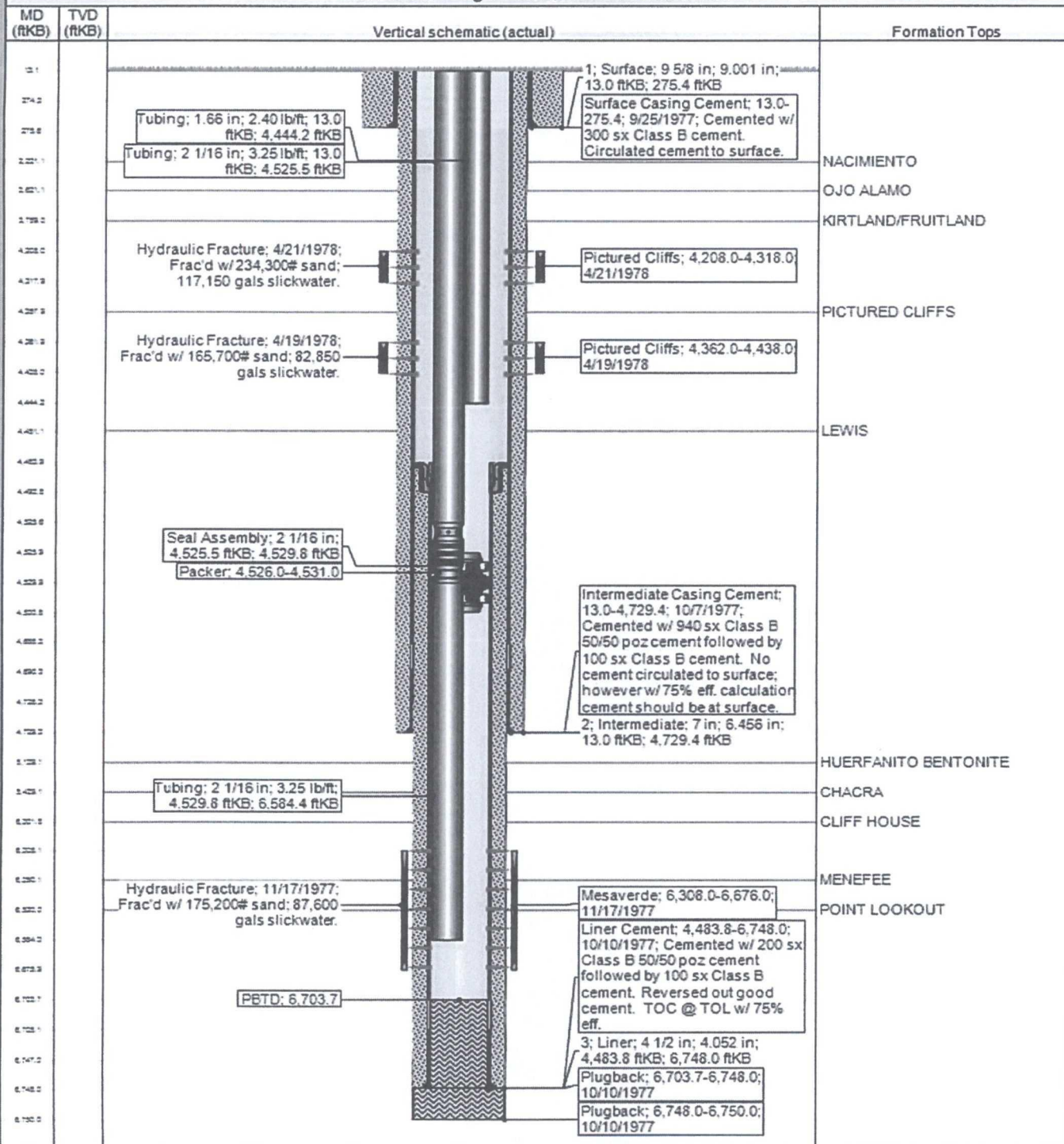
15. Nipple down BOP and cut off casing below the casing flange. Install P&A marker with cement to comply with regulations. Rig down, move off location, cut off anchors, and restore location.



### Current Schematic

API / UWI 3003921453	Surface Legal Location 005-029N-004W-K	Field Name BLANCO MESAVES (PRORATED)	License No.	State/Province NEW MEXICO	Well Configuration Type VERTICAL
Ground Elevation (ft) 7,491.00	Original KB RT Elevation (ft) 7,504.00	KB-Ground Distance (ft) 13.00	KB-Casing Flange Distance (ft)	KB-Tubing Hanger Distance (ft) 7,504.00	

#### VERTICAL - Original Hole, 7/9/2015 7:16:00 AM

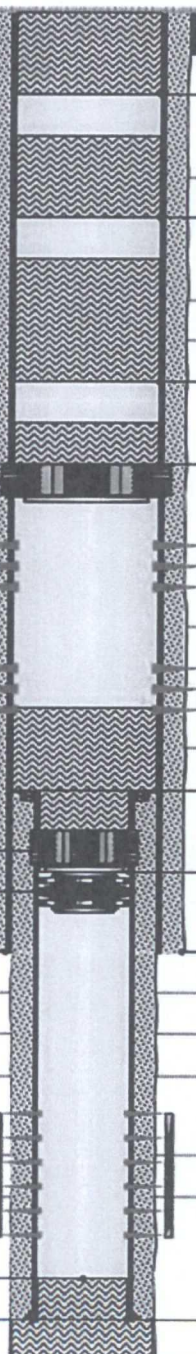




## Schematic - Proposed SAN JUAN 29-4 UNIT #21

District NORTH	Field Name BLANCO MESAVERDE (PRORATED GAS)	API / UWI 3003921453	County RIO ARRIBA	State/Province NEW MEXICO
Original Spud Date 9/25/1977	Surf Loc 005-029N-004W-K	East/West Distance (ft) 1,785.00	East/West Reference FWL	N/S Dist (ft) 1,715.00
North/South Reference FSL				

VERTICAL - Original Hole, 1/1/2020 4:00:00 AM

Vertical schematic (actual)		MD (ftKB)	Formation Tops
1; Surface; 9 5/8 in; 9.001 in; 13.0 ftKB; 275.4 ftKB		13.1	
		275.6	
		325.1	
		2,170.9	
		2,221.1	NACIMIENTO
		2,271.0	
		3,570.9	
		3,621.1	OJO ALAMO
		3,789.0	KIRTLAND/F...
		3,838.9	
		4,058.1	
		4,158.1	
		4,161.1	
		4,208.0	
		4,317.9	
		4,357.9	PICTURED C...
		4,361.9	
		4,438.0	
		4,451.1	LEWIS
		4,483.9	
		4,523.0	
		4,525.9	
		4,530.8	
		4,729.3	
		5,139.1	HUERFANIT...
		5,429.1	CHACRA
		6,301.8	CLIFF HOUSE
		6,308.1	
		6,350.1	MENEFEE
		6,520.0	POINT LOOK...
		6,675.9	
		6,703.7	
		6,748.0	
		6,750.0	

UNITED STATES DEPARTMENT OF THE INTERIOR  
BUREAU OF LAND MANAGEMENT  
FARMINGTON DISTRICT OFFICE  
6251 COLLEGE BLVD.  
FARMINGTON, NEW MEXICO 87402

Attachment to notice of  
Intention to Abandon:

Re: Permanent Abandonment  
Well: San Juan 29-4 Unit #21

CONDITIONS OF APPROVAL

1. Plugging operations authorized are subject to the attached "General Requirements for Permanent Abandonment of Wells on Federal and Indian Lease."

2. Farmington Office is to be notified at least 24 hours before the plugging operations commence (505) 564-7750.

3. The following modifications to your plugging program are to be made:

- a) Set an inside plug (5191-5091) ft. to cover the Chacra top. BLM picks top of Chacra at 5141 ft.
- b) Set plug #3 (4048-3570) ft. to cover the Ojo Alamo, Kirtland, and Fruitland tops. BLM picks top of Fruitland at 3998 ft.
- c) Set plug #4 (2375-2275) ft. to cover the Nacimiento top. BLM picks top of Nacimiento at 2325 ft.

Operator will run a CBL to verify cement top. Submit the electronic copy of the log for verification to the following addresses: [tsalyers@blm.gov](mailto:tsalyers@blm.gov) [Brandon.Powell@state.nm.us](mailto:Brandon.Powell@state.nm.us)

You are also required to place cement excesses per 4.2 and 4.4 of the attached General Requirements.

Office Hours: 7:45 a.m. to 4:30 p.m.