

UNITED STATES
DEPARTMENT OF THE INTERIOR
BUREAU OF LAND MANAGEMENT
APPLICATION FOR PERMIT TO DRILL OR REENTER

FORM APPROVED
OMB No. 1004-0137
Expires March 31, 2007

1a. Type of work: <input checked="" type="checkbox"/> DRILL <input type="checkbox"/> REENTER		5. Lease Serial No. NM-96800
1b. Type of Well: <input type="checkbox"/> Oil Well <input checked="" type="checkbox"/> Gas Well <input type="checkbox"/> Other <input checked="" type="checkbox"/> Single Zone <input type="checkbox"/> Multiple Zone		6. If Indian, Allottee or Tribe Name
2. Name of Operator Dugan Production Corp.		7. If Unit or CA Agreement, Name and No.
3a. Address 709 East Murray Drive, Farmington, NM 87401		8. Lease Name and Well No. Hoss #91
3b. Phone No. (include area code) 505-325-1821		9. API Well No. 30-045-33069
4. Location of Well (Report location clearly and in accordance with any State requirements) At surface 990' FSL and 990' FEL At proposed prod. zone Same as above		10. Field and Pool, or Exploratory Basin Fruitland Coal
14. Distance in miles and direction from nearest town or post office Approx. 13-miles SW of Blanco Trading Post, NM		11. Sec., T. R. M. or Blk. and Survey or Area Sec. 22, T23N, R11W
15. Distance from proposed location to nearest property or lease line, ft. (Also to nearest drg. unit line, if any) 990'	16. No. of acres in lease 1200 Acres	17. Spacing Unit dedicated to this well E/2-320 Acres
18. Distance from proposed location to nearest well, drilling, completed, applied for, on this lease, ft. Approx. 2400'	19. Proposed Depth 650'	20. BLM/BIA Bond No. on file
21. Elevations (Show whether DF, KDB, RT, GL, etc.) GL-6310'	22. Approximate date work will start 7/5/2005	23. Estimated duration 3-days
24. Attachments		

The following, completed in accordance with the requirements of Onshore Oil and Gas Order No.1, shall be attached to this form:

- Well plat certified by a registered surveyor.
- A Drilling Plan.
- A Surface Use Plan (if the location is on National Forest System Lands, the SUPO shall be filed with the appropriate Forest Service Office).
- Bond to cover the operations unless covered by an existing bond on file (see item 20 above).
- Operator certification
- Such other site specific information and/or plans as may be required by the authorized officer.

25. Signature <i>Kurt Fagrelus</i>	Name (Printed/Typed) Kurt Fagrelus	Date 4/28/2005
Title Geology		
Approved by (Signature) <i>D. Mankiewicz</i>	Name (Printed/Typed) D. Mankiewicz	Date 10/19/05
Title AFM	Office PFO	

Application approval does not warrant or certify that the applicant holds legal or equitable title to those rights in the subject lease which would entitle the applicant to conduct operations thereon.
Conditions of approval, if any, are attached.

Title 18 U.S.C. Section 1001 and Title 43 U.S.C. Section 1212, make it a crime for any person knowingly and willfully to make to any department or agency of the United States any false, fictitious or fraudulent statements or representations as to any matter within its jurisdiction.

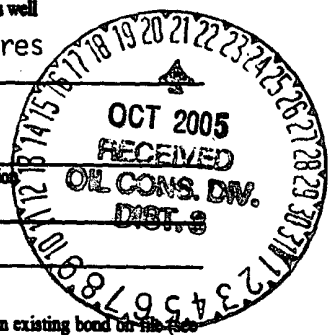
*(Instructions on page 2)

A water based gel-mud will be used to drill surface and production casing hole. Standard 2,000 psi BOP will be used to drill production hole. The Fruitland Coal will be completed from approximately 430' - 480'. The interval will be fractured.

DRILLING OPERATIONS AUTHORIZED ARE
SUBJECT TO COMPLIANCE WITH ATTACHED
"GENERAL REQUIREMENTS".

NMOCD

This action is subject to technical and procedural review pursuant to 43 CFR 3165.3 and appeal pursuant to 43 CFR 3165.4



District I
PO Box 1980, Hobbs, NM 88241-1980

District II
PO Drawer DD, Artesia, NM 88211-0719

District III
1000 Rio Brazos Rd., Aztec, NM 87410

District IV
PO Box 2088, Santa Fe, NM 87504-2088

State of New Mexico
Energy, Minerals & Natural Resources Department

OIL CONSERVATION DIVISION
PO Box 2088
Santa Fe, NM 87504-2088

Form C-102
Revised February 21, 1994
Instructions on back
Submit to Appropriate District Office
State Lease - 4 Copies
Fee Lease - 3 Copies

☐ AMENDED REPORT

WELL LOCATION AND ACREAGE DEDICATION PLAT

*API Number 30-045-33069		*Pool Code 71629	*Pool Name BASIN FRUITLAND COAL
*Property Code 18998	*Property Name HOSS		*Well Number 91
*OGRID No. 006515	*Operator Name DUGAN PRODUCTION CORPORATION		*Elevation 6310'

¹⁰ Surface Location

UL or lot no. P	Section 22	Township 23N	Range 11W	Lot Idn	Feet from the 990	North/South line SOUTH	Feet from the 990	East/West line EAST	County SAN JUAN
---------------------------	----------------------	------------------------	---------------------	---------	-----------------------------	----------------------------------	-----------------------------	-------------------------------	---------------------------

¹¹ Bottom Hole Location If Different From Surface

UL or lot no.	Section	Township	Range	Lot Idn	Feet from the	North/South line	Feet from the	East/West line	County
---------------	---------	----------	-------	---------	---------------	------------------	---------------	----------------	--------

¹² Dedicated Acres 320.0 Acres - (E/2)	¹³ Joint or Infill	¹⁴ Consolidation Code	¹⁵ Order No.
-------------------------------------------------------------	-------------------------------	----------------------------------	-------------------------

NO ALLOWABLE WILL BE ASSIGNED TO THIS COMPLETION UNTIL ALL INTERESTS HAVE BEEN CONSOLIDATED
OR A NON-STANDARD UNIT HAS BEEN APPROVED BY THE DIVISION

¹⁶ 	DUGAN NM-96800	¹⁷ OPERATOR CERTIFICATION I hereby certify that the information contained herein is true and complete to the best of my knowledge and belief. Signature Kurt Fagrelus Printed Name Geology Title 4/28/2005 Date
	22	¹⁸ SURVEYOR CERTIFICATION I hereby certify that the well location shown on this plat was plotted from field notes of actual surveys made by me or under my supervision, and that the same is true and correct to the best of my belief. Survey Date: JANUARY 3, 2005 Signature and Seal of Professional Surveyor JASON C. EDWARDS Certificate Number 15269

EXHIBIT B
OPERATIONS PLAN

Hoss #91

APPROXIMATE FORMATION TOPS:

Kirtland	Surface	Pictured Cliffs	480'
Fruitland	120'	Total Depth	650'

Catch samples every 10 feet from 350 feet to 650 feet.

LOGGING PROGRAM:

Run cased-hole GR-CCL-CNL from total depth to surface.

CASING PROGRAM:

Hole Size	Casing Size	Wt./ft.	Setting Depth	Grade and Condition
12-1/4"	8-5/8"	24#	120'	J-55
7"	5-1/2"	14#	650'	J-55

Plan to drill a 12-1/4" hole and set 120' of 8-5/8" OD, 24#, J-55 surface casing. Then plan to drill a 7" hole to total depth with gel-water mud program to test the Fruitland Coal. 5-1/2", 14#, J-55 production casing will be run and cemented. Cased hole GR-CCL-CNL log will be run. Productive zone will be perforated and fractured. After frac, the well will be cleaned out and production equipment will be installed.

CEMENTING PROGRAM:

Surface: Cement to surface with 70 cf Class B + 2% CaCl₂.
Circulate to surface.

Production Stage-Cement with 60 cf 2% Lodense with
1/4# celloflake/sx followed by 40 cf Class "B" with
1/4# celloflake/sx.
Total cement slurry for production stage is 100 cf.
Circulate cement to surface.

An adequate spacer will be pumped ahead of the cement slurry to help prevent mud contamination of the cement. An adequate number of casing centralizers will be run through usable water zones to ensure that casing is centralized through these zones. The adequate number of centralizers will be determined based on API standards. Centralizers to impart a swirling action around the casing will be used just below and into the base of the lowest usable water zone. These devices will assist mud

displacement, increase cement bonding potential and create an effective hydraulic seal. A chronological log will be kept which records the pump rate, pump pressure, slurry density, and slurry volume for the cement job. The log will be sent to the BLM after completion of the job.

WELLHEAD EQUIPMENT:

Huber 8-5/8"x5-1/2" casing head, 1000# WP, tested to 2000#.
Huber 5-1/2"x2-7/8" tubing head, 1000# WP, tested to 2000#.

BOP and Related Equipment will include for a 2000 psi system:

(Exhibit D)

Annular preventer, double ram, or 2 rams with one being blind and one being a pipe ram.

Kill line (2" minimum)

1 kill line valve (2" minimum)

1 choke line valve

2 chokes

Upper kelly cock valve with handle available

Safety valve and subs to fit all drill string connections in use.

Pressure gauge on choke manifold.

2" minimum choke line.

Fill-up line.

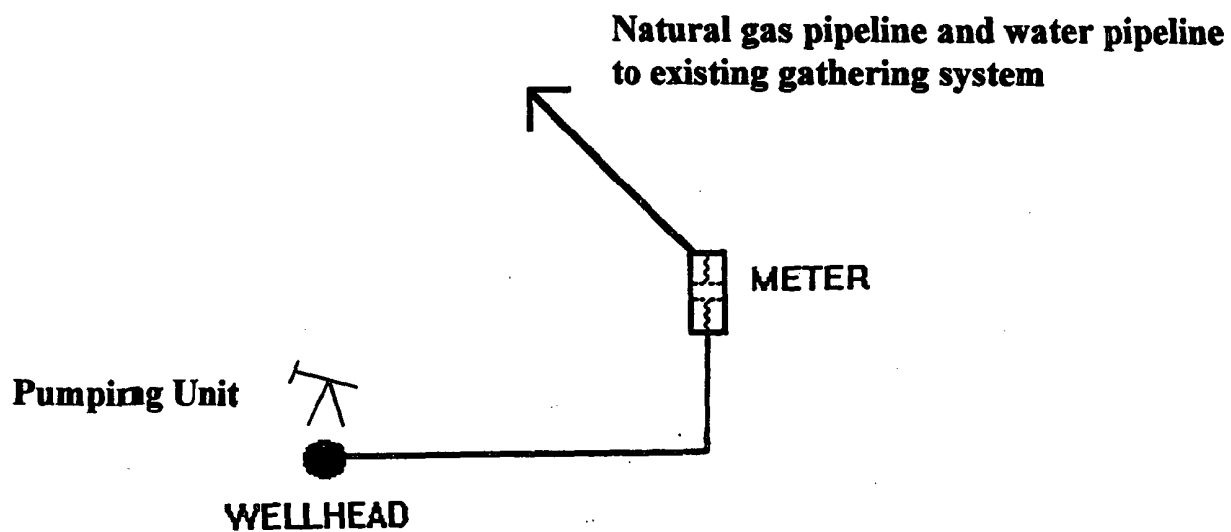
Contacts:

Dugan Prod.Corp. Office & Radio Dispatch: 325-1821

Mark Brown	327-3632 (H)
	320-8247 (M)

Kurt Fagrelus	325-4327 (H)
	320-8248 (M)

John Alexander	325-6927 (H)
	320-1935 (M)



Anticipated Production Facilities

**DUGAN PRODUCTION CORP.
HOSS #91**

Submit 3 Copies To Appropriate District Office
District I
1625 N. French Dr., Hobbs, NM 88240
District II
1301 W. Grand Ave., Artesia, NM 88210
District III
1000 Rio Brazos Rd., Aztec, NM 87410
District IV
1220 S. St. Francis Dr., Santa Fe, NM 87505

State of New Mexico
Energy, Minerals and Natural Resources

Form C-103
March 4, 2004

OIL CONSERVATION DIVISION
1220 South St. Francis Dr.
Santa Fe, NM 87505

WELL API NO. 30-045-33069	
5. Indicate Type of Lease STATE <input type="checkbox"/> FEE <input type="checkbox"/> Fed. <input checked="" type="checkbox"/>	
6. State Oil & Gas Lease No. Federal NM-96800	
7. Lease Name or Unit Agreement Name Hoss	
8. Well Number 91	
9. OGRID Number 006515	
10. Pool name or Wildcat Basin Fruitland Coal	

SUNDRY NOTICES AND REPORTS ON WELLS
(DO NOT USE THIS FORM FOR PROPOSALS TO DRILL OR TO DEEPEN OR PLUG BACK TO A DIFFERENT RESERVOIR. USE "APPLICATION FOR PERMIT" (FORM C-101) FOR SUCH PROPOSALS.)

1. Type of Well:
Oil Well ☐ Gas Well ☒ Other

2. Name of Operator
Dugan Production Corp.

3. Address of Operator
709 East Murray Drive, Farmington, New Mexico 87401

4. Well Location
Unit Letter P : 990 feet from the south line and 990 feet from the east line
Section 22 Township 23N Range 11W NMPM County San Juan

11. Elevation (Show whether DR, RKB, RT, GR, etc.)
GL-6310'

Pit or Below-grade Tank Application (For pit or below-grade tank closures, a form C-144 must be attached)
Pit Location: UL P Sect 22 Twp 23N Rng 11W Pit type Drilling Depth to Groundwater 490' Distance from nearest fresh water well >1000'
Distance from nearest surface water >1000' Below-grade Tank Location UL Sect Twp Rng ;
feet from the line and feet from the line

12. Check Appropriate Box to Indicate Nature of Notice, Report or Other Data

NOTICE OF INTENTION TO:

PERFORM REMEDIAL WORK ☐ PLUG AND ABANDON ☐
TEMPORARILY ABANDON ☐ CHANGE PLANS ☐
PULL OR ALTER CASING ☐ MULTIPLE COMPLETION ☐

SUBSEQUENT REPORT OF:

REMEDIAL WORK ☐ ALTERING CASING ☐
COMMENCE DRILLING OPNS. ☐ PLUG AND ABANDONMENT ☐
CASING TEST AND CEMENT JOB ☐

OTHER: Reserve pit for drilling, lined ☒

OTHER: ☐

13. Describe proposed or completed operations. (Clearly state all pertinent details, and give pertinent dates, including estimated date of starting any proposed work). SEE RULE 1103. For Multiple Completions: Attach wellbore diagram of proposed completion or recompletion. A water based gel-mud will be used to drill surface and production casing hole. Standard 2,000 psi BOP will be used to drill production hole. The reserve pit will be lined with an impervious material and be abandoned as per BLM conditions of approval, following completion of the well.

I hereby certify that the information above is true and complete to the best of my knowledge and belief. I further certify that any pit or below-grade tank has been/will be constructed or closed according to NMOCD guidelines ☐, a general permit ☐ or an (attached) alternative OCD-approved plan ☐. Federal lease, pits will be constructed and abandoned as per BLM conditions of approval.

SIGNATURE Kurt Fagrelus TITLE Geologist DATE 4/28/2005

Type or print name Kurt Fagrelus E-mail address: kfagrelus@duganproduction.com Telephone No. 505-325-1821

(This space for State use)

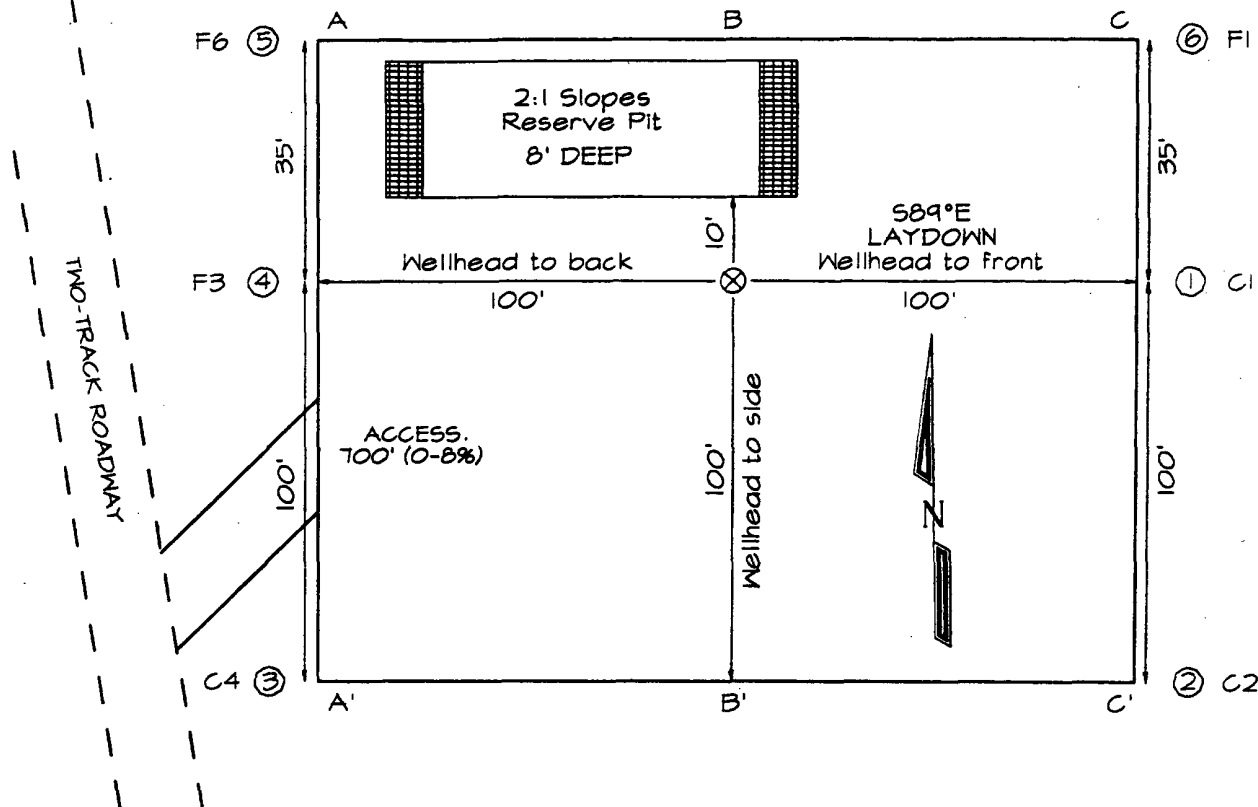
APPROVED BY Chad R TITLE SUPERVISOR DISTRICT #3 DATE OCT 21 2005

Conditions of approval, if any: Pits to be constructed and Abandoned According to NMOCD Rule 50 And Guidelines

DUGAN PRODUCTION CORPORATION HOSS #91
990' FSL & 990' FEL, SECTION 22, T23N, R11W, NMPM
SAN JUAN COUNTY, NEW MEXICO ELEVATION: 6310'

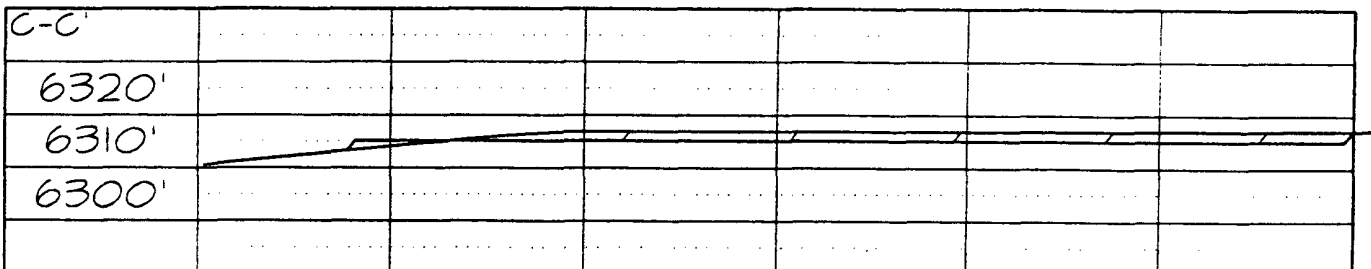
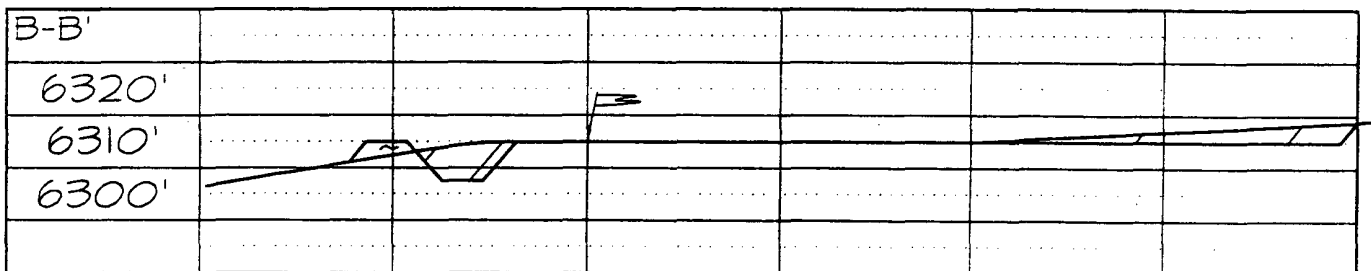
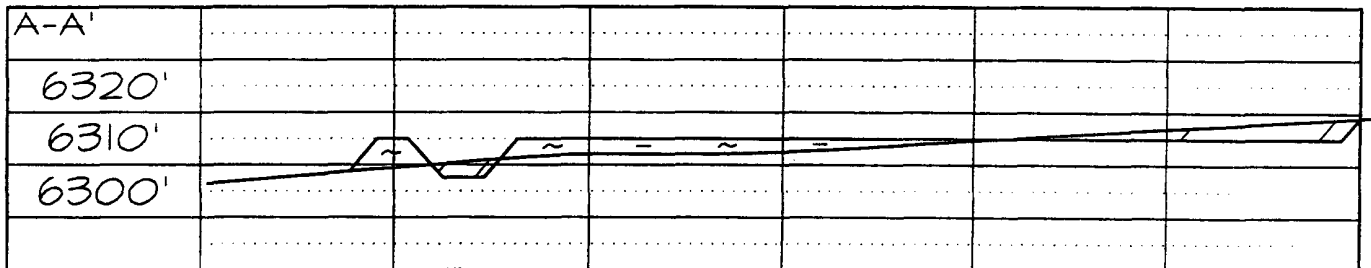
PLAT 3.

LATITUDE: 36°12'28"
LONGITUDE: 107°59'11"
 DATUM: NAD1927



PLAT NOTE:

SURFACE OWNER
 Bureau of Land
 Management

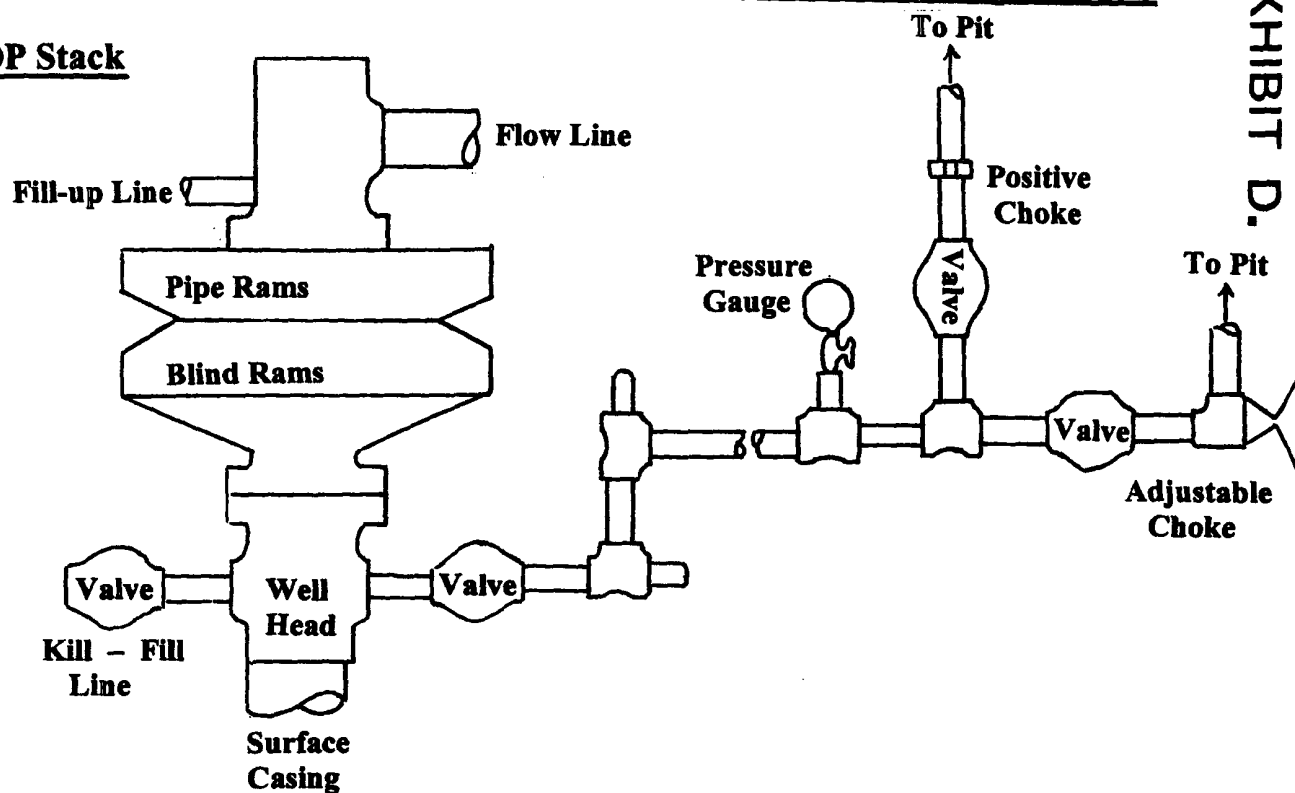


Note: Contractor should call One-Call for location of any marked or unmarked buried pipelines or cables on well pad and/or access road at least two (2) working days prior to construction

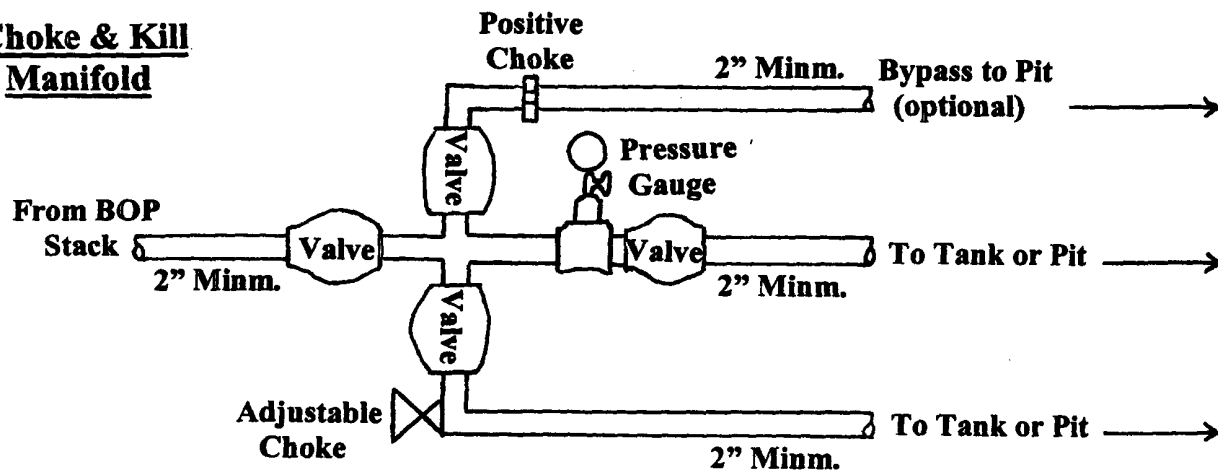
Well Control Equipment Schematic for 2,000 psi BOP

EXHIBIT D.

BOP Stack



Choke & Kill Manifold



Working Pressure for all equipment is 2,000 psi or greater

DUGAN PRODUCTION CORP.
HOSS #91