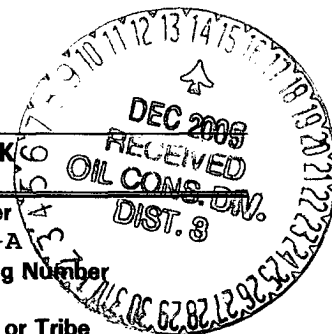


UNITED STATES  
DEPARTMENT OF THE INTERIOR  
BUREAU OF LAND MANAGEMENT

APPLICATION FOR PERMIT TO DRILL, DEEPEN, OR PLUG BACK



1a. Type of Work DRILL	5. Lease Number NMSF-078503-A Unit Reporting Number	
1b. Type of Well GAS	6. If Indian, All. or Tribe	
2. Operator <b>BURLINGTON RESOURCES</b> Oil & Gas Company LP 070 FARMINGTON NM	7. Unit Agreement Name San Juan 29-7 Unit	
3. Address & Phone No. of Operator PO Box 4289, Farmington, NM 87499 (505) 326-9700	8. Farm or Lease Name San Juan 29-7 Unit 9. Well Number 127N	
4. Location of Well 20' FSL & 420' FEL	10. Field, Pool, Wildcat Blanco Mesaverde/Basin Dakota	
Latitude 36° 42.2598'N, Longitude 107° 36.2473'W	11. Sec., Twn, Rge, Mer. (NMPM) Sec. 19, T29N, R7W API # 30-045-039-29710	
14. Distance in Miles from Nearest Town 20 miles-Blanco NM	12. County Rio Arriba	13. State NM
15. Distance from Proposed Location to Nearest Property or Lease Line 20'	17. Acres Assigned to Well E/2 320	
16. Acres in Lease 320 E/2	18. Distance from Proposed Location to Nearest Well, Drig, Compl, or Applied for on this Lease 1434'	
19. Proposed Depth 7736'	20. Rotary or Cable Tools Rotary	
21. Elevations (DF, FT, GR, Etc.) 6575' GR, 6587' KB	22. Approx. Date Work will Start	
23. Proposed Casing and Cementing Program See Operations Plan attached		
24. Authorized by: <u>Frances Bond</u> Regulatory Specialist	Date <u>11-30-05</u>	

PERMIT NO.

APPROVAL DATE

APPROVED BY

TITLE

DATE

Archaeological Report Attached

Threatened and Endangered Species Report Attached

NOTE: This format is issued in lieu of U.S. BLM Form 3160-3

Title 18 U.S.C. Section 1001, makes it a crime for any person knowingly and willfully to make to any department or agency of the United States any false, fictitious or fraudulent statements or presentations as to any matter within its jurisdiction.

This action is subject to technical and procedural review pursuant to 43 CFR 3165.3  
(43 CFR 3165.3-4)

DRILLING OPERATIONS AUTHORIZED AND  
SUBJECT TO COMPLIANCE WITH ATTACHED  
"GENERAL REQUIREMENTS".

NMOC

DISTRICT I  
1625 N. French Dr., Hobbs, N.M. 88240

DISTRICT II  
811 South First, Artesia, N.M. 88210

DISTRICT III  
1000 Rio Brazos Rd., Aztec, N.M. 87410

DISTRICT IV  
2040 South Pacheco, Santa Fe, NM 87505

State of New Mexico  
Energy, Minerals & Natural Resources Department

Form C-102  
Revised August 15, 2000

OIL CONSERVATION DIVISION

2040 South Pacheco,  
Santa Fe, NM 87505

Submit to Appropriate District Office  
State Lease - 4 Copies  
Fee Lease - 3 Copies

☐ AMENDED REPORT

WELL LOCATION AND ACREAGE DEDICATION PLAT

<sup>1</sup> API Number 30-039- 29710	<sup>2</sup> Pool Code MV-72319 DK-71599	<sup>3</sup> Pool Name Blanco MV/ Basin DK
<sup>4</sup> Property Code 7465	<sup>5</sup> Property Name SAN JUAN 29-7 UNIT	<sup>6</sup> Well Number 127N
<sup>7</sup> GRID No. 14538	<sup>8</sup> Operator Name BURLINGTON RESOURCES OIL AND GAS COMPANY LP	<sup>9</sup> Elevation 6575'

<sup>10</sup> Surface Location

UL or lot no.	Section	Township	Range	Lot Idn	Feet from the	North/South line	Feet from the	East/West line	County
P	19	29-N	7-W		20'	SOUTH	420'	EAST	RIO ARriba

<sup>11</sup> Bottom Hole Location If Different From Surface

UL or lot no.	Section	Township	Range	Lot Idn	Feet from the	North/South line	Feet from the	East/West line	County
<sup>12</sup> Dedicated Acres E@ MV/DK 320			<sup>13</sup> Joint or Infill		<sup>14</sup> Consolidation Code		<sup>15</sup> Order No.		

NO ALLOWABLE WILL BE ASSIGNED TO THIS COMPLETION UNTIL ALL INTERESTS HAVE BEEN CONSOLIDATED  
OR A NON-STANDARD UNIT HAS BEEN APPROVED BY THE DIVISION

LOT 5			
LOT 6			
LOT 7			
LOT 8			
19			
NM SF-078503-A			
LAT: 36°42.2596' N. LONG: 107°36.2473' W. NAD 1927			
N 89°-55'-02" W 20' 420'			

<sup>17</sup> OPERATOR CERTIFICATION

I hereby certify that the information contained herein  
is true and complete to the best of my knowledge and  
belief

*Philana Thompson*  
Signature  
Philana Thompson  
Printed Name  
Regulatory Associate II  
Title  
9/28/05  
Date

<sup>18</sup> SURVEYOR CERTIFICATION

I hereby certify that the well location shown on this plat  
was plotted from field notes of actual surveys made by  
me or under my supervision, and that the same is true  
and correct to the best of my belief.

Date of Survey 9/28/05  
Signature *Calvin A. Russell*  
Surveyor  
15703  
Certificate Number 15703

Office

District I

1625 N. French Dr., Hobbs, NM 88240

District II

1301 W. Grand Ave., Artesia, NM 88210

District III

1000 Rio Brazos Rd., Aztec, NM 87410

District IV

1220 S. St. Francis Dr., Santa Fe, NM 87505

Energy, Minerals and Natural Resources

## OIL CONSERVATION DIVISION

1220 South St. Francis Dr.

Santa Fe, NM 87505

WELL API NO.

30-039- 29710

5. Indicate Type of Lease

STATE ☐FEE ☐

6. State Oil &amp; Gas Lease No.

NMSF-078503-A

7. Lease Name or Unit Agreement Name

San Juan 29-7 Unit

8. Well Number

127N

9. OGRID Number

14538

10. Pool name or Wildcat

Blanco Mesaverde/Basin Dakota

SUNDRY NOTICES AND REPORTS ON WELLS  
(DO NOT USE THIS FORM FOR PROPOSALS TO DRILL OR TO DEEPEN OR PLUG BACK TO A  
DIFFERENT RESERVOIR. USE "APPLICATION FOR PERMIT" (FORM C-101) FOR SUCH  
PROPOSALS.)

1. Type of Well:

Oil Well ☐Gas Well ☒

Other

2. Name of Operator

BURLINGTON RESOURCES OIL &amp; GAS COMPANY LP

3. Address of Operator

3401 E. 30TH STREET, FARMINGTON, NM 87402

4. Well Location

Unit Letter P : 20 feet from the South line and 420 feet from the East lineSection 19 Township 29N Range 7W NMPM County Rio Arriba

11. Elevation (Show whether DR, RKB, RT, GR, etc.)

6575'

Pit or Below-grade Tank Application

☐ or Closure ☐Pit type New Drill

Depth to Groundwater

&gt;100'

Distance from nearest fresh water well

&gt;1000'

Distance from nearest surface water

&gt;1000'

Pit Liner Thickness:

n/a

mll

Below-Grade Tank:

Volume

bbls;

Construction Material

## 12. Check Appropriate Box to Indicate Nature of Notice, Report or Other Data

## NOTICE OF INTENTION TO:

PERFORM REMEDIAL WORK ☐PLUG AND ABANDON ☐TEMPORARILY ABANDON ☐CHANGE PLANS ☐PULL OR ALTER CASING ☐MULTIPLE COMPL ☐

OTHER:

New Drill ☒

## SUBSEQUENT REPORT OF:

REMEDIAL WORK ☐ALTERING CASING ☐COMMENCE DRILLING OPNS. ☐P AND A ☐CASING/CEMENT JOB ☐OTHER: ☐

13. Describe proposed or completed operations. (Clearly state all pertinent details, and give pertinent dates, including estimated date of starting any proposed work). SEE RULE 1103. For Multiple Completions: Attach wellbore diagram of proposed completion or recompletion.

New Drill, Unlined:

Burlington Resources proposes to construct a new drilling pit and an associated vent/flare pit. Based on Burlington's interpretation of the Ecosphere's risk ranking criteria, the new drilling pit and vent/flare pit will be an unlined pit as detailed in Burlington's Revised Drilling / Workover Pit Construction / Operation Procedures dated November 11, 2004 on file at the NMOCD office. A portion of the vent/flare pit will be designed to manage fluids, and that portion will be unlined, as per the risk ranking criteria. Burlington Resources anticipates closing these pits according to the Drilling / Workover Pit Closure Procedure dated August 2, 2004 on file at the NMOCD office.

I hereby certify that the information above is true and complete to the best of my knowledge and belief. I further certify that any pit or below-grade tank has been/will be constructed or closed according to NMOCD guidelines ☐, a general permit ☒ or an (attached) alternative OCD-approved plan ☐.

SIGNATURE

TITLE

Sr. Regulatory Specialist

DATE

11/30/2005

Type or print name

Joni Clark

E-mail address:

jclark@br-inc.com

Telephone No.

505-326-9701

For State Use Only

APPROVED BY

TITLE

DEPUTY OIL &amp; GAS INSPECTOR, DIST. 1

DATE

DEC 14 2005

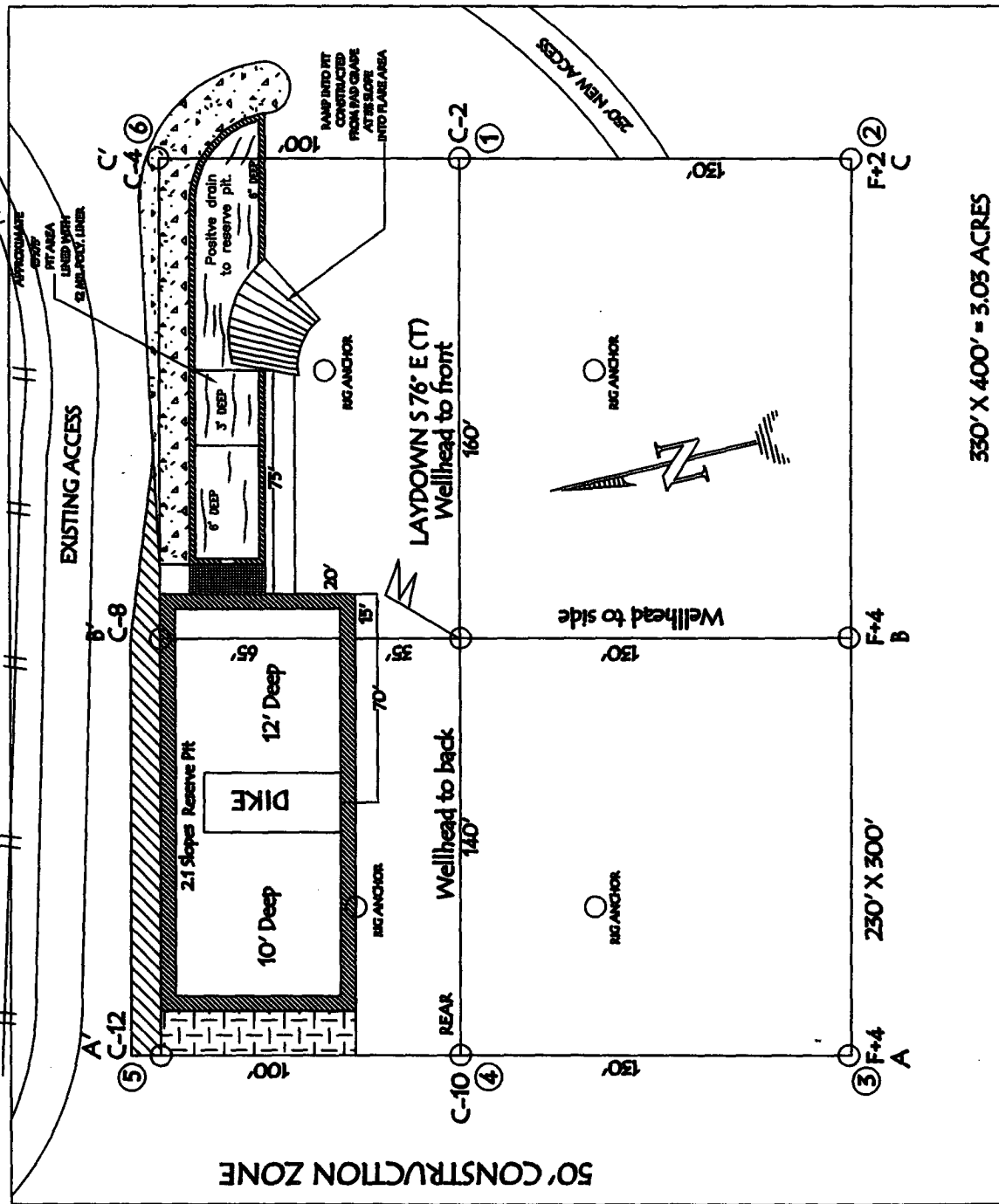
Conditions of Approval (if any):

# BURLINGTON RESOURCES OIL & GAS COMPANY LP

## SAN JUAN 29-7 UNIT #127N, 20' FSL & 420' FEL

### SECTION 19, T-29-N, R-7-W, NMPM, RIO ARriba COUNTY, NM

#### GROUND ELEVATION: 6575', DATE: AUGUST 30, 2005



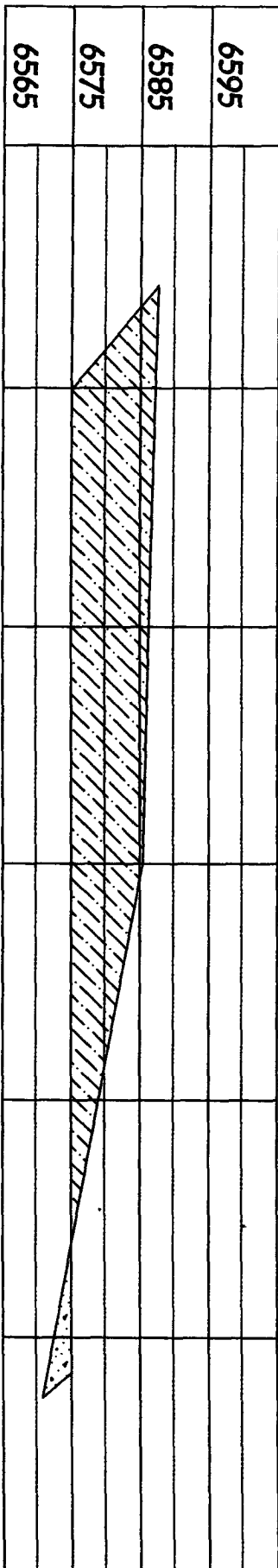
RESERVE PIT DIKE: TO BE 8' ABOVE DEEP SIDE (OVERFLOW - 3' WIDE AND 1' ABOVE SHALLOW SIDE).

NOTE: VECTOR SURVEYS IS NOT LIABLE FOR UNDERGROUND UTILITIES OR PIPELINES. CONTRACTOR SHOULD CALL ONE-CALL FOR LOCATION OF ANY MARKED OR UNMARKED BURIED PIPELINES OR CABLES ON WELL PAD AND OR ACCESS ROAD AT LEAST TWO (2) WORKING DAYS PRIOR TO CONSTRUCTION.

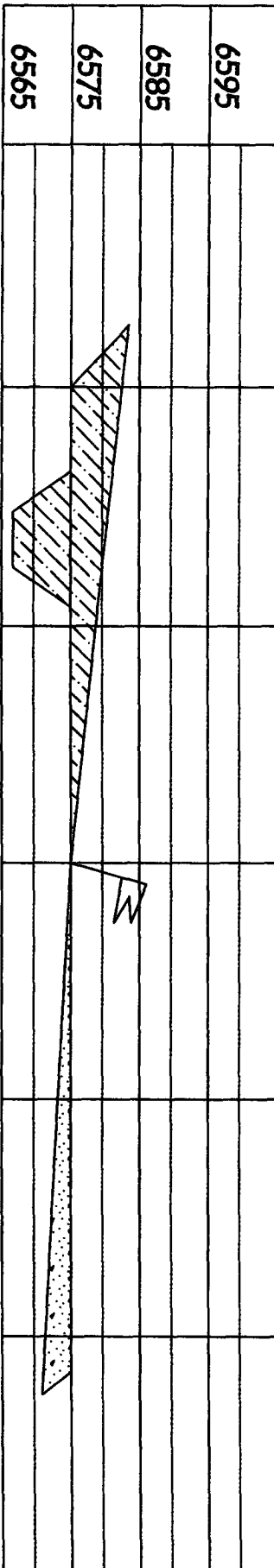
LATITUDE: 36° 42.2598' N LONGITUDE: 107° 36.2473' W NAD27

**BURLINGTON RESOURCES OIL & GAS COMPANY LP**  
**SAN JUAN 29-7 UNIT #127N, 20' FSL & 420' FEL**  
**SECTION 19, T-29-N, R-7-W, NMPM, RIO ARriba COUNTY, NM**  
**GROUND ELEVATION: 6575', DATE: AUGUST 30, 2005**

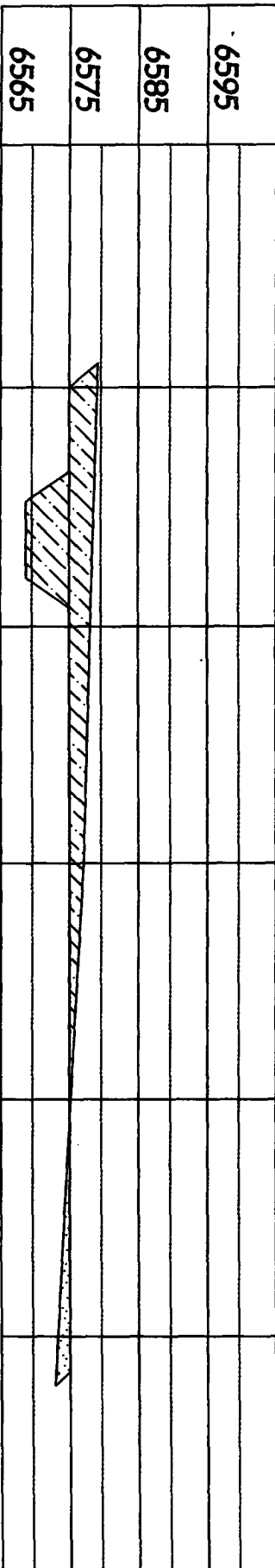
ELEV. A'-A



ELEV. B'-B



ELEV. C'-C



NOTE: VECTOR SURVEYS IS NOT LIABLE FOR UNDERGROUND UTILITIES OR PIPELINES.  
 CONTRACTOR SHOULD CALL ONE-CALL FOR LOCATION OF ANY MARKED OR UNMARKED BURIED  
 PIPELINES OR CABLES ON WELL PAD AND OR ACCESS ROAD AT LEAST TWO (2) WORKING DAYS PRIOR TO CONSTRUCTION.

## OPERATIONS PLAN

**Well Name:** San Juan 29-7 Unit #127N

**Location:** 20' FSL, 420' FEL, Sec 19, T29N, R7W  
Rio Arriba County, NM

Latitude 36° 42.2598'N Longitude 107° 36.2473'W

**Formation:** Blanco Mesaverde/Basin Dakota

**Total Depth:** 7736'

**Logging Program:** See San Juan 29-7 Unit Master Operations Plan


**Mud Program:** See San Juan 29-7 Unit Master Operations Plan

**Casing Program (as listed, the equivalent, or better):**

Hole Size	Depth Interval	Csg	Wt.	Grade	Cement	
12 1/4	0' - 120	9.625"	32.3#	H-40	113	cu.ft
8 3/4	0' - 3522	7"	20.0#	J-55	788	cu.ft
6 1/4	0' - 7736	4.5"	10.5/11.6#	J-55	574	cu.ft

**Tubing Program:** See San Juan 29-7 Unit Master Operations Plan

- \* The Mesaverde and Dakota formations will be completed and commingled.
- \* The east half of Section 19 is dedicated to the Mesaverde and the Dakota formation in this well.
- \* Gas is dedicated.

  
Drilling Engineer

10/31/05  
Date

\*Assumption  
Lewis 100