

**UNITED STATES
DEPARTMENT OF THE INTERIOR
BUREAU OF LAND MANAGEMENT**

Sundry Notices and Reports on Wells

1. Type of Well
GAS

2. Name of Operator

BURLINGTON

RESOURCES OIL & GAS COMPANY LP

3. Address & Phone No. of Operator

PO Box 4289, Farmington, NM 87499 (505) 326-9700

4. Location of Well, Footage, Sec., T, R, M

790' FNL & 1305' FEL, Section 30, T30N, R6W, ~~N6W~~ NMPM

5. Lease Number
NMSF-080712A
6. If Indian, All. or
Tribe Name

7. Unit Agreement Name

San Juan 30-6 Unit

8. Well Name & Number

SJ 30-6 Unit #480

9. API Well No.

30-039-24488

10. Field and Pool

Basin Fruitland Coal

11. County and State
Rio Arriba Co., NM

12. CHECK APPROPRIATE BOX TO INDICATE NATURE OF NOTICE, REPORT, OTHER DATA

Type of Submission

☒ Notice of Intent☐ Subsequent Report☐ Final Abandonment

Type of Action

☐ Abandonment☐ Recompletion☐ Plugging☐ Casing Repair☐ Altering Casing☒ Change of Plans☐ New Construction☐ Non-Routine Fracturing☐ Water Shut off☐ Conversion to Injection

Other: Also Deepen for sump
CONDITIONS OF APPROVAL
Adhere to previously issued stipulations.

13. Describe Proposed or Completed Operations

This sundry replaces the NOI dated 10/19/05. Plans have changed to include deepening well for sump.

The subject well had the casing repaired and tested in April 2005. The well has started producing H2S gas and we are requesting permission to test the casing and locate the source of the H2S. While we are in there we plan to pull the existing 5-1/2" liner and then deepen the well approximately 140' to include a lower FC interval and provide for a sump. The new TD will be approx. 3268'. A mud logger will be present to insure Pictured Cliffs gas isn't encountered. We will then run a 4-1/2" long string and cement to surface. All necessary safety precautions will be taken during rig activity and testing. See the attached proposed wellbore diagram and procedure.

CONDITIONS OF APPROVAL

Plans are still to conduct the BH test as soon as the well work is complete and the well can be shut-in for the test.

14. I hereby certify that the foregoing is true and correct.

Signed

Patsy Clugston

Patsy Clugston

Title Sr. Regulatory Associate

Date 11/7/05

(This space for Federal or State Office use)

APPROVED BY

Patricia Haddock

Title

PETE ENG

Date

11/14/05

CONDITION OF APPROVAL, if any:

Title 18 U.S.C. Section 1001, makes it a crime for any person knowingly and willfully to make any department or agency of the United States any false, fictitious or fraudulent statements or representations as to any matter within its jurisdiction.

APPROVED

SJ 30-6 #480
790' FNL & 1305' FEL
A-Sec 30-30N-6W
Rio Arriba County, NM

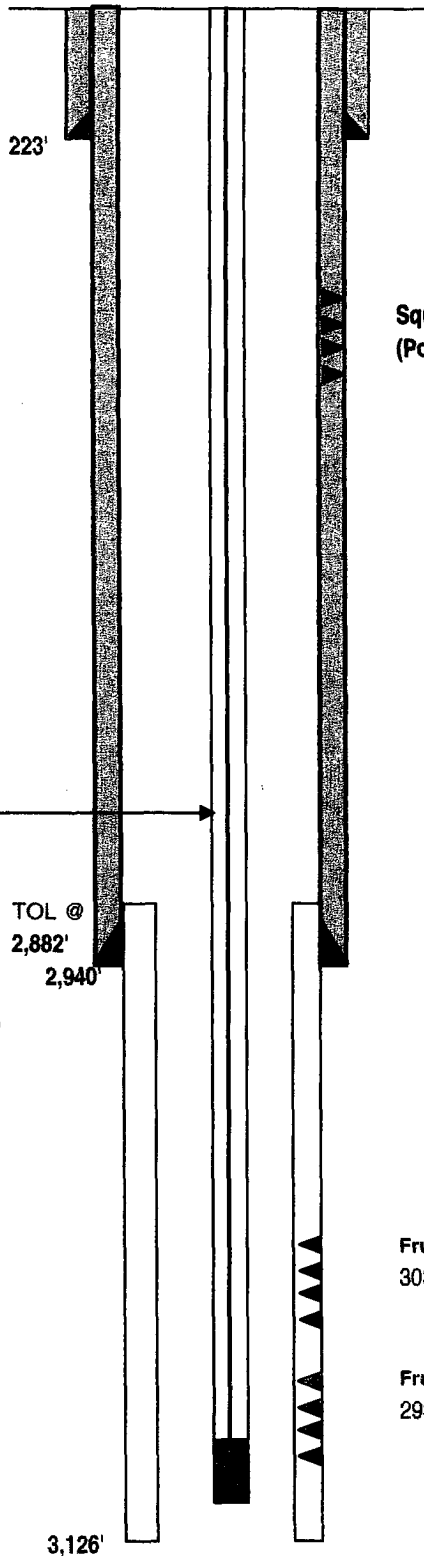
LAT: 36 deg 47.32' LONG: 107 deg 29.976
GL = 6,280' KB= 6,270'

Current Wellbore

Surface Casing:

9 5/8" 40.0# n-80
Cement: 275 sx TOC @ Surface by circ
Set @ 223'

Ojo Alamo 2,279'
Kirtland 2,388'
Fruitland Coal 2,745'
Pictured Cliffs



Squeezed bad casing from 828'-1202'
(Possible leak area)

Intermediate Casing:

7" 23.0# K-55
Cement: 275 sx TOC @ Surface by circ
Set @ 2,940'

Current Tubing:

2-3/8" 4.7# J-55
Set @ 3122
SN @ 3100

Rod String

2"X 1 1/4"X 14' RHAC-Z PUMP W/ SPIRAL ROD GUIDE-
SAND CHECK 3- 1 1/4" K-BARS 120 3/4" RODS 8', 8', 4',
PONY RODS 22' POLISH ROD

TOL @
2,882'
2,940'

Fruitland
3039-3125(Pre-drilled)

Fruitland
2932-2974(Pre-drilled)

Drop In Production Liner:

5 1/2" 15.5# K-55
Cement: None TOC @ Uncemented
Set @ 2,882' to 3,126'

PBTD= 3,128'
TD= 3,128'

RMF 10/18/05

SJ 30-6 #480

790' FNL & 1305' FEL

A-Sec 30-30N-6W

Rio Arriba County, NM

LAT: 36 deg 47.32'

LONG: 107 deg 29.976

GL = 6,280'

KB= 6,270'

Proposed Wellbore

Surface Casing:

9 5/8" 40.0# n-80
Cement: 275 sx TOC @ Surface by circ
Set @ 223'

Ojo Alamo 2,279'
Kirtland 2,388'
Fruitland Coal 2,745'
Pictured Cliffs

Intermediate Casing:

7" 23.0# K-55
Cement: 275 sx TOC @ Surface by circ
Set @ 2,940'

Proposed Tubing:

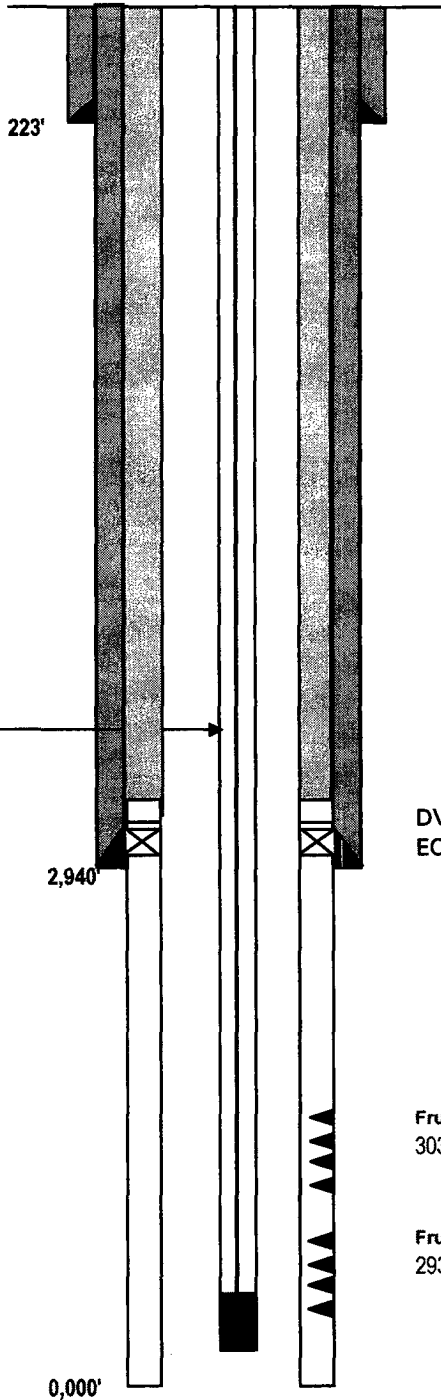
2-3/8" 4.7# J-55
(Approximately) Set @ 3160
SN @ 3129'

Rod String

1 1-1/4 x 8' dip tube, 2" X 1 1/2" X 14' RHAC-Z PUMP w/FARR
plunger, 1 - 1 1/4" K-BARS, 1 Norris Shear tool, 1 - 1 1/4" K-
BARS, 3/4" RODS to surface (approximately 122), 1 1/14" x 22'
PR w/PRL

Long String:

4 1/2" 11.6# L-80
Cement from 2915' to surf TOC @ Surface by circ
Set @ 3278'



DV Tool directly above ECP
ECP @ 2925'

Fruitland
3039-3125

Fruitland
2932-2974

PBTD= 3268'
TD= 3268'

RMF

11/08/05

San Juan 30-6 Unit 480

A 30 30N 6W
790' FNL & 1305' FEL
Rio Arriba County, NM
LAT: N36° 47.32 LONG: W107° 29.976
AIN OPE FTC: 421001

Recommended Tie-back Procedure

Scope: Test for casing leak, pull the existing 5-1/2" liner, deepen 150', TIH will new 4-1/2" long string, and cement to the surface.

Notify EH&S prior to moving rig, and have Safety Alliance on location with necessary H2S equipment

1. Comply with all NMOCD, BLM and Burlington safety and environmental regulations. **Verify H2S certification on location.** Test rig anchors and build blow pit prior to moving in rig.
2. Hold safety meeting, MIRU, and record tubing and casing pressures in DIMS. RU blow lines from casing valves, and begin blowing down casing pressure.
3. Unseat the pump and TOO H with: (1) 22" PR W/ PRL, (2) 3/4" x 8' pony rods, (1) 3/4" x 4' pony rod, (120) 3/4" x 25' sucker rods (note: visually inspect rods when tripping out of hole), (3) 1-1/4" x 25' sinker bars, 1 guide sand check, and (1) 2"x 1-1/4" x 14' RHAC-Z pump w/spiral rod
4. Kill well with 2% KCL if necessary. ND WH and NU BOP **trimmed for sour gas**
5. Tag-up and TOO H with: (1) jt 2-3/8", 4.7#, J-55 TBG (1) 4' x 2-3/8" pup jt, (2) 10' x 2-3/8" pup jt, (97) jts of 2-3/8" 4.7#, J-55, EUE tubing, (1) 2-3/8" SN, (1) 2-3/8" x 20' pinned mule-shoe jt. Note: visually inspect tubing out of hole. Report finding in DIMS
6. PU 7" bit and scraper and TIH to tag liner top at 2882'. TOO H with 7" bit and scraper.
7. PU RBP for 7", 23# casing, and set at 2832'
8. Load the hole, and pressure test casing. If casing pressure tested, contact area rig supervisor and area engineer
9. If casing does not test, latch on to RBP and TOO H
10. Latch on to 5-1/2" liner and TOO H (Note LH is a 5-1/2" TIW, JGS, w/ LT&C threads). If liner cannot be pulled out within 2 days, contact rig supervisor and Area engineer. See contact information below
11. Order 4-1/2" landing donut and landing JT
12. Clean-out to PBTD (approximately 3130') and drill and additional 140'
13. TIH with 4-1/2", 11.6#, L-80, with ECP set at 2915' and DV tool directly above it. Land casing at 3267' +/- 10'
14. RU cement company, set ECP and DV tool (see attached ECP / DV setting procedure and cement procedure) establish circulation, and cement to surface per procedure and Sr. rig supervisor instructions.
15. PU 3-7/8" mill and TIH. Mill out DV tool and cement.
16. CO to new PBTD (3268').
17. RU perforation company, and perforate from 2932'-2974' with 2 shots per foot, from 3039' to 3125' with 2 shots per foot and the newly drilled zone will be determined from mudd-logging at the time of drilling (should be approximately 3,150' - 3,180').
18. TIH with new BHA as follows, 1 2-3/8" bullplug, 1 2-3/8" tail JT with 4" ports 19' from top of JT and 3/8" bleeder hole 1' from top of jnt, 1 SN (1.780" ID), and 2-3/8", J-55, 4.7#, EUE tubing to surfaces as required to land at 3160' (approximately 97) .
19. TIH with production string as follows: 1 1"x 8' dip tube, 2"x 1-1/5" x 14' RWAC-Z pump w/FARR plunger, 1 1-1/4"x 25' sinker bars, 1 Norris shear tool, 1 1/4"x 25' sinker bar, 3/4" x 25' Norris class D sucker rods to surface (approximately 122), 1 1-1/4" x 22' polish rod w/ polish rod liner.
20. Place rod rattigan below the pump tee. Space out and seat the pump pressure test to 500 PSI. Check for good pump action. ND BOP, NU WH RDMO

Project Engineer

Rig Supervisor

Contacts

Ryan Frost Area engineer Cell 505-320-0953, office 505-320-9753
Bruce Voiles Area foreman Cell 505-320-2448
Steve Stamets Area Specialist 505-320-2516

Bureau of Land Management Conditions of Approval:

- 1) If cement squeeze work is necessary, contact Matt Halbert of the BLM Farmington Field Office @ (505) 599-6350.**
- 2) If this well is located in a Specially Designated Area (SDA), compliance with the appropriate seasonal closure requirements will be necessary.**
- 3) Pits must be lined with an impervious material at least 12 mils thick. The pit must be fenced on three (3) sides during workover operations and on the 4th side after the rig moves off location. Pits must be closed within 90 days of completion of the workover operations. Prior to closing the pit the liner must be cut off at mud level.**