

UNITED STATES
DEPARTMENT OF THE INTERIOR
BUREAU OF LAND MANAGEMENT

APPLICATION FOR PERMIT TO DRILL, DEEPEN, OR PLUG BACK

RECEIVED

1a. Type of Work DRILL	5. Lease Number NMNM-01772A Unit Reporting Number 070 Farmington, NM
1b. Type of Well GAS	6. If Indian, All. or Tribe
2. Operator BURLINGTON RESOURCES OIL & GAS COMPANY LP	7. Unit Agreement Name 32520
3. Address & Phone No. of Operator PO Box 4289, Farmington, NM 87401 (505) 326-9700	8. Farm or Lease Name Reid Com 9. Well Number 706
4. Location of Well 1055' FSL, 915' FWL Latitude 36° 40.19, Longitude 107° 49.02	10. Field, Pool, Wildcat Basin Fruitland Coal 11. Sec., Twn, Rge, Mer. (NMPM) M Sec. 8, T-28-N, R-9-W API # 30-045-31576
14. Distance in Miles from Nearest Town 12 miles from Bloomfield	12. County San Juan 13. State NM
15. Distance from Proposed Location to Nearest Property or Lease Line 915'	
16. Acres in Lease	17. Acres Assigned to Well 273.92 All
18. Distance from Proposed Location to Nearest Well, Drig, Compl, or Applied for on this Lease 2000'	
19. Proposed Depth 2494'	20. Rotary or Cable Tools Rotary
21. Elevations (DF, FT, GR, Etc.) 6006' GR	22. Approx. Date Work will Start
23. Proposed Casing and Cementing Program See Operations Plan attached	
24. Authorized by: <u>Regulatory/Compliance Supervisor</u>	Date <u>3-10-03</u>

PERMIT NO.

APPROVAL DATE

APPROVED BY

/s/ David J. Markiewicz

TITLE

DATE

JUN 10 2003

Archaeological Report to be submitted

Threatened and Endangered Species Report to be submitted

NOTE: This format is issued in lieu of U.S. BLM Form 3160-3

Title 18 U.S.C. Section 1001, makes it a crime for any person knowingly and willfully to make to any department or agency of the United States any false, fictitious or fraudulent statements or presentations as to any matter within its jurisdiction.

DRILLING OPERATIONS AUTHORIZED ARE
SUBJECT TO COMPLIANCE WITH ATTACHED
"GENERAL REQUIREMENTS".

This action is subject to technical and
procedural review pursuant to 43 CFR 3165.3
and appeal pursuant to 43 CFR 3165.4

NMOCDD

District II
PO Drawer DD, Artesia, NM 88211-0719

Instructions on back
Submit to Appropriate District Office
State Lease - 4 Copies
Fee Lease - 3 Copies

District III
1000 Rio Brazos Rd., Aztec, NM 87410

OIL CONSERVATION DIVISION
PO Box 2088
Santa Fe, NM 87504-2088

District IV
PO Box 2088, Santa Fe, NM 87504-2088

☐ AMENDED REPORT

WELL LOCATION AND ACREAGE DEDICATION PLAT

*API Number 30-045- 31576		*Pool Code 71629	*Pool Name Basin Frutiland Coal
*Property Code	*Property Name REID COM		*Well Number 706
*GRID No. 14538	*Operator Name BURLINGTON RESOURCES OIL & GAS COMPANY, LP		*Elevation 6006'

¹⁰ Surface Location

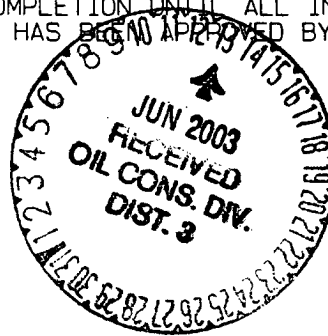
UL or lot no.	Section	Township	Range	Lot Idn	Feet from the	North/South line	Feet from the	East/West line	County
M	8	28N	9W		1055	SOUTH	915	WEST	SAN JUAN

¹¹ Bottom Hole Location If Different From Surface

UL or lot no.	Section	Township	Range	Lot Idn	Feet from the	North/South line	Feet from the	East/West line	County

¹² Dedicated Acres FTC - 273.92	¹³ Joint or Infill	¹⁴ Consolidation Code	¹⁵ Order No.
---	-------------------------------	----------------------------------	-------------------------

NO ALLOWABLE WILL BE ASSIGNED TO THIS COMPLETION UNTIL ALL INTERESTS HAVE BEEN CONSOLIDATED OR A NON-STANDARD UNIT HAS BEEN APPROVED BY THE DIVISION



¹⁷ OPERATOR CERTIFICATION

I hereby certify that the information contained herein is true and complete to the best of my knowledge and belief

Peggy Cole
Signature

Peggy Cole

Printed Name

Regulatory Supervisor
Title

3-10-03

Date

¹⁸ SURVEYOR CERTIFICATION

I hereby certify that the well location shown on this plat was plotted from field notes of actual surveys made by me or under my supervision, and that the same is true and correct to the best of my belief.

Survey Date: JANUARY 16, 2003

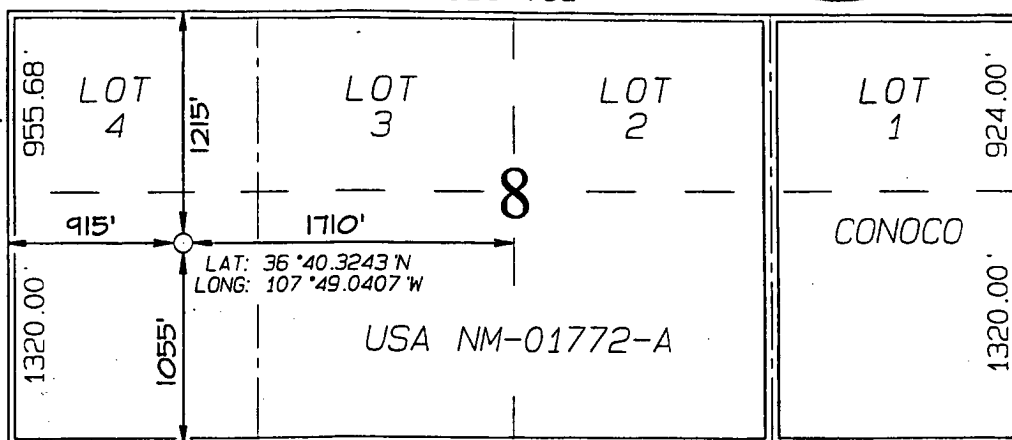
Signature and Seal of Professional Surveyor



JASON C. EDWARDS

Certificate Number 15269

5254.92'



5266.80'

070 Farmington, NM

2003 MAR 24 PM 1:27

RECEIVED

OPERATIONS PLAN

Well Name: Reid Com #706
Location: 1055' FSL, 915' FWL Section 8, T-28-N, R-9-W
Latitude 36° 40.3243, Longitude 107° 49.0407
San Juan County, NM
Formation: Basin Fruitland Coal
Elevation: 6006' GL

Formation:	Top	Bottom	Contents
Surface	San Jose	1189'	
Ojo Alamo	1189'	1330'	aquifer
Kirtland	1330'	2002'	gas
Fruitland	2002'	2290'	gas
Base of Basal Coal	2290'	2294'	gas
Pictured Cliffs	2294'		gas
Total Depth	2494'		

Logging Program: Platform Express from TD to surface.

Mudlog: 1330' to TD.

Coring Program: none

Mud Program:

Interval	Type	Weight	Vis.	Fluid Loss
0- 120'	Spud	8.4-9.0	40-50	no control
120-2494'	Non-dispersed	8.4-9.5	30-60	no control

Casing Program (as listed, the equivalent, or better):

Hole Size	Depth Interval	Csg. Size	Wt.	Grade
8 3/4"	0' - 120'	7"	20.0#	J-55
6 1/4"	0' - 2494'	4 1/2"	10.5#	J-55

Tubing Program:

0' - 2494'	2 3/8"	4.7#	J-55
------------	--------	------	------

Float Equipment: 7" surface casing - saw tooth guide shoe.

Centralizers will be run in accordance with Onshore Order #2.

4 1/2" production casing - guide shoe and self-fill float collar. Three centralizers run every fourth joint above shoe. Two turbolizing type centralizers - one below and one into the base of the Ojo Alamo @ 1330'. Standard centralizers thereafter every fourth joint up to the base of the surface pipe.

Wellhead Equipment: 7" x 4 1/2" x 2 3/8" x 11" 2000 psi xmas tree assembly.

Reid Com #706

Cementing:

7" surface casing - cement with 38 sx Class "B" Type III cement with 0.25 pps Celloflake and 3% calcium chloride (54 cu.ft. of slurry, 200% excess to circulate to surface). WOC 24 hours for pre-set holes or 8 hours for conventionally set holes before pressure testing or drilling out from under surface casing. Test casing to 600 psi/30 minutes.

4 1/2" production casing - lead w/122 sacks Premium Lite cement with 3% calcium chloride, 0.25 pps Celloflake, 5 pps LCM-1, 0.4% fluid loss, 0.4% sodium metasilicate. Tail with 90 sacks Type III cement with 1% calcium chloride, 0.25 pps Celloflake, 0.2% fluid loss (384 cu.ft., 50% excess to circulate to surface).

4 1/2" production casing alternative two stage: Stage collar 1902'. First stage: cement with w/66 sx Type III cmt w/1% calcium chloride, 0.25 pps Flocele, 0.2% fluid loss. Second stage: 137 sx Premium Lite cmt with 3% calcium chloride, 0.25 pps Flocele, 5 ps LCM-1, 0.4% fluid loss, 0.4% SMS (384 cu.ft., 50% excess to circulate to surface).

Note: If open hole logs are run, cement volumes will be based on 25% excess over caliper volumes.

BOP and tests:

Surface to TD - 11" 2000 psi (minimum) double gate BOP stack (Reference Figure #1). Prior to drilling out surface casing, test rams to 600#/30 min.

Completion - 7 1/6" 2000 psi (minimum) double gate BOP stack (Reference Figure #2). Prior to completion operations, test blind rams and casing to 1500 psi for 30 minutes; all pipe rams and casing to 1500 psi for 30 minutes each.

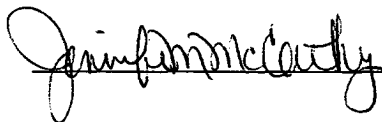
From surface to TD - choke manifold (Reference Figure #3).

Pipe rams will be actuated at least once each day and blind rams actuated once each trip to test proper functioning. An upper kelly cock valve with handle and drill string safety valves to fit each drill string will be maintained and available on the rig floor.

Additional information:

- * The Fruitland Coal formation will be completed.
- * Anticipated pore pressure for the Fruitland is 570 psi.
- * This gas is dedicated.
- * The all of section 8 is dedicated to the Fruitland Coal.

Drilling Engineer:



Date:

3/13/02