

UNITED STATES

DEPARTMENT OF THE INTERIOR

BUREAU OF LAND MANAGEMENT

APPLICATION FOR PERMIT TO DRILL OR REENTER

FORM APPROVED
OMB NO. 1004-0136
Expires: January 31, 2004

1a. Type of Work ☒ DRILL ☐ REENTER

1b. Type of Well ☐ Oil Well ☒ Gas Well ☐ Other ☐ Single Zone ☐ Multiple Zone

2. Name of Operator

Pogo Producing

3a. 300 N. Marienfeld, Suite 600

Midland, TX 79701

3b. Phone No. (include area code)

(432) 685-8143

4. Location of well (Report location clearly and in accordance with any State requirements. *)

At surface

1070'FSL, 760' FEL Latitude 36° 46' 48", Longitude 108° 12' 14"

At proposed prod. zone

14. DISTANCE IN MILES AND DIRECTION FROM NEAREST TOWN OR POST OFFICE*

North of Farmington, NM on Glade road approximately 1/2 mile from Pinon Hills Blvd.

15. Distance from proposed*

location to nearest

property or lease line, ft.

(Also to nearest drlg unit line, if any)

760'

16. No. of Acres in lease

1640

17. Spacing Unit dedicated to this well

E/2- 28

320 AC

18. Distance from proposed location*

to nearest well, drilling, completed,

applied for, on this lease, ft.

300'

19. Proposed Depth

1800'

20. BLM/ BIA Bond No. on file

NMB 000019 (Statewide)

21. Elevations (Show whether DF, RT, GR, etc.)

5547'

22. Approximate date work will start*

15-Oct-05

23. Estimated Duration

10 Days

24. Attachments

The following, completed in accordance with the requirements of Onshore Oil and Gas Order No. 1 shall be attached to this form:

1. Well plat certified by a registered surveyor.

2. A Drilling Plan.

3. A Surface Use Plan (if the location is on National Forest System Lands, the SUPO shall be filed with the appropriate Forest Service Office).

4. Bond to cover the operations unless covered by existing bond on file(see item 20 above).

5. Operator certification.

6. Such other site specific information and/ or plans as may be required by the a authorized officer.

25. Signature

S. M. Libby

Name (Printed/ Typed)

S. M. LIBBY

Date

08-15-05

Title

AGENT

Approved By (Signature)

S. M. Libby

Name (Printed/ Typed)

Office

PFO

Date

12/30/05

Title

AFM

Application approval does not warrant or certify that the applicant holds legal or equitable title to those rights in the subject lease which would entitle the applicant to cc operations thereon.

Conditions of approval, if any, are attached.

Title 18 U.S.C. Section 1001 and Title 43 U.S.C. Section 1212, make it a crime for any person knowingly and willfully to make to any department or agency of the United States any false, fictitious or fraudulent statements or representations as to any matter within its jurisdiction.

*(Instructions on reverse)

District I
PO Box 1980, Hobbs, NM 88241-1980

District II
PO Drawer 00, Artesia, NM 88211-0719

District III
1000 Rio Brazos Rd., Aztec, NM 87410

District IV
PO Box 2088, Santa Fe, NM 87504-2088

State of New Mexico
Energy, Minerals & Natural Resources Department

OIL CONSERVATION DIVISION
PO Box 2088
Santa Fe, NM 87504-2088

Form C-102
Revised February 21, 1994
Instructions on back
Submit to Appropriate District Office
State Lease - 4 Copies
Fee Lease - 3 Copies

☐ AMENDED REPORT

2005 AUG 17 AM 10 39

WELL LOCATION AND ACREAGE DEDICATION PLAT

API Number 30-045-33285	Pool Code 71629	Property Name 070 EASTMINGTON LN BASIN FRUITLAND COAL
Property Code 300784	Property Name RUTH	Well Number 1T
GRID No. 17891	Operator Name POGO PRODUCING COMPANY	Elevation 5547

¹⁰ Surface Location

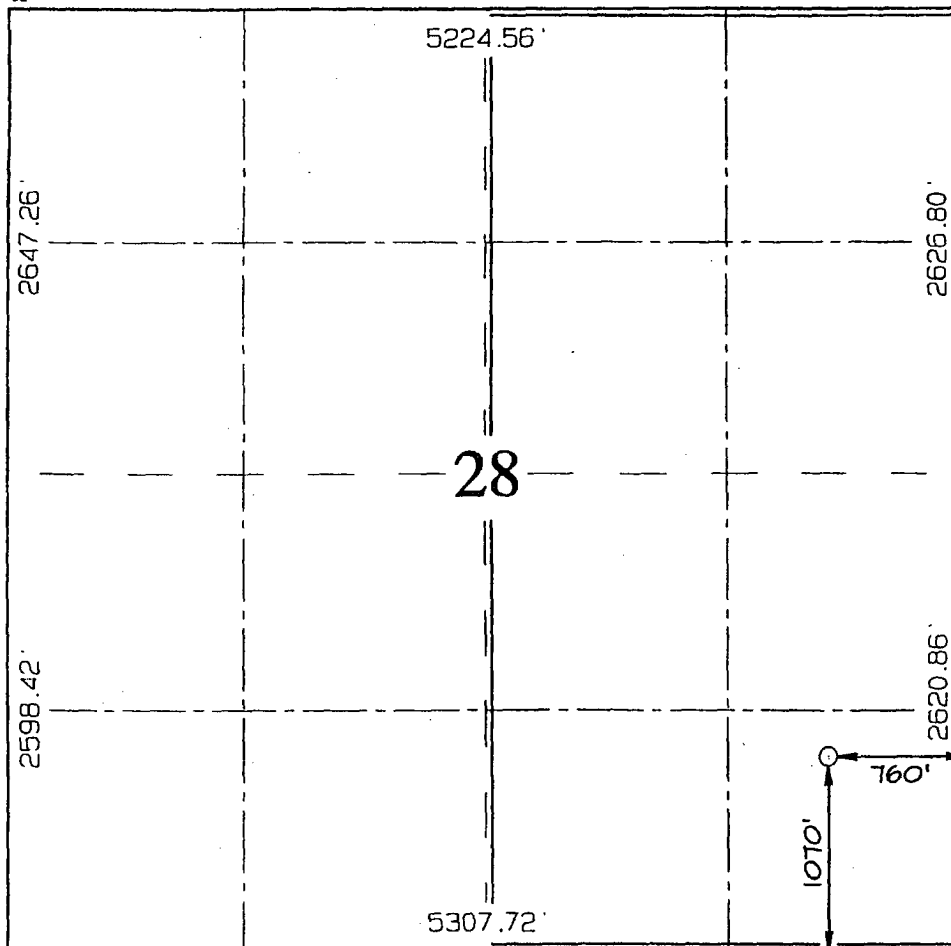
UL or lot no. P	Section 28	Township 30N	Range 13W	Lot Idn	Feet from the	North/South line	Feet from the	East/West line	County
					1070	SOUTH	760	EAST	SAN JUAN

¹¹ Bottom Hole Location If Different From Surface

UL or lot no.	Section	Township	Range	Lot Idn	Feet from the	North/South line	Feet from the	East/West line	County
¹² Dedicated Acres 320.0 Acres - (E/2)					¹³ Joint or Infill	¹⁴ Consolidation Code	¹⁵ Order No.		

NO ALLOWABLE WILL BE ASSIGNED TO THIS COMPLETION UNTIL ALL INTERESTS HAVE BEEN CONSOLIDATED OR A NON-STANDARD UNIT HAS BEEN APPROVED BY THE DIVISION

¹⁶



¹⁷ OPERATOR CERTIFICATION

I hereby certify that the information contained herein is true and complete to the best of my knowledge and belief

Bradley W. Salzman
Signature

BRADLEY W. SALZMAN
Printed Name

AGENT
Title

AUGUST 12, 2005
Date

¹⁸ SURVEYOR CERTIFICATION

I hereby certify that the well location shown on this plat was plotted from field notes of actual surveys made by me or under my supervision and that the same is true and correct to the best of my belief

Survey Date: FEBRUARY 22, 2005

Signature and Seal of Professional Surveyor

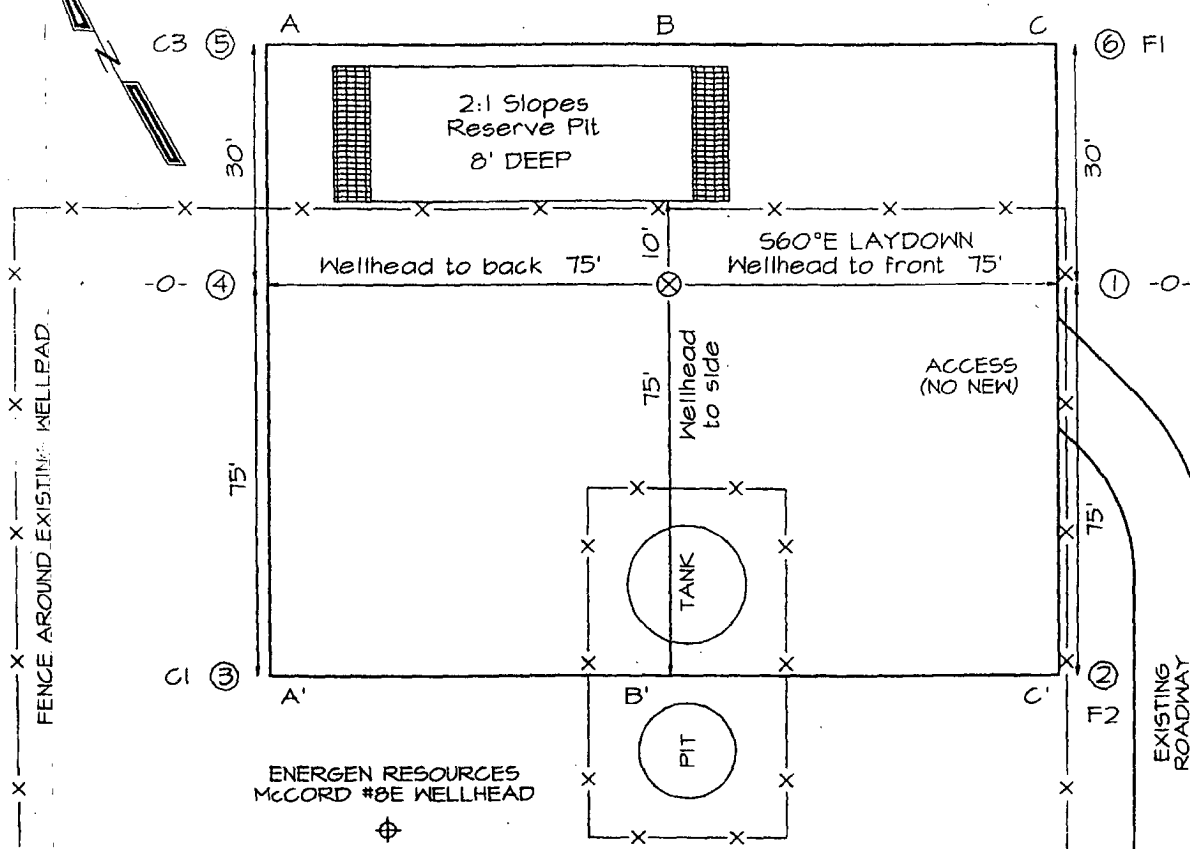


JASON C. EDWARDS
Certificate Number 15269

EXHIBIT A

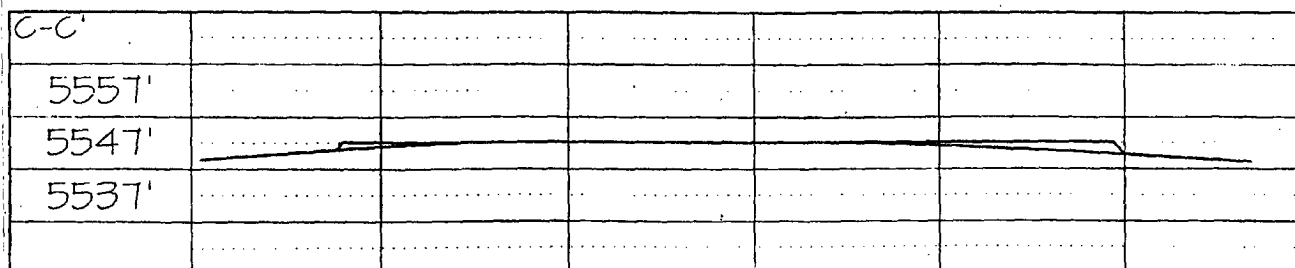
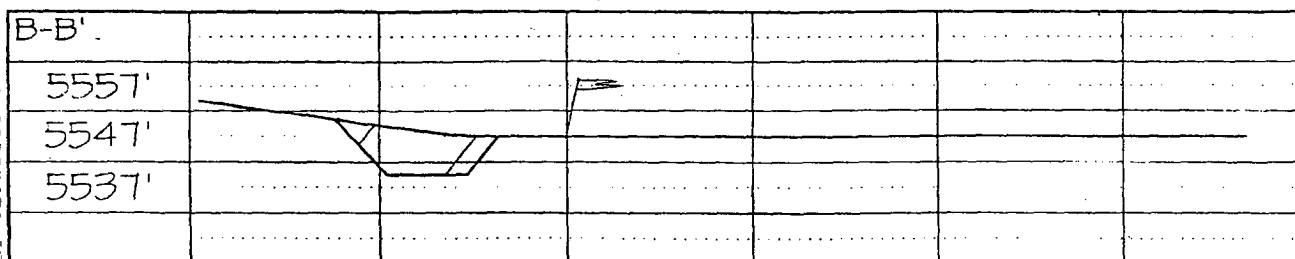
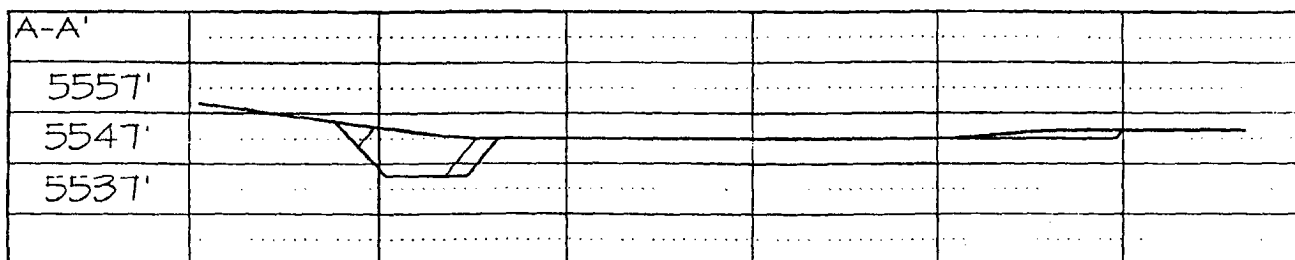
FOGO PRODUCING COMPANY RUTH #1T
 1070' FSL & 760' FEL, SECTION 28, T30N, R13W, NMPM
 SAN JUAN COUNTY, NEW MEXICO ELEVATION: 5547'

LATITUDE: 36°46'48"
 LONGITUDE: 108°12'14"
 DATUM: NAD1927



PLAT NOTE:

SURFACE OWNER
 Bruce Black



Note: Contractor should call One-Call for location of any marked or unmarked buried pipelines or cables on well pad and/or access road at least two (2) working days prior to construction

Exhibit C
TEN-POINT PROGRAM/ OPERATIONS PLAN
POGO PRODUCING COMPANY

Well name: Ruth #1T
Location: 1070' FSL, 760' FEL, Section 28, T-30-N, R-13-W, NMPM
San Juan County, NM
Formation: Basin Fruitland Coal

1. The geological surface formation is: Quaternary alluvium
2. The tops of important geological markers: (based on existing log information)

Ojo Alamo	165'
Kirtland	410'
Fruitland	1150'
Pictured Cliffs	1490'
Lewis Shale	1580'

3. Estimated depths of anticipated water, oil, gas, or minerals:

<u>Substance</u>	<u>Formation</u>	<u>Anticipated Depth</u>
Gas	Fruitland Coal	1360'

4. The Casing Program:

<u>Depth</u>	<u>Hole Size</u>	<u>Casing O.D.</u>	<u>Wt.</u>	<u>Grade</u>	<u>Type</u>	<u>New/Used</u>
0-650'	8 3/4"	7"	20#	J-55	ST&C	New
0-1650'	6 1/4"	4-1/2"	10.5#	J-55	ST&C	New

Proposed Cement Program: To effectively isolate and seal off all water, oil, gas and coal bearing strata encountered by the utilization of spacer and centralizers at the base of the Ojo Alamo formation as specified by NTL-FRA 90-1 III.B and API standards; and by using cement volumes as follows: (Exact volumes to be determined from logs):

Surface: 196 Cu Ft(166Sx) Class B w/ 0.25# Flocele/ Sx w/5#/Sk Gilsonite plus 2% CaCl (100% Excess).

Production: 85 Cubic Feet (42 Sacks Lite Standard Cement w/ 2% Metasilicate + 0.25 pps Flocele mixed to 12.4 ppg followed by 162 Cubic Feet (134 Sacks) Standard w/ 0.6% Halad-322 mixed to 15.6 ppg w/ caliper plus 25% excess in both slurries. Grand Totals: 247 Cubic Feet (176 Sacks).

5. Operators Minimum Specifications for pressure control:

Expected bottom hole pressure 300 psi or less.

Exhibit E is a schematic of the blowout preventer used by a local contractor for other wells in the area. The BOP to be used is an annular BOP with screwed connections with high-pressure inlet and outlet hoses, all tested to 750 psi minimum.

Exhibit C

**TEN-POINT PROGRAM
POGO PRODUCING COMPANY**

Well name: Ruth #1T
Location: 1070' FSL, 760' FEL, Section 28, T-30-N, R-13-W, NMPM
San Juan County, NM
Formation: Basin Fruitland Coal

6. The type and characteristic of the proposed circulating muds:

Surface Casing: Spud flocculating bentonite with lime.

Production Casing: Low solids non- disbursing system.

Interval	Mud Weight	Viscosity	Fluid Loss	Ph	Additives
0-650'	9.0	45	-----	9	Gel, Lime
650'-TD	8.6 - 9.2	30-50	<15cc	9	Additives as needed to maintain viscosity

7. Auxiliary Equipment to be used is as follows:

- a. Float valve above bit.
- b. Monitoring of mud system will be visual.
- c. A safety valve and subs to fit all drill strings will be used.

8. Testing, logging and coring will be as follows:

- a. Cores: None
- b. Drill stem tests: none anticipated.
- c. Logs will include: High Resolution Induction w/ Gamma Ray, SP, Caliper, Microlog, Spectral Density and Dual Spaced Neutron Microlog; all from Total depth to the surface casing shoe.

9. Anticipated Abnormal Pressures and temperatures:

No abnormal pressures, temperatures, or Hydrogen Sulfide gases are anticipated during the completion of this well.

10. Anticipated starting date and duration of operations:

The anticipated starting date is October, 2005. The drilling operations should be completed within 15 days after rig-up date. Completion will be done as equipment availability and weather permit.

Date: 8-12-05

Drilling Engineer:

Bradley T. Salzman

BLOW OUT PREVENTER (B.O.P.)

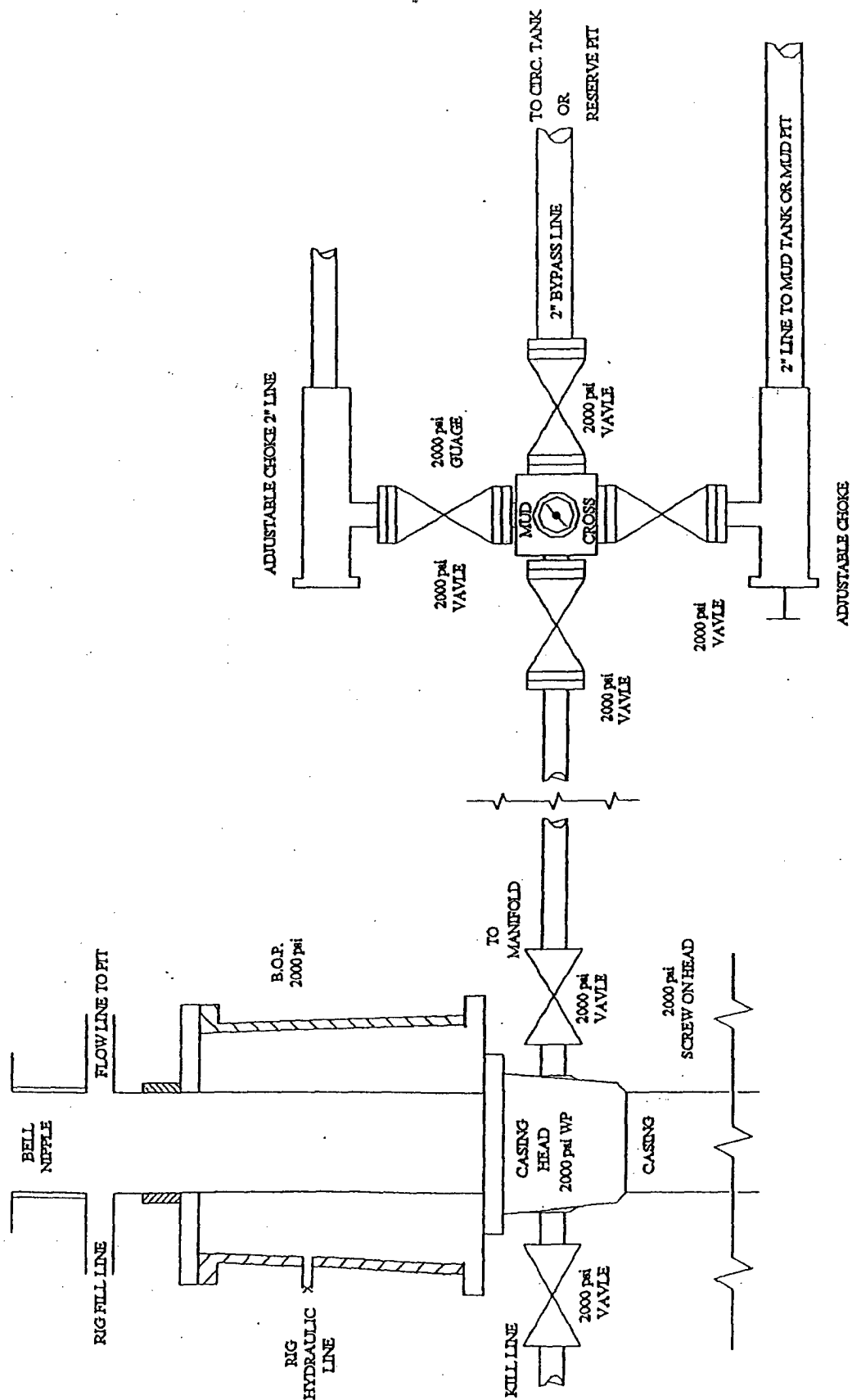


EXHIBIT E