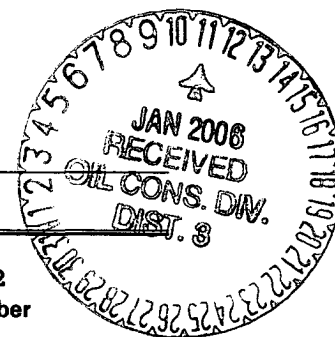


UNITED STATES
DEPARTMENT OF THE INTERIOR
BUREAU OF LAND MANAGEMENT



APPLICATION FOR PERMIT TO DRILL, DEEPEN, OR PLUG BACK

2005 DEC 20 PM 2:22
RECEIVED
070 FARMINGTON NM

1a. Type of Work DRILL	5. Lease Number NMSF-077652 Unit Reporting Number
1b. Type of Well GAS	6. If Indian, All. or Tribe
2. Operator BURLINGTON RESOURCES Oil & Gas Company, LP	7. Unit Agreement Name
3. Address & Phone No. of Operator PO Box 4289, Farmington, NM 87499 (505) 326-9700	8. Farm or Lease Name East 9. Well Number 20R
4. Location of Well Unit H (SENE), 1780' FNL & 885' FEL, Latitude 36° 52.3316'N Longitude 108° 03.6733'W	10. Field, Pool, Wildcat Aztec Pictured Cliffs 11. Sec., Twn, Rge, Mer. (NMPM) Sec. 26, T31N, R12W API # 30-045- 33492
14. Distance in Miles from Nearest Town	12. County San Juan 13. State NM
15. Distance from Proposed Location to Nearest Property or Lease Line 885'	
16. Acres in Lease	17. Acres Assigned to Well PC - 160 acres NE/4
18. Distance from Proposed Location to Nearest Well, Drig, Compl, or Applied for on this Lease East #22 - twinned	
19. Proposed Depth 2645	20. Rotary or Cable Tools Rotary
21. Elevations (DF, FT, GR, Etc.) 6009' GL	22. Approx. Date Work will Start
23. Proposed Casing and Cementing Program See Operations Plan attached	
24. Authorized by: <u>Patsy Clug</u> Sr. Regulatory Specialist	Date <u>12-19-05</u>

PERMIT NO.	APPROVAL DATE
APPROVED BY <u>[Signature]</u>	TITLE <u>AFM</u> DATE <u>1/6/06</u>

Archaeological Report attached
Threatened and Endangered Species Report attached
NOTE: This format is issued in lieu of U.S. BLM Form 3160-3
Title 18 U.S.C. Section 1001, makes it a crime for any person knowingly and willfully to make to any department or agency of the United States any false, fictitious or fraudulent statements or presentations as to any matter within its jurisdiction.

NMOCD

DISTRICT I
1625 N. French Dr., Hobbs, N.M. 88240

State of New Mexico
Energy, Minerals & Natural Resources Department

Form C-102
Revised August 15, 2000

DISTRICT II
811 South First, Artesia, N.M. 88210

Submit to Appropriate District Office
State Lease - 4 Copies
Fee Lease - 3 Copies

DISTRICT III
1000 Rio Brazos Rd., Aztec, N.M. 87410

OIL CONSERVATION DIVISION

2040 South Pacheco
Santa Fe, NM 87505

2005 DEC 20 PM 2 22

DISTRICT IV
2040 South Pacheco, Santa Fe, NM 87505

☐ AMENDED REPORT

WELL LOCATION AND ACREAGE DEDICATION PLAT

¹ API Number 30-045-33492	² Pool Code 71280	³ Pool Name Aztec Pictured Cliffs
⁴ Property Code 18517	⁵ Property Name EAST	⁶ Well Number 20R
⁷ GRID No. 14538	⁸ Operator Name BURLINGTON RESOURCES OIL AND GAS COMPANY LP	⁹ Elevation 6009'

¹⁰ Surface Location

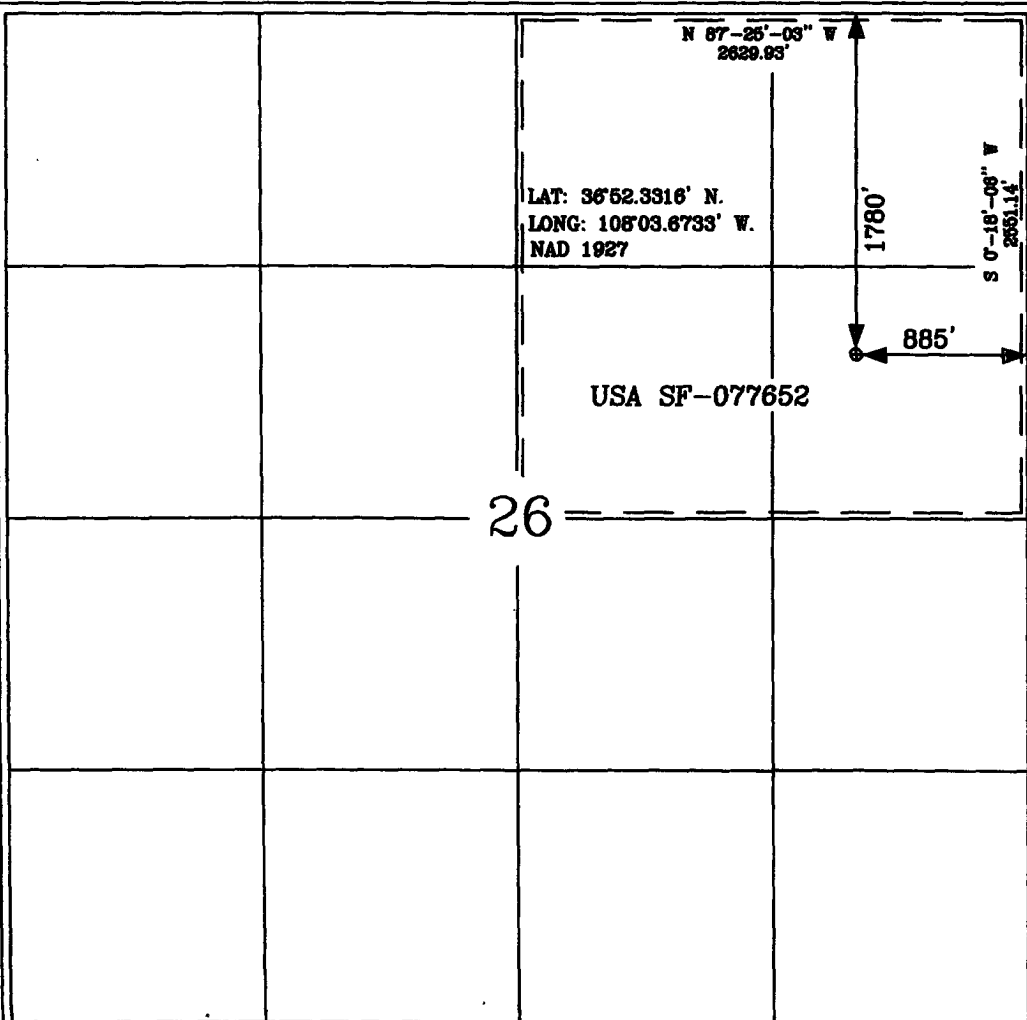
UL or lot no.	Section	Township	Range	Lot Idn	Feet from the	North/South line	Feet from the	East/West line	County
H	26	31-N	12-W		1780'	NORTH	885'	EAST	SAN JUAN

¹¹ Bottom Hole Location If Different From Surface

UL or lot no.	Section	Township	Range	Lot Idn	Feet from the	North/South line	Feet from the	East/West line	County
H									
¹² Dedicated Acres 160 NE/4			¹³ Joint or Infill		¹⁴ Consolidation Code		¹⁵ Order No.		

NO ALLOWABLE WILL BE ASSIGNED TO THIS COMPLETION UNTIL ALL INTERESTS HAVE BEEN CONSOLIDATED
OR A NON-STANDARD UNIT HAS BEEN APPROVED BY THE DIVISION

16



17 OPERATOR CERTIFICATION

I hereby certify that the information contained herein is true and complete to the best of my knowledge and belief

Patsy Clugston
Signature
Patsy Clugston
Printed Name
Sr. Regulatory Specialist
Title
12-13-05
Date

18 SURVEYOR CERTIFICATION

I hereby certify that the well location shown on this plat was plotted from field notes of actual surveys made by me or under my supervision, and that the same is true and correct to the best of my belief.

Date of Survey 12-8-05

Signature and Seal of Professional Surveyor

Glen W. Russell
Glen W. Russell
Professional Surveyor
15703
Certificate Number

Office

Energy, Minerals and Natural Resources

May 27, 2004

District I

1625 N. French Dr., Hobbs, NM 88240

District II

1301 W. Grand Ave., Artesia, NM 88210

District III

1000 Rio Brazos Rd., Aztec, NM 87410

District IV

1220 S. St. Francis Dr., Santa Fe, NM 87505

OIL CONSERVATION DIVISION

1220 South St. Francis Dr.

Santa Fe, NM 87505

WELL API NO.

30-045-33492

5. Indicate Type of Lease

STATE ☐FEE ☐

6. State Oil & Gas Lease No.

Federal Lease - NMSF-077652

7. Lease Name or Unit Agreement Name

East

8. Well Number

20R

9. OGRID Number

14538

10. Pool name or Wildcat

Aztec Pictured Cliffs

SUNDRY NOTICES AND REPORTS ON WELLS
(DO NOT USE THIS FORM FOR PROPOSALS TO DRILL OR TO DEEPEN OR PLUG BACK TO A DIFFERENT RESERVOIR. USE "APPLICATION FOR PERMIT" (FORM C-101) FOR SUCH PROPOSALS.)

1. Type of Well:

Oil Well ☐Gas Well ☒

Other

2. Name of Operator

BURLINGTON RESOURCES OIL & GAS COMPANY LP

3. Address of Operator

3401 E. 30TH STREET, FARMINGTON, NM 87402

4. Well Location

Unit Letter H : 1780 feet from the North line and 885 feet from the East line
 Section 26 Township 31N Rng 12W NMPM County San Juan

11. Elevation (Show whether DR, RKB, RT, GR, etc.)
 6009' GL

Pit or Below-grade Tank Application

☐ or Closure ☐Pit type New Drill Depth to Groundwater >100' Distance from nearest fresh water well>1000' Distance from nearest surface water <1000'

Pit Liner Thickness:

12

mil

Below-Grade Tank:

Volume

bbls;

Construction Material

12. Check Appropriate Box to Indicate Nature of Notice, Report or Other Data

NOTICE OF INTENTION TO:PERFORM REMEDIAL WORK ☐PLUG AND ABANDON ☐TEMPORARILY ABANDON ☐CHANGE PLANS ☐PULL OR ALTER CASING ☐MULTIPLE COMPL ☐**SUBSEQUENT REPORT OF:**REMEDIAL WORK ☐ALTERING CASING ☐COMMENCE DRILLING OPNS. ☐P AND A ☐CASING/CEMENT JOB ☐

OTHER:

New Drill Pit ☒OTHER: ☐

13. Describe proposed or completed operations. (Clearly state all pertinent details, and give pertinent dates, including estimated date of starting any proposed work). SEE RULE 1103. For Multiple Completions: Attach wellbore diagram of proposed completion or recompletion.

New Drill, Lined:

Burlington Resources proposes to construct a new drilling pit and an associated vent/flare pit. Based on Burlington's interpretation of the Ecosphere's risk ranking criteria, the new drilling pit will be a lined pit as detailed in Burlington's Revised Drilling / Workover Pit Construction / Operation Procedures dated November 11, 2004 on file at the NMOCD office. A portion of the vent/flare pit will be designed to manage fluids and that portion will be lined as per the risk ranking criteria. Burlington Resources anticipates closing these pits according to the Drilling / Workover Pit Closure Procedure dated August 2, 2004 on file at the NMOCD office.

I hereby certify that the information above is true and complete to the best of my knowledge and belief. I further certify that any pit or below-grade tank has been/will be constructed or closed according to NMOCD guidelines ☐, a general permit ☒ or an (attached) alternative OCD-approved plan ☐.

SIGNATURE

TITLE

Sr. Regulatory Specialist

DATE

12/15/2005

Type or print name

Patsy Clugston

E-mail address:

pclugston@br-inc.com

Telephone No.

505-326-9518

For State Use Only**DEPUTY OIL & GAS INSPECTOR, DIST. #4****JAN 11 2006**

APPROVED BY

TITLE

DATE

Conditions of Approval (if any):

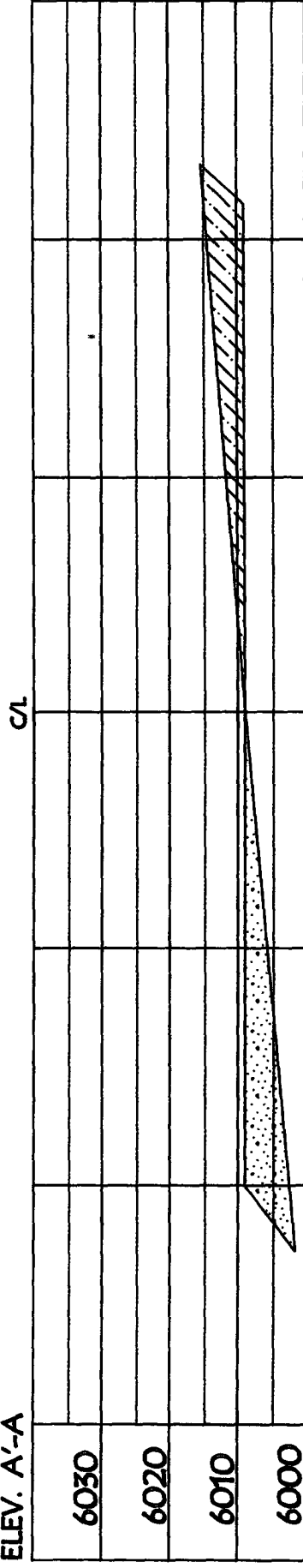
BURLINGTON RESOURCES OIL & GAS COMPANY LP

EAST 20R, 1780' FNL & 885' FEL

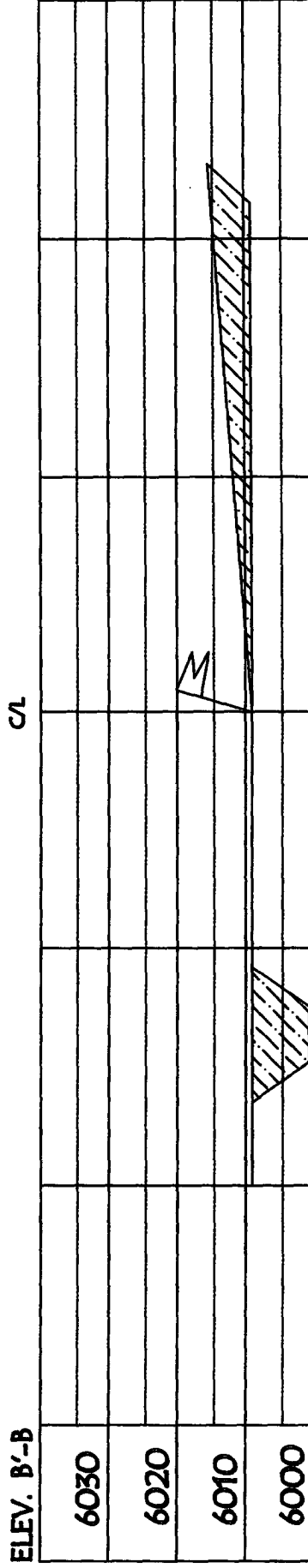
SECTION 26, T-31-N, R-12-W, NMPM, SAN JUAN COUNTY, NM

GROUND ELEVATION: 6009', DATE: NOVEMBER 28, 2005

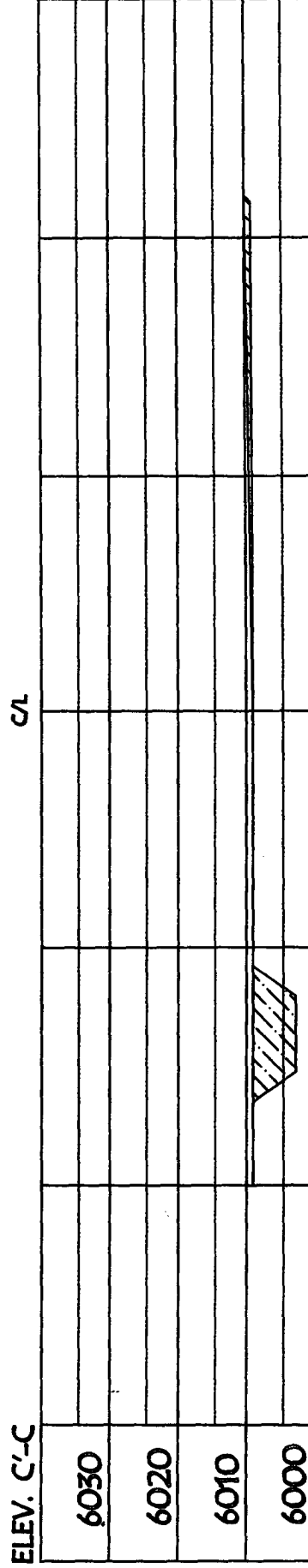
ELEV. A'-A



ELEV. B'-B



ELEV. C'-C



NOTE: VECTOR SURVEYS IS NOT LIABLE FOR UNDERGROUND UTILITIES OR PIPELINES.
CONTRACTOR SHOULD CALL ONE-CALL FOR LOCATION OF ANY MARKED OR UNMARKED BURIED
PIPELINES OR CABLES ON WELL PAD AND OR ACCESS ROAD AT LEAST TWO (2) WORKING DAYS PRIOR TO CONSTRUCTION.

OPERATIONS PLAN

Well Name: East 20R
Location: Unit H (SENE), 1780' FNL & 885' FEL, Section 26, T31N, R12W
 San Juan County, New Mexico
 Latitude 36° 52.3316'N Longitude 108° 03.6733' W
Formation: Pictured Cliffs
Elevation: 6009' GR

Formation:	Top	Bottom	Contents
Ojo Alamo	809'	861'	aquifer
Kirtland	861'	2109'	gas
T/Fruitland	2109'		gas
Pictured Cliffs	2445'		
Total Depth	2645'		

Logging Program: None

Mud Program:

Interval	Type	Weight	Vis. Fluid Loss
0-200' 120	Spud/Air/Air Mist	8.4-8.9	40-50 no control
200-2645'	Non-dispersed	8.4-9.5	30-60 no control

Casing Program:

Hole Size	Depth Interval	Csg. Size	Wt.	Grade
8 3/4"	0 - 200' 120	7"	20.0#	J-55
6 1/4"	0 - 2645'	4 1/2"	10.5#	J/K-55

Tubing Program:

0 - 2645'	2 3/8"	4.7#	J-55
-----------	--------	------	------

Float Equipment: 7" surface casing - guide shoe. Centralizers will be run in accordance with Onshore Order #2.

4 1/2" production casing - float shoe and float collar on bottom. Centralizers run every third joint above shoe to the base of the Ojo Alamo @ 861'. Two turbolizing type centralizers - one below and one into the base of the Ojo Alamo @ 861'. Standard centralizers thereafter every fourth joint up to the base of the surface pipe.

Wellhead Equipment: 7" x 4 1/2" x 2 3/8" x 11" 2000 psi xmas tree assembly.

December 15, 2005

Cementing:

7" surface casing Pre-Set Drilled - Cement with Type I, II cement with 20% flyash mixed at 14.5 ppg, 1.61 cu ft per sack yield. (Bring cement to surface). Wait on cement for 24 hours for pre-set holes before pressure testing or drilling out from under surface.

7" surface casing ^{1.28} Cement with 42 sx Type III cement with 0.25 pps Celloflake, 3% CaCl. 54 cu ft of slurry @ 1.51 yield). 200% excess, bring cement to surface. Wait on cement for 8 hrs for conventionally set holes before pressure testing or drilling out from under surface.
WOC until cement establishes 250 psi compressive strength prior to NU of BOPE.

4 1/2" production casing - Cement with 130 sx 276 cu ft of slurry @ 2.13 yield) Premium Lite with 3% calcium chloride, 5 pps LCM-1, and 1/4#/sack celloflake, 0.4% FL-52, & 0.4% SMS. Tail with 90 sacks (124 cu ft of slurry @ 1.38 yield) Type III cmt with 1% calcium chloride, 1/4#/sack Celloflake and 0.2% FL-52. Total of 400 cf - 50% excess to circulate to surface.

BOP and tests:

Surface to TD - 11" 2000 psi (minimum double gate BOP stack (Reference Figure #1 and #2). Prior to drilling out surface casing, test ^{rams} ~~rams~~ _{BOPE} to 600 psi/30 min.

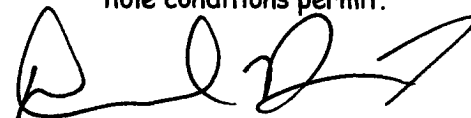
Completion - 6" 2000 psi (minimum) double gate BOP stack (Reference Figure #2). Prior to completion operations, test ^{rams} ~~rams~~ _{BOPE} and casing to 1500 psi/30 min.

From surface to TD - choke manifold (Reference Figure #3).

Pipe rams will be actuated at least once each day and blind rams actuated once each trip to test proper functioning. An upper kelly cock valve with handle and drill string safety valves to fit each drill string will be maintained and available on the rig floor.

Additional information:

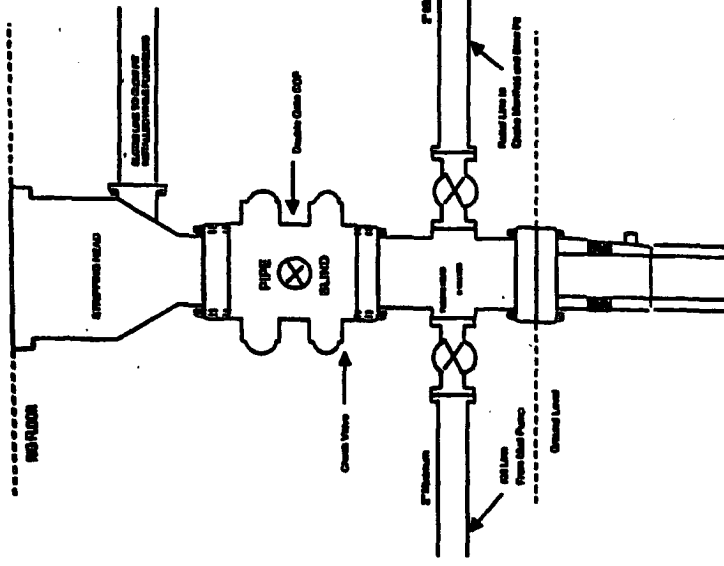
- * This is a replacement well for the East 20 PC/FC well which has had the PC interval plugged back and is currently only producing Fruitland Coal.
- * The Pictured Cliffs formation will be completed.
- * Anticipated pore pressure for the Pictured Cliffs is 600 psi.
- * This gas is dedicated.
- * The northeast quarter of the section is dedicated to this well.
- * New casing will be utilized.
- * Pipe movement (either rotation or reciprocation) will be done if hole conditions permit.


Drilling Engineer

12/19/05
Date

BURLINGTON RESOURCES

Completion/Workover Rig
BOP Configuration
2,000 psi System

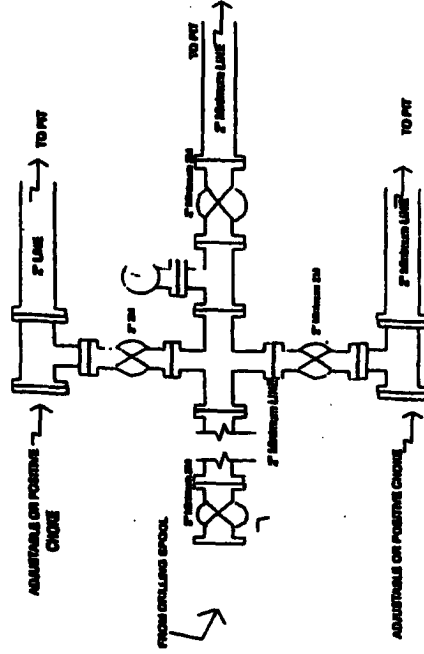


Minimum BOP Installation for all Completion/Workover Operations. 7-1/16" bore, 2000 psi minimum working pressure double gate BOP to be equipped with blind and pipe rams. A stripping head to be installed on the top of the BOP. All BOP equipment is 2000 psi working pressure or greater excluding 500 psi stripping head.

Figure #2

BURLINGTON RESOURCES

Drilling Rig
Choke Manifold Configuration
2000 psi System

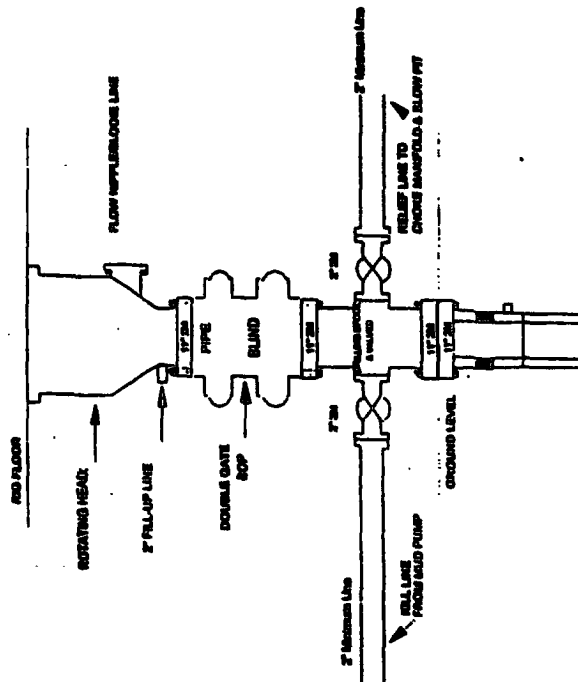


Choke manifold installation from Surface Casing Point to Total Depth. 2,000psi working pressure equipment with two chokes.

Figure #3

Burlington Resources

Drilling Rig
2000 psi System



BOP Installation from Surface Casing Point to Total Depth. 11\"/>

Figure #4