

District I
1625 N. French Dr., Hobbs, NM 88240
District II
1301 W. Grand Avenue, Artesia, NM 88210
District III
1000 Rio Brazos Road, Aztec, NM 87410
District IV
1220 S. St. Francis Dr., Santa Fe, NM 87505

State of New Mexico
Energy Minerals and Natural Resources

Form C-144
June 1, 2004

Oil Conservation Division

1220 South St. Francis Dr.
Santa Fe, NM 87505

For drilling and production facilities, submit to appropriate NMOCD District Office.
For downstream facilities, submit to Santa Fe office

Pit or Below-Grade Tank Registration or Closure

Is pit or below-grade tank covered by a "general plan"? Yes ☒ No ☐
Type of action: Registration of a pit or below-grade tank ☐ Closure of a pit or below-grade tank ☒

Operator: BURLINGTON RESOURCES OIL & GAS COMPANY LP Telephone: 505-326-9700 e-mail address: jclark@br-inc.com
Address: 3401 E. 30TH STREET, FARMINGTON, NM 87402 **29420** Formation: Basin Fruitland Coal
Facility or well name: San Juan 28-5 Unit 81P API #: 30-039- U/L or Qtr/Qtr K Sec 26 T 28N R 5W
County: Rio Arriba Latitude 36.9309 Longitude 107.7368 NAD: 1927 ☒ 1983 ☐ Surface Owner Federal ☒ State ☐ Private ☐ Indian ☐

Pit

Type: Drilling ☒ Production ☐ Disposal ☐
Workover ☐ Emergency ☐
Lined ☐ Unlined ☒
Liner type: Synthetic ☐ Thickness mil Clay ☐
Pit Volume bbl

Below-grade tank

Volume: bbl Type of fluid:
Construction material:
Double-walled, with leak detection? Yes ☐ If not, explain why not.

Depth to ground water (vertical distance from bottom of pit to seasonal high water elevation of ground water.)

Less than 50 feet	(20 points)
50 feet or more, but less than 100 feet	(10 points)
100 feet or more	(0 points)
	0 points

Wellhead protection area: (Less than 200 feet from a private domestic water source, or less than 1000 feet from all other water sources.)

Yes	(20 points)
No	(0 points)
	0 points

Distance to surface water: (horizontal distance to all wetlands, playas, irrigation canals, ditches, and perennial and ephemeral watercourses.)

Less than 200 feet	(20 points)
200 feet or more, but less than 1000 feet	(10 points)
1000 feet or more	(0 points)
	0 points

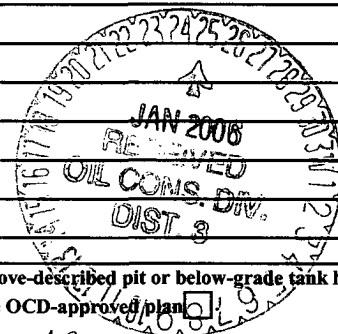
Ranking Score (Total Points) **0 points**

If this is a pit closure: (1) attach a diagram of the facility showing the pit's relationship to other equipment and tanks. (2) Indicate disposal location: (check the onsite box if you are burying in place) onsite ☒ offsite ☐ If offsite, name of facility . (3) Attach a general description of remedial action taken including remediation start date and end date. (4) Groundwater encountered: No ☒ Yes ☐ If yes, show depth below ground surface ft. and attach sample results. (5)

Attach soil sample results and a diagram of sample locations and excavations.

Additional Comments:

Approximate Pit Closure Date - 12/29/05



I hereby certify that the information above is true and complete to the best of my knowledge and belief. I further certify that the above-described pit or below-grade tank has been/will be constructed or closed according to NMOCD guidelines ☐, a general permit ☒, or an (attached) alternative OCD-approved plan ☐.

Date: 1/23/06

Printed Name/Title Joni Clark, Sr. Regulatory Specialist

Signature Joni Clark

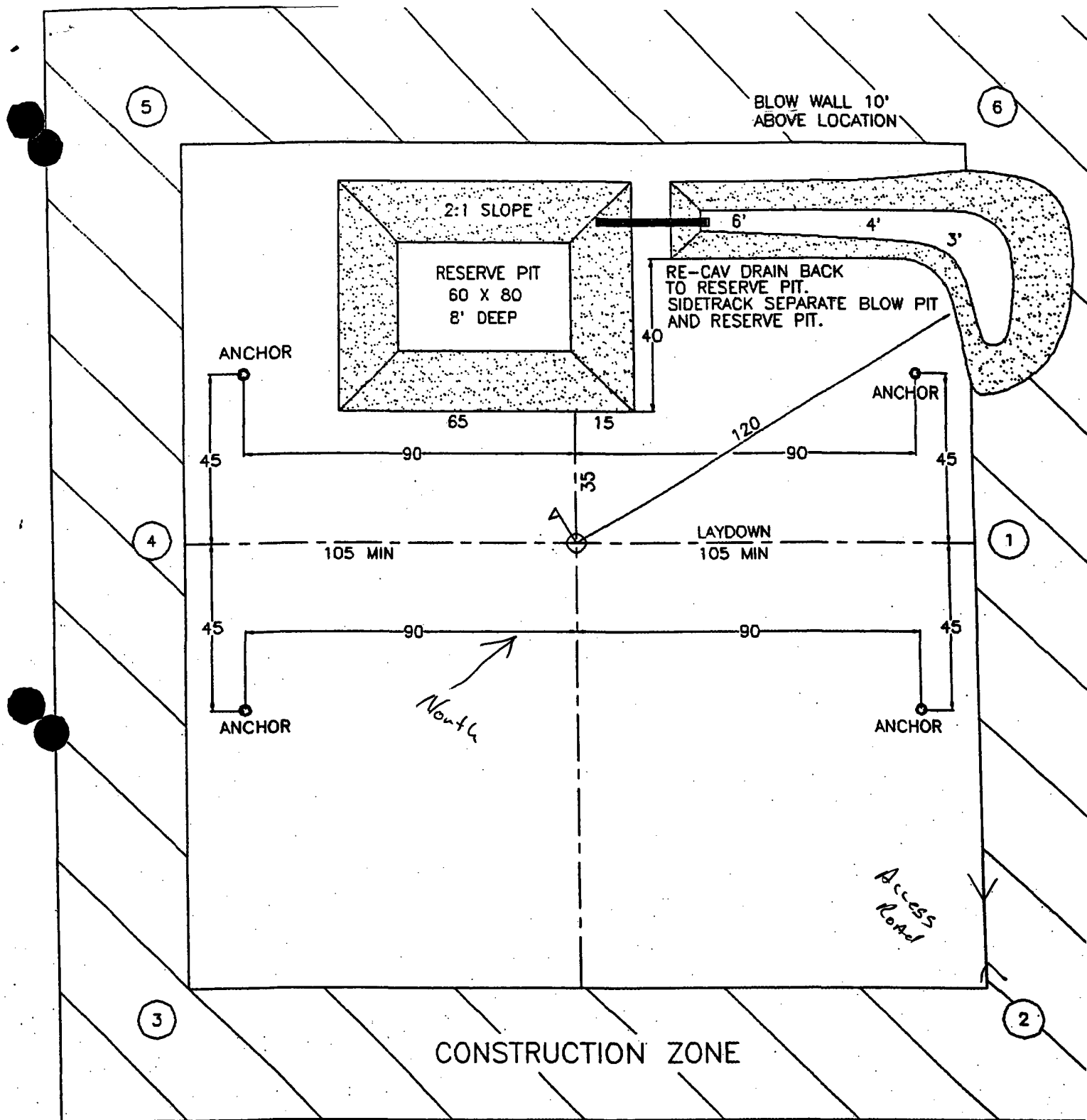
Your certification and NMOCD approval of this application/closure does not relieve the operator of liability should the contents of the pit or tank contaminate ground water or otherwise endanger public health or the environment. Nor does it relieve the operator of its responsibility for compliance with any other federal, state, or local laws and/or regulations.

Approval:

Printed Name/Title DEPUTY OIL & GAS INSPECTOR, DIST. 3

Signature Denny Leaf

Date: JAN 25 2006



Blow pit overflow dike halfway between top and bottom and extend over plastic liner and into blow pit.

BURLINGTON RESOURCES OIL & GAS COMPANY LP