

UNITED STATES
DEPARTMENT OF THE INTERIOR
BUREAU OF LAND MANAGEMENT

2005 DEC 6 PM 12:48

FORM APPROVED
OMB No. 1004-0136
Expires January 31, 2004

APPLICATION FOR PERMIT TO DRILL OR REENTER

RECEIVED

OTC FARMINGTON NM

5. Lease Serial No. SF 078884
6. If Indian, Allottee or Tribe Name
7. If Unit or CA Agreement, Name and No. Canyon Largo Unit
8. Lease Name and Well No. 32660 Canyon Largo Unit 487
9. API Well No. 30-039-29717
10. Field and Pool, or Exploratory Basin Dakota 71599
11. Sec., T., R., M., or Blk. and Survey or Area F Sec 15, T25N-R6W
12. County or Parish Rio Arriba
13. State NM

1a. Type of Work: <input checked="" type="checkbox"/> DRILL <input type="checkbox"/> REENTER
1b. Type of Well: <input type="checkbox"/> Oil Well <input checked="" type="checkbox"/> Gas Well <input type="checkbox"/> Other <input type="checkbox"/> Single Zone <input type="checkbox"/> Multiple Zone
2. Name of Operator Huntington Energy, L.L.C. 208706
3a. Address 6301 Waterford Blvd., Suite 400 Oklahoma City, OK 73118
3b. Phone No. (include area code) (405) 840-9876
4. Location of Well (Report location clearly and in accordance with any State requirements.) At surface SENW, Lot F 1445' FNL & 2105' FWL At proposed prod. zone
14. Distance in miles and direction from nearest town or post office* 35 miles SE from Blanco, NM
15. Distance from proposed* location to nearest property or lease line, ft. (Also to nearest drig. unit line, if any)
16. No. of Acres in lease
17. Spacing Unit dedicated to this well 320 w/2
18. Distance from proposed location* to nearest well, drilling, completed, applied for, on this lease, ft.
19. Proposed Depth 7300'
20. BLM/BIA Bond No. on file NMB000076
21. Elevations (Show whether DF, KDB, RT, GL, etc.) 6564' GL
22. Approximate date work will start*
23. Estimated duration

24. Attachments

The following, completed in accordance with the requirements of Onshore Oil and Gas Order No. 1, shall be attached to this form:

- | | |
|-------------------------------------------------------------------------------------------------------------------------------------------------|----------------------------------------------------------------------------------------------------|
| 1. Well plat certified by a registered surveyor. | 4. Bond to cover the operations unless covered by an existing bond on file (see Item 20 above). |
| 2. A Drilling Plan. | 5. Operator certification. |
| 3. A Surface Use Plan (if the location is on National Forest System Lands, the SUPO shall be filed with the appropriate Forest Service Office). | 6. Such other site specific information and/or plans as may be required by the authorized officer. |

25. Signature <i>Catherine Smith</i>	Name (Printed/Typed) Catherine Smith	Date 12/1/05
Title Land Associate		

Approved by (Signature) <i>John L. Loh</i>	Name (Printed/Typed)	Date 2/1/06
Title Acting AFM	Office	

Application approval does not warrant or certify the the applicant holds legal or equitable title to those rights in the subject lease which would entitle the applicant to conduct operations thereon.

Conditions of approval, if any, are attached.

Title 18 U.S.C. Section 1001 and Title 43 U.S.C. Section 1212, make it a crime for any person knowingly and willfully to make to any department or agency of the United States any false, fictitious or fraudulent statements or representations as to any matter within its jurisdiction.

*(Instructions on reverse)

HOLD C184 FOR *WSL*

DRILLING OPERATIONS AUTHORIZED ARE
SUBJECT TO COMPLIANCE WITH ATTACHED
"GENERAL REQUIREMENTS".

This action is subject to technical and
procedural review pursuant to 43 CFR 3165.3
and appeal pursuant to 43 CFR 3165.4



NMOCDA

Revised June 10, 2003
Instructions on backSubmit to Appropriate District Office
State Lease - 4 Copies
Fee Lease - 3 CopiesDISTRICT II
1301 W. Grand Avenue, Artesia, N.M. 88210DISTRICT III
1000 Rio Brazos Rd., Aztec, N.M. 87410DISTRICT IV
1220 South St. Francis Dr., Santa Fe, NM 87506

OIL CONSERVATION DIVISION

1220 South St. Francis Dr.
Santa Fe, NM 87504-2088☐ AMENDED REPORT

WELL LOCATION AND ACREAGE DEDICATION PLAT

2005 DEC 6 PM 12 48

1 API Number 30-039-29717		2 Pool Code 71599		RECEIVED 070 FARM BASIN Dakota	
3 Property Code 6886 32660 ✓		4 Property Name CANYON LARGO UNIT ✓			5 Well Number 487 ✓
6 GRID No. 208706 ✓		7 Operator Name HUNTINGTON ENERGY, LLC ✓			8 Elevation 6564' ✓

10 Surface Location

UL or lot no.	Section	Township	Range	Lot Idn	Feet from the	North/South line	Feet from the	East/West line	County
F	15	25-N	6-W		1445'	NORTH	2105'	WEST	RIO ARRIBA

11 Bottom Hole Location If Different From Surface

UL or lot no.	Section	Township	Range	Lot Idn	Feet from the	North/South line	Feet from the	East/West line	County
12 Dedicated Acres DK - W/320					13 Joint or Infill		14 Consolidation Code		15 Order No.

NO ALLOWABLE WILL BE ASSIGNED TO THIS COMPLETION UNTIL ALL INTERESTS HAVE BEEN CONSOLIDATED
OR A NON-STANDARD UNIT HAS BEEN APPROVED BY THE DIVISION

FD 3 1/4" N 89-14-40 E B.L.M. BC 2626.9' (C) 1955	1445'	CALC'D CORNER FROM W.C. 40 LKS SOUTH FND. 1955 3 1/4" BLM BC
S 00-56-45 E 2597.6' (C)	2105'	LAT: 36°24.1766' N. (NAD 27) LONG: 107°27.3428' W. (NAD 27)
CALC'D CORNER FROM W.C. 60 LKS SOUTH FND. 1955 3 1/4" BLM BC	15	

17 OPERATOR CERTIFICATION

I hereby certify that the information contained herein
is true and complete to the best of my knowledge and
belief

Catherine Smith
Signature
Catherine Smith
Printed Name
Land Associate
Title
October 13, 2005
Date

18 SURVEYOR CERTIFICATION

I hereby certify that the well location shown on this plat
was plotted from field notes of actual surveys made by
me or under my supervision, and that the same is true
and correct to the best of my belief.

ALAN VUKOBICH
Date
Signature
NEW MEXICO
REGISTERED PROFESSIONAL SURVEYOR
14881
20-9

Certificate Number

OPERATIONS PLAN

Well Name: Canyon Largo Unit #487
Location: 1445' FNL, 2105' FWL, NW/4 Sec 15, T-25-N, R-6-W NMPM
Rio Arriba County, NM
Formation: Basin Dakota
Elevation: 6564' GL

<u>Formation Tops:</u>	<u>Top</u>	<u>Bottom</u>	<u>RMSL</u>
Ojo Alamo	1965'	2165'	4615
Kirkland	2165'	2385'	4415
Fruitland	2385'	2605'	4195
Pictured Cliffs	2605'	2635'	3975
Lewis Shale	2635'	2980'	3945
Huerfano	2980'	4175'	3600
Cliff House	4175'	4235'	2405
Menefee	4235'	4790'	2345
Point Lookout	4790'	5145'	1790
Mancos	5145'	5958'	1435
Gallup (Niobrara)	5958'	6720'	622
Greenhorn	6720'	6784'	-140
Graneros	6784'	6840'	-204
Dakota	6840'	7170'	-260
Morrison	7170'	7300'	-590
TD	7300'		

Logging Program:

Open hole logs – None
Cased hole logs – RST – TD to 5900'; CBL/GR – TD to 5800'
Cores & DST's – none
Mud log – 3200' to TD

Mud Program:

<u>Interval</u>	<u>Type</u>	<u>Weight</u>	<u>Vis.</u>	<u>Fluid Loss</u>
0 – 320'	Spud	8.4-8.9	40-50	no control
320 – 7300'	LSND	8.4-9.0	40-60	8-12

Pit levels will be visually monitored to detect gain or loss of fluid control.

Casing Program:

<u>Hole Size</u>	<u>Depth Interval</u>	<u>Csg. Size</u>	<u>Wt.</u>	<u>Grade</u>
12 1/4"	0' – 320'	8 5/8"	24.0#	WC-50
7 7/8"	0' – 7300'	4 1/2"	11.6#	N-80

Tubing Program:

0' – 7300'	2 3/8"	4.7#	J-55
------------	--------	------	------

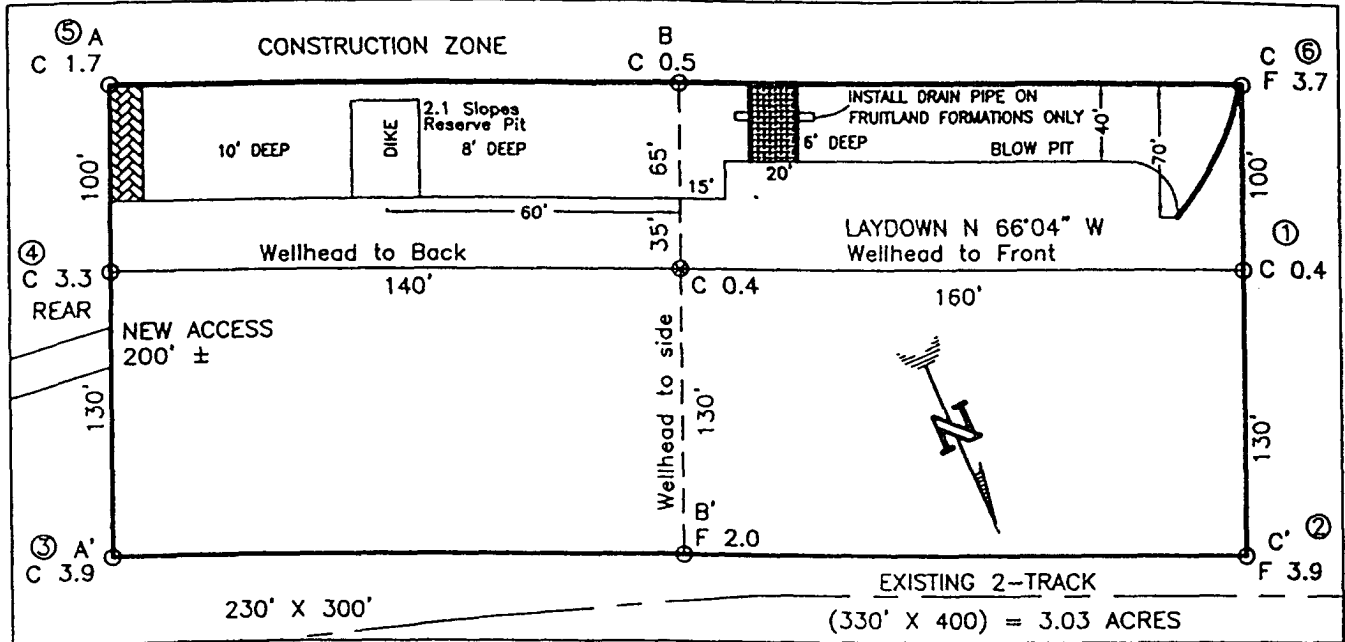
BOP Specifications, Wellhead and Tests:

Surface to TD –

11" 3000 psi minimum double gate BOP stack (Reference Figure #1). After nipple-up prior to drilling out surface casing, ~~rams~~ and casing will be tested to 600 psi for 30 minutes. ~~BOP~~

2" nominal, 3000 psi minimum choke manifold (Reference Figure #3).

BURLINGTON RESOURCES OIL AND GAS COMPANY LP/HUNTINGTON ENERGY, LLC
CANYON LARGO UNIT No. 487, 1445 FNL 2105 FWL
SECTION 15, T-25-N, R-6-W, N.M.P.M., RIO ARRIBA COUNTY, NEW MEXICO
GROUND ELEVATION: 6564, DATE: AUGUST 30, 2005



RESERVE PIT DIKE: TO BE 8' ABOVE DEEP SIDE (OVERFLOW - 3' WIDE AND 1' ABOVE SHALLOW SIDE).
 BLOW PIT: OVERFLOW PIPE HALFWAY BETWEEN TOP AND BOTTOM AND TO EXTEND OVER PLASTIC LINER AND INTO BLOW PIT.

NOTE:

DAGGETT ENTERPRISES, INC. IS NOT LIABLE FOR UNDERGROUND UTILITIES OR PIPELINES. NEW MEXICO ONE CALL TO BE NOTIFIED 48 HOURS PRIOR TO EXCAVATION OR CONSTRUCTION.

ELEV. A-A'	C/L
6580	
6570	
6560	
6540	

ELEV. B-B'	C/L
6580	
6570	
6560	
6540	

ELEV. C-C'	C/L
6580	
6570	
6560	
6540	

NOTE: CONTRACTOR SHOULD CALL ONE-CALL FOR LOCATION OF ANY MARKED OR UNMARKED BURIED PIPELINES OR CABLES ON WELL PAD AND OR ACCESS ROAD AT LEAST TWO (2) WORKING DAYS PRIOR TO CONSTRUCTION.

REVISION	DATE	REVISED BY

Daggett Enterprises, Inc.
 Surveying and Oil Field Services
 P. O. Box 15068 • Farmington, NM 87401
 Phone (505) 326-1772 • Fax (505) 326-6019
 NEW MEXICO P.L.S. No. 14831
 DRAWN BY: A.G.
 ROW: HTG045
 DATE: 09/22/05

Completion Operations:

6" 3000 psi double gate BOP stack (Reference Figure #2). After nipple-up prior to completion, pipe rams and casing top will be tested to 3000 psi for 15 minutes.

Surface to Total Depth:

2" nominal, 3000 psi minimum choke manifold (Reference Figure #3).

Wellhead:

8 5/8" x 4 1/2" x 1 1/2" x 1 1/2" x 3000 psi tree assembly.

General:

- Pipe rams will be actuated once each day and blind rams will be actuated once each trip to test proper functioning.
- An upper Kelly cock valve with handle available and drill string valves to fit each drill string will be available on the rig floors at all times.
- A BOP pit level drill will be conducted weekly for each drilling crew.
- All of the BOP tests and drills will be recorded in the daily drilling reports.
- Blind and pipe rams will be equipped with extension hand wheels.

Cementing:

8 5/8" surface casing –

Cement to surface w/265 sx Class "B" cement w/3% calcium chloride and 1/4#/sx cellophane flakes (312 cu. ft. of slurry, 200% excess to circulate to surface).

WOC 8 hr. prior to drilling out surface casing. Test casing to 600 psi for 30 minutes.

Saw tooth guide shoe on bottom. Bowspring centralizers will be run in accordance with Onshore Order #2.

Production Casing – 4 1/2"

Lead with 700 sx 65/35 Standard Poz w/6% gel, 1/4# Flocele, 10# Gilsonite, 3/10% Halad 9, 1/10% HR5 (1.96 yld). Tail w/900 sx 50/50 Standard Poz w/35 Gel, 9/10% Halad9, 2/10% CFR 3, 5# Gilsonite, 1/4# Flocele (1.47 yld). - Circulate to surface

Alternate Two-stage cement job as follows:

First Stage: Cement to circulate to stage tool @ 5066'. Lead with 700 sx Class "G" 50/50 poz (13#, 1.47 yd) w/3% gel, 0.25 pps Celloflake, 5 pps Gilsonite, 0.25 pps Fluid loss, 0.15% dispersant, 0.1% retarder. WOC 4 hours prior to pumping second stage. (Slurry volume: 1029 cu. ft. Excess slurry: 50%). DV Tool at 5000 ft.

Second Stage: Cement to circulate to surface. Cement with 700 sx Class "G" (12#, 2.9yd) TXI Liteweight cement w/2.5% sodium metasilicate, 2% calcium chloride, 10 pps Gilsonite, 0.5 pps Celloflake, 0.2% antifoam. WOC a minimum of 18 hours prior to cleanout. (Slurry volume: 1914 cu. ft. Excess slurry: 50%). Tail w/50 sx Class "B" w/1/4# Flocele (15.6#, 1.18 yd) (Slurry 59 cu. ft., Excess 50%).

Float shoe on bottom. Three centralizers run every other joint above shoe. Thirty-five centralizers - one every 4th joint to the base of the Ojo Alamo @ 2448'. Two turbolizing type centralizers – one below and one into the base of the Ojo Alamo @ 2448'. Standard centralizers thereafter every fourth joint up to the base of the surface pipe.

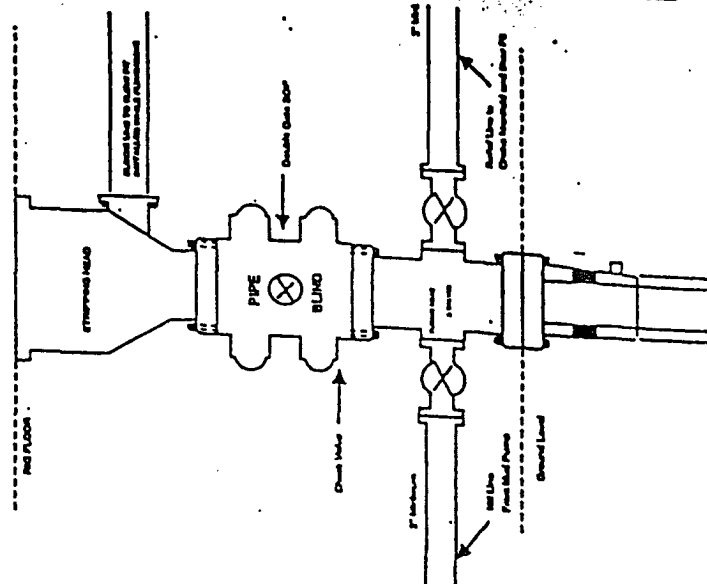
Note: If open hole logs are run, cement volumes will be based on 25% excess over caliper volumes.

Additional Information:

- The Dakota formations will be completed.
- No abnormal temperatures or hazards are anticipated.
- Sufficient LCM will be added to the mud system to maintain well control, if lost circulation is encountered below the top of the Pictured Cliffs.
- The west half of the Section 15 is dedicated to this well.
- This gas is dedicated.
- Anticipated pore pressure

Fruitland Coal	300 psi
Pictured Cliffs	500 psi
Mesa Verde	700 psi
Dakota	3000 psi

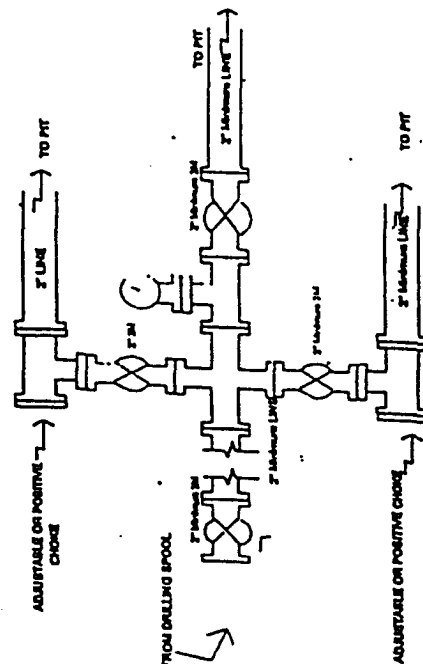
Completion/Workover Rig BOP Configuration 2,000 psi System



Minimum BOP Installation for all Completion/Workover Operations, 7-1/16" bore, 2000 psi minimum working pressure double gate BOP to be equipped with blind and pipe rams. A stripping head to be installed on the top of the BOP. All BOP equipment is 2000 psi working pressure or greater excluding 500 psi stripping head.

Figure #2

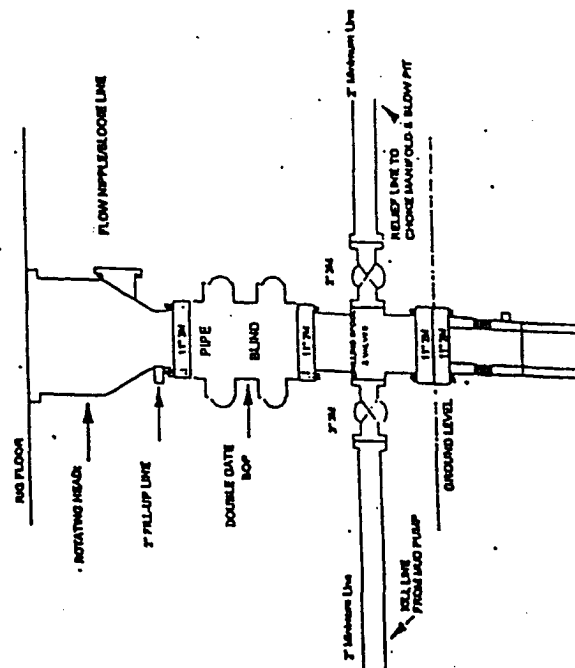
Drilling Rig Choke Manifold Configuration 2000 psi System



Choke manifold installation from Surface Casing Point to Total Depth. 2,000psi working pressure equipment with two choices.

Figure #3

Drilling Rig 2000 psi System



BOP Installation from Surface Casing Point to Total Depth, 11" Bore 10" Head, 2000 psi working pressure double gate BOP to be equipped with blind/rams and pipe rams. A 500 psi stripping head on top of ram preventer. All BOP equipment is 2,000 psi working pressure

Figure #1

