

2005 DEC 2 PM 2 08

FORM APPROVED
OMB No. 1004-0136
Expires January 31, 2004

UNITED STATES
DEPARTMENT OF THE INTERIOR
BUREAU OF LAND MANAGEMENT

RECEIVED
070 FARMINGTON NM

APPLICATION FOR PERMIT TO DRILL OR REENTER

1a. Type of Work: ☒ DRILL ☐ REENTER

1b. Type of Well: ☐ Oil Well ☒ Gas Well ☐ Other ☐ Single Zone ☐ Multiple Zone

2. Name of Operator

Huntington Energy, L.L.C. 208706

3a. Address 301 Waterford Blvd., Suite 400
Oklahoma City, OK 73118

3b. Phone No. (include area code)
(405) 840-9876

4. Location of Well (Report location clearly and in accordance with any State requirements)

At surface SESE Lot P, 820' FSL & 920' FEL
At proposed prod. zone FSL FEL

14. Distance in miles and direction from nearest town or post office*

35 miles SE from Blanco, NM

15. Distance from proposed*
location to nearest
property or lease line, ft.
(Also to nearest drig. unit line, if any)

16. No. of Acres in lease

1922.40

17. Spacing Unit dedicated to this well

320 E2

18. Distance from proposed location*
to nearest well, drilling, completed,
applied for, on this lease, ft.

19. Proposed Depth

7400'

20. BLM/BIA Bond No. on file

NMB000076

21. Elevations (Show whether DF, KDB, RT, GL, etc.)

6577' GL

22. Approximate date work will start*

23. Estimated duration

24. Attachments

The following, completed in accordance with the requirements of Onshore Oil and Gas Order No. 1, shall be attached to this form:

1. Well plat certified by a registered surveyor.
2. A Drilling Plan.
3. A Surface Use Plan (if the location is on National Forest System Lands, the SUPO shall be filed with the appropriate Forest Service Office).

4. Bond to cover the operations unless covered by an existing bond on file (see Item 20 above).
5. Operator certification.
6. Such other site specific information and/or plans as may be required by the authorized officer.

25. Signature

Catherine Smith

Name (Printed/Typed)

Catherine Smith

Date

11/30/05

Title

Land Associate

Approved by (Signature)

[Signature]

Name (Printed/Typed)

Date

3/15/06

Title

AFM

Office

FED

Application approval does not warrant or certify the the applicant holds legal or equitable title to those rights in the subject lease which would entitle the applicant to conduct operations thereon.

Conditions of approval, if any, are attached.

Title 18 U.S.C. Section 1001 and Title 43 U.S.C. Section 1212, make it a crime for any person knowingly and willfully to make to any department or agency of the United States any false, fictitious or fraudulent statements or representations as to any matter within its jurisdiction.

*(Instructions on reverse)

DRILLING OPERATIONS AUTHORIZED ARE
SUBJECT TO COMPLIANCE WITH ATTACHED
"GENERAL REQUIREMENTS".

This action is subject to technical and
procedural review pursuant to 43 CFR 3165.3
and appeal pursuant to 43 CFR 3165.4

NMOCD

8

DISTRICT I
P.O. Box 1980, Hobbs, N.M. 88241-1980

DISTRICT II
1301 W. Grand Avenue, Artesia, N.M. 88210

DISTRICT III
1000 Rio Brazos Rd., Artec, N.M. 87410

DISTRICT IV
1220 South St. Francis Dr., Santa Fe, NM 87505

State of New Mexico
Energy, Minerals & Natural Resources Department

OIL CONSERVATION DIVISION

1220 South St. Francis Dr.
Santa Fe, NM 87504-2088

Form C-102

Revised June 10, 2003

Instructions on back

Submit to Appropriate District Office

State Lease - 4 Copies

Fee Lease - 3 Copies

☐ AMENDED REPORT

WELL LOCATION AND ACREAGE DEDICATION PLAT

*API Number 30-039-29713	*Pool Code 71599	*Pool Name Basin Dakota
*Property Code 6886 32660	*Property Name CANYON LARGO UNIT	*Well Number 483
*OGRID No. 208706	*Operator Name HUNTINGTON ENERGY, LLC	*Elevation 6577'

10 Surface Location

UL or lot no.	Section	Township	Range	Lot Idn	Feet from the	North/South line	Feet from the	East/West line	County
P	9	25-N	6-W		820'	SOUTH	920'	EAST	RIO ARRIBA

11 Bottom Hole Location If Different From Surface

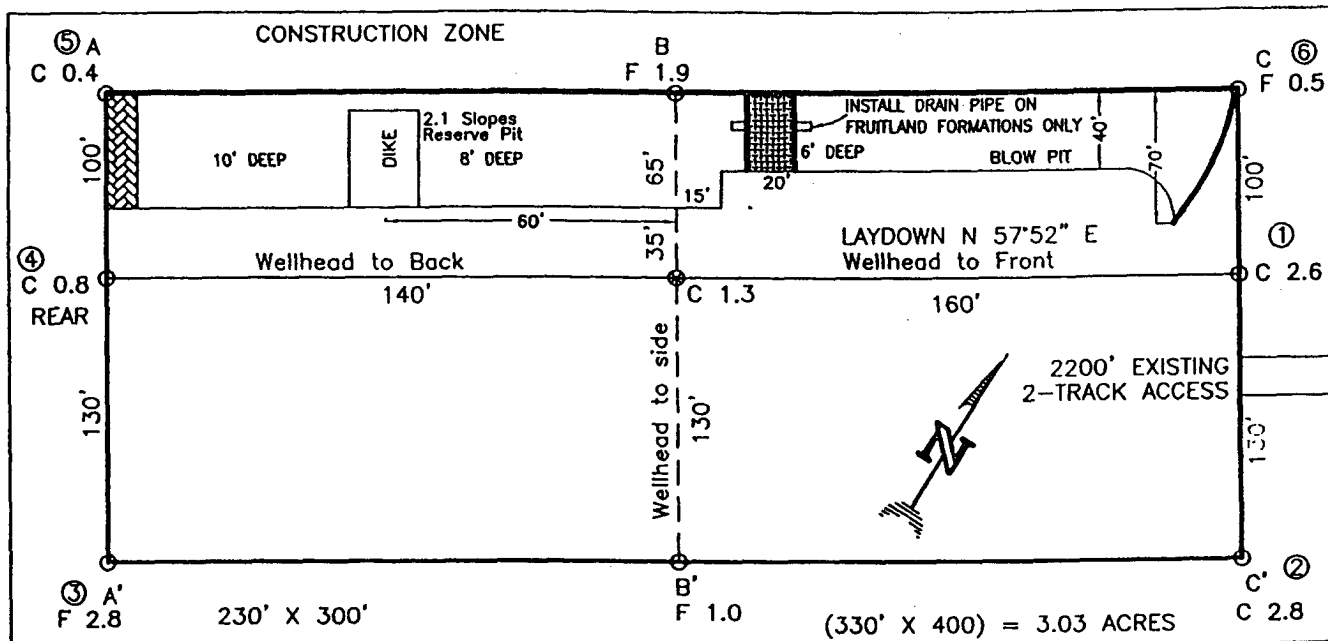
UL or lot no.	Section	Township	Range	Lot Idn	Feet from the	North/South line	Feet from the	East/West line	County
12 Dedicated Acres DK-E/320					13 Joint or Infill		14 Consolidation Code		15 Order No.

NO ALLOWABLE WILL BE ASSIGNED TO THIS COMPLETION UNTIL ALL INTERESTS HAVE BEEN CONSOLIDATED
OR A NON-STANDARD UNIT HAS BEEN APPROVED BY THE DIVISION

16

--	--	--	--

BURLINGTON RESOURCES OIL AND GAS COMPANY LP/HUNTINGTON ENERGY, LLC
 CANYON LARGO UNIT No. 483, 820 FSL 920 FEL
 SECTION 9, T-25-N, R-6-W, N.M.P.M., RIO ARriba COUNTY, NEW MEXICO
 GROUND ELEVATION: 6577, DATE: AUGUST 1, 2005



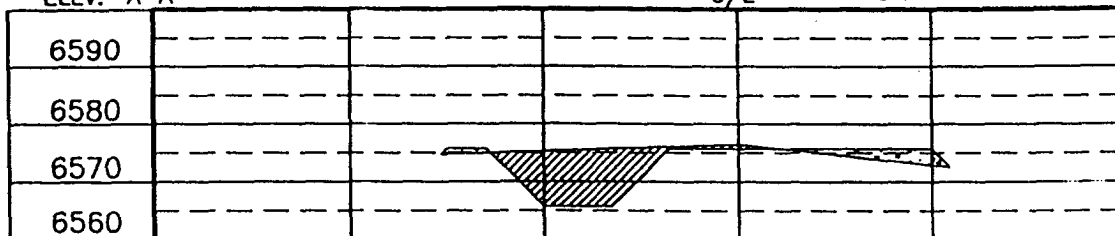
RESERVE PIT DIKE: TO BE 8' ABOVE DEEP SIDE (OVERFLOW - 3' WIDE AND 1' ABOVE SHALLOW SIDE).
 BLOW PIT: OVERFLOW PIPE HALFWAY BETWEEN TOP AND BOTTOM AND TO EXTEND OVER PLASTIC LINER AND INTO BLOW PIT.

NOTE:

DAGGETT ENTERPRISES, INC. IS NOT LIABLE FOR UNDERGROUND UTILITIES OR PIPELINES. NEW MEXICO ONE CALL TO BE NOTIFIED 48 HOURS PRIOR TO EXCAVATION OR CONSTRUCTION.

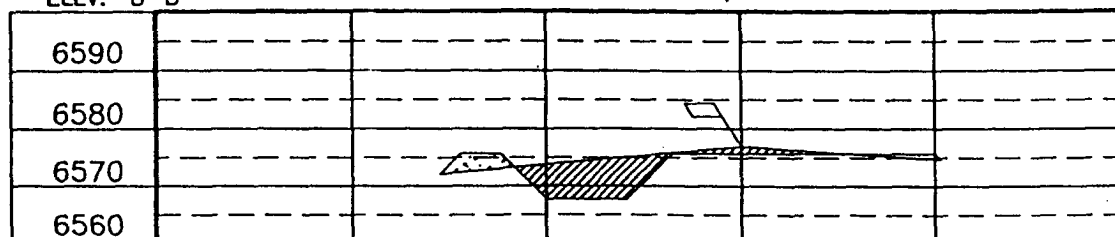
ELEV. A-A'

C/L



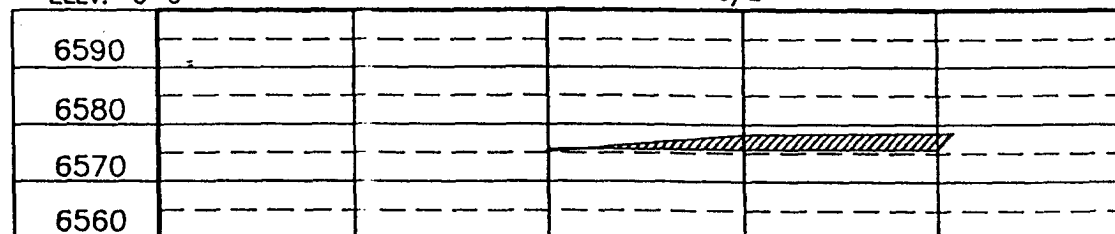
ELEV. B-B'

C/L



ELEV. C-C'

C/L



NOTE: CONTRACTOR SHOULD CALL ONE-CALL FOR LOCATION OF ANY MARKED OR UNMARKED BURIED PIPELINES OR CABLES ON WELL PAD AND OR ACCESS ROAD AT LEAST TWO (2) WORKING DAYS PRIOR TO CONSTRUCTION.

DATE	REVISED BY	Daggett Enterprises, Inc. Surveying and Oil Field Services P. O. Box 15068 • Farmington, NM 87401 Phone (505) 326-1772 • Fax (505) 326-6019 NEW MEXICO P.L.S. No. 14831 C.S.P.E. NTGO+ICFB	DATE
DATE	REVISED BY		DATE
DRAWN BY: A.G. ROW#: MT0041			

OPERATIONS PLAN

Well Name: Canyon Largo Unit #483
Location: 820' FSL, 920' FEL, SE/4 Sec 9, T-25-N, R-6-W NMPM
Rio Arriba County, NM
Formation: Basin Dakota
Elevation: 6577' GL

<u>Formation Tops:</u>	<u>Top</u>	<u>Bottom</u>	<u>RMSL</u>
Ojo Alamo	1978'	2178'	4615
Kirkland	2178'	2378'	4415
Fruitland	2378'	2631'	4215
Pictured Cliffs	2631'	2683'	3962
Lewis Shale	2683'	3013'	3910
Huerfanito	3013'	4208'	3580
Cliff House	4208'	4268'	2385
Menefee	4268'	4828'	2325
Point Lookout	4828'	5093'	1765
Mancos	5093'	5998'	1500
Gallup (Niobrara)	5998'	6763'	595
Greenhorn	6763'	6823'	-170
Graneros	6823'	6876'	-230
Dakota	6876'	7253'	-283
Morrison	7253'	7400'	-660
TD	7400'		

Logging Program:

Open hole logs – Platform Express
Cased hole logs – RST – TD to 5900'; CBL/GR – TD to 5800'
Cores & DST's – none
Mud log – 4000' to TD

Mud Program:

<u>Interval</u>	<u>Type</u>	<u>Weight</u>	<u>Vis.</u>	<u>Fluid Loss</u>
0 – 320'	Spud	8.4-8.9	40-50	no control
320 – 7400'	LSND	8.4-9.0	40-60	8-12

Pit levels will be visually monitored to detect gain or loss of fluid control.

Casing Program:

<u>Hole Size</u>	<u>Depth Interval</u>	<u>Csg. Size</u>	<u>Wt.</u>	<u>Grade</u>
12 1/4"	0' – 320'	8 5/8"	24.0#	WC-50
7 7/8"	0' – 7400'	4 1/2"	11.6#	N-80

Tubing Program:

0' – 7400'	2 3/8"	4.7#	J-55
------------	--------	------	------

BOP Specifications, Wellhead and Tests:

Surface to TD –

11" 3000 psi minimum double gate BOP stack (Reference Figure #1). After nipple-up prior to drilling out surface casing, ~~rams~~ and casing will be tested to 600 psi for 30 minutes.

2" nominal, 3000 psi minimum choke manifold (Reference Figure #3).

Completion Operations:

6" 3000 psi double gate BOP stack (Reference Figure #2). After nipple-up prior to completion, pipe rams and casing top will be tested to 3000 psi for 15 minutes.

Surface to Total Depth:

2" nominal, 3000 psi minimum choke manifold (Reference Figure #3).

Wellhead:

8 5/8" x 4 1/2" x 1 1/2" x 1 1/2" x 3000 psi tree assembly.

General:

- Pipe rams will be actuated once each day and blind rams will be actuated once each trip to test proper functioning.
- An upper Kelly cock valve with handle available and drill string valves to fit each drill string will be available on the rig floors at all times.
- A BOP pit level drill will be conducted weekly for each drilling crew.
- All of the BOP tests and drills will be recorded in the daily drilling reports.
- Blind and pipe rams will be equipped with extension hand wheels.

Cementing:

8 5/8" surface casing –

Cement to surface w/265 sx Class "B" cement w/3% calcium chloride and 1/4#/sx cellophane flakes (312 cu. ft. of slurry, 200% excess to circulate to surface).

WOC 8 hr. prior to drilling out surface casing. Test casing to 600 psi for 30 minutes.

Saw tooth guide shoe on bottom. Bowspring centralizers will be run in accordance with Onshore Order #2.

Production Casing – 4 1/2"

Lead with 700 sx 65/35 Standard Poz w/6% gel, 1/4# Flocele, 10# Gilsonite, 3/10% Halad 9, 1/10% HR5 (1.96 yld). Tail w/900 sx 50/50 Standard Poz w/35 Gel, 9/10% Halad9, 2/10% CFR 3, 5# Gilsonite, 1/4# Flocele (1.47 yld).

Alternate Two-stage cement job as follows:

First Stage: Cement to circulate to stage tool @ 5066'. Lead with 700 sx Class "G" 50/50 poz (13#, 1.47 yd) w/3% gel, 0.25 pps Celloflake, 5 pps Gilsonite, 0.25 pps Fluid loss, 0.15% dispersant, 0.1% retarder. WOC 4 hours prior to pumping second stage. (Slurry volume: 1029 cu. ft. Excess slurry: 50%). DV Tool at 5000 ft.

Second Stage: Cement to circulate to surface. Cement with 700 sx Class "G" (12#, 2.9yd) TXI Liteweight cement w/2.5% sodium metasilicate, 2% calcium chloride, 10 pps Gilsonite, 0.5 pps Celloflake, 0.2% antifoam. WOC a minimum of 18 hours prior to cleanout. (Slurry volume: 1914 cu. ft. Excess slurry: 50%). Tail w/50 sx Class "B" w/1/4# Flocele (15.6#, 1.18 yd) (Slurry 59 cu. ft., Excess 50%).

Float shoe on bottom. Three centralizers run every other joint above shoe. Thirty-five centralizers - one every 4th joint to the base of the Ojo Alamo @ 2448'. Two turbolizing type centralizers – one below and one into the base of the Ojo Alamo @ 2448'. Standard centralizers thereafter every fourth joint up to the base of the surface pipe.

Note: If open hole logs are run, cement volumes will be based on 25% excess over caliper volumes.

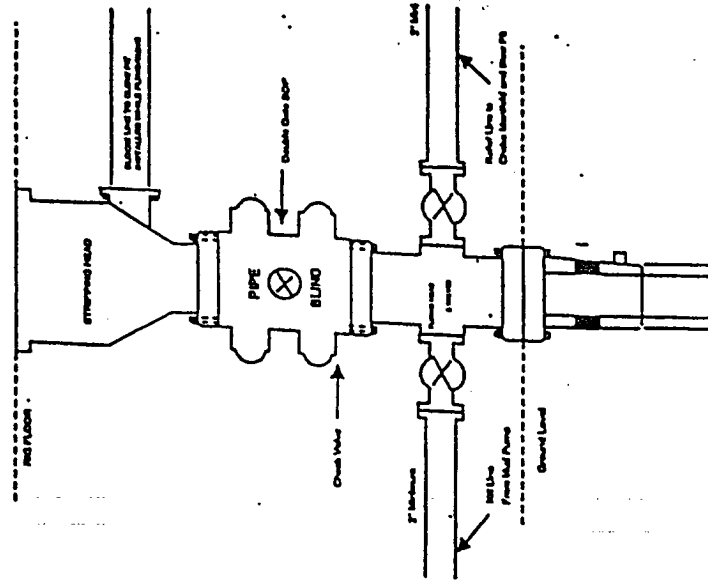
Additional Information:

The Dakota formations will be completed.

- No abnormal temperatures or hazards are anticipated.
- Sufficient LCM will be added to the mud system to maintain well control, if lost circulation is encountered below the top of the Pictured Cliffs.
- The east half of the Section 9 is dedicated to this well.
- This gas is dedicated.
- Anticipated pore pressure

Fruitland Coal	300 psi
Pictured Cliffs	500 psi
Mesa Verde	700 psi
Dakota	3000 psi

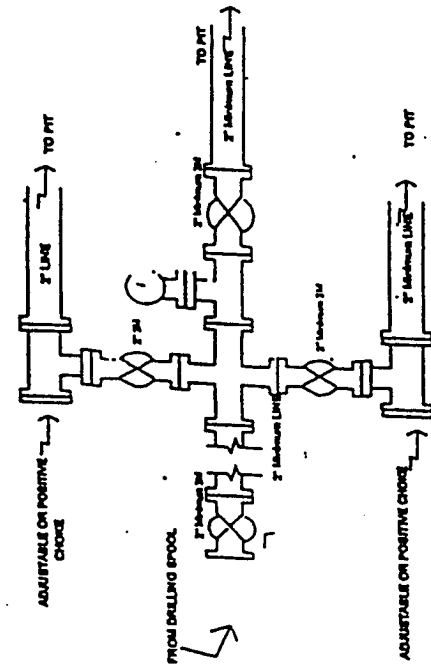
Completion/Workover Rig BOP Configuration 2,000 psi System



Minimum BOP Installation for all Completion/Workover Operations. 7-1/16" bore, 2000 psi minimum working pressure double gate BOP to be equipped with blind and pipe rams. A stripping head to be installed on the top of the BOP. All BOP equipment is 2000 psi working pressure or greater excluding 600 psi stripping head.

Figure #2

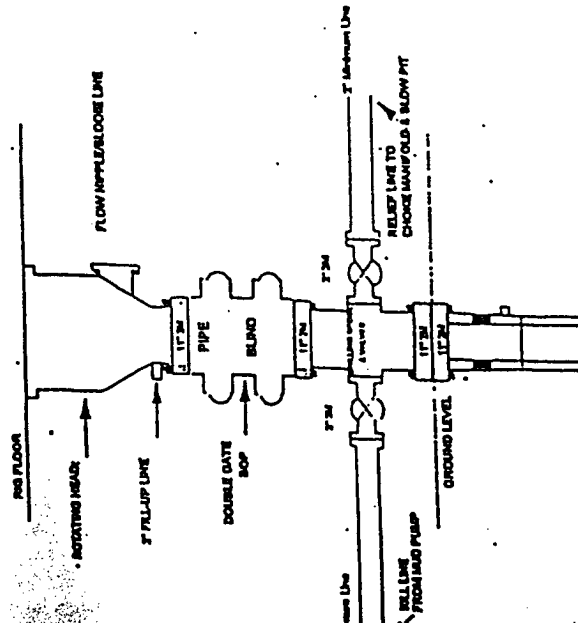
Drilling Rig Choke Manifold Configuration 2000 psi System



Choke manifold installation from Surface Casing Point to Total Depth. 2,000psi working pressure equipment with two chokes.

Figure #3

Drilling Rig 2000 psi System



BOP Installation from Surface Casing Point to Total Depth. 11" Bore 10" Nominal, 2000 psi working pressure double gate BOP to be equipped with blind rams and pipe rams. A 600 psi rotating head on top of ram preventer. All BOP equipment is 2,000 psi working pressure

Figure #1