

UNITED STATES
DEPARTMENT OF INTERIOR
BUREAU OF LAND MANAGEMENT

FORM APPROVED
Budget Bureau No. 1004-0135
Expires: March 31, 1993

SUNDRY NOTICE AND REPORTS ON WELLS

Do not use this form for proposals to drill or to deepen or reentry to a different reservoir. Use "APPLICATION TO DRILL" for permit for such proposals

5. Lease Designation and Serial No.
SE-078768

6. If Indian, Allottee or Tribe Name

7. If Unit or CA, Agreement Designation

8. Well Name and No.
ROSA UNIT #344

9. API Well No.
30-039-26249

10. Field and Pool, or Exploratory Area
BASIN FRUITLAND COAL

11. County or Parish, State
RIO ARRIBA, NM

SUBMIT IN TRIPLICATE

1. Type of Well
Oil Well ☒ Gas Well ☐ Other ☐

2. Name of Operator
WILLIAMS PRODUCTION COMPANY

3. Address and Telephone No.
PO BOX 3102 MS 25-2, TULSA, OK 74101 (918) 573-6254

4. Location of Well (Footage, Sec., T., R., M., or Survey Description)
1755' FSL & 1260' FWL, NW/4 SW/4 SEC 25-T31N-R05W



CHECK APPROPRIATE BOX(S) TO INDICATE NATURE OF NOTICE, REPORT, OR OTHER DATA

TYPE OF SUBMISSION	TYPE OF ACTION
Notice of Intent	Abandonment
X Subsequent Report	Recompletion
Final Abandonment	Plugging Back
	Casing Repair
	Altering Casing
	Other <u>Pumping Unit & Rod Installation</u>
	Change of Plans
	New Construction
	Non-Routine Fracturing
	Water Shut-Off
	Conversion to Injection
	Dispose Water
	(Note: Report results of multiple completion on Well Completion or Recompletion Report and Log form.)

13. Describe Proposed or Completed Operations (Clearly state all pertinent details, and give pertinent dates, including estimated date of starting any proposed work. If well is directionally drilled, give subsurface locations and measured and true vertical depths for all markers and zones pertinent to this work.)*

05-23-2005 MIRU, check well pressures. tbq - 520 psi, csg - 520 psi. Blow well down, tbq blew down, csg will not blow down completely. NDWH & NUBOP. RU floor, guard rails etc. Test air lines. Pull tbq hanger. RIH with 1jt to tag for fill. Tagged approx @ 3281'. Start air unit. Tbg pressured up to 1500 psi. Would not bleed down. Blow down tbq, tbq plugged. POOH with 10 stds of 2 3/8" tbq, pin ends look bad. SDFN.

05-24-2005 Ck well pressures. Csg-890 psi. Tbg-840 psi. Blow well down. Rig up air unit & unload well @ 2653'. Well circulating good. RIH w/tbg to 3260'. Unload well w/air. RIH & tagged fill @ 3281'. Start air & clean fill to PBTD @ 3283'. Pump sweeps & circulate clean. Shut down air unit & let well free flow for 2 hrs. RIH to tag for fill, tag PBTD @ 3283', no fill. POOH & tally all 2 3/8" tbq. Had 14 jts of tbq scaled up. LD, RIH w/mud anchor, F Nipple - 1.78" and 90 jts of 2 3/8" tbq.

05-25-2005 Ck well pressures. Csg-780 psi. Tbg-740 psi. Blow well down. Continue to TIH w/ 2 3/8" tbq as follows: mud anchor on bottom, 1.78" "F" nipple, 102 jts tbq, 10' sub & 1 jt tbq. End of mud anchor @ 3280', "F" nipple @ 3252'. NDBOP & NUWH, RU flow T & pumping equipment. RIH w/ rids & pump as follows: 2" x 1' 1/4" x 8' x 12' RHAC insert pump, 4' pony rod, 129 3/4" rods, 2' & 8' pony rods, 1 1/4" x 22' polish rod w/ liner. Seat pump, load tbq, test tbq to 500 psi, stroke pump to 500 psi, hand horsehead. Turn well to production department, release rig @ 1600 hrs.

14. I hereby certify that the foregoing is true and correct

Signed Tracy Ross
Tracy Ross

Title Sr. Production Analyst

Date June 8, 2006

(This space for Federal or State office use)

Approved by _____

Title _____

Conditions of approval, if any:

ACCEPTED FOR RECORD

FEB 17 2006

FARMINGTON FIELD OFFICE

BY [Signature]

Title 18 U.S.C. Section 1001, makes it a crime for any person knowingly and willfully to make to any department or agency of the United States any false, fictitious or fraudulent statements or representations as to any matter within its jurisdiction.

NMOCD

**ROSA UNIT #344
FRUITLAND COAL**

K.B. = 14'

Spud: 08/26/00
Completed: 09/25/00
First Delivery: 12/15/00
Pumping Unit: 05/25/05

Location:

1755' FSL and 1260' FWL
NW/4 SW/4 Sec 25(L), T31N, R5W
Rio Arriba, New Mexico
Elevation: 6453' GR

API #: 30-039-26249

Top	Depth
Ojo Alamo	2608'
Kirtland	2711'
Fruitland	3115'
Pictured Cliffs	3289'

Perforations: 4 SPF. No
other information in the
well file.

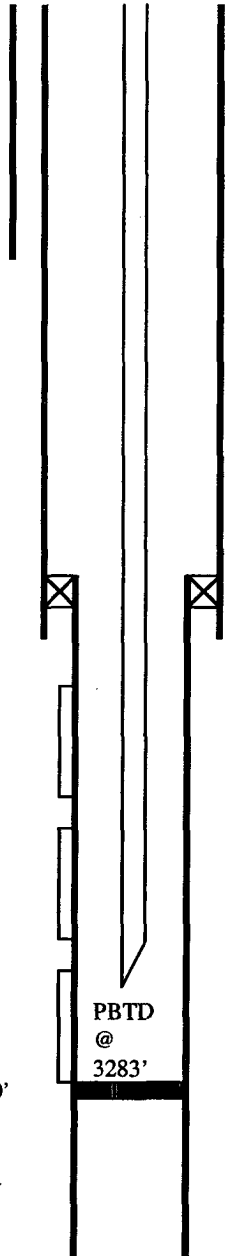
3202' - 3212'

3230' - 3240'

3252' - 3282'

Inflatable Packer @ 3290'

Open Hole Below Packer



Surface: 6 jts, 9-5/8", 36#, K-55 @ 298'.
Cemented with 130 sx cmt

Intermediate: 70 jts, 7", 20#, K-55 @ 3200'.
Cemented with 575 sx cmt

Liner hanger @ 3097'

Tubing: All 2-3/8", 4.7#, J-55, EUE, 8RD. Top to
Bottom: 1 Jt., 10' Sub, 102 Jts. 1.78" "F" Nipple,
Mud Anchor. 103 Jts. Total, "F" Nipple @ 3252',
Mud Anchor @ 3280'

Rods: All Norris, 3/4", Type 54, Grade "D", Slick.
Top to bottom: 1-1/4" x 22' Polish Rod, 1-1/2" x
10' Polished Rod Liner, 8' Pony, 2' Pony, 129, 4'
Pony

Pump: Harbison Fisher 2" x 1-1/4" x 8' x 12'
RHAC-Z, 1" x 6' Dip Tube

Last Depth Reached: 3283'

Liner: 4 jts, 5-1/2", 17#, J-55 @ 3284'

TD @ 3412'

Hole Size	Casing	Cement	Volume	Top of Cmt
12-1/4"	9-5/8", 36#	130 sx	188 cu. ft.	Surface
8-3/4"	7", 20#	575 sx	1082 cu. ft.	Surface
6-1/4"	5-1/2", 17#	Did not cmt	N/A	N/A

Xander Buck, 06/30/05

Installed pumping unit

8F 078768

ROSA UNIT #344
FRUITLAND COAL

2005 JUL 27 AM 11 31

RECEIVED
070 FARMINGTON NM

K.B. = 14'

Location:

1755' FSL and 1260' FWL
NW/4 SW/4 Sec 25(L), T31N, R5W
Rio Arriba, New Mexico
Elevation: 6453' GR

API #: 30-039-26249

Spud: 08/26/00
Completed: 09/25/00

First Delivery: 12/15/00

Pumping Unit: 05/25/05

Surface: 6 jts, 9-5/8", 36#, K-55 @ 298'.
Cemented with 130 sx cmt

Top Depth

Ojo Alamo 2608'

Kirtland 2711'

Fruitland 3115'

Pictured Cliffs 3289'

Liner hanger @ 3097'

Intermediate: 70 jts, 7", 20#, K-55 @ 3200'.
Cemented with 575 sx cmt

Tubing: All 2-3/8", 4.7#, J-55, EUE, 8RD. Top to
Bottom: 1 Jt., 10' Sub, 102 Jts. 1.78" "F" Nipple,
Mud Anchor. 103 Jts. Total, "F" Nipple @ 3252',
Mud Anchor @ 3280'

Rods: All Norris, 3/4", Type 54, Grade "D", Slick.
Top to bottom: 1-1/4" x 22' Polish Rod, 1-1/2" x
10' Polished Rod Liner, 8' Pony, 2' Pony, 129, 4'
Pony

Pump: Harbison Fisher 2" x 1-1/4" x 8' x 12'
RHAC-Z, 1" x 6' Dip Tube

Last Depth Reached: 3283'

Liner: 4 jts, 5-1/2", 17#, J-55 @ 3284'

3202' - 3212'

Perforations: 4 SPF. No
other information in the
well file.

3230' - 3240'

3252' - 3282'

FBTD @ 3283'

Inflatable Packer @ 3290'

Open Hole Below Packer

TD @ 3412'

Hole Size	Casing	Cement	Volume	Top of Cmt
12-1/4"	9-5/8", 36#	130 sx	188 cu. ft.	Surface
8-3/4"	7", 20#	575 sx	1082 cu. ft.	Surface
6-1/4"	5-1/2", 17#	Did not cmt	N/A	N/A

Xander Buck, 06/30/05