

UNITED STATES
DEPARTMENT OF THE INTERIOR
BUREAU OF LAND MANAGEMENT

SUBMIT IN
DUPLICATE

(See other instructions on
reverse side)

FORM APPROVED
OMB NO. 1004-0137
Expires: February 28, 1995

5. LEASE DESIGNATION AND LEASE NO.
NMSF-078771

6. IF INDIAN, ALLOTTEE OR

7. UNIT AGREEMENT NAME

WELL COMPLETION OR RECOMPLETION REPORT AND LOG

1a. TYPE OF WELL: OIL WELL GAS WELL DRY OTHER

b. TYPE OF COMPLETION:
 NEW WELL WORKOVER DEEPEN PLUG BACK DIFF. RESVR. OTHER

2. NAME OF OPERATOR
WILLIAMS PRODUCTION COMPANY

3. ADDRESS AND TELEPHONE NO.
P.O. BOX 3102 MS 25-1 TULSA, OK 74101 (918) 573-6254

4. LOCATION OF WELL (Report location clearly and in accordance with any State requirements)*
At Surface: 2150' FNL & 1080' FWL
At top production interval reported below:
At total depth:

8. FARM OR LEASE NAME, WELL NO.
ROSA UNIT #21C

9. API WELL NO.
30-039-26946

10. FIELD AND POOL, OR WILDCAT
BLANCO MESAVERDE

11. SEC., T.R.M., OR BLOCK AND
SURVEY OR AREA
SW/4 NW/4 SEC 23-31N-6W

12. COUNTY OR RIO ARRIBA 13. STATE NEW MEXICO

14. PERMIT NO. DATE ISSUED
15. DATE SPUDDED 06/14/05 16. DATE T.D. REACHED 06/26/05 17. DATE COMPLETED (READY TO PRODUCE) 09/06/05 18. ELEVATIONS (DK, RKB, RT, GR, ETC.)* 6216' GR

19. ELEVATION CASINGHEAD

20. TOTAL DEPTH, MD & TVD 5990' MD 21. PLUG, BACK T.D., MD & TVD 5955' 22. IF MULTICOMP., HOW MANY 23. INTERVALS DRILLED BY ROTARY TOOLS x CABLE TOOLS

24. PRODUCING INTERVAL(S), OF THIS COMPLETION - TOP, BOTTOM, NAME (MD AND TVD)* BLANCO MESAVERDE 4996' - 5799' 25. WAS DIRECTIONAL SURVEY MADE YES

26. TYPE ELECTRIC AND OTHER LOGS RUN 27. WAS WELL CORED NO

28. CASING REPORT (Report all strings set in well)					
CASING SIZE/GRADE	WEIGHT, LB./FT	DEPTH SET (MD)	HOLE SIZE	TOP OF CEMENT, CEMENTING RECORD	AMOUNT PULLED
9-5/8", K-55	36#	256'	12 1/4"	150 SX - SURFACE	
7", J-55	20#	3520'	8 3/4"	550 SX - SURFACE	

29. LINER RECORD				30. TUBING RECORD			
SIZE	TOP (MD)	BOTTOM (MD)	SACKS CEMENT*	SCREEN (MD)	SIZE	DEPTH SET (MD)	PACKER SET (MD)
4 1/2", 10.5# K-55	3722'	6254'	575 SX		2-3/8", J-55, 4.7#	5784'	

31. PERFORATION RECORD (Interval, size, and number)		32. ACID, SHOT, FRACTURE, CEMENT SQUEEZE, ETC.	
Interval	Size	Depth Interval (MD)	Amount and Kind of Material Used
4996' - 5465'	3/4" TOC = TOL	4996' - 5465'	Fraced w/ 9540# 14/30 Lite Prop 125 followed by 3100# 20/40 brown sand
5497' - 5799'		5497' - 5799'	Fraced w/ 9420# 14/30 Lite Prop 125 followed by 3040# 20/40 brown sand

33. PRODUCTION

DATE OF FIRST PRODUCTION		PRODUCTION METHOD (Flowing, gas lift, pumping-size and type of pump)				WELL STATUS (PRODUCING OR SI)	
09/19/05		Flowing				Producing	
DATE OF TEST	TESTED	CHOKE SIZE	PROD'N FOR TEST PERIOD	OIL - BBL	GAS - MCF	WATER - BBL	GAS-OIL RATIO
09/19/05		3/4"			389		
FLOW TBG PRESS	CASING PRESSURE	CALCULATED 24-HOUR RATE		OIL - BBL	GAS - MCF	WATER - BBL	OIL GRAVITY-API (CORR.)
235	625						

34. DISPOSITION OF GAS (Sold, used for fuel, vented, etc.): TO BE SOLD TEST; WITNESSED BY: Sherry Brooks

35. LIST OF ATTACHMENTS: SUMMARY OF POROUS ZONES, WELLBORE DIAGRAM

36. I hereby certify that the foregoing and attached information is complete and correct as determined from all available records

SIGNED Tracy Ross TITLE Sr. Production Analyst DATE February 27, 2006

ACCEPTED FOR RECORDS
MAR 03 2006
FARMINGTON FIELD OFFICE
BY db

NMOC D

37. SUMMARY OF POROUS ZONES: (Show all important zones of porosity and contents thereof; core intervals, and all drill-stem tests, including depth interval tested, cushion used, time (on) open, flowing and shut-in pressures, and recoveries)						38. GEOLOGIC MARKERS		
FORMATION	TOP	BOTTOM	DESCRIPTION, CONTENTS, ETC.	NAME	TOP		TRUE VERTICAL DEPTH	
					MEASURED DEPTH			
					CLIFFHOUSE	5229'	5306'	
					MENEPEE	5306'	5496'	
					POINT LOOKOUT	5496'	5820'	
					MANCOS	5820'		

**ROSA UNIT #21C
BLANCO MESAVERDE**

Spud date: 06/14/05

Completed: 09/06/05

1ST Delivery: 09/19/05

Location:

2150' FNL and 1080' FWL
SW/4 NW/4 Sec 23(E), T31N R065W
Rio Arriba, New Mexico

Elevation: 6216' GR
API #: 30-039-26946
KB = 14'

6 jts 9-5/8", 36#, K-55, ST&C csg. Landed @ 256'.

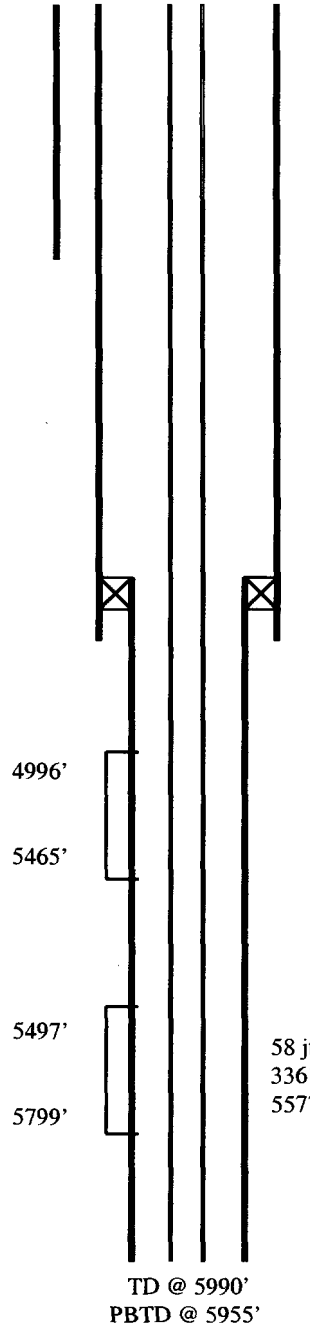
93 jts 7", 20#, J-55, LT&C csg. Landed @ 3520'.
Float insert @ 3480'

TOL @ 3361'

178 jts 2-3/8", 4.7#, J-55, EUE, 8rd tbg
landed @ 5784' as follows: exp check, 1
jt tbg, 1.81" SN, 177 jts tbg.

58 jts 4-1/2", 10.5#, K-55 ST&C csg. Landed @
3361' - 5990'. "L" collar @ 5965', markert jt @
5577'

Top	Depth
CliffHouse	5229'
Menefee	5306'
Point Lookout	5496'
Mancos	5820'



STIMULATION

CliffHouse/Menefee: 4996' - 5465'
(42, 0.36" holes) Frac with 9540#
14/30 Lite Prop 125 followed by
3100# 20/40 brown sand.

Point Lookout: 5497' - 5799' (45,
0.36" holes) Frac with 9420# 14/30
Lite Prop 125 followed by 3040#
20/40 brown sand.

Hole Size	Casing	Cement	Volume	Top of CMT
12-1/4"	9-5/8", 36#	150 sx	212 cu ft.	surface
8-3/4"	7", 20#	550 sx	1125 cu ft.	surface
6-1/4"	4-1/2", 10.5#	165 sx	292 cu ft.	3361'

