

District I  
PO Box 1980, Hobbs NM 88241-1980  
District II  
PO Drawer KK, Artesia, NM 87211-0719  
District III  
1000 Rio Brazos Rd., Aztec, NM 87410  
District IV  
PO Box 2088, Santa Fe, NM 87504-2088

State of New Mexico  
Energy, Minerals & Natural Resources Department  
**OIL CONSERVATION DIVISION**  
PO Box 2088  
Santa Fe, NM 87504-2088

Form C-102  
Revised February 21, 1994  
Instructions on back  
Submit to Appropriate District Office  
State Lease - 4 Copies  
Fee Lease - 3 Copies

☐ AMENDED REPORT

**WELL LOCATION AND ACREAGE DEDICATION PLAT**

1 API Number <b>30-045-33159</b>		2 Pool Code <b>71629</b>		3 Pool Name <b>Brown Fruitland Coal</b>		
4 Property Code <b>19641</b>		5 Property Name <b>NEBU</b>			6 Well Number <b># 471A</b>	
7 OGRID No. <b>6137</b>		8 Operator Name <b>Devon Energy Production Company, L.P.</b>			9 Elevation <b>6472</b>	

**10 Surface Location**

UL or Lot No.	Section	Township	Range	Lot Idn	Feet from the	North/South line	Feet from the	East/West line	County
<b>O</b>	<b>25</b>	<b>31 N</b>	<b>8 W</b>		<b>1150</b>	<b>SOUTH</b>	<b>1840</b>	<b>EAST</b>	<b>SAN JUAN</b>

**11 Bottom Hole Location If Different From Surface**

7 UL or lot no.	Section	Township	Range	Lot Idn	Feet from the	North/South line	Feet from the	East/West line	County
12 Dedicated Acres <b>1320</b>		13 Joint or Infill		14 Consolidation Code		15 Order No.			

NO ALLOWABLE WILL BE ASSIGNED TO THIS COMPLETION UNTIL ALL INTERESTS HAVE BEEN CONSOLIDATED  
OR A NON-STANDARD UNIT HAS BEEN APPROVED BY THE DIVISION

	<b>16</b>	<b>5232 (R)</b>
	<b>25</b>	
	<b>5176 (R)</b>	<b>5222 (R)</b>

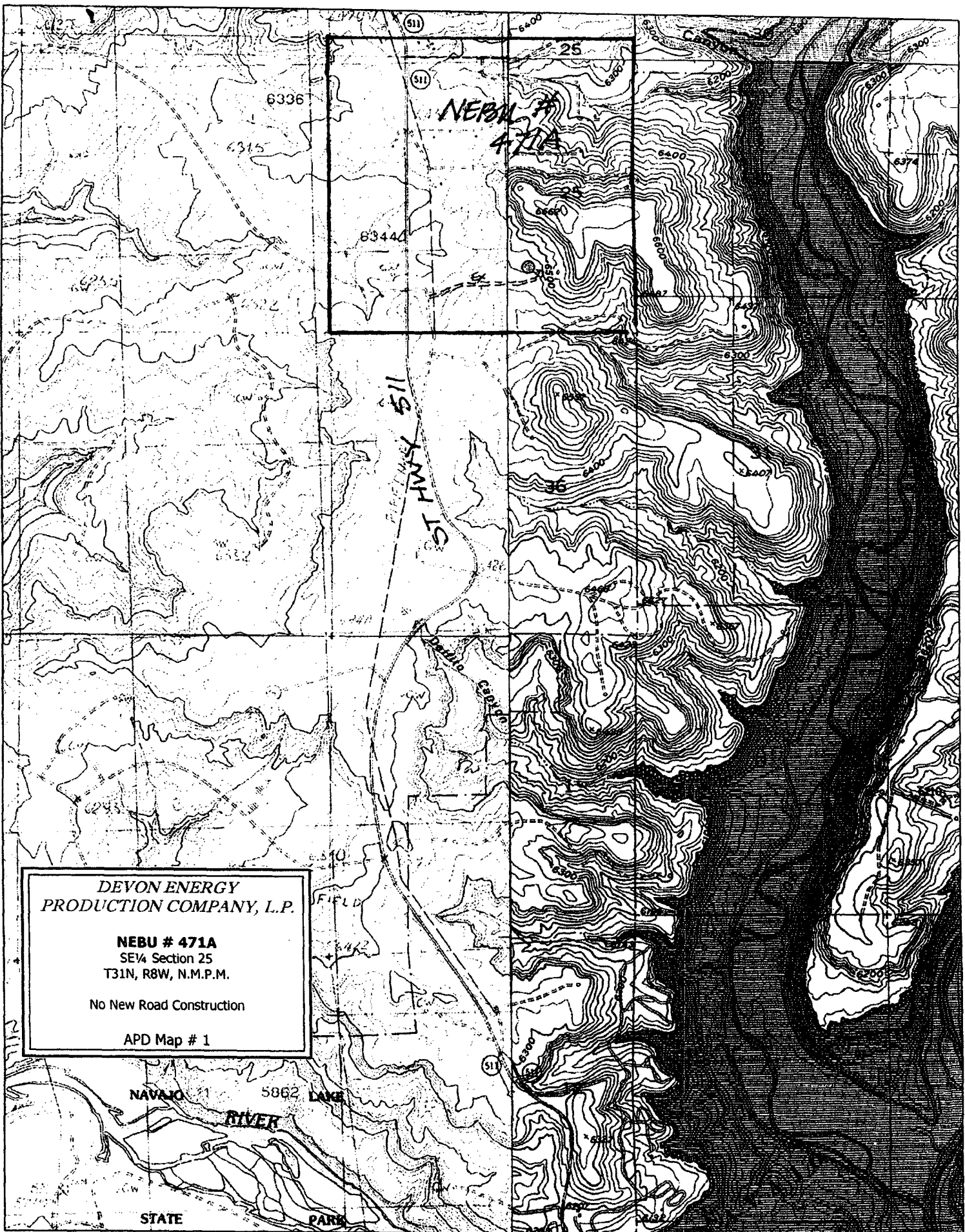
**17 OPERATOR CERTIFICATION**  
I hereby certify that the information contained herein is true and complete to the best of my knowledge and belief.

Signature: *M.S. K...*  
Printed Name: **Melisa Zimmerman**  
Title: **Senior Operations Tech.**  
Date: **10-26-04**

**18 SURVEYOR CERTIFICATION**  
I hereby certify that the well location shown on this plat was plotted from field notes of actual surveys made by me or under my supervision, and that the same is true and correct to the best of my belief.

Date of Survey: **September 3, 2004**  
Signature and Seal of Professional Surveyor: *GARY D. VANN*  
Certificate Number: **7016**

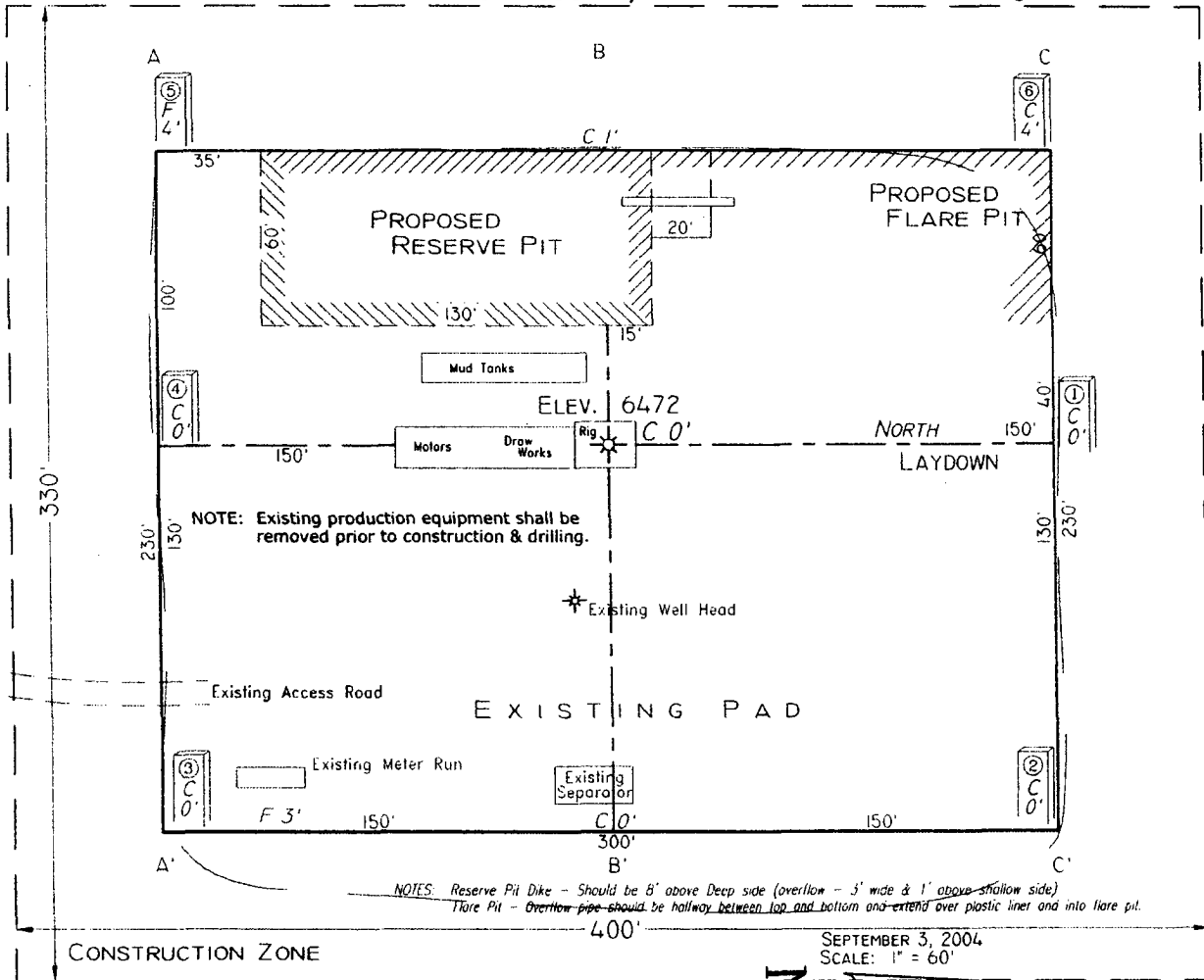
(R) - BLM Record



**PAD LAYOUT PLAN & PROFILE**  
**DEVON ENERGY PRODUCTION COMPANY, L.P.**

Nebu # 471A  
 1150' F/SL 1840' F/EL  
 SEC. 25, T31N, R8W, N.M.P.M.  
 SAN JUAN COUNTY, NEW MEXICO

Lat: 36°51'53"  
 Long: 107°37'28"



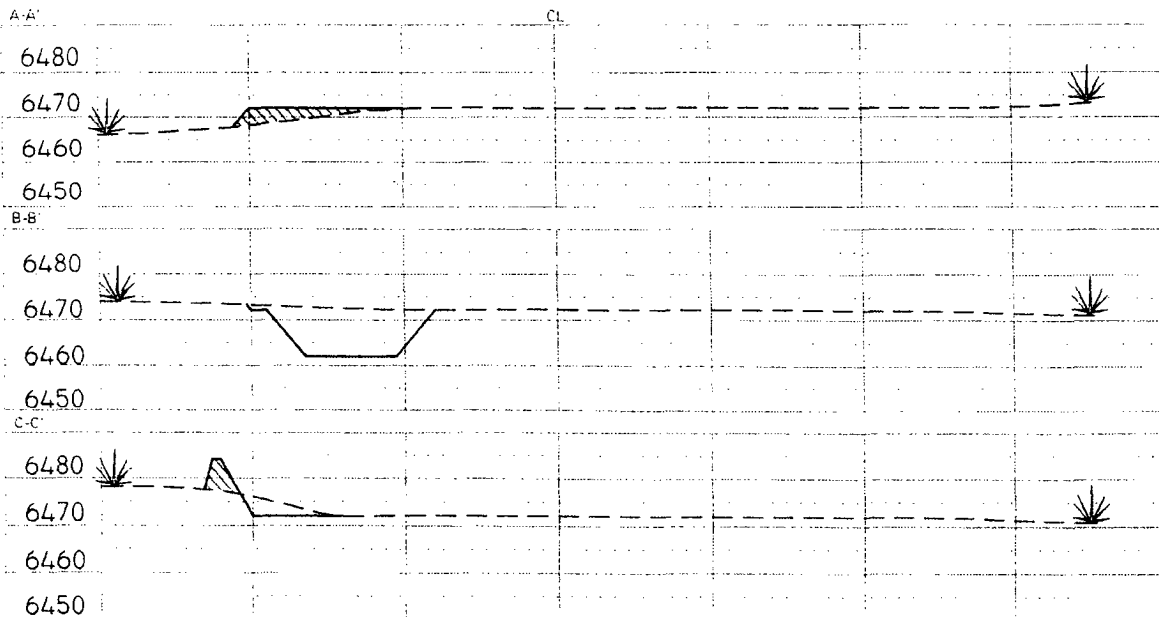
NOTES: Reserve Pit Dike - Should be 6' above Deep side (overflow - 3' wide & 1' above shallow side)  
 Flare Pit - Overflow pipe should be halfway between top and bottom and extend over plastic liner and into flare pit.

SEPTEMBER 3, 2004  
 SCALE: 1" = 60'

CONSTRUCTION ZONE

Area of Construction Zone - 330'x400' or 3.03 acres, more or less.

SCALE: 1"=60'-HORIZ.  
 1"=40'-VERT.



NOTE: Contractor should call One-Call for location of any marked or unmarked buried pipelines or cables on well pad and/or access road at least two (2) working days prior to construction.

Cuts and fills shown are approximate - final finished elevation is to be adjusted so earthwork will balance. Corner stakes are approximate and do not include additional areas needed for sideslopes and drainages. Final Pad Dimensions are to be verified by Contractor.

VANN SURVEYS  
 P. O. Box 1306  
 Farmington, NM

**Cement Point:**

