



# **Cornell D 001E**

Dakota

30-045-24086

T-29N, R-12-W, Sec. 12  
San Juan County, New Mexico

## **History**

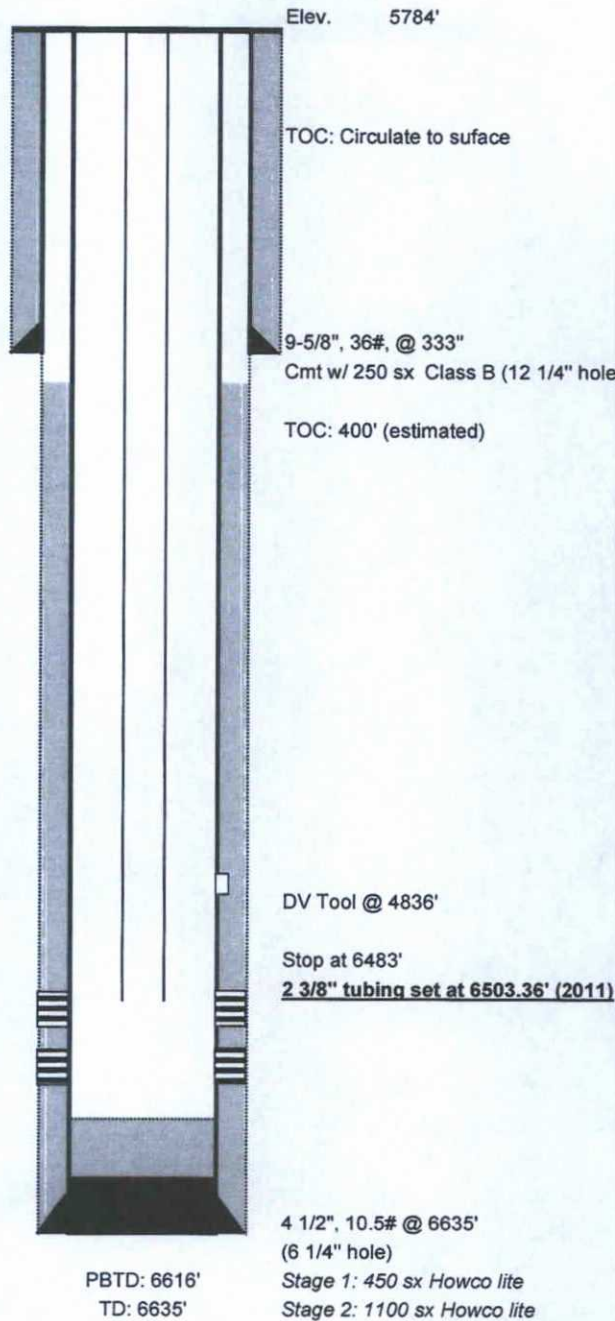
5/22/80: Spud date  
6/18/80: Completion Date  
4/19/05: Wireline retrieved 2 plungers, reset stop at 6354'. Tagged fill at 6603'  
4/26/07: Wireline retrieved plunger. Had no tight spots.  
4/26/06: Plunger removed. Hole in tubing.  
5/11/09: Produced casing.  
7/8/11: Replaced tubing. Set plunger stop at 6483'.

## **Dakota Perforations**

6390-6402  
6470-6512  
6524-6530  
6564-6466  
Frac'd w/ 80000 gals 30# XL gel, 80000#  
20/40 sand & 30000# 10/20 sand in 2 stages.

## **Formation Tops**

Cliffhouse	3520
Menefee	3450
Point Lookout	4250
Gallup	5540
Graneros Sand	6340
Dakota	6468



AA (5/2/11)