

API  
30-045-08131

OIL CONS. DIV DIST. 3

DEC 18 2015

**GALLEGOS CANYON UNIT 107 - DK**

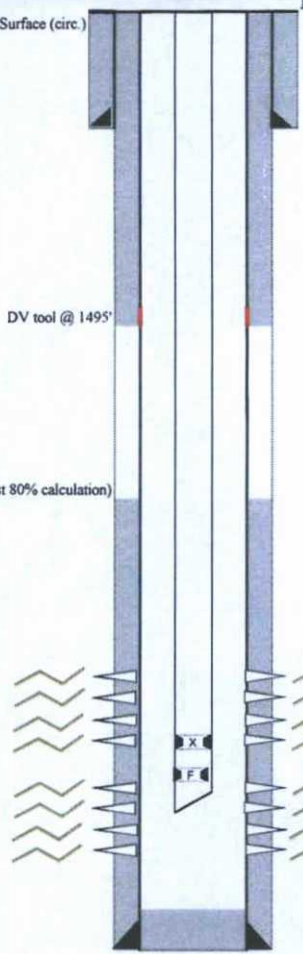
Reservoir / Permanent

Equipment / Temporary

TOC: Surface (circ.)

**Surface Casing Data**

DRL: 12-1/4" @ 358'  
CSG: 8-5/8" 24# @ 358'  
CMT: 280 sx class B; Circ to surface  
PT: 500#



**Dakota Completion**

PERF: w/ 8 spf @ 5937-40', 5946-52'  
FRAC: w/ 40,000 gals wtr and 40,000# snd  
RE-PERF: w/ 2 spf @ 5937-52'  
RE-FRAC: w/ 31,000 gals wtr, 62,000 snd  
PERF: w/ 3 spf @ 5856-62', 5874-84'  
FRAC: w/ 16,044 gals wtr, 27,000# snd

**Production Casing Data**

DRL: 7-7/8" @ 6044'  
CSG: 4-1/2" 10.5# @ 6044', DV tool @ 1495'  
CMT: 1st stage 275 sx Gel, follow by 100 sx Neat  
2nd stage w/ 500 sx Gel  
PT: 3000# @ 15 min, OK

**Well History**

8/25/61 - spudded well  
9/3/61 - TD well @ 6044'  
9/11/61 - Perf DK w/ 6 spf @ 5937-40', 5946-52'  
Frac DK w/ 40,000 gals wtr + 1% calcium Chloride and 7# WG4 per 1000 gals and 40,000# snd  
6/5/68 - Re-Perf DK w/ 2spf @ 5937-52'  
Re-Frac DK @ 5937-40' & 5946-52' w/ 31,000 gals wtr, 10,000# 20/40 snd, 50,000# 10/20 snd, 2000# 8/12 beads snd  
Perf GRNR w/ 3 spf @ 5856-62', 5874-84'  
Frac GRNR w/ 16,044 gals wtr, 20,000# 10/20 snd, 5000# 20/40 snd, 2000# 8/12 beads  
12/5/02 - Landed tbg @ 5932'

**Current Wellbore**

WELL	GCU 107	V.05
COUNTY	SAN JUAN	
STATE	NEW MEXICO	Lat: 36.71684
FIELD		Long: 108.14524
API No.	300450813100	
RKB ELEVATION	5,437.0	
GL ELEVATION	5,425.0	
RKB-GL	12.0	
Location	SEC 019	T 029N R 012W (D)
Location	820' FNL 990' FWL	

**Formation Tops**

Pictured Cliff	1280'
Lewis	1470'
Chacara	2310'
Cliffhouse	2881'
Menefee	3014'
Point Lookout	3750'
Mancos	4078'
Gallup	4994'
Greenhorn	5749'
Graneros	5818'
Two Wells	5850'
Cubero	5927'

**Log Detail**

9/3/61 - SP/ILD @ 356-6040'  
9/3/61 - GR/DT @ 1000-6034'

**Tubing Detail**

2-3/8" Mule Shoe (2)  
2-3/8" F-Nipple 1.78" (1)  
2-3/8" Pup jt 4.7# J55 (4)  
2-3/8" X-Nipple 1.87" (1)  
190 jis 2-3/8" 4.7# J55 eue (5912)  
Landed @ 5932'