

District I  
1625 N. French Dr., Hobbs, NM 88240  
District II  
1301 W. Grand Avenue, Artesia, NM 88210  
District III  
1000 Rio Brazos Road, Aztec, NM 87410  
District IV  
1220 S. St. Francis Dr., Santa Fe, NM 87505

State of New Mexico  
Energy Minerals and Natural Resources  
Oil Conservation Division  
1220 South St. Francis Dr.  
Santa Fe, NM 87505

OIL CONS. DIV DIST. 3

Form C-141  
Revised August 8, 2011

DEC 17 2015  
Submit Copy to appropriate District Office to  
accordance with 19.15.29 NMAC.

**Release Notification and Corrective Action**

**OPERATOR**

Initial Report  Final Report

Name of Company <b>Burlington Resources, a Wholly Owned Subsidiary of ConocoPhillips Company</b>	Contact <b>Lisa Hunter</b>
Address <b>3401 East 30<sup>th</sup> St, Farmington, NM</b>	Telephone No. <b>(505) 258-1607</b>
Facility Name: <b>Day B #4N</b>	Facility Type: <b>Gas Well</b>

Surface Owner <b>Federal</b>	Mineral Owner <b>Federal (SF-078571)</b>	API No. <b>3004534147</b>
------------------------------	--	---------------------------

**LOCATION OF RELEASE**

Unit Letter	Section	Township	Range	Feet from the	North/South Line	Feet from the	East/West Line	County
N	07	27N	08W	895'	South	1935'	West	San Juan

Latitude 36.58495 Longitude -107.72423

**NATURE OF RELEASE**

Type of Release <b>Hydrocarbon</b>	Volume of Release <b>Unknown</b>	Volume Recovered <b>None</b>
Source of Release <b>Below Grade Tank (BGT) Closure</b>	Date and Hour of Occurrence <b>Unknown</b>	Date and Hour of Discovery <b>07-28-14</b>
Was Immediate Notice Given? <input type="checkbox"/> Yes <input type="checkbox"/> No <input checked="" type="checkbox"/> Not Required	If YES, To Whom? N/A	
By Whom? <b>N/A</b>	Date and Hour <b>N/A</b>	
Was a Watercourse Reached? <input type="checkbox"/> Yes <input checked="" type="checkbox"/> No	If YES, Volume Impacting the Watercourse. N/A	

If a Watercourse was Impacted, Describe Fully.\*  
N/A

Describe Cause of Problem and Remedial Action Taken.\*  
**Below-Grade Tank Closure activities with samples taken resulting in constituents exceeded standards outlined by 19.15.17.13 NMAC.**

Describe Area Affected and Cleanup Action Taken.\*  
**NMOCD action levels for releases are specified in NMOCD's Guidelines for Leaks, Spills and Releases and the release was assigned a ranking score of 10. Samples were collected and analytical results are below applicable NMOCD action levels. No further work will be performed. The final report is attached for review.**

I hereby certify that the information given above is true and complete to the best of my knowledge and understand that pursuant to NMOCD rules and regulations all operators are required to report and/or file certain release notifications and perform corrective actions for releases which may endanger public health or the environment. The acceptance of a C-141 report by the NMOCD marked as "Final Report" does not relieve the operator of liability should their operations have failed to adequately investigate and remediate contamination that pose a threat to ground water, surface water, human health or the environment. In addition, NMOCD acceptance of a C-141 report does not relieve the operator of responsibility for compliance with any other federal, state, or local laws and/or regulations.

Signature: 	<u>OIL CONSERVATION DIVISION</u>	
Printed Name: <b>Lisa Hunter</b>	Approved by Environmental Specialist: 	
Title: <b>Field Environmental Specialist</b>	Approval Date: <b>1/13/2016</b>	Expiration Date:
E-mail Address: <b>Lisa.Hunter@cop.com</b>	Conditions of Approval: <b>-</b>	Attached <input type="checkbox"/>
Date: <b>December 14, 2015</b> Phone: <b>(505) 258-1607</b>		

\* Attach Additional Sheets If Necessary

NOF1601333937





Animas Environmental Services, LLC

[www.animasenvironmental.com](http://www.animasenvironmental.com)

624 E. Comanche  
Farmington, NM 87401  
505-564-2281

Durango, Colorado  
970-403-3084

September 26, 2014

Lindsay Dumas  
ConocoPhillips  
San Juan Business Unit  
Office 214-07  
5525 Hwy 64  
Farmington, New Mexico 87401

Via electronic mail to: [SJBUE-Team@ConocoPhillips.com](mailto:SJBUE-Team@ConocoPhillips.com)

**RE: Below Grade Tank Closure Report  
Day B #4N  
San Juan County, New Mexico**

Dear Ms. Dumas:

Animas Environmental Services, LLC (AES) is pleased to provide the final report associated with the below grade tank (BGT) closure at ConocoPhillips (CoP) Day B #4N, located in San Juan County, New Mexico. Tank removal was completed by CoP contractors while AES was on site.

---

## 1.0 Site Information

### 1.1 Location

Site Name – Day B #4N

Legal Description – SE¼ SW¼, Section 7, T27N, R8W, San Juan County, New Mexico

Well Latitude/Longitude – N36.58476 and W107.72436, respectively

BGT Latitude/Longitude – N36.58495 and W107.72423, respectively

Land Jurisdiction – Bureau of Land Management

Figure 1. Topographic Site Location Map

Figure 2. Aerial Site Map, August 2014

### 1.2 NMOCD Ranking

In accordance with the New Mexico Oil Conservation Division (NMOCD) *Guidelines for Remediation of Leaks, Spills, and Releases* (August 1993), the location was given a ranking score of 10 based on the following factors:

- **Depth to Groundwater:** A cathodic protection report for the Day B #4, located 850 feet northwest and 31 feet higher than the location, reported no groundwater within 300 feet below ground surface (bgs). (0 points)
- **Wellhead Protection Area:** The tank location is not within a wellhead protection area. (0 points)
- **Distance to Surface Water Body:** The wash in Fresno Canyon is 700 feet northeast of the location. (10 points)

### 1.3 BGT Closure Assessment

AES was initially contacted by Ralph Sloane, CoP representative, on July 28, 2014, and on August 5, 2014, Corwin Lameman and David Reese of AES mobilized to the location. AES personnel collected six soil samples from below the BGT liner. Four samples were collected from the perimeter of the BGT footprint, one sample was collected from the center of the BGT footprint, and one sample was composited from the four perimeter samples and one center sample.

---

## 2.0 Soil Sampling

On August 5, 2014, AES personnel collected five soil samples (S-1 through S-5) and one 5-point composite (SC-1) from below the BGT. Soil samples were collected from approximately 0.5 feet below the former BGT for field screening of volatile organic compounds (VOCs) and analysis of total petroleum hydrocarbons (TPH). Soil sample SC-1 was field screened for VOCs, TPH, and chloride, and was submitted for confirmation laboratory analysis. Soil sample locations are included on Figure 2.

### 2.1 Field Sampling

#### 2.1.1 Volatile Organic Compounds

A portion of each sample was utilized for field screening of VOC vapors with a photo-ionization detector (PID) organic vapor meter (OVM). Before beginning field screening, the PID-OVM was first calibrated with 100 parts per million (ppm) isobutylene gas.

#### 2.1.2 Total Petroleum Hydrocarbons

Soil samples were also analyzed in the field for TPH per U.S. Environmental Protection Agency (USEPA) Method 418.1 using a Buck Scientific Model HC-404 Total Hydrocarbon Analyzer Infrared Spectrometer (Buck). A 3-point calibration was completed prior to conducting soil analyses. Field analytical protocol followed AES's *Standard Operating Procedure: Field Analysis Total Petroleum Hydrocarbons per EPA Method 418.1*.



### 2.1.3 Chlorides

Soil sample SC-1 was field screened for chlorides using Chloride Drop Count Titration with silver nitrate. Sampling and analysis methods followed procedures provided by Hach Company.

## 2.2 Laboratory Analyses

The composite soil sample SC-1 collected for laboratory analysis was placed into a new, clean, laboratory-supplied container, which was then labeled, placed on ice, and logged onto a sample chain of custody record. The sample was maintained on ice until delivery to the analytical laboratory, Hall Environmental Analysis Laboratory (Hall), in Albuquerque, New Mexico. Soil sample SC-1 was laboratory analyzed for:

- Benzene, toluene, ethylbenzene, and xylene (BTEX) per USEPA Method 8260B;
- TPH for gasoline range organics (GRO) and diesel range organics (DRO) per USEPA Method 8015D; and
- Chloride per USEPA Method 300.0.

## 2.3 Field and Laboratory Analytical Results

Field screening readings for VOCs via OVM ranged from 2.0 ppm in S-4 up to 50.5 ppm in S-3. Field TPH concentrations ranged from 40.6 mg/kg in S-4 up to 2,040 mg/kg in S-3. The field chloride concentration in SC-1 was 100 mg/kg. Field sampling results are summarized in Table 1 and presented on Figure 2. The AES Field Sampling Report is attached.

Table 1. Soil Field Sampling VOCs, TPH, and Chloride Results  
 Day B #4N BGT Closure, August 2014

<i>Sample ID</i>	<i>Date Sampled</i>	<i>Depth below BGT (ft)</i>	<i>VOCs OVM Reading (ppm)</i>	<i>TPH 418.1 (mg/kg)</i>	<i>Field Chlorides (mg/kg)</i>
<i>NMOCD Action Level* (NMAC 19.15.17.13E)</i>			<i>NE/100</i>	<i>100/1,000</i>	<i>250/NE</i>
S-1	8/5/14	0.5	6.1	272	NA
S-2	8/5/14	0.5	2.9	276	NA
S-3	8/5/14	0.5	50.5	2,040	NA
S-4	8/5/14	0.5	2.0	40.6	NA
S-5	8/5/14	0.5	9.8	142	NA
SC-1	8/5/14	0.5	15.4	533	100

NA - not analyzed

NE - not established



\*Action level determined by the NMOCD ranking score per *NMOCD Guidelines for Remediation of Leaks, Spills, and Releases* (August 1993) and *NMAC 19.15.17.13E*.

Laboratory analytical results reported benzene and total BTEX concentrations in SC-1 as less than 0.028 mg/kg and 0.14 mg/kg, respectively. TPH concentrations as GRO and DRO were reported at less than 2.8 mg/kg and at 140 mg/kg, respectively. The laboratory chloride concentration was reported at 260 mg/kg. Laboratory analytical results are summarized in Table 2 and included on Figure 2. The laboratory analytical report is attached.

Table 2. Soil Laboratory Analytical Results  
 Day B #4N BGT Closure, August 2014

<i>Sample ID</i>	<i>Date Sampled</i>	<i>Depth (ft)</i>	<i>Benzene (mg/kg)</i>	<i>Total BTEX (mg/kg)</i>	<i>TPH-GRO (mg/kg)</i>	<i>TPH-DRO (mg/kg)</i>	<i>Chlorides (mg/kg)</i>
<i>NMOCD Action Level* (NMAC 19.15.17.13E)</i>			<i>0.2/10</i>	<i>50</i>	<i>100/1,000</i>		<i>250/NE</i>
SC-1	8/5/14	0.5	<0.028	<0.14	<2.8	140	260

NE - not established

\*Action level determined by the NMOCD ranking score per *NMOCD Guidelines for Remediation of Leaks, Spills, and Releases* (August 1993) and *NMAC 19.15.17.13E*.

### 3.0 Conclusions and Recommendations

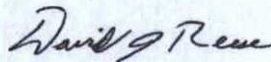
NMOCD action levels for BGT closures are specified in New Mexico Administrative Code (NMAC) 19.15.17.13E. Field TPH concentrations were above the NMOCD action level of 100 mg/kg in all samples except S-4, with the highest concentration reported in S-3 with 2,040 mg/kg. Benzene and total BTEX concentrations in SC-1 were below the NMOCD action levels of 0.2 mg/kg and 50 mg/kg, respectively. However, laboratory TPH concentrations exceeded the NMOCD action level of 100 mg/kg, and chloride concentrations in SC-1 were above the NMOCD action level of 250 mg/kg. Based on field and laboratory analytical results for benzene, total BTEX, TPH, and chlorides, a release was confirmed at Day B #4N.

Action levels for releases are determined by the NMOCD ranking score per *NMOCD Guidelines for Remediation of Leaks, Spills, and Releases* (August 1993), and the site was assigned a rank of 10. Benzene and total BTEX concentrations were reported below the NMOCD action levels of 10 mg/kg and 50 mg/kg, respectively, in SC-1. Laboratory TPH concentrations as GRO/DRO were also below the NMOCD action level of 1,000 mg/kg. NMOCD release action levels have not been established for chloride.

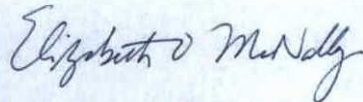
Based on final field and laboratory analytical results of the release at the Day B #4N, benzene, total BTEX, VOC, and TPH concentrations were below applicable NMOCD action levels for a site ranking of 10. No further work is recommended.

If you have any questions about this report or site conditions, please do not hesitate to contact Emilee Skyles at (505) 564-2281.

Sincerely,



David J. Reese  
Environmental Scientist



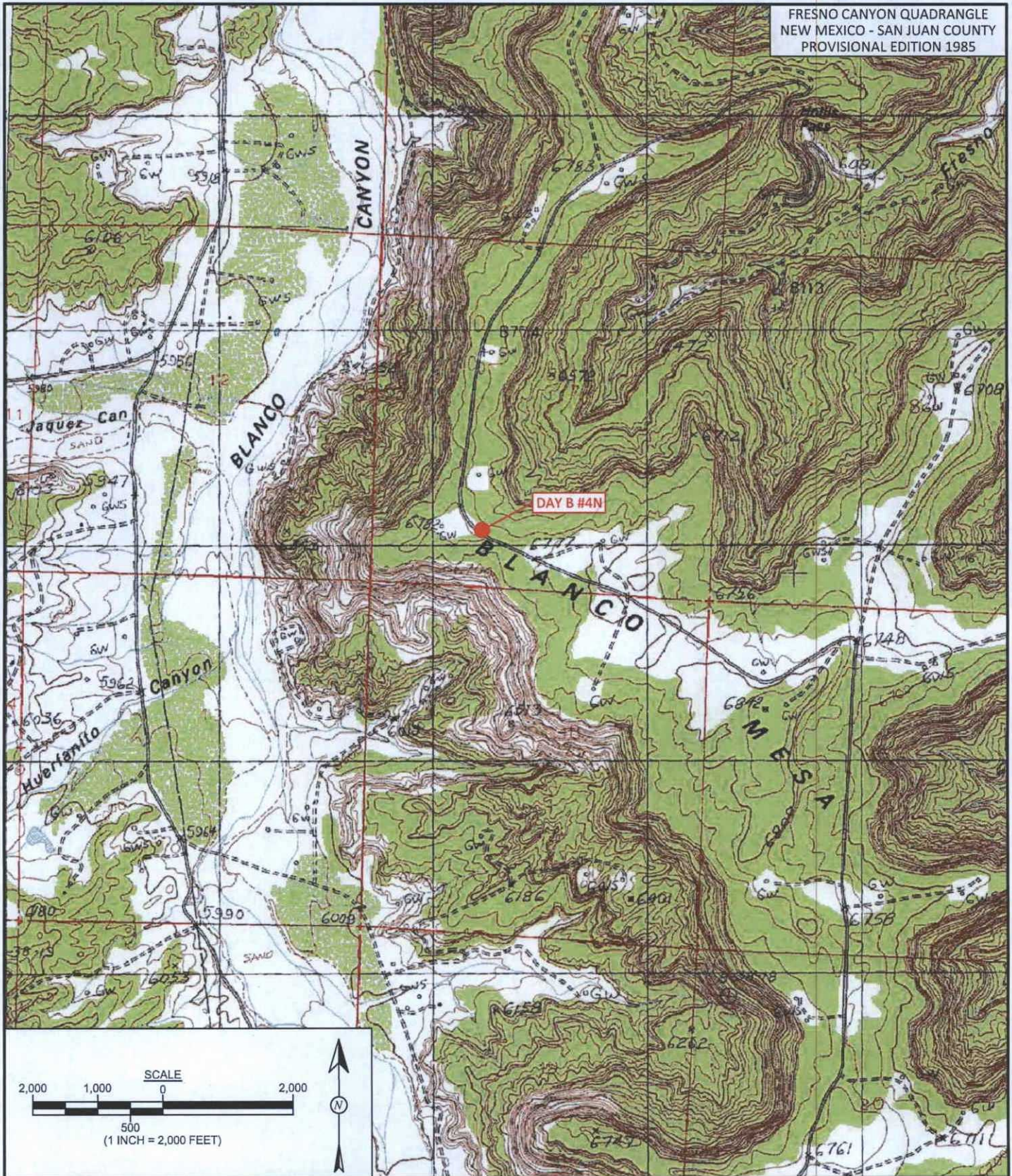
Elizabeth McNally, P.E.

Attachments:

- Figure 1. Topographic Site Location Map
- Figure 2. Aerial Site Map, August 2014
- AES Field Sampling Report 080514
- Hall Analytical Report 1408232

C:\Users\emcnally\Dropbox (Animas Environmental)\0000 Animas Server Dropbox EM\2014  
Projects\ConocoPhillips\Day B #4N\Day B #4N BGT Closure Report 092614.docx

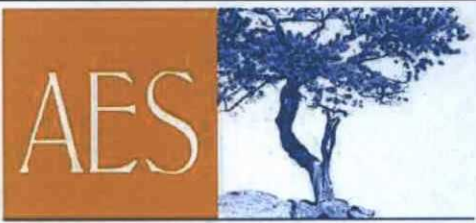




**FIGURE 1**

**TOPOGRAPHIC SITE LOCATION MAP**


ConocoPhillips  
 DAY B #4N  
 SE¼ SW¼, SECTION 7, T27N, R8W  
 SAN JUAN COUNTY, NEW MEXICO  
 N36.58476, W107.72436



Animas Environmental Services, LLC

<b>DRAWN BY:</b> S. Glasses	<b>DATE DRAWN:</b> August 6, 2014
<b>REVISIONS BY:</b> C. Lameman	<b>DATE REVISED:</b> August 6, 2014
<b>CHECKED BY:</b> E. Skyles	<b>DATE CHECKED:</b> August 6, 2014
<b>APPROVED BY:</b> E. McNally	<b>DATE APPROVED:</b> August 6, 2014



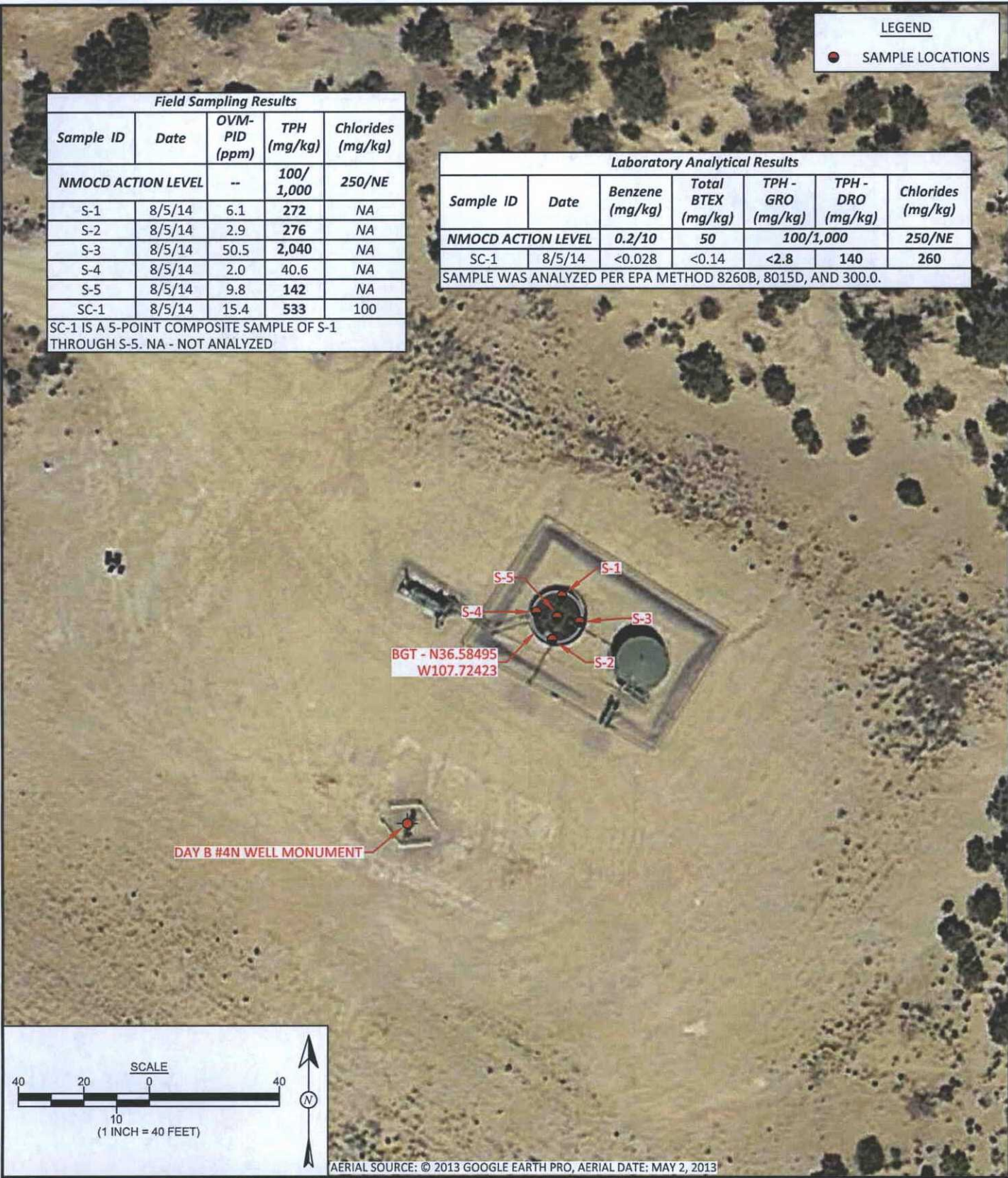
**LEGEND**  
 **SAMPLE LOCATIONS**

Field Sampling Results				
Sample ID	Date	OVM-PID (ppm)	TPH (mg/kg)	Chlorides (mg/kg)
<b>NMOC ACTION LEVEL</b>		--	<b>100/1,000</b>	<b>250/NE</b>
S-1	8/5/14	6.1	272	NA
S-2	8/5/14	2.9	276	NA
S-3	8/5/14	50.5	2,040	NA
S-4	8/5/14	2.0	40.6	NA
S-5	8/5/14	9.8	142	NA
SC-1	8/5/14	15.4	533	100

SC-1 IS A 5-POINT COMPOSITE SAMPLE OF S-1 THROUGH S-5. NA - NOT ANALYZED

Laboratory Analytical Results						
Sample ID	Date	Benzene (mg/kg)	Total BTEX (mg/kg)	TPH - GRO (mg/kg)	TPH - DRO (mg/kg)	Chlorides (mg/kg)
<b>NMOC ACTION LEVEL</b>		<b>0.2/10</b>	<b>50</b>	<b>100/1,000</b>		<b>250/NE</b>
SC-1	8/5/14	<0.028	<0.14	<2.8	140	260

SAMPLE WAS ANALYZED PER EPA METHOD 8260B, 8015D, AND 300.0.



AERIAL SOURCE: © 2013 GOOGLE EARTH PRO, AERIAL DATE: MAY 2, 2013



<b>DRAWN BY:</b> S. Glasses	<b>DATE DRAWN:</b> August 6, 2014
<b>REVISIONS BY:</b> C. Lameman	<b>DATE REVISED:</b> August 6, 2014
<b>CHECKED BY:</b> E. Skyles	<b>DATE CHECKED:</b> August 6, 2014
<b>APPROVED BY:</b> E. McNally	<b>DATE APPROVED:</b> August 6, 2014

**FIGURE 2**  
**AERIAL SITE MAP**  
**BELOW GRADE TANK CLOSURE**  
**AUGUST 2014**  
 ConocoPhillips  
 DAY B #4N  
 SE¼ SW¼, SECTION 7, T27N, R8W  
 SAN JUAN COUNTY, NEW MEXICO  
 N36.58476, W107.72436



# AES Field Sampling Report



Animas Environmental Services, LLC

www.animasenvironmental.com

624 E. Comanche  
Farmington, NM 87401  
505-564-2281

Durango, Colorado  
970-403-3084

Client: ConocoPhillips

Project Location: Day B #4N

Date: 8/5/2014

Matrix: Soil

Sample ID	Collection Date	Time of Sample Collection	Sample Location	OVM (ppm)	Field Chloride (mg/kg)	Field TPH Analysis Time	Field TPH* (mg/kg)	TPH PQL (mg/kg)	DF	TPH Analysts Initials
S-1	8/5/2014	11:15	North	6.1	NA	11:57	272	20.0	1	CL
S-2	8/5/2014	11:17	South	2.9	NA	12:00	276	20.0	1	DR
S-3	8/5/2014	11:19	East	50.5	NA	12:03	2,041	20.0	1	CL
S-4	8/5/2014	11:22	West	2.0	NA	12:07	40.6	20.0	1	DR
S-5	8/5/2014	11:25	Center	9.8	NA	12:09	142	20.0	1	CL
SC-1	8/5/2014	11:28	Composite	15.4	100	12:39	533	20.0	1	CL

DF Dilution Factor  
 NA Not Analyzed  
 ND Not Detected at the Reporting Limit  
 PQL Practical Quantitation Limit

\*Field TPH concentrations recorded may be below PQL.

Field Chloride - Quantab Chloride Titrators or Drop Count  
 Titration with Silver Nitrate  
 Total Petroleum Hydrocarbons - USEPA 418.1

Analyst:

*Carli*  
*David R. Reese*





Hall Environmental Analysis Laboratory  
4901 Hawkins NE  
Albuquerque, NM 87109  
TEL: 505-345-3975 FAX: 505-345-4107  
Website: [www.hallenvironmental.com](http://www.hallenvironmental.com)

August 08, 2014

Debbie Watson

Animas Environmental  
624 East Comanche  
Farmington, NM 87401  
TEL: (505) 486-4071  
FAX

RE: CoP Day B #4N

OrderNo.: 1408232

Dear Debbie Watson:

Hall Environmental Analysis Laboratory received 1 sample(s) on 8/6/2014 for the analyses presented in the following report.

These were analyzed according to EPA procedures or equivalent. To access our accredited tests please go to [www.hallenvironmental.com](http://www.hallenvironmental.com) or the state specific web sites. In order to properly interpret your results it is imperative that you review this report in its entirety. See the sample checklist and/or the Chain of Custody for information regarding the sample receipt temperature and preservation. Data qualifiers or a narrative will be provided if the sample analysis or analytical quality control parameters require a flag. When necessary, data qualifiers are provided on both the sample analysis report and the QC summary report, both sections should be reviewed. All samples are reported, as received, unless otherwise indicated. Lab measurement of analytes considered field parameters that require analysis within 15 minutes of sampling such as pH and residual chlorine are qualified as being analyzed outside of the recommended holding time.

Please don't hesitate to contact HEAL for any additional information or clarifications.

ADHS Cert #AZ0682 -- NMED-DWB Cert #NM9425 -- NMED-Micro Cert #NM0190

Sincerely,

A handwritten signature in black ink, appearing to read "Andy Freeman", is written over a light blue horizontal line.

Andy Freeman  
Laboratory Manager  
4901 Hawkins NE  
Albuquerque, NM 87109







# QC SUMMARY REPORT

Hall Environmental Analysis Laboratory, Inc.

WO#: 1408232

08-Aug-14

Client: Animas Environmental

Project: CoP Day B #4N

Sample ID	<b>MB-14629</b>	SampType:	<b>MBLK</b>	TestCode:	<b>EPA Method 300.0: Anions</b>					
Client ID:	<b>PBS</b>	Batch ID:	<b>14629</b>	RunNo:	<b>20424</b>					
Prep Date:	<b>8/6/2014</b>	Analysis Date:	<b>8/6/2014</b>	SeqNo:	<b>594128</b>	Units:	<b>mg/Kg</b>			
Analyte	Result	PQL	SPK value	SPK Ref Val	%REC	LowLimit	HighLimit	%RPD	RPDLimit	Qual
Chloride	ND	1.5								

Sample ID	<b>LCS-14629</b>	SampType:	<b>LCS</b>	TestCode:	<b>EPA Method 300.0: Anions</b>					
Client ID:	<b>LCSS</b>	Batch ID:	<b>14629</b>	RunNo:	<b>20424</b>					
Prep Date:	<b>8/6/2014</b>	Analysis Date:	<b>8/6/2014</b>	SeqNo:	<b>594129</b>	Units:	<b>mg/Kg</b>			
Analyte	Result	PQL	SPK value	SPK Ref Val	%REC	LowLimit	HighLimit	%RPD	RPDLimit	Qual
Chloride	14	1.5	15.00	0	94.0	90	110			

## Qualifiers:

- \* Value exceeds Maximum Contaminant Level.
- E Value above quantitation range
- J Analyte detected below quantitation limits
- O RSD is greater than RSDlimit
- R RPD outside accepted recovery limits
- S Spike Recovery outside accepted recovery limits
- B Analyte detected in the associated Method Blank
- H Holding times for preparation or analysis exceeded
- ND Not Detected at the Reporting Limit
- P Sample pH greater than 2.
- RL Reporting Detection Limit



# QC SUMMARY REPORT

## Hall Environmental Analysis Laboratory, Inc.

WO#: 1408232

08-Aug-14

**Client:** Animas Environmental

**Project:** CoP Day B #4N

Sample ID <b>MB-14626</b>	SampType: <b>MBLK</b>	TestCode: <b>EPA Method 8015D: Diesel Range Organics</b>								
Client ID: <b>PBS</b>	Batch ID: <b>14626</b>	RunNo: <b>20396</b>								
Prep Date: <b>8/6/2014</b>	Analysis Date: <b>8/6/2014</b>	SeqNo: <b>593213</b>			Units: <b>mg/Kg</b>					
Analyte	Result	PQL	SPK value	SPK Ref Val	%REC	LowLimit	HighLimit	%RPD	RPDLimit	Qual
Diesel Range Organics (DRO)	ND	10								
Surr: DNOP	9.0		10.00		90.3	57.9	140			

Sample ID <b>LCS-14626</b>	SampType: <b>LCS</b>	TestCode: <b>EPA Method 8015D: Diesel Range Organics</b>								
Client ID: <b>LCSS</b>	Batch ID: <b>14626</b>	RunNo: <b>20396</b>								
Prep Date: <b>8/6/2014</b>	Analysis Date: <b>8/6/2014</b>	SeqNo: <b>593214</b>			Units: <b>mg/Kg</b>					
Analyte	Result	PQL	SPK value	SPK Ref Val	%REC	LowLimit	HighLimit	%RPD	RPDLimit	Qual
Diesel Range Organics (DRO)	45	10	50.00	0	90.5	68.6	130			
Surr: DNOP	4.5		5.000		89.9	57.9	140			

**Qualifiers:**

- \* Value exceeds Maximum Contaminant Level.
- E Value above quantitation range
- J Analyte detected below quantitation limits
- O RSD is greater than RSDlimit
- R RPD outside accepted recovery limits
- S Spike Recovery outside accepted recovery limits
- B Analyte detected in the associated Method Blank
- H Holding times for preparation or analysis exceeded
- ND Not Detected at the Reporting Limit
- P Sample pH greater than 2.
- RL Reporting Detection Limit



# QC SUMMARY REPORT

Hall Environmental Analysis Laboratory, Inc.

WO#: 1408232

08-Aug-14

Client: Animas Environmental

Project: CoP Day B #4N

Sample ID	<b>MB-14615MK</b>	SampType:	<b>MBLK</b>	TestCode:	<b>EPA Method 8260B: Volatiles Short List</b>					
Client ID:	<b>PBS</b>	Batch ID:	<b>R20394</b>	RunNo:	<b>20394</b>					
Prep Date:		Analysis Date:	<b>8/6/2014</b>	SeqNo:	<b>593945</b>	Units:	<b>mg/Kg</b>			

Analyte	Result	PQL	SPK value	SPK Ref Val	%REC	LowLimit	HighLimit	%RPD	RPDLimit	Qual
Benzene	ND	0.050								
Toluene	ND	0.050								
Ethylbenzene	ND	0.050								
Xylenes, Total	ND	0.10								
mp-Xylenes	ND	0.050								
o-Xylene	ND	0.050								
Surr: 1,2-Dichloroethane-d4	0.45		0.5000		90.5	70	130			
Surr: 4-Bromofluorobenzene	0.44		0.5000		88.7	70	130			
Surr: Dibromofluoromethane	0.46		0.5000		91.3	70	130			
Surr: Toluene-d8	0.45		0.5000		90.6	70	130			

Sample ID	<b>LCS-14615MK</b>	SampType:	<b>LCS</b>	TestCode:	<b>EPA Method 8260B: Volatiles Short List</b>					
Client ID:	<b>LCSS</b>	Batch ID:	<b>R20394</b>	RunNo:	<b>20394</b>					
Prep Date:		Analysis Date:	<b>8/6/2014</b>	SeqNo:	<b>593946</b>	Units:	<b>mg/Kg</b>			

Analyte	Result	PQL	SPK value	SPK Ref Val	%REC	LowLimit	HighLimit	%RPD	RPDLimit	Qual
Benzene	0.97	0.050	1.000	0	97.1	70	130			
Toluene	0.99	0.050	1.000	0	99.3	60.1	120			
Surr: 1,2-Dichloroethane-d4	0.44		0.5000		87.9	70	130			
Surr: 4-Bromofluorobenzene	0.41		0.5000		82.9	70	130			
Surr: Dibromofluoromethane	0.45		0.5000		90.0	70	130			
Surr: Toluene-d8	0.46		0.5000		91.5	70	130			

### Qualifiers:

- \* Value exceeds Maximum Contaminant Level.
- E Value above quantitation range
- J Analyte detected below quantitation limits
- O RSD is greater than RSDlimit
- R RPD outside accepted recovery limits
- S Spike Recovery outside accepted recovery limits
- B Analyte detected in the associated Method Blank
- H Holding times for preparation or analysis exceeded
- ND Not Detected at the Reporting Limit
- P Sample pH greater than 2.
- RL Reporting Detection Limit



# QC SUMMARY REPORT

## Hall Environmental Analysis Laboratory, Inc.

WO#: 1408232  
08-Aug-14

**Client:** Animas Environmental  
**Project:** CoP Day B #4N

Sample ID <b>MB-14615MK</b>	SampType: <b>MBLK</b>		TestCode: <b>EPA Method 8015D Mod: Gasoline Range</b>							
Client ID: <b>PBS</b>	Batch ID: <b>R20394</b>		RunNo: <b>20394</b>							
Prep Date:	Analysis Date: <b>8/6/2014</b>		SeqNo: <b>593947</b>		Units: <b>mg/Kg</b>					
Analyte	Result	PQL	SPK value	SPK Ref Val	%REC	LowLimit	HighLimit	%RPD	RPDLimit	Qual
Gasoline Range Organics (GRO)	ND	5.0								
Surr: BFB	480		500.0		95.1	61.2	137			

Sample ID <b>LCS-14615MK</b>	SampType: <b>LCS</b>		TestCode: <b>EPA Method 8015D Mod: Gasoline Range</b>							
Client ID: <b>LCSS</b>	Batch ID: <b>R20394</b>		RunNo: <b>20394</b>							
Prep Date:	Analysis Date: <b>8/6/2014</b>		SeqNo: <b>593948</b>		Units: <b>mg/Kg</b>					
Analyte	Result	PQL	SPK value	SPK Ref Val	%REC	LowLimit	HighLimit	%RPD	RPDLimit	Qual
Gasoline Range Organics (GRO)	30	5.0	25.00	0	118	80	120			
Surr: BFB	560		500.0		113	61.2	137			

**Qualifiers:**

- \* Value exceeds Maximum Contaminant Level.
- E Value above quantitation range
- J Analyte detected below quantitation limits
- O RSD is greater than RSDlimit
- R RPD outside accepted recovery limits
- S Spike Recovery outside accepted recovery limits
- B Analyte detected in the associated Method Blank
- H Holding times for preparation or analysis exceeded
- ND Not Detected at the Reporting Limit
- P Sample pH greater than 2.
- RL Reporting Detection Limit



**Sample Log-In Check List**

Client Name: Animas Environmental

Work Order Number: 1408232

RcptNo: 1

Received by/date: AT 08/06/14

Logged By: Anne Thorne 8/6/2014 7:35:00 AM *Anne Thorne*

Completed By: Anne Thorne 8/6/2014 *Anne Thorne*

Reviewed By: MG 08/06/14

**Chain of Custody**

- 1. Custody seals intact on sample bottles? Yes  No  Not Present
- 2. Is Chain of Custody complete? Yes  No  Not Present
- 3. How was the sample delivered? Courier

**Log In**

- 4. Was an attempt made to cool the samples? Yes  No  NA
- 5. Were all samples received at a temperature of >0° C to 6.0°C Yes  No  NA
- 6. Sample(s) in proper container(s)? Yes  No
- 7. Sufficient sample volume for indicated test(s)? Yes  No
- 8. Are samples (except VOA and ONG) properly preserved? Yes  No
- 9. Was preservative added to bottles? Yes  No  NA
- 10. VOA vials have zero headspace? Yes  No  No VOA Vials
- 11. Were any sample containers received broken? Yes  No
- 12. Does paperwork match bottle labels? Yes  No   
(Note discrepancies on chain of custody)
- 13. Are matrices correctly identified on Chain of Custody? Yes  No
- 14. Is it clear what analyses were requested? Yes  No
- 15. Were all holding times able to be met? Yes  No   
(If no, notify customer for authorization.)

# of preserved bottles checked for pH: \_\_\_\_\_  
 (<2 or >12 unless noted)  
 Adjusted? \_\_\_\_\_  
 Checked by: \_\_\_\_\_

**Special Handling (if applicable)**

- 16. Was client notified of all discrepancies with this order? Yes  No  NA

Person Notified: \_\_\_\_\_ Date: \_\_\_\_\_  
 By Whom: \_\_\_\_\_ Via:  eMail  Phone  Fax  In Person  
 Regarding: \_\_\_\_\_  
 Client Instructions: \_\_\_\_\_

17. Additional remarks: per dew collection date is 08/05/14  
AT 08/06/14

**18. Cooler Information**

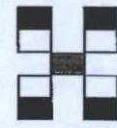
Cooler No.	Temp °C	Condition	Seal Intact	Seal No.	Seal Date	Signed By
1	3.6	Good	Yes			



# Chain-of-Custody Record

Client: Animas Environmental  
Services  
 Mailing Address: 404 E. Comanche  
Farmington NM 87401  
 Phone #: 505-564-2281  
 email or Fax#:

Turnaround Time:  
 Standard  Rush Same Day  
 Project Name: COP Day B #4N  
 Project #:  
 Project Manager: D. Watzon



## HALL ENVIRONMENTAL ANALYSIS LABORATORY

www.hallenvironmental.com

4901 Hawkins NE - Albuquerque, NM 87109

Tel. 505-345-3975 Fax 505-345-4107

### Analysis Request

QA/QC Package:  
 Standard  Level 4 (Full Validation)  
 Accreditation  
 NELAP  Other \_\_\_\_\_  
 EDD (Type) \_\_\_\_\_

Sampler: CL/DL  
 On Ice:  Yes  No  
 Sample Temperature: 36

Date	Time	Matrix	Sample Request ID	Container Type and #	Preservative Type	HEAL No	BTEX + (8021)	BTEX + MTBE + TPH (Gas only)	TPH 8015B (GRO / DRO / <del>TPH</del> )	TPH (Method 418.1)	EDB (Method 504.1)	PAH's (8310 or 8270 SIMS)	RCRA 8 Metals	Anions (F, Cl, NO <sub>3</sub> , NO <sub>2</sub> , PO <sub>4</sub> , SO <sub>4</sub> )	8081 Pesticides / 8082 PCB's	8260B (VOA)	8270 (Semi-VOA)	Chlorides (8000)	Air Bubbles (Y or N)
<u>8/5/14</u>	<u>1128</u>	<u>Soil</u>	<u>SC-1</u>	<u>Meat 4oz jar</u>	<u>Meat Ice</u>	<u>1408232</u>	<u>X</u>	<u>X</u>										<u>X</u>	

Date: 8/5/14 Time: 1759 Relinquished by: [Signature]  
 Date: 8/5/14 Time: 1910 Relinquished by: [Signature]

Received by: [Signature] Date: 8/5/14 Time: 1759  
 Received by: [Signature] Date: 08/06/14 Time: 1735

Remarks: Bill to Conoco Phillips  
WD: 10356716  
Supervisor: Mark McKnight  
User: K. Garcia  
Area: 22  
Per Dr. Project n. COP Day #4  
rvms 9

If necessary, samples submitted to Hall Environmental may be subcontracted to other accredited laboratories. This serves as notice of this possibility. Any sub-contracted data will be clearly notated on the analytical report.



Property ID: 30045341470000  
 Property Type: WELL  
 Well Name: DAY B 4N

Lease Num: SF-078571  
 Well RCUID: 2309788 [Get Detail](#)  
 Func'l Loc: HZ-F1-SJS-FA00006-02309788

Foreman: 6 Route: 612  
 State: 30 County: 045

Operator: BR  
 Spud Date: 3/27/2007  
 Loc Color:

- Dual Property
- Comingled
- CDP / POD
- 2 Gram HP / Hr

Comments:

Restrictions: YR

Township: 027N  
 Range: 008W  
 Section: 07  
 Unit Letter: N  
 Footage: 895 FSL & 1935 FWL  
 Elevation: 6758  
 Latitude: 36.584772  
 Longitude: -107.723707

Type	Serial #	Adm Tan
OIL	7286132-A	

Type	A/B	Lining	Adm Pit
STEEL	Below	Lined	

Facilities located on MPAD: DAY B 4N [Update MPA](#)

Record Source	Depth	Rcd Date
BLM Groundwater Data		9/17/200
Cathodic AC DB		9/17/200
File Listing in Cathodic Folder		
File Listing in Cathodic Folder		

DK  
MV [Add New Formation](#)

PLUG & ABANDON - 8/5/2014  
 REMEDIAL - 10/22/2013  
 REDELIVERY - 10/21/2011 [Add New Project](#)